

Branch I

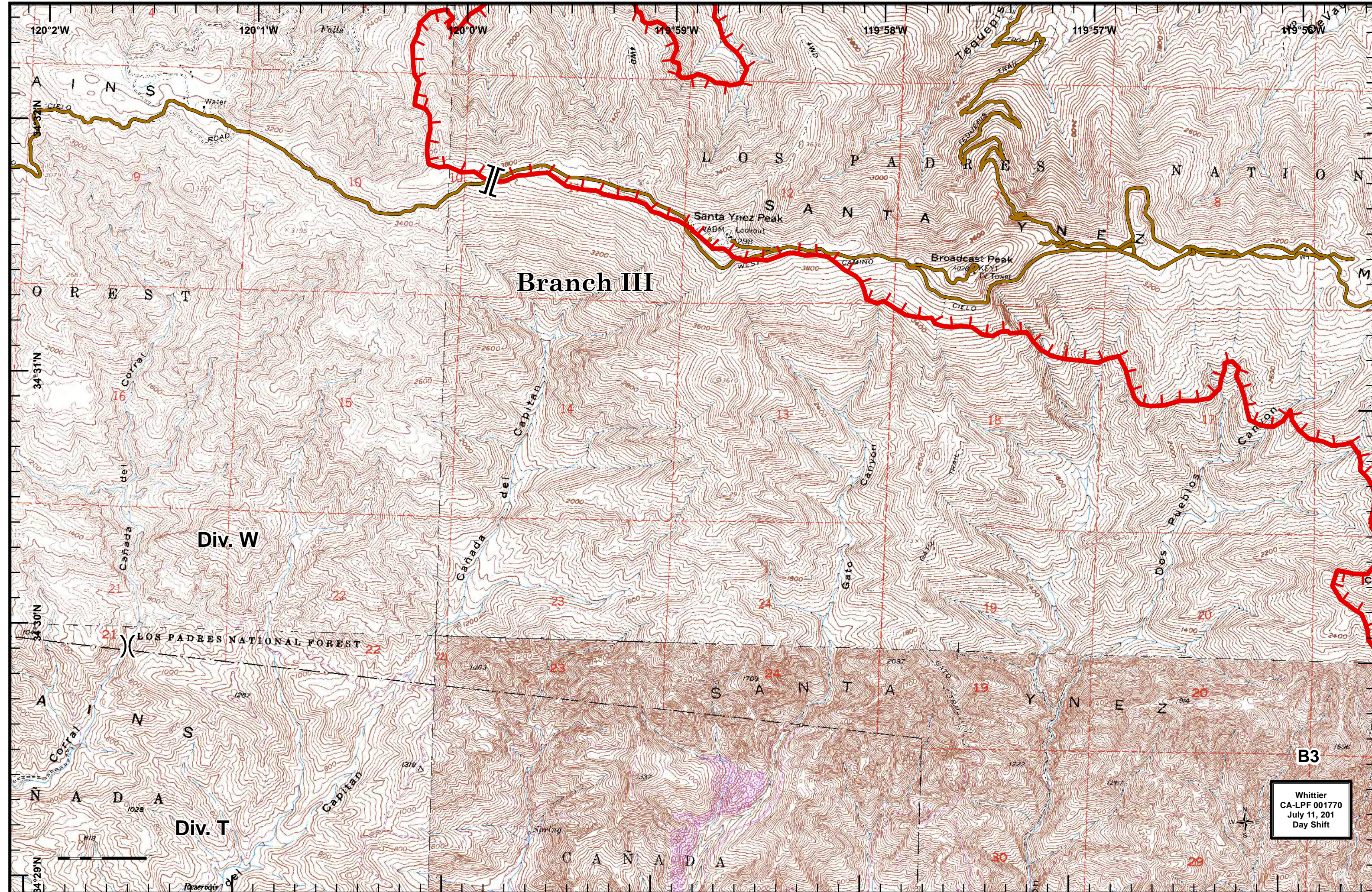
Div. Y

Div. Z

Div. A

Branch III

Whittier
CA-LPF 001770
July 11, 201
Day Shift

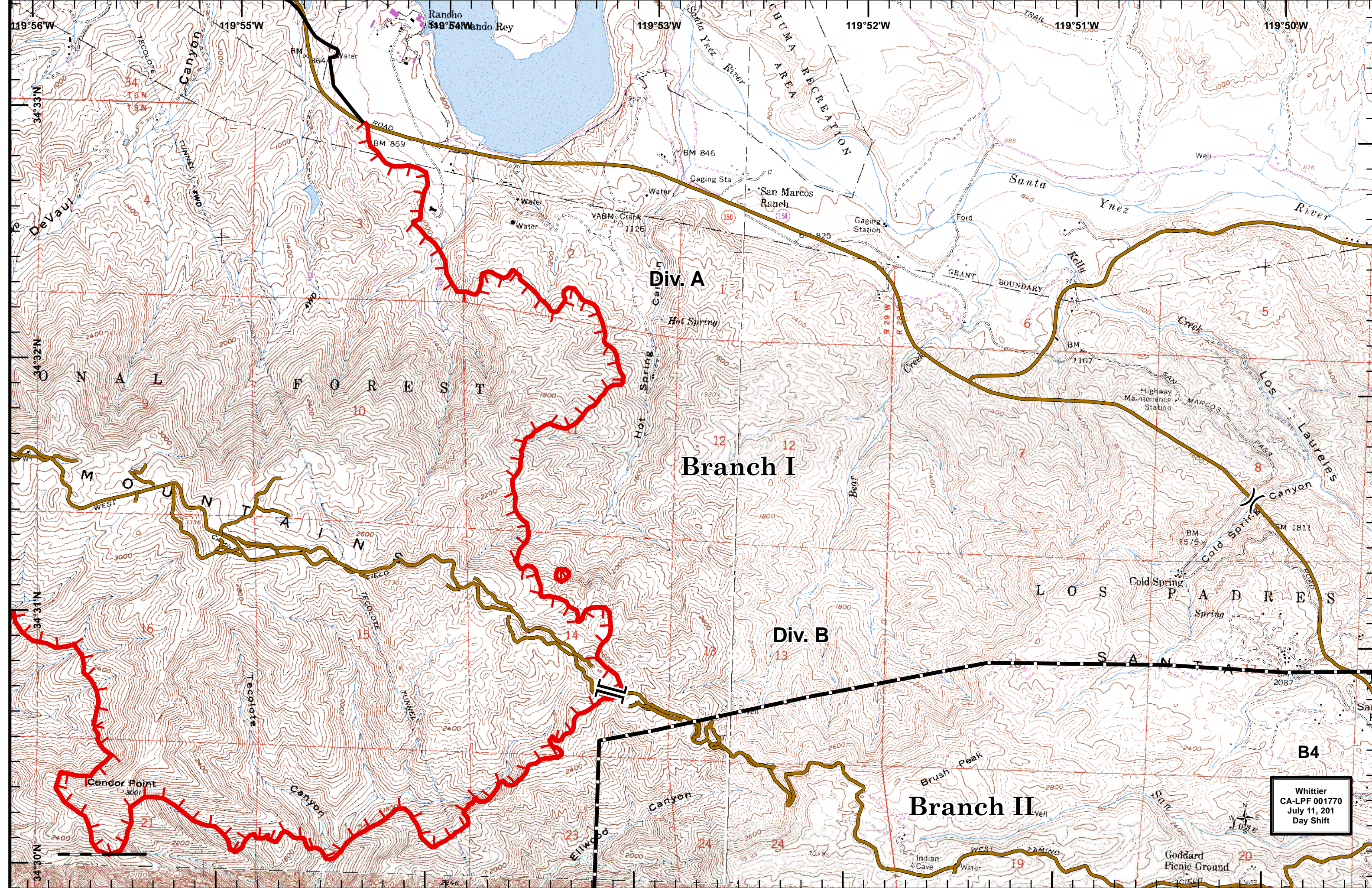


Branch III

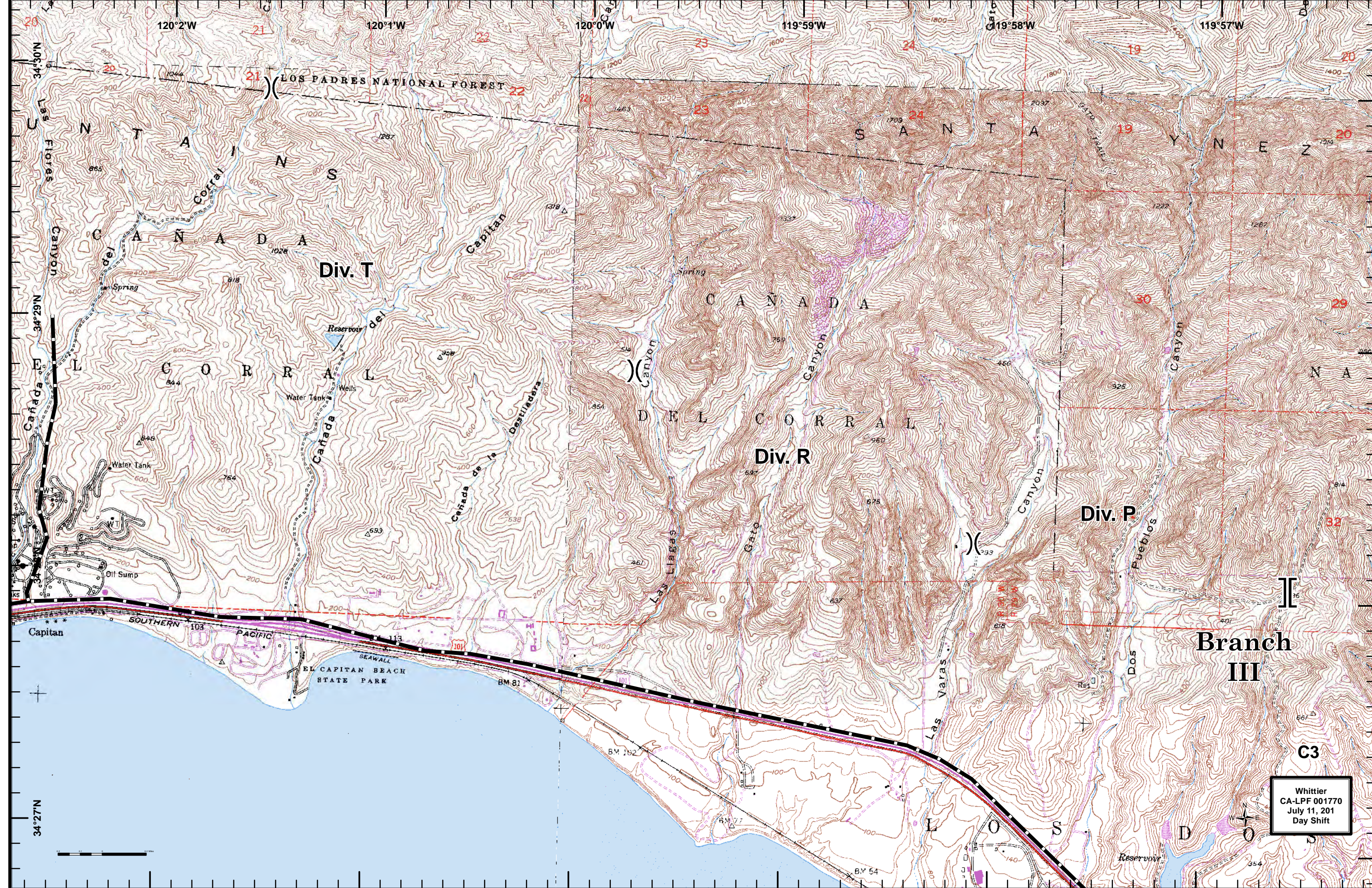
Div. W

Div. T

Whittier
CA-LPF 001770
July 11, 2011
Day Shift



Whittier
CA-LPF 001770
July 11, 2011
Day Shift



120°2'W 120°1'W 120°0'W 119°59'W 119°58'W 119°57'W

LOS PADRES NATIONAL FOREST

Div. T

Div. R

Div. P

Branch III

C3

Cañada del Coronado

DELCORRAL

SANTA YNEZ

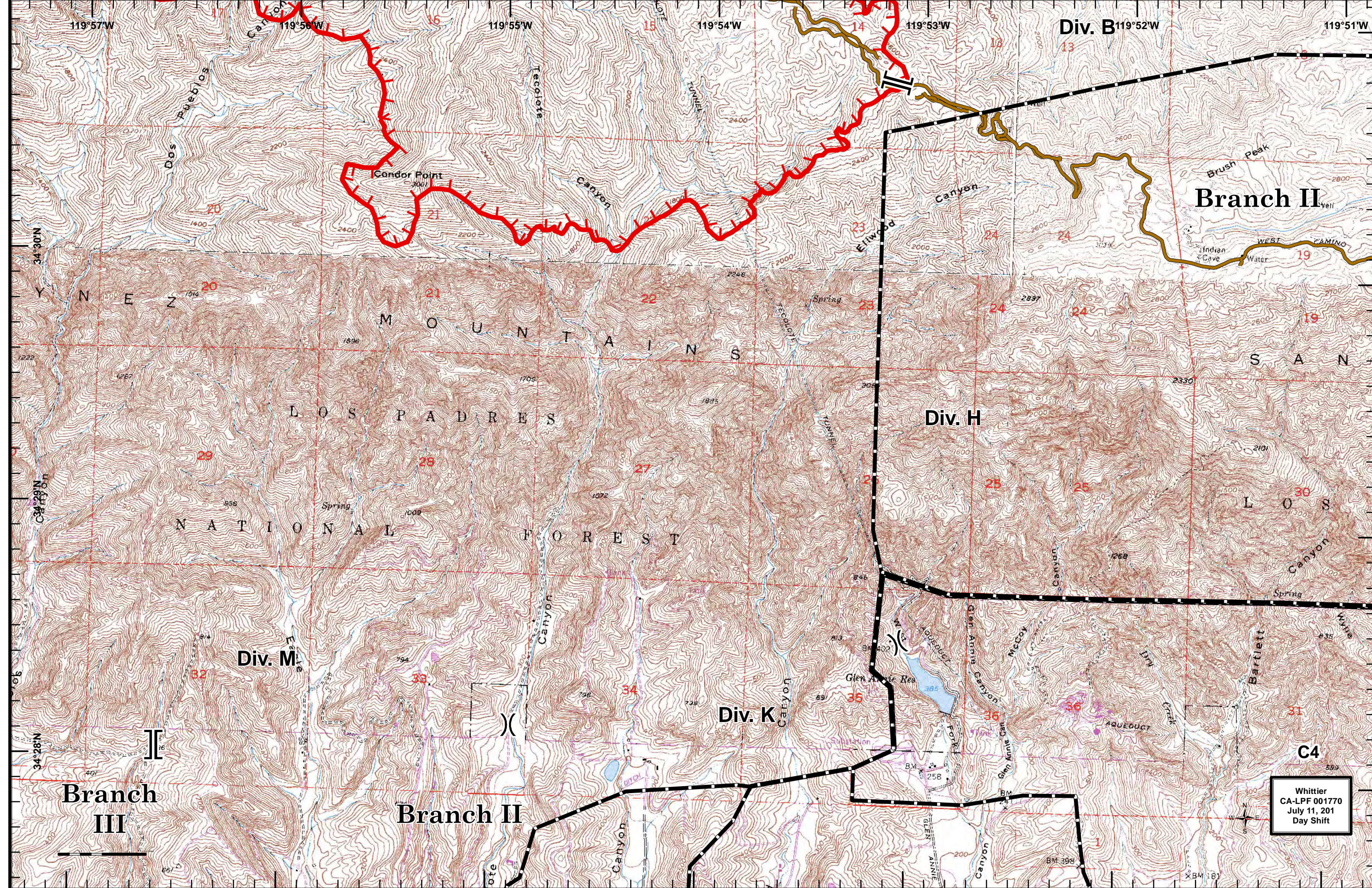
SOUTHERN PACIFIC

EL CAPITAN BEACH STATE PARK

Whittier
CA-LPF 001770
July 11, 2011
Day Shift

34°27'N





Div. B 119°52'W

Branch II

Div. H

Div. M

Div. K

Branch III

Branch II

C4

Whittier
CA-LPF 001770
July 11, 2011
Day Shift

119°57'W

119°56'W

119°55'W

119°54'W

119°53'W

119°51'W

34°30'N

34°29'N

34°28'N

20

21

22

23

24

24

19

29

28

27

25

25

30

32

33

34

35

36

31

13

14

13

19

1

BM 398

BM 181

Los Padres

Lebec

TUNNEL

Brush Peak

Indian Cave

WEST CAMINO

Candor Point

Canyon

Canyon

LOS PADRES

MOUNTAINS

NATIONAL FOREST

WEST CAMINO

WEST CAMINO

Div. H

Div. M

Div. K

Branch III

Branch II

C4

Whittier
CA-LPF 001770
July 11, 2011
Day Shift

119°57'W

119°56'W

119°55'W

119°54'W

119°53'W

119°51'W

34°30'N

34°29'N

34°28'N

20

21

22

23

24

24

19

29

28

27

25

25

30

32

33

34

35

36

31

13

14

13

19

1

BM 398

BM 181

Los Padres

Lebec

TUNNEL

Brush Peak

Indian Cave

WEST CAMINO

Candor Point

Canyon

Canyon

LOS PADRES

MOUNTAINS

NATIONAL FOREST

WEST CAMINO

WEST CAMINO

Div. H

Div. M

Div. K

Branch III

Branch II

C4

Whittier
CA-LPF 001770
July 11, 2011
Day Shift