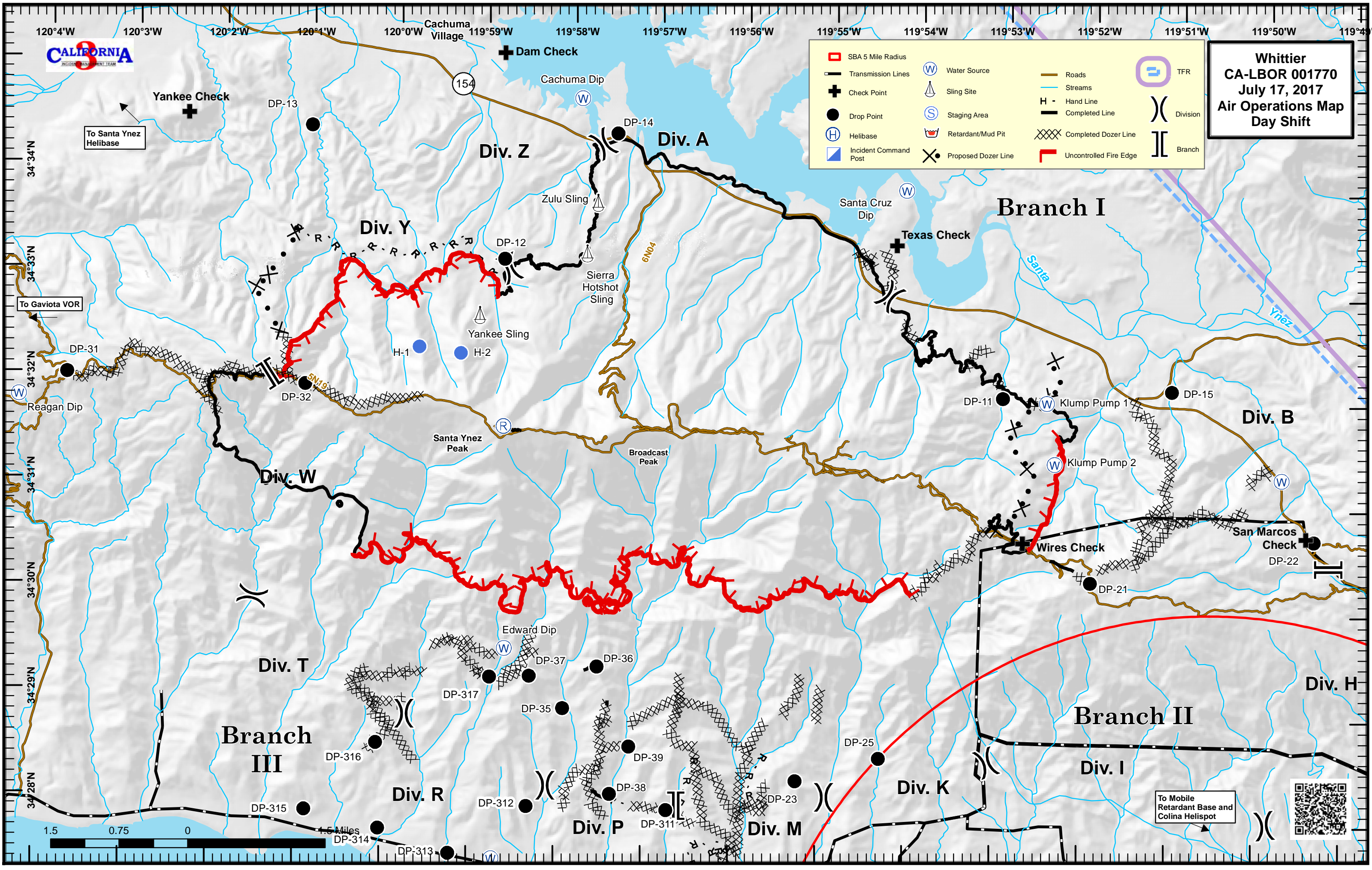




**Whittier**  
**CA-LBOR 001770**  
**July 17, 2017**  
**Air Operations Map**  
**Day Shift**

SBA 5 Mile Radius	Water Source	Roads	TFR
Transmission Lines	Sling Site	Streams	Hand Line
Check Point	Staging Area	Completed Line	Division
Drop Point	Retardant/Mud Pit	Completed Dozer Line	Branch
Helibase	Proposed Dozer Line	Uncontrolled Fire Edge	
Incident Command Post			



To Mobile Retardant Base and Colina Helispot



### WHITTIER PILOT LOCATION INFORMATION

Name	Type	Latitude	Longitude	Elevation	IGE / OGE	Remarks
Cachuma Dip		N34°34.740'	W119°57.900'	770'		CAUTION: WIRES ACROSS FINGER
Santa Cruz Dip		N34°33.950'	W119°54.150'	770'		East end of Cachuma Lake
Edwards Dip		N34°29.493'	W119°58.630'	950'		
Reagan Dip		N34°31.786'	W120°04.282'	2260'		Near Reagan Ranch
154 MRB		N34°27.334'	W119°45.960'	390'		Junction of HWY 154 & 192
Name	Type	Latitude	Longitude	Elevation	IGE / OGE	Remarks
Santa Ynez Helibase		N34°36.406'	W120°04.514'	710'	HIGE	Santa Ynez Airport is OPEN - Outside TFR Tower 125.675
Zulu Sling Site 1		N34°33.752'	W119°57.696'	1240'	HOGE	On dozer line Div Zulu
Sierra HS Sling Site		N34°33.266'	W119°57.802'	1680'	HOGE	On dozer line Div Zulu
Yankee Sling Site 1		N34°32.652'	W119°59.015'	2410'	HOGE	Hilton Canyon Div Yankee in Black
Klump Pump 1		N34°31.960'	W119°52.473'	1750'	HOGE	Lower Bravo
Klump Pump 2		N34°31.384'	W119°52.365'	1915'	HOGE	Mid-slope Bear Creek Drainage
H-1	2	N34°32.338'	W119°59.698'	3225'	HOGE	In Black, DUST ABATEMENT REQUIRED
H-2	2	N34°32.288'	W119°59.218'	3435'	HOGE	In Black, DUST ABATEMENT REQUIRED
Colina Helispot	1	N34°27.041'	W119°45.299'	250'	HIGE	Athletic field @ La Colina Junior High School

### WHITTIER PILOT ROUTE LOCATION INFORMATION

Name	Type	Latitude	Longitude	Elevation	IGE / OGE	Remarks
Dam Check	RW	N34°35.153'	W119°58.804'		N/A	RW traffic enroute to east end of fire Div A/B
Texas Check	RW	N34°33.423'	W119°54.242'		N/A	RW traffic to/from Santa Cruz Dip or MRB
Gaviota VOR	RW	N34°31.877'	W120°05.464'		N/A	RW traffic route from HB to Edwards Dip
Wires Check	RW	N34°30.620'	W119°52.720'		N/A	RW traffic from Div B to/from Hwy 154 MRB
San Marcos Check	RW	N34°30.730'	W119°49.464'		N/A	RW traffic to/from Hwy 154 MRB to Div B
Yankee Check	RW	N34°34.507'	W120°02.418'		N/A	RW traffic troop transport from HB to H1 / H2