

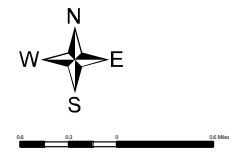
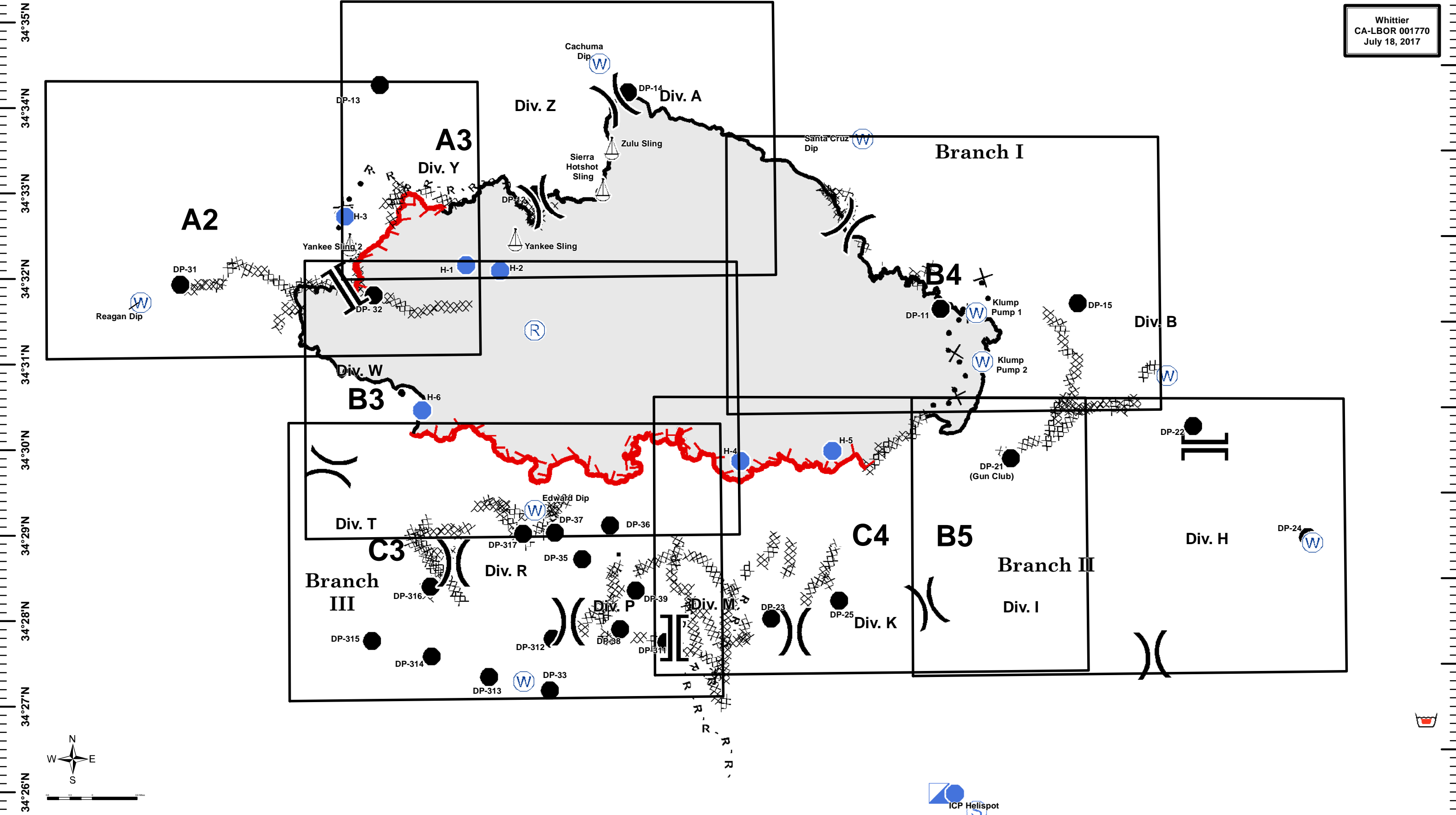
120°6'W 120°5'W 120°4'W 120°3'W 120°2'W 120°1'W 120°0'W 119°59'W 119°58'W 119°57'W 119°56'W 119°55'W 119°54'W 119°53'W 119°52'W 119°51'W 119°50'W 119°49'W 119°48'W




Page Grid Index Map



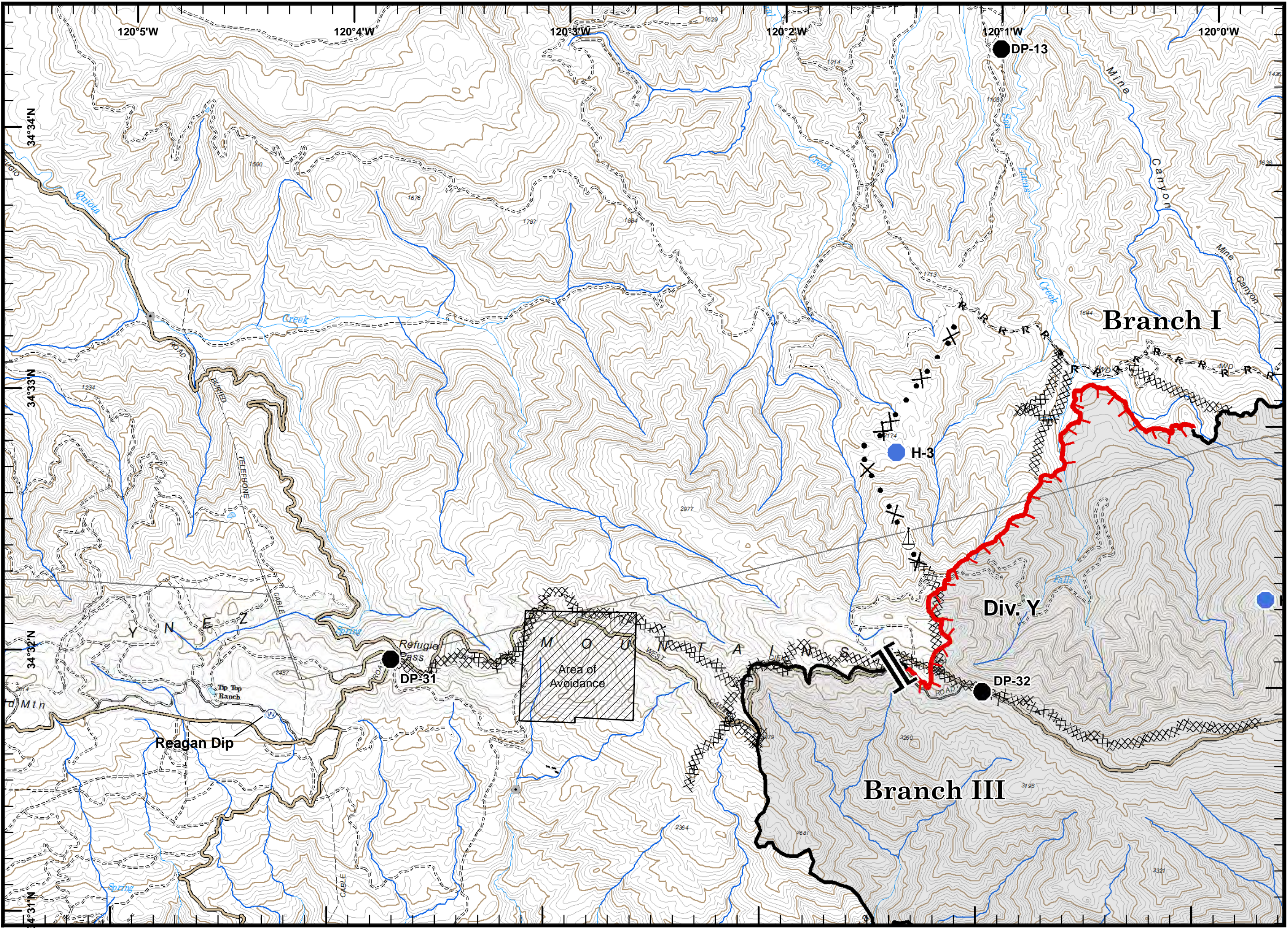
Whittier
CA-LBOR 001770
July 18, 2017






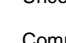
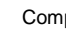
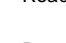

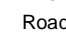



Incident Action
Plan Map

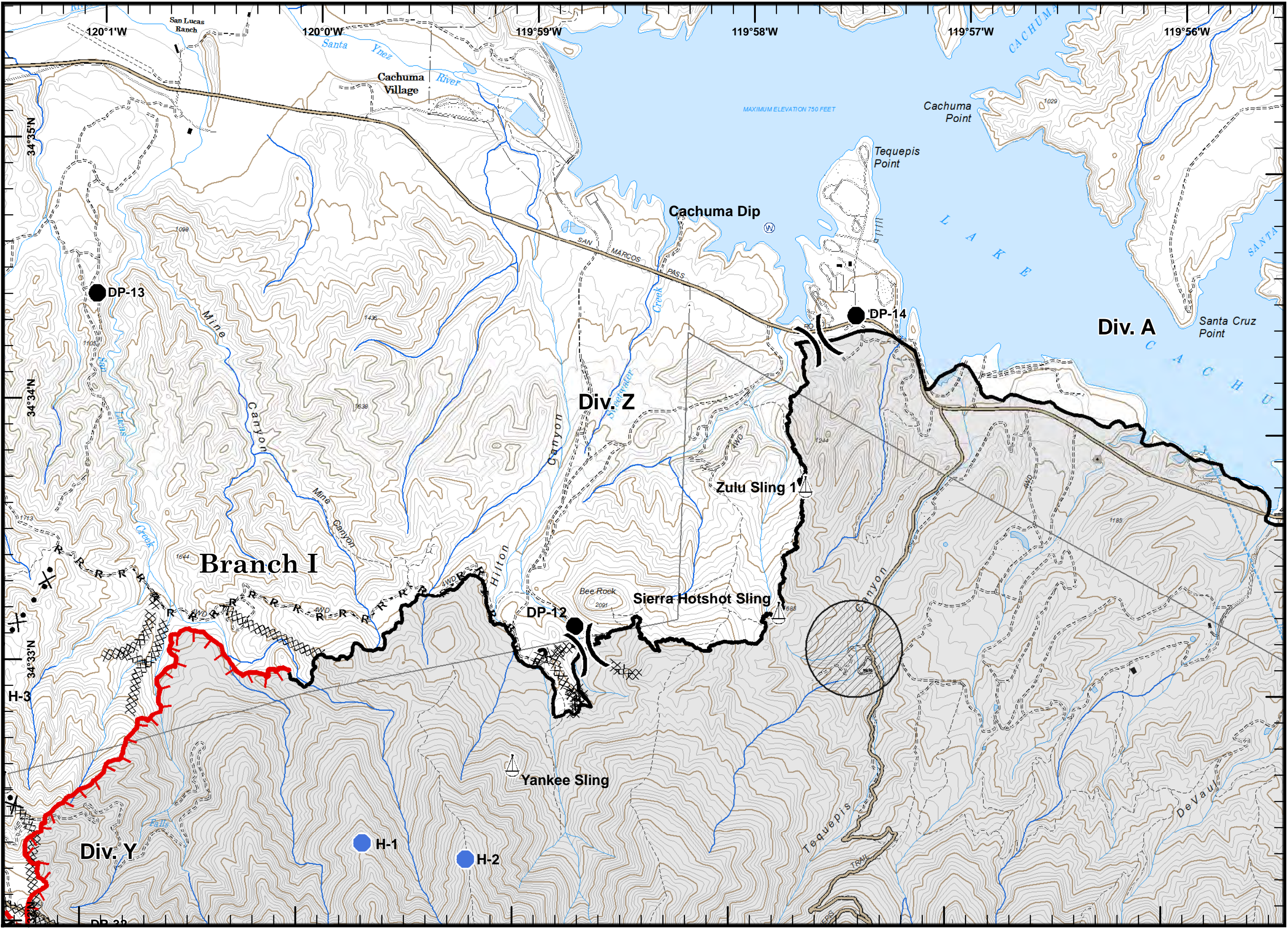


- Branch
- Drop Point
- Helispot
- Sling Site
- Water Source
- Uncontrolled Fire Edge
- Completed Dozer Line
- Completed Line
- R - Road as Completed Line
- Proposed Dozer Line
- Avoidance Area
- Roads



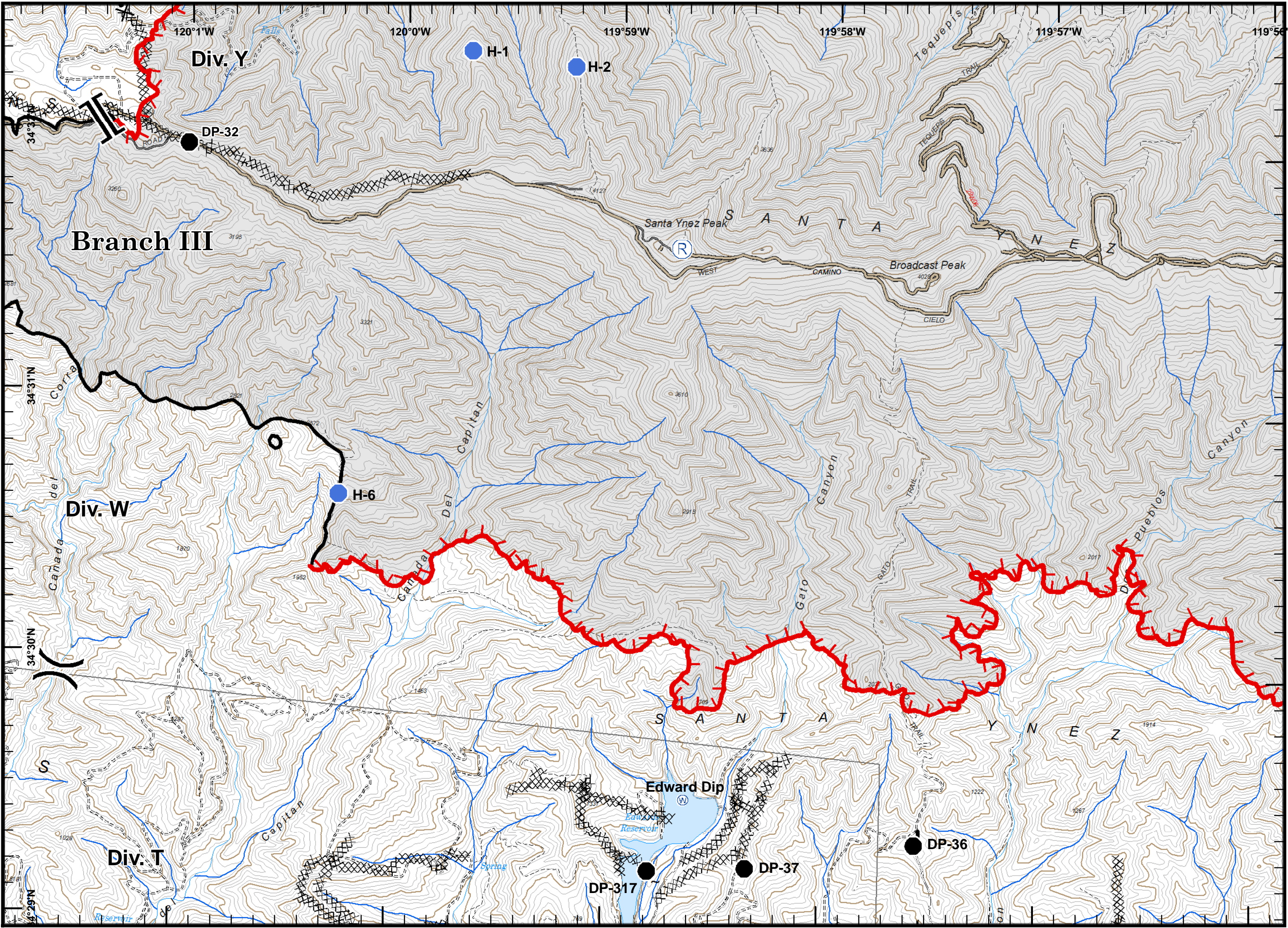
Incident Action
Plan Map

-  Division
-  Branch
-  Drop Point
-  Helispot
-  Sling Site
-  Water Source
-  Uncontrolled Fire Edge
-  Completed Dozer Line
-  Completed Line
-  Road as Completed Line
-  Proposed Dozer Line
-  Avoidance Area
-  Avoidance Area
-  Roads

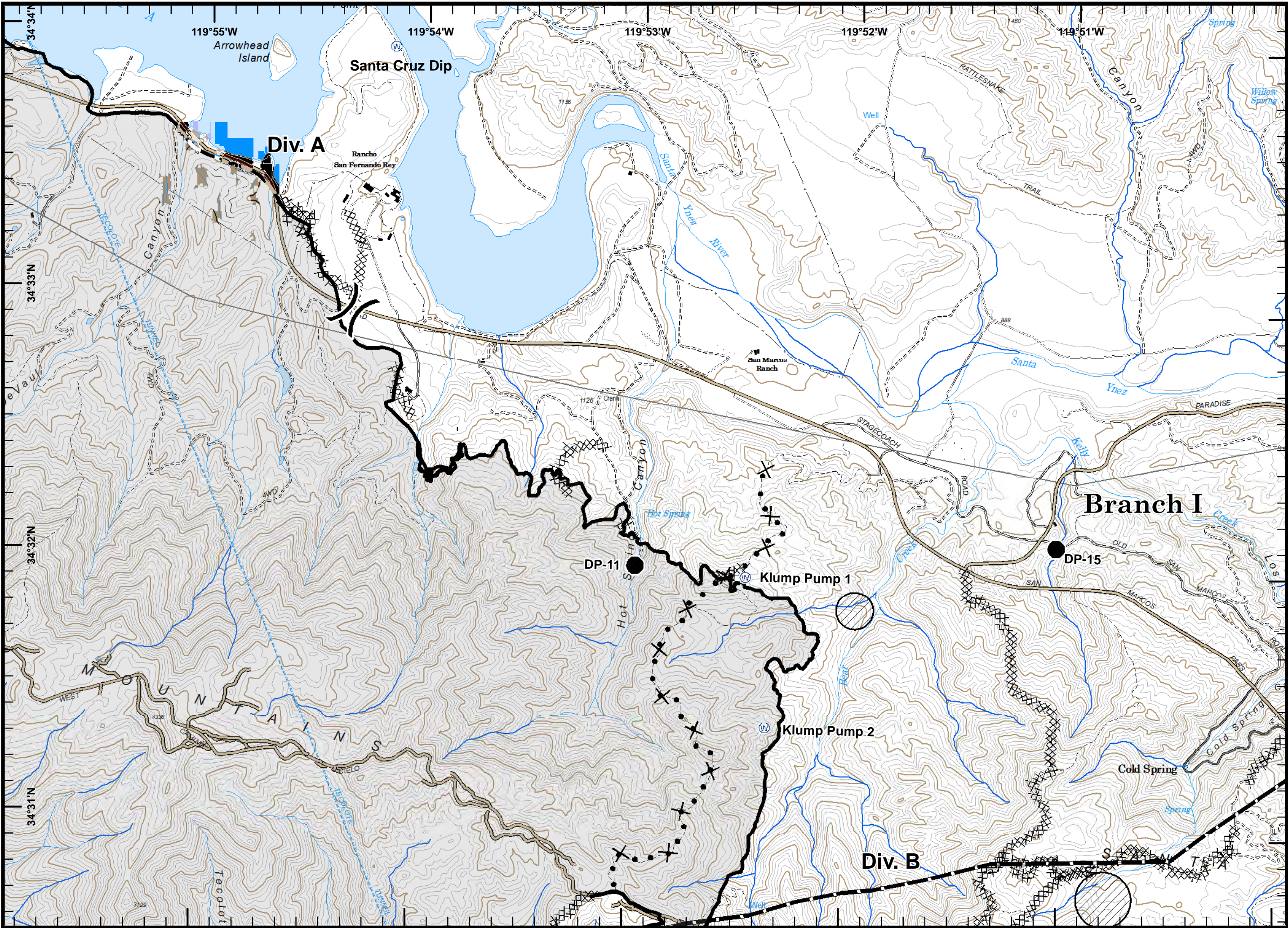


Incident Action
Plan Map

() Division
[] Branch
● Drop Point
● Helispot
Ⓡ Repeater
Ⓜ Water Source
▬ Uncontrolled Fire Edge
XX Completed Dozer Line
— Completed Line
— Roads



Incident Action Plan Map



- Division
- Drop Point
- Water Source
- Completed Dozer Line
- Completed Line
- Proposed Dozer Line
- Transmission Line
- Avoidance Area
- Roads




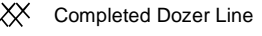
Incident Action Plan Map

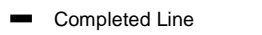
 Division

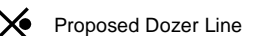
 Branch

 Drop Point

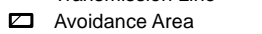
 Water Source

 Completed Dozer Line

 Completed Line

 Proposed Dozer Line

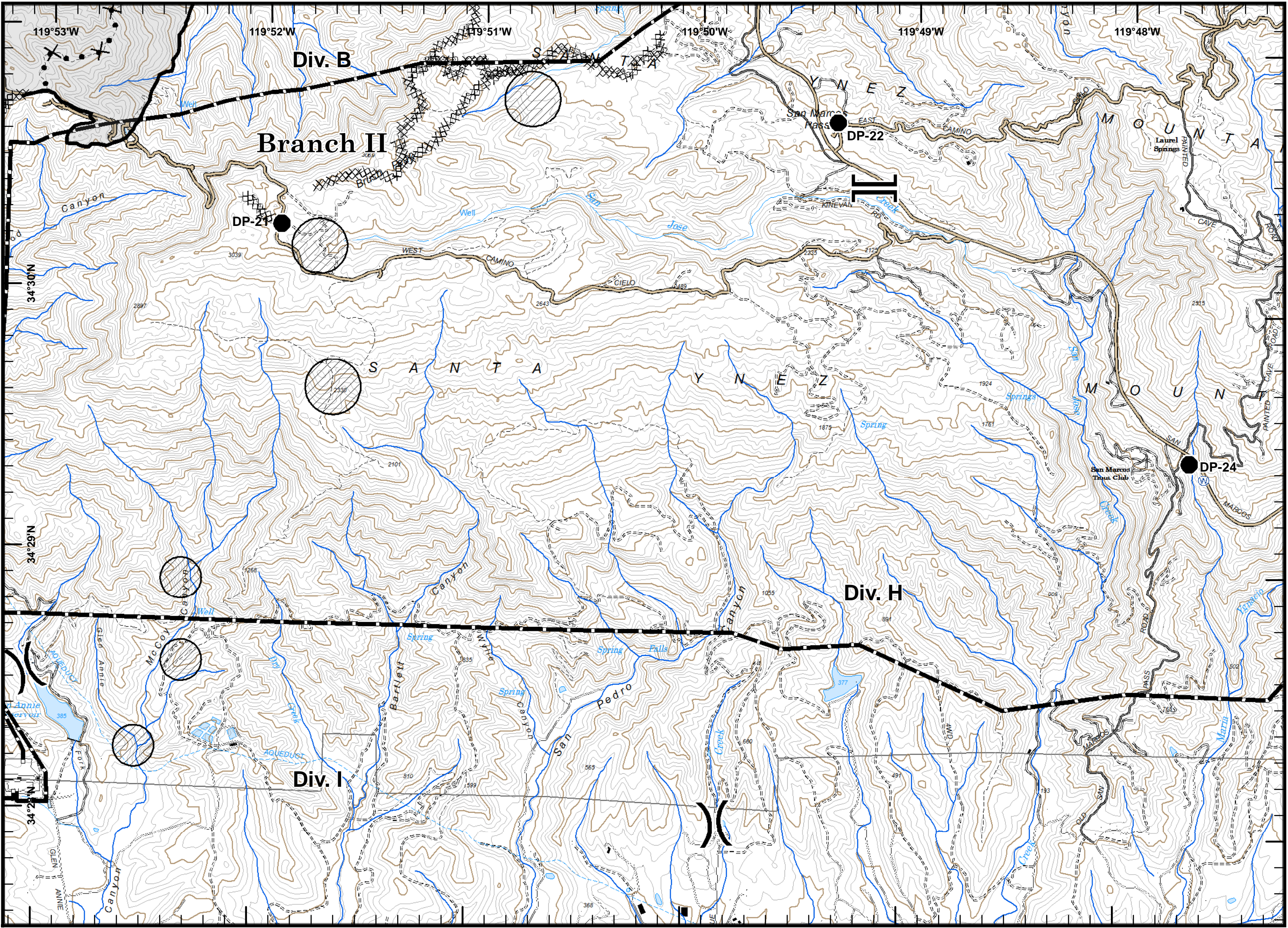
 Transmission Line

 Avoidance Area

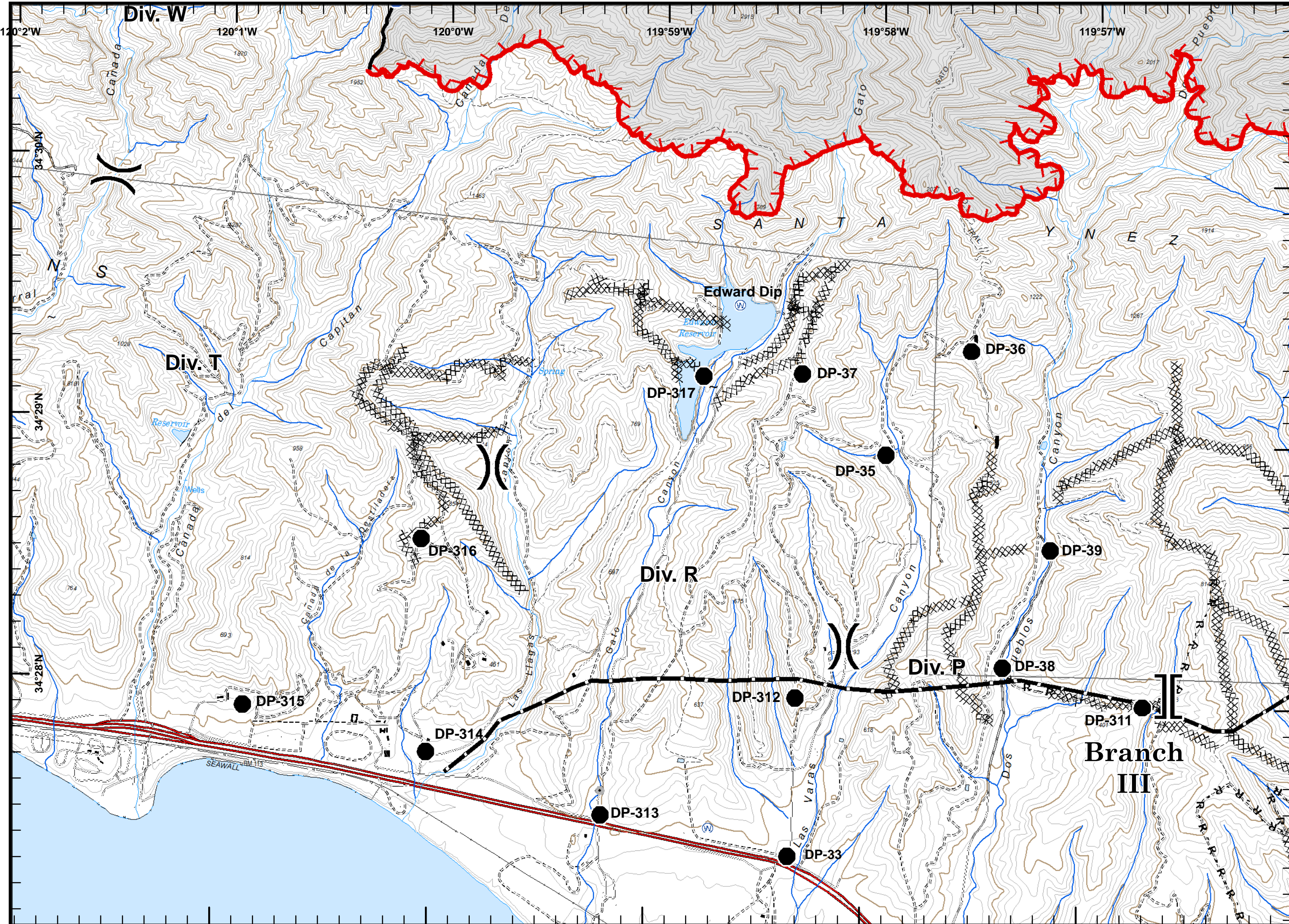
 Roads

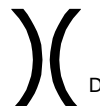


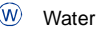
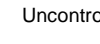
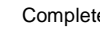
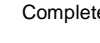
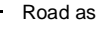
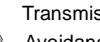
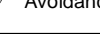


B5








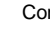
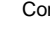



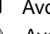

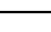
Incident Action
Plan Map

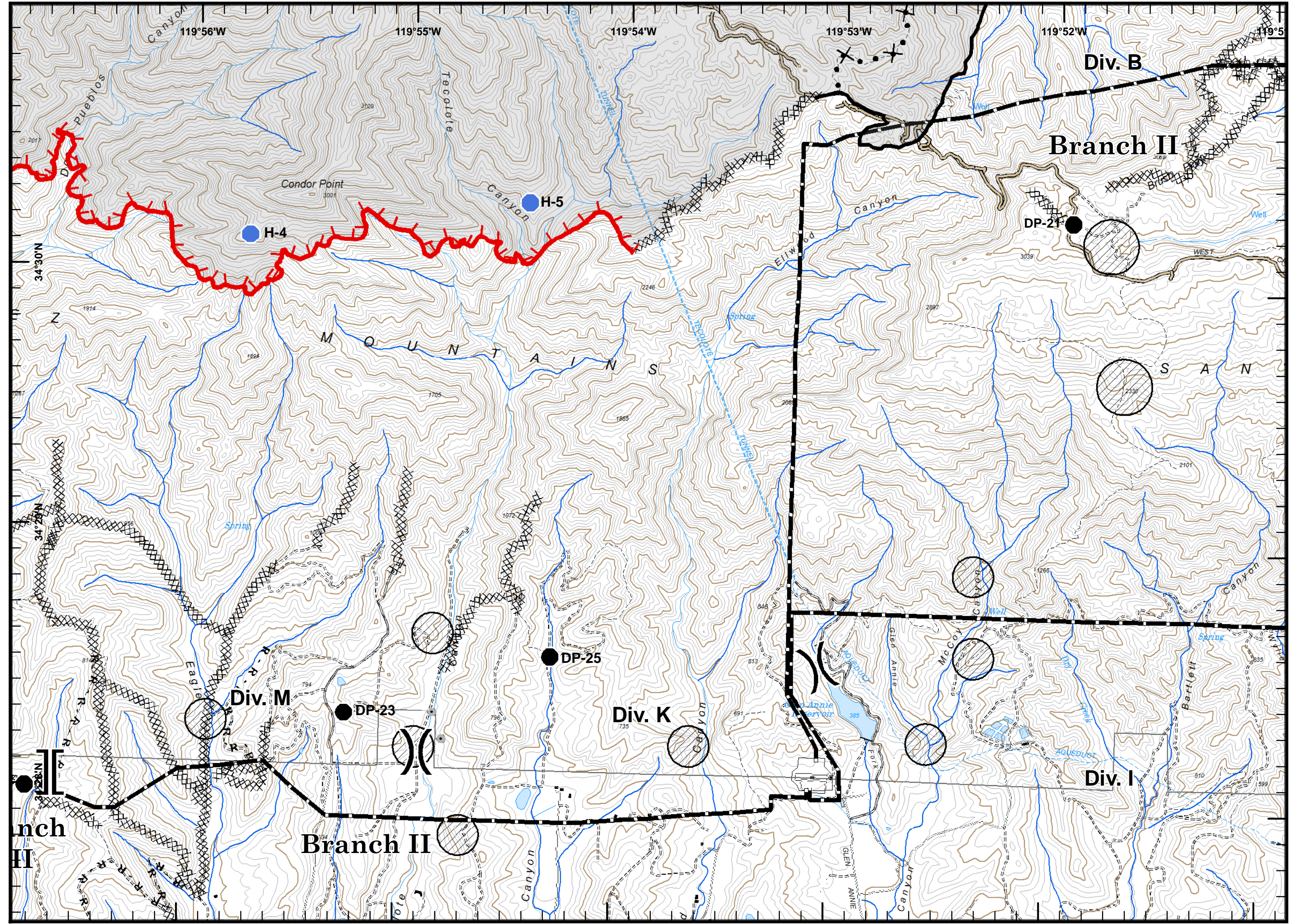


-  Division
-  Branch
-  Drop Point
-  Water Source
-  Uncontrolled Fire Edge
-  Completed Dozer Line
-  Completed Line
-  Road as Completed Line
-  Transmission Line
-  Avoidance Area



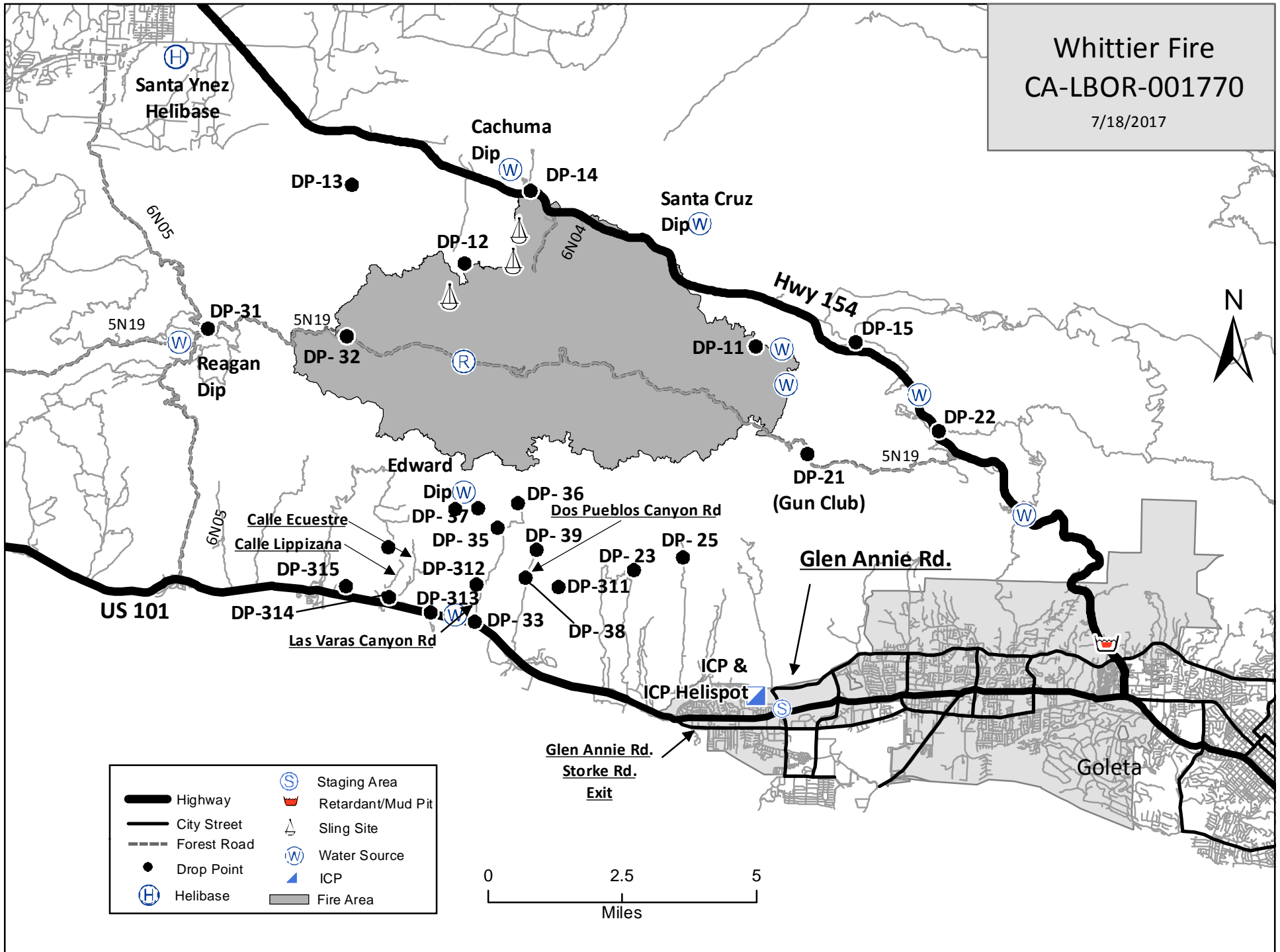
Incident Action Plan Map

-  Division
-  Branch
-  Drop Point
-  Helispot
-  Uncontrolled Fire Edge
-  Completed Dozer Line
-  Completed Line
-  Road as Completed Line
-  Proposed Dozer Line
-  Transmission Line
-  Avoidance Area
-  Avoidance Area
-  Roads



Whittier Fire CA-LBOR-001770

7/18/2017



- | | |
|-------------|-------------------|
| Highway | Staging Area |
| City Street | Retardant/Mud Pit |
| Forest Road | Sling Site |
| Drop Point | Water Source |
| Helibase | ICP |
| Fire Area | |

