

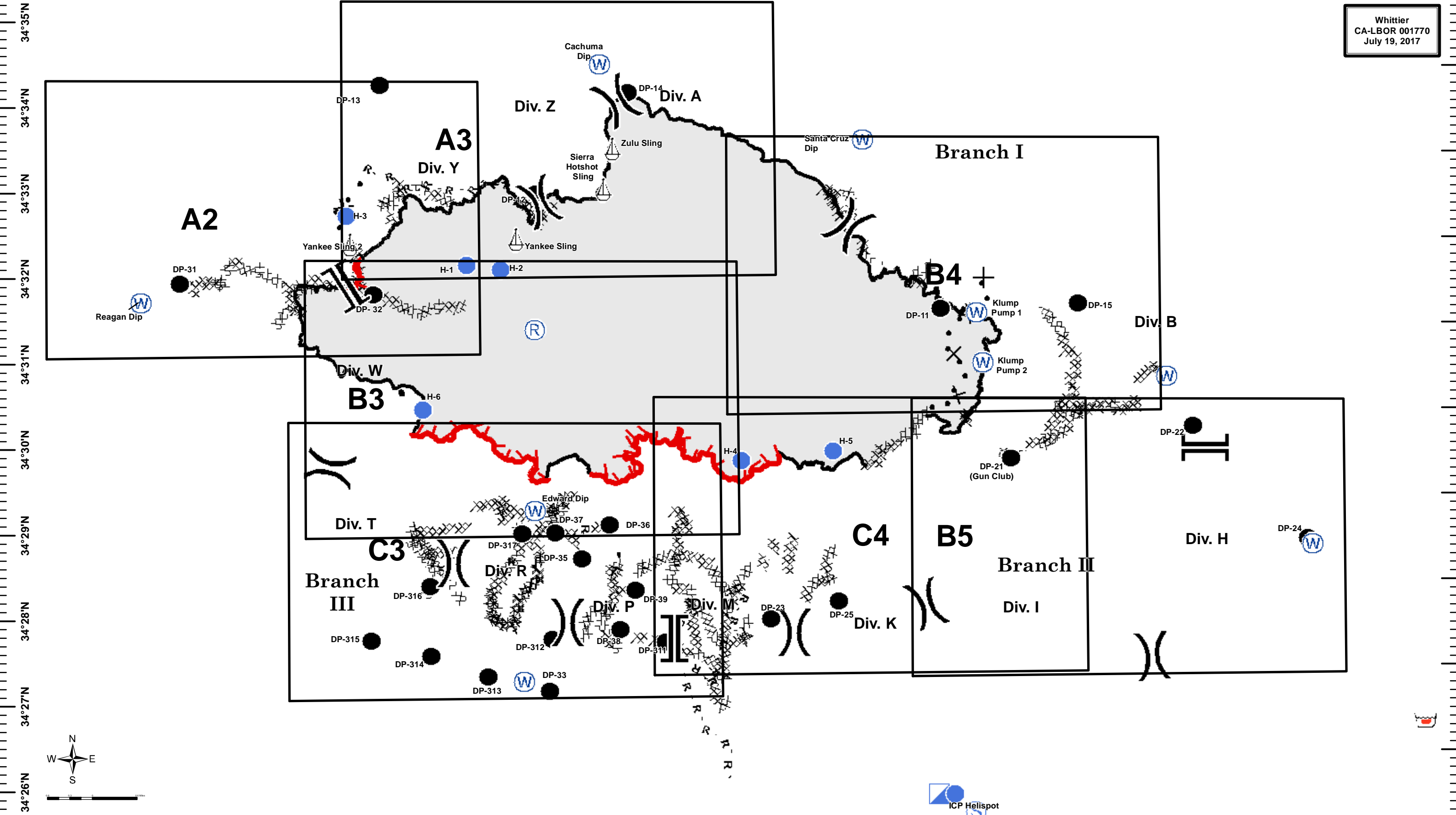
120°6'W 120°5'W 120°4'W 120°3'W 120°2'W 120°1'W 120°0'W 119°59'W 119°58'W 119°57'W 119°56'W 119°55'W 119°54'W 119°53'W 119°52'W 119°51'W 119°50'W 119°49'W 119°48'W



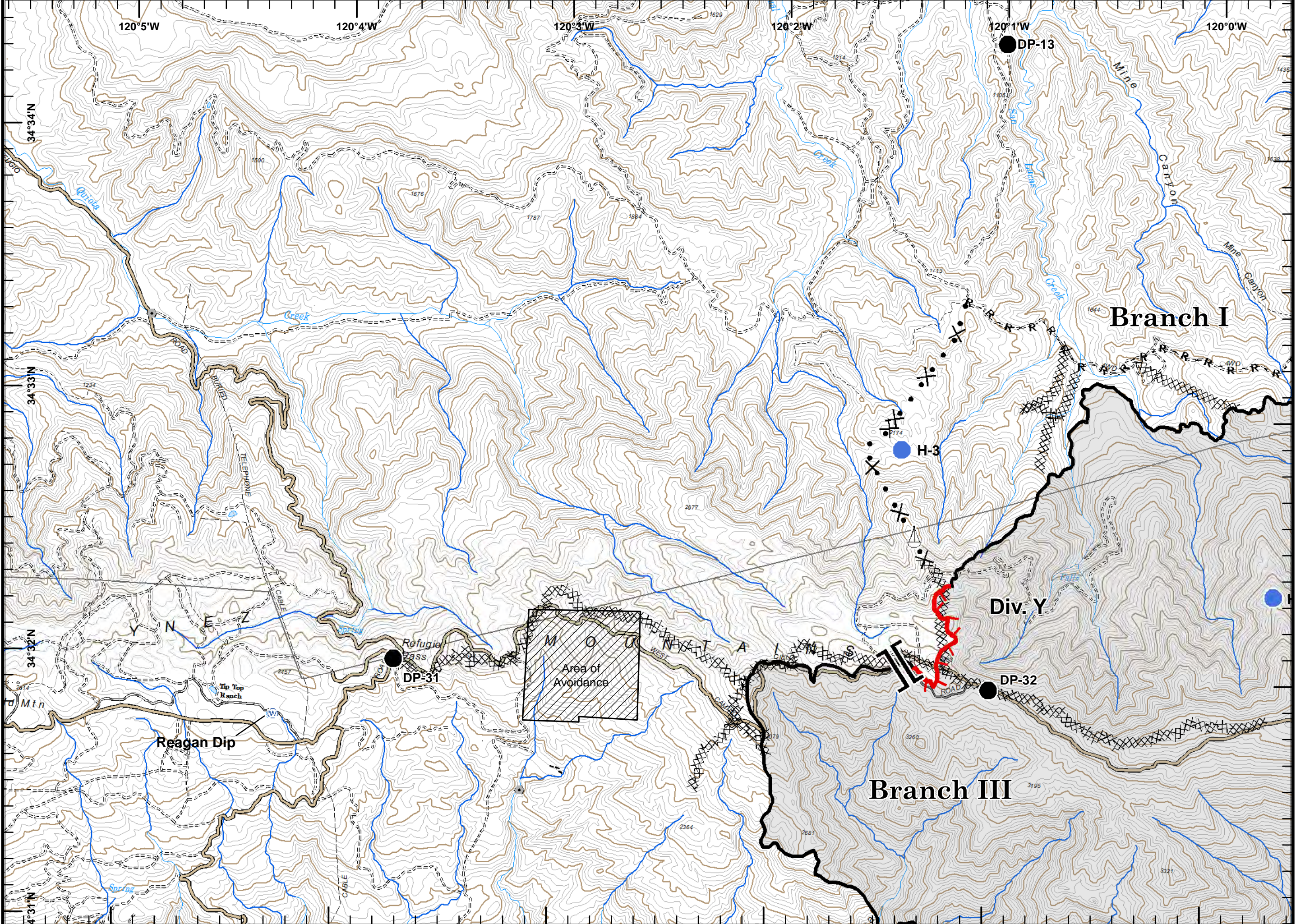
# Page Grid Index Map



Whittier  
CA-LBOR 001770  
July 19, 2017



Incident Action  
Plan Map






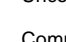
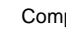
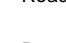

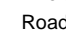


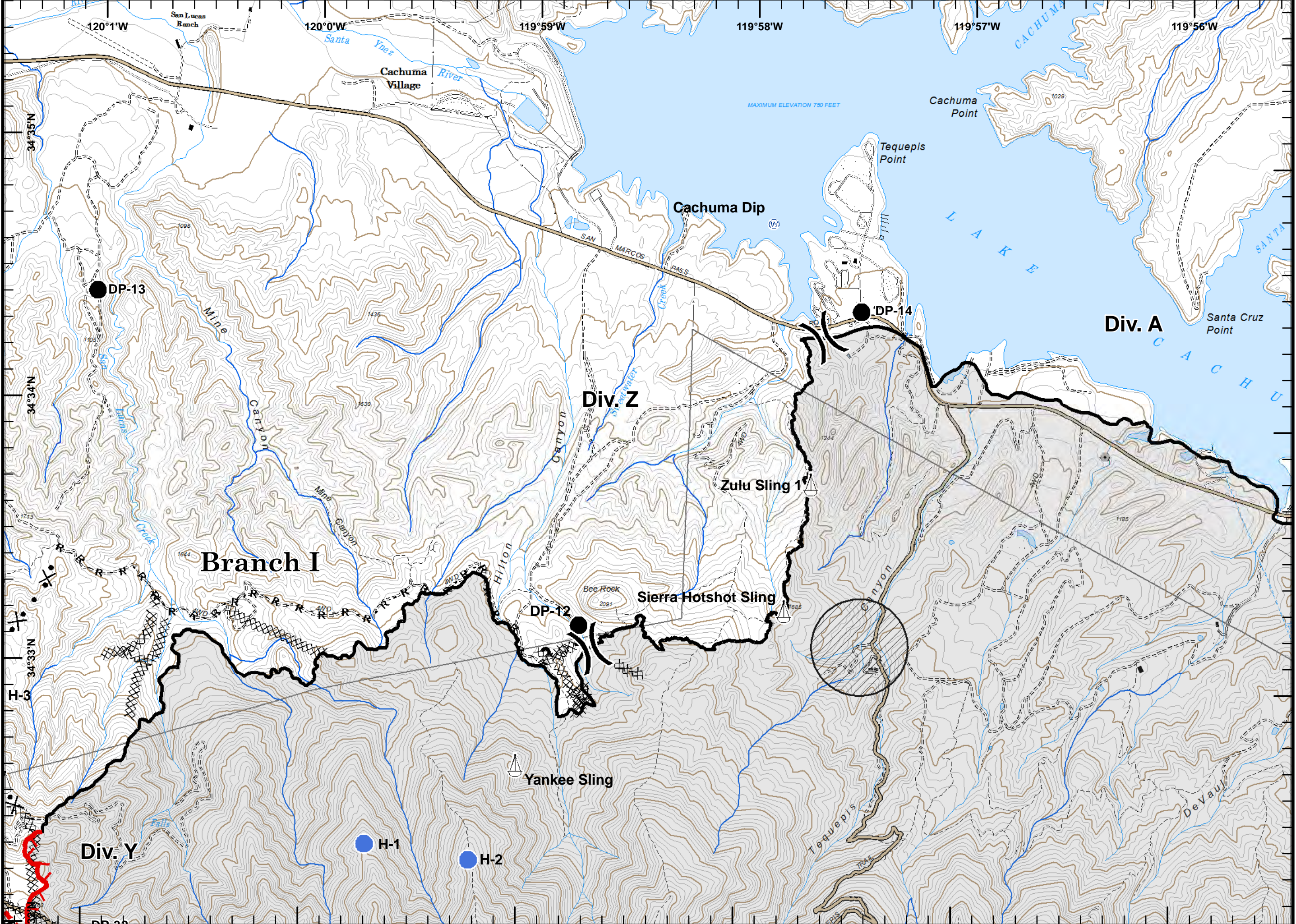
**Legend**

- [ ] Branch
- Drop Point
- Helispot
- ⚓ Sling Site
- Ⓜ Water Source
- 🔴 Uncontrolled Fire Edge
- XX Completed Dozer Line
- Completed Line
- R- Road as Completed Line
- X Proposed Dozer Line
- ⊙ Avoidance Area
- Roads


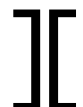




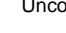
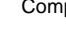
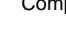
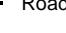
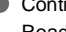



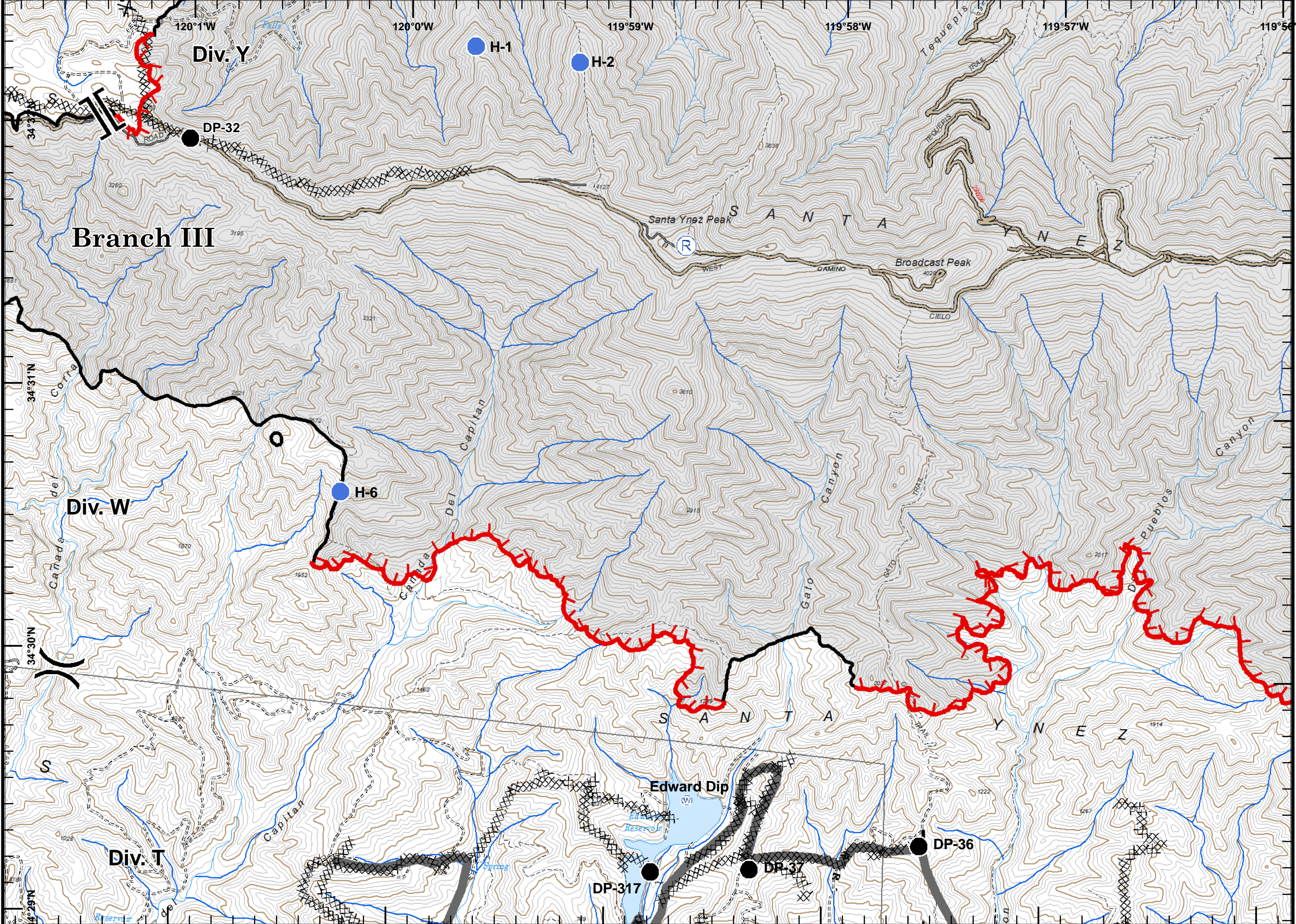
Incident Action  
Plan Map

-  Division
-  Branch
-  Drop Point
-  Helispot
-  Sling Site
-  Water Source
-  Uncontrolled Fire Edge
-  Completed Dozer Line
-  Completed Line
-  Road as Completed Line
-  Proposed Dozer Line
-  Avoidance Area
-  Avoidance Area
-  Roads

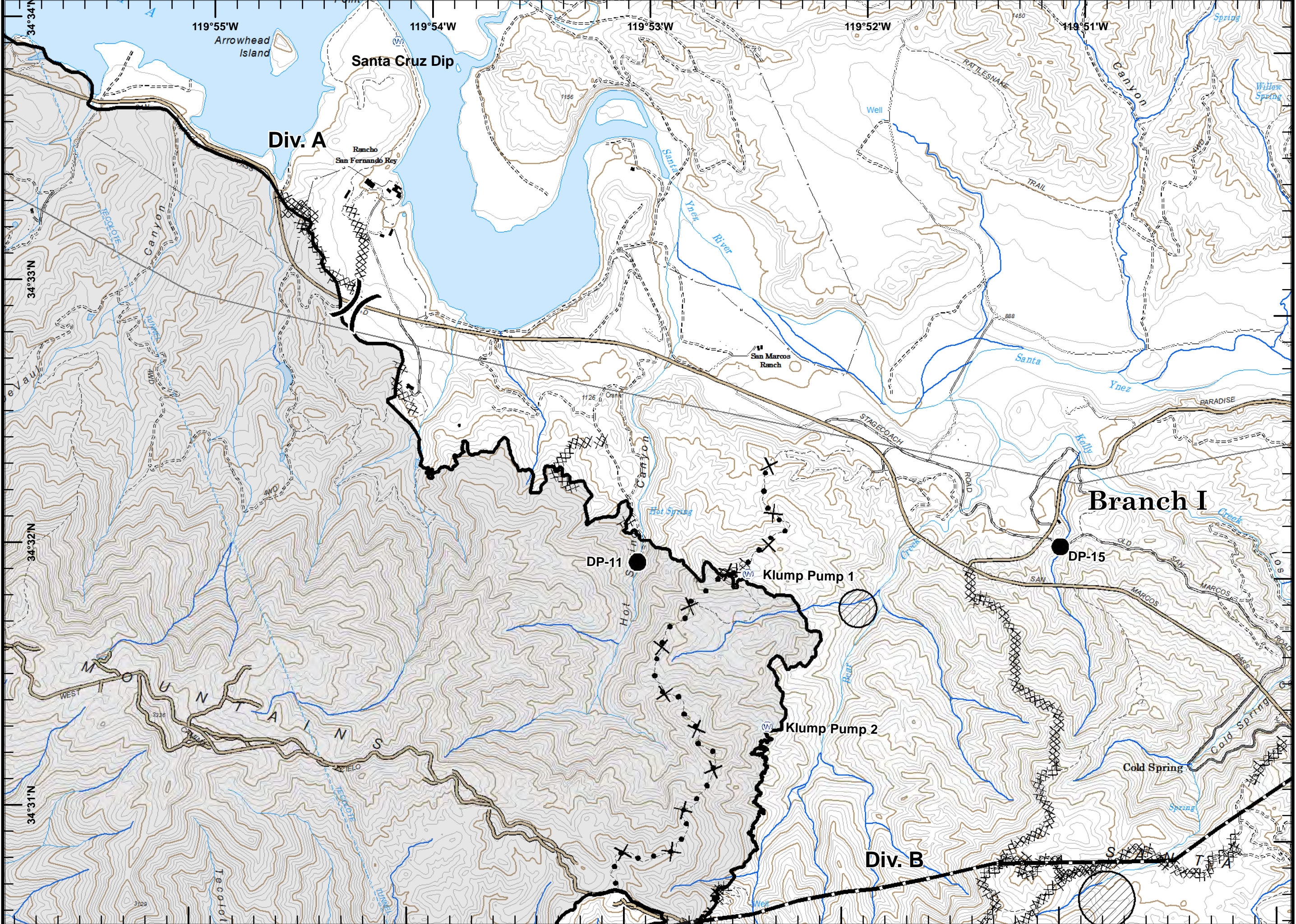


Incident Action  
Plan Map

-  Division
-  Branch
-  Drop Point
-  Helispot
-  Repeater
-  Water Source
-  Uncontrolled Fire Edge
-  Completed Dozer Line
-  Completed Line
-  Road as Completed Line
-  Contingency Line
-  Roads



Incident Action  
Plan Map



( ) Division

● Drop Point

W Water Source

⊗ Completed Dozer Line

— Completed Line

⊗ Proposed Dozer Line

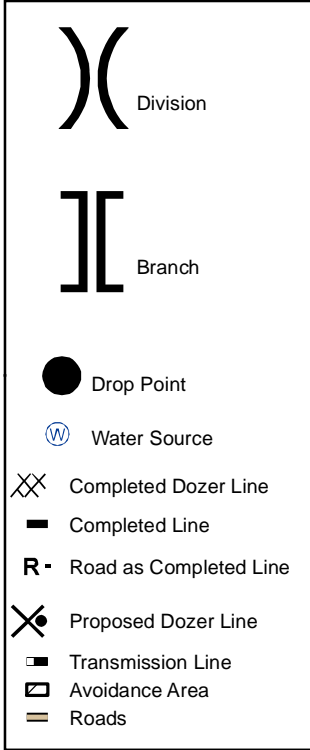
▬ Transmission Line

▭ Avoidance Area

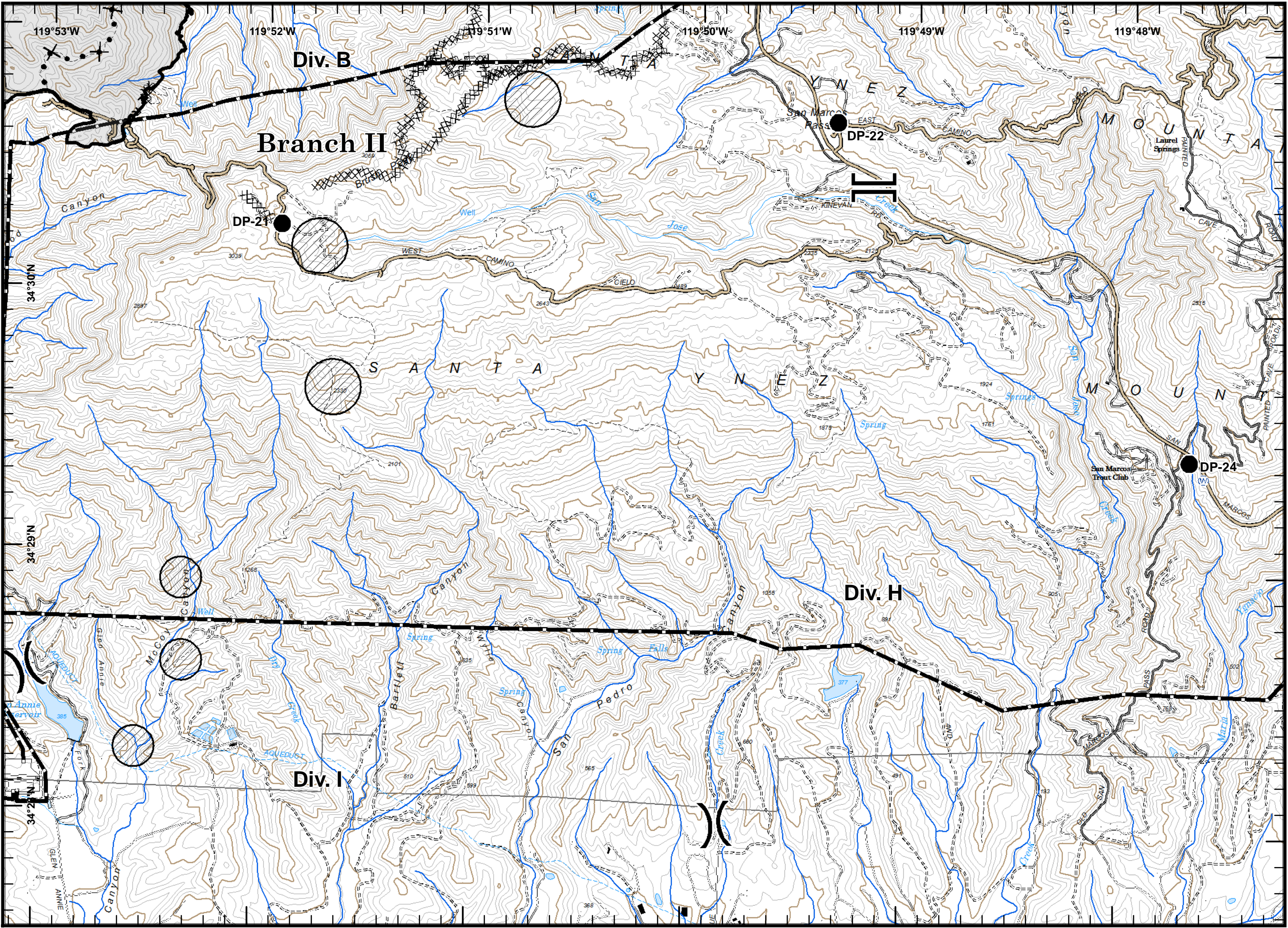
— Roads



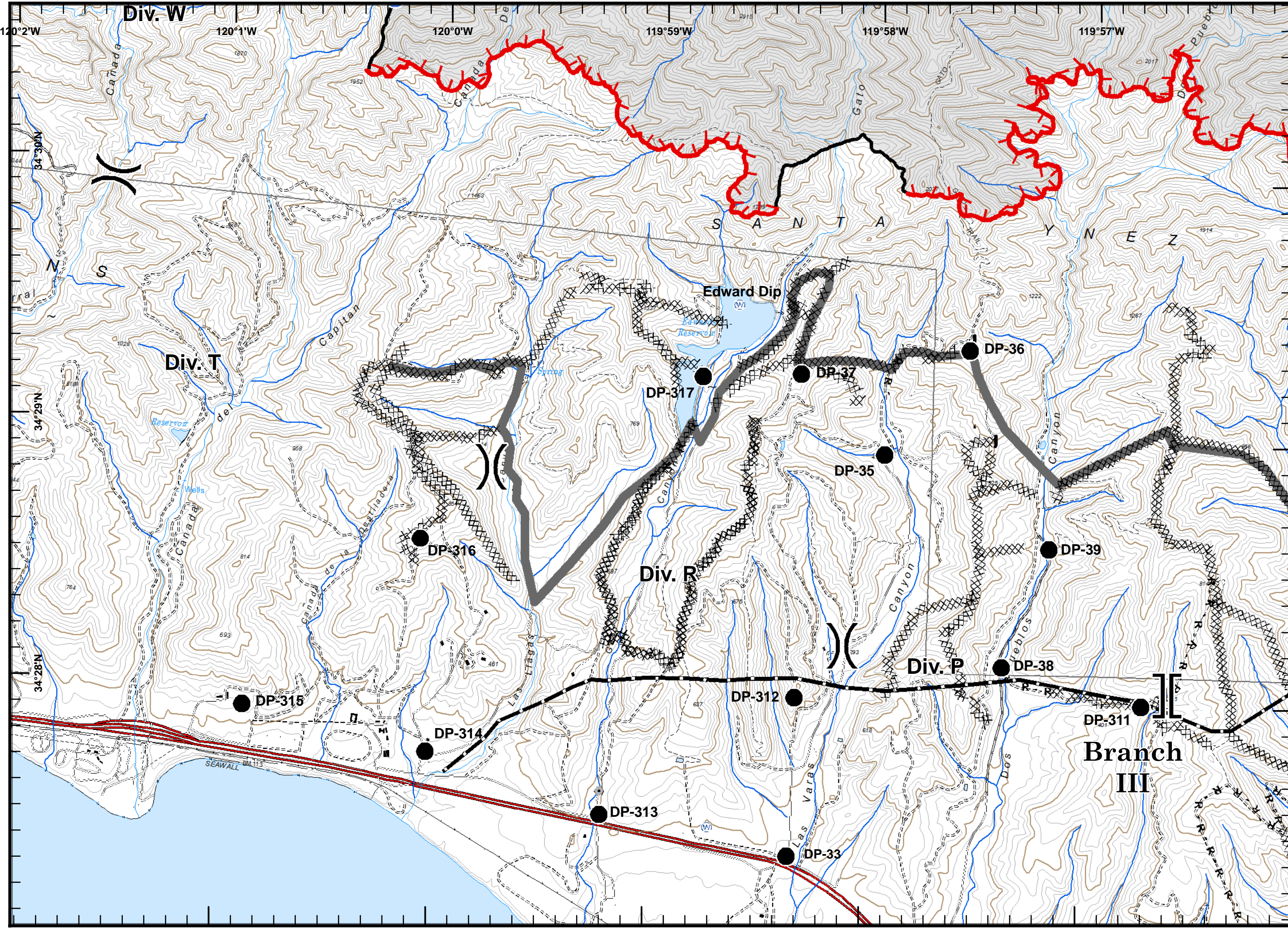
### Incident Action Plan Map



- Division
- Branch
- Drop Point
- Water Source
- Completed Dozer Line
- Completed Line
- R- Road as Completed Line
- Proposed Dozer Line
- Transmission Line
- Avoidance Area
- Roads



### Incident Action Plan Map





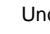
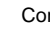
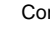



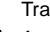
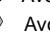




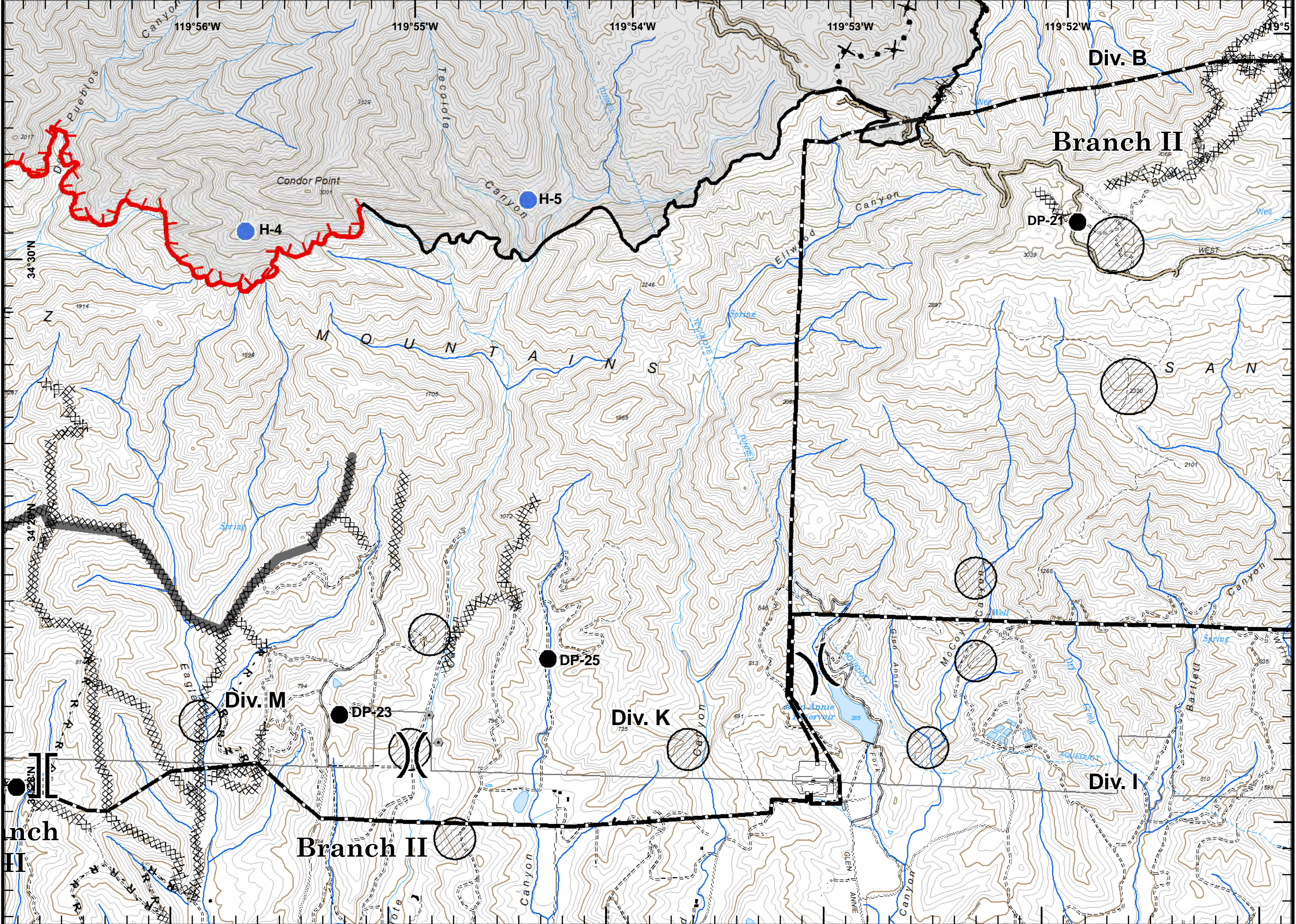
**Legend:**

- Division
- Branch
- Drop Point
- Water Source
- Uncontrolled Fire Edge
- Completed Dozer Line
- Completed Line
- Road as Completed Line
- Contingency Line
- Transmission Line
- Avoidance Area



Incident Action  
Plan Map

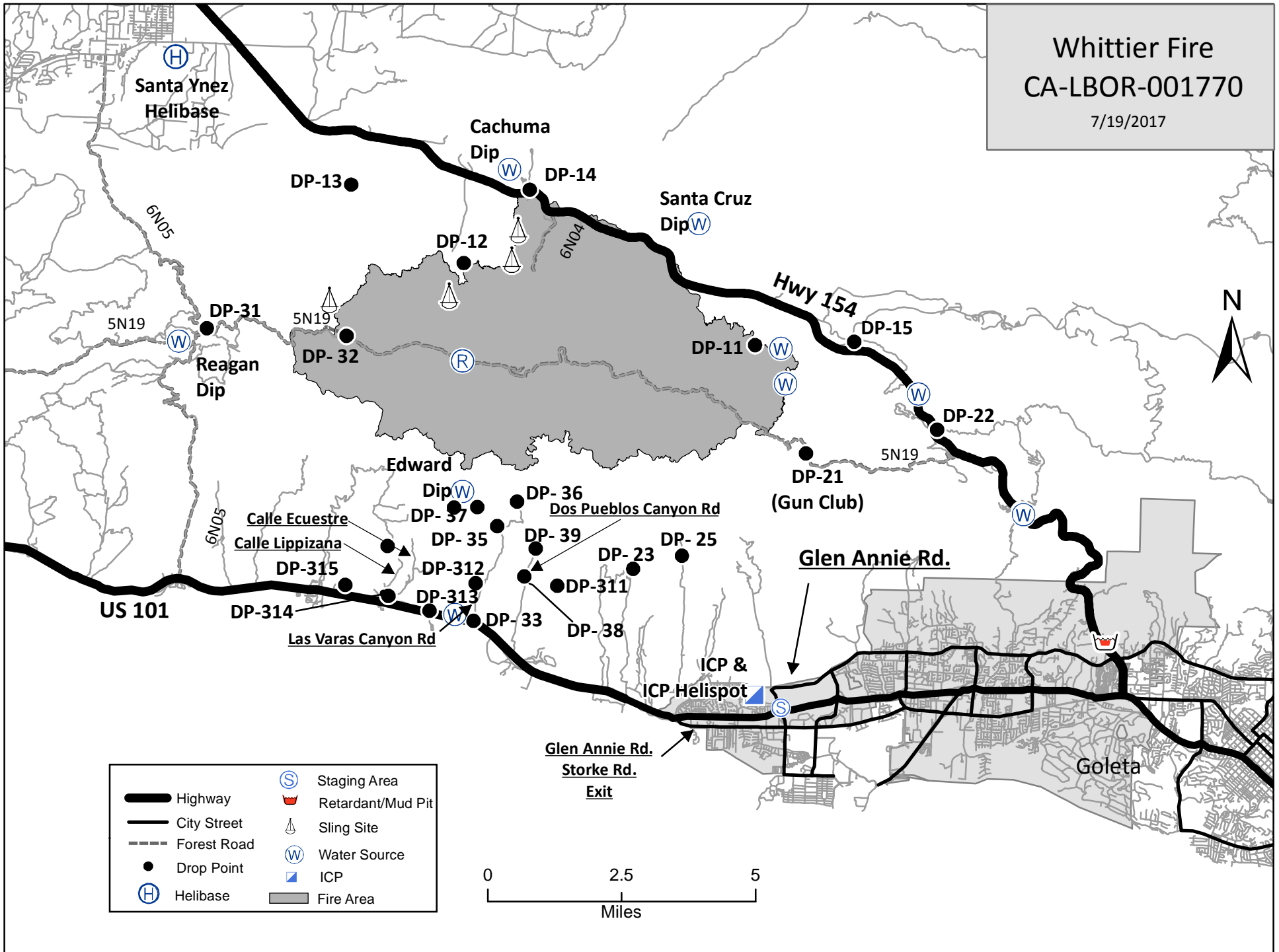
-  Division
-  Branch
-  Drop Point
-  Helispot
-  Uncontrolled Fire Edge
-  Completed Dozer Line
-  Completed Line
-  Road as Completed Line
-  Proposed Dozer Line
-  Contingency Line
-  Transmission Line
-  Avoidance Area
-  Avoidance Area
-  Roads





# Whittier Fire CA-LBOR-001770

7/19/2017



	Highway		Staging Area
	City Street		Retardant/Mud Pit
	Forest Road		Sling Site
	Drop Point		Water Source
	Helibase		ICP
	Fire Area		

