

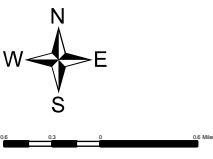
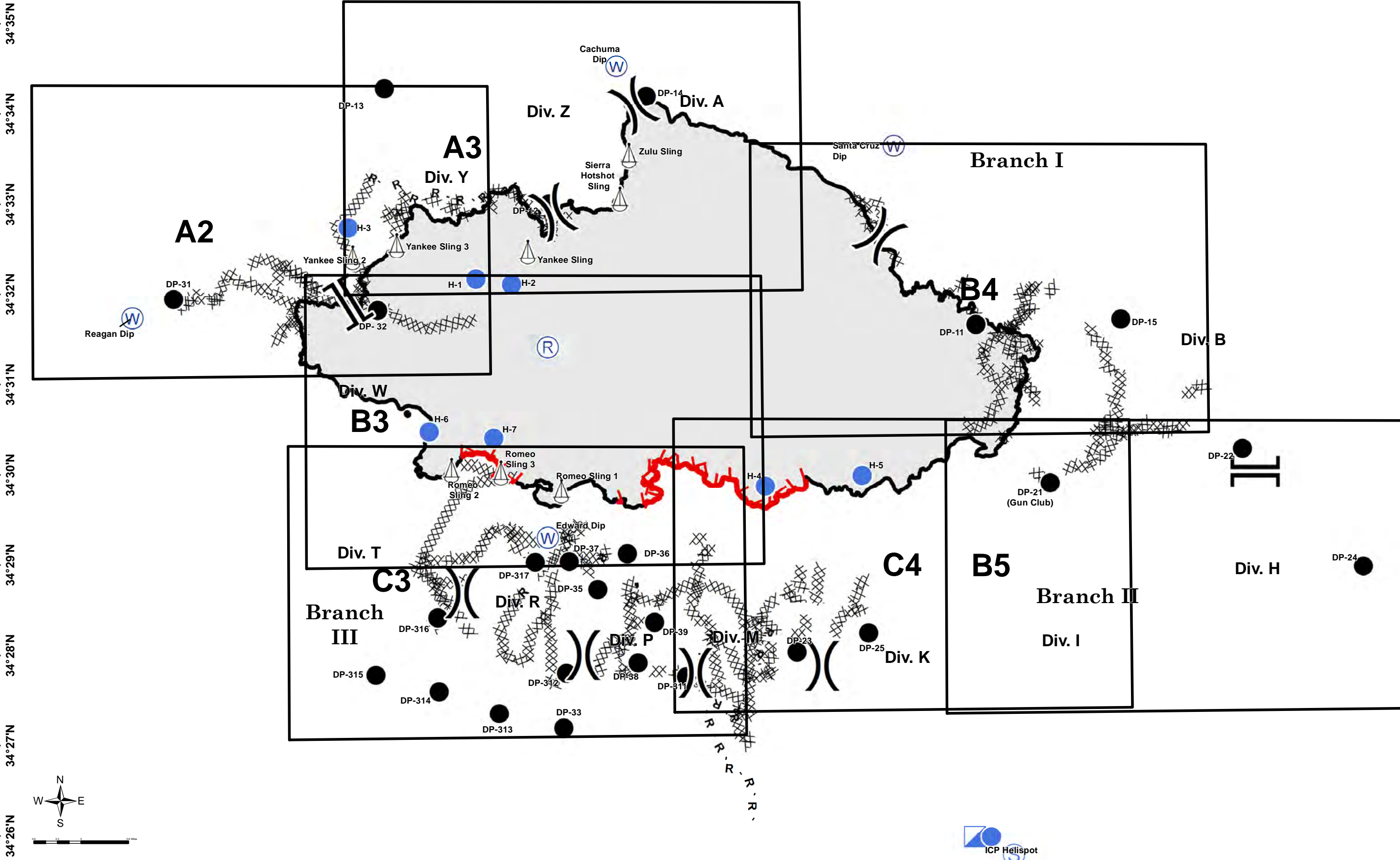
120°6'W 120°5'W 120°4'W 120°3'W 120°2'W 120°1'W 120°0'W 119°59'W 119°58'W 119°57'W 119°56'W 119°55'W 119°54'W 119°53'W 119°52'W 119°51'W 119°50'W 119°49'W 119°48'W



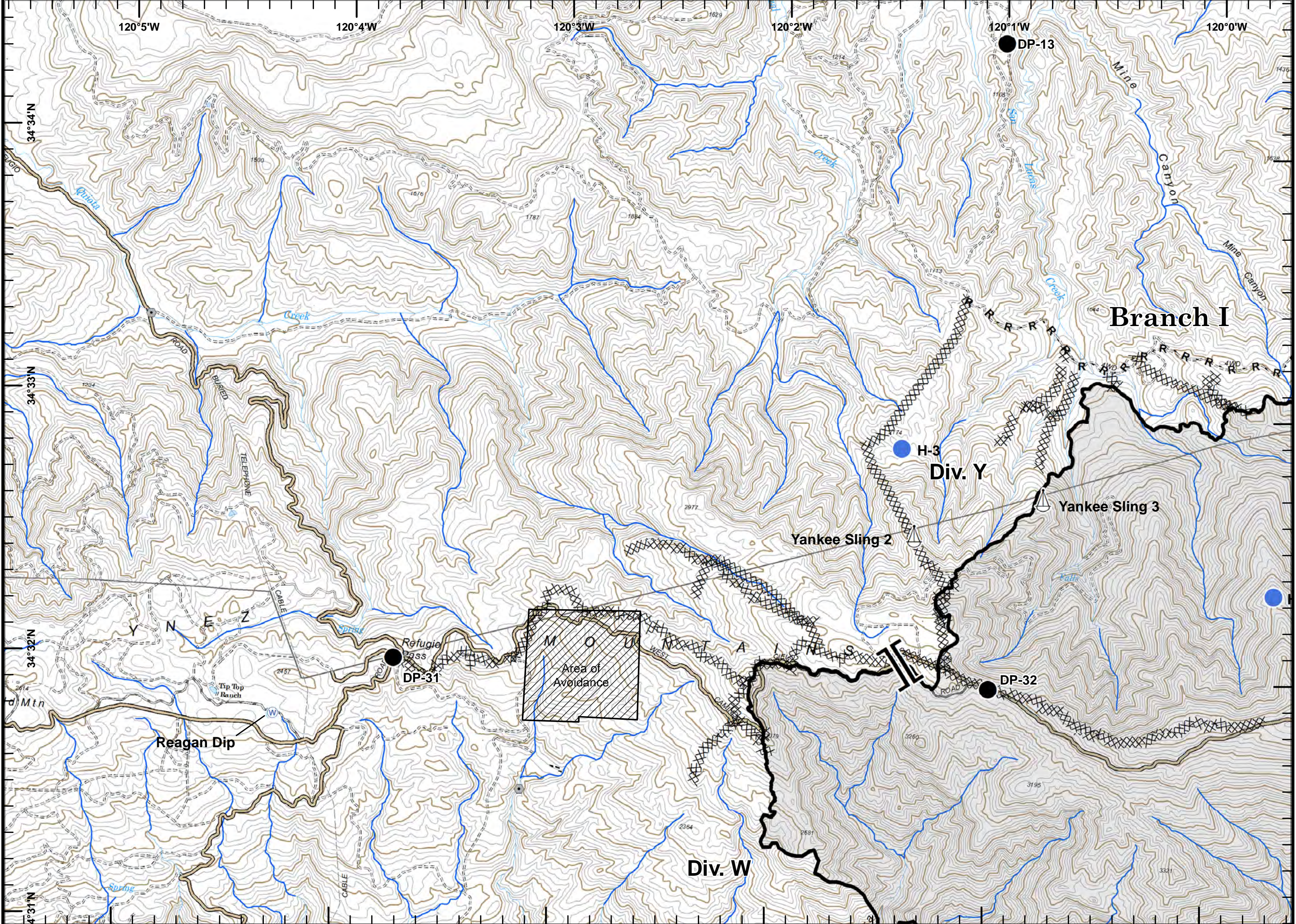
# Page Grid Index Map



Whittier  
CA-LBOR 001770  
July 21, 2017



Incident Action  
Plan Map

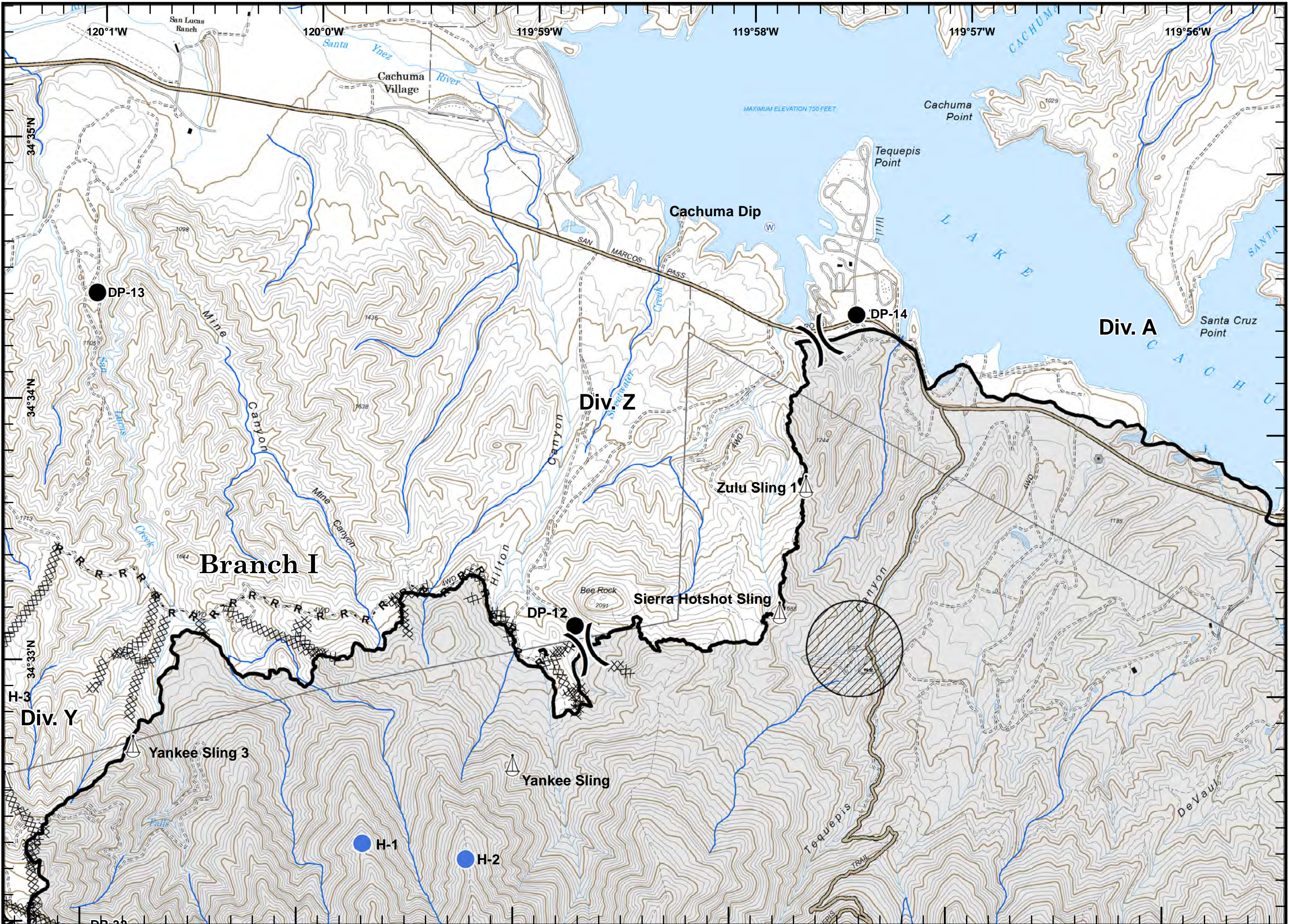


Legend:

- Branch
- Drop Point
- Helispot
- Sling Site
- Water Source
- Completed Dozer Line
- Completed Line
- R- Road as Completed Line
- Avoidance Area
- Roads



Incident Action  
Plan Map

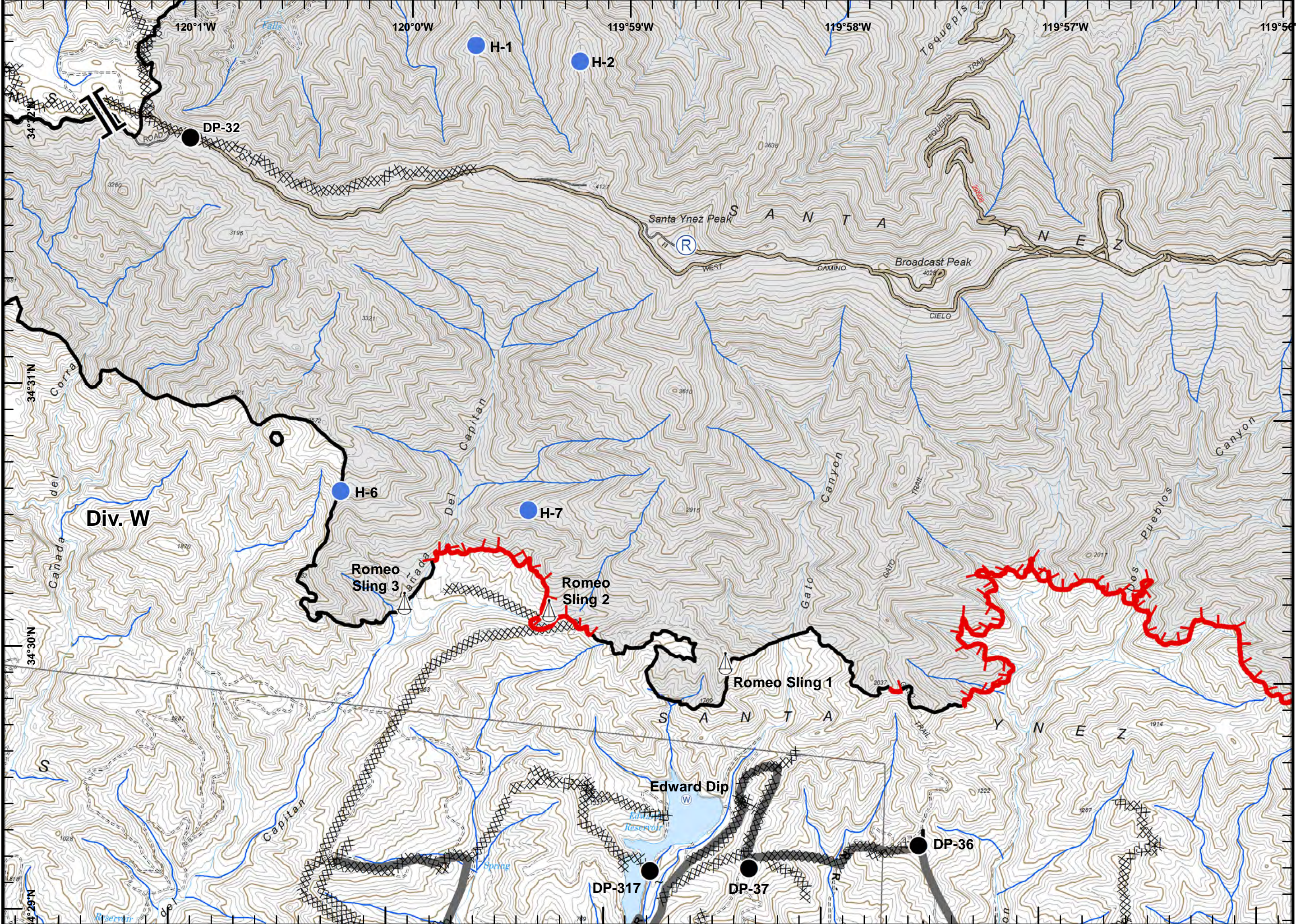


Legend for Incident Action Plan Map:

- Division: ) (
- Branch: ] [
- Drop Point: ●
- Helispot: ● (blue)
- Sling Site: ⚙
- Water Source: W (in a circle)
- Completed Dozer Line: X
- Completed Line: — (thick black)
- Road as Completed Line: R- (with hatching)
- Avoidance Area: □ (with hatching)
- Avoidance Area: ○ (with hatching)
- Roads: — (dashed)



### Incident Action Plan Map

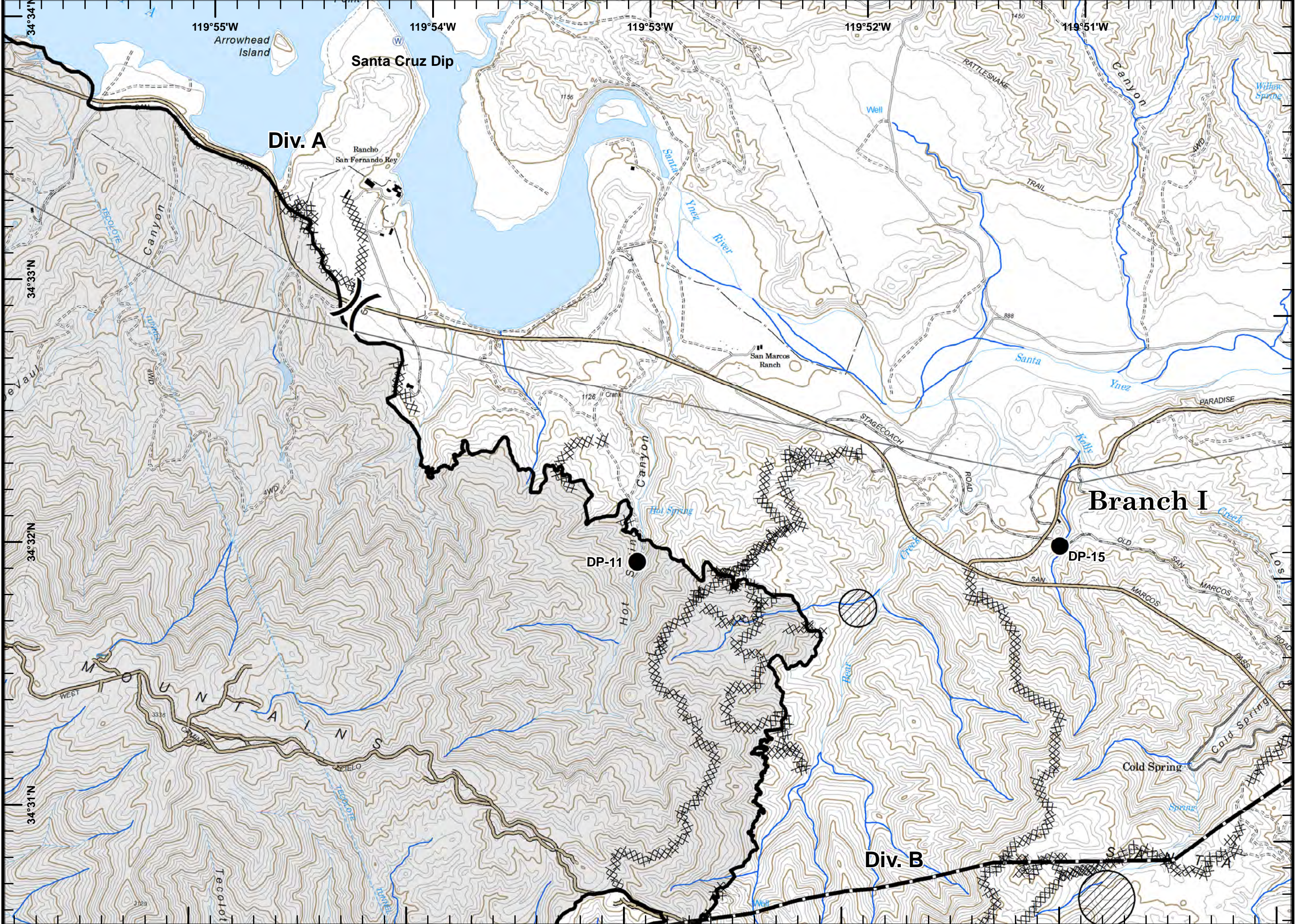


**Legend**

- Branch
- Drop Point
- Helispot
- Repeater
- Sling Site
- Water Source
- Uncontrolled Fire Edge
- Completed Dozer Line
- Completed Line
- Road as Completed Line
- Contingency Line
- Roads



Incident Action  
Plan Map



) ( Division

● Drop Point

W Water Source

X X Completed Dozer Line

— Completed Line

R- Road as Completed Line

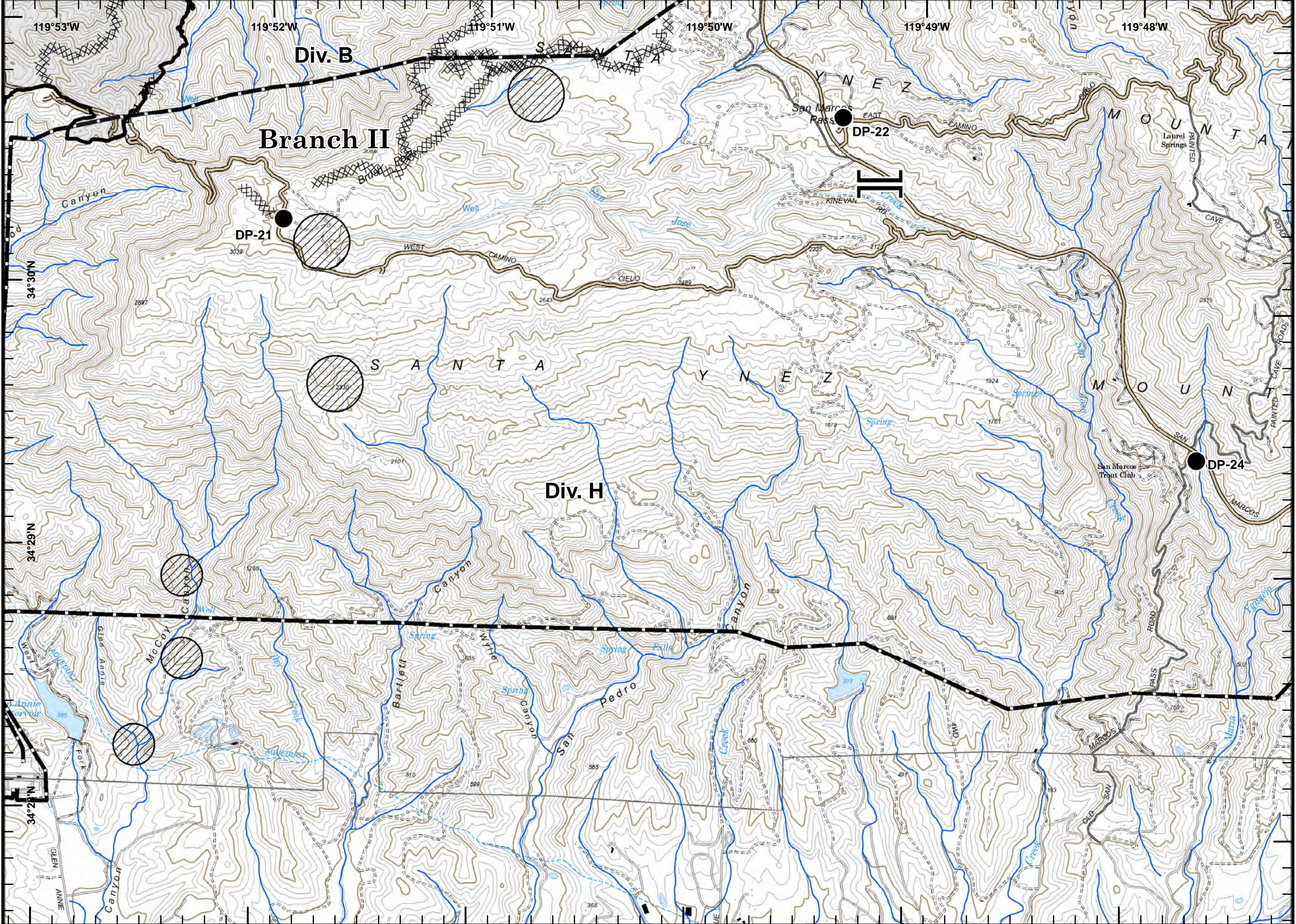
— Transmission Line

▨ Avoidance Area

— Roads



Incident Action  
Plan Map

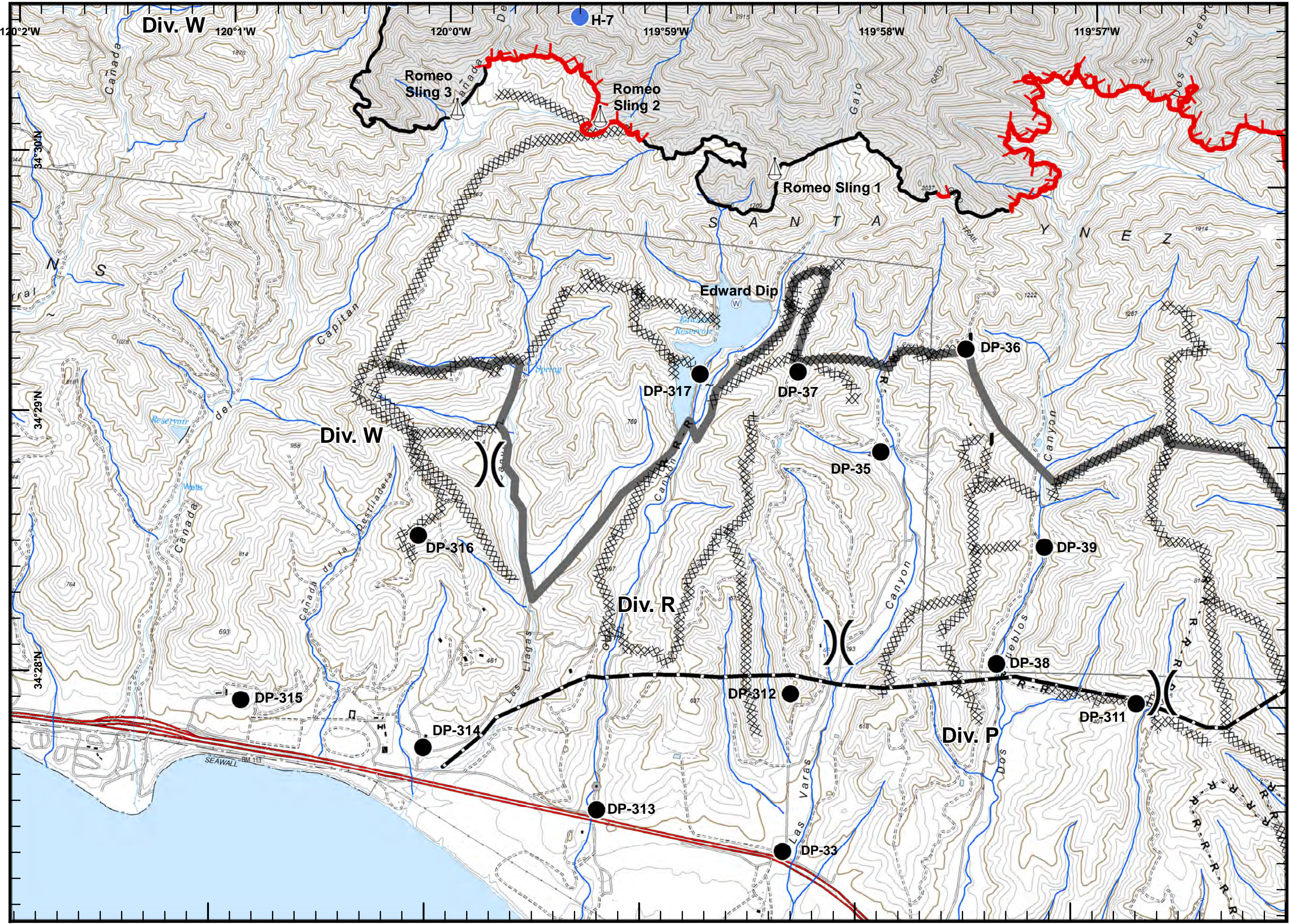


Legend:

- Branch
- Drop Point
- Completed Dozer Line
- Completed Line
- Road as Completed Line
- Transmission Line
- Avoidance Area
- Roads

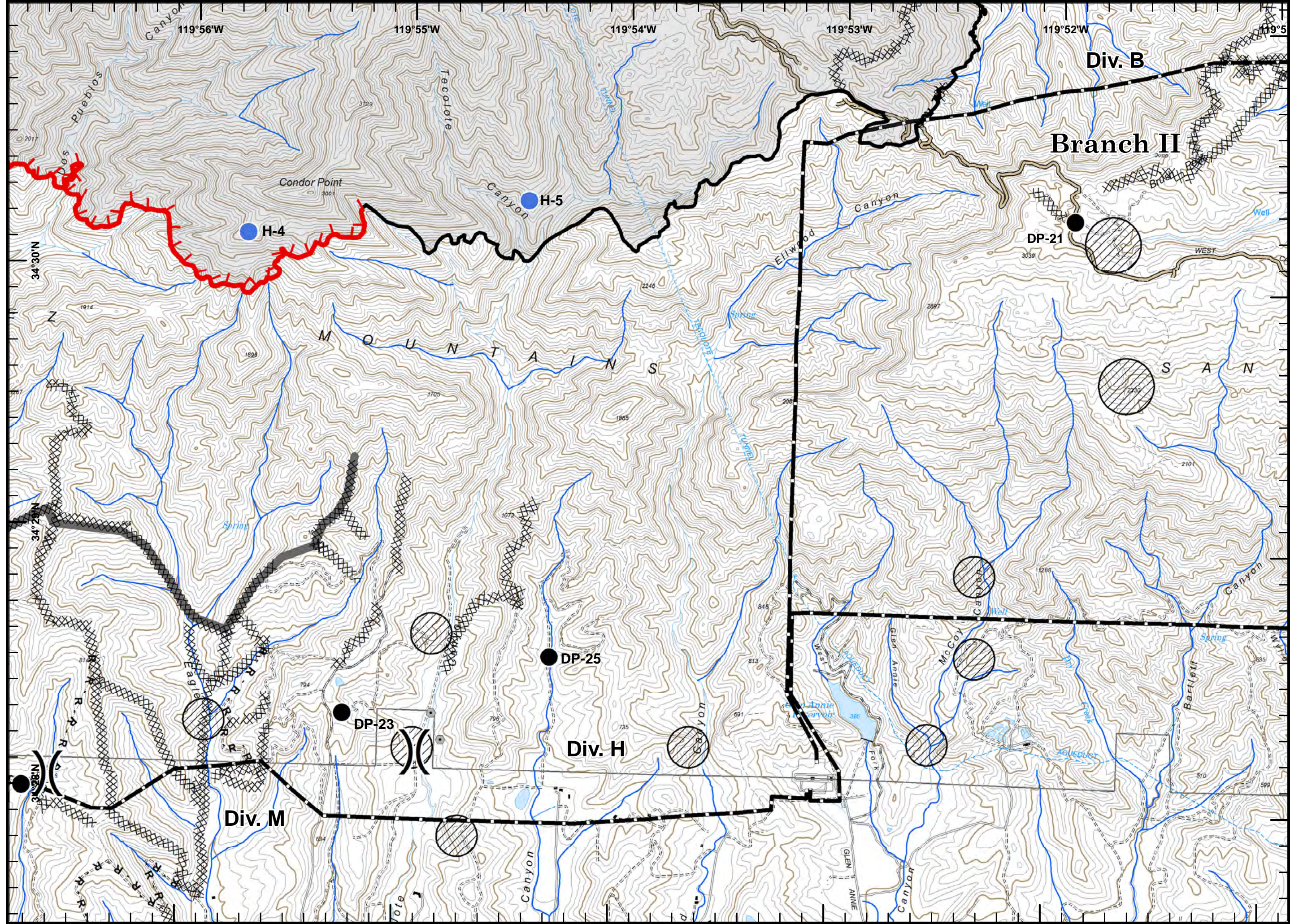


### Incident Action Plan Map



- ( ) Division
- Drop Point
- ⚓ Sling Site
- W Water Source
- ▬ Uncontrolled Fire Edge
- ⊗ Completed Dozer Line
- ▬ Completed Line
- R- Road as Completed Line
- ▬ Contingency Line
- ▬ Transmission Line
- Avoidance Area





Incident Action  
Plan Map

- Division
- Drop Point
- Helispot
- Uncontrolled Fire Edge
- Completed Dozer Line
- Completed Line
- Road as Completed Line
- Contingency Line
- Transmission Line
- Avoidance Area
- Avoidance Area
- Roads



C4



# Whittier Fire CA-LBOR-001770

7/21/2017

