

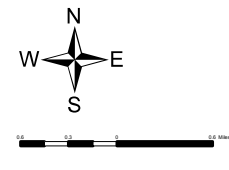
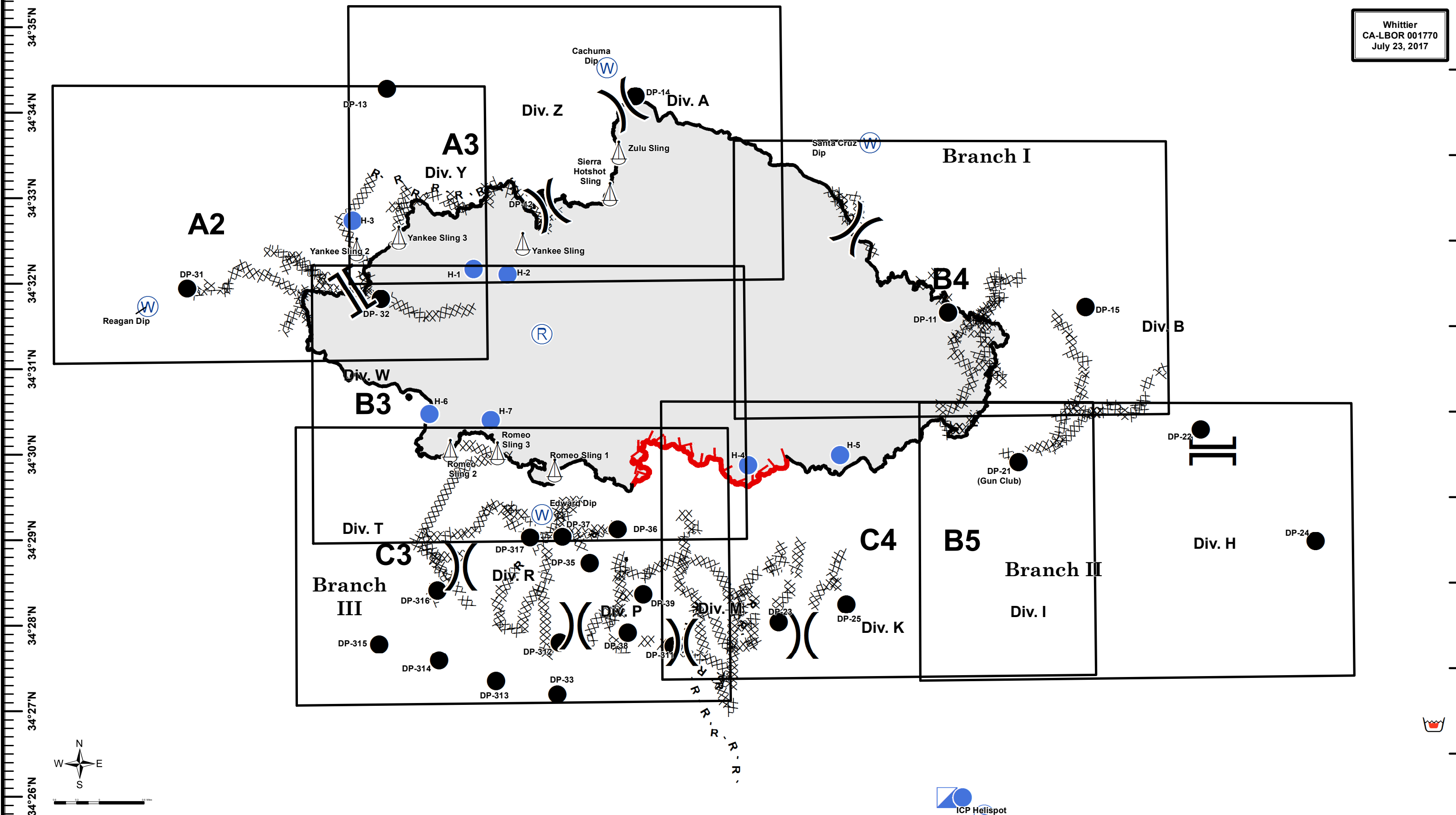
120°6'W 120°5'W 120°4'W 120°3'W 120°2'W 120°1'W 120°0'W 119°59'W 119°58'W 119°57'W 119°56'W 119°55'W 119°54'W 119°53'W 119°52'W 119°51'W 119°50'W 119°49'W 119°48'W



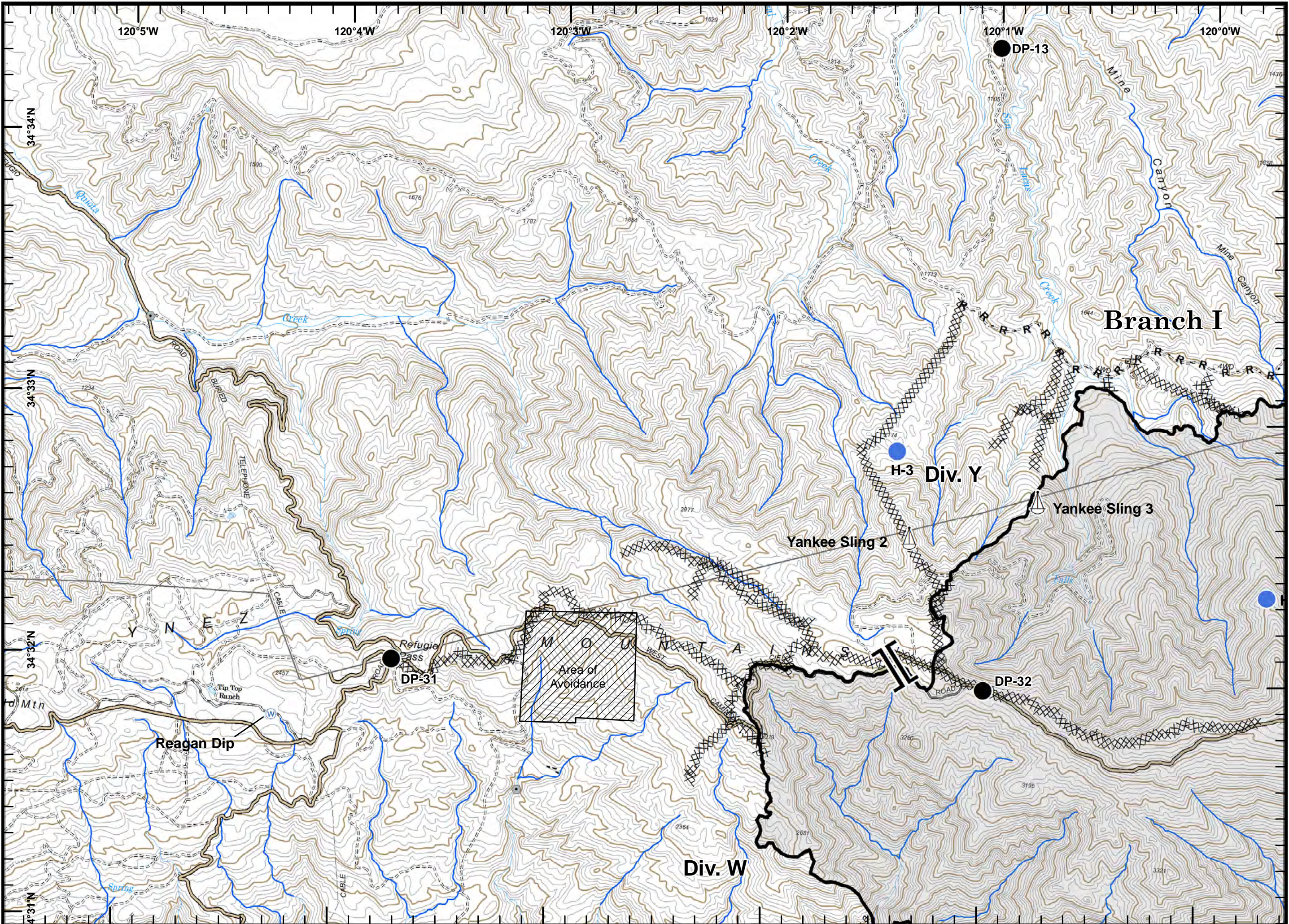
Page Grid Index Map



Whittier
CA-LBOR 001770
July 23, 2017



Incident Action
Plan Map

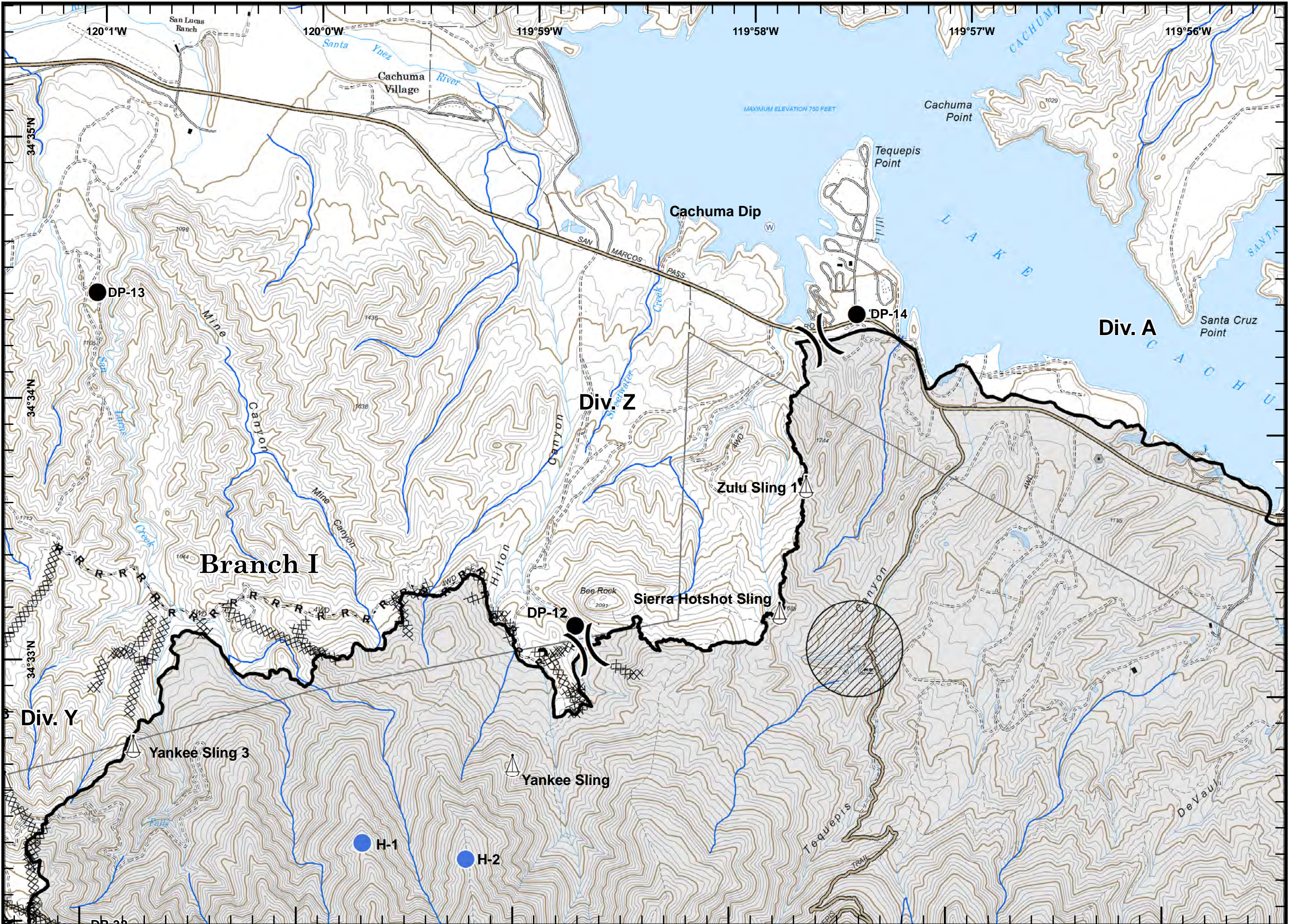


Legend:

- Branch
- Drop Point
- Helispot
- Sling Site
- Water Source
- Completed Dozer Line
- Completed Line
- R- Road as Completed Line
- Avoidance Area
- Roads



Incident Action
Plan Map

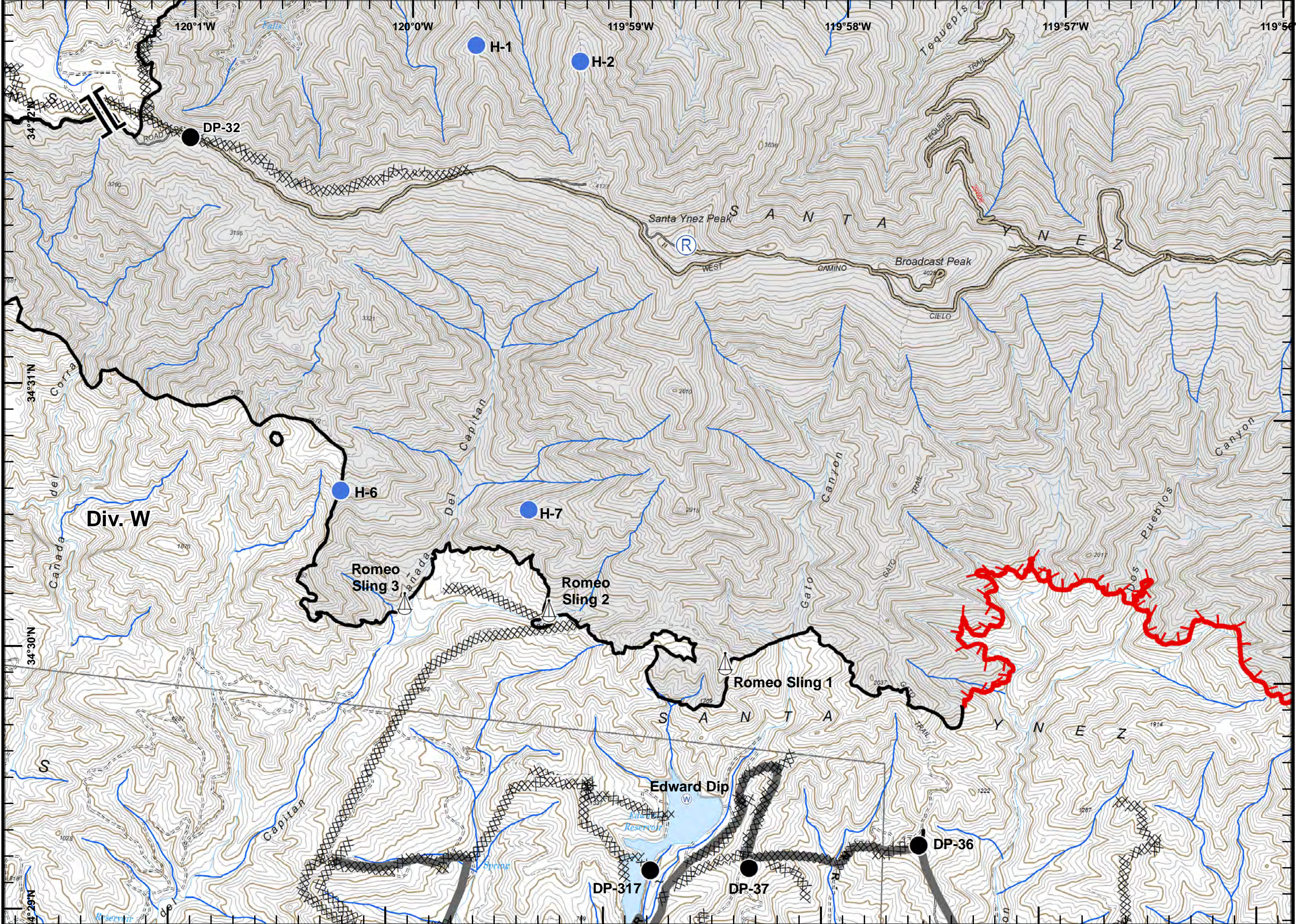


Legend for Incident Action Plan Map:

- Division
- Branch
- Drop Point
- Helispot
- Sling Site
- Water Source
- Completed Dozer Line
- Completed Line
- Road as Completed Line
- Avoidance Area
- Avoidance Area
- Roads



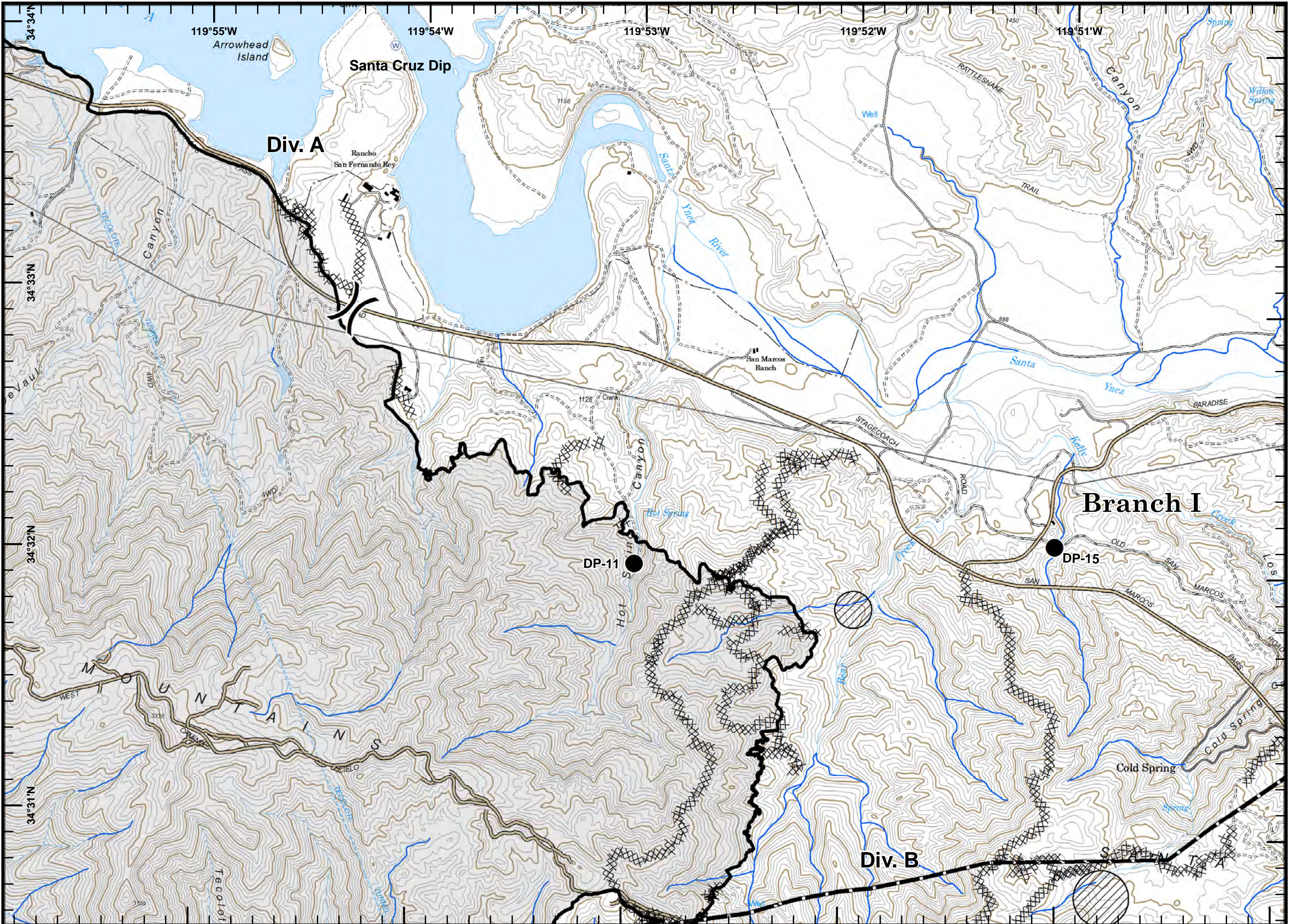
Incident Action Plan Map



- Branch
- Drop Point
- Helispot
- Repeater
- Sling Site
- Water Source
- Uncontrolled Fire Edge
- Completed Dozer Line
- Completed Line
- Road as Completed Line
- Contingency Line
- Roads



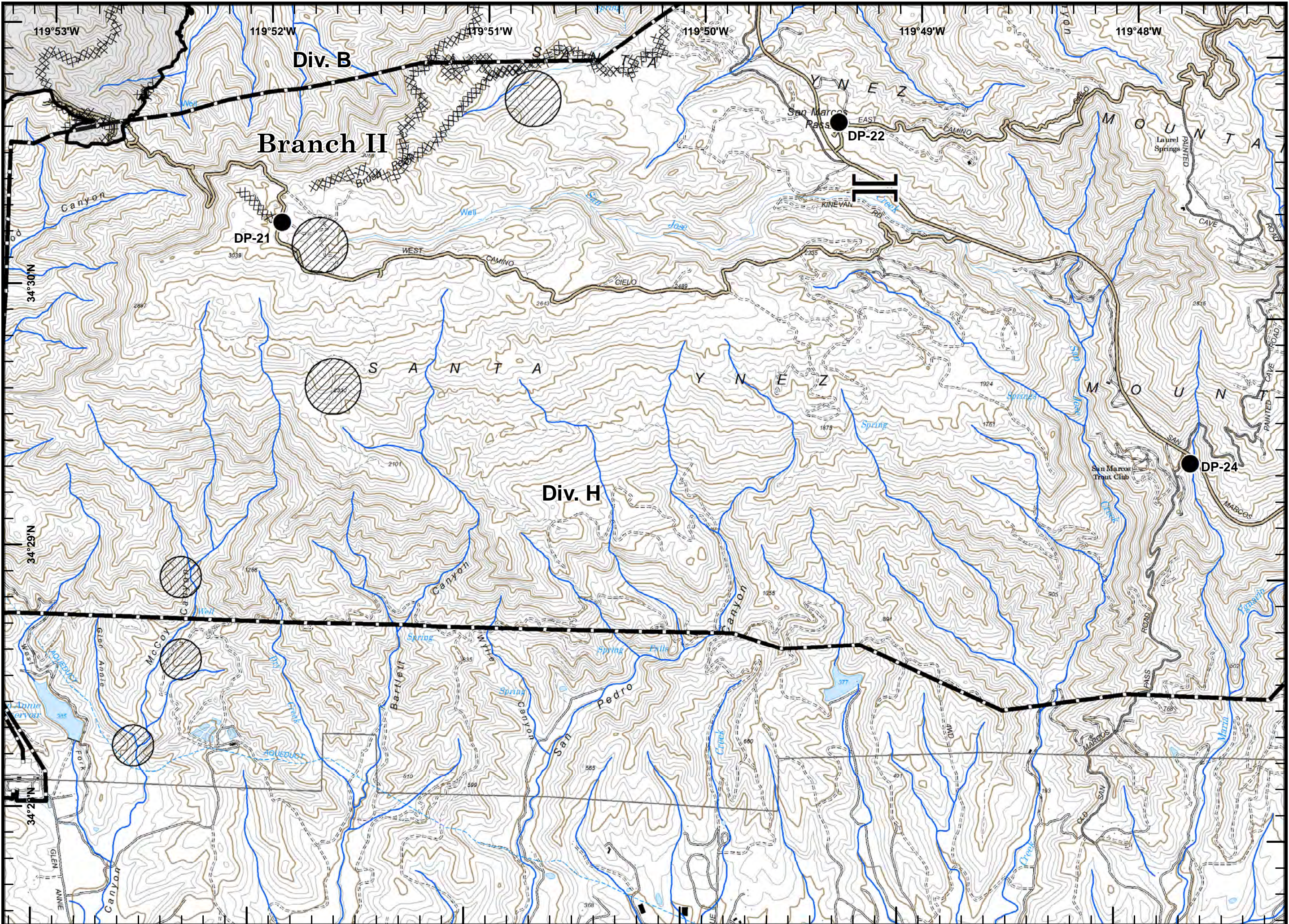
Incident Action Plan Map



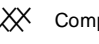

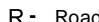

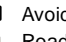
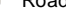


- Division
- Drop Point
- Water Source
- Completed Dozer Line
- Completed Line
- Road as Completed Line
- Transmission Line
- Avoidance Area
- Roads



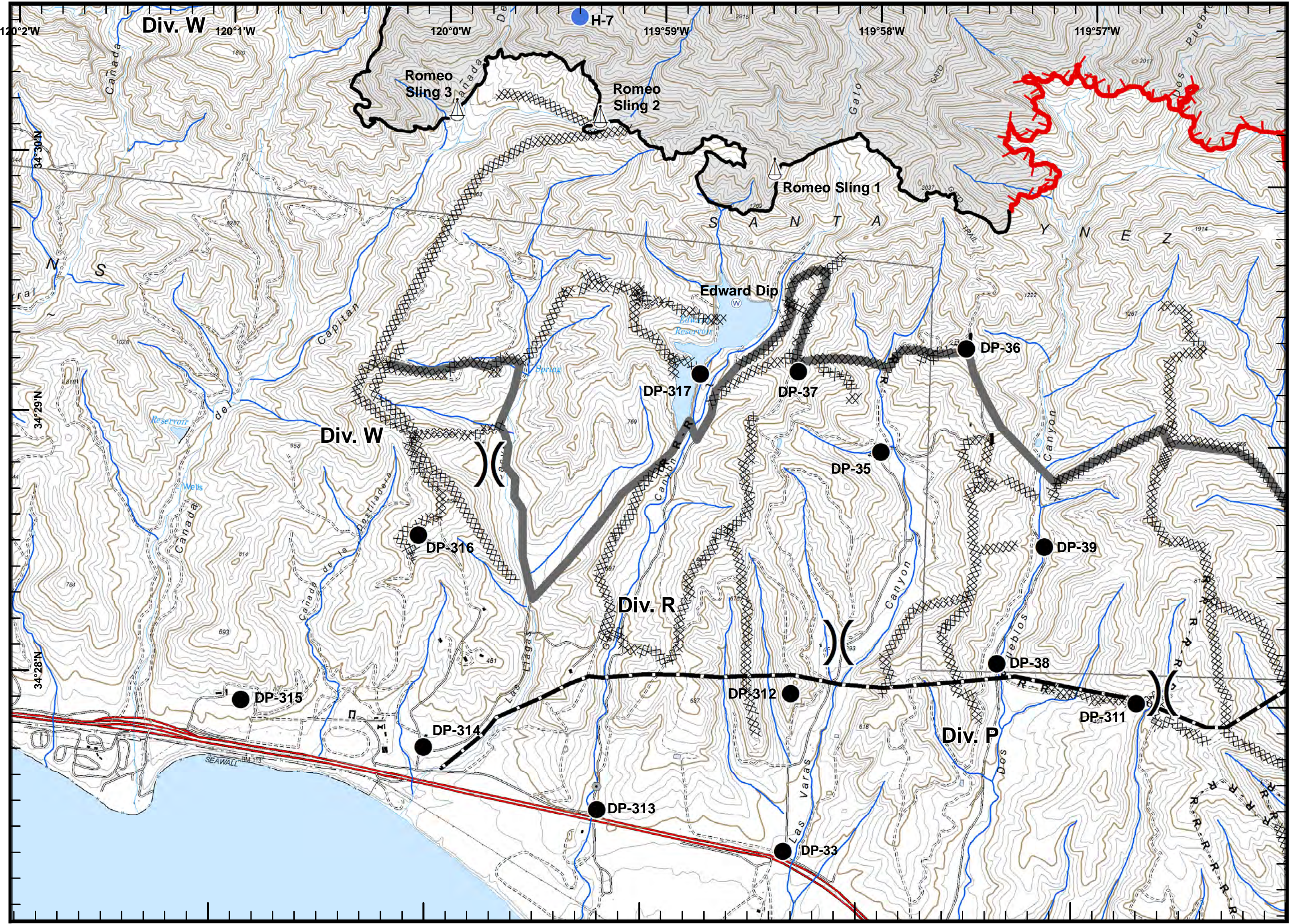
Incident Action Plan Map



-  Branch
-  Drop Point
-  Completed Dozer Line
-  Completed Line
-  R - Road as Completed Line
-  Transmission Line
-  Avoidance Area
-  Roads

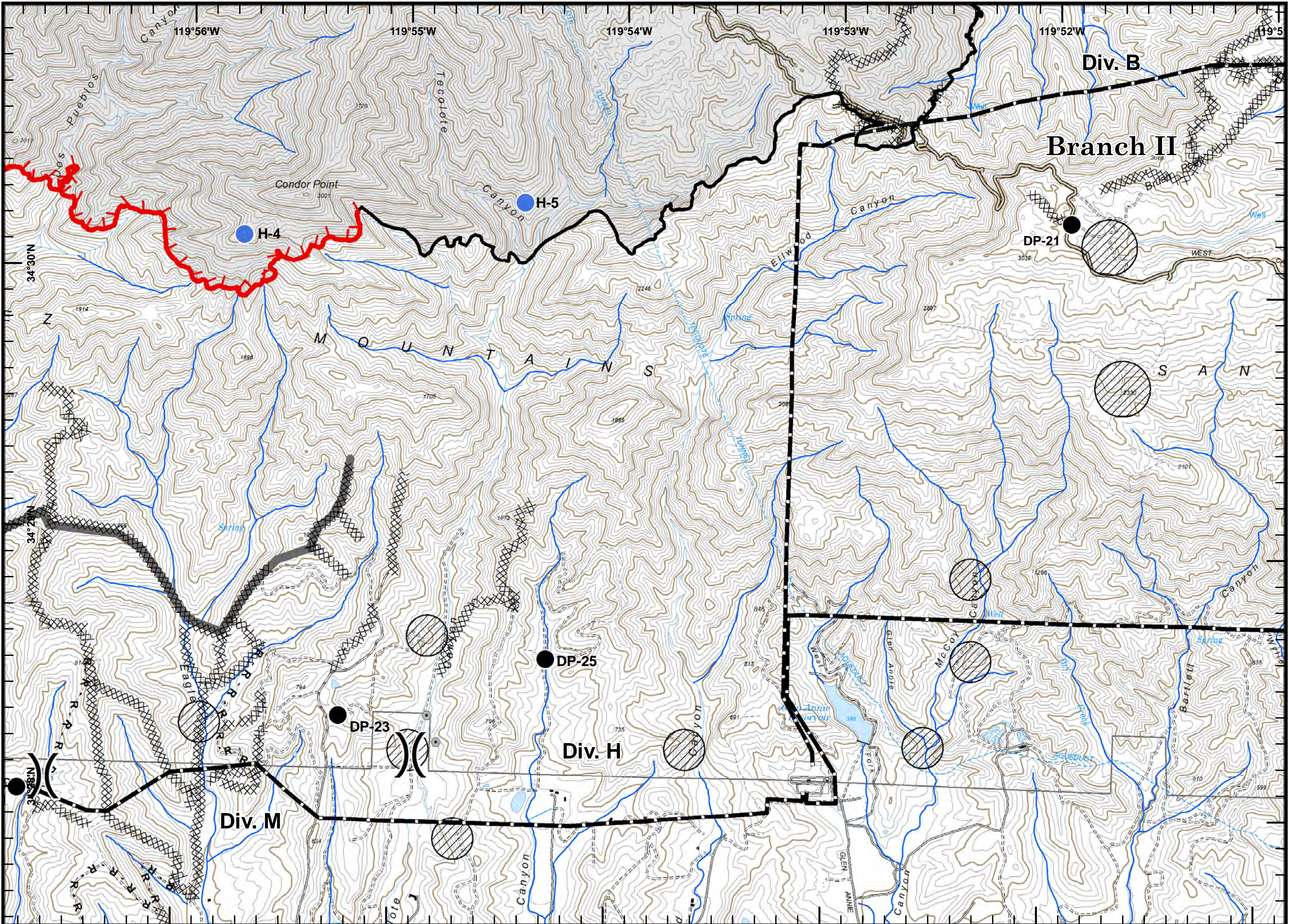


Incident Action Plan Map



- Division
- Drop Point
- Sling Site
- Water Source
- Uncontrolled Fire Edge
- Completed Dozer Line
- Completed Line
- Road as Completed Line
- Contingency Line
- Transmission Line
- Avoidance Area





Incident Action
Plan Map

- Division
- Drop Point
- Helispot
- Uncontrolled Fire Edge
- Completed Dozer Line
- Completed Line
- R- Road as Completed Line
- Contingency Line
- Transmission Line
- Avoidance Area
- Avoidance Area
- Roads



Whittier Fire CA-LBOR-001770

7/23/2017

