

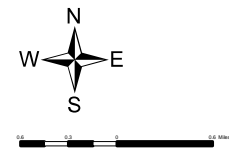
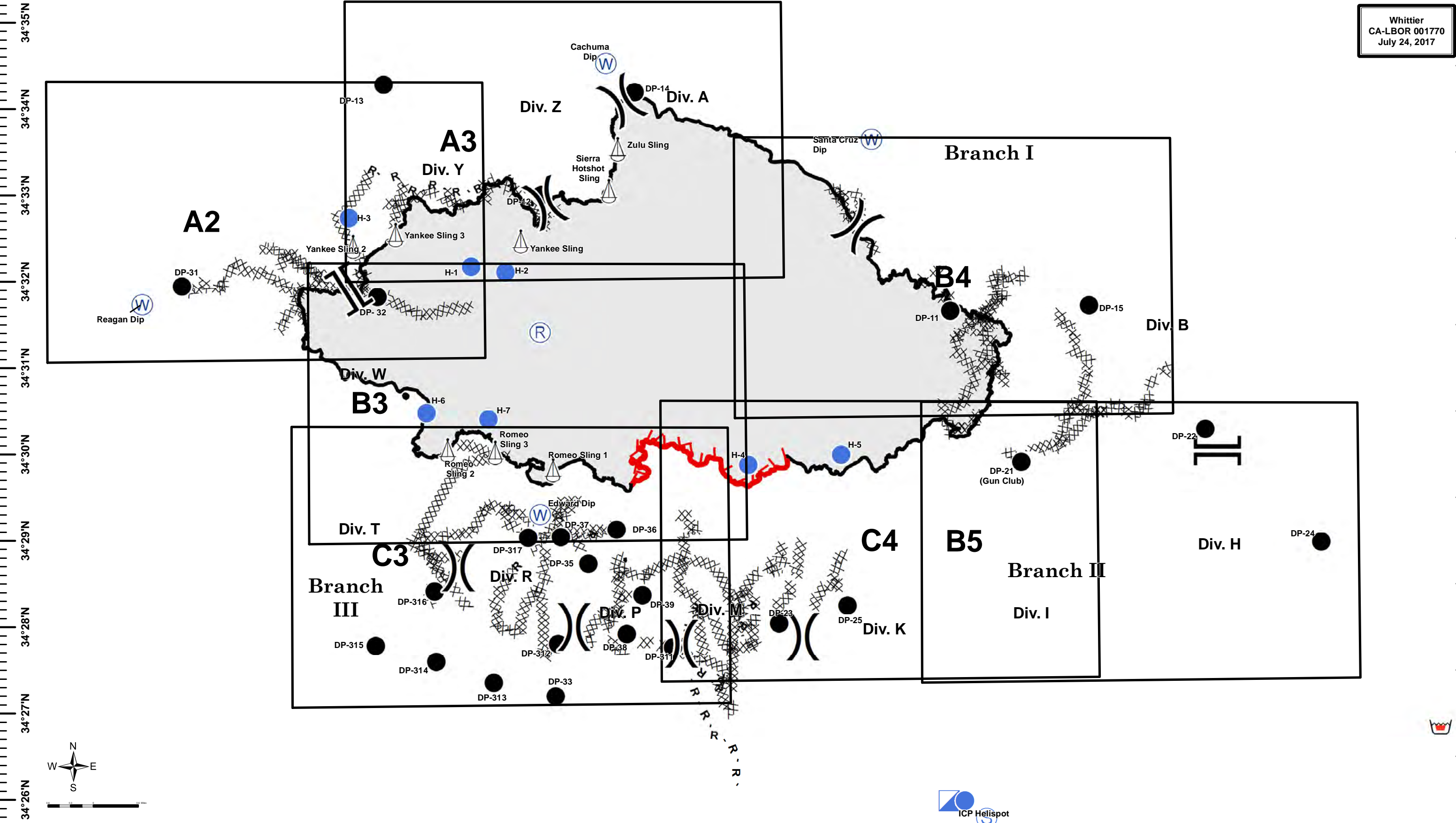
120°6'W 120°5'W 120°4'W 120°3'W 120°2'W 120°1'W 120°0'W 119°59'W 119°58'W 119°57'W 119°56'W 119°55'W 119°54'W 119°53'W 119°52'W 119°51'W 119°50'W 119°49'W 119°48'W



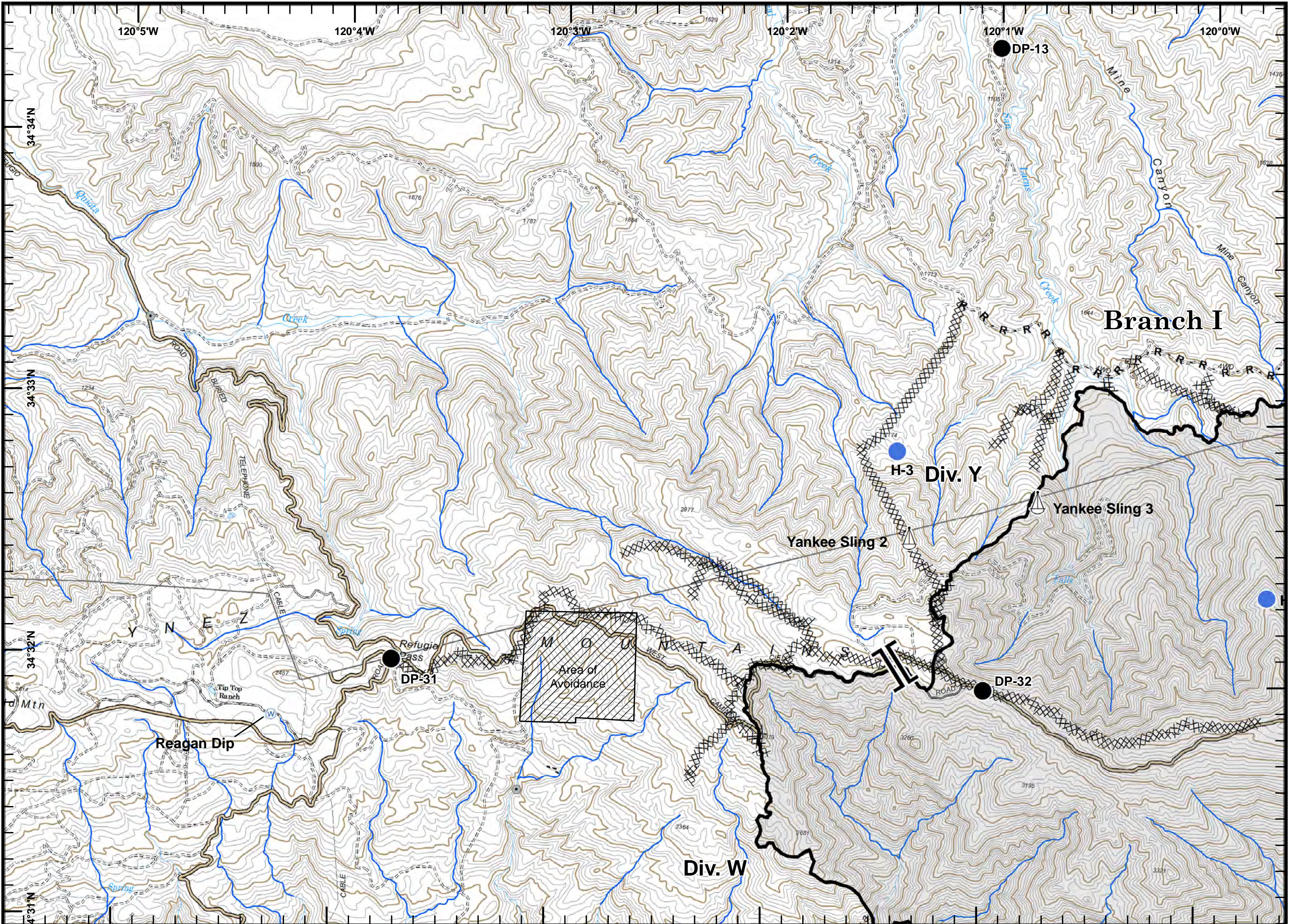
# Page Grid Index Map



Whittier  
CA-LBOR 001770  
July 24, 2017



Incident Action  
Plan Map

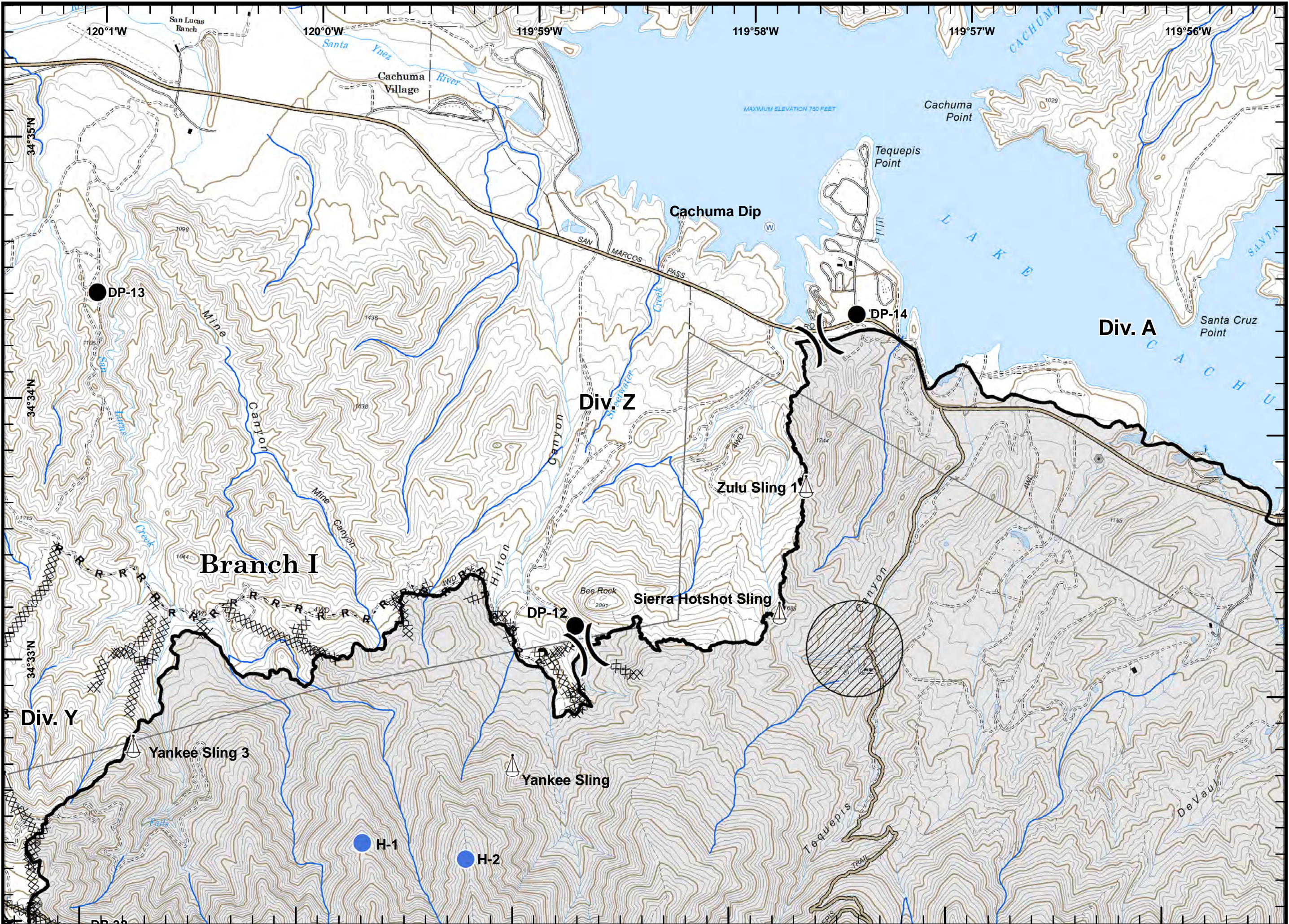


Legend:

- Branch
- Drop Point
- Helispot
- Sling Site
- Water Source
- Completed Dozer Line
- Completed Line
- R- Road as Completed Line
- Avoidance Area
- Roads



Incident Action  
Plan Map

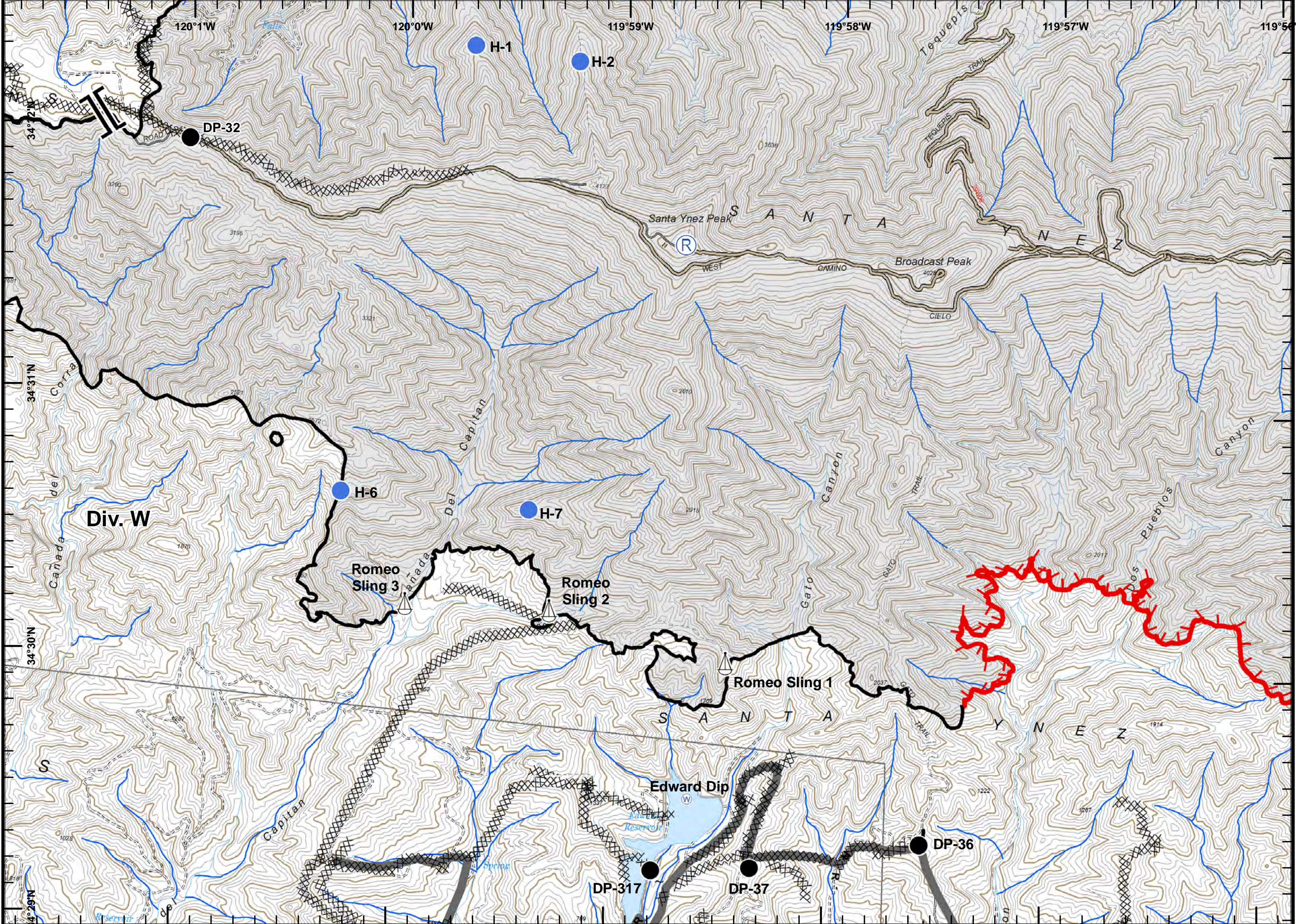








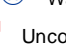
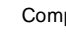

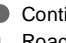
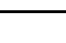

Legend for Incident Action Plan Map:

- Division: ) (
- Branch: ] [
- Drop Point: ●
- Helispot: ● (blue)
- Sling Site: ▲
- Water Source: W (in circle)
- Completed Dozer Line: X X
- Completed Line: — (thick)
- Road as Completed Line: R -
- Avoidance Area: [hatched]
- Avoidance Area: [dotted]
- Roads: — (thin)



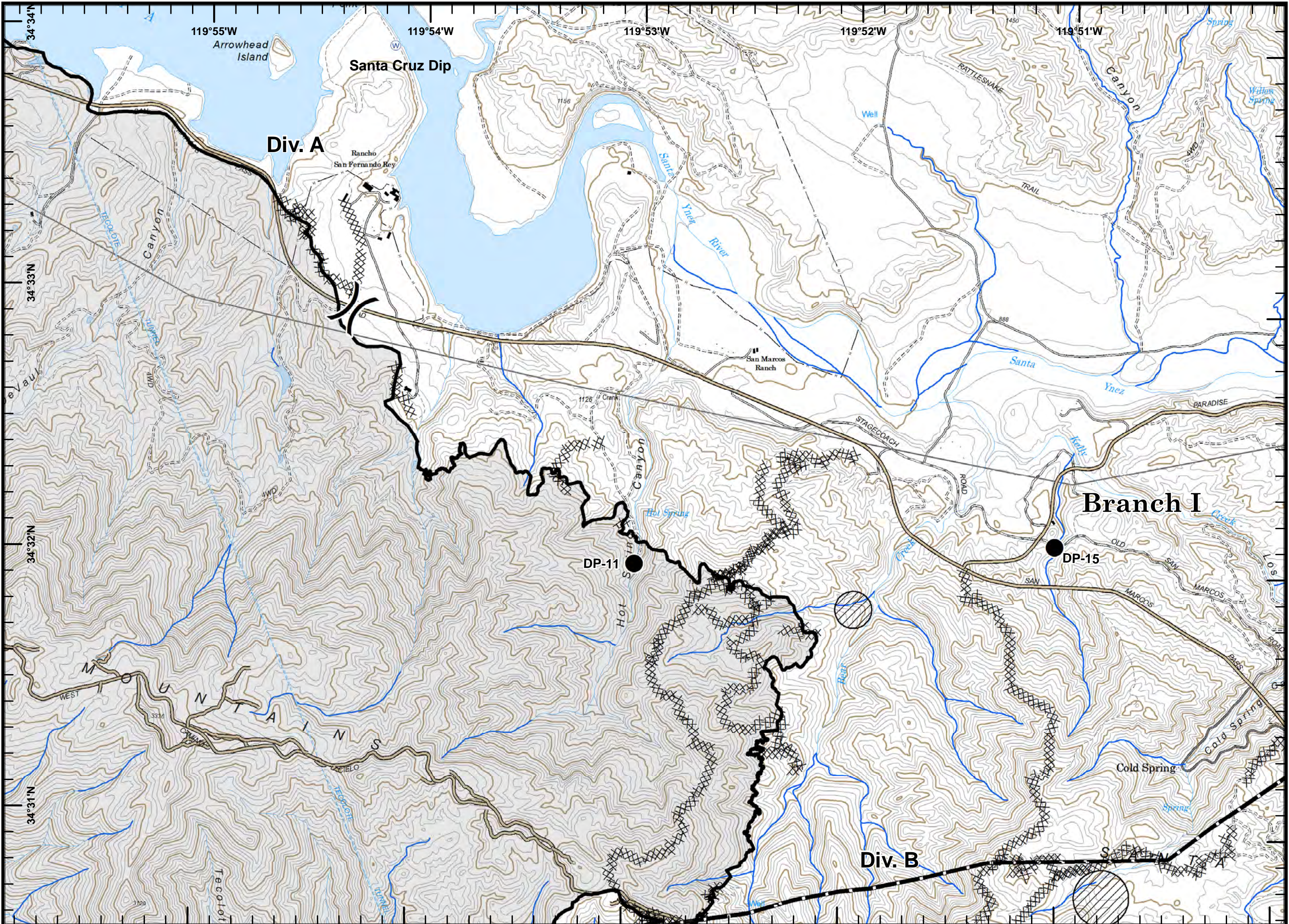
### Incident Action Plan Map



-  Branch
-  Drop Point
-  Helispot
-  Repeater
-  Sling Site
-  Water Source
-  Uncontrolled Fire Edge
-  Completed Dozer Line
-  Completed Line
-  Road as Completed Line
-  Contingency Line
-  Roads



### Incident Action Plan Map

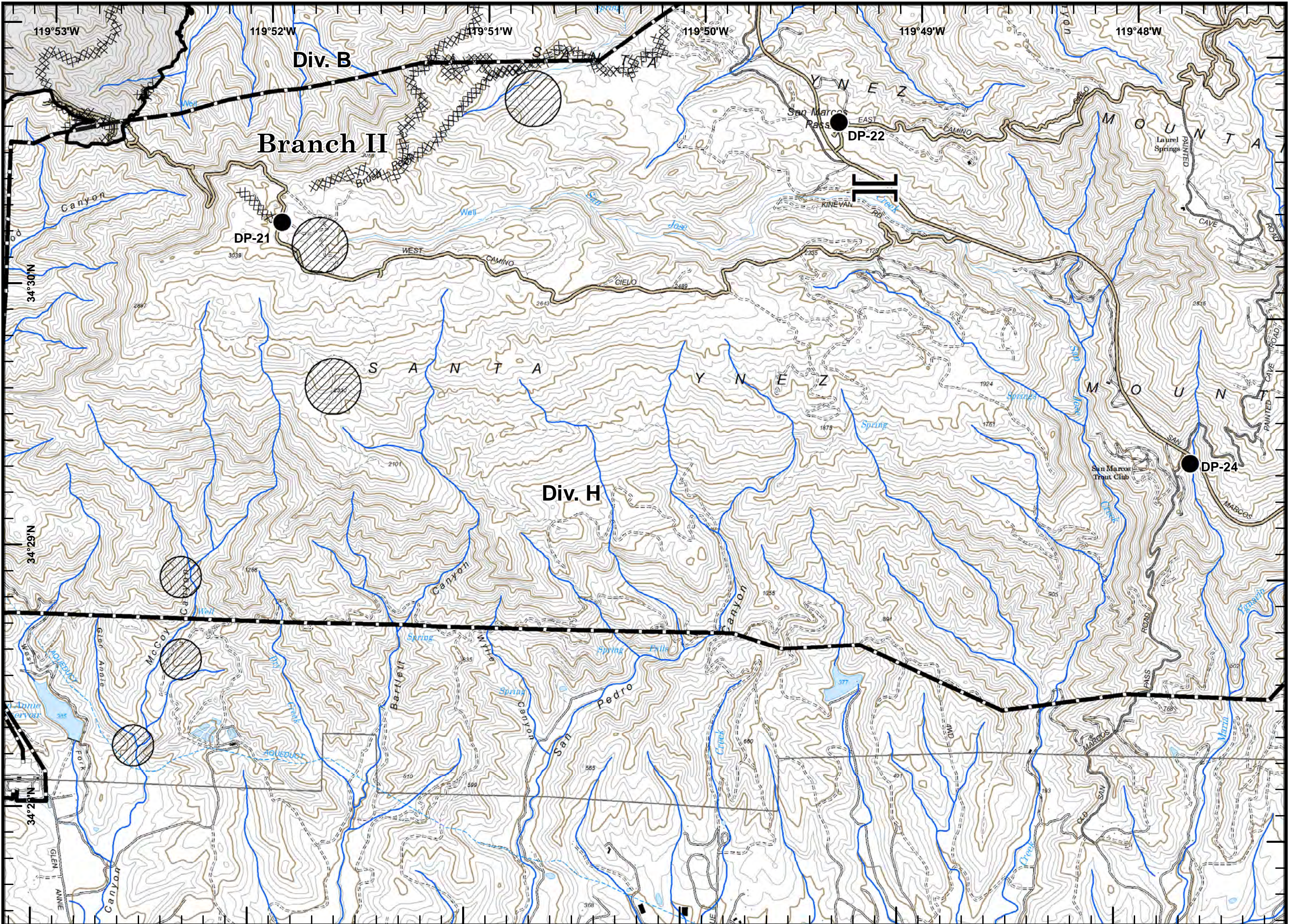




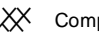

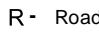

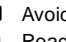
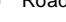
**Legend**

- Division
- Drop Point
- Water Source
- Completed Dozer Line
- Completed Line
- Road as Completed Line
- Transmission Line
- Avoidance Area
- Roads



### Incident Action Plan Map

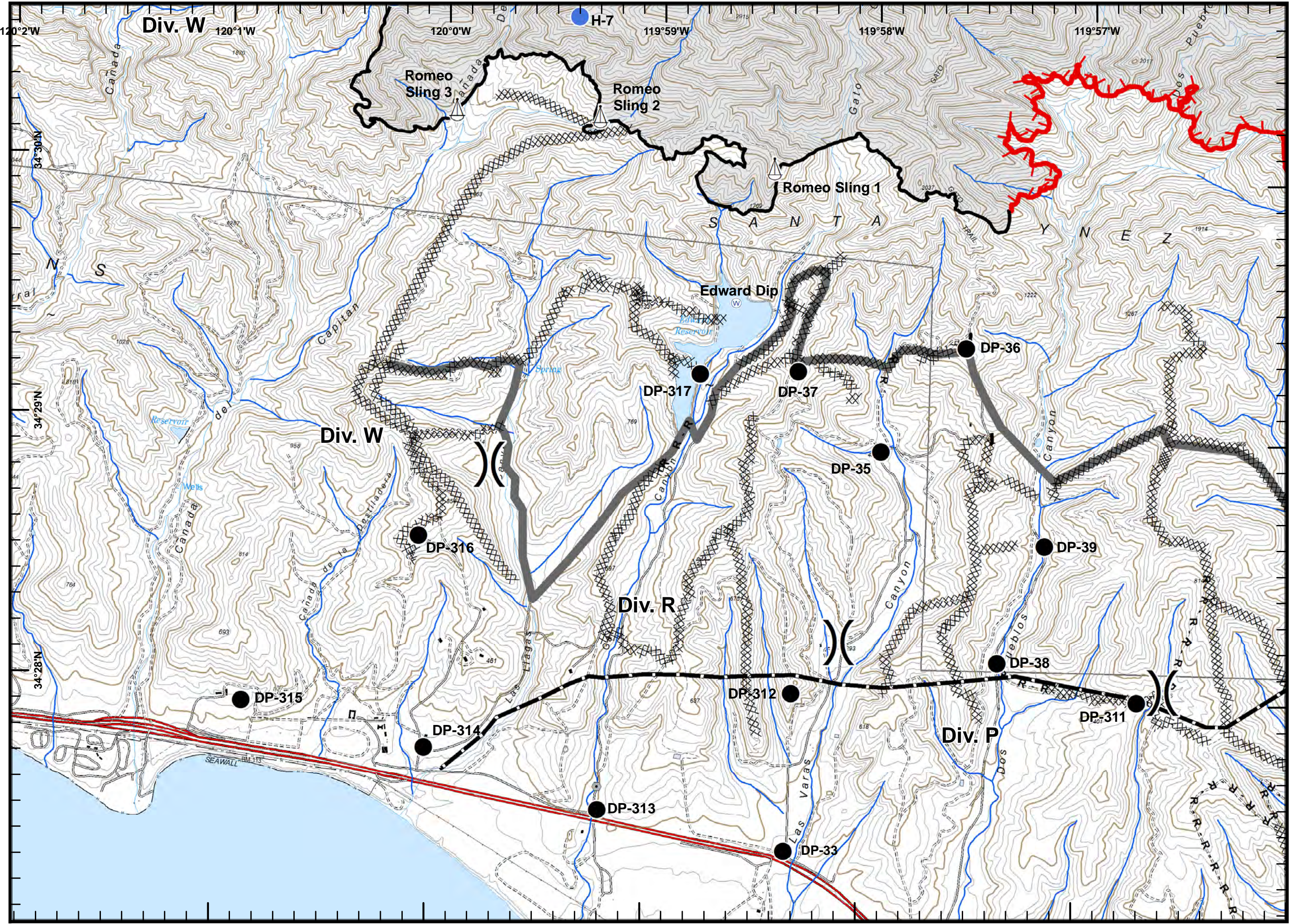


-  Branch
-  Drop Point
-  Completed Dozer Line
-  Completed Line
-  R - Road as Completed Line
-  Transmission Line
-  Avoidance Area
-  Roads

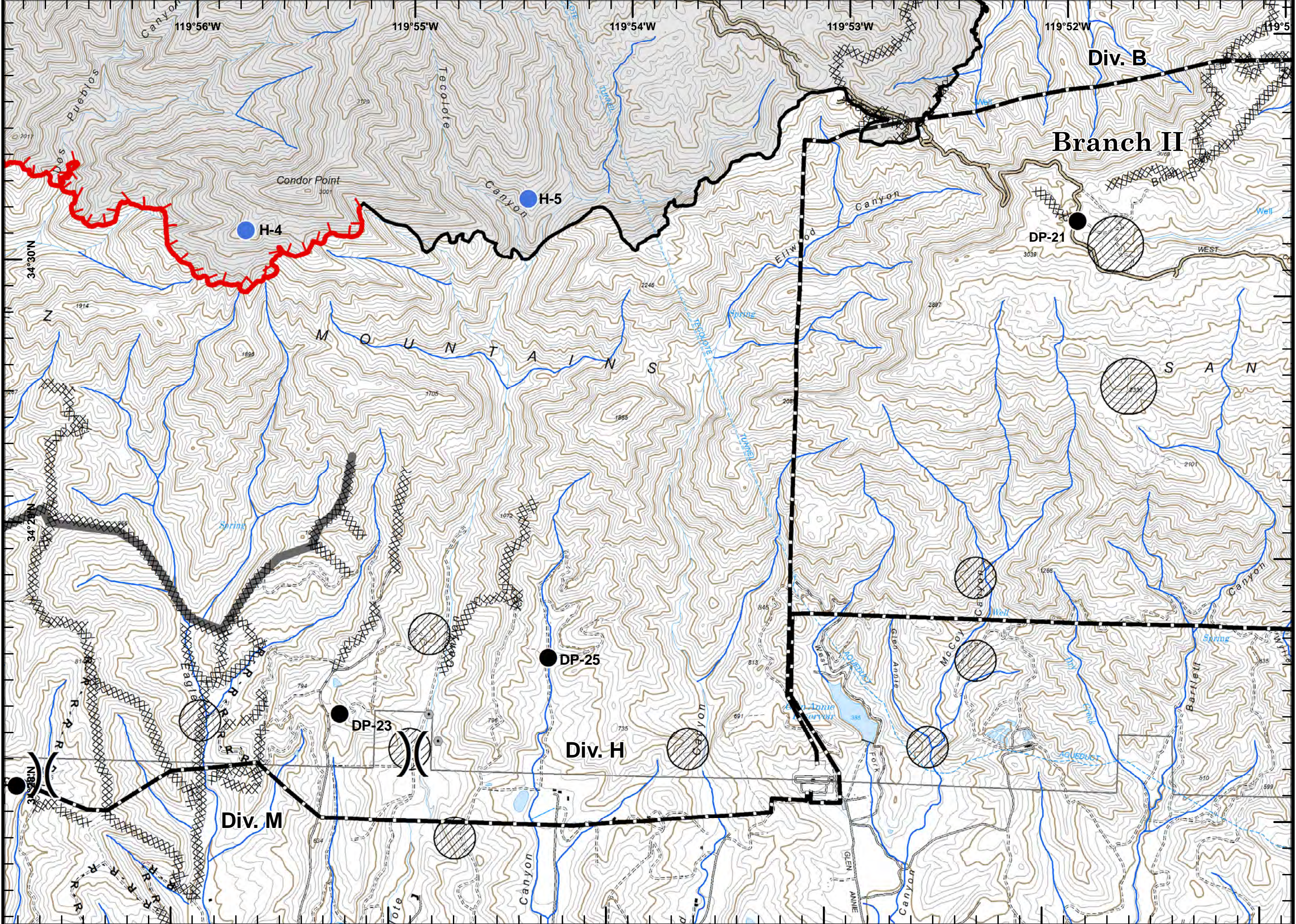


### Incident Action Plan Map

- Division
- Drop Point
- Sling Site
- Water Source
- Uncontrolled Fire Edge
- Completed Dozer Line
- Completed Line
- R - Road as Completed Line
- Contingency Line
- Transmission Line
- Avoidance Area



Incident Action  
Plan Map



- Division
- Drop Point
- Helispot
- Uncontrolled Fire Edge
- Completed Dozer Line
- Completed Line
- R- Road as Completed Line
- Contingency Line
- Transmission Line
- Avoidance Area
- Avoidance Area
- Roads





# Whittier Fire CA-LBOR-001770

7/24/2017

