

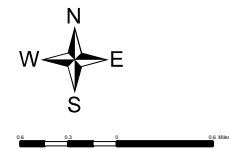
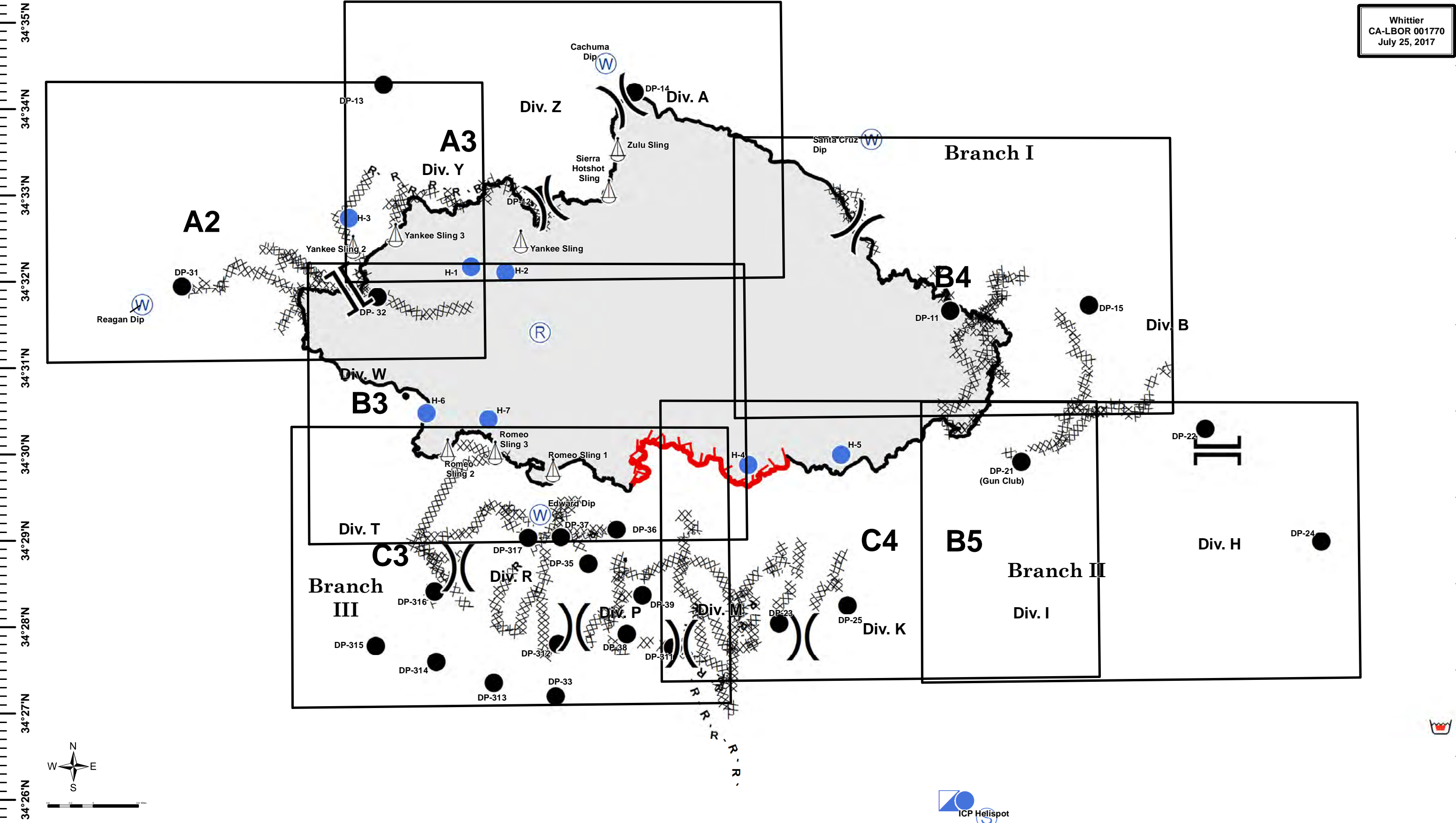
120°6'W 120°5'W 120°4'W 120°3'W 120°2'W 120°1'W 120°0'W 119°59'W 119°58'W 119°57'W 119°56'W 119°55'W 119°54'W 119°53'W 119°52'W 119°51'W 119°50'W 119°49'W 119°48'W



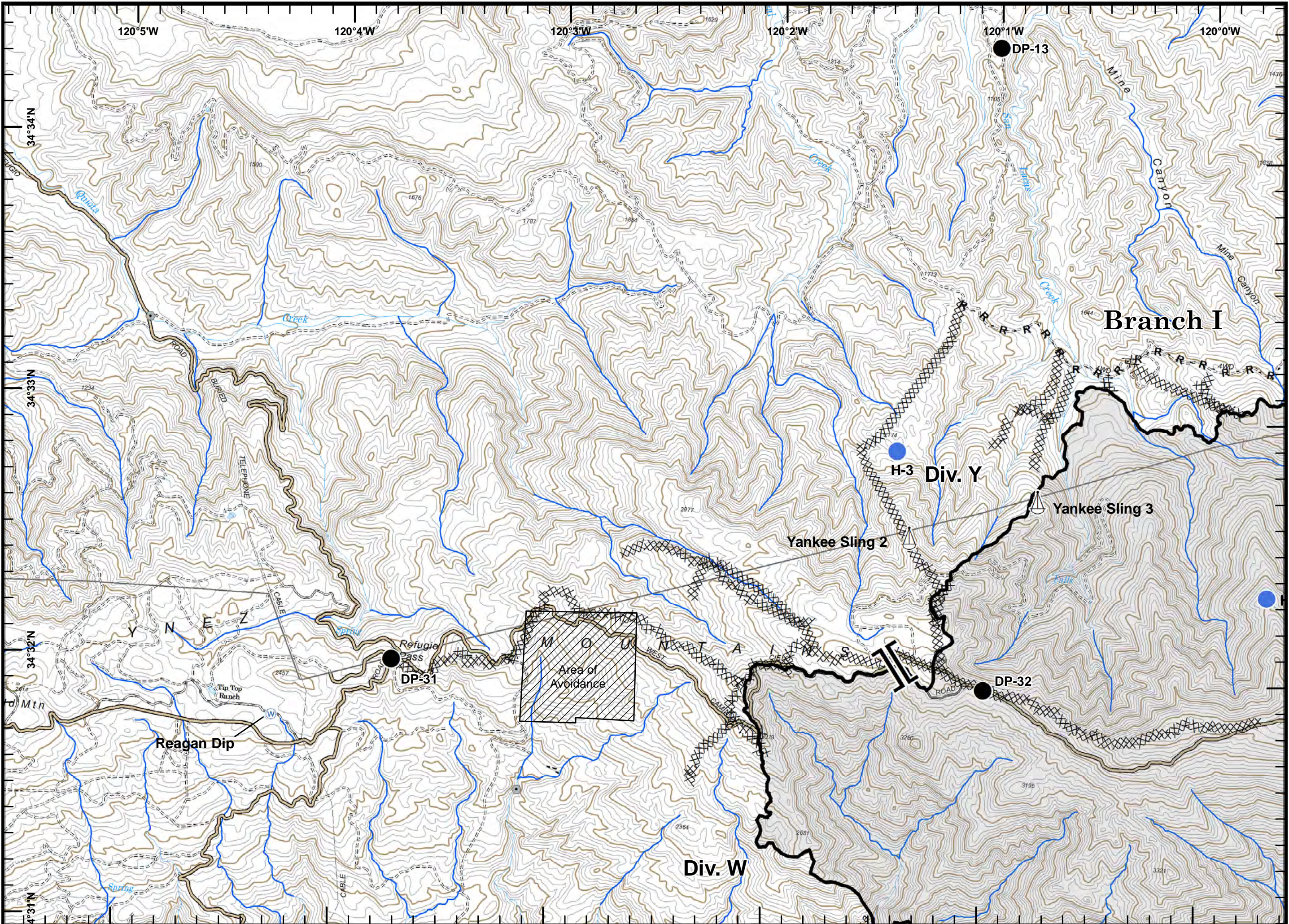
Page Grid Index Map



Whittier
CA-LBOR 001770
July 25, 2017



Incident Action
Plan Map

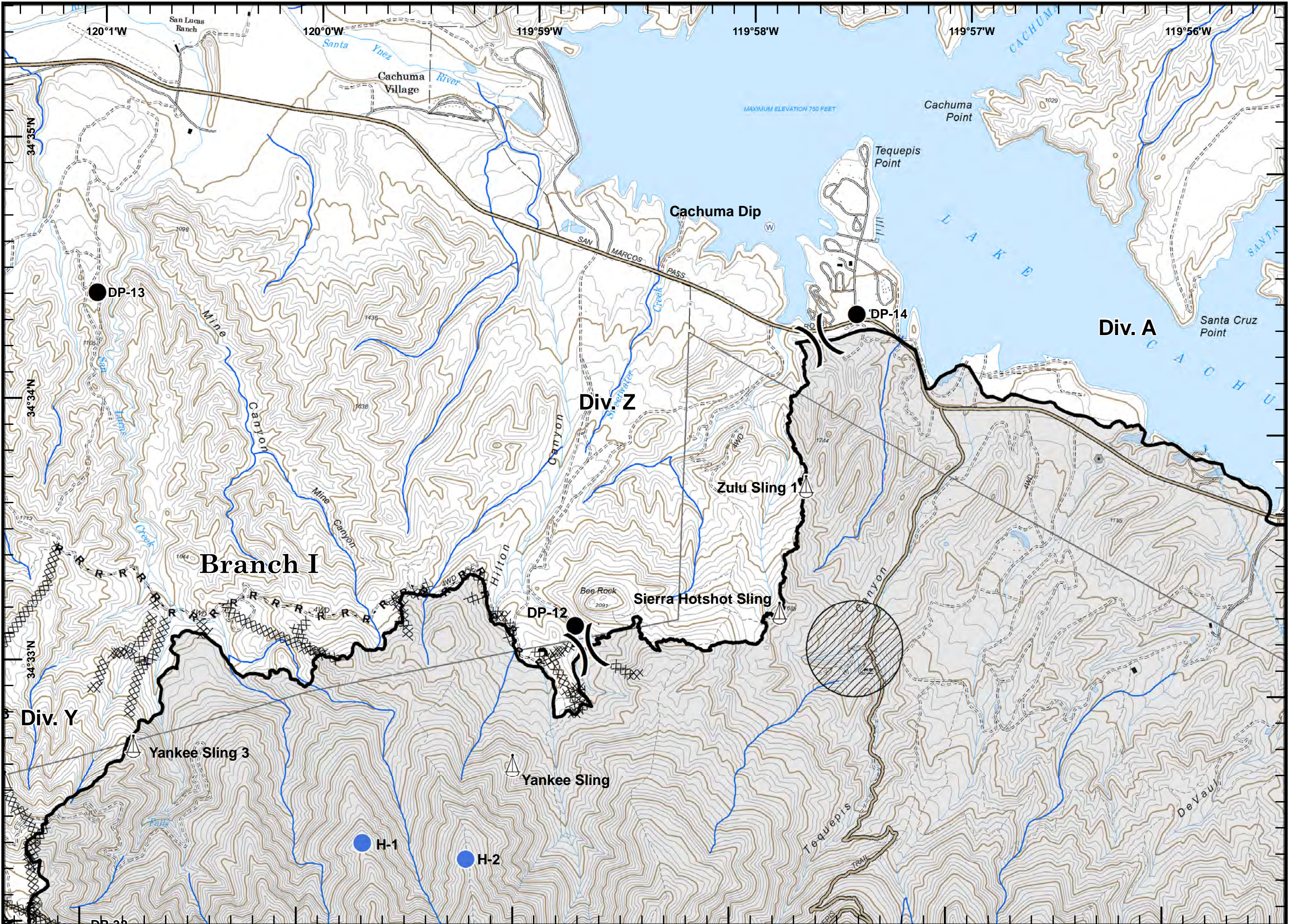


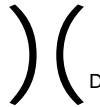





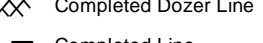
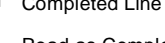
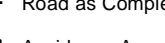
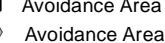
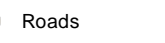
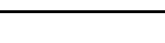
Legend:

- Branch
- Drop Point
- Helispot
- Sling Site
- Water Source
- Completed Dozer Line
- Completed Line
- R - Road as Completed Line
- Avoidance Area
- Roads



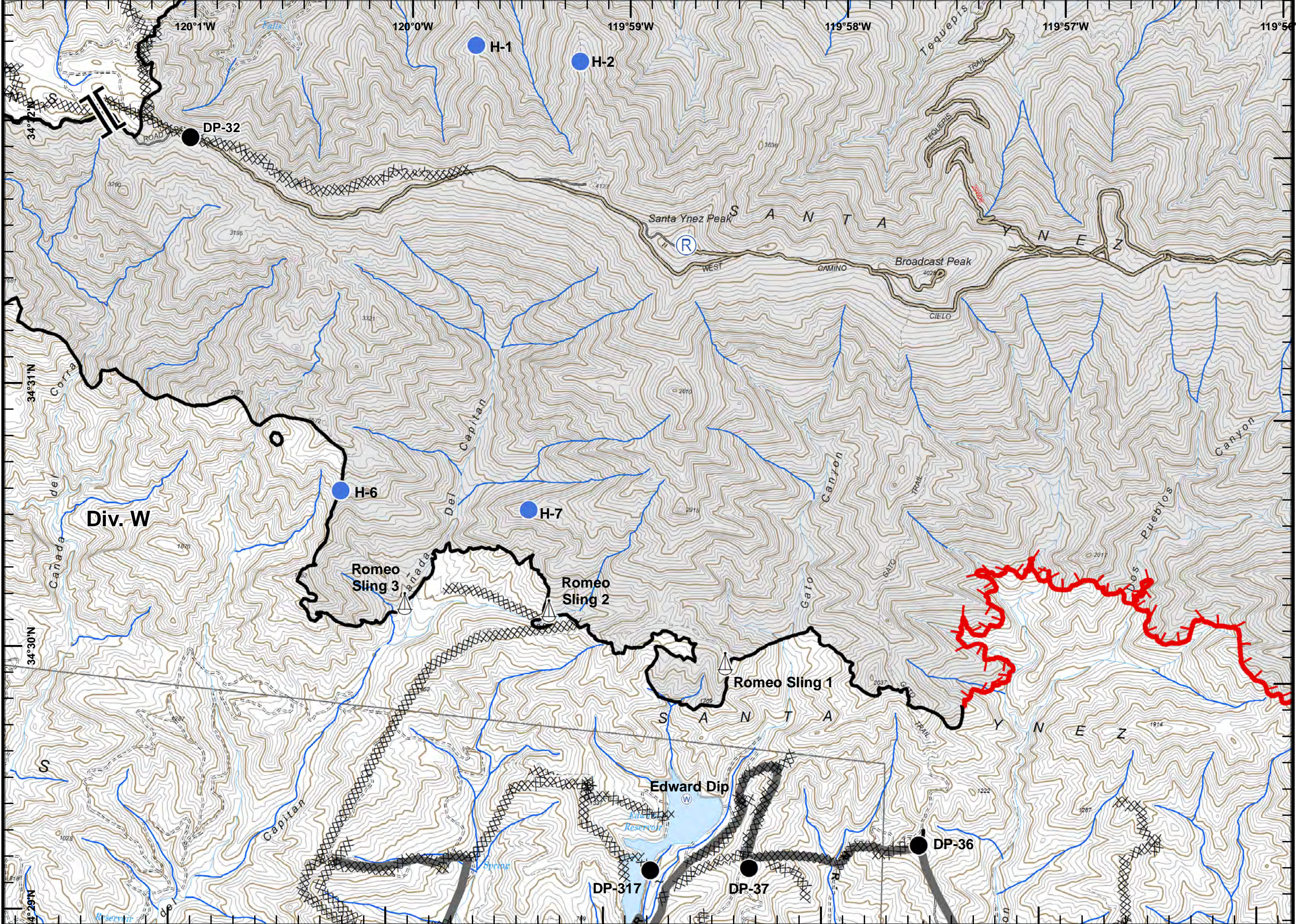
Incident Action Plan Map



-  Division
-  Branch
-  Drop Point
-  Helispot
-  Sling Site
-  Water Source
-  Completed Dozer Line
-  Completed Line
-  Road as Completed Line
-  Avoidance Area
-  Avoidance Area
-  Roads



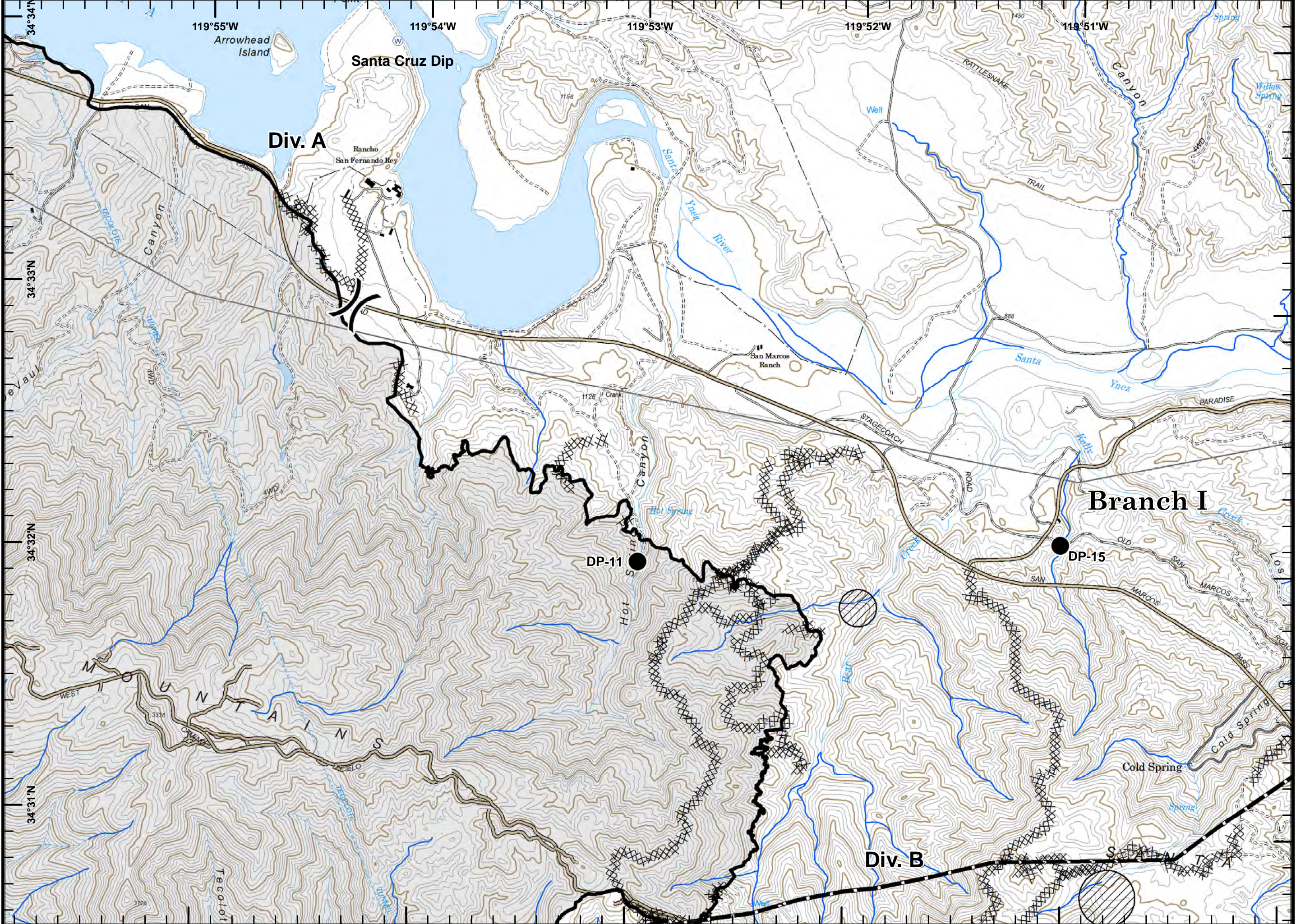
Incident Action Plan Map



- Branch
- Drop Point
- Helispot
- Repeater
- Sling Site
- Water Source
- Uncontrolled Fire Edge
- Completed Dozer Line
- Completed Line
- Road as Completed Line
- Contingency Line
- Roads



Incident Action Plan Map



) (Division

● Drop Point

W Water Source

X Completed Dozer Line

— Completed Line

R- Road as Completed Line

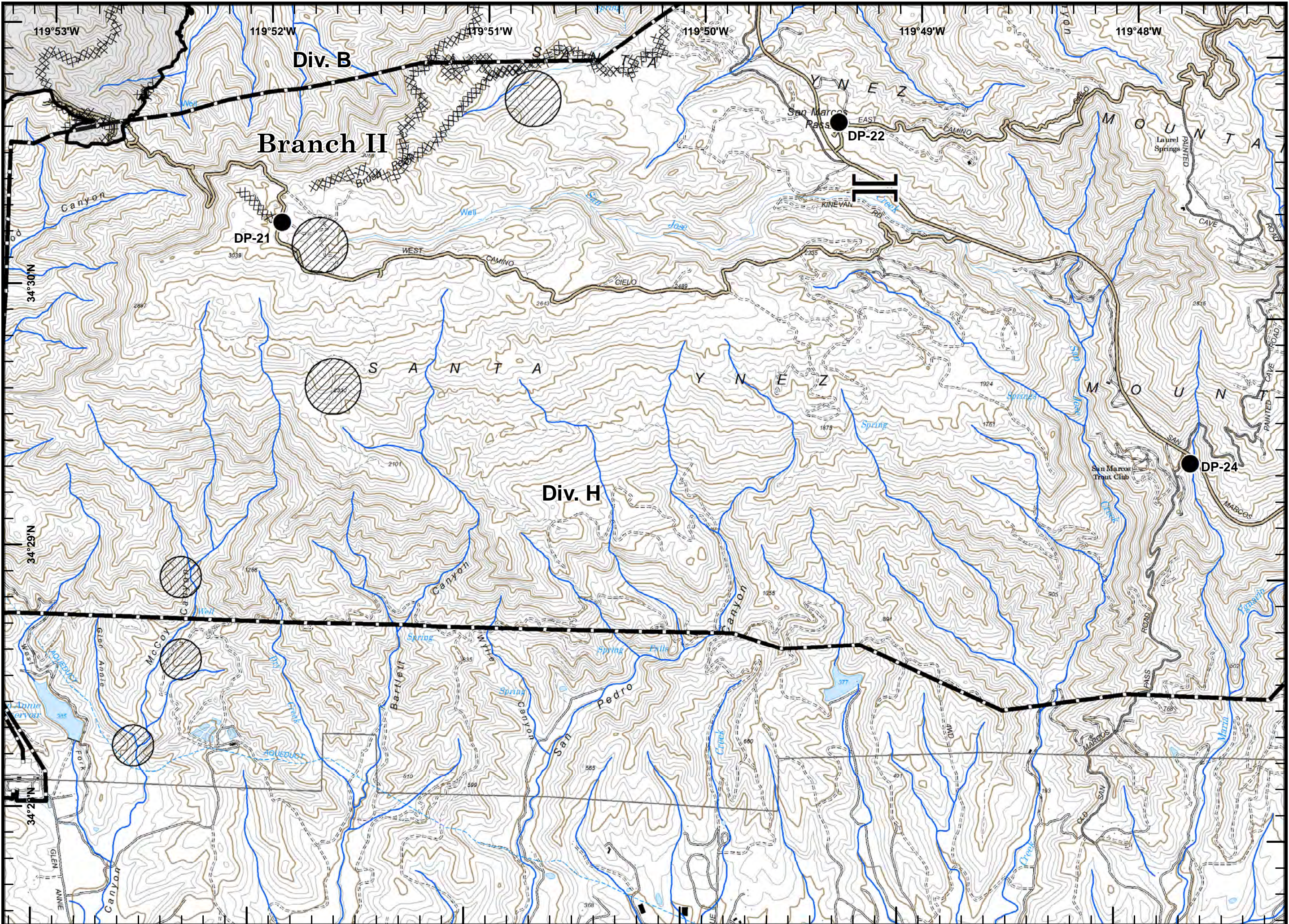
■ Transmission Line

□ Avoidance Area

— Roads



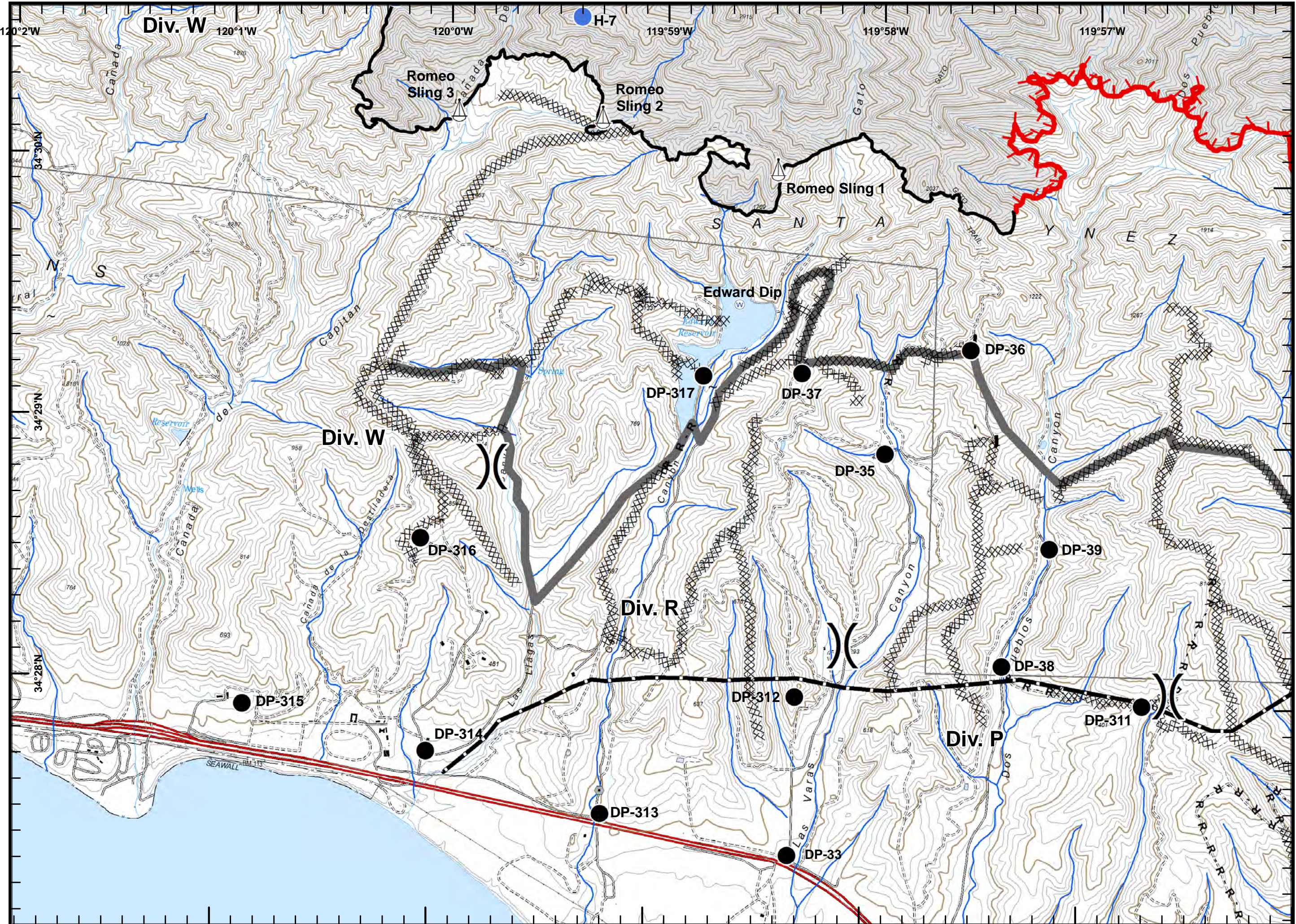
Incident Action Plan Map



- Branch
- Drop Point
- Completed Dozer Line
- Completed Line
- Road as Completed Line
- Transmission Line
- Avoidance Area
- Roads

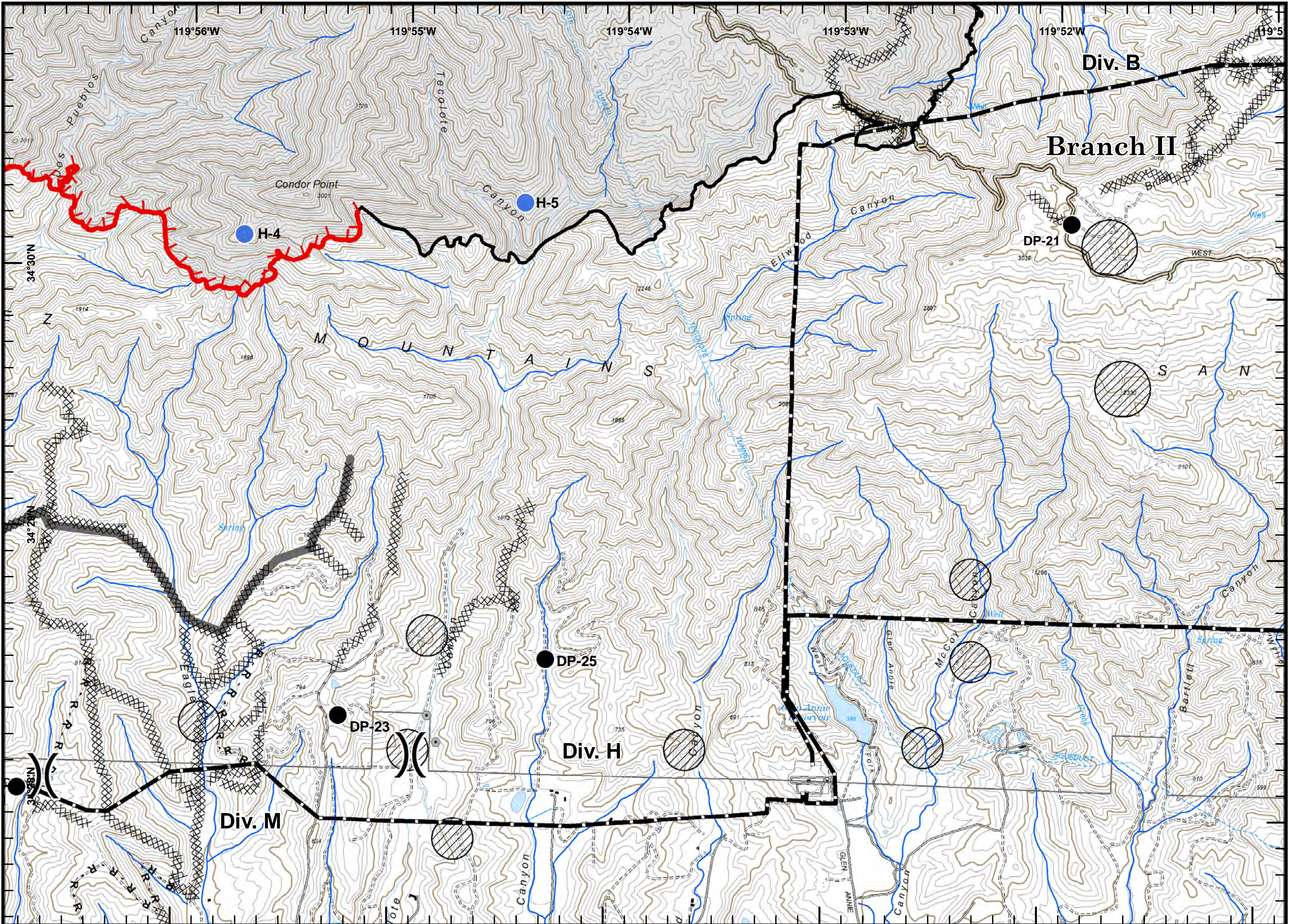


Incident Action Plan Map



- Division
- Drop Point
- Sling Site
- Water Source
- Uncontrolled Fire Edge
- Completed Dozer Line
- Completed Line
- Road as Completed Line
- Contingency Line
- Transmission Line
- Avoidance Area





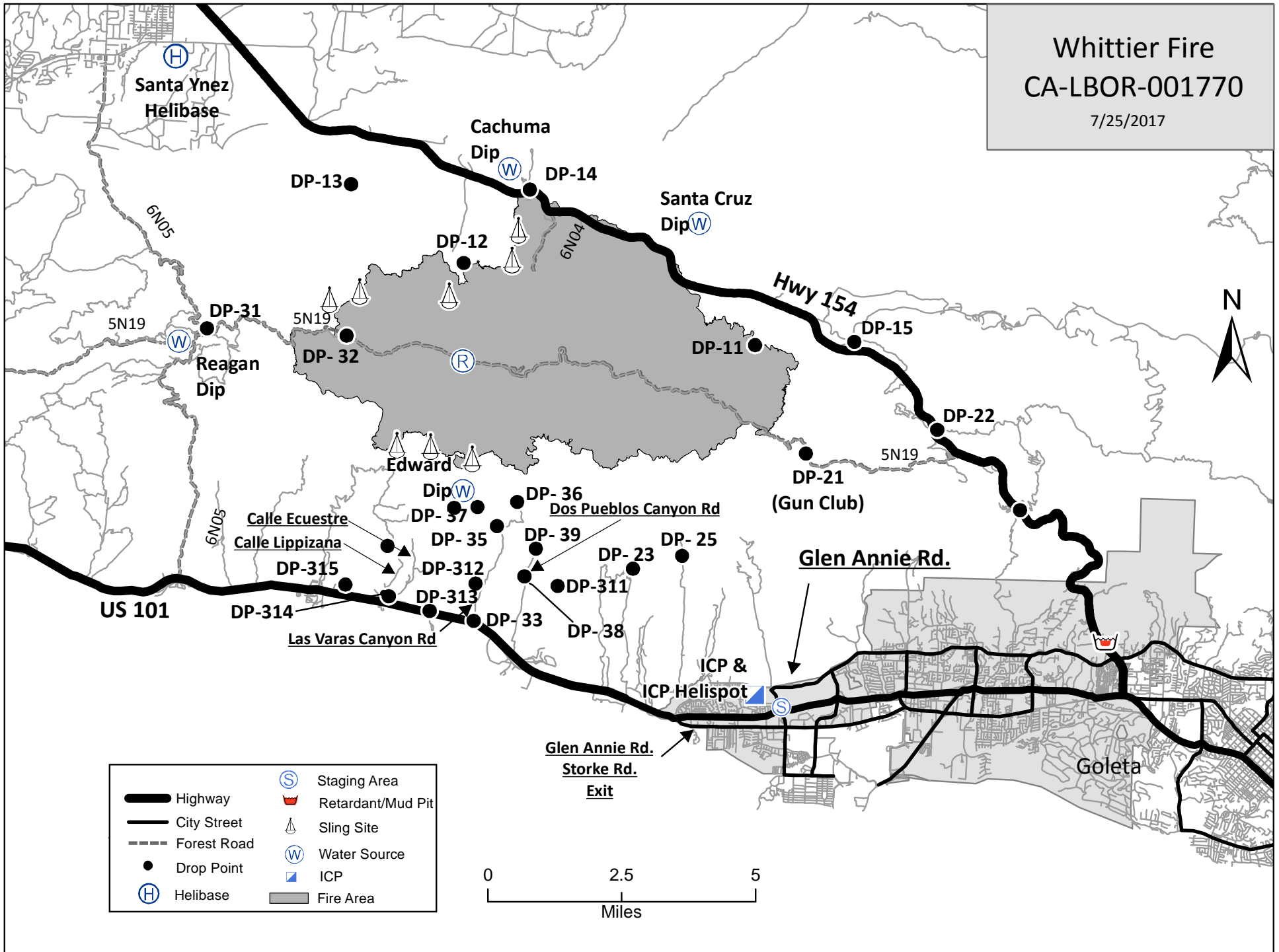
Incident Action Plan Map

- Division
- Drop Point
- Helispot
- Uncontrolled Fire Edge
- Completed Dozer Line
- Completed Line
- Road as Completed Line
- Contingency Line
- Transmission Line
- Avoidance Area
- Avoidance Area
- Roads



Whittier Fire CA-LBOR-001770

7/25/2017



Highway	Staging Area
City Street	Retardant/Mud Pit
Forest Road	Sling Site
Drop Point	Water Source
Helibase	ICP
Fire Area	

