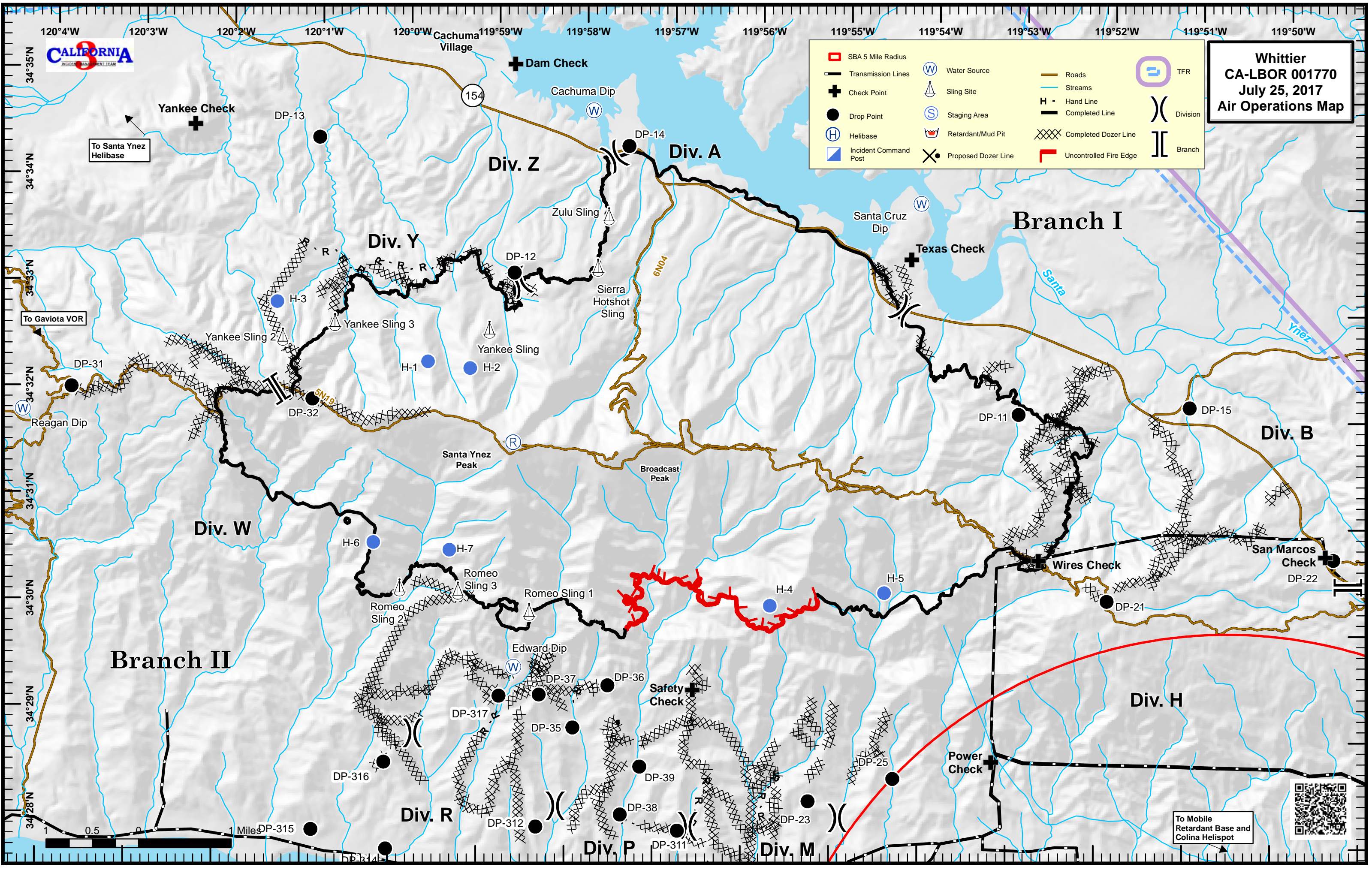


120°4'W 120°3'W 120°2'W 120°1'W 120°0'W Cachuma Village 119°59'W 119°58'W 119°57'W 119°56'W 119°55'W 119°54'W 119°53'W 119°52'W 119°51'W 119°50'W



**Whittier**  
**CA-LBOR 001770**  
**July 25, 2017**  
**Air Operations Map**

SBA 5 Mile Radius	Water Source	Roads	TFR
Transmission Lines	Sling Site	Streams	Hand Line
Check Point	Staging Area	Completed Line	Division
Drop Point	Retardant/Mud Pit	Completed Dozer Line	Branch
Helibase	Proposed Dozer Line	Uncontrolled Fire Edge	
Incident Command Post			



To Santa Ynez Helibase

To Gaviota VOR

To Mobile Retardant Base and Colina Helispot



1 0.5 0 1 Miles

34°35'N 34°34'N 34°33'N 34°32'N 34°31'N 34°30'N 34°29'N 34°28'N