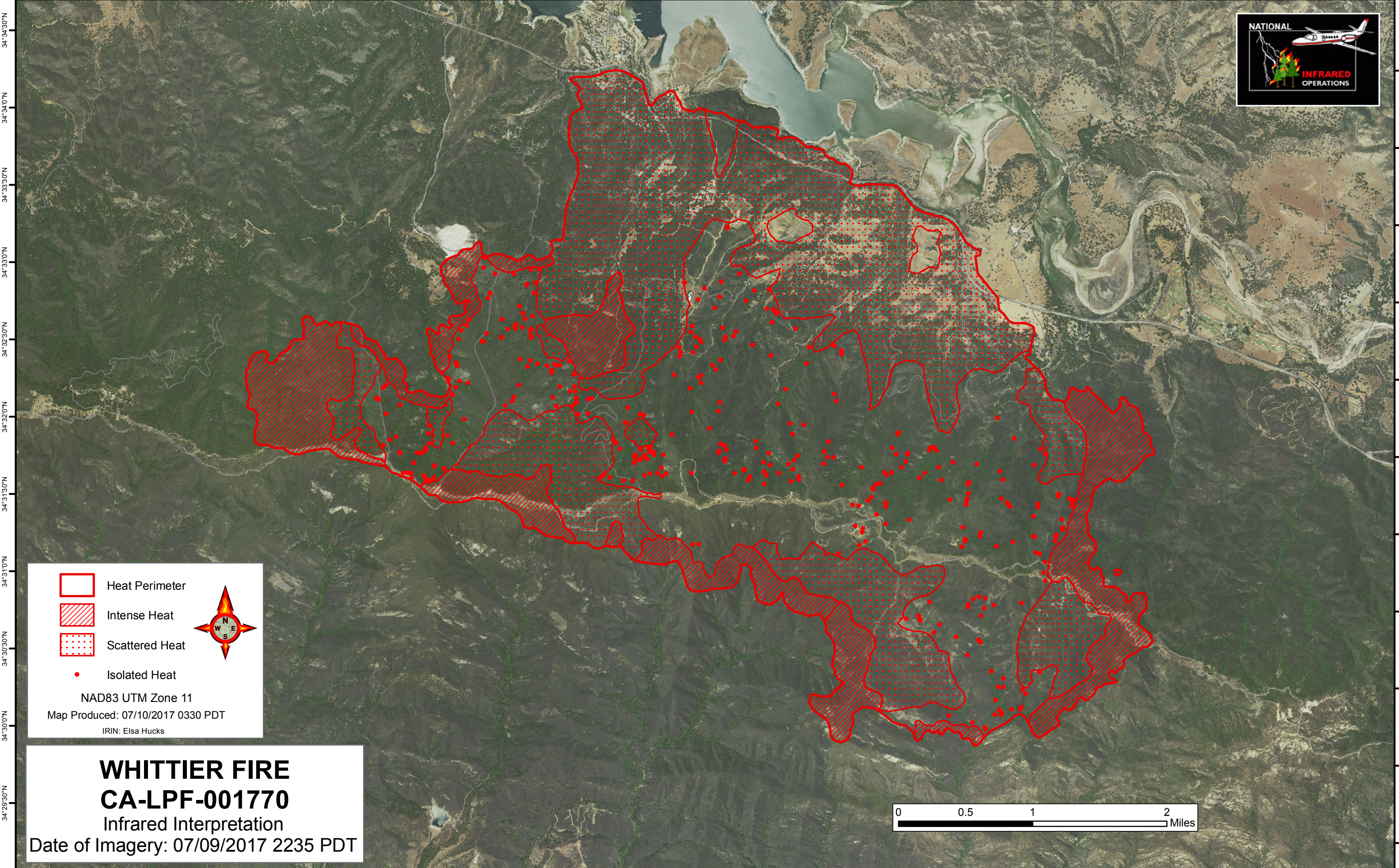
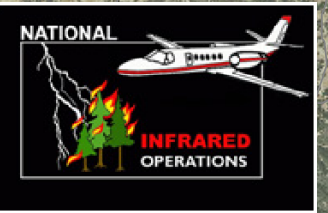






120°20'W 120°1'30"W 120°1'0"W 120°0'30"W 120°0'0"W 119°59'30"W 119°59'0"W 119°58'30"W 119°58'0"W 119°57'30"W 119°57'0"W 119°56'30"W 119°56'0"W 119°55'30"W 119°55'0"W 119°54'30"W 119°54'0"W 119°53'30"W 119°53'0"W 119°52'30"W 119°52'0"W 119°51'30"W

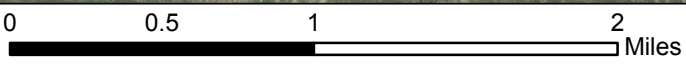


-  Heat Perimeter
-  Intense Heat
-  Scattered Heat
-  Isolated Heat



NAD83 UTM Zone 11
 Map Produced: 07/10/2017 0330 PDT
 IRIN: Elsa Hucks

WHITTIER FIRE
CA-LPF-001770
 Infrared Interpretation
 Date of Imagery: 07/09/2017 2235 PDT



120°1'30"W 120°1'0"W 120°0'30"W 120°0'0"W 119°59'30"W 119°59'0"W 119°58'30"W 119°58'0"W 119°57'30"W 119°57'0"W 119°56'30"W 119°56'0"W 119°55'30"W 119°55'0"W 119°54'30"W 119°54'0"W 119°53'30"W 119°53'0"W 119°52'30"W 119°52'0"W 119°51'30"W