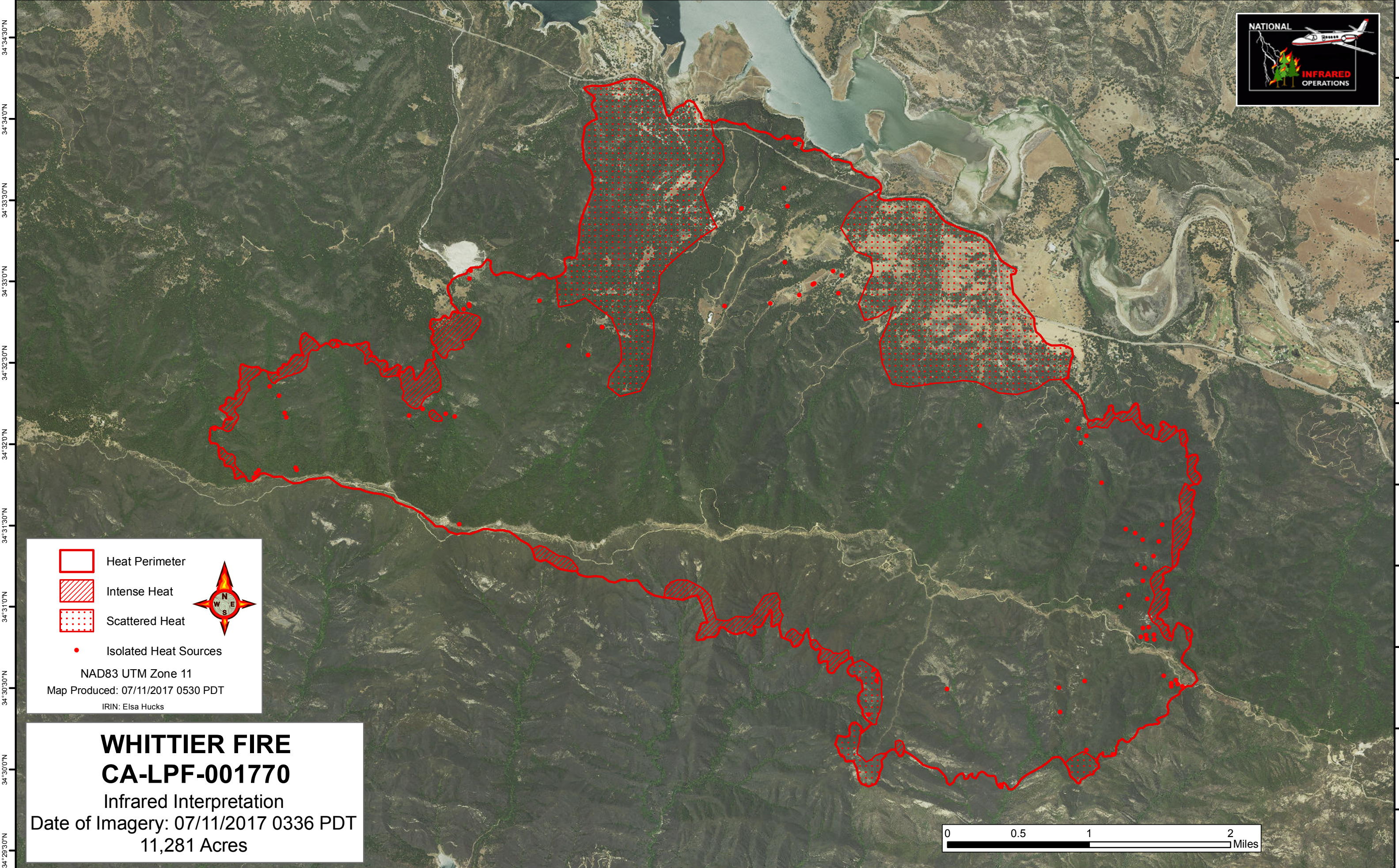
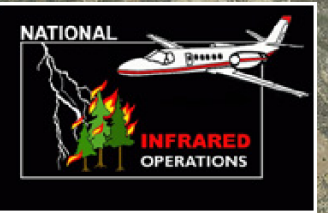






120°2'0"W 120°1'30"W 120°1'0"W 120°0'30"W 120°0'0"W 119°59'30"W 119°59'0"W 119°58'30"W 119°58'0"W 119°57'30"W 119°57'0"W 119°56'30"W 119°56'0"W 119°55'30"W 119°55'0"W 119°54'30"W 119°54'0"W 119°53'30"W 119°53'0"W 119°52'30"W 119°52'0"W

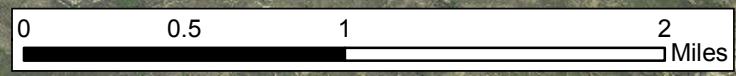


-  Heat Perimeter
-  Intense Heat
-  Scattered Heat
-  Isolated Heat Sources



NAD83 UTM Zone 11
 Map Produced: 07/11/2017 0530 PDT
 IRIN: Elsa Hucks

WHITTIER FIRE
CA-LPF-001770
 Infrared Interpretation
 Date of Imagery: 07/11/2017 0336 PDT
 11,281 Acres



120°1'30"W 120°1'0"W 120°0'30"W 120°0'0"W 119°59'30"W 119°59'0"W 119°58'30"W 119°58'0"W 119°57'30"W 119°57'0"W 119°56'30"W 119°56'0"W 119°55'30"W 119°55'0"W 119°54'30"W 119°54'0"W 119°53'30"W 119°53'0"W 119°52'30"W 119°52'0"W