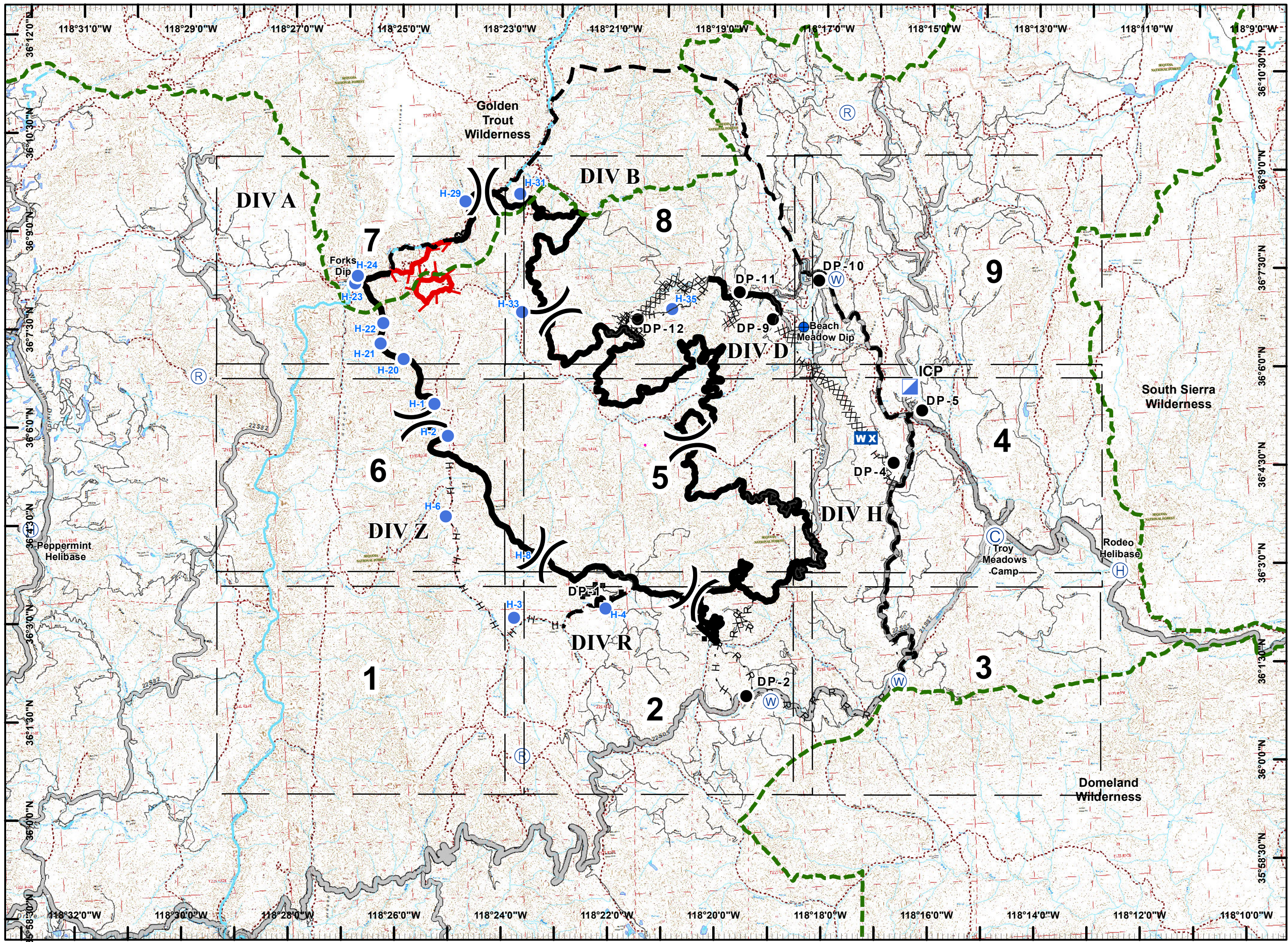
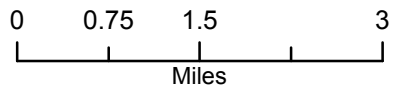


**Schaeffer Fire
CA-SQF-001317
July 18, 0600 to
July 22, 1800
16,031 Acres
IAP Map**

- Legend**
- Division Break
 - Repeater
 - Camp
 - Dip Site
 - Drop Point
 - Helibase
 - Helispot
 - Mobile Weather Unit
 - Water Source
 - Uncontrolled Fire Edge
 - Completed Line
 - H - H Completed Hand Line
 - Proposed Containment Line
 - Wilderness Boundary

7	8	9
6	5	4
1	2	3

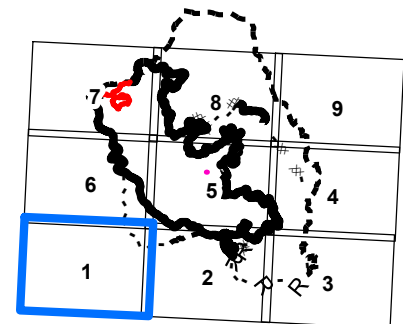


**Schaeffer Fire
CA-SQF-001317
July 18, 0600 to
July 22, 1800
Day Shift**

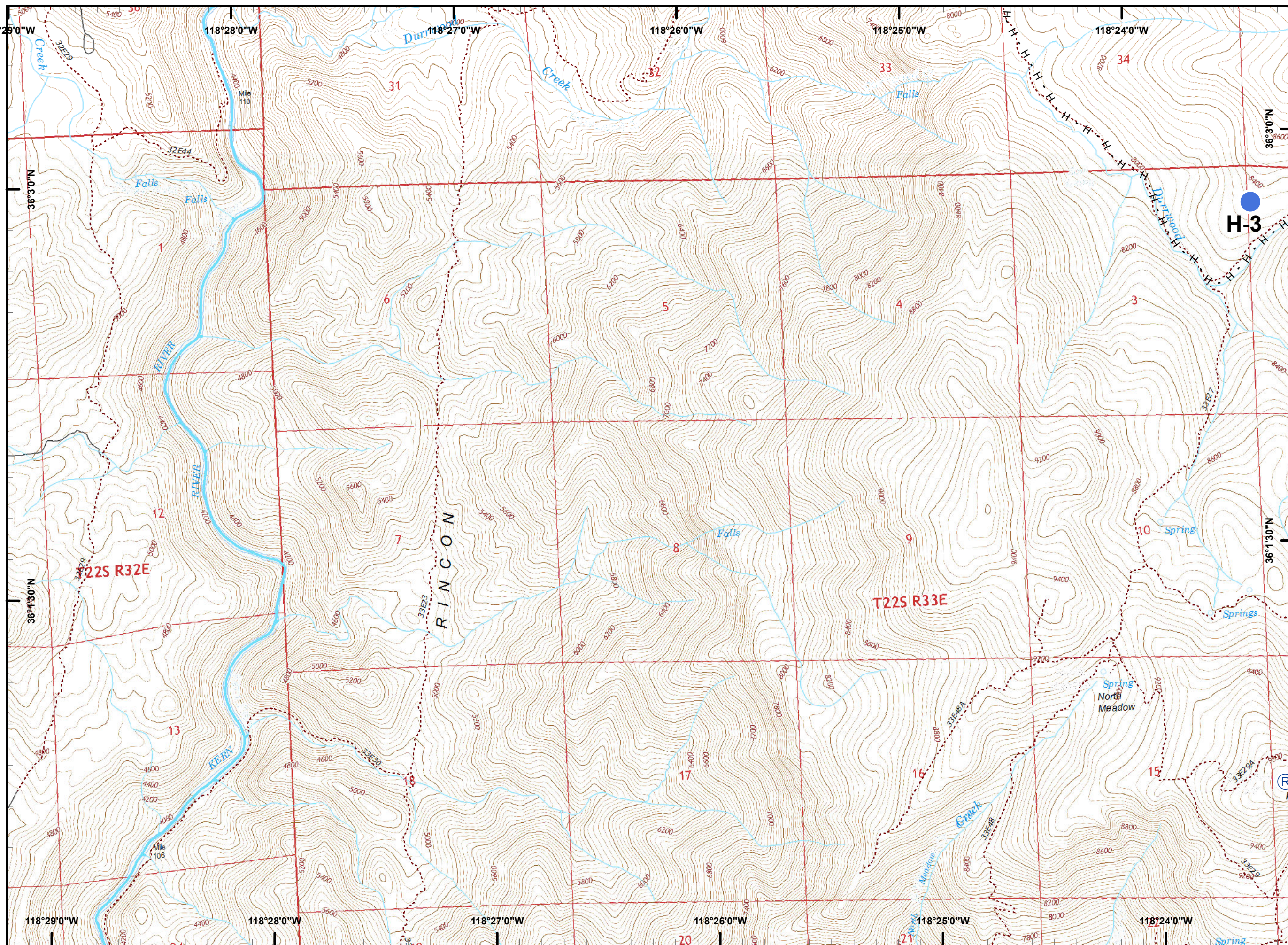
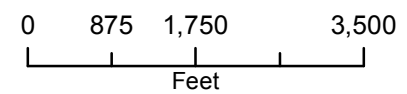
Page 1

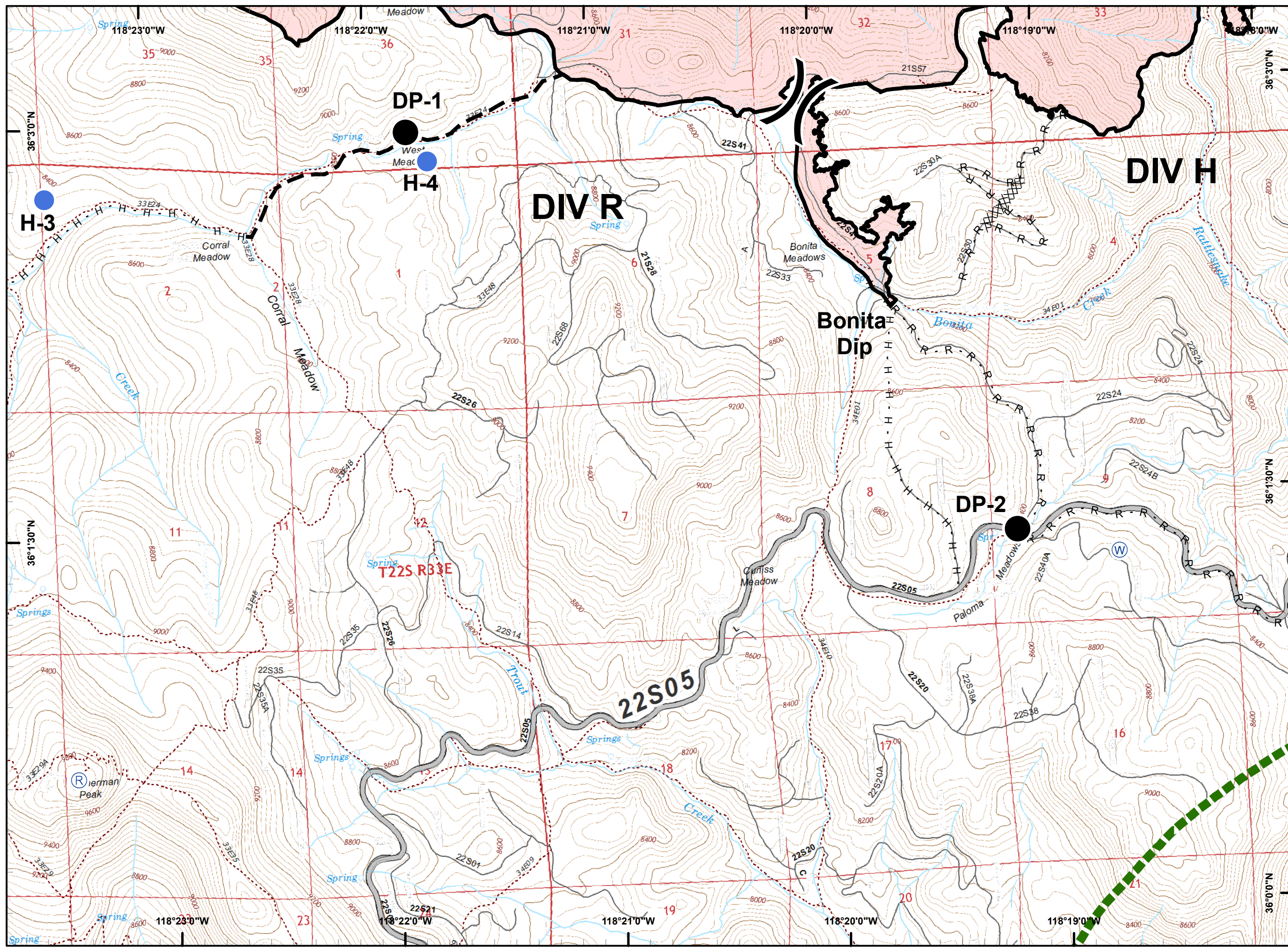
Legend

- () Division Break
- (R) Repeater
- (C) Camp
- ⊕ Dip Site
- Drop Point
- (H) Helibase
- Helispot
- WX Mobile Weather Unit
- (W) Water Source
- ┌ Uncontrolled Fire Edge
- ▬ Completed Line
- H - H Completed Hand Line
- - - Proposed Containment Line
- ▭ Wilderness Boundary



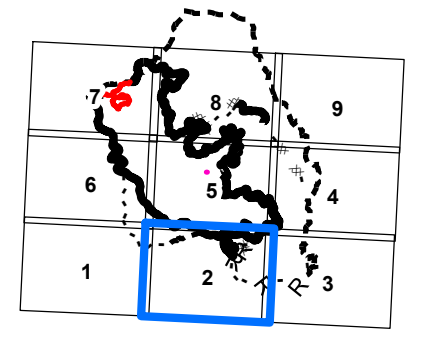
PDF Maps



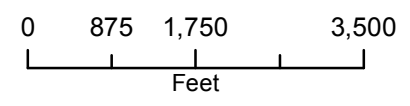


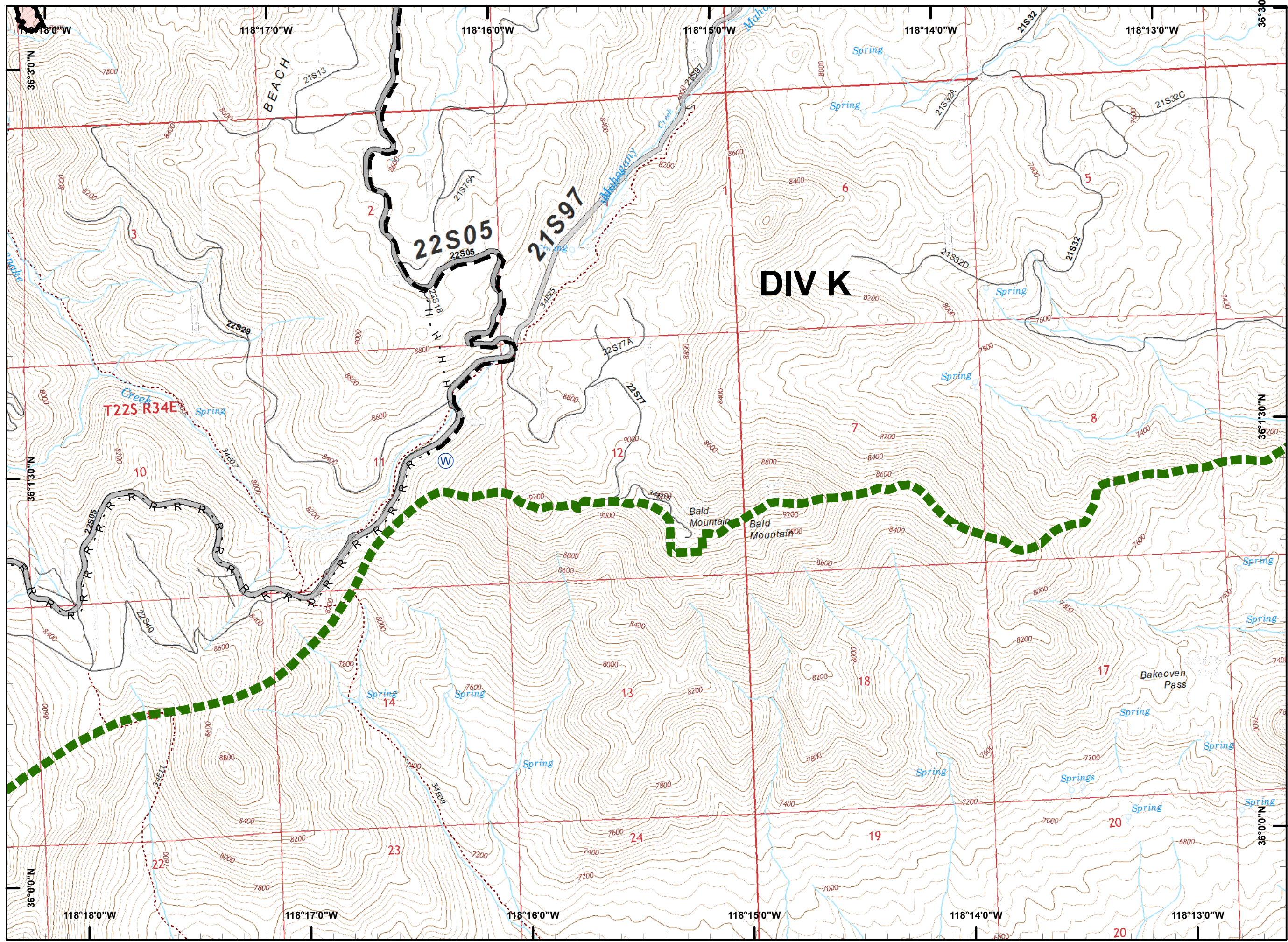
Legend

- () Division Break
- (R) Repeater
- (C) Camp
- Dip Site
- Drop Point
- (H) Helibase
- Helispot
- WX Mobile Weather Unit
- (W) Water Source
- Uncontrolled Fire Edge
- Completed Line
- H - H Completed Hand Line
- - - Proposed Containment Line
- Wilderness Boundary



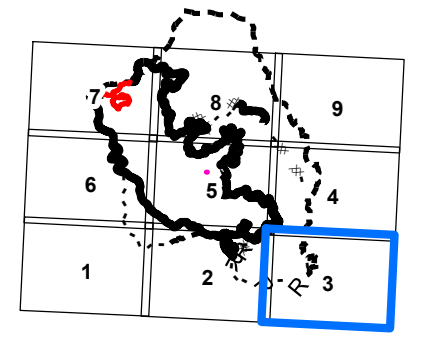
PDF Maps



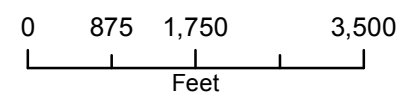


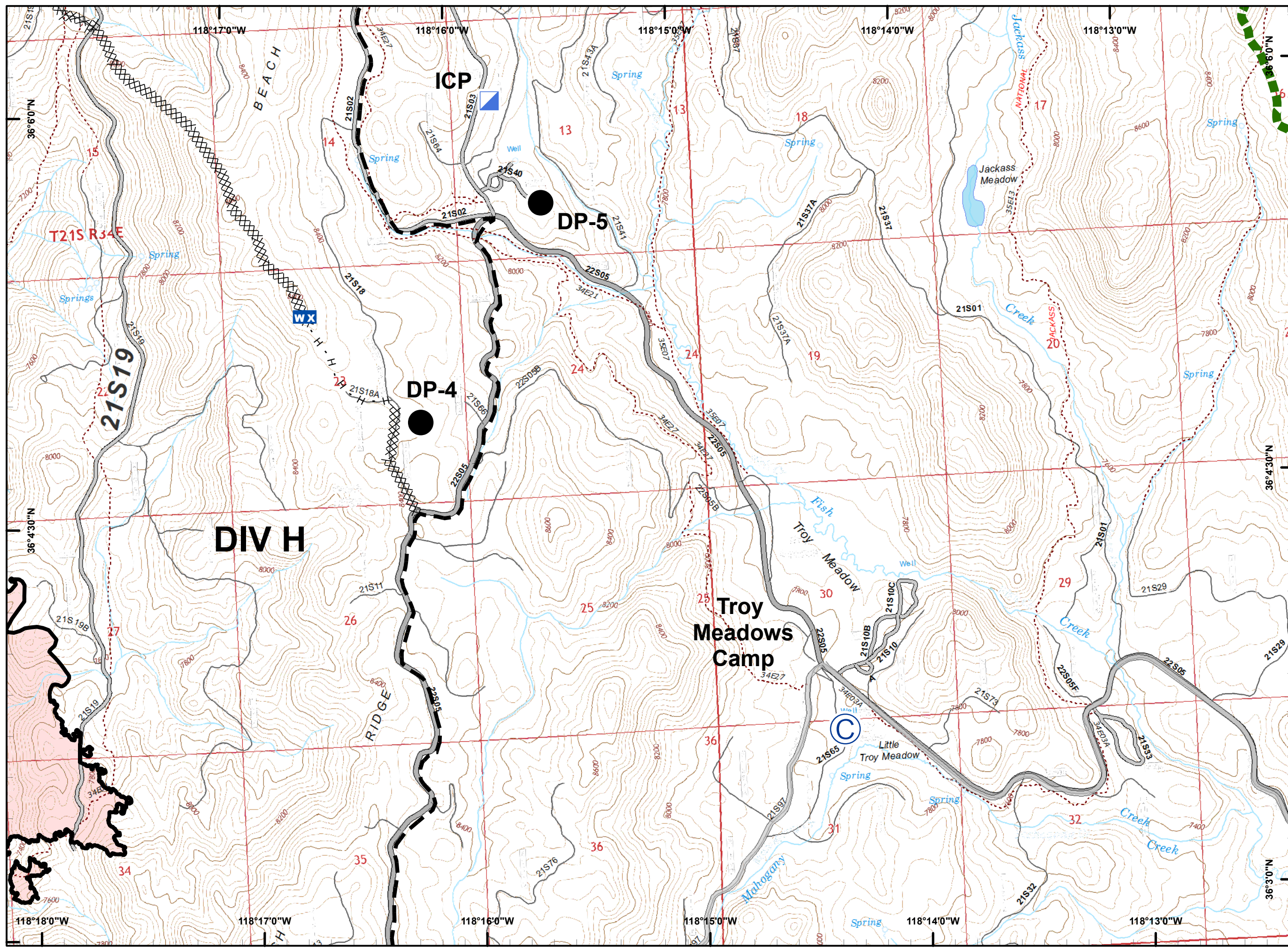
Legend

- () Division Break
- (R) Repeater
- (C) Camp
- (D) Dip Site
- (●) Drop Point
- (H) Helibase
- (●) Helispot
- (WX) Mobile Weather Unit
- (W) Water Source
- (T) Uncontrolled Fire Edge
- (—) Completed Line
- (H - H) Completed Hand Line
- (---) Proposed Containment Line
- (---) Wilderness Boundary



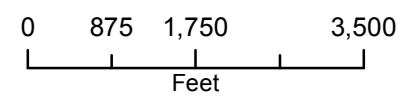
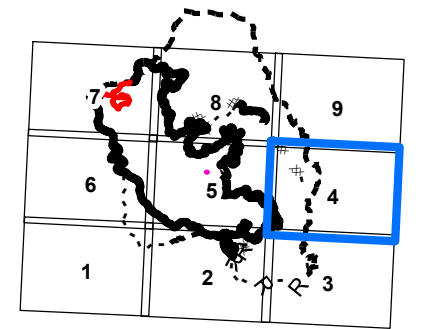
PDF Maps

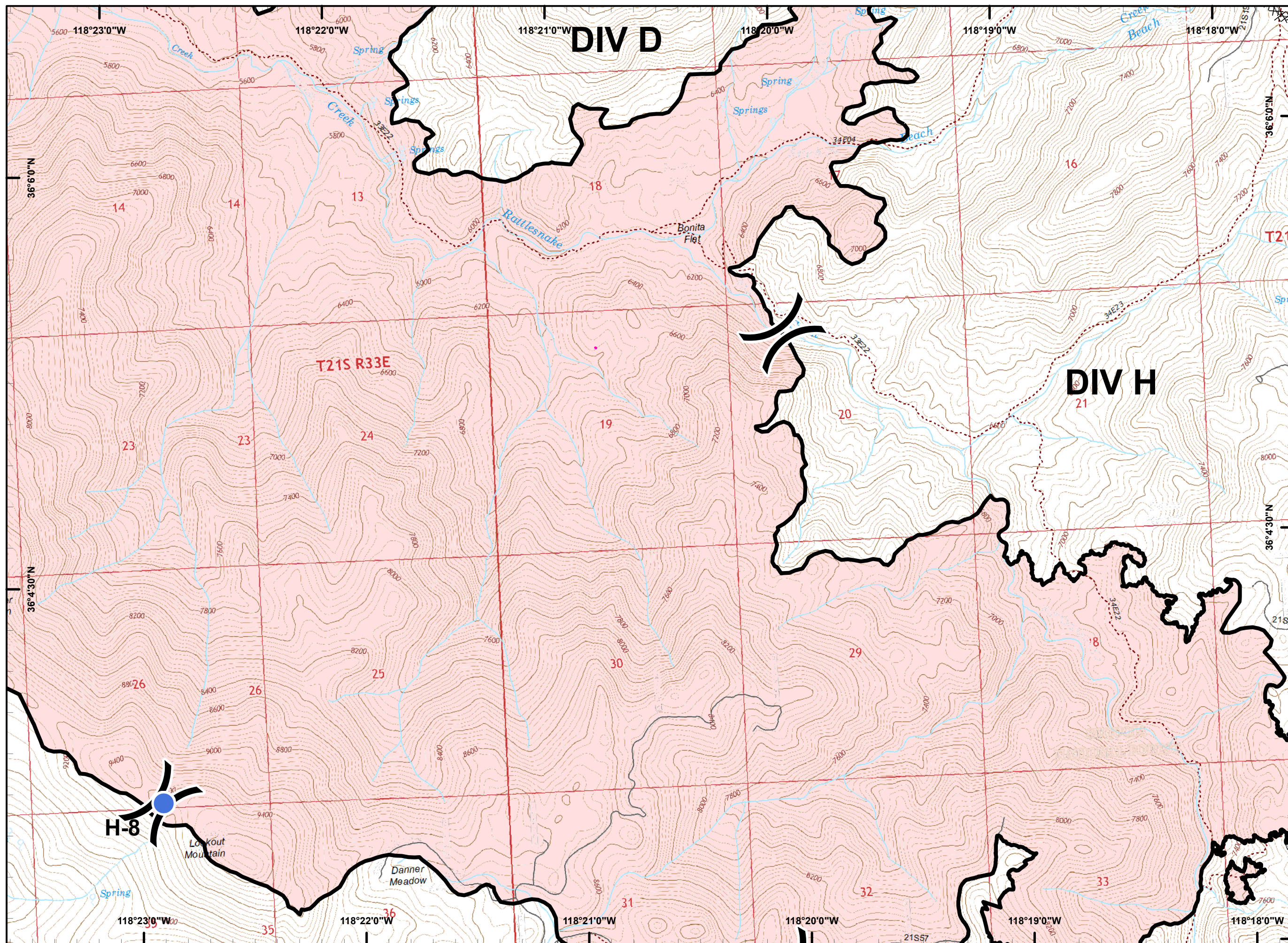




Legend

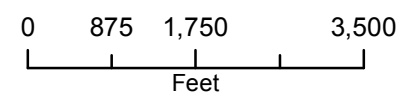
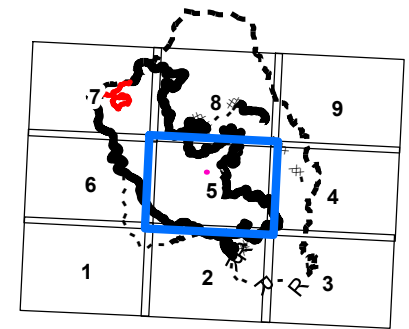
- Division Break
- Repeater
- Camp
- Dip Site
- Drop Point
- Helibase
- Helispot
- Mobile Weather Unit
- Water Source
- Uncontrolled Fire Edge
- Completed Line
- H - H Completed Hand Line
- Proposed Containment Line
- Wilderness Boundary

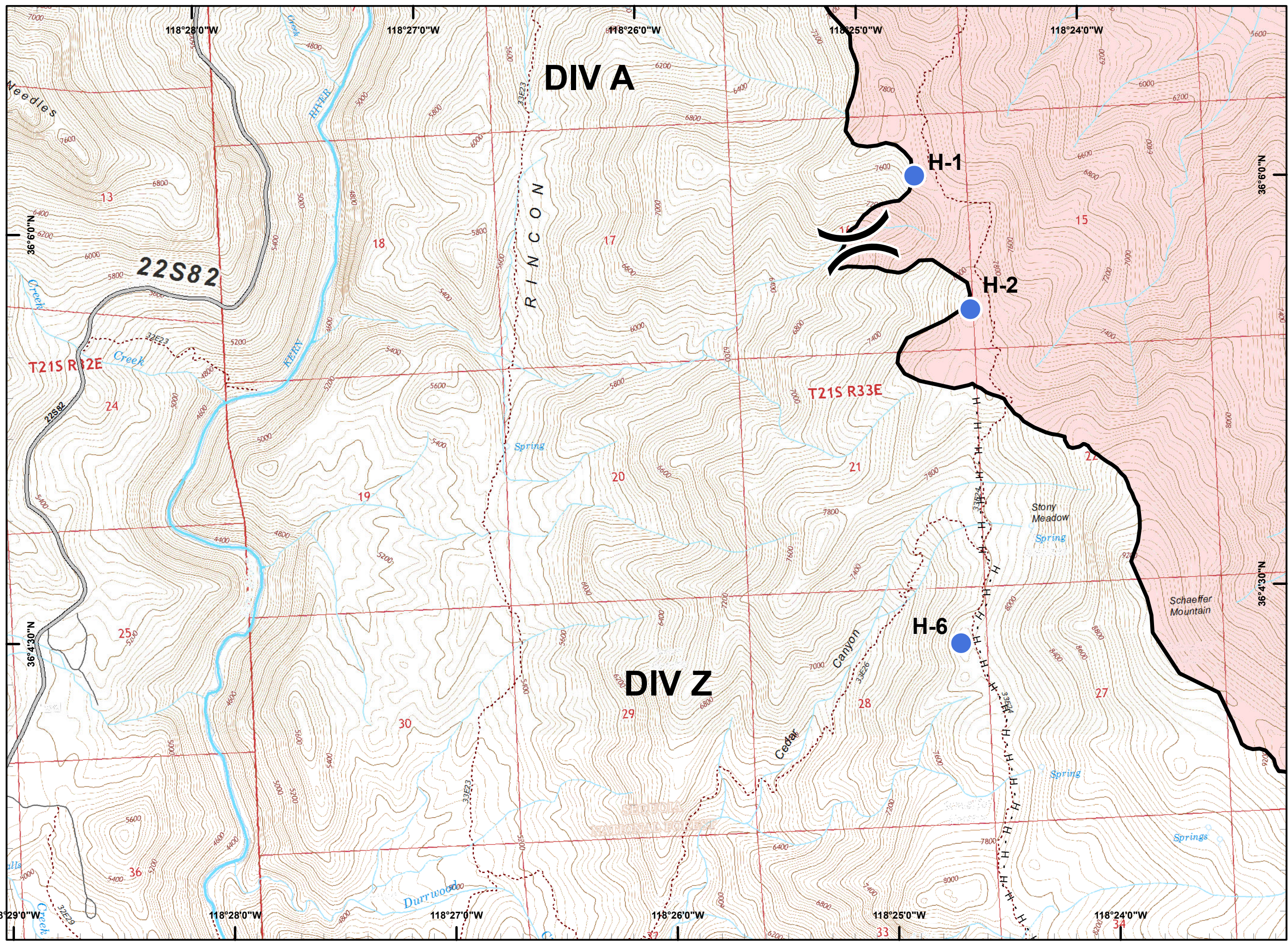




Legend

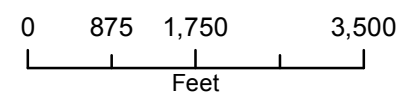
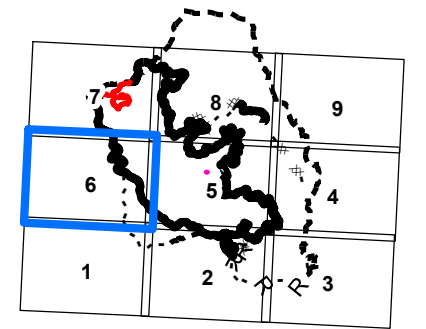
- (X) Division Break
- (R) Repeater
- (C) Camp
- ⊕ Dip Site
- Drop Point
- (H) Helibase
- Helispot
- WX Mobile Weather Unit
- (W) Water Source
- ┌ Uncontrolled Fire Edge
- ▬ Completed Line
- H - H Completed Hand Line
- - - Proposed Containment Line
- ▭ Wilderness Boundary

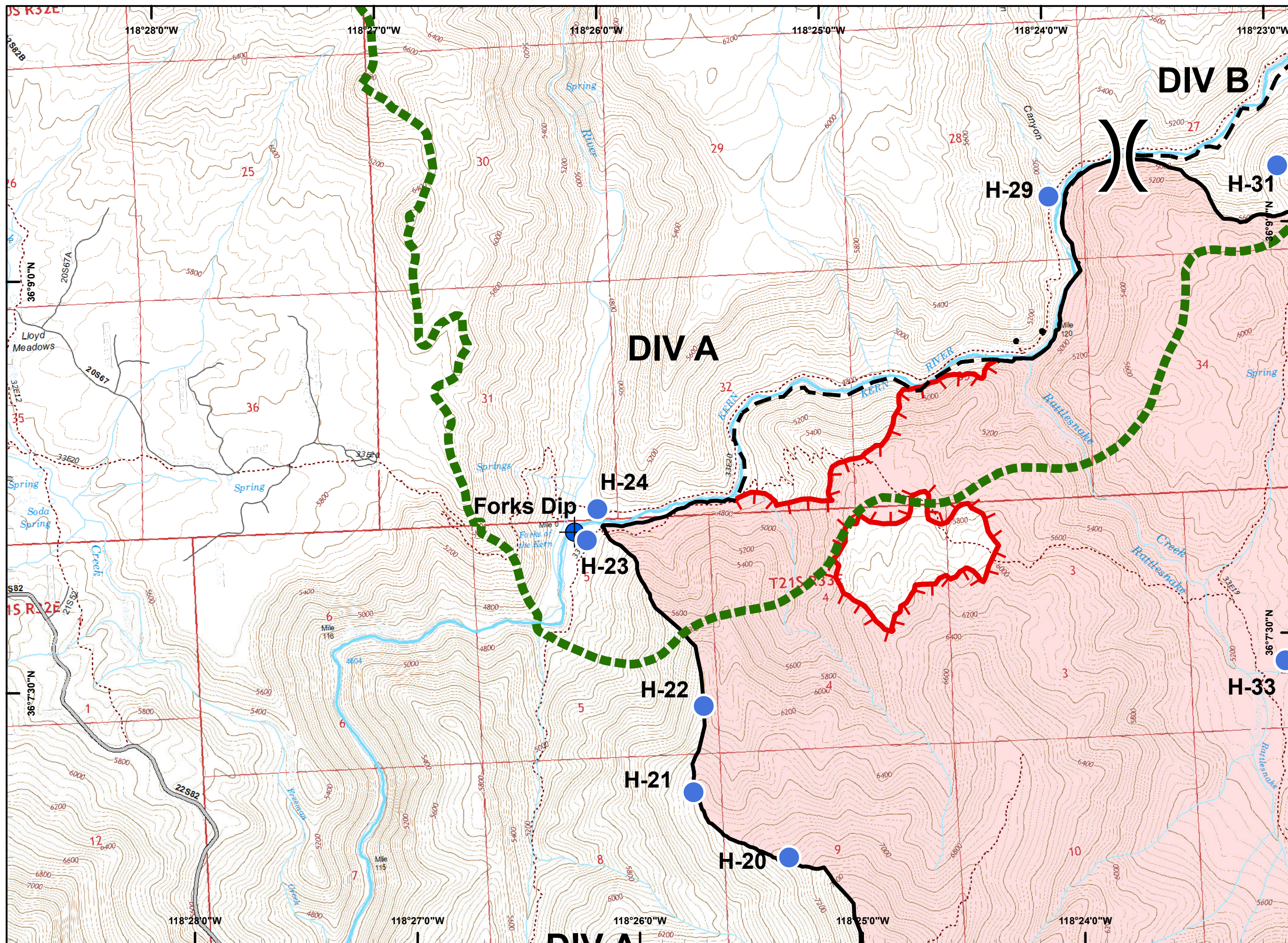




Legend

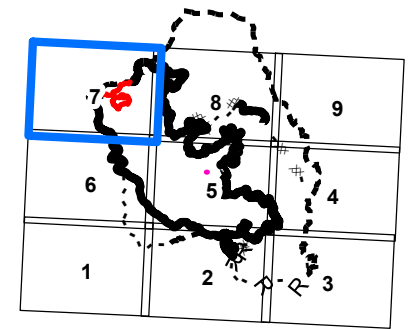
- (X) Division Break
- (R) Repeater
- (C) Camp
- Dip Site
- Drop Point
- (H) Helibase
- Helispot
- WX Mobile Weather Unit
- (W) Water Source
- Uncontrolled Fire Edge
- Completed Line
- H - H Completed Hand Line
- Proposed Containment Line
- Wilderness Boundary





Legend

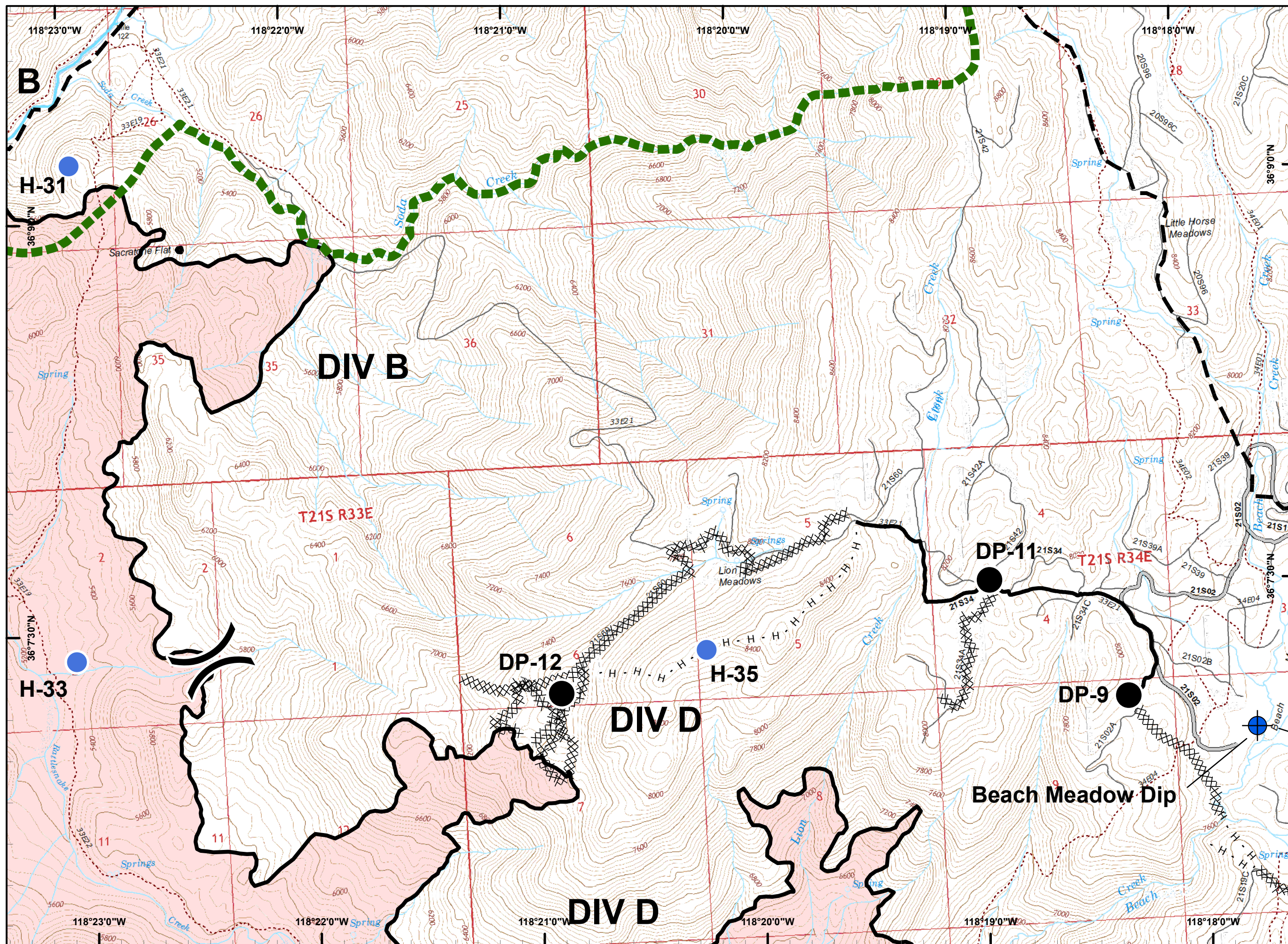
- () Division Break
- (R) Repeater
- (C) Camp
- Dip Site
- Drop Point
- (H) Helibase
- Helispot
- WX Mobile Weather Unit
- (W) Water Source
- ┌ Uncontrolled Fire Edge
- Completed Line
- H - H Completed Hand Line
- - - Proposed Containment Line
- ▬ Wilderness Boundary



PDF Maps

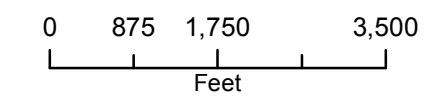
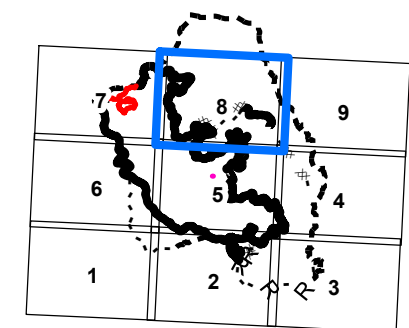
0 875 1,750 3,500
Feet

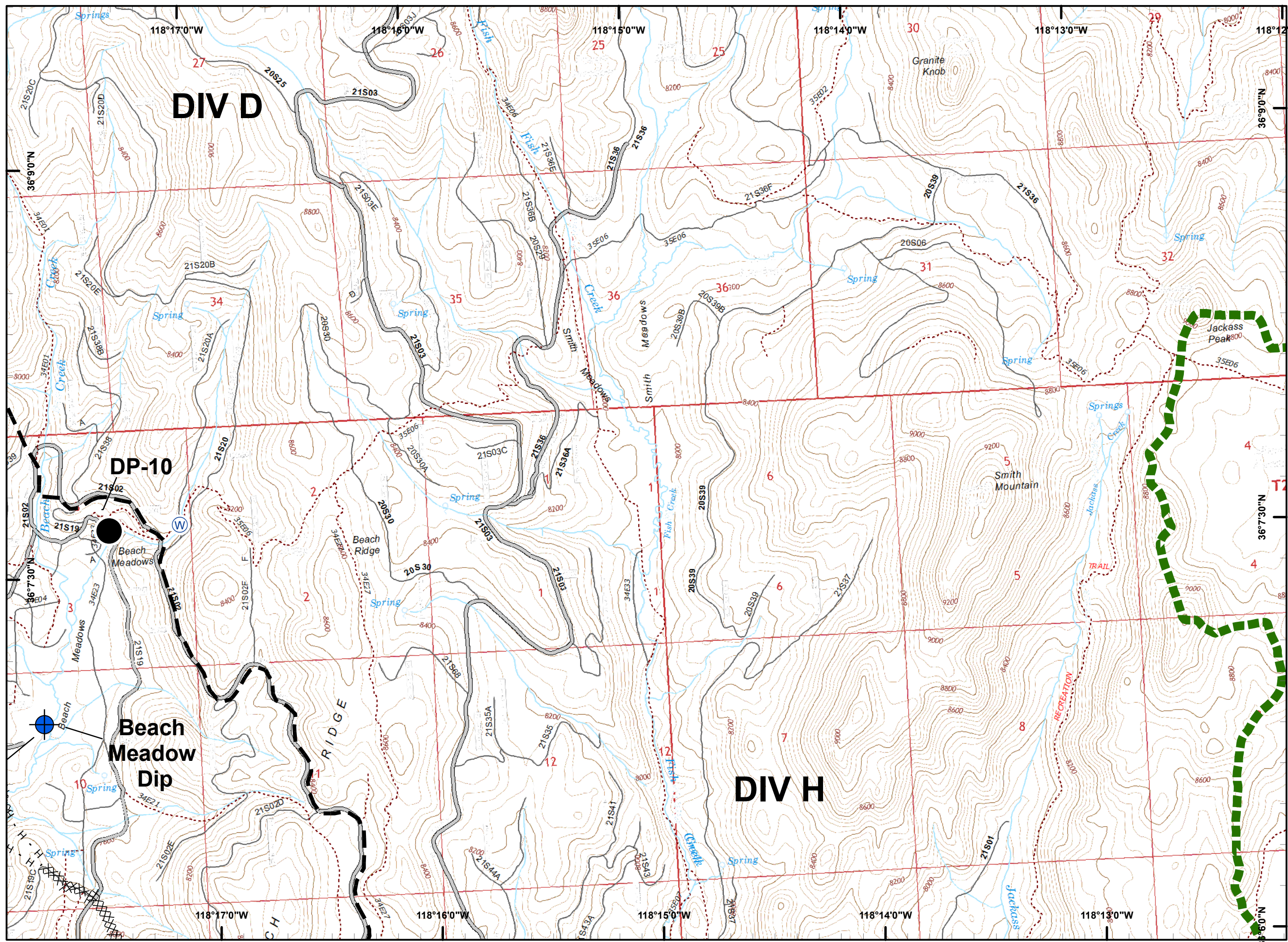




Legend

- () Division Break
- (R) Repeater
- (C) Camp
- ⊕ Dip Site
- Drop Point
- (H) Helibase
- Helispot
- WX Mobile Weather Unit
- (W) Water Source
- ┌ Uncontrolled Fire Edge
- Completed Line
- H - H Completed Hand Line
- - - Proposed Containment Line
- ┌ Wilderness Boundary





Legend

- () Division Break
- (R) Repeater
- (C) Camp
- (D) Dip Site
- (●) Drop Point
- (H) Helibase
- (●) Helispot
- WX Mobile Weather Unit
- (W) Water Source
- Uncontrolled Fire Edge
- Completed Line
- H - H Completed Hand Line
- Proposed Containment Line
- Wilderness Boundary

