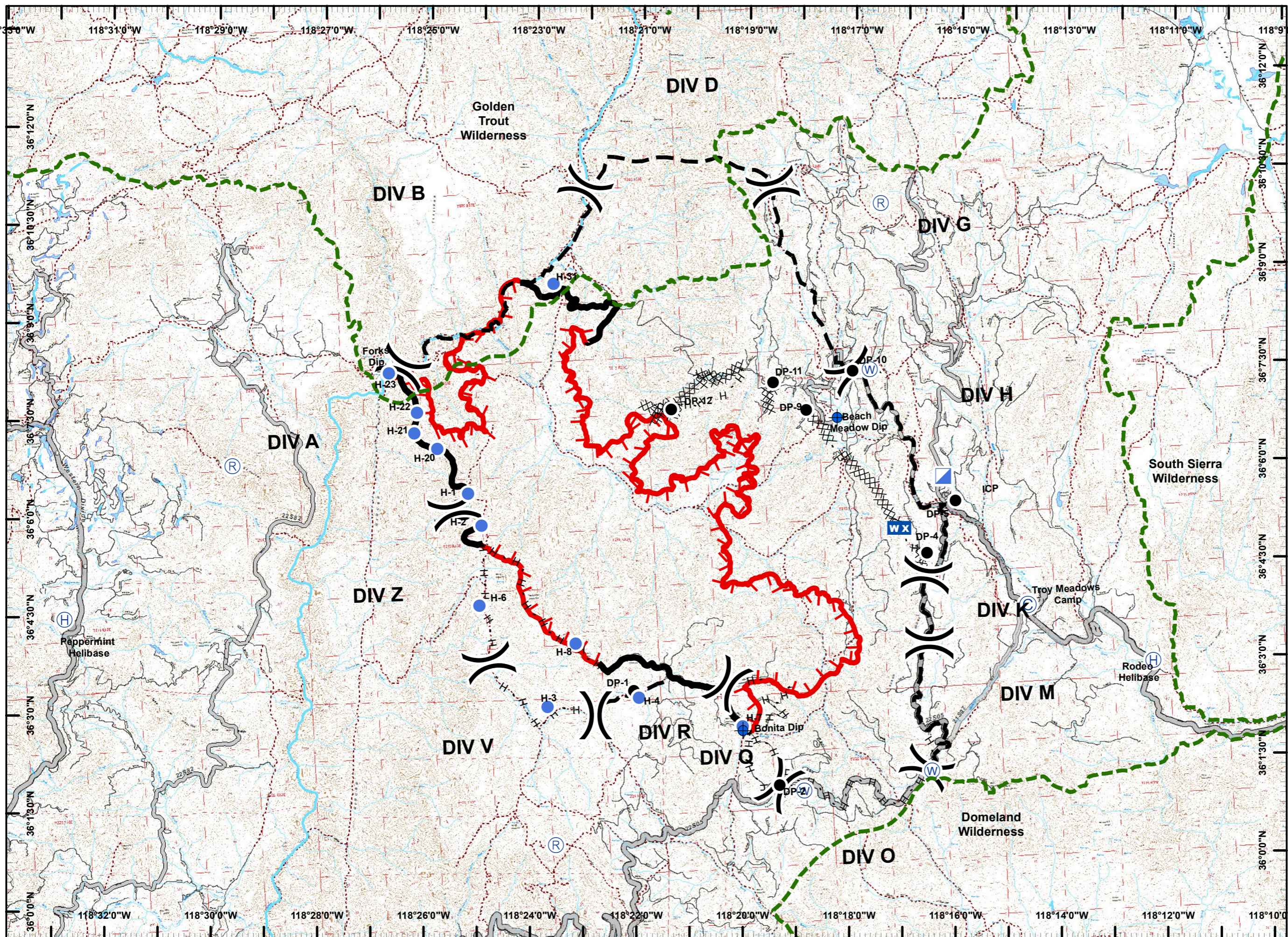
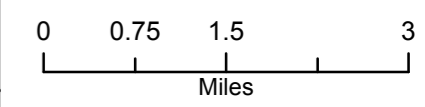
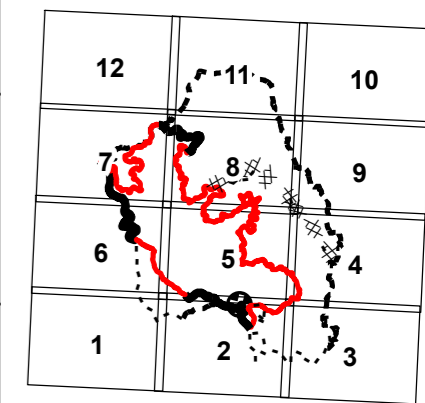
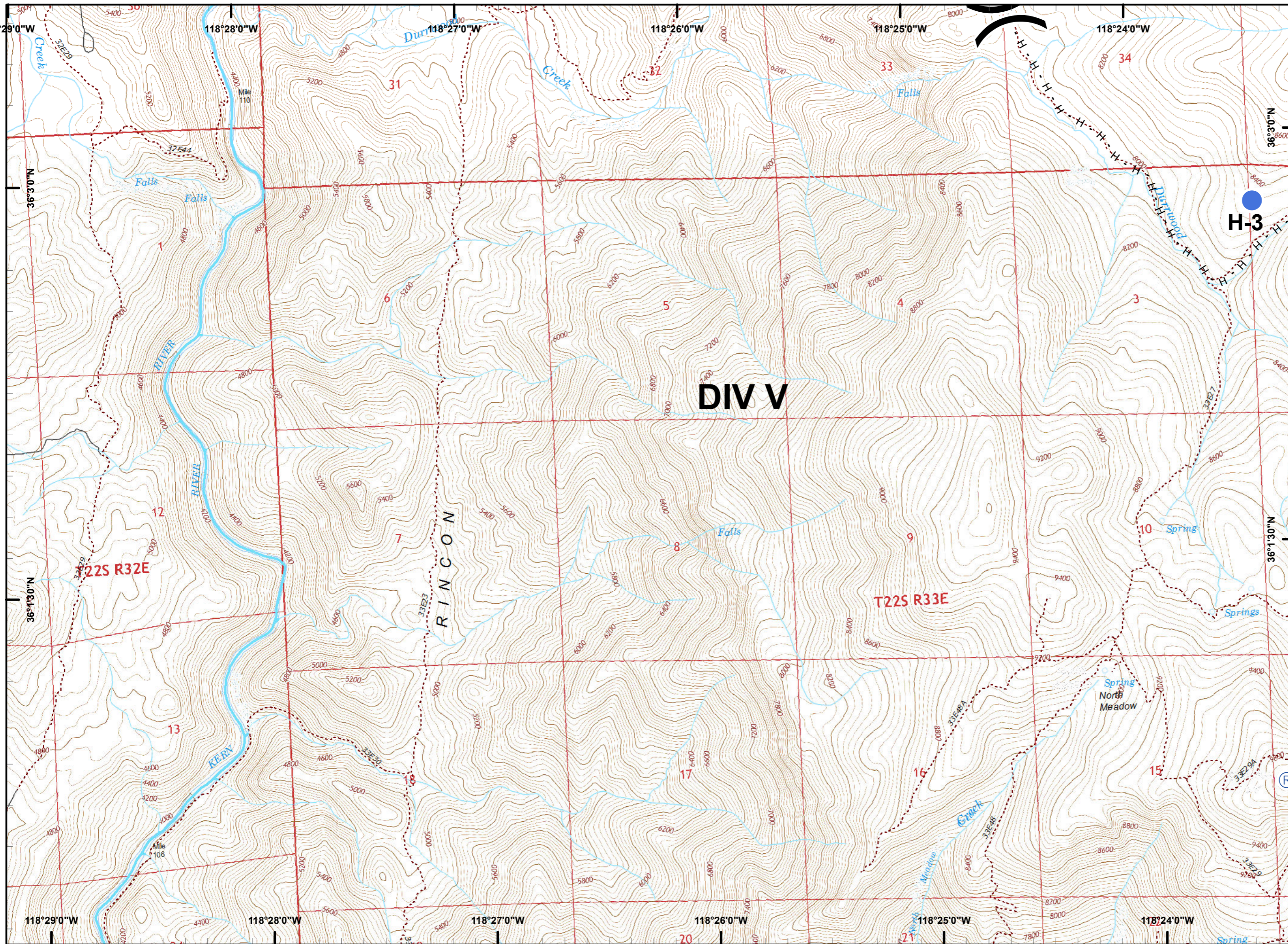


Schaeffer Fire
CA-SQF-001317
7/11/2017
14,934 Acres
IAP Map

Legend

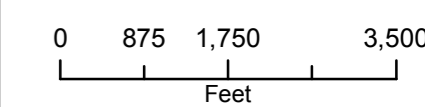
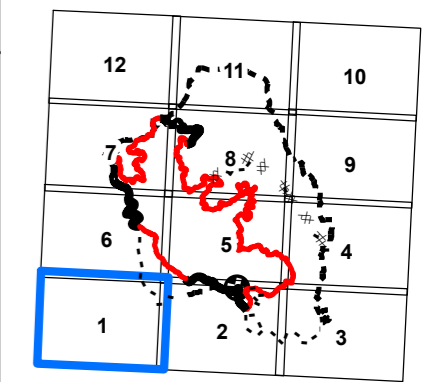
- Division Break
- Repeater
- Camp
- Dip Site
- Drop Point
- Helibase
- Helispot
- Mobile Weather Unit
- Water Source
- Uncontrolled Fire Edge
- Completed Line
- H - H Completed Hand Line
- Proposed Containment Line
- Wilderness Boundary

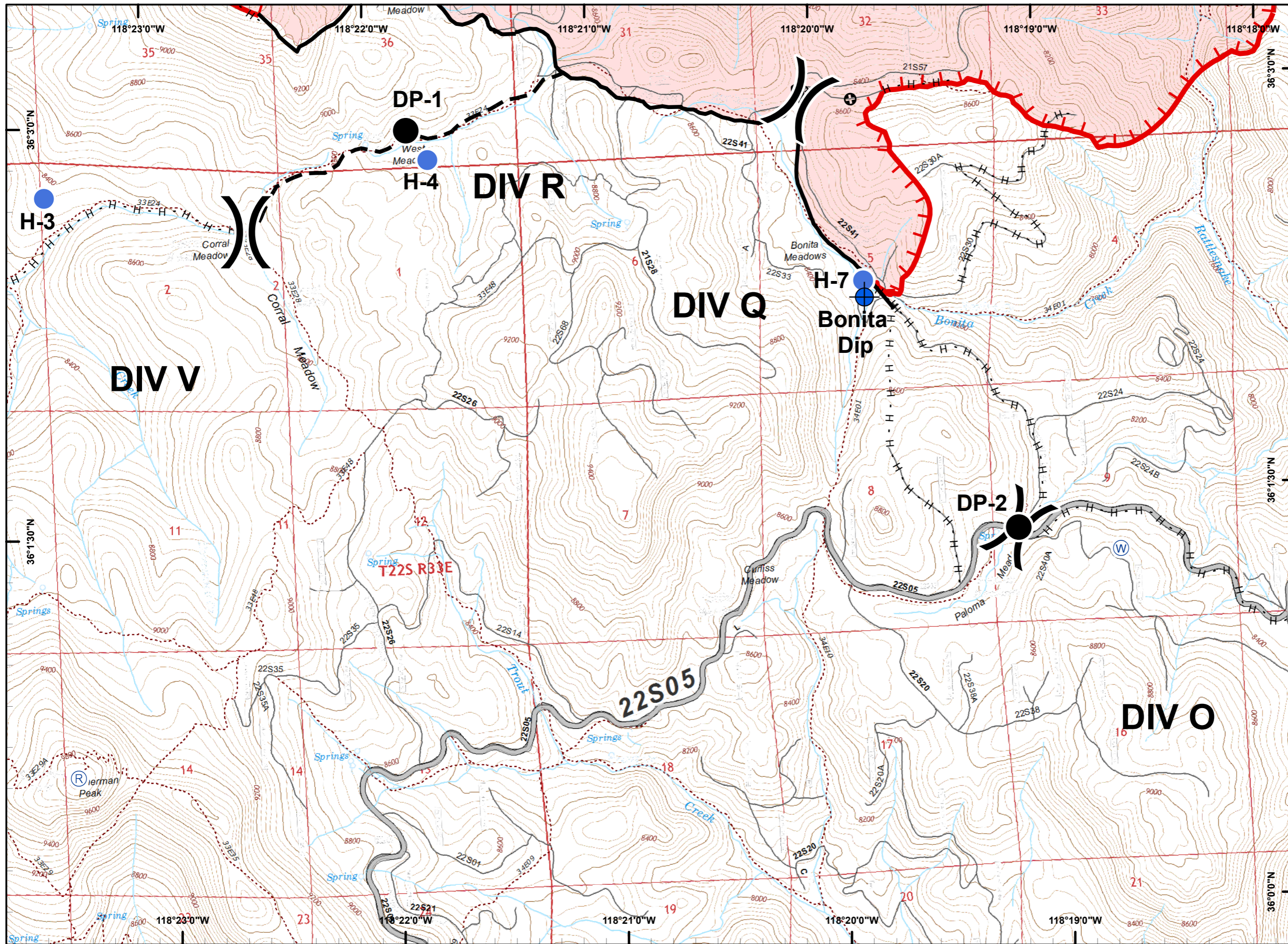




Legend

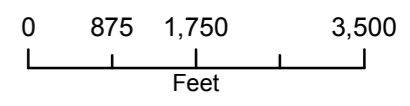
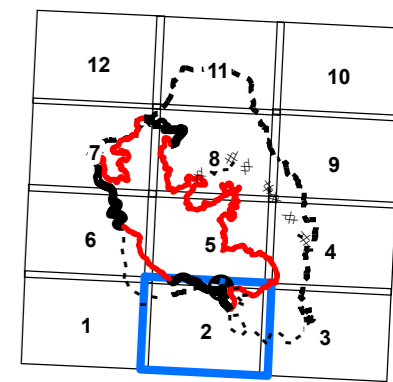
- () Division Break
- (R) Repeater
- (C) Camp
- Dip Site
- Drop Point
- (H) Helibase
- Helispot
- WX Mobile Weather Unit
- (W) Water Source
- Uncontrolled Fire Edge
- Completed Line
- H - H Completed Hand Line
- - - Proposed Containment Line
- ▭ Wilderness Boundary

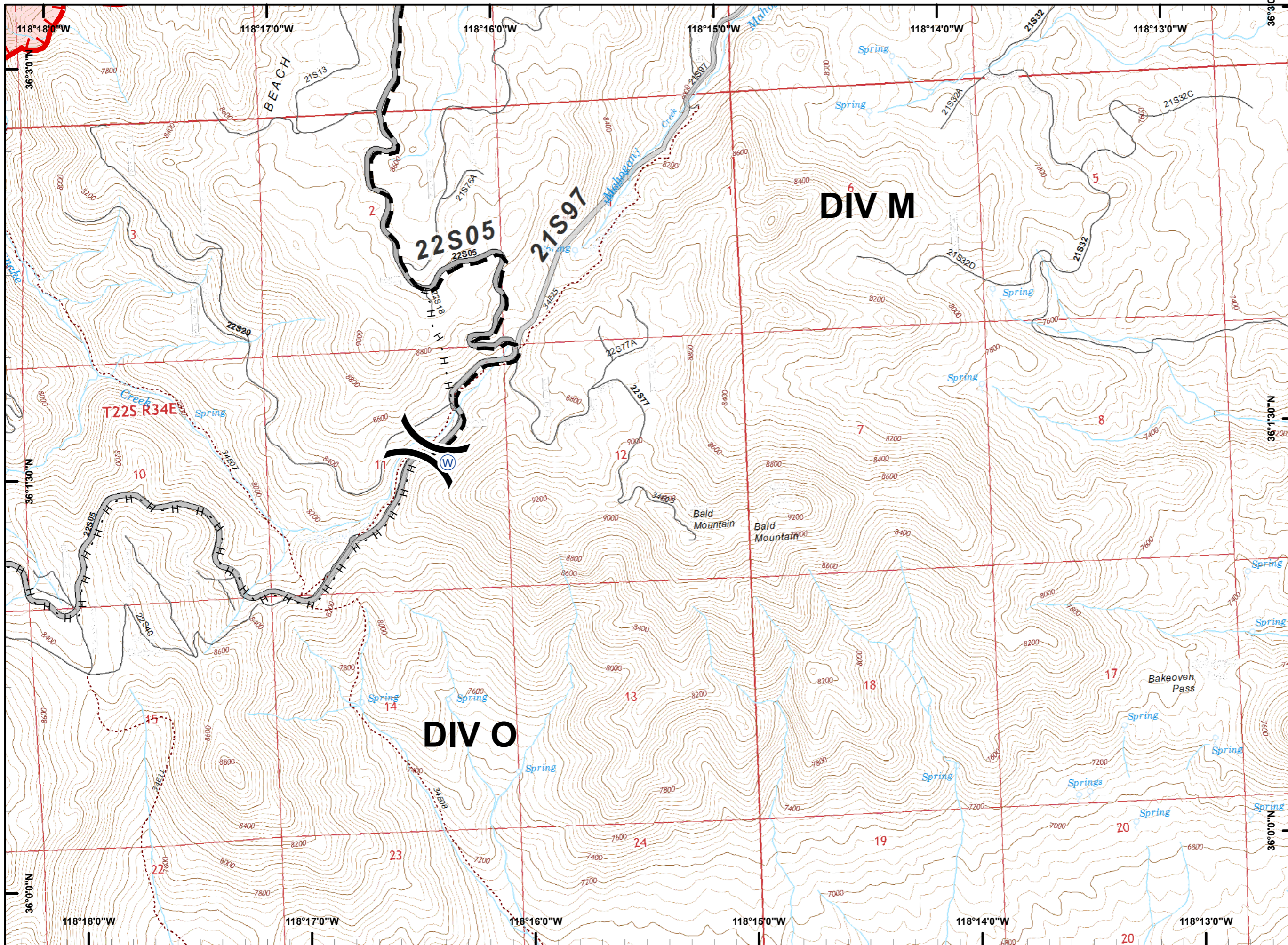




Legend

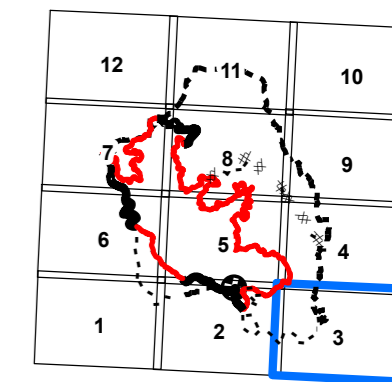
- Division Break
- Repeater
- Camp
- Dip Site
- Drop Point
- Helibase
- Helispot
- Mobile Weather Unit
- Water Source
- Uncontrolled Fire Edge
- Completed Line
- Completed Hand Line
- Proposed Containment Line
- Wilderness Boundary



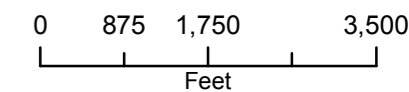


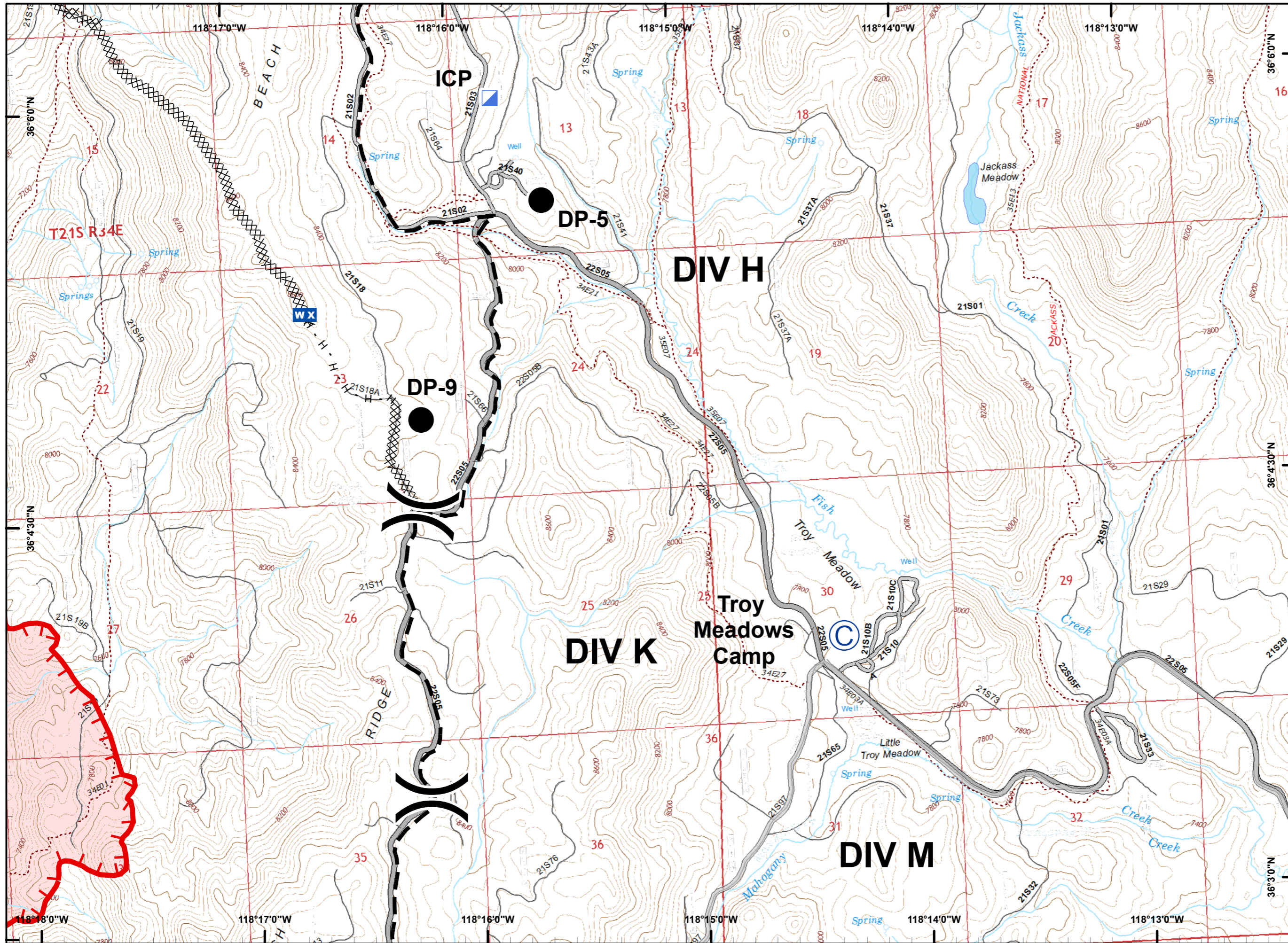
Legend

- () Division Break
- (R) Repeater
- (C) Camp
- ⊕ Dip Site
- Drop Point
- (H) Helibase
- Helispot
- WX Mobile Weather Unit
- (W) Water Source
- ┌ Uncontrolled Fire Edge
- ▬ Completed Line
- H - H Completed Hand Line
- - - Proposed Containment Line
- ▭ Wilderness Boundary



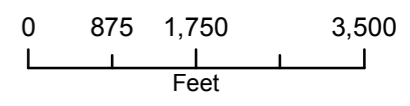
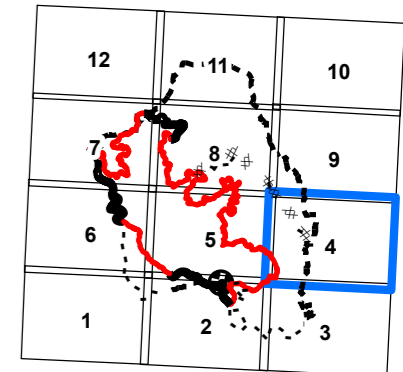
PDF Maps

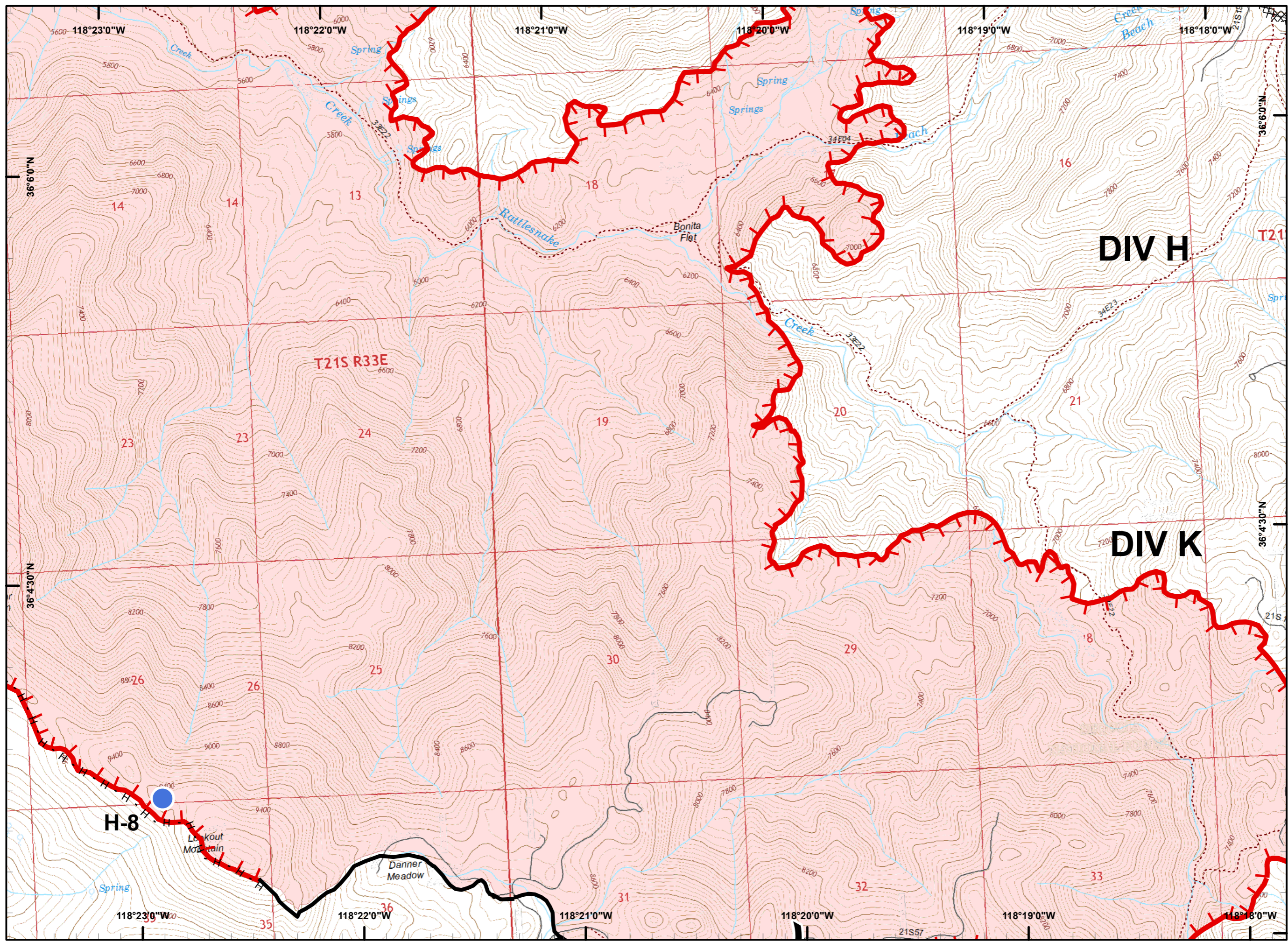




Legend

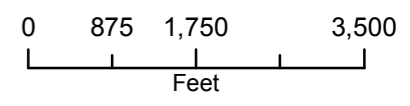
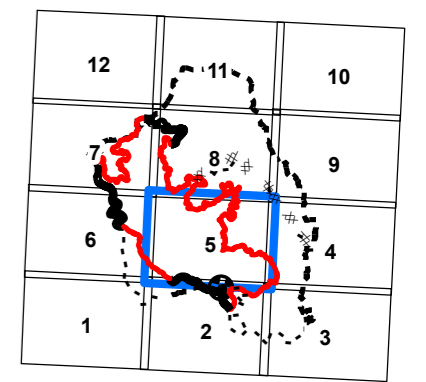
- () Division Break
- (R) Repeater
- (C) Camp
- ⊕ Dip Site
- Drop Point
- (H) Helibase
- Helispot
- WX Mobile Weather Unit
- (W) Water Source
- ┌ Uncontrolled Fire Edge
- ▬ Completed Line
- H - H Completed Hand Line
- - - Proposed Containment Line
- ▭ Wilderness Boundary

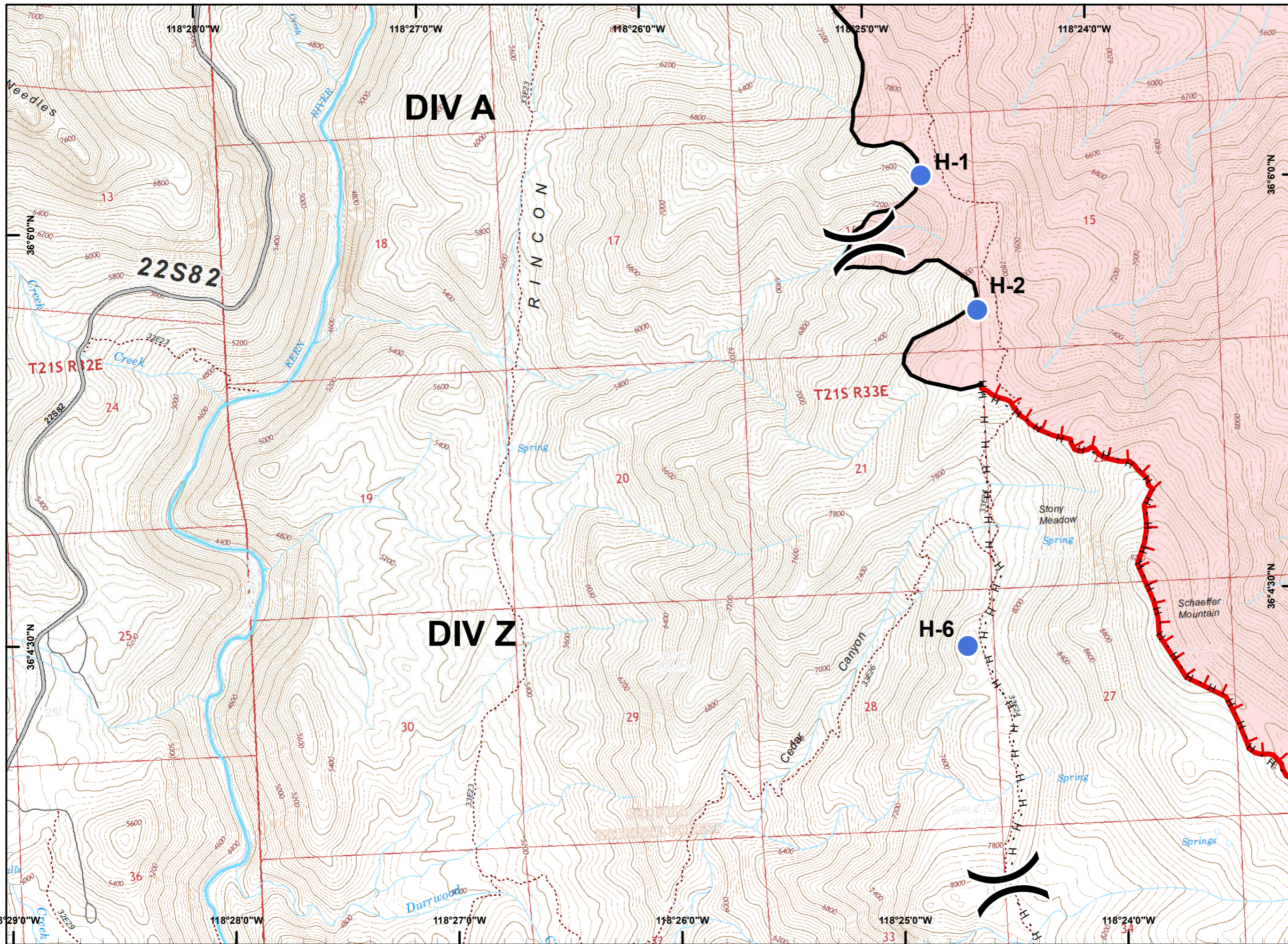




Legend

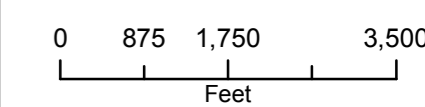
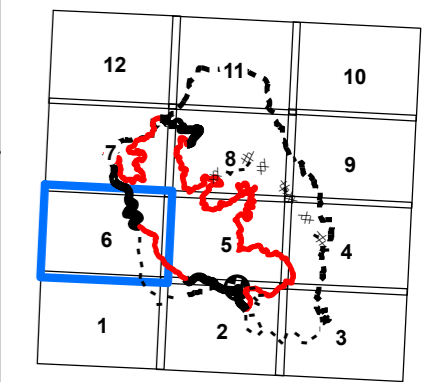
- () Division Break
- (R) Repeater
- (C) Camp
- ⊕ Dip Site
- Drop Point
- (H) Helibase
- Helispot
- WX Mobile Weather Unit
- (W) Water Source
- ┌┐ Uncontrolled Fire Edge
- ▬ Completed Line
- H - H Completed Hand Line
- - - Proposed Containment Line
- ▭ Wilderness Boundary

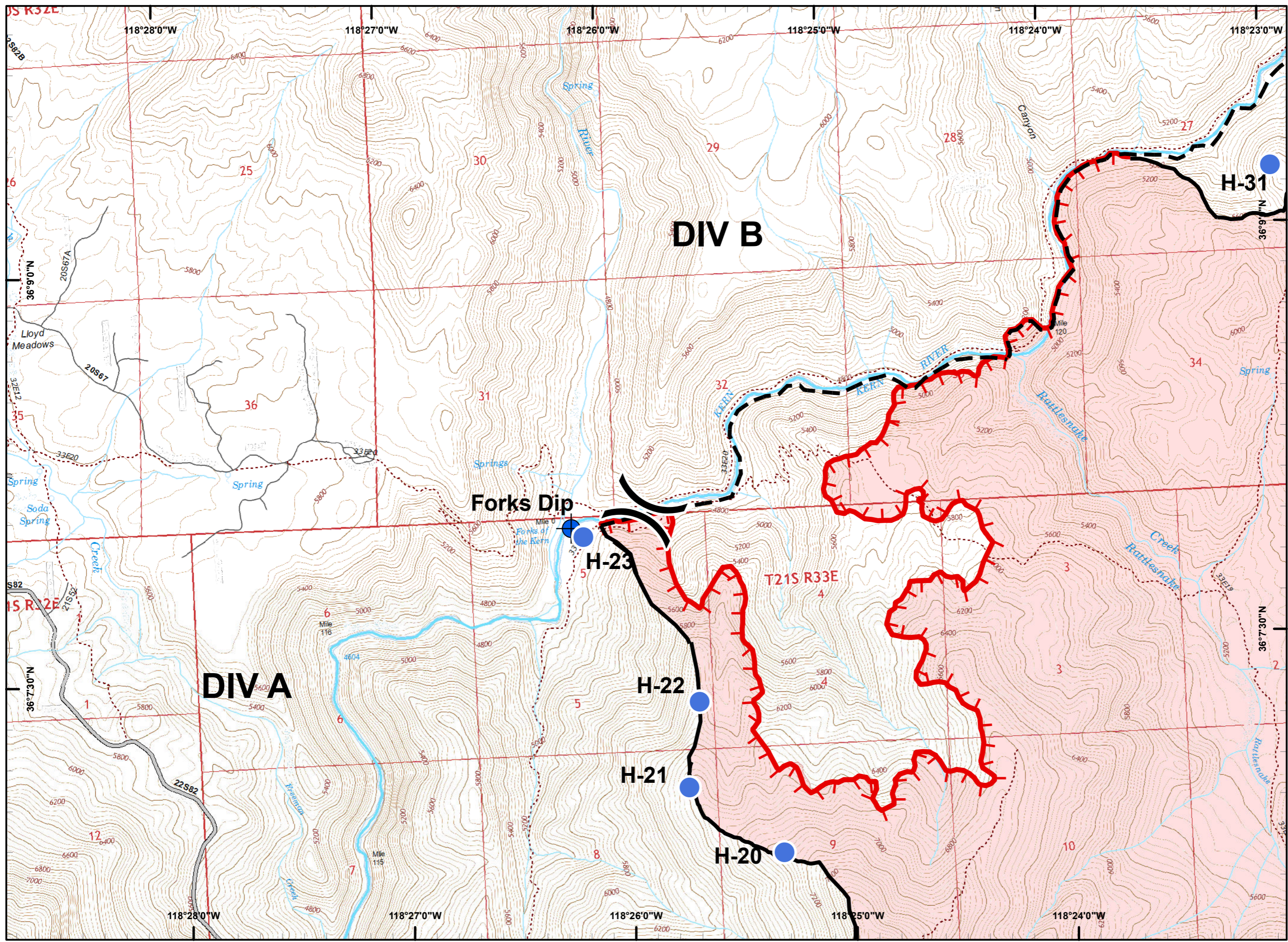




Legend

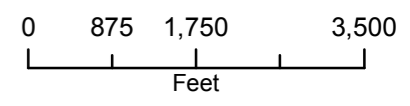
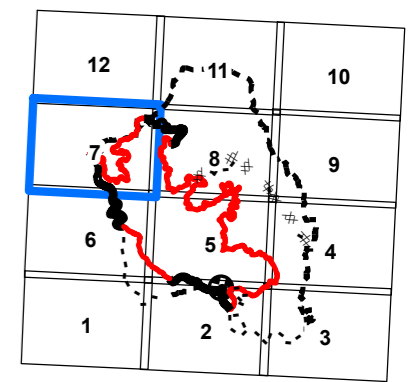
- (X) Division Break
- (R) Repeater
- (C) Camp
- Dip Site
- Drop Point
- (H) Helibase
- Helispot
- WX Mobile Weather Unit
- (W) Water Source
- ┌ Uncontrolled Fire Edge
- ▬ Completed Line
- H - H Completed Hand Line
- - - Proposed Containment Line
- ▭ Wilderness Boundary

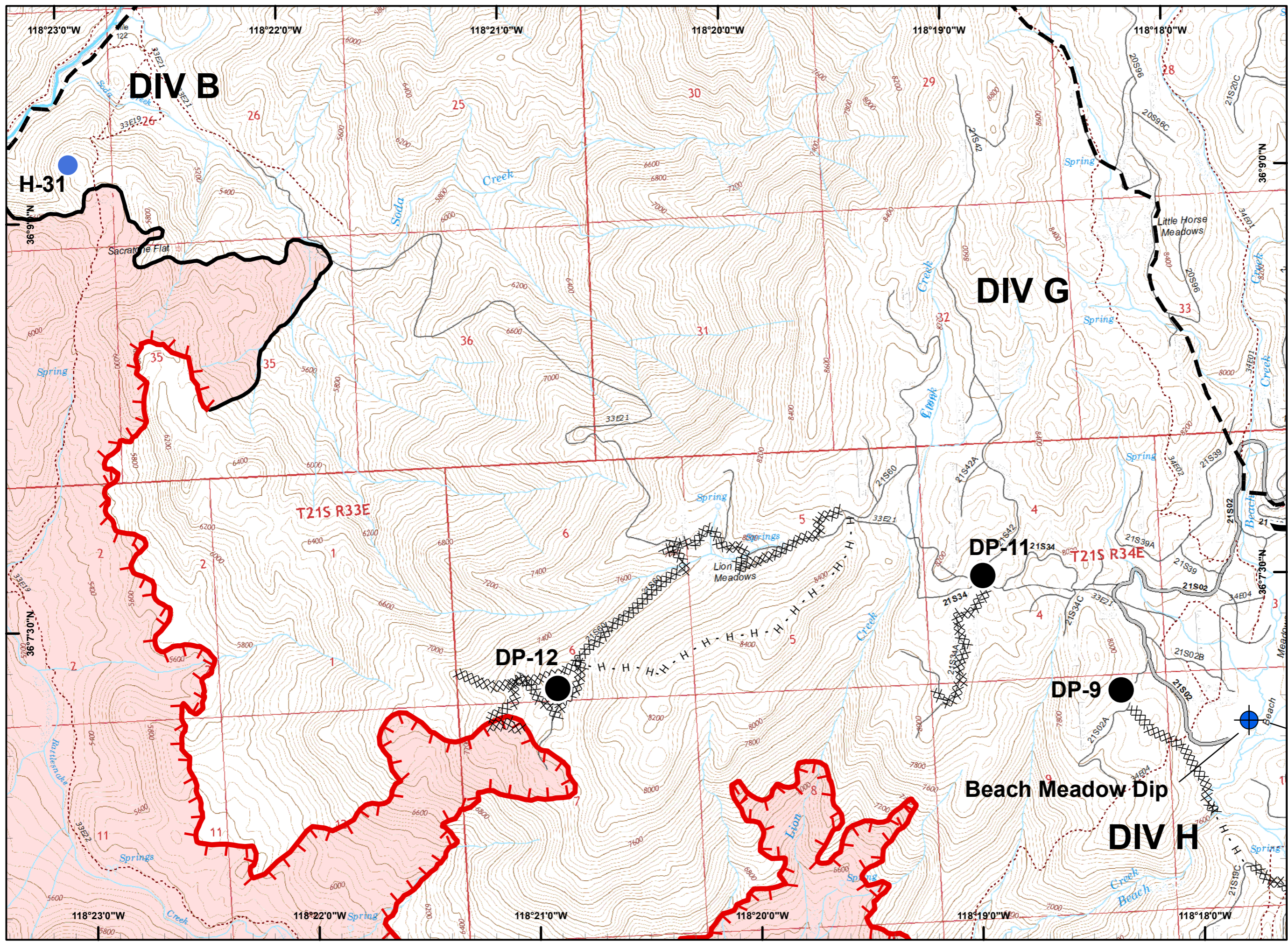




Legend

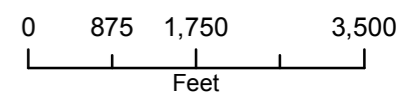
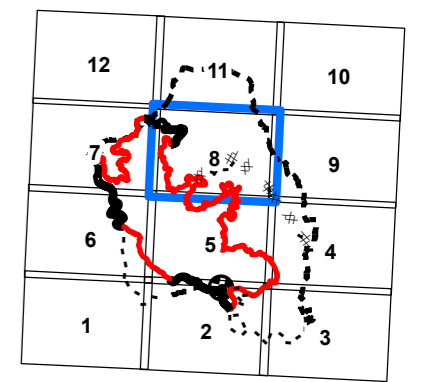
- (X) Division Break
- (R) Repeater
- (C) Camp
- ⊕ Dip Site
- Drop Point
- (H) Helibase
- Helispot
- WX Mobile Weather Unit
- (W) Water Source
- ┌ Uncontrolled Fire Edge
- Completed Line
- H - H Completed Hand Line
- - - Proposed Containment Line
- ┌ Wilderness Boundary

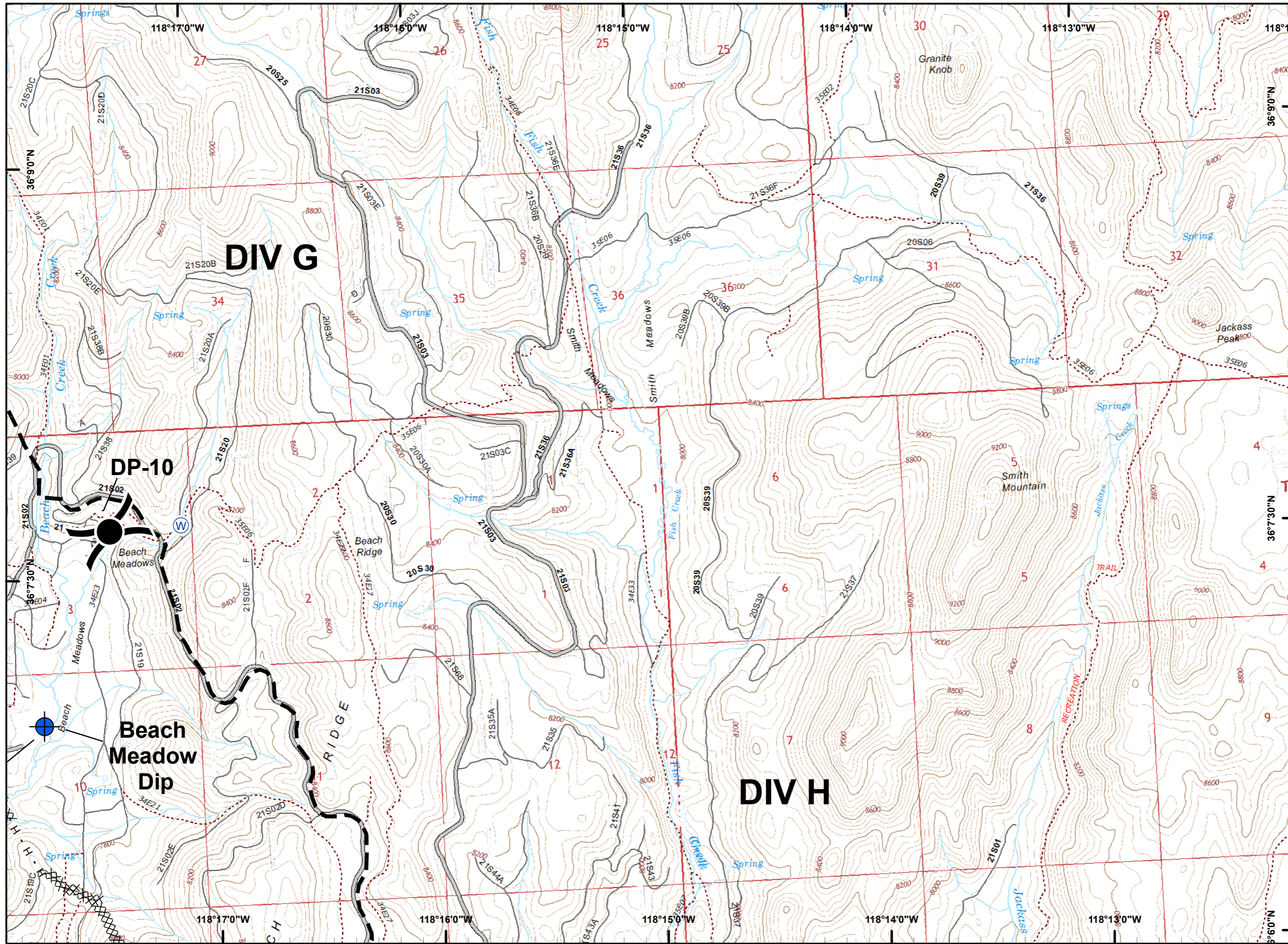




Legend

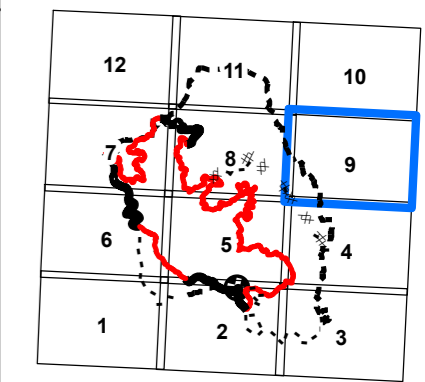
- () Division Break
- (R) Repeater
- (C) Camp
- Dip Site
- Drop Point
- (H) Helibase
- Helispot
- WX Mobile Weather Unit
- (W) Water Source
- ┌ Uncontrolled Fire Edge
- ▬ Completed Line
- H - H Completed Hand Line
- - - Proposed Containment Line
- ▭ Wilderness Boundary





Legend

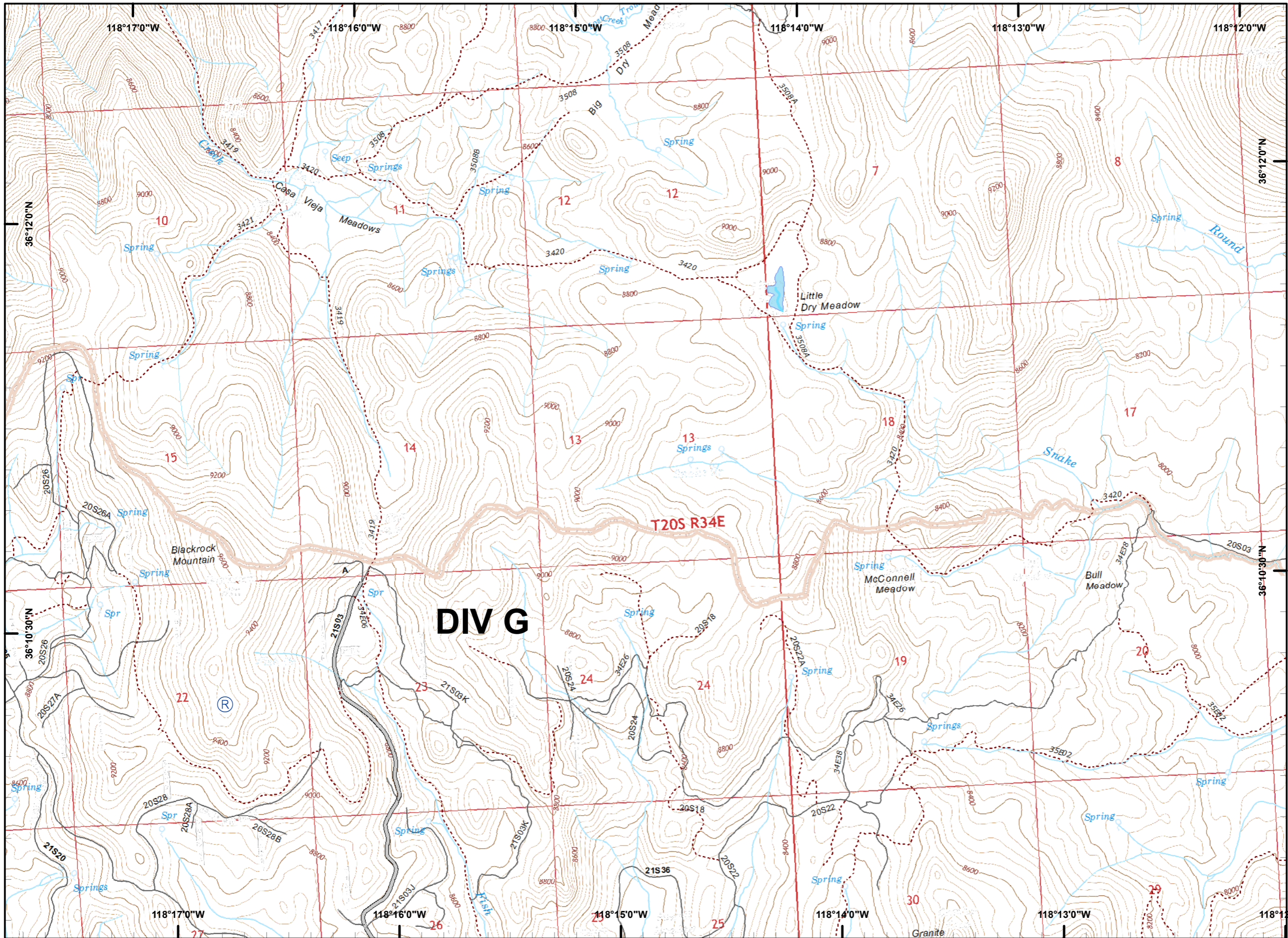
- () Division Break
- (R) Repeater
- (C) Camp
- ⊕ Dip Site
- Drop Point
- (H) Helibase
- Helispot
- WX Mobile Weather Unit
- (W) Water Source
- ┌ Uncontrolled Fire Edge
- ▬ Completed Line
- H - H Completed Hand Line
- - - Proposed Containment Line
- ▭ Wilderness Boundary



PDF Maps

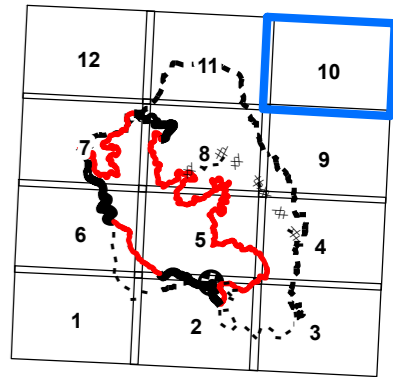
0 875 1,750 3,500
 Feet



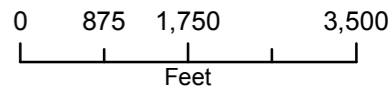


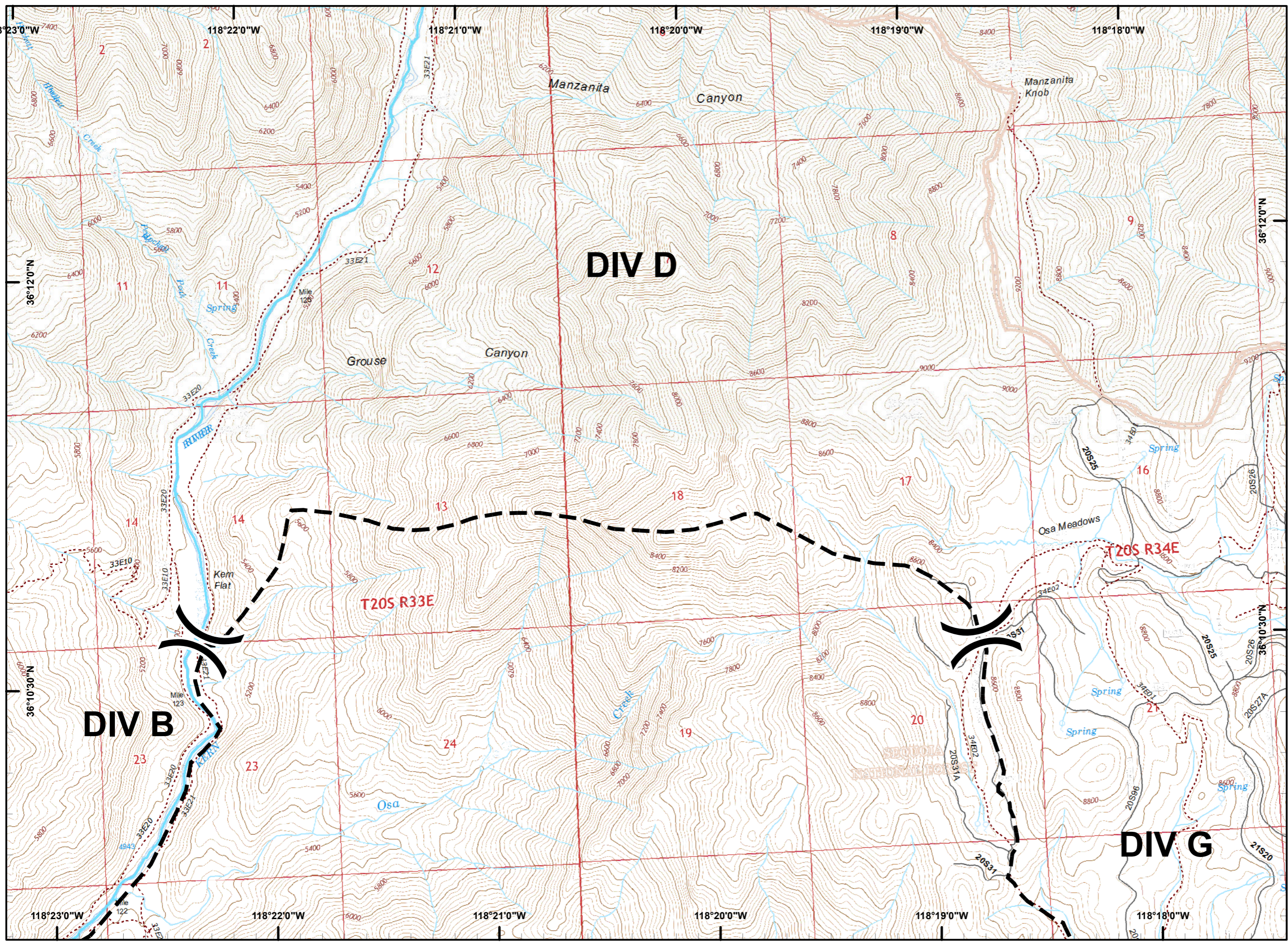
Legend

- () Division Break
- (R) Repeater
- (C) Camp
- ⊕ Dip Site
- Drop Point
- (H) Helibase
- Helispot
- WX Mobile Weather Unit
- (W) Water Source
- Uncontrolled Fire Edge
- Completed Line
- H - H Completed Hand Line
- - - Proposed Containment Line
- ▭ Wilderness Boundary



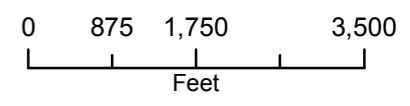
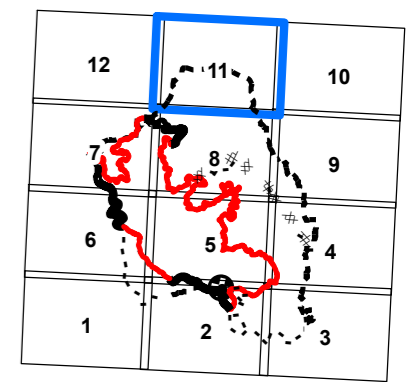
PDF Maps

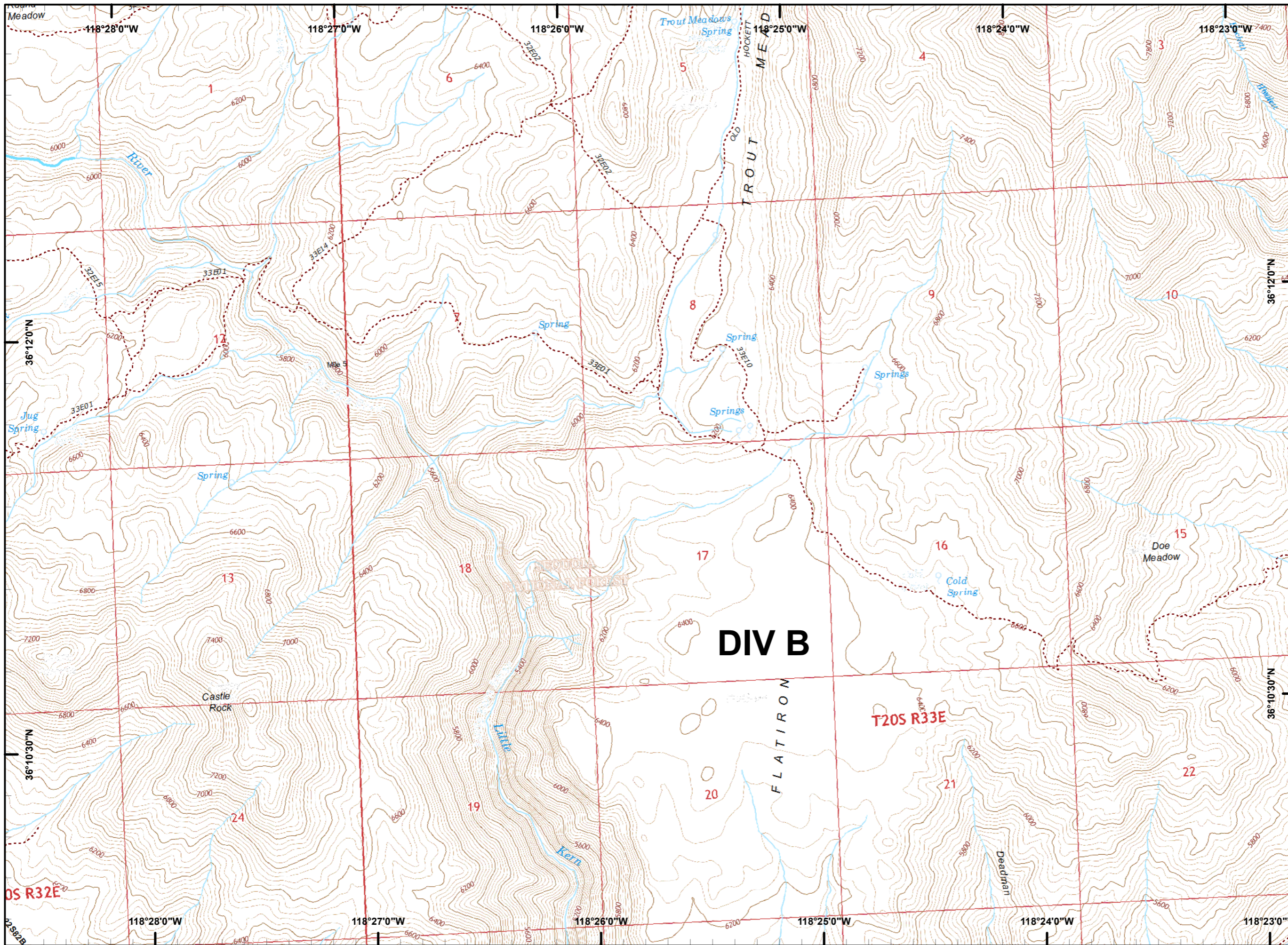




Legend

- () Division Break
- (R) Repeater
- (C) Camp
- ⊕ Dip Site
- Drop Point
- (H) Helibase
- Helispot
- WX Mobile Weather Unit
- (W) Water Source
- ┌ Uncontrolled Fire Edge
- ▬ Completed Line
- H - H Completed Hand Line
- - - Proposed Containment Line
- ▭ Wilderness Boundary





Legend

- () Division Break
- (R) Repeater
- (C) Camp
- ⊕ Dip Site
- Drop Point
- (H) Helibase
- Helispot
- WX Mobile Weather Unit
- (W) Water Source
- ┌ Uncontrolled Fire Edge
- ▬ Completed Line
- H - H Completed Hand Line
- - - Proposed Containment Line
- ▭ Wilderness Boundary

