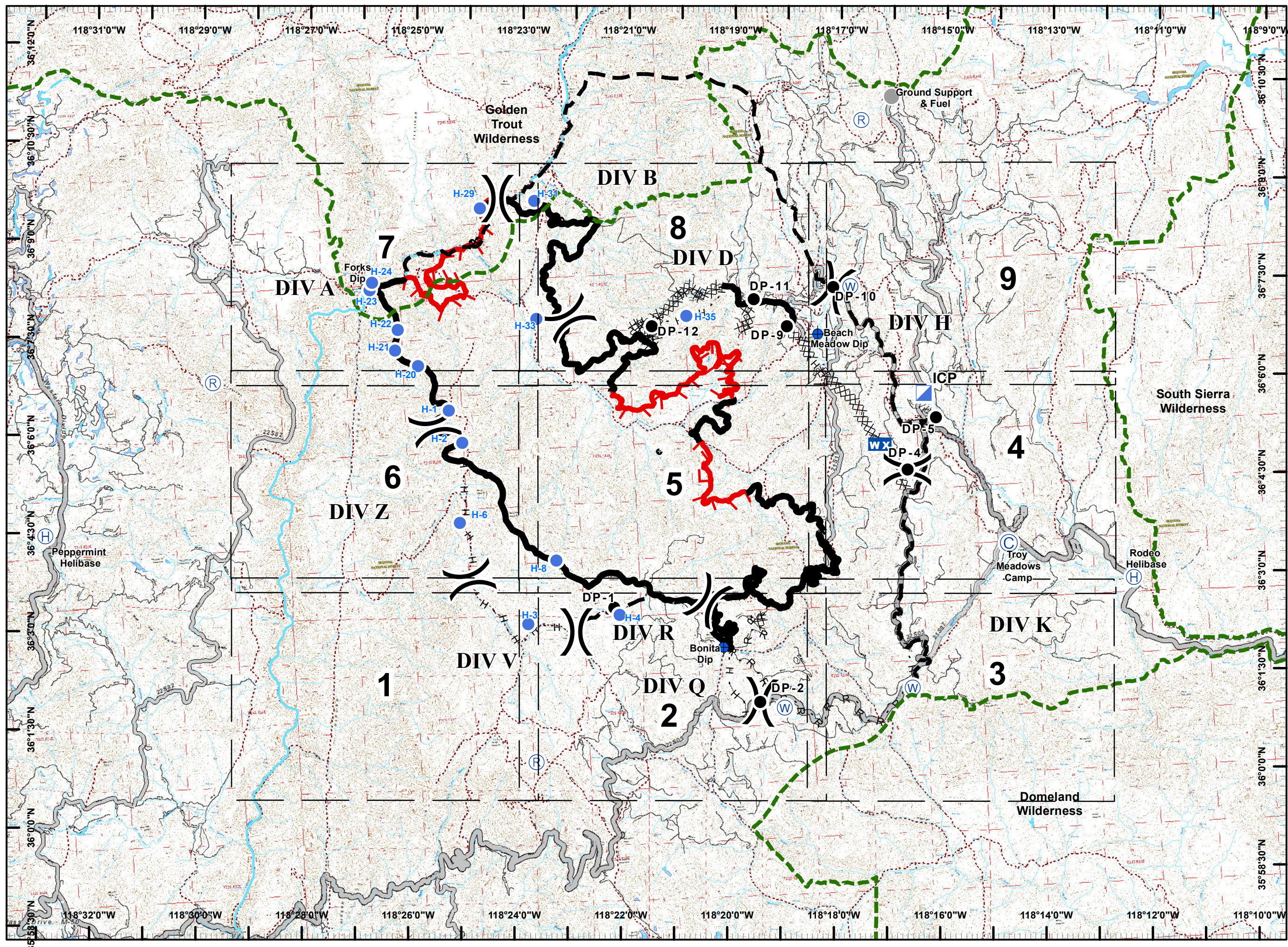
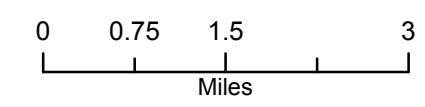
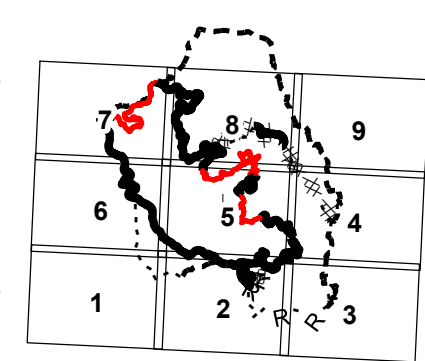
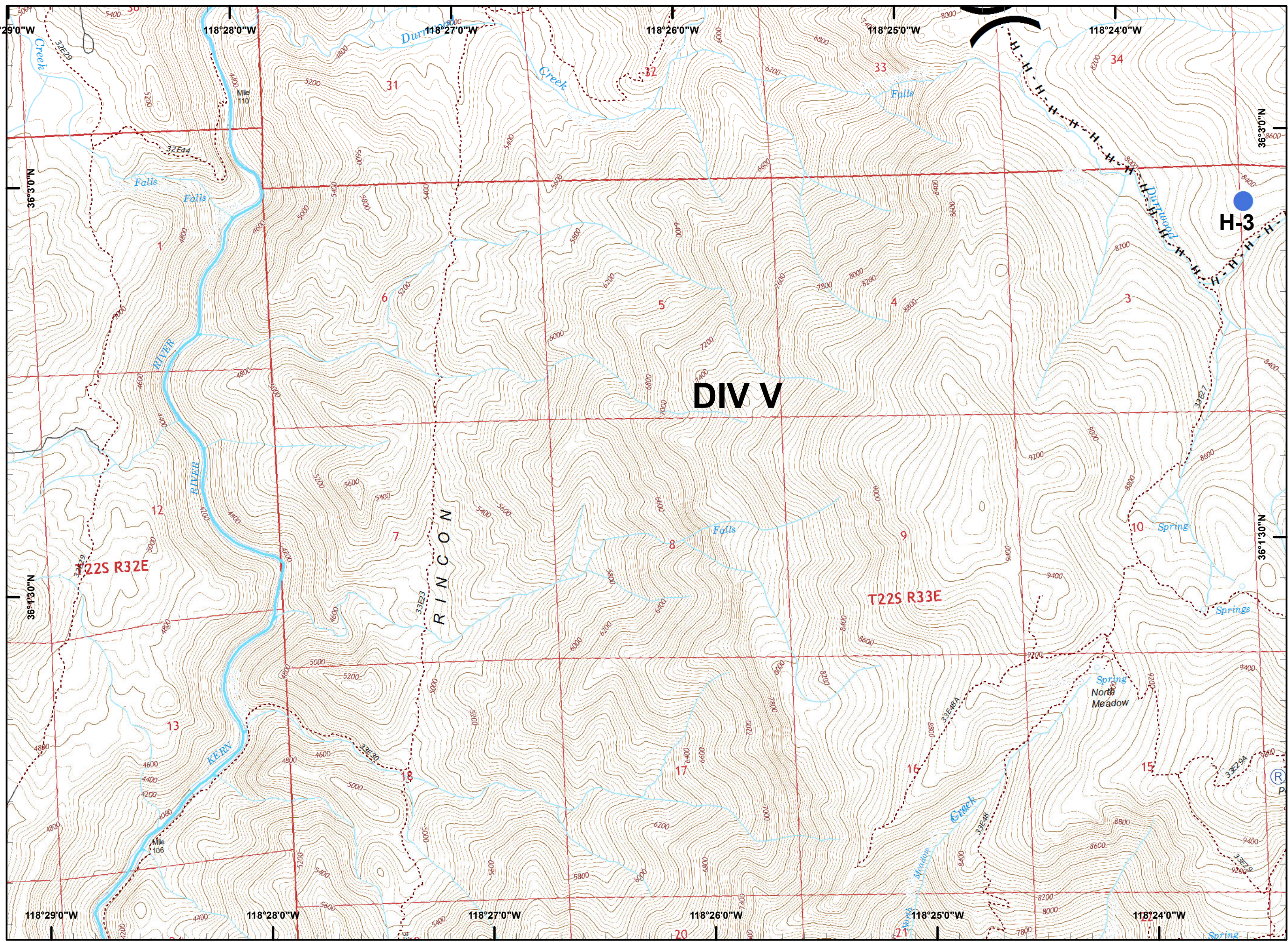


**Schaeffer Fire**  
**CA-SQF-001317**  
**7/15/2017**  
**16,002 Acres**  
**IAP Map**

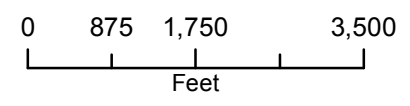
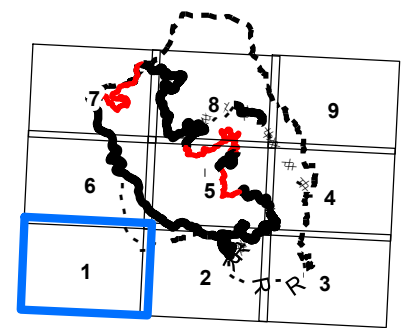
- Legend**
- ( ) Division Break
  - (R) Repeater
  - (C) Camp
  - (D) Dip Site
  - (●) Drop Point
  - (H) Helibase
  - (●) Helispot
  - WX Mobile Weather Unit
  - (W) Water Source
  - Uncontrolled Fire Edge
  - Completed Line
  - H - H Completed Hand Line
  - Proposed Containment Line
  - Wilderness Boundary

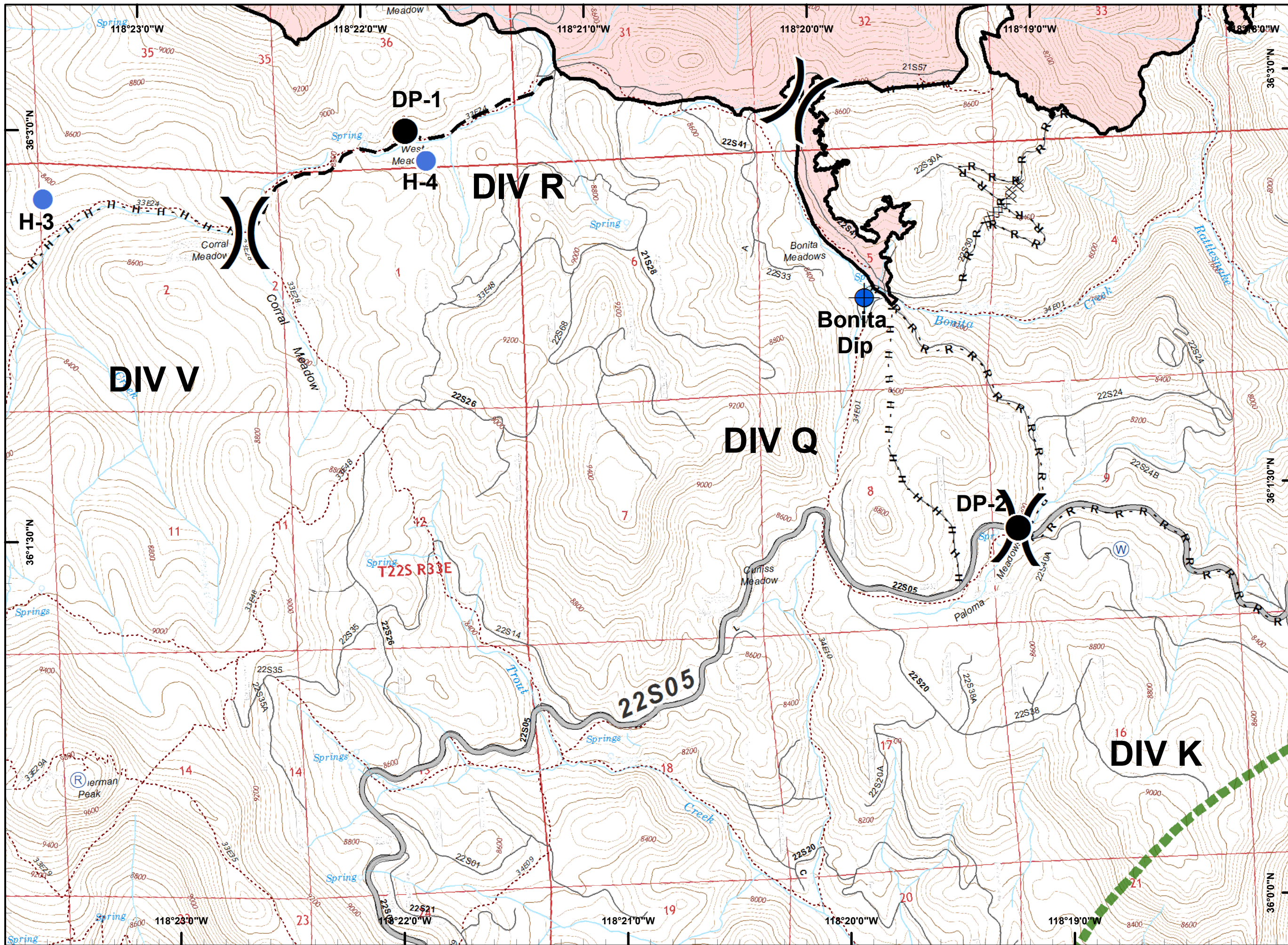




**Legend**

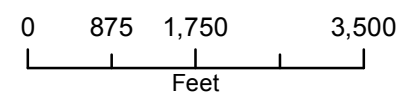
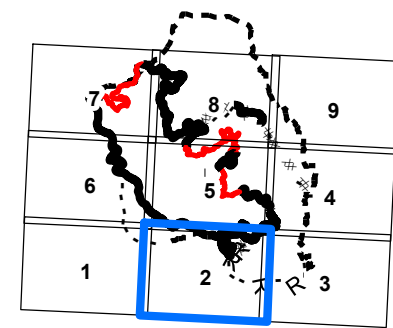
- (X) Division Break
- (R) Repeater
- (C) Camp
- ⊕ Dip Site
- Drop Point
- (H) Helibase
- Helispot
- WX Mobile Weather Unit
- (W) Water Source
- ┌ Uncontrolled Fire Edge
- ▬ Completed Line
- H - H Completed Hand Line
- - - Proposed Containment Line
- ▭ Wilderness Boundary

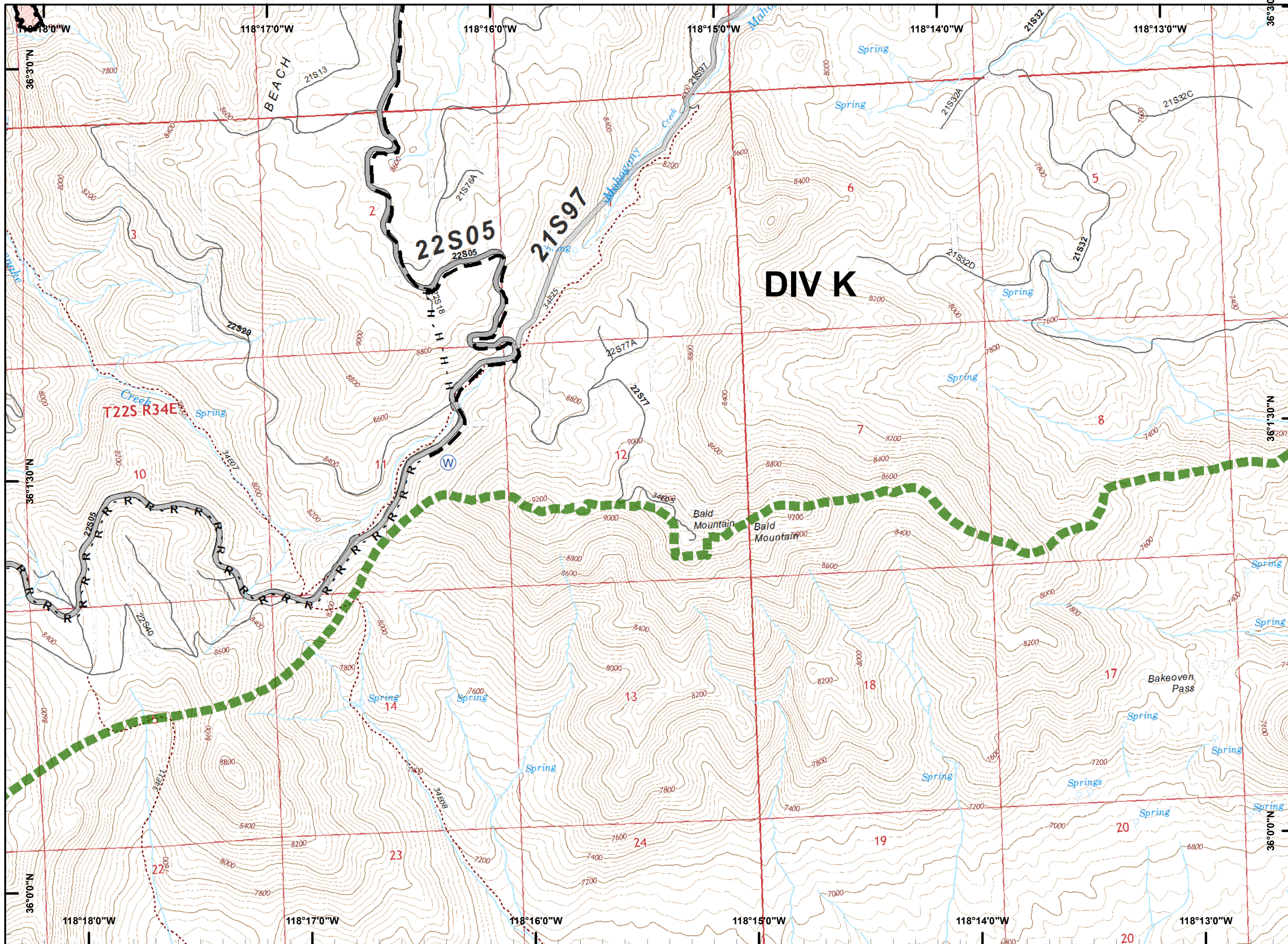




**Legend**

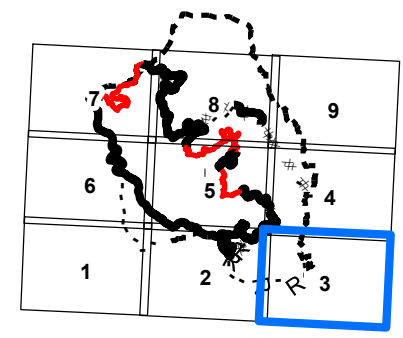
- Division Break
- Repeater
- Camp
- Dip Site
- Drop Point
- Helibase
- Helispot
- Mobile Weather Unit
- Water Source
- Uncontrolled Fire Edge
- Completed Line
- Completed Hand Line
- Proposed Containment Line
- Wilderness Boundary





**Legend**

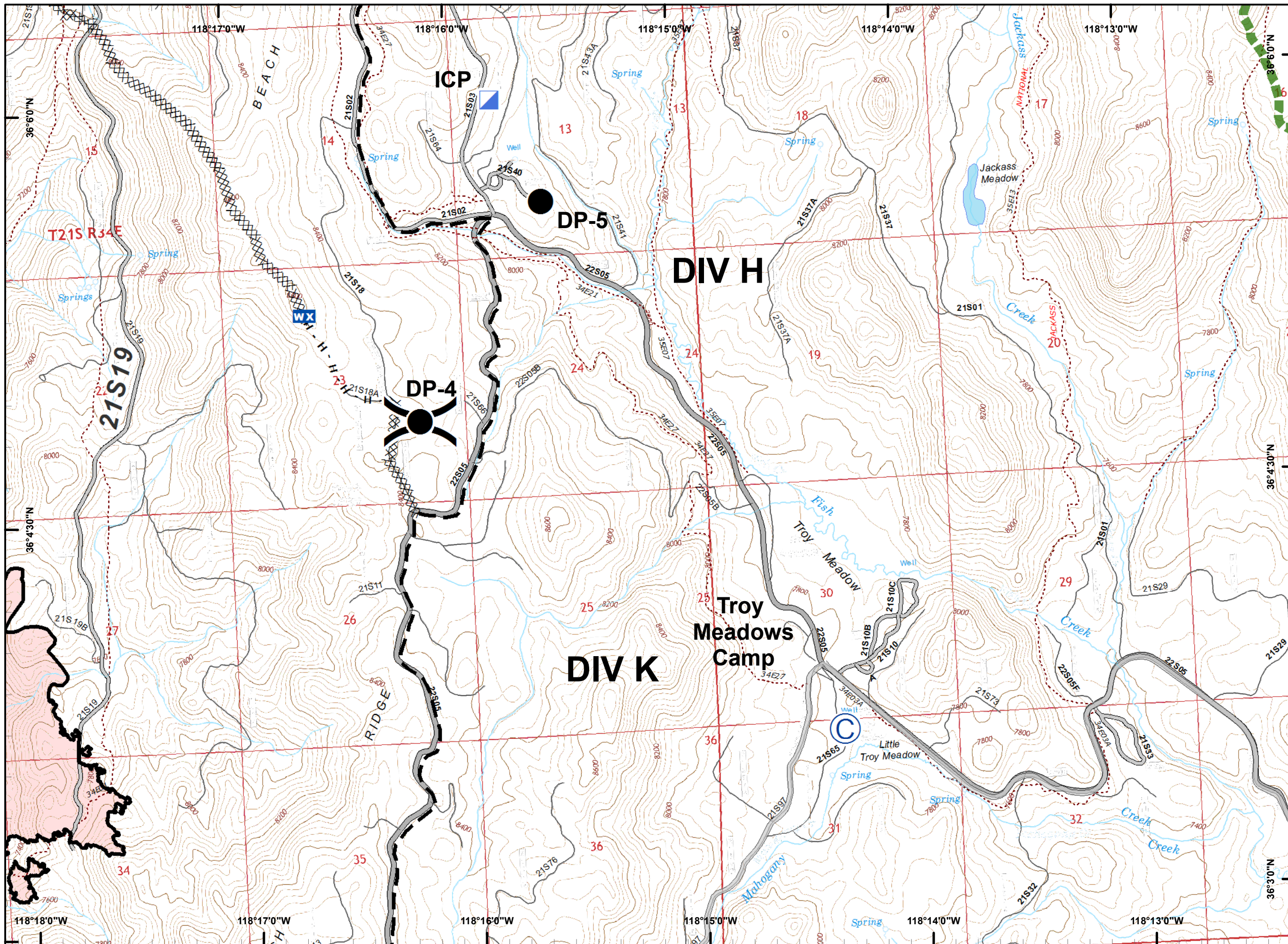
- ( ) Division Break
- (R) Repeater
- (C) Camp
- ⊕ Dip Site
- Drop Point
- (H) Helibase
- Helispot
- WX Mobile Weather Unit
- (W) Water Source
- ┌ Uncontrolled Fire Edge
- ▬ Completed Line
- H - H Completed Hand Line
- - - Proposed Containment Line
- ▬ Wilderness Boundary



PDF Maps

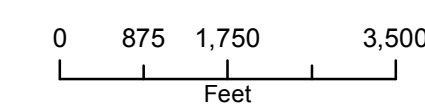
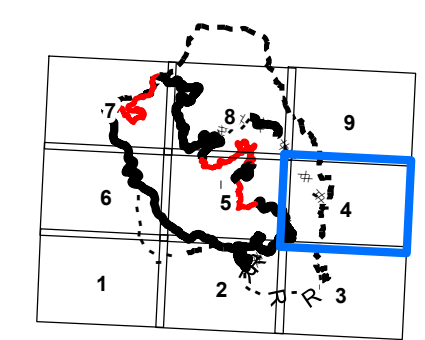
0 875 1,750 3,500  
 Feet

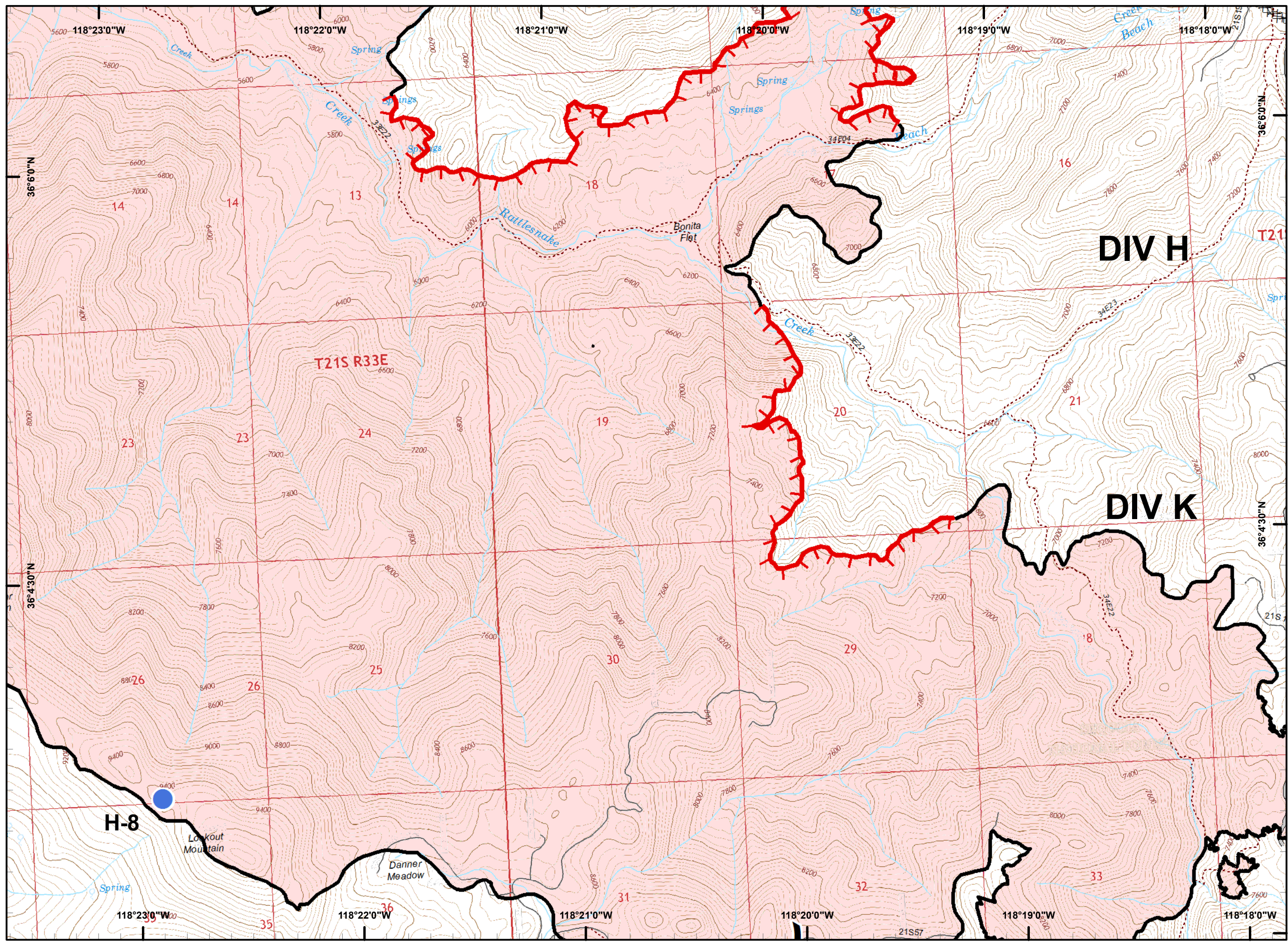




**Legend**

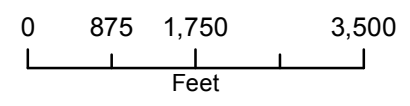
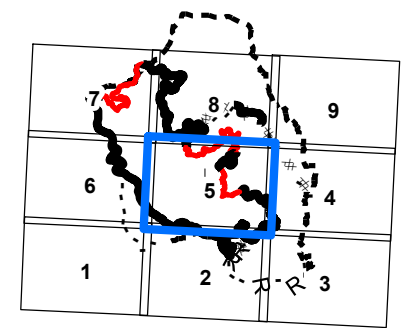
- (X) Division Break
- (R) Repeater
- (C) Camp
- ⊕ Dip Site
- Drop Point
- (H) Helibase
- Helispot
- Wx Mobile Weather Unit
- (W) Water Source
- ┌ Uncontrolled Fire Edge
- ▬ Completed Line
- H - H Completed Hand Line
- ▬ Proposed Containment Line
- ▭ Wilderness Boundary

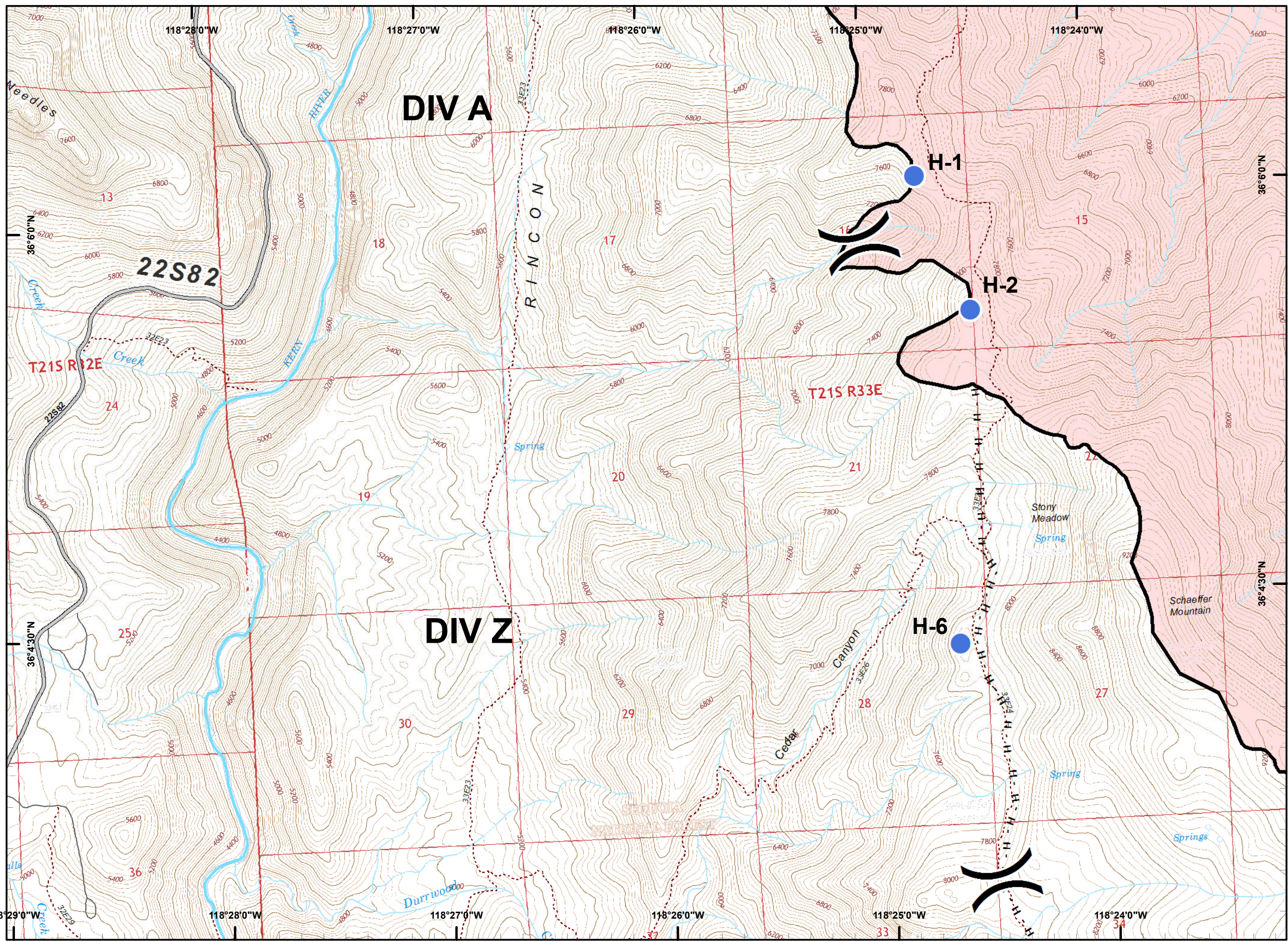




**Legend**

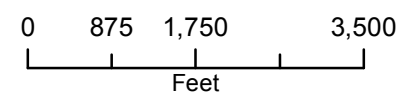
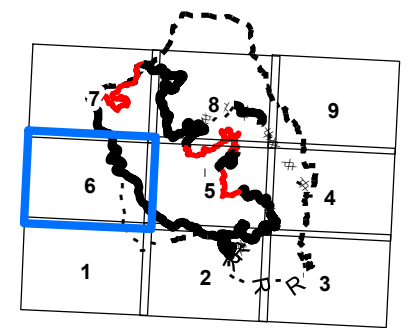
- ( ) Division Break
- (R) Repeater
- (C) Camp
- ⊕ Dip Site
- Drop Point
- (H) Helibase
- Helispot
- WX Mobile Weather Unit
- (W) Water Source
- └─┘ Uncontrolled Fire Edge
- Completed Line
- H - H Completed Hand Line
- - - Proposed Containment Line
- ▭ Wilderness Boundary

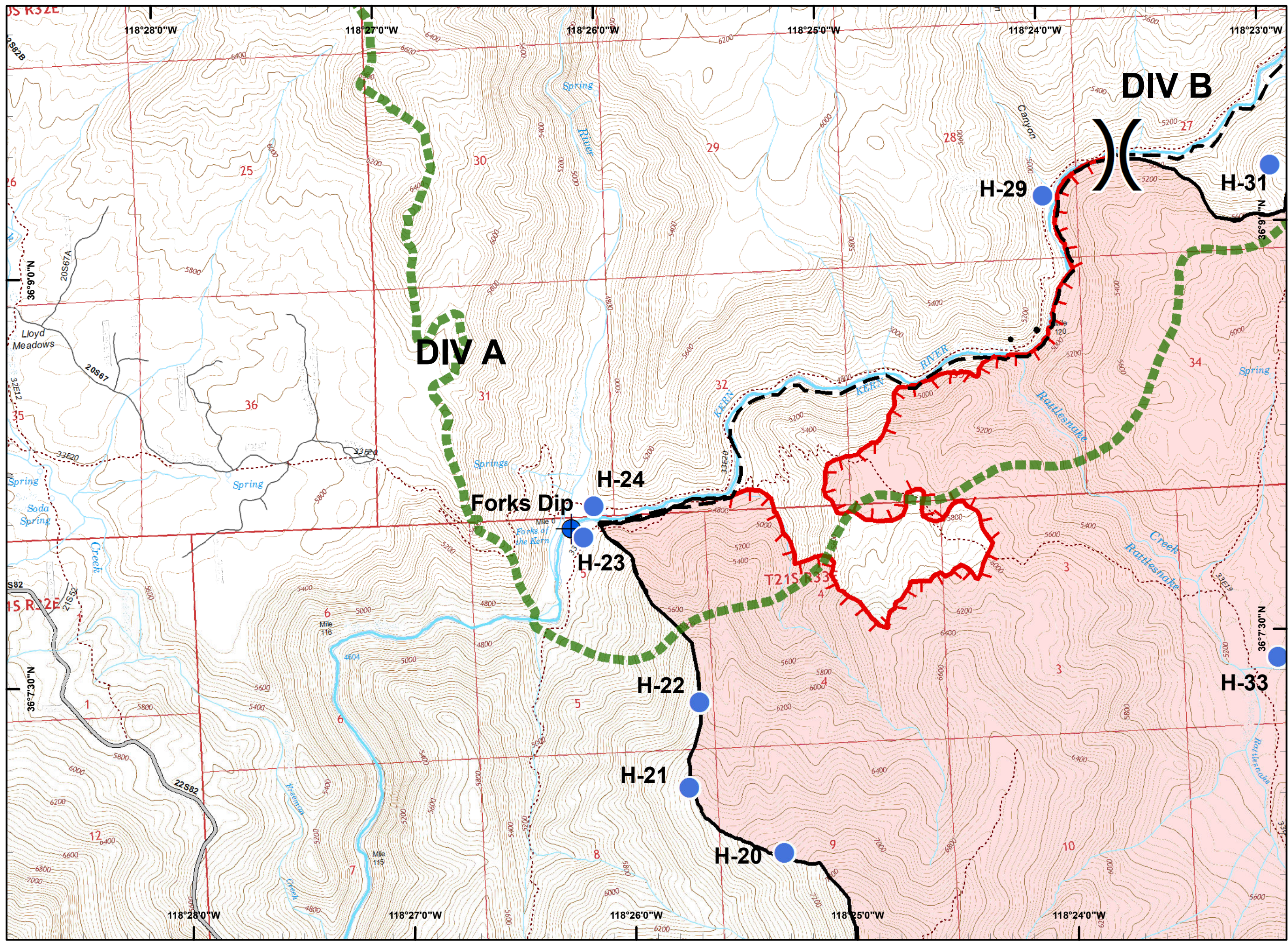




**Legend**

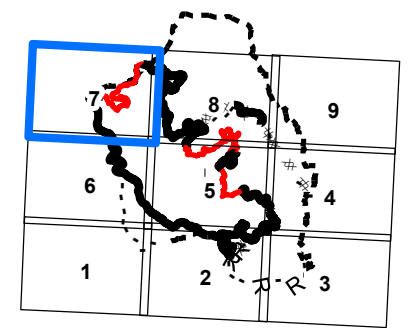
- (X) Division Break
- (R) Repeater
- (C) Camp
- Dip Site
- Drop Point
- (H) Helibase
- Helispot
- WX Mobile Weather Unit
- (W) Water Source
- T Uncontrolled Fire Edge
- Completed Line
- H - H Completed Hand Line
- - - Proposed Containment Line
- ▭ Wilderness Boundary





**Legend**

- ( ) Division Break
- (R) Repeater
- (C) Camp
- ⊕ Dip Site
- Drop Point
- (H) Helibase
- Helispot
- WX Mobile Weather Unit
- (W) Water Source
- ┌ Uncontrolled Fire Edge
- Completed Line
- H - H Completed Hand Line
- - - Proposed Containment Line
- ┌ Wilderness Boundary

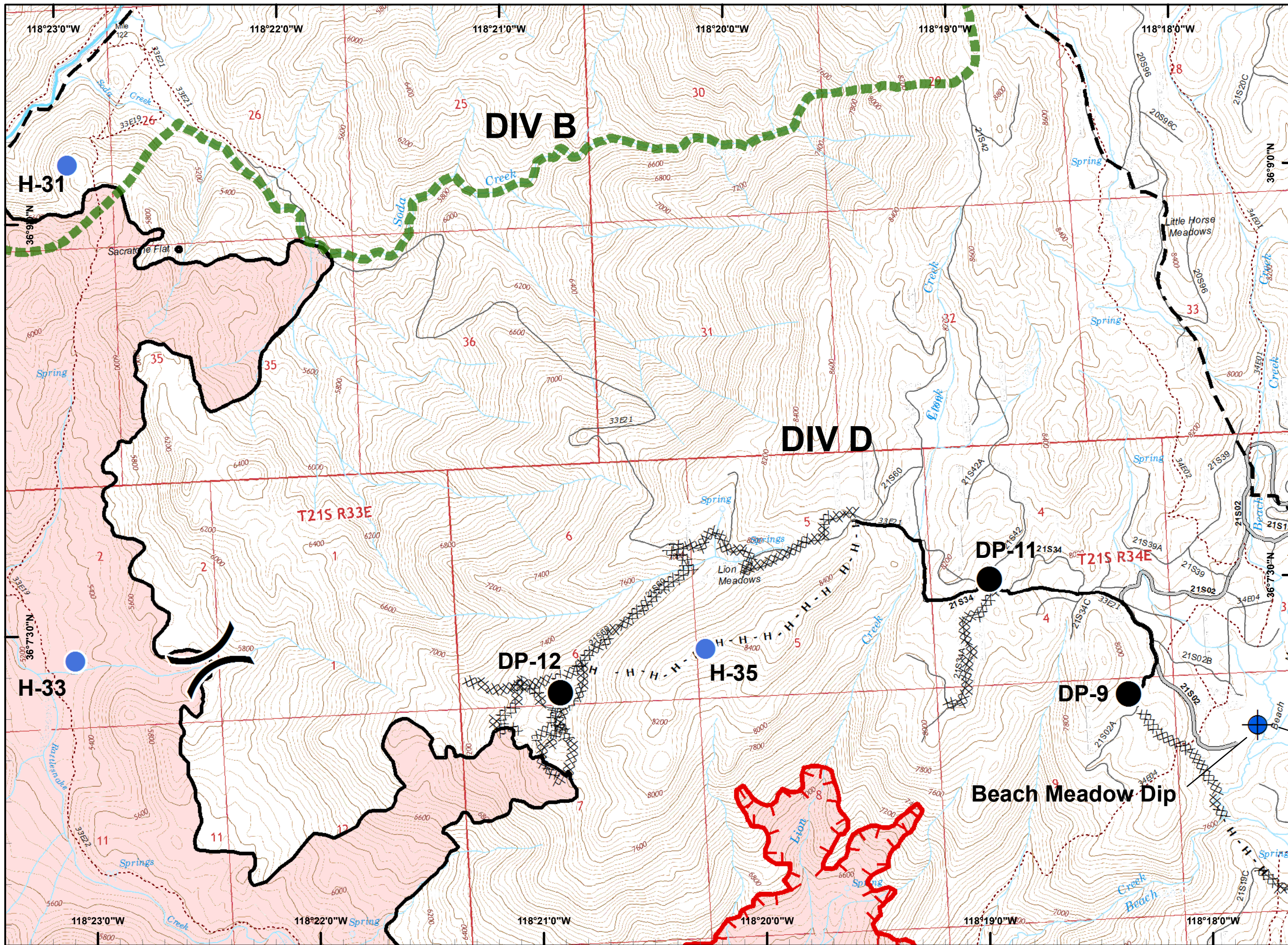


PDF Maps

0 875 1,750 3,500  
 Feet

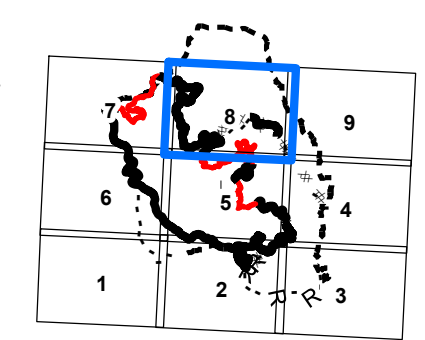






**Legend**

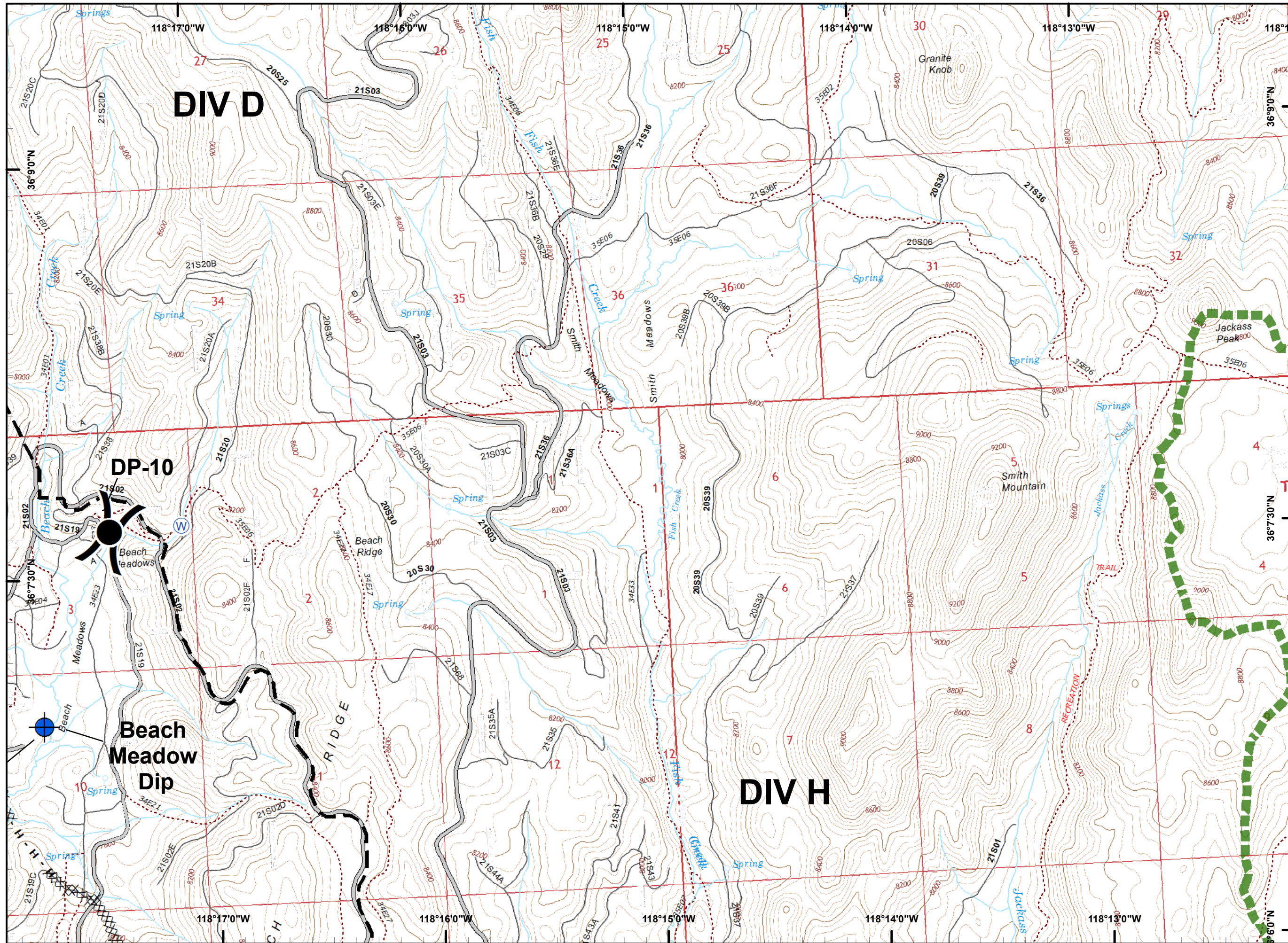
- (X) Division Break
- (R) Repeater
- (C) Camp
- Dip Site
- Drop Point
- (H) Helibase
- Helispot
- WX Mobile Weather Unit
- (W) Water Source
- Uncontrolled Fire Edge
- Completed Line
- H - H Completed Hand Line
- Proposed Containment Line
- Wilderness Boundary



PDF Maps

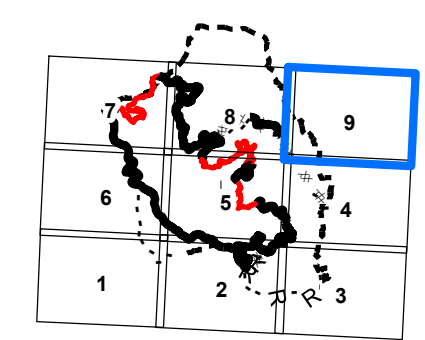
0 875 1,750 3,500  
 Feet





**Legend**

- ( ) Division Break
- (R) Repeater
- (C) Camp
- ⊕ Dip Site
- Drop Point
- (H) Helibase
- Helispot
- WX Mobile Weather Unit
- (W) Water Source
- ┌ Uncontrolled Fire Edge
- Completed Line
- H - H Completed Hand Line
- - - Proposed Containment Line
- ▬ Wilderness Boundary



PDF Maps

0 875 1,750 3,500  
 Feet

