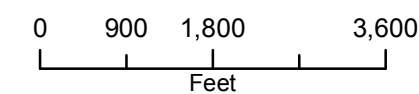
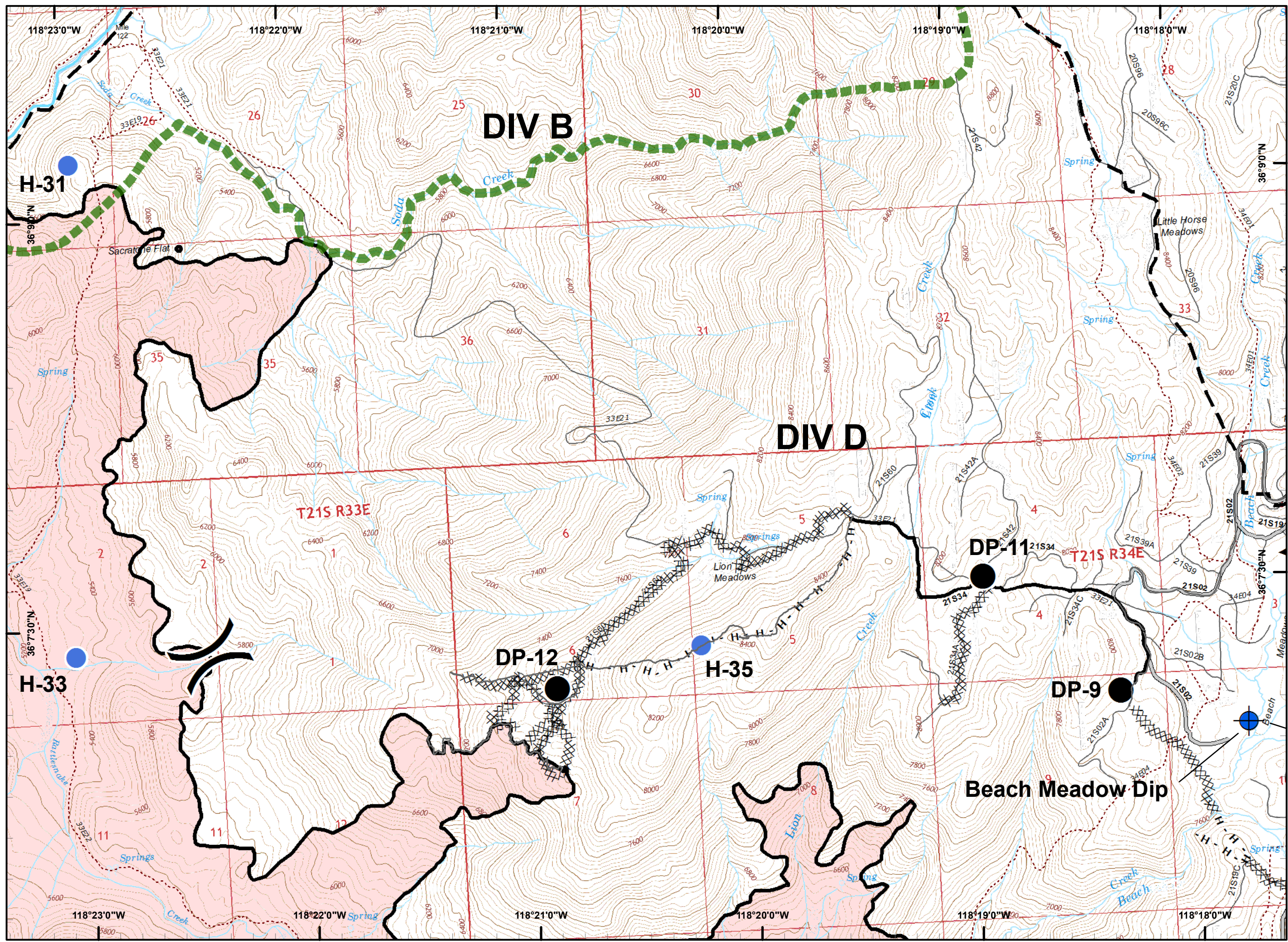


**Legend**

- ( ) Division Break
- (R) Repeater
- (C) Camp
- ⊕ Dip Site
- Drop Point
- (H) Helibase
- Helispot
- WX Mobile Weather Unit
- (W) Water Source
- ┌ Uncontrolled Fire Edge
- Completed Line
- - - Completed Hand Line
- - - Proposed Containment Line
- ┌ Wilderness Boundary

|   |   |   |
|---|---|---|
| 7 | 8 | 9 |
| 6 | 5 | 4 |
| 1 | 2 | 3 |





**Legend**

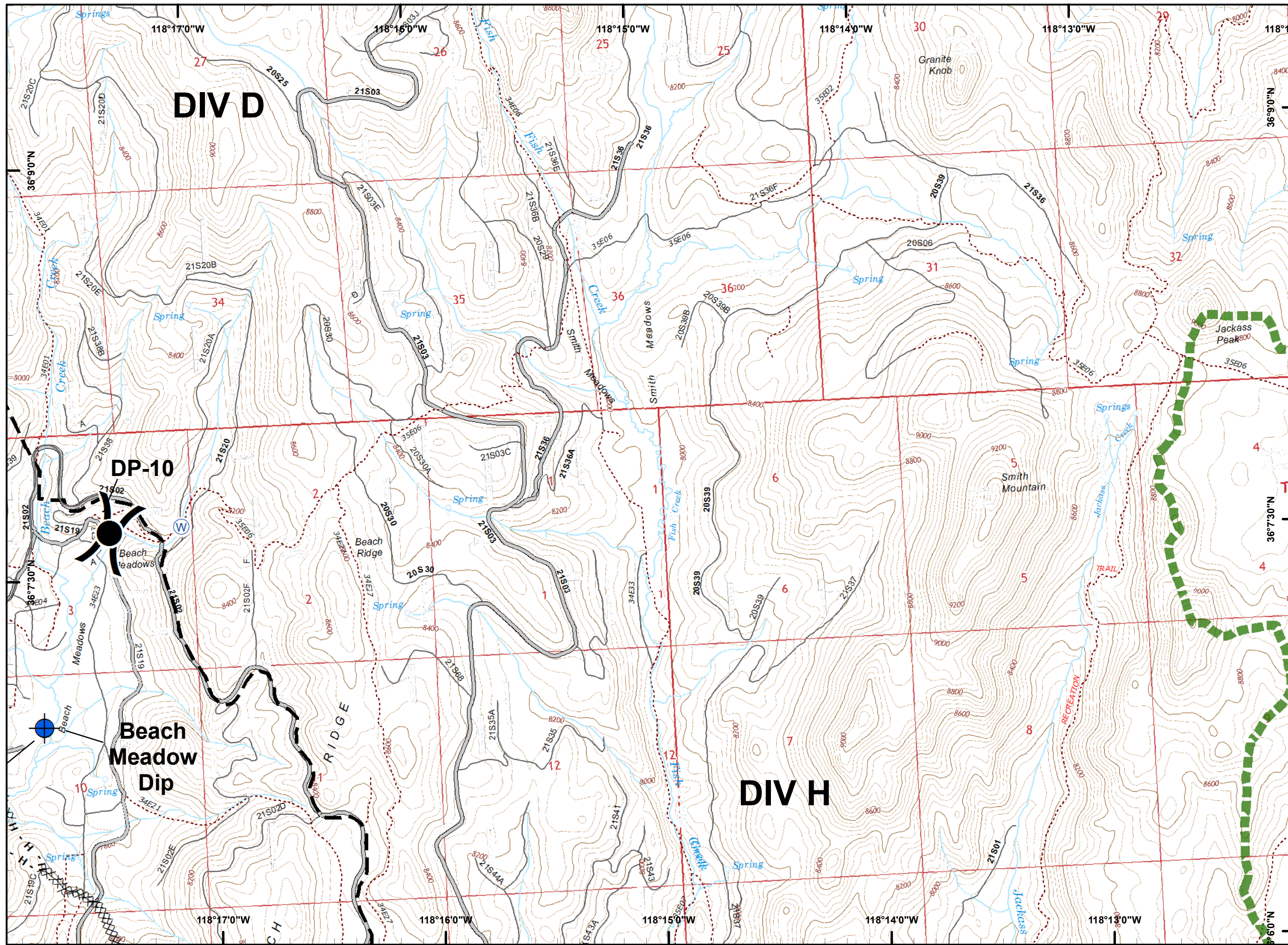
- ( ) Division Break
- (R) Repeater
- (C) Camp
- Dip Site
- Drop Point
- (H) Helibase
- Helispot
- WX Mobile Weather Unit
- (W) Water Source
- Uncontrolled Fire Edge
- Completed Line
- H - H Completed Hand Line
- Proposed Containment Line
- Wilderness Boundary

|   |   |   |
|---|---|---|
| 7 | 8 | 9 |
| 6 | 5 | 4 |
| 1 | 2 | 3 |

PDF Maps

0 900 1,800 3,600  
Feet





**Legend**

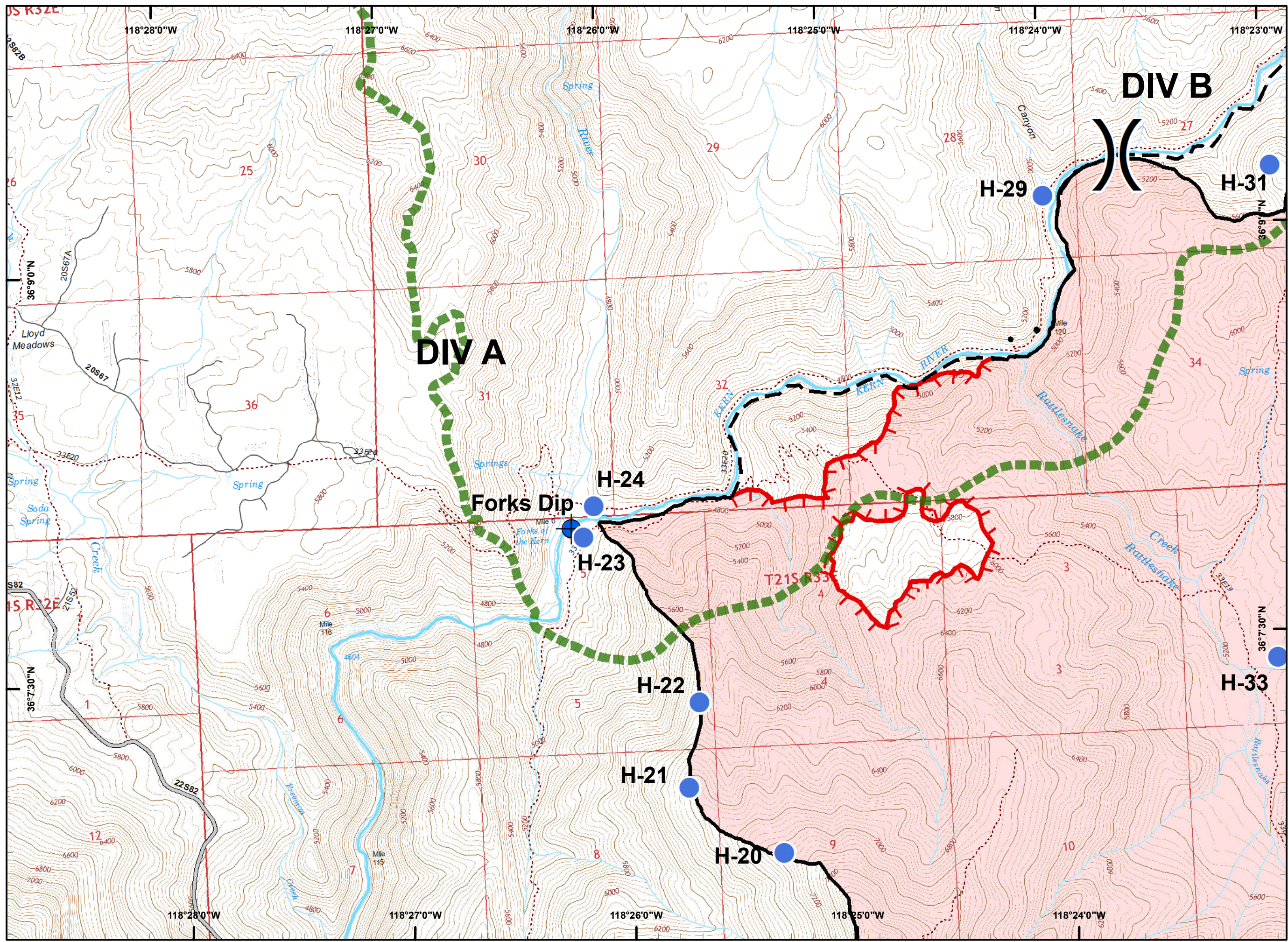
- ( ) Division Break
- (R) Repeater
- (C) Camp
- ⊕ Dip Site
- Drop Point
- (H) Helibase
- Helispot
- WX Mobile Weather Unit
- (W) Water Source
- ┌ Uncontrolled Fire Edge
- Completed Line
- H - H Completed Hand Line
- - - Proposed Containment Line
- ┌ Wilderness Boundary

|   |   |   |
|---|---|---|
| 7 | 8 | 9 |
| 6 | 5 | 4 |
| 1 | 2 | 3 |

PDF Maps

0 900 1,800 3,600  
Feet





**Legend**

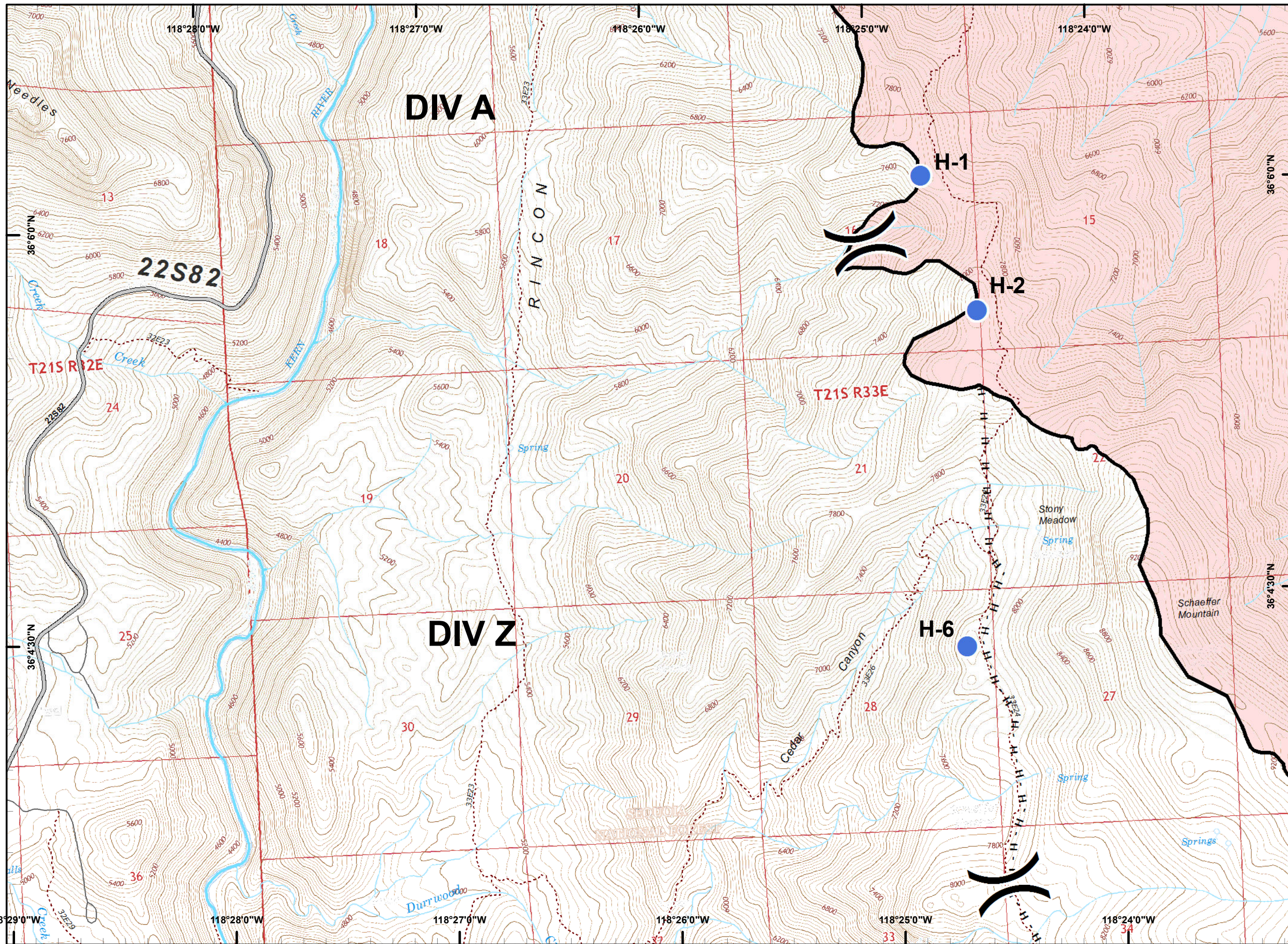
- ( ) Division Break
- (R) Repeater
- (C) Camp
- Dip Site
- Drop Point
- (H) Helibase
- Helispot
- WX Mobile Weather Unit
- (W) Water Source
- ┌ Uncontrolled Fire Edge
- Completed Line
- H - H Completed Hand Line
- - - Proposed Containment Line
- ┌ Wilderness Boundary

|   |   |   |
|---|---|---|
| 7 | 8 | 9 |
| 6 | 5 | 4 |
| 1 | 2 | 3 |

PDF Maps

0 900 1,800 3,600  
Feet

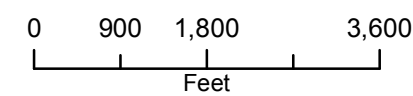


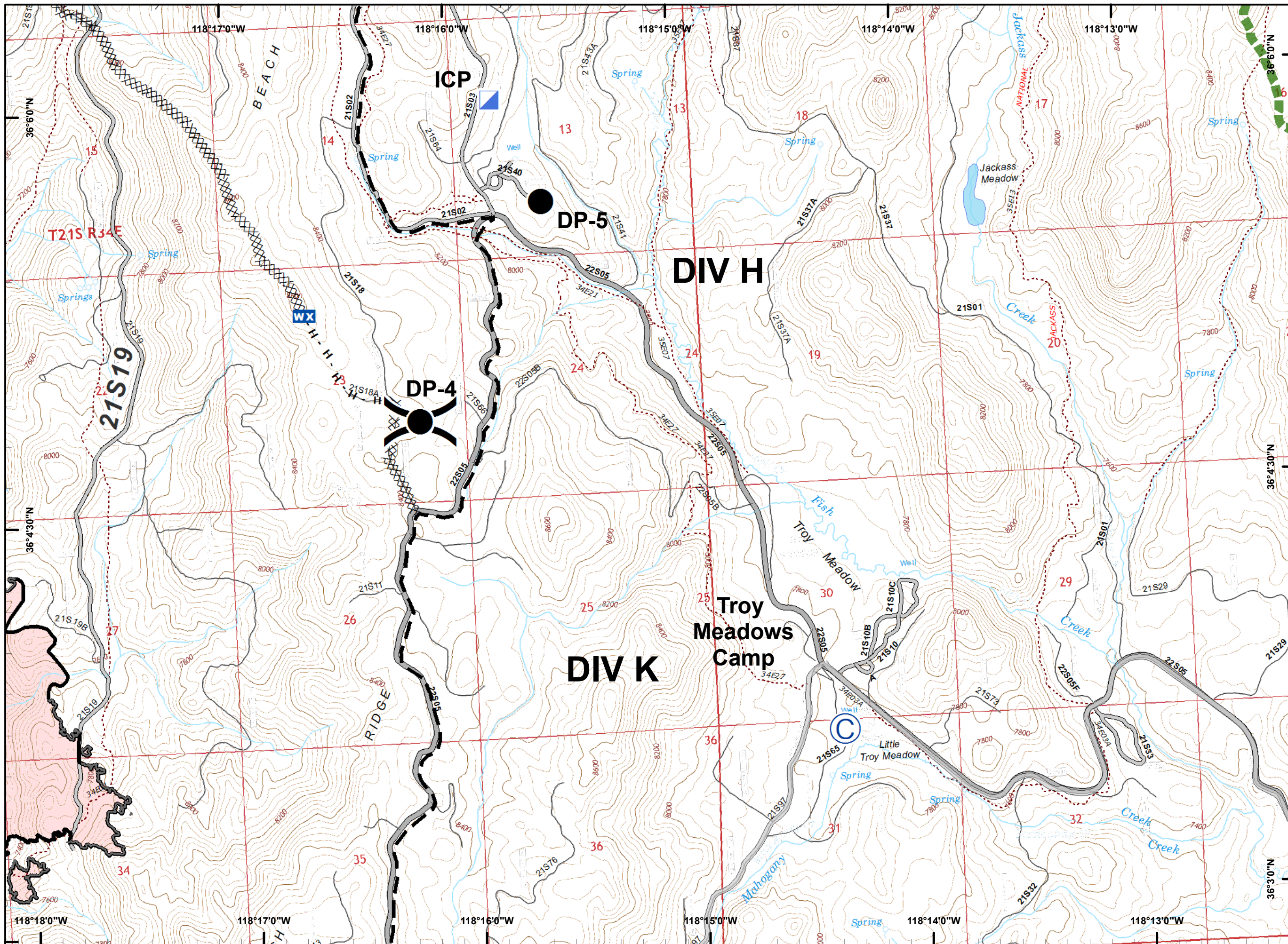


**Legend**

- (X) Division Break
- (R) Repeater
- (C) Camp
- Dip Site
- Drop Point
- (H) Helibase
- Helispot
- WX Mobile Weather Unit
- (W) Water Source
- Uncontrolled Fire Edge
- Completed Line
- H - H Completed Hand Line
- Proposed Containment Line
- Wilderness Boundary

|   |   |   |
|---|---|---|
| 7 | 8 | 9 |
| 6 | 5 | 4 |
| 1 | 2 | 3 |

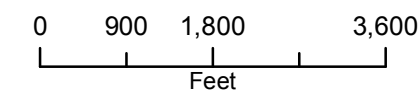


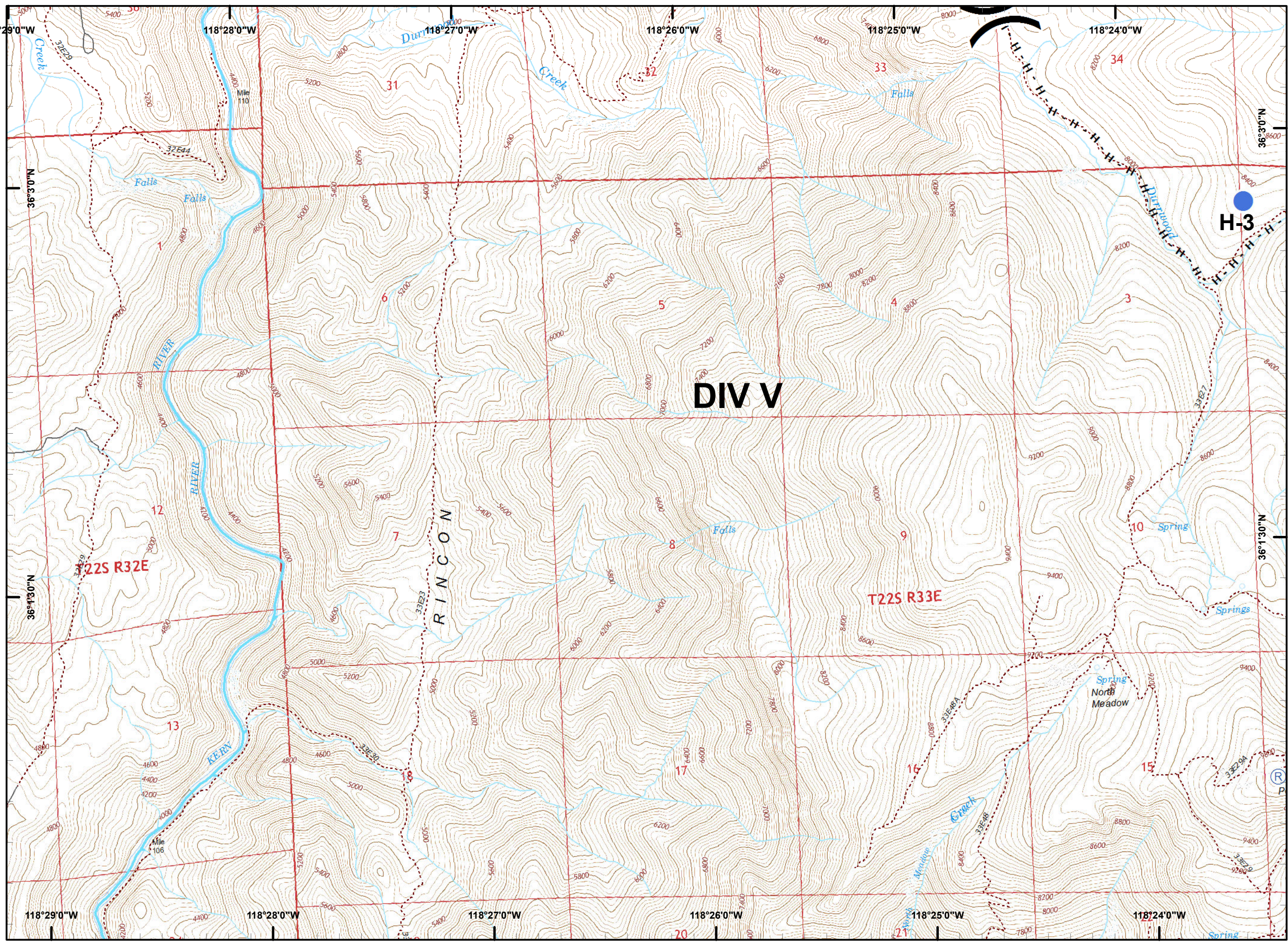


**Legend**

- (X) Division Break
- (R) Repeater
- (C) Camp
- ⊕ Dip Site
- Drop Point
- (H) Helibase
- Helispot
- WX Mobile Weather Unit
- (W) Water Source
- ┌ Uncontrolled Fire Edge
- ▬ Completed Line
- H - H Completed Hand Line
- - - Proposed Containment Line
- ▭ Wilderness Boundary

|   |   |   |
|---|---|---|
| 7 | 8 | 9 |
| 6 | 5 | 4 |
| 1 | 2 | 3 |

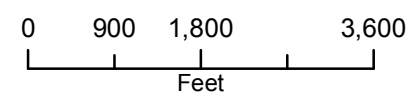


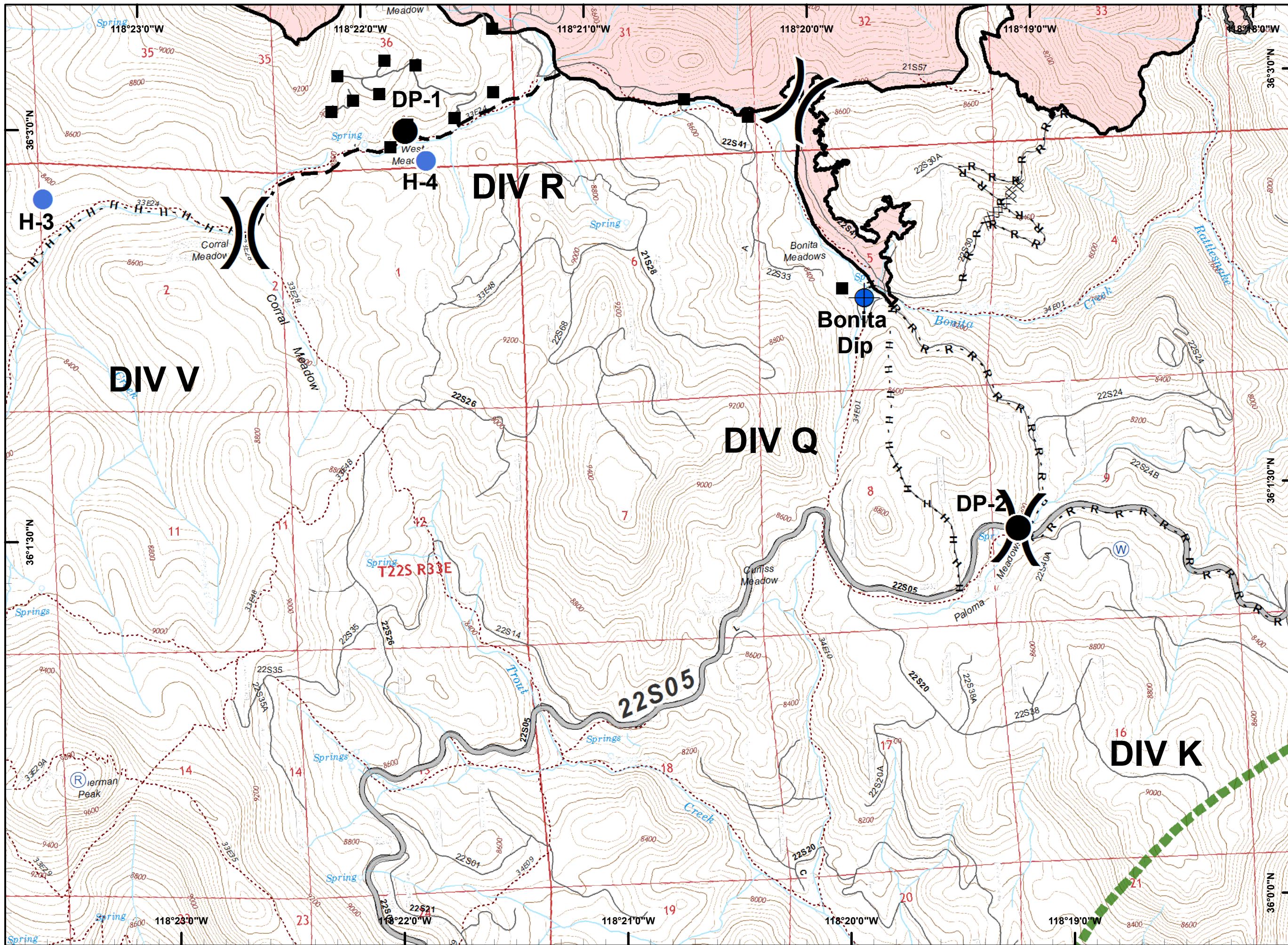


**Legend**

- (X) Division Break
- (R) Repeater
- (C) Camp
- Dip Site
- Drop Point
- (H) Helibase
- Helispot
- WX Mobile Weather Unit
- (W) Water Source
- Uncontrolled Fire Edge
- Completed Line
- H - H Completed Hand Line
- Proposed Containment Line
- Wilderness Boundary

|   |   |   |
|---|---|---|
| 7 | 8 | 9 |
| 6 | 5 | 4 |
| 1 | 2 | 3 |

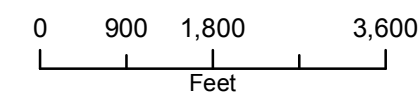




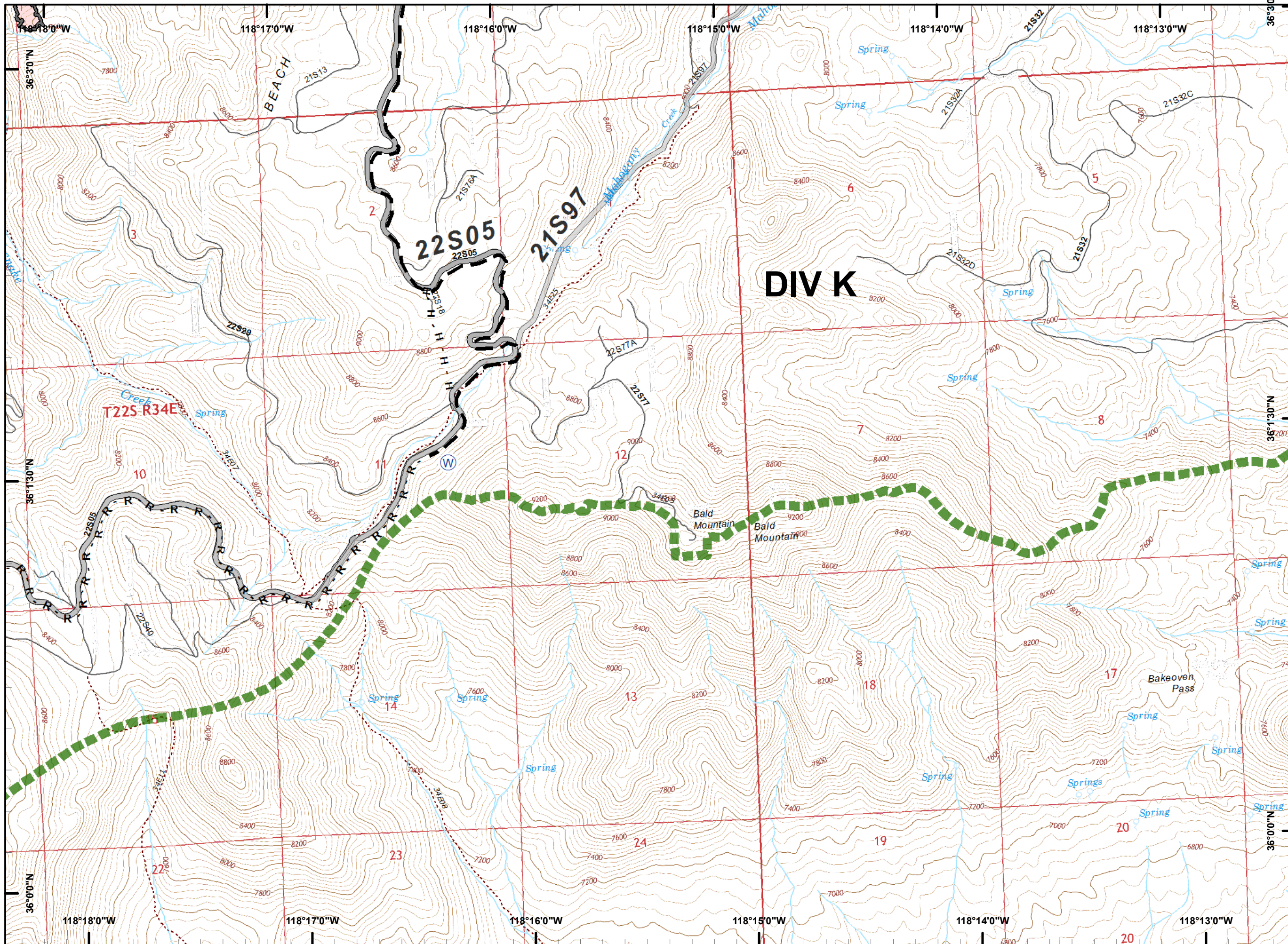
**Legend**

- Division Break
- Repeater
- Camp
- Dip Site
- Drop Point
- Helibase
- Helispot
- Mobile Weather Unit
- Water Source
- Uncontrolled Fire Edge
- Completed Line
- Completed Hand Line
- Proposed Containment Line
- Wilderness Boundary

|   |   |   |
|---|---|---|
| 7 | 8 | 9 |
| 6 | 5 | 4 |
| 1 | 2 | 3 |







**Legend**

- ( ) Division Break
- (R) Repeater
- (C) Camp
- ⊕ Dip Site
- Drop Point
- (H) Helibase
- Helispot
- WX Mobile Weather Unit
- (W) Water Source
- ┌ Uncontrolled Fire Edge
- ▬ Completed Line
- H - H Completed Hand Line
- - - Proposed Containment Line
- ▬ Wilderness Boundary

|   |   |   |
|---|---|---|
| 7 | 8 | 9 |
| 6 | 5 | 4 |
| 1 | 2 | 3 |

PDF Maps

0 900 1,800 3,600  
 Feet

