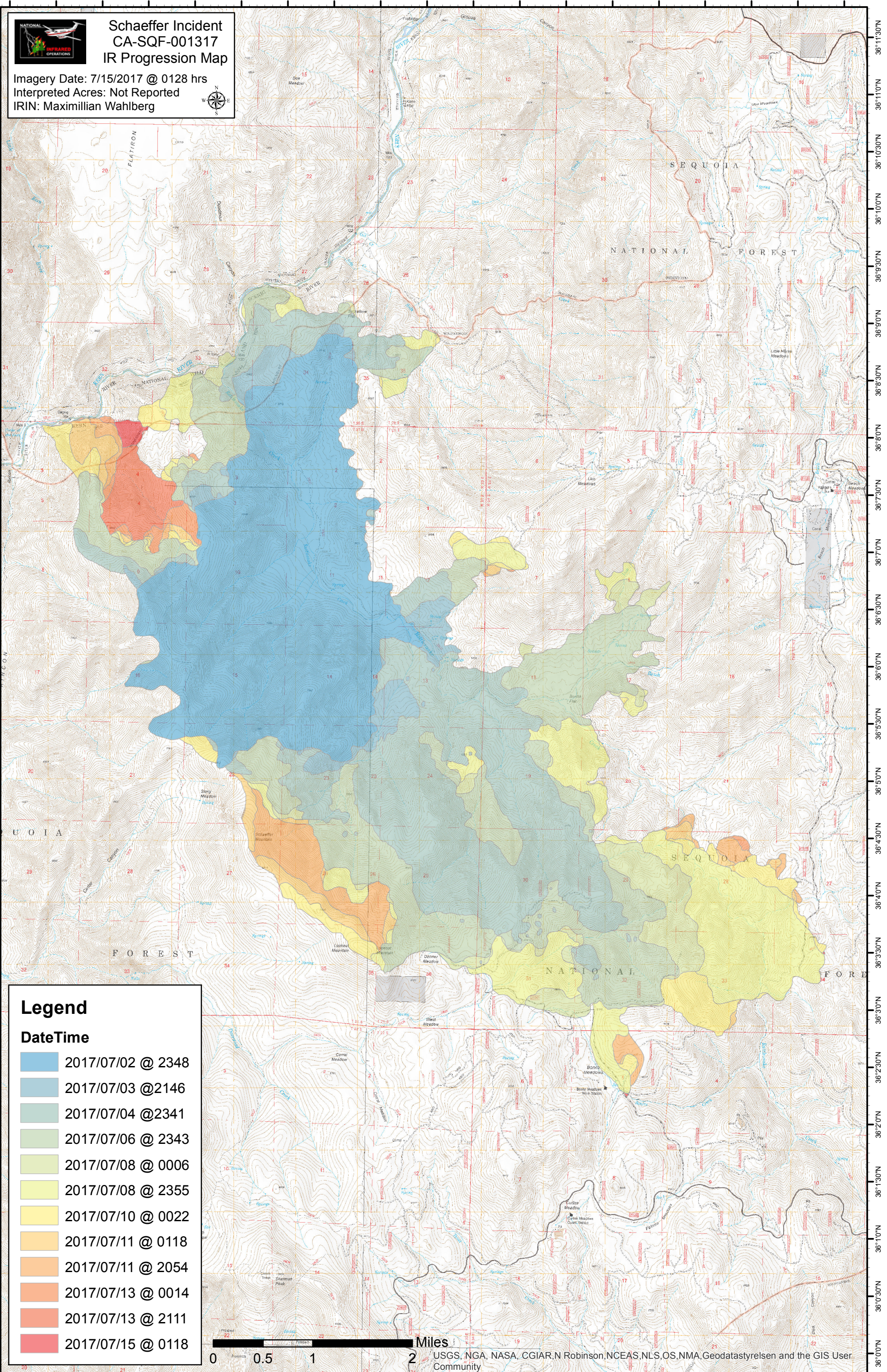


118°26'30"W 118°26'0"W 118°25'30"W 118°25'0"W 118°24'30"W 118°24'0"W 118°23'30"W 118°23'0"W 118°22'30"W 118°22'0"W 118°21'30"W 118°21'0"W 118°20'30"W 118°20'0"W 118°19'30"W 118°19'0"W 118°18'30"W 118°18'0"W 118°17'30"W



Schaeffer Incident CA-SQF-001317 IR Progression Map

Imagery Date: 7/15/2017 @ 0128 hrs
Interpreted Acres: Not Reported
IRIN: Maximilian Wahlberg



Legend

DateTime

- 2017/07/02 @ 2348
- 2017/07/03 @ 2146
- 2017/07/04 @ 2341
- 2017/07/06 @ 2343
- 2017/07/08 @ 0006
- 2017/07/08 @ 2355
- 2017/07/10 @ 0022
- 2017/07/11 @ 0118
- 2017/07/11 @ 2054
- 2017/07/13 @ 0014
- 2017/07/13 @ 2111
- 2017/07/15 @ 0118



Miles
USGS, NGA, NASA, CGIAR, N Robinson, NCEAS, NLS, OS, NMA, Geodatastyrelsen and the GIS User Community

118°26'0"W 118°25'30"W 118°25'0"W 118°24'30"W 118°24'0"W 118°23'30"W 118°23'0"W 118°22'30"W 118°22'0"W 118°21'30"W 118°21'0"W 118°20'30"W 118°20'0"W 118°19'30"W 118°19'0"W 118°18'30"W 118°18'0"W 118°17'30"W