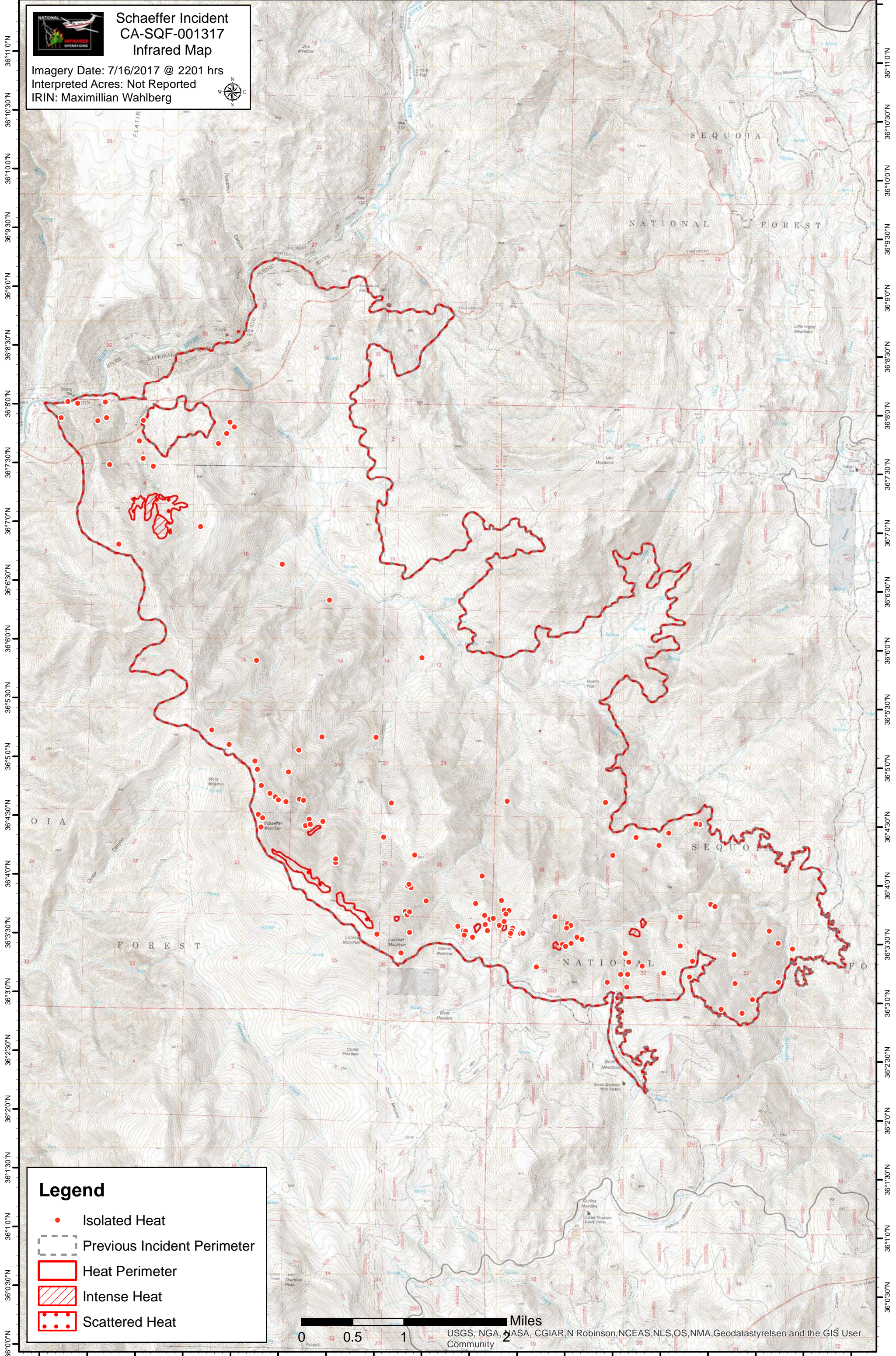


118°26'0"W 118°25'30"W 118°25'0"W 118°24'30"W 118°24'0"W 118°23'30"W 118°23'0"W 118°22'30"W 118°22'0"W 118°21'30"W 118°21'0"W 118°20'30"W 118°20'0"W 118°19'30"W 118°19'0"W 118°18'30"W 118°18'0"W 118°17'30"W



Schaeffer Incident CA-SQF-001317 Infrared Map

Imagery Date: 7/16/2017 @ 2201 hrs
Interpreted Acres: Not Reported
IRIN: Maximilian Wahlberg



Legend

- Isolated Heat
- Previous Incident Perimeter
- Heat Perimeter
- Intense Heat
- Scattered Heat

0 0.5 1 2 Miles

USGS, NGA, NASA, CGIAR, N Robinson, NCEAS, NLS, OS, NMA, Geodatastyrelsen and the GIS User Community

118°26'0"W 118°25'30"W 118°25'0"W 118°24'30"W 118°24'0"W 118°23'30"W 118°23'0"W 118°22'30"W 118°22'0"W 118°21'30"W 118°21'0"W 118°20'30"W 118°20'0"W 118°19'30"W 118°19'0"W 118°18'30"W 118°18'0"W 118°17'30"W