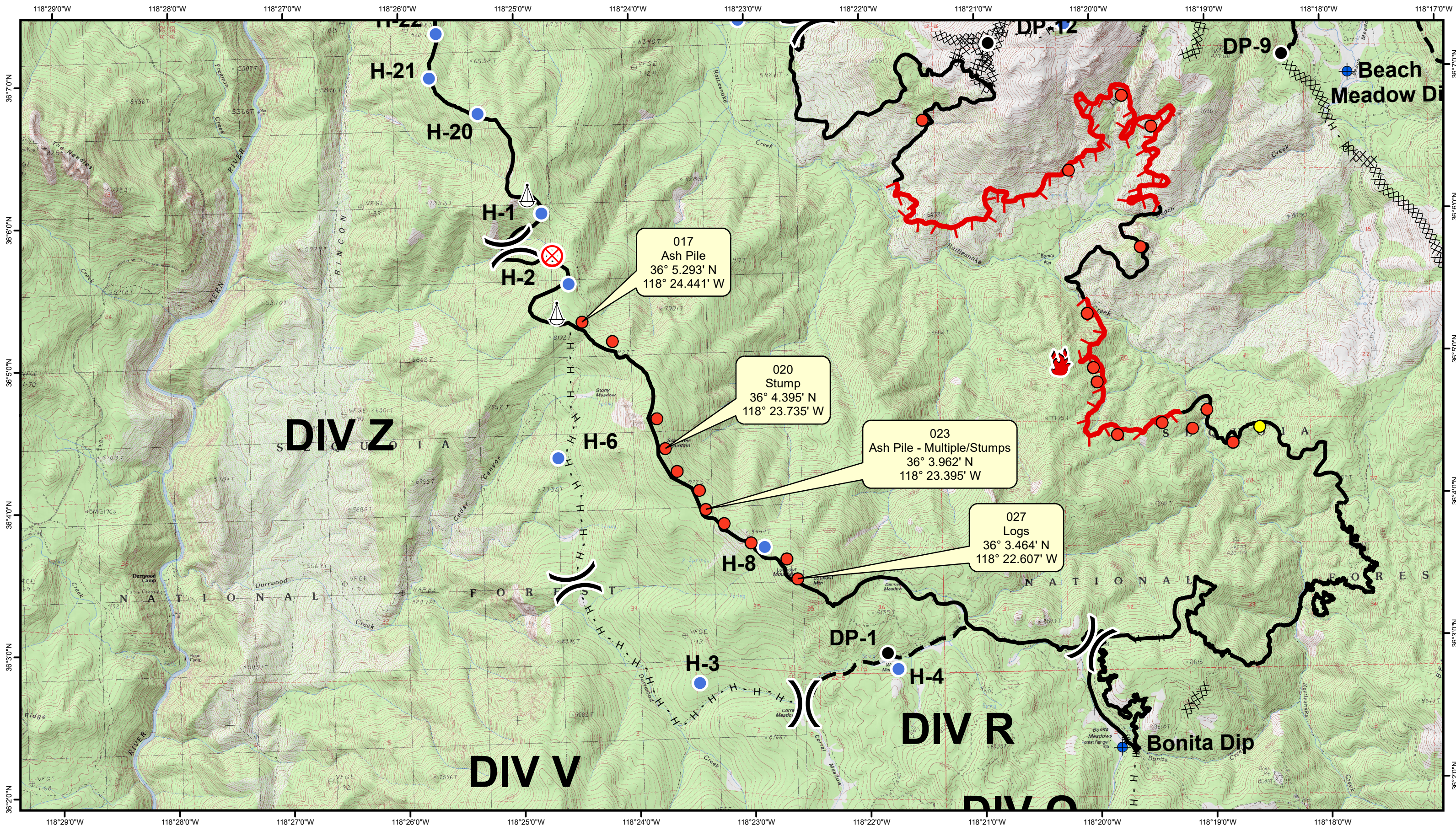
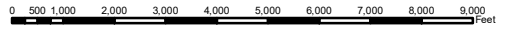


ident	long	lat	IR_Type	Label	Division
001	118° 18.574' W	36° 4.478' N	Moderate	Scattered Heat	Div K
002	118° 18.807' W	36° 4.371' N	Significant	Stump	Div K
003	118° 19.029' W	36° 4.605' N	Significant	Ash Pile	Div K
004	118° 19.156' W	36° 4.474' N	Significant	Logs	Div K
005	118° 19.418' W	36° 4.518' N	Significant	Logs	Div K
006	118° 19.810' W	36° 4.438' N	Significant	Stove Pipe	Div K
007	118° 19.978' W	36° 4.812' N	Significant	Stump	Div H
008	118° 20.007' W	36° 4.912' N	Significant	Logs	Div H
009	118° 20.286' W	36° 4.957' N	Open	Slash	Div H
010	118° 20.054' W	36° 5.293' N	Significant	Logs	Div H
011	118° 19.582' W	36° 5.757' N	Significant	Stump	Div H
012	118° 19.472' W	36° 6.602' N	Significant	Ash Pile	Div D
013	118° 19.726' W	36° 6.821' N	Significant	Ash Pile	Div D
014	118° 20.194' W	36° 6.302' N	Significant	Ash Pile	Div D
015	118° 21.459' W	36° 6.671' N	Significant	Ash Pile	Div D
016	118° 23.463' W	36° 9.175' N	Moderate	Scattered Heat	Div B
017	118° 24.441' W	36° 5.293' N	Significant	Ash Pile	Div Z
018	118° 24.179' W	36° 5.153' N	Significant	Logs	Div Z
019	118° 23.805' W	36° 4.605' N	Significant	Logs	Div Z
020	118° 23.735' W	36° 4.395' N	Significant	Stump	Div Z
021	118° 23.637' W	36° 4.232' N	Significant	Ash Pile - Multiple/Stumps	Div Z
022	118° 23.448' W	36° 4.097' N	Significant	Ash Pile - Multiple/Stumps	Div Z
023	118° 23.395' W	36° 3.962' N	Significant	Ash Pile - Multiple/Stumps	Div Z
024	118° 23.236' W	36° 3.862' N	Significant	Ash Pile - Multiple/Stumps	Div V
025	118° 23.004' W	36° 3.722' N	Significant	Stumps	Div V
026	118° 22.697' W	36° 3.605' N	Significant	Stumps	Div V
027	118° 22.607' W	36° 3.464' N	Significant	Logs	Div V



- Hot Spot - Within 200' of the line (Heat above 200 degrees, Little Vegetation in Vicinity)
- Hot Spot - Within 200' of the line (Heat above 200 degrees, Unburned Vegetation in Vicinity)
- 🔥 Live Fire - Uncontained Spot Fire or Fire Front

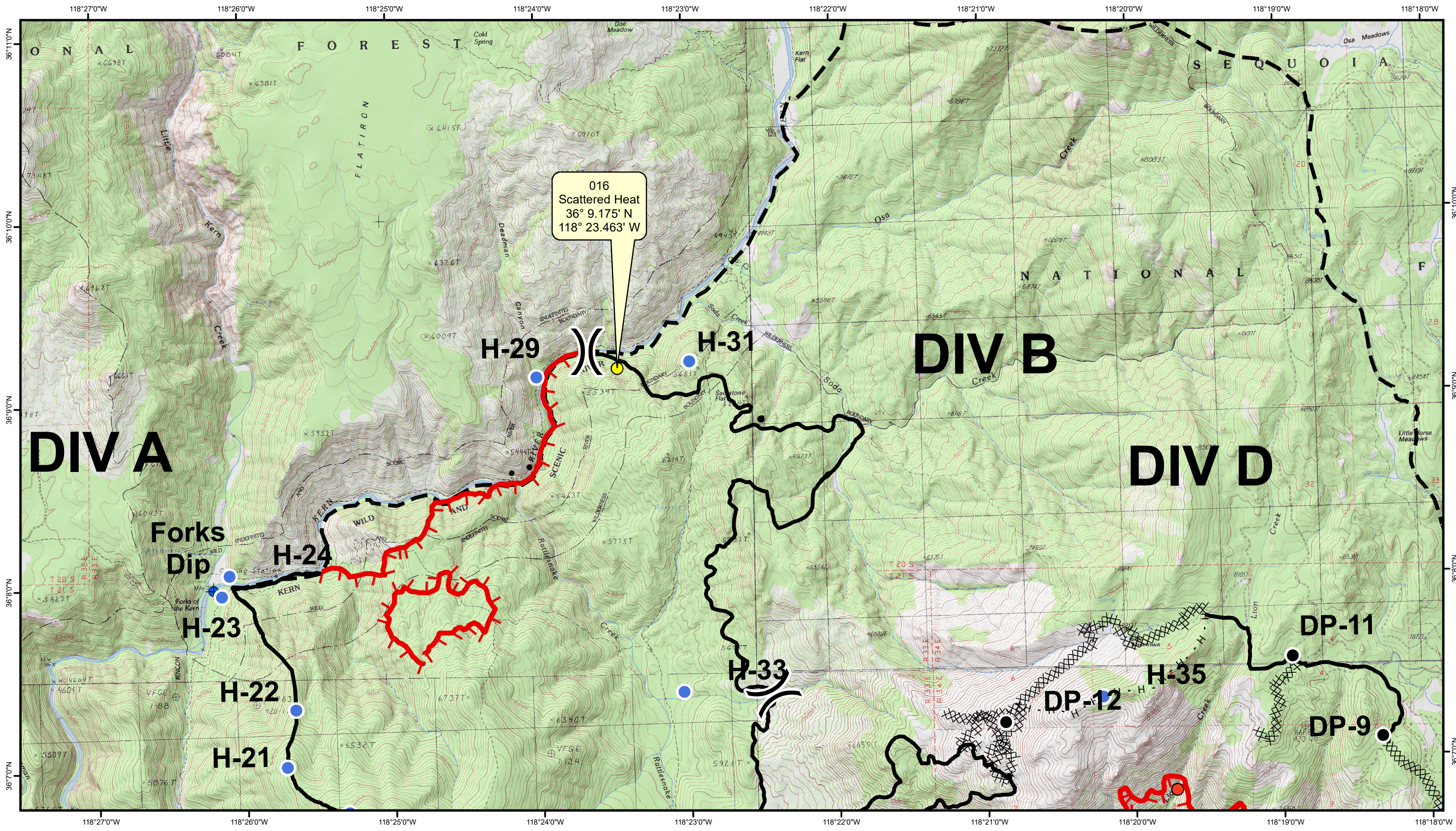
Schaeffer Fire
CA-SQF-001317



Div V & Z

Data Collected: 20170715 @ 1445





016
Scattered Heat
36° 9.175' N
118° 23.463' W

DIV A

DIV B

DIV D

Forks Dip

H-23

H-22

H-21

H-24

H-29

H-31

H-33

DP-12

H-35

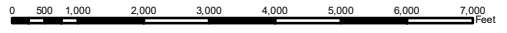
DP-11

DP-9



- Hot Spot - Within 200' of the line (Heat above 200 degrees, Little Vegetation in Vicinity)
- Hot Spot - Within 200' of the line (Heat above 200 degrees, Unburned Vegetation in Vicinity)
- Live Fire - Uncontained Spot Fire or Fire Front

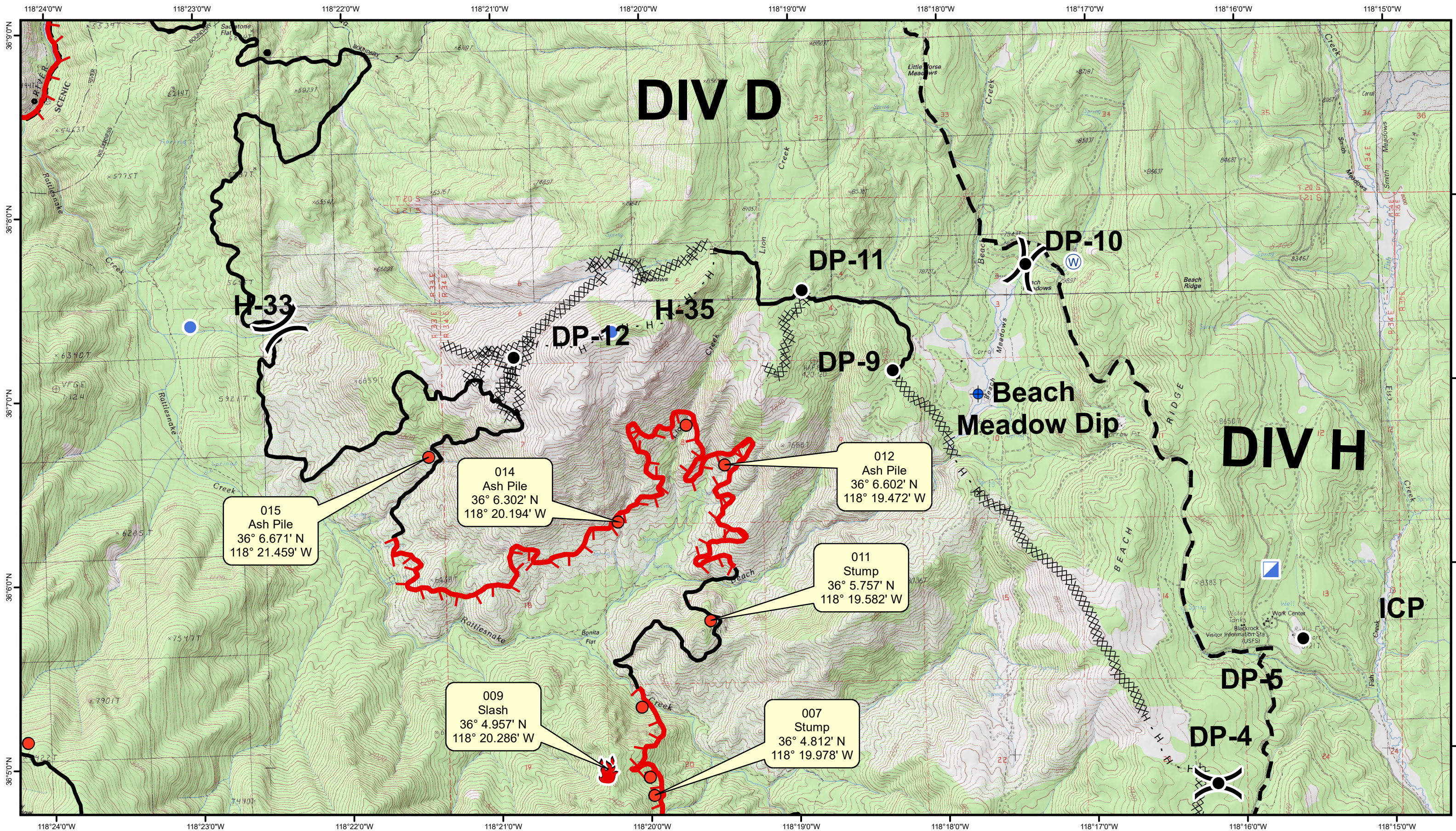
Schaeffer Fire
CA-SQF-001317



Div B

Data Collected: 20170715 @ 1445





015
Ash Pile
36° 6.671' N
118° 21.459' W

014
Ash Pile
36° 6.302' N
118° 20.194' W

012
Ash Pile
36° 6.602' N
118° 19.472' W

011
Stump
36° 5.757' N
118° 19.582' W

009
Slash
36° 4.957' N
118° 20.286' W

007
Stump
36° 4.812' N
118° 19.978' W



- Hot Spot - Within 200' of the line (Heat above 200 degrees, Little Vegetation in Vicinity)
- Hot Spot - Within 200' of the line (Heat above 200 degrees, Unburned Vegetation in Vicinity)
- 🔥 Live Fire - Uncontained Spot Fire or Fire Front

Schaeffer Fire

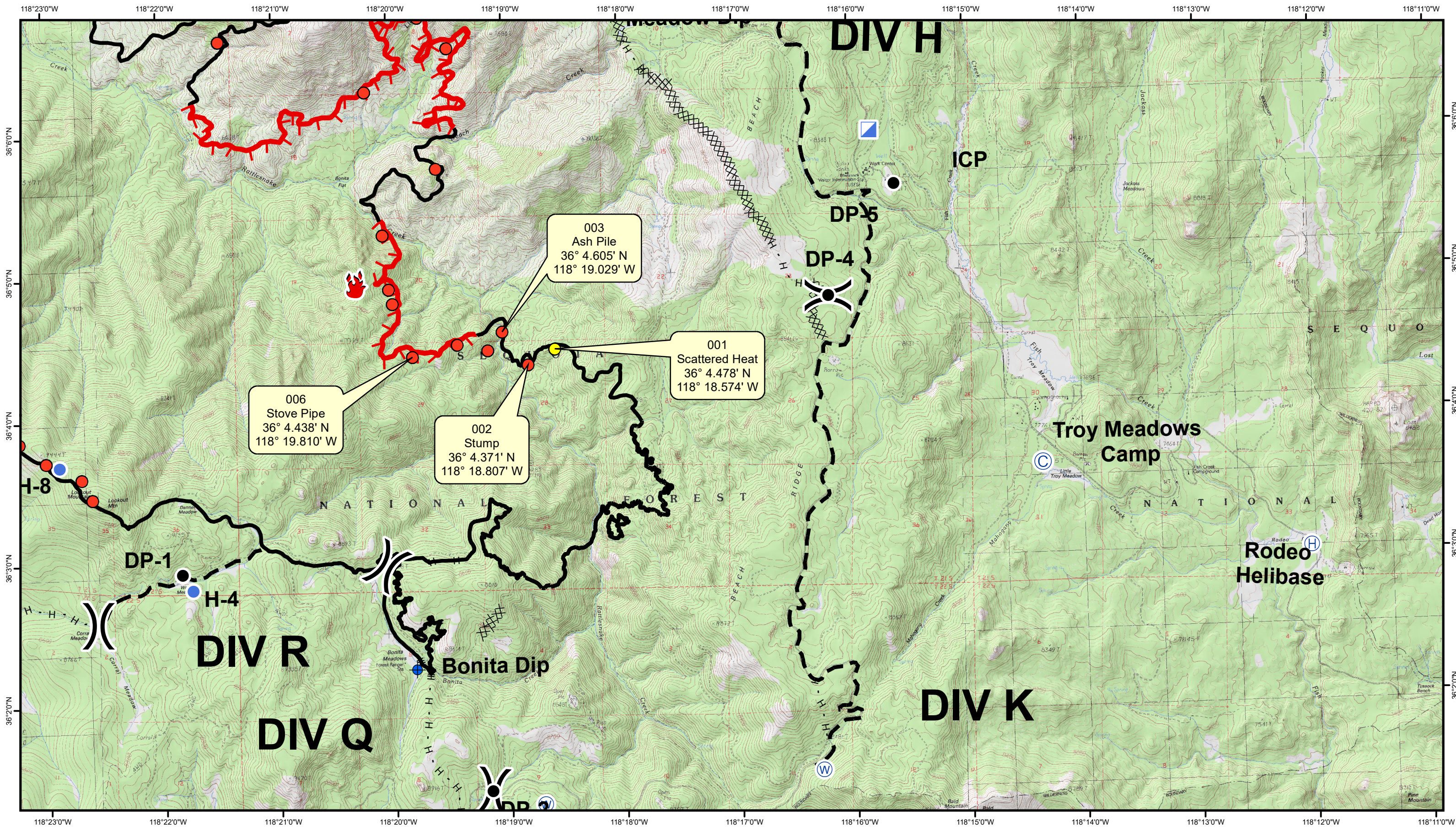
CA-SQF-001317



Div D & H

Data Collected: 20170715 @ 1445



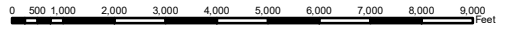


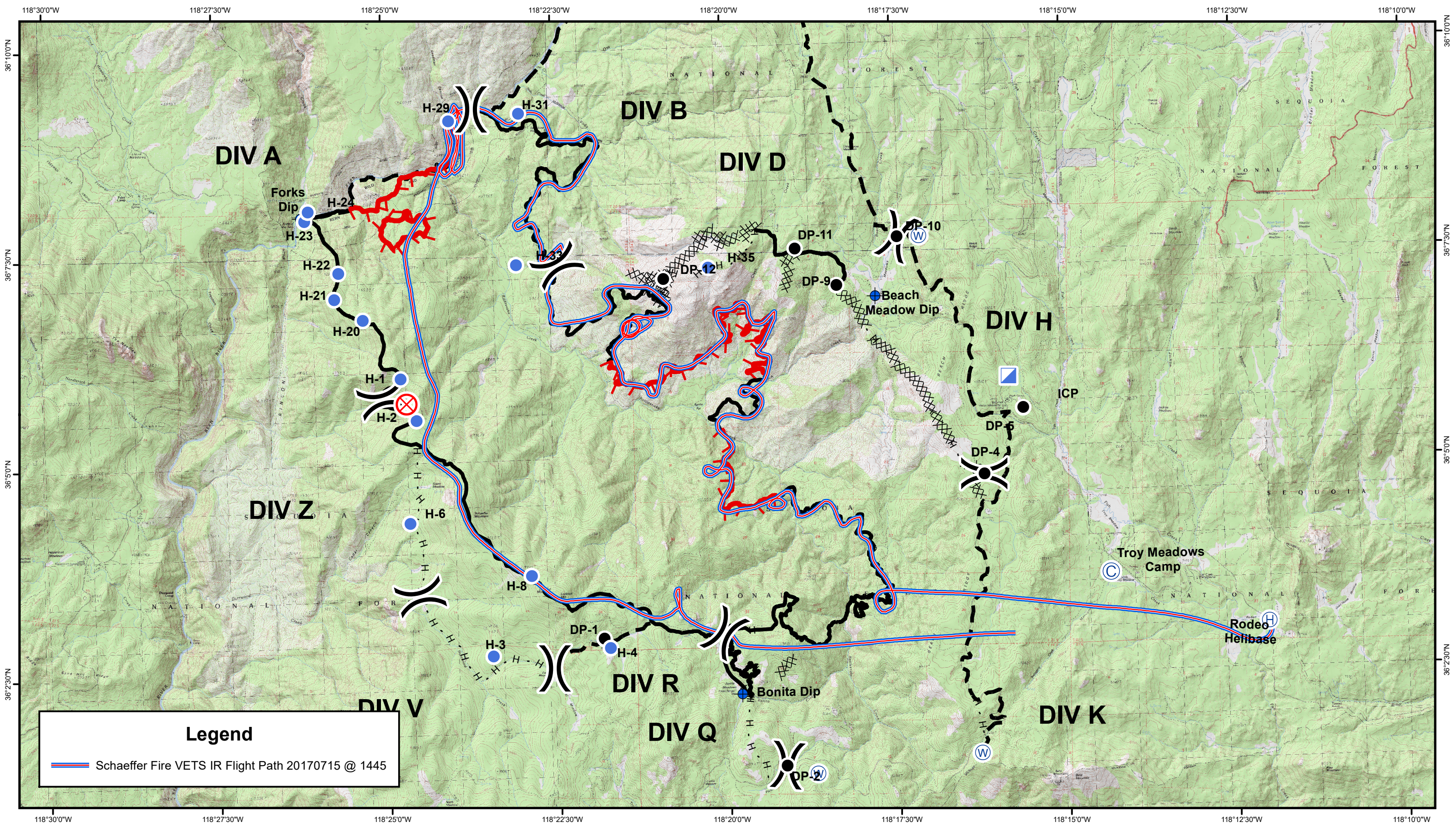
- 003
Ash Pile
36° 4.605' N
118° 19.029' W
- 001
Scattered Heat
36° 4.478' N
118° 18.574' W
- 002
Stump
36° 4.371' N
118° 18.807' W
- 006
Stove Pipe
36° 4.438' N
118° 19.810' W

Schaeffer Fire
CA-SQF-001317


- Hot Spot - Within 200' of the line (Heat above 200 degrees, Little Vegetation in Vicinity)
- Hot Spot - Within 200' of the line (Heat above 200 degrees, Unburned Vegetation in Vicinity)
- Live Fire - Uncontained Spot Fire or Fire Front

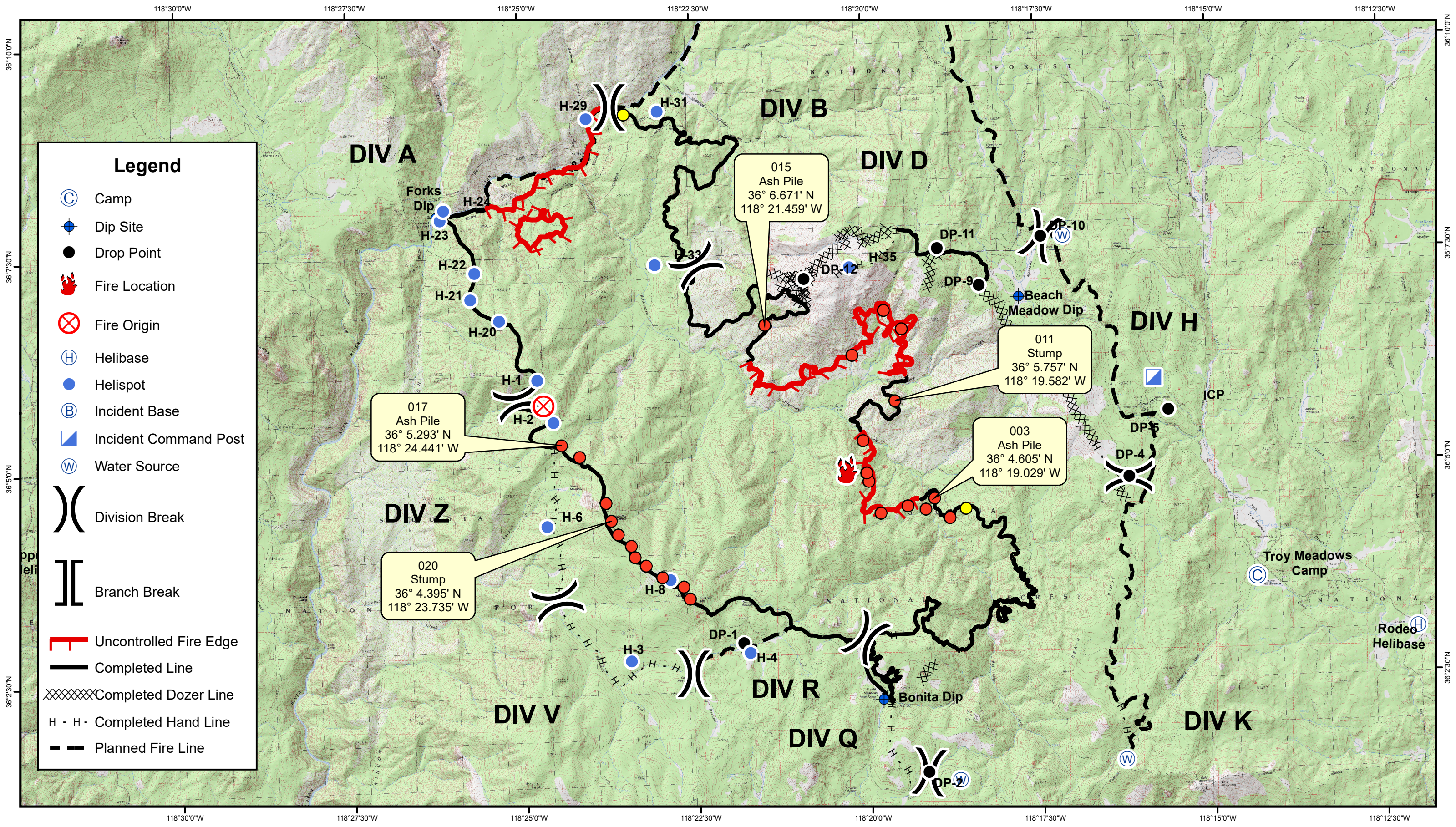
Div K
Data Collected: 20170715 @ 1445





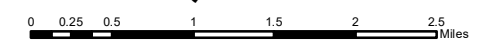
Legend

 Schaeffer Fire VETS IR Flight Path 20170715 @ 1445



Schaeffer Fire

CA-SQF-001317






INDEX

Data Collected: 20170715 @ 1445





INFRARED MAP LEGEND

-  Hot Spot - Moderate Priority (Possible Threat to Fireline)
-  Hot Spot - Significant Priority (Considerable Threat to Fireline)
-  Live Fire - Uncontained Spot Fire or Fire Front

GPS Coordinates are in Degrees & Decimal Minutes (DD° MM.mmmm')

Datum is WGS 84 (unless otherwise noted on map)

Ex. 34° 04.405
 -118° 14.414

Date and Time is when the intelligence was gathered

Heat Sources are normally acquired within a 400 foot strip, 200 feet inside and 200 feet outside the fire line or fire front (wider strips are flown as necessary and are labeled on infrared map).

LIMITS TO INFRARED AND GPS INFORMATION

Under the best conditions heat sources less than 4 to 6 inches in diameter are inconsistent.

Very Small Heat sources under heavy canopy or in large rock piles are difficult to verify.

Accuracy of GPS coordinates is within 50 feet, 90% of the time.

Labeling Details:

