

118°42'0"W

118°40'30"W

118°39'0"W

118°37'30"W

118°36'0"W

118°34'30"W

35°34'30"N

35°33'0"N

35°31'30"N

35°30'0"N

35°28'30"N

35°27'0"N

35°34'30"N

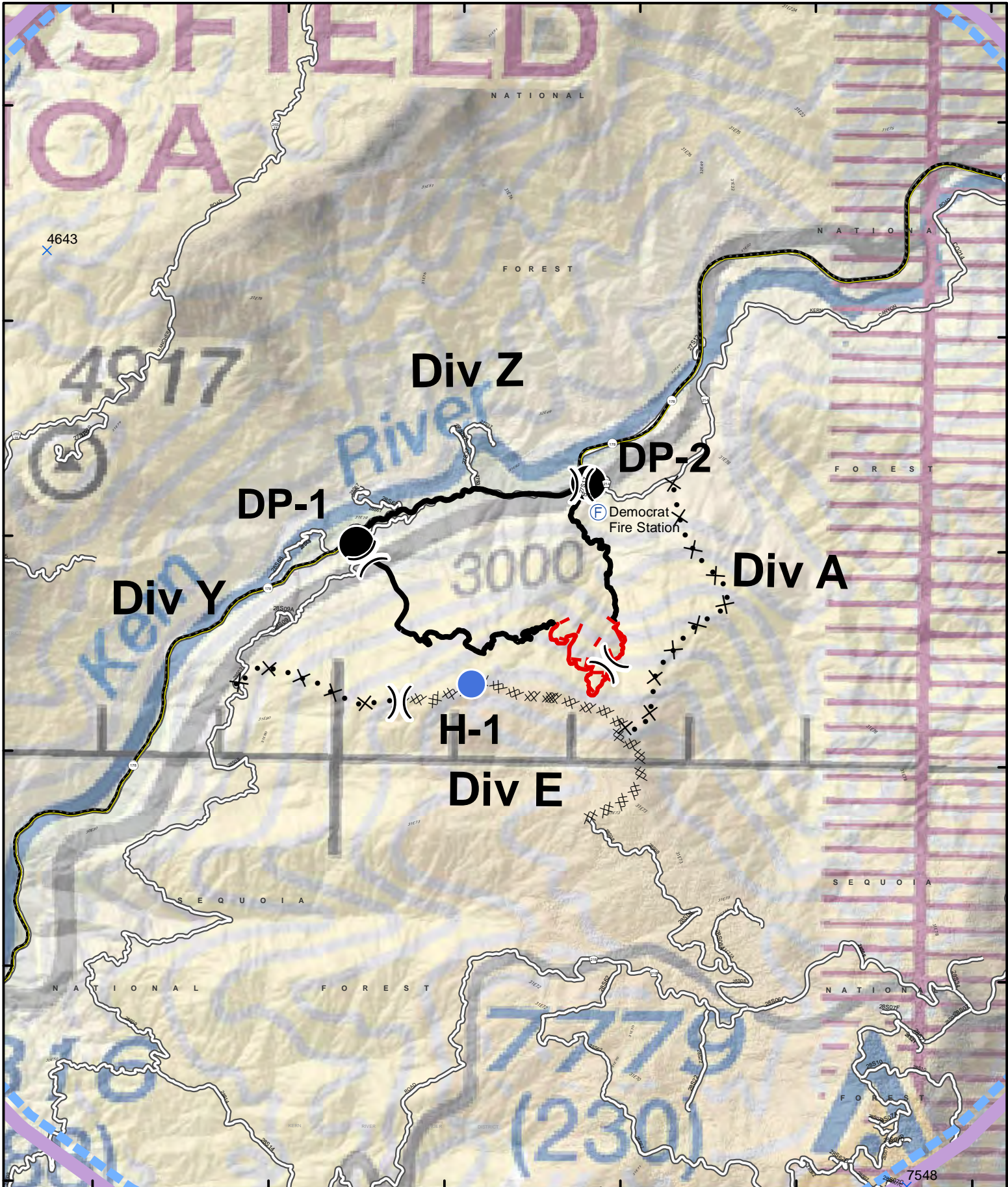
35°33'0"N

35°31'30"N

35°30'0"N

35°28'30"N

35°27'0"N



118°42'0"W

118°40'30"W

118°39'0"W

118°37'30"W

118°36'0"W

118°34'30"W

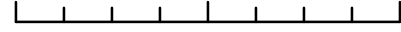


Air Ops Map

GARDEN CA-SQF-001989

8/3/17 0600hrs- 8/6/17 0600hrs

0 0.5 1 2 Mile



Lat Long Grid
NAD 83 UTM 11
Degrees Decimal Minutes


DMH


 Uncontrolled Fire Edge

 Completed Dozer Line

 Completed Line

 Proposed Dozer Line

 Drop Point

 Helispot

 Summits

 Division

 TFR

LABEL	LAT	LONG
DP-1	118 39.843	35 31.467
DP-2	118 37.87	35 31.931
H-1	118 38.852	35 30.524

Frequencies	AM	FM
AIR/AIR-RW	122.275	
AIR/AIR-RW		167.0625 RX/TX
AIR/GRND Tactical		166.6750 RX/TX
AIR/GRND		RX/TX
Command		SQF Channel 4, RX 170.550 TX 166.000 Tone 5:146.2
AIR/GUARD		168.6250 RX/TX
HELIBASE TOLC/DECK		163.100 RX/TX