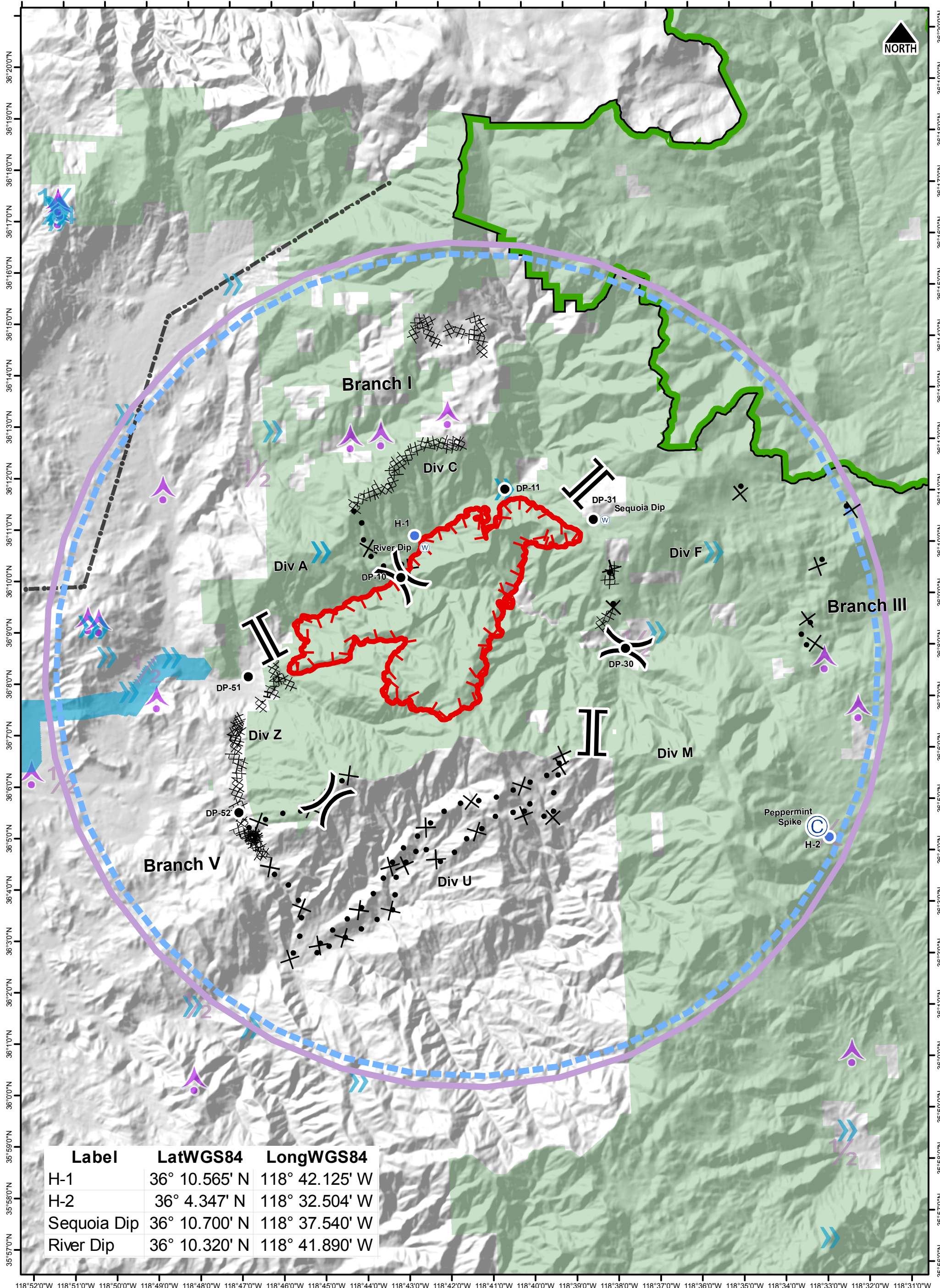


118°51'0"W 118°50'0"W 118°49'0"W 118°48'0"W 118°47'0"W 118°46'0"W 118°45'0"W 118°44'0"W 118°43'0"W 118°42'0"W 118°41'0"W 118°40'0"W 118°39'0"W 118°38'0"W 118°37'0"W 118°36'0"W 118°35'0"W 118°34'0"W 118°33'0"W 118°32'0"W 118°31'0"W 118°30'0"W

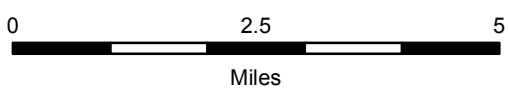


Label	LatWGS84	LongWGS84
H-1	36° 10.565' N	118° 42.125' W
H-2	36° 4.347' N	118° 32.504' W
Sequoia Dip	36° 10.700' N	118° 37.540' W
River Dip	36° 10.320' N	118° 41.890' W

Pilot Map Overview Pier Incident CA-SQF-002385



9/2/2017 NAD83



1/2 AviationActivity_PL_04242017

>> 51-200 ft AGL Hazard
1/4 201-2,000 ft

Power Transmission Line
Wilderness
FS Ownership