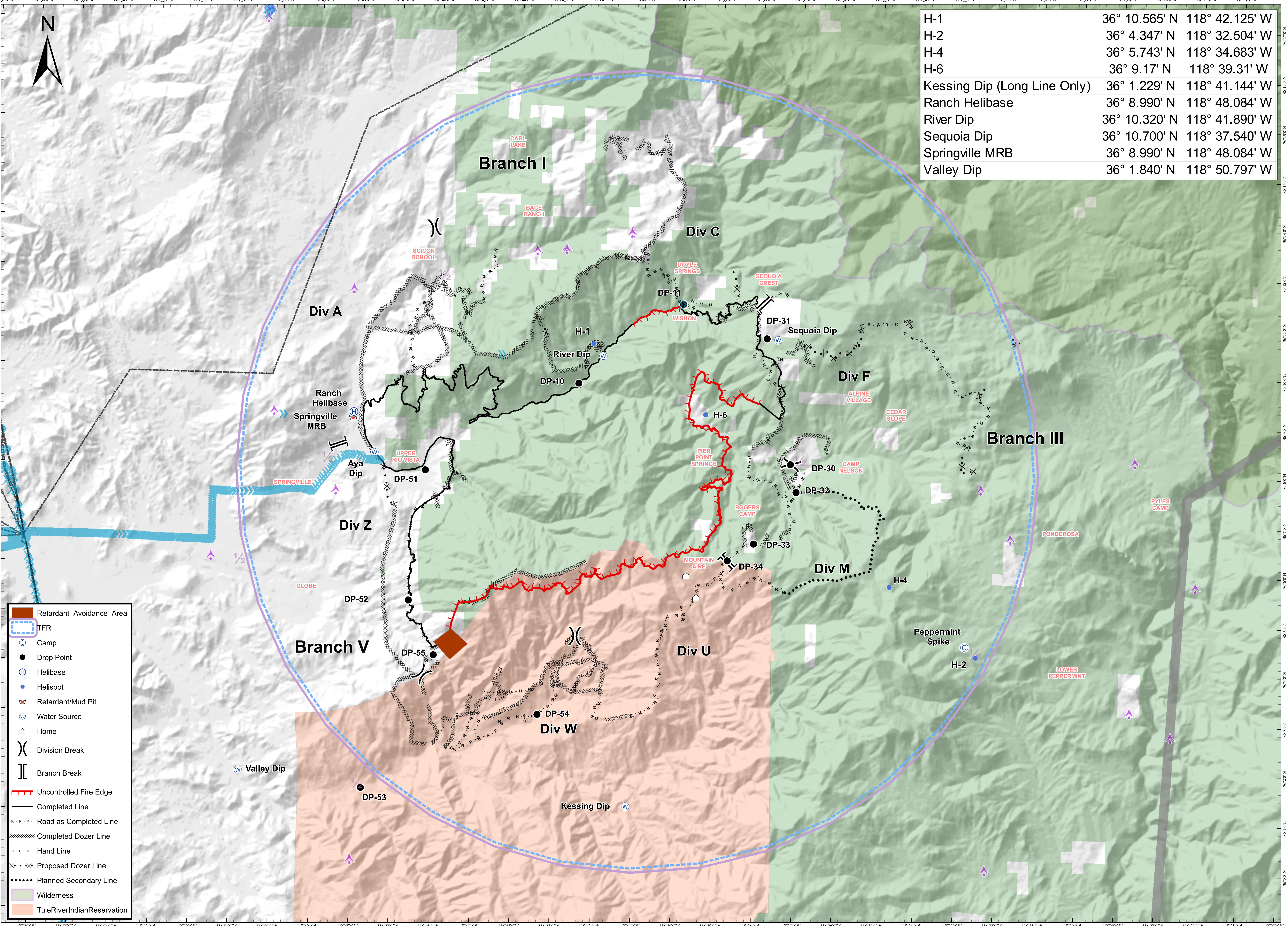


H-1	36° 10.565' N	118° 42.125' W
H-2	36° 4.347' N	118° 32.504' W
H-4	36° 5.743' N	118° 34.683' W
H-6	36° 9.17' N	118° 39.31' W
Kessing Dip (Long Line Only)	36° 1.229' N	118° 41.144' W
Ranch Helibase	36° 8.990' N	118° 48.084' W
River Dip	36° 10.320' N	118° 41.890' W
Sequoia Dip	36° 10.700' N	118° 37.540' W
Springville MRB	36° 8.990' N	118° 48.084' W
Valley Dip	36° 1.840' N	118° 50.797' W



- Retardant_Avoidance_Area
- TFR
- Camp
- Drop Point
- Helibase
- Helispot
- Retardant/Mud Pit
- Water Source
- Home
- Division Break
- Branch Break
- Uncontrolled Fire Edge
- Completed Line
- Road as Completed Line
- Completed Dozer Line
- Hand Line
- Proposed Dozer Line
- Planned Secondary Line
- Wilderness
- TuleRiverIndianReservation

Pier
 CA-SQF-002385
 9/10/2017

