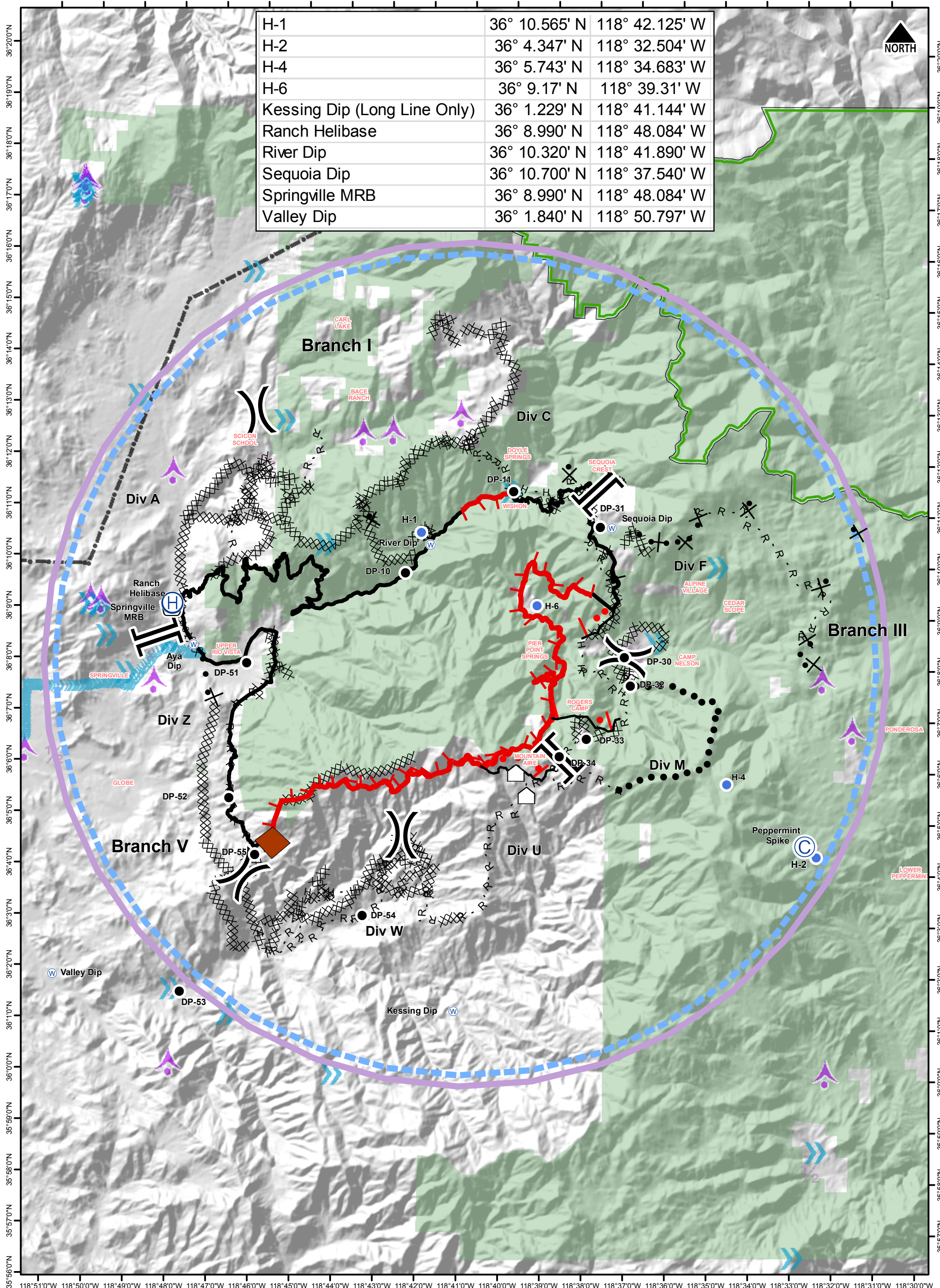


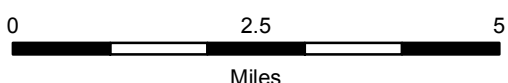
H-1	36° 10.565' N	118° 42.125' W
H-2	36° 4.347' N	118° 32.504' W
H-4	36° 5.743' N	118° 34.683' W
H-6	36° 9.17' N	118° 39.31' W
Kessing Dip (Long Line Only)	36° 1.229' N	118° 41.144' W
Ranch Helibase	36° 8.990' N	118° 48.084' W
River Dip	36° 10.320' N	118° 41.890' W
Sequoia Dip	36° 10.700' N	118° 37.540' W
Springville MRB	36° 8.990' N	118° 48.084' W
Valley Dip	36° 1.840' N	118° 50.797' W



Pilot Map Overview Pier Incident CA-SQF-002385



9/10/2017 NAD83



- 1/2 AviationActivity_Pt_04242017
- >> 51-200 ft AGL Hazard
- 1/4 201-2,000 ft
- Power Transmission Line
- Wilderness
- Retardant_Avoidance_Area
- FS Ownership