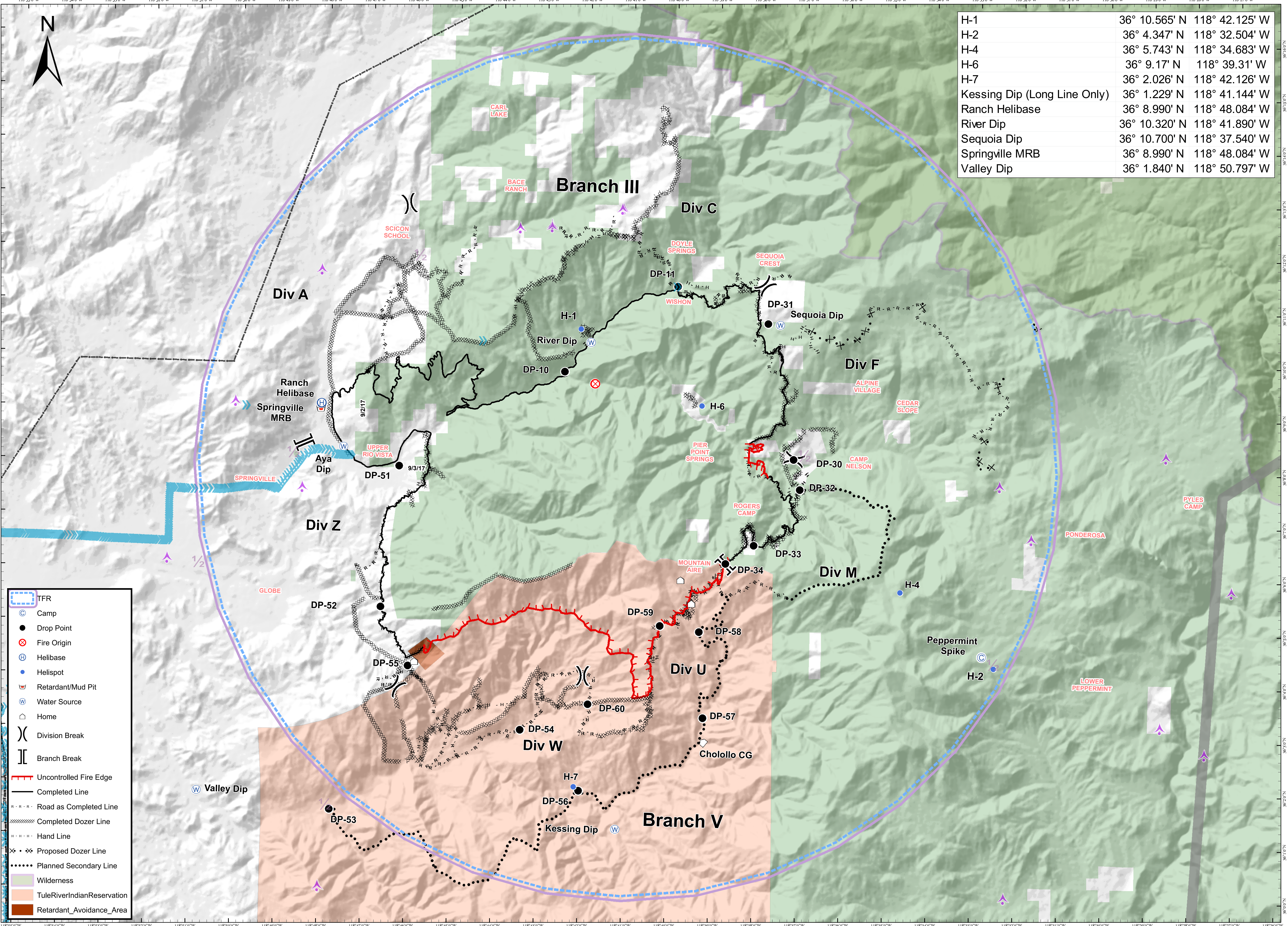


H-1	36° 10.565' N	118° 42.125' W
H-2	36° 4.347' N	118° 32.504' W
H-4	36° 5.743' N	118° 34.683' W
H-6	36° 9.17' N	118° 39.31' W
H-7	36° 2.026' N	118° 42.126' W
Kessing Dip (Long Line Only)	36° 1.229' N	118° 41.144' W
Ranch Helibase	36° 8.990' N	118° 48.084' W
River Dip	36° 10.320' N	118° 41.890' W
Sequoia Dip	36° 10.700' N	118° 37.540' W
Springville MRB	36° 8.990' N	118° 48.084' W
Valley Dip	36° 1.840' N	118° 50.797' W



- TFR
- Camp
- Drop Point
- Fire Origin
- Helibase
- Helispot
- Retardant/Mud Pit
- Water Source
- Home
- Division Break
- Branch Break
- Uncontrolled Fire Edge
- Completed Line
- Road as Completed Line
- Completed Dozer Line
- Hand Line
- Proposed Dozer Line
- Planned Secondary Line
- Wilderness
- TuleRiverIndianReservation
- Retardant_Avoidance_Area

118°55'0"W 118°54'0"W 118°53'0"W 118°52'0"W 118°51'0"W 118°50'0"W 118°49'0"W 118°48'0"W 118°47'0"W 118°46'0"W 118°45'0"W 118°44'0"W 118°43'0"W 118°42'0"W 118°41'0"W 118°40'0"W 118°39'0"W 118°38'0"W 118°37'0"W 118°36'0"W 118°35'0"W 118°34'0"W 118°33'0"W 118°32'0"W 118°31'0"W 118°30'0"W 118°29'0"W 118°28'0"W 118°27'0"W 118°26'0"W

N 36°00'0"N 36°01'0"N 36°02'0"N 36°03'0"N 36°04'0"N 36°05'0"N 36°06'0"N 36°07'0"N 36°08'0"N 36°09'0"N 36°10'0"N 36°11'0"N 36°12'0"N 36°13'0"N 36°14'0"N 36°15'0"N 36°16'0"N 36°17'0"N 36°18'0"N 36°19'0"N 36°20'0"N 36°21'0"N 36°22'0"N 36°23'0"N 36°24'0"N 36°25'0"N 36°26'0"N 36°27'0"N 36°28'0"N 36°29'0"N 36°30'0"N 36°31'0"N 36°32'0"N 36°33'0"N 36°34'0"N 36°35'0"N 36°36'0"N 36°37'0"N 36°38'0"N 36°39'0"N 36°40'0"N 36°41'0"N 36°42'0"N 36°43'0"N 36°44'0"N 36°45'0"N 36°46'0"N 36°47'0"N 36°48'0"N 36°49'0"N 36°50'0"N 36°51'0"N 36°52'0"N 36°53'0"N 36°54'0"N 36°55'0"N 36°56'0"N 36°57'0"N 36°58'0"N 36°59'0"N 37°00'0"N

Pier
CA-SQF-002385
9/15/2017

