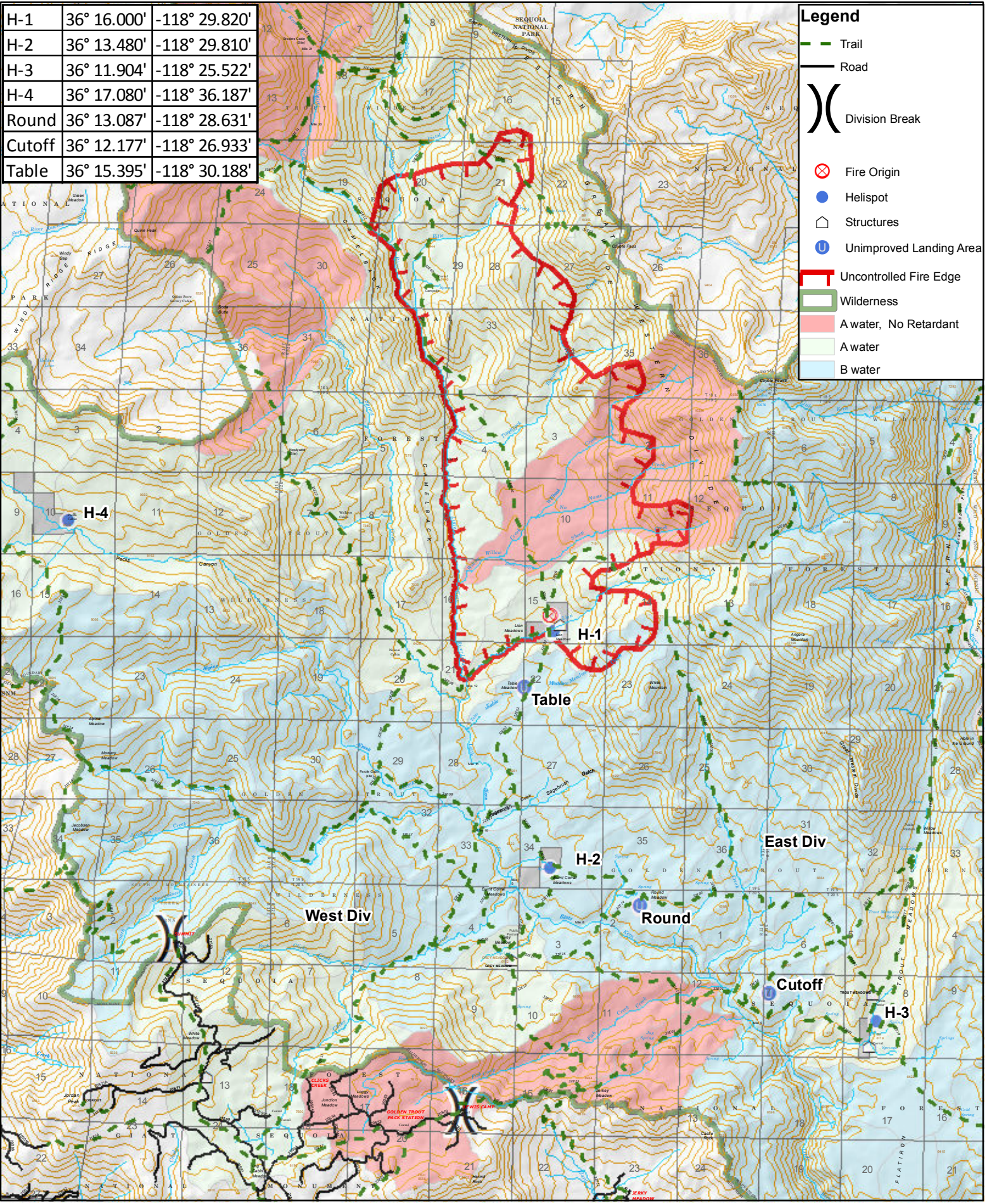


H-1	36° 16.000'	-118° 29.820'
H-2	36° 13.480'	-118° 29.810'
H-3	36° 11.904'	-118° 25.522'
H-4	36° 17.080'	-118° 36.187'
Round	36° 13.087'	-118° 28.631'
Cutoff	36° 12.177'	-118° 26.933'
Table	36° 15.395'	-118° 30.188'

Legend

- Trail
- Road
- Division Break
- Fire Origin
- Helispot
- Structures
- Unimproved Landing Area
- Uncontrolled Fire Edge
- Wilderness
- A water, No Retardant
- A water
- B water



Pilot Map

N
Current As Of: 10/4/2017 2:56:32 PM

Lion Incident

CA-SQF-002753
10/5/2017

