

H-1	36° 16.000'	-118° 29.820'
H-2	36° 13.480'	-118° 29.810'
H-3	36° 11.904'	-118° 25.522'
H-4	36° 17.080'	-118° 36.187'
H-5	36° 15.297'	-118° 36.793'
H-6	36° 12.487'	-118° 30.347'
Round	36° 13.087'	-118° 28.631'
Cutoff	36° 12.177'	-118° 26.933'
Table	36° 15.395'	-118° 30.188'

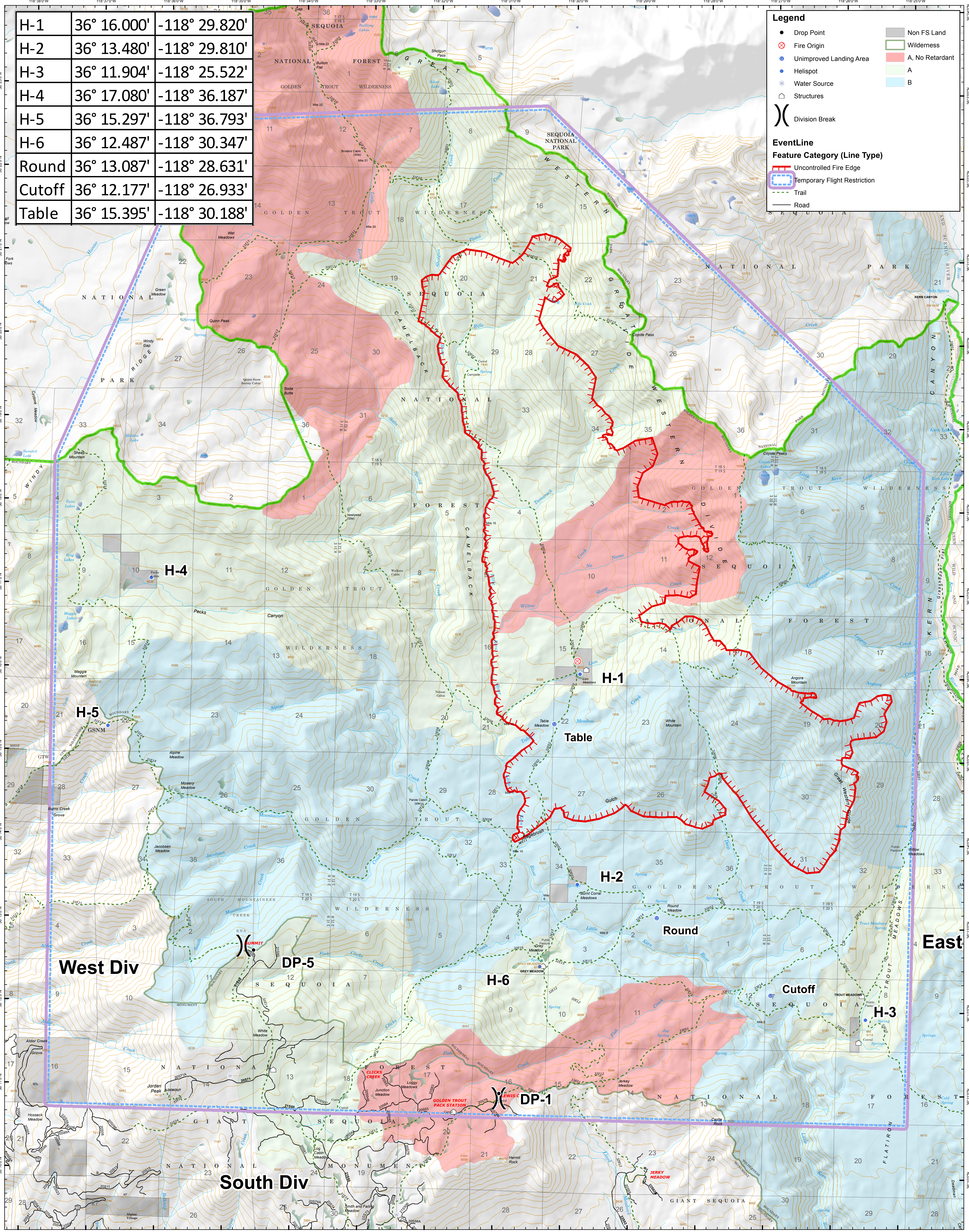
**Legend**

- Drop Point
- ⊗ Fire Origin
- Unimproved Landing Area
- Helispot
- Water Source
- ⊕ Structures
- ⎓ Division Break
- Non FS Land
- ▭ Wilderness
- A. No Retardant
- A
- B

**EventLine**

**Feature Category (Line Type)**

- ▬ Uncontrolled Fire Edge
- ▬ Temporary Flight Restriction
- ▬ Trail
- ▬ Road



**AIR OPS**

Current As Of: 10/11/2017 2:05:11 PM  
NAD 83



**Lion Incident**  
CA-SQF-002753  
10/12/2017

