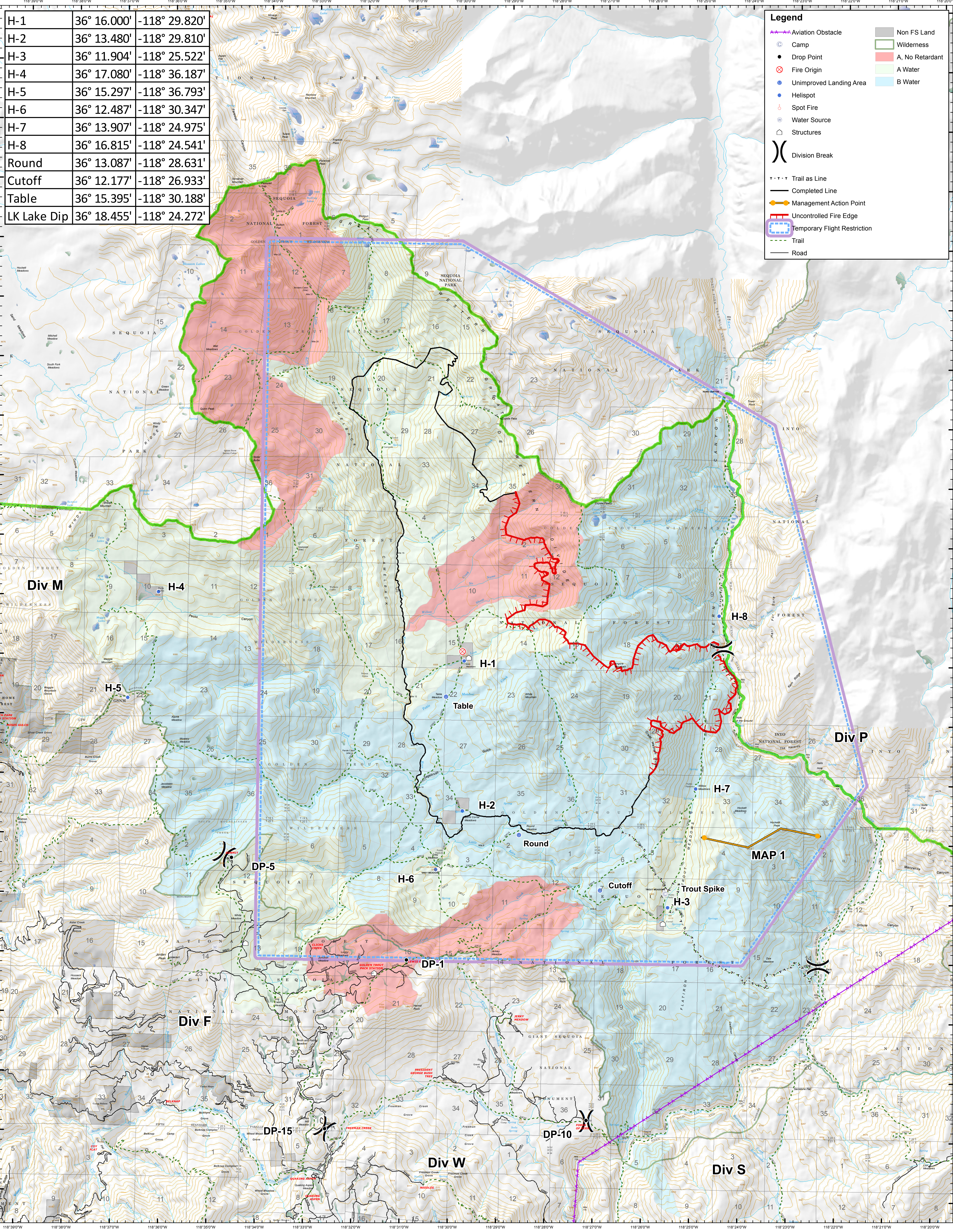


H-1	36° 16.000'	-118° 29.820'
H-2	36° 13.480'	-118° 29.810'
H-3	36° 11.904'	-118° 25.522'
H-4	36° 17.080'	-118° 36.187'
H-5	36° 15.297'	-118° 36.793'
H-6	36° 12.487'	-118° 30.347'
H-7	36° 13.907'	-118° 24.975'
H-8	36° 16.815'	-118° 24.541'
Round	36° 13.087'	-118° 28.631'
Cutoff	36° 12.177'	-118° 26.933'
Table	36° 15.395'	-118° 30.188'
LK Lake Dip	36° 18.455'	-118° 24.272'

Legend

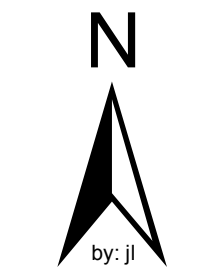
- Aviation Obstacle
- Camp
- Drop Point
- Fire Origin
- Unimproved Landing Area
- Helispot
- Spot Fire
- Water Source
- Structures
- Division Break
- Trail as Line
- Completed Line
- Management Action Point
- Uncontrolled Fire Edge
- Temporary Flight Restriction
- Trail
- Road
- Non FS Land
- Wilderness
- A No Retardant
- A Water
- B Water



AIR OPS



Current As Of: 10/19/2017 5:19:58 PM
NAD 83



Lion Incident
CA-SQF-002753
10/20/2017

