


**IAP Map**  
**Lion Incident**  
**CA-SQF-002753**  
**October 22, 2017**

Page 1

|    |    |    |    |
|----|----|----|----|
|    | 4  |    |    |
| 5  | 6  | 7  |    |
| 8  | 9  | 10 |    |
| 11 | 12 | 13 | 14 |
| 15 | 16 | 17 |    |
| 18 | 19 | 20 |    |

**Legend**

-  Completed Line
-  Trail
-  Wilderness
-  Administrative Forest

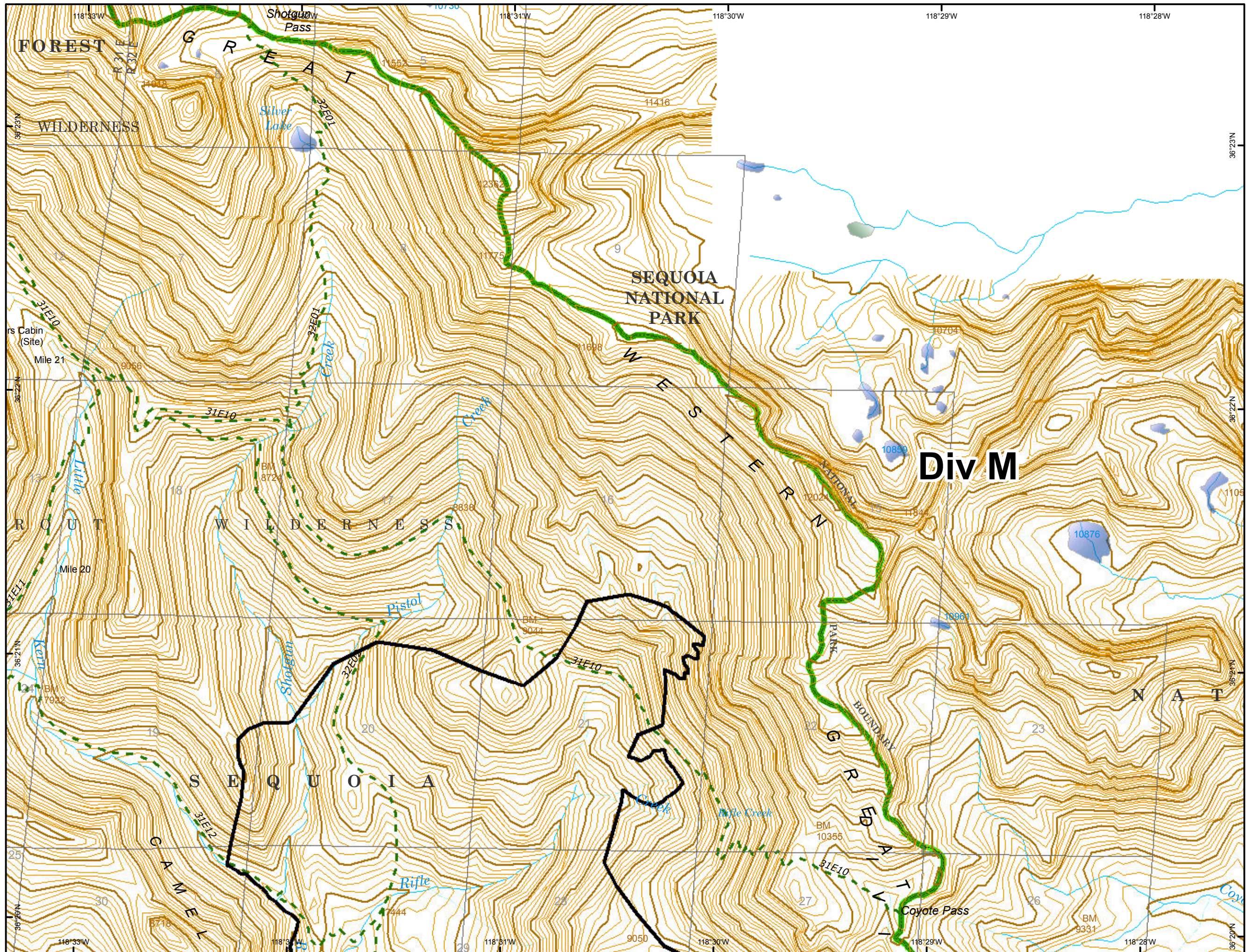


NAD83



Miles  
 0 0.5

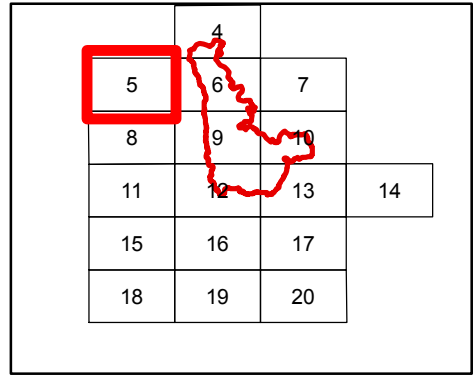
Current As Of: 10/21/2017  
 5:32:43 PM



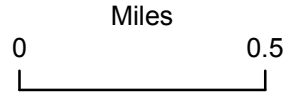
**Div M**

**IAP Map**  
**Lion Incident**  
**CA-SQF-002753**  
**October 22, 2017**

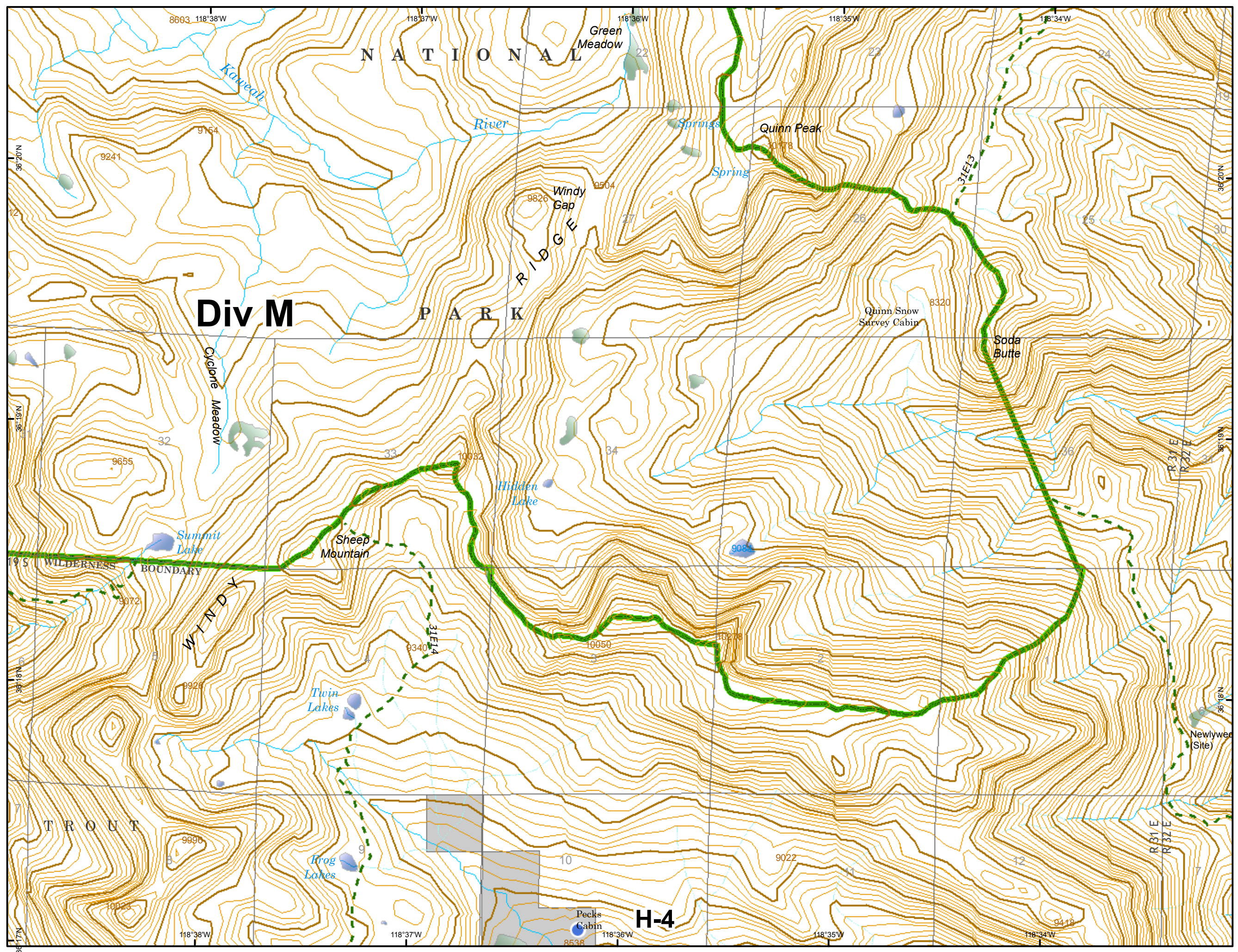
Page 2



- Legend**
- Helispot
  - - - Trail
  - Non FS Land
  - Wilderness
  - Administrative Forest



Current As Of: 10/21/2017  
 5:32:43 PM



**IAP Map**  
**Lion Incident**  
**CA-SQF-002753**  
**October 22, 2017**

Page 3

|    |    |    |    |
|----|----|----|----|
|    | 4  |    |    |
| 5  | 6  | 7  |    |
| 8  | 9  | 10 |    |
| 11 | 12 | 13 | 14 |
| 15 | 16 | 17 |    |
| 18 | 19 | 20 |    |

**Legend**

-  Completed Line
-  Trail
-  Wilderness
-  Administrative Forest

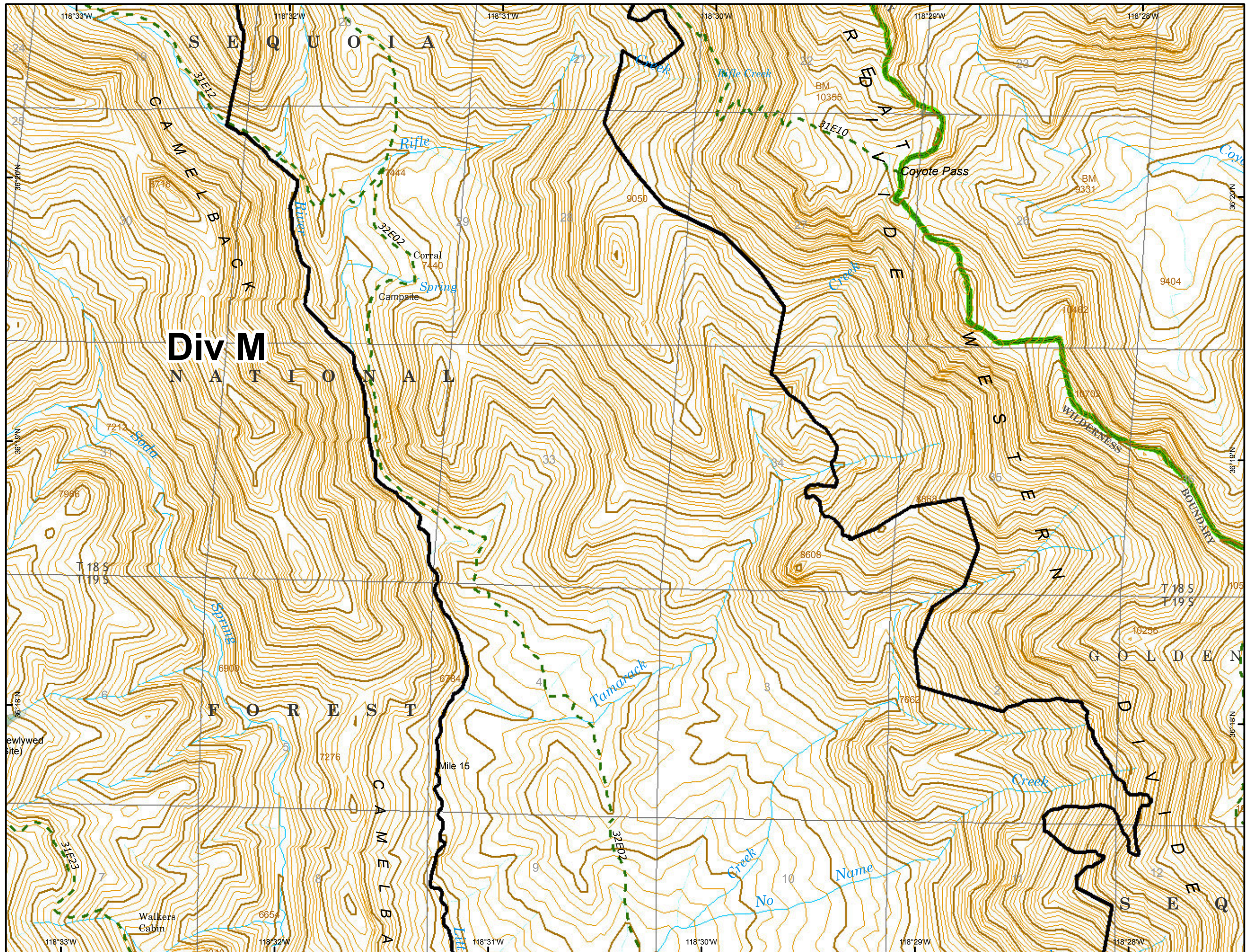


NAD83



Miles  
 0 0.5

Current As Of: 10/21/2017  
 5:32:43 PM




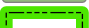


**IAP Map**  
**Lion Incident**  
**CA-SQF-002753**  
**October 22, 2017**

Page 4

|    |    |    |    |
|----|----|----|----|
|    | 4  |    |    |
| 5  | 6  | 7  |    |
| 8  | 9  | 10 |    |
| 11 | 12 | 13 | 14 |
| 15 | 16 | 17 |    |
| 18 | 19 | 20 |    |

**Legend**

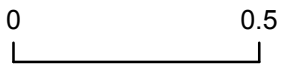
-  Water Source
-  Trail
-  Wilderness
-  Administrative Forest



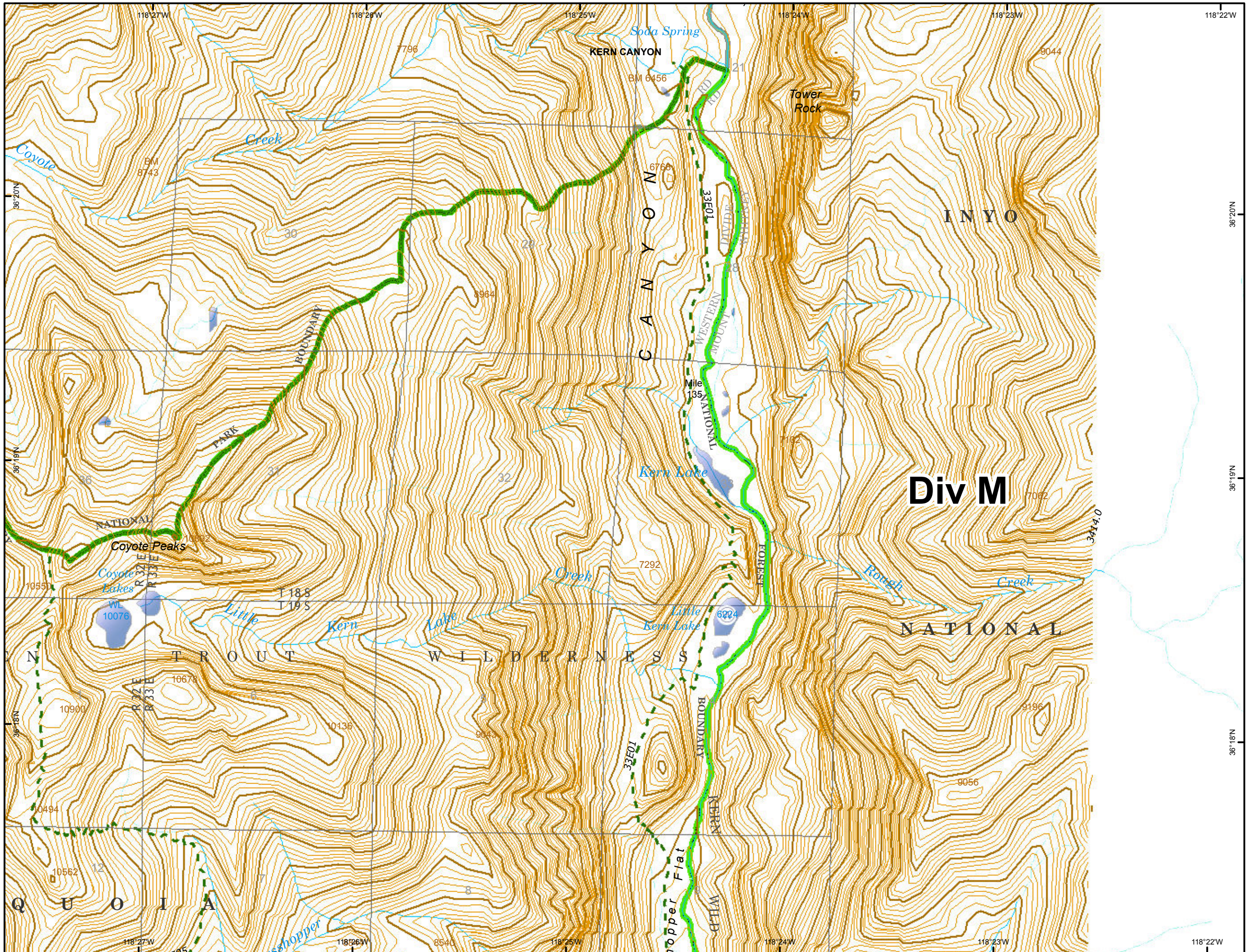
NAD83



Miles



Current As Of: 10/21/2017  
 5:32:43 PM



**IAP Map**  
**Lion Incident**  
**CA-SQF-002753**  
**October 22, 2017**

Page 5

|    |    |    |    |
|----|----|----|----|
|    | 4  |    |    |
| 5  | 6  | 7  |    |
| 8  | 9  | 10 |    |
| 11 | 12 | 13 | 14 |
| 15 | 16 | 17 |    |
| 18 | 19 | 20 |    |

**Legend**

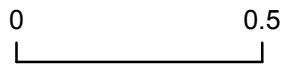
- Helispot
- - - Trail
- Non FS Land
- Wilderness
- Administrative Forest



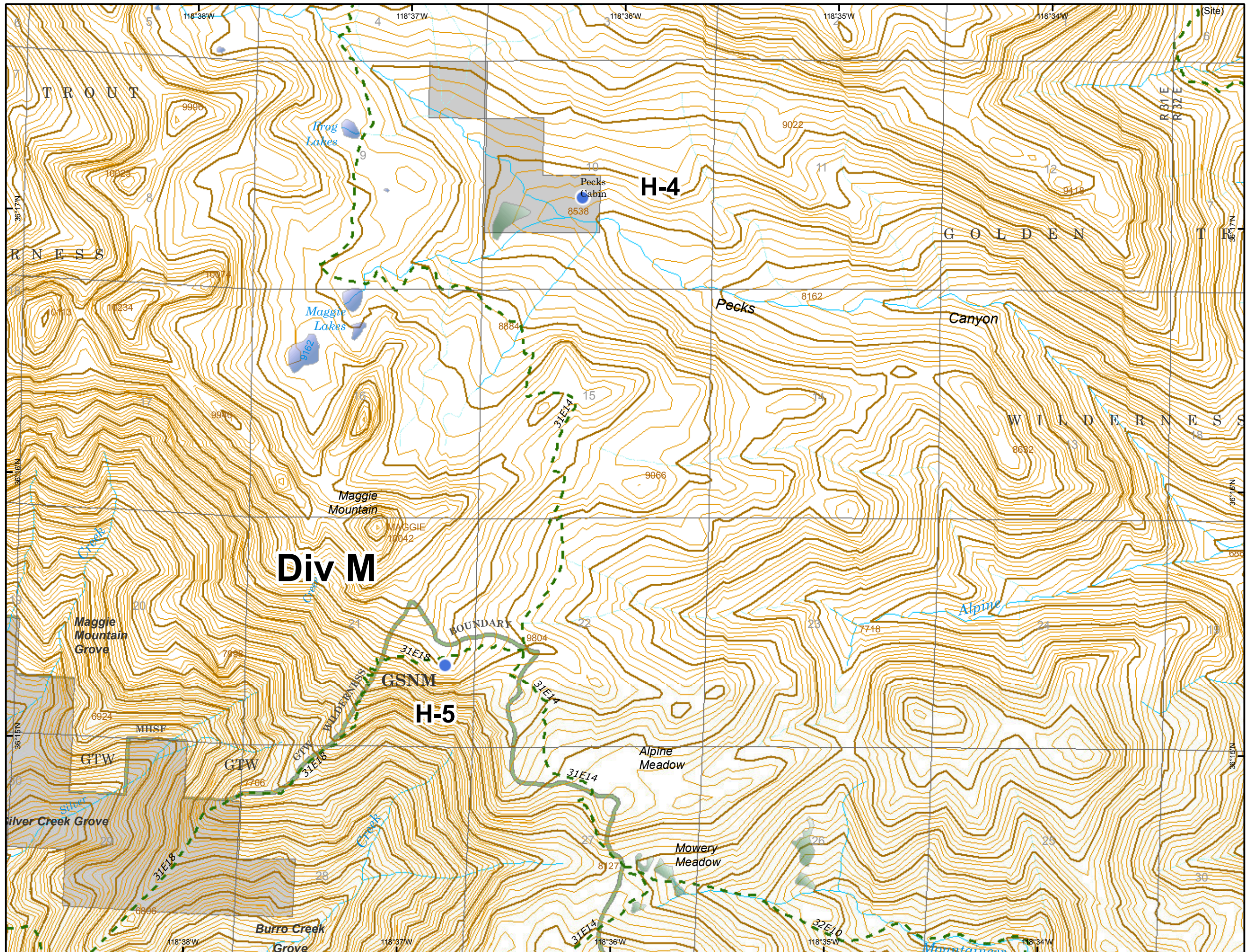
NAD83

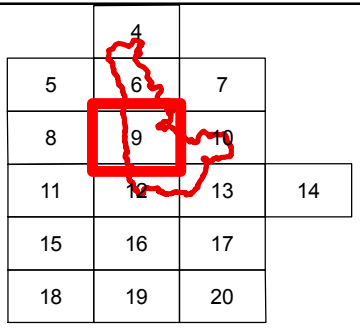


Miles

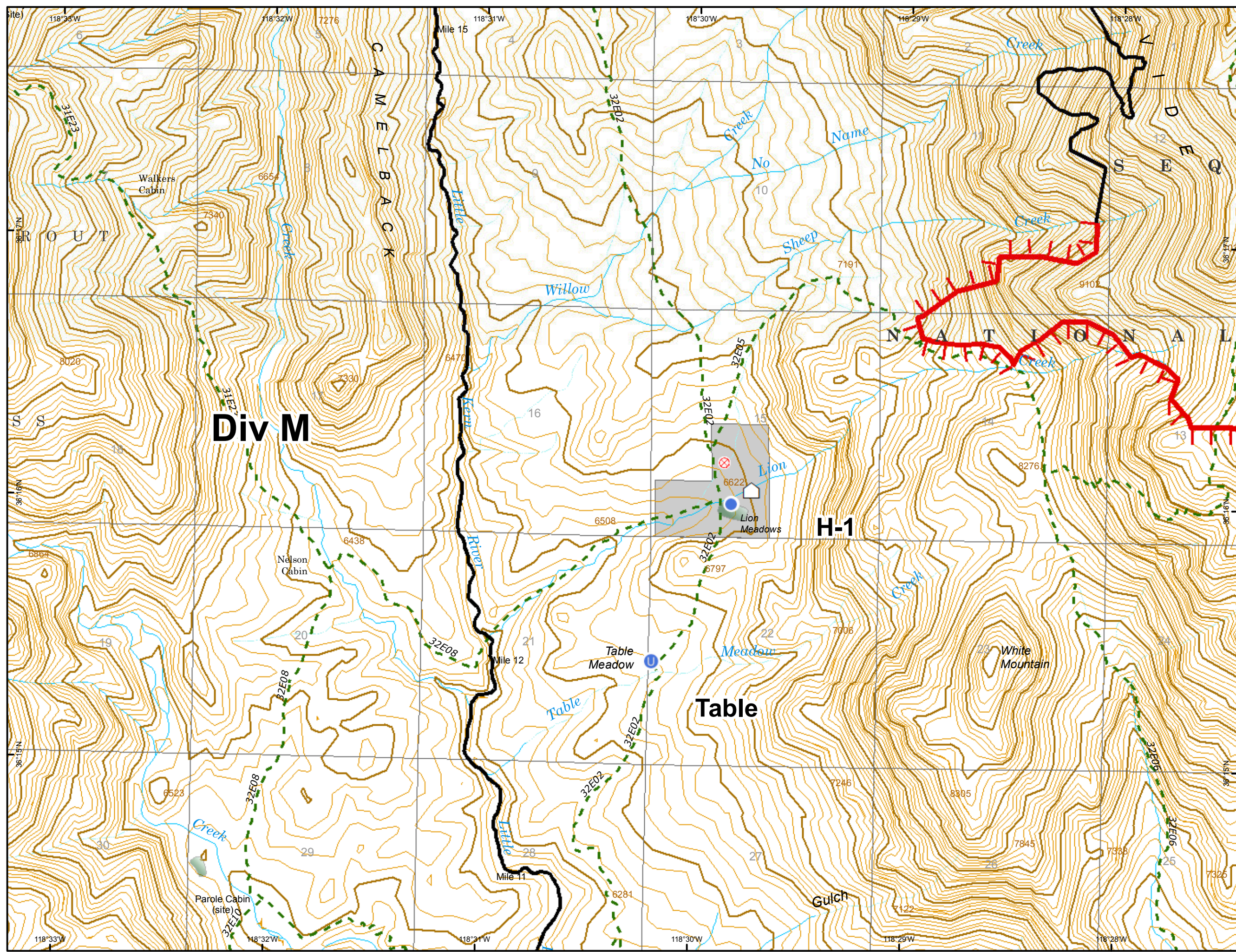
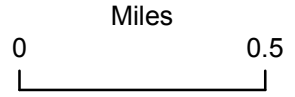


Current As Of: 10/21/2017  
 5:32:43 PM





- Legend**
- ⊗ Fire Origin
  - Ⓢ Unimproved Landing Area
  - Helispot
  - 🏠 Structures
  - Completed Line
  - ┌ Uncontrolled Fire Edge
  - - - Trail
  - Non FS Land
  - ▭ Wilderness
  - ▭ Administrative Forest



**IAP Map**  
**Lion Incident**  
**CA-SQF-002753**  
**October 22, 2017**

Page 7

|    |    |    |    |
|----|----|----|----|
|    | 4  |    |    |
| 5  | 6  | 7  |    |
| 8  | 9  | 10 |    |
| 11 | 12 | 13 | 14 |
| 15 | 16 | 17 |    |
| 18 | 19 | 20 |    |

**Legend**

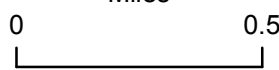
- Helispot
- ♂ Spot Fire
- Division Break
- Completed Line
- Uncontrolled Fire Edge
- Trail
- Wilderness
- Administrative Forest



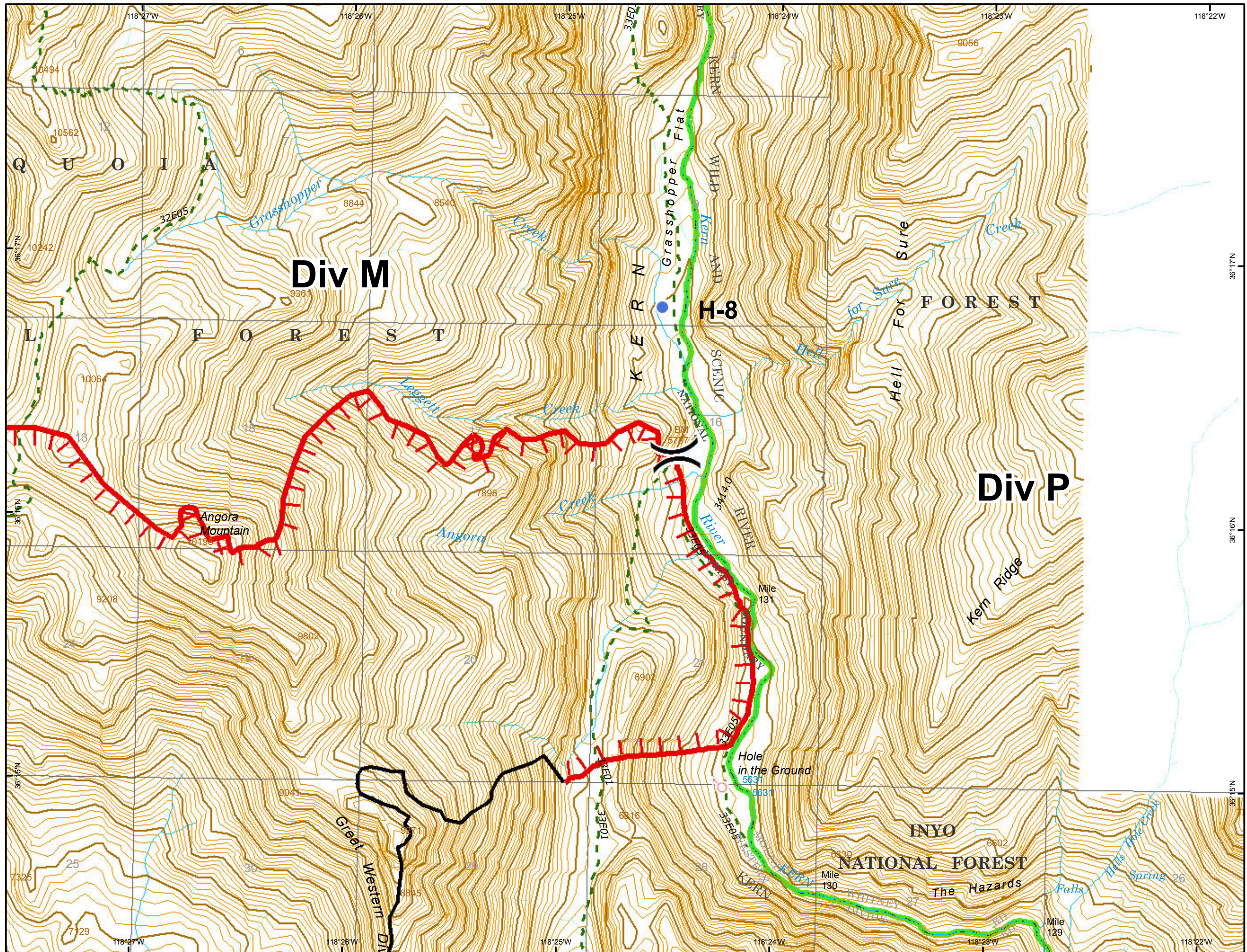
NAD83



Miles

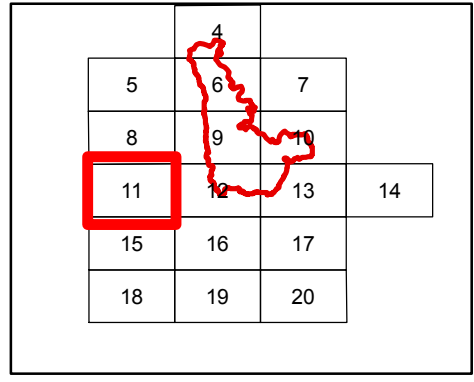


Current As Of: 10/21/2017  
 5:32:43 PM

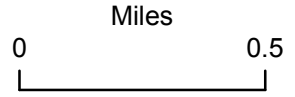


**IAP Map**  
**Lion Incident**  
**CA-SQF-002753**  
**October 22, 2017**

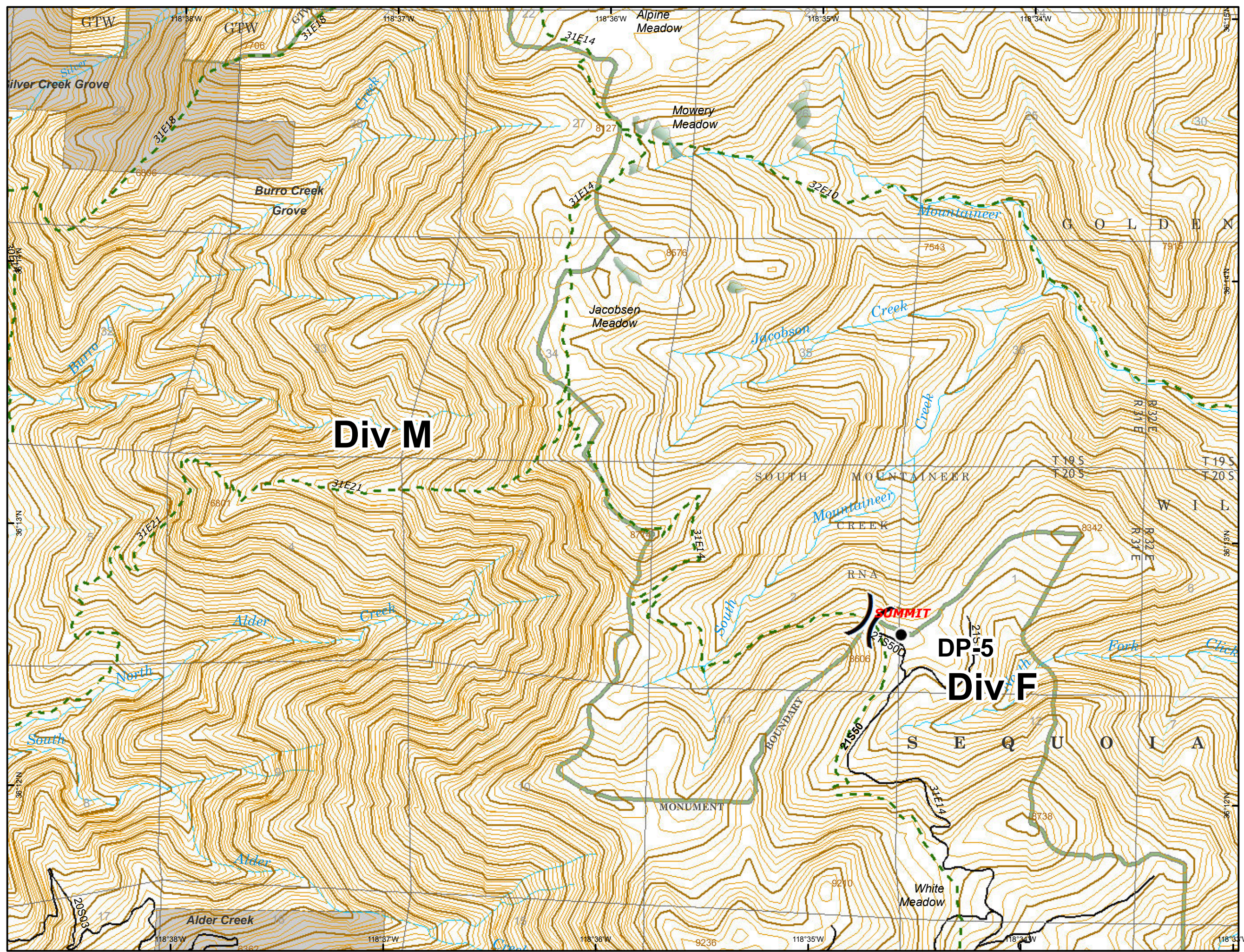
Page 8



- Legend**
- Drop Point
  - ( ) Division Break
  - - - Trail
  - Road
  - Non FS Land
  - Wilderness
  - Administrative Forest



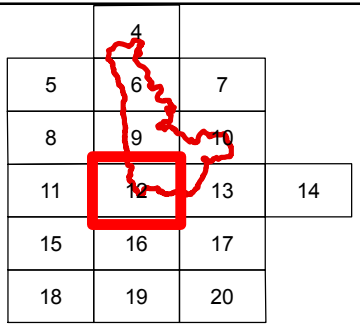
Current As Of: 10/21/2017  
 5:32:43 PM





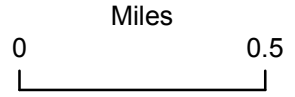
**IAP Map**  
**Lion Incident**  
**CA-SQF-002753**  
**October 22, 2017**

Page 9

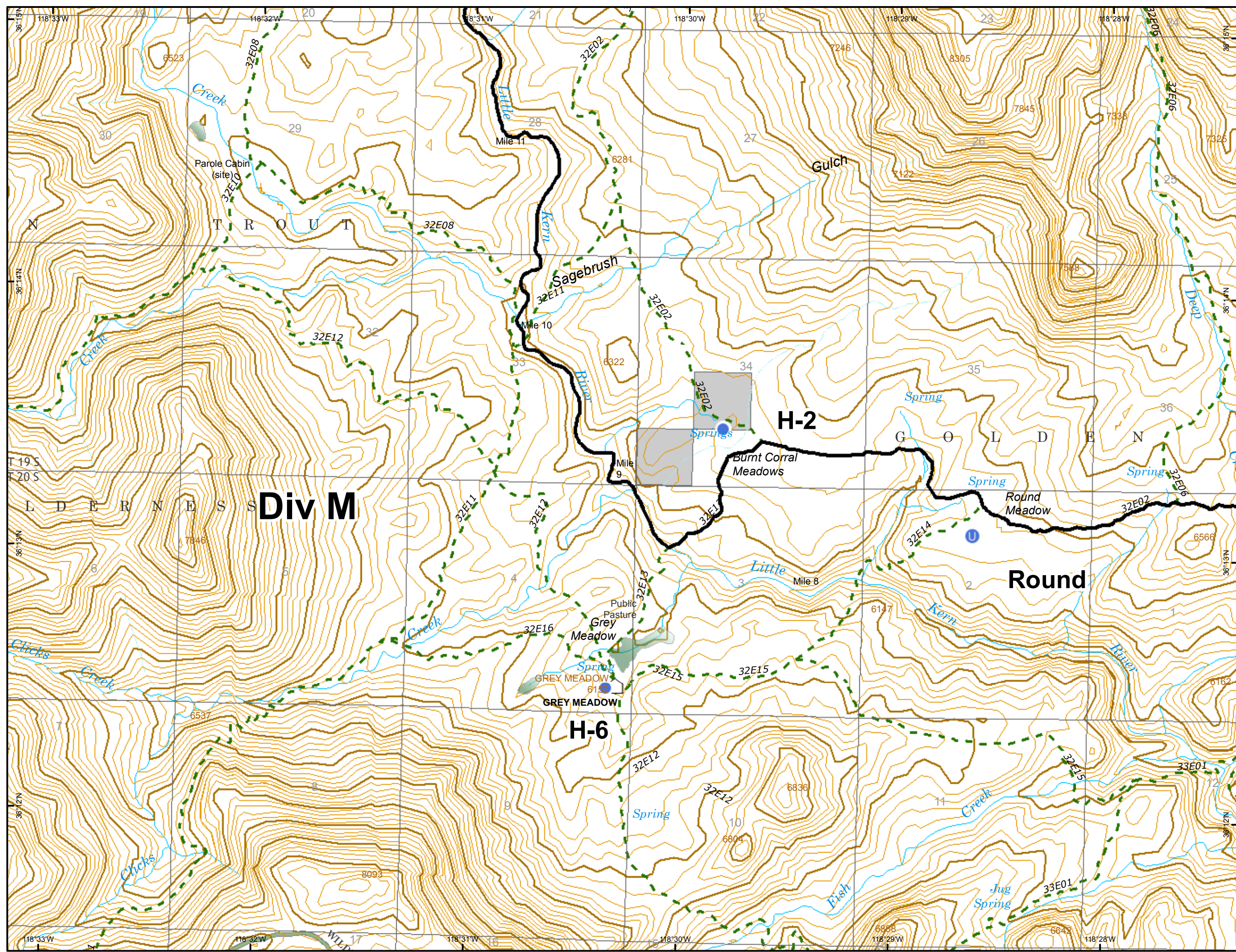


**Legend**

- Unimproved Landing Area
- Helispot
- Structures
- Completed Line
- Trail
- Non FS Land
- Wilderness
- Administrative Forest



Current As Of: 10/21/2017  
 5:32:43 PM



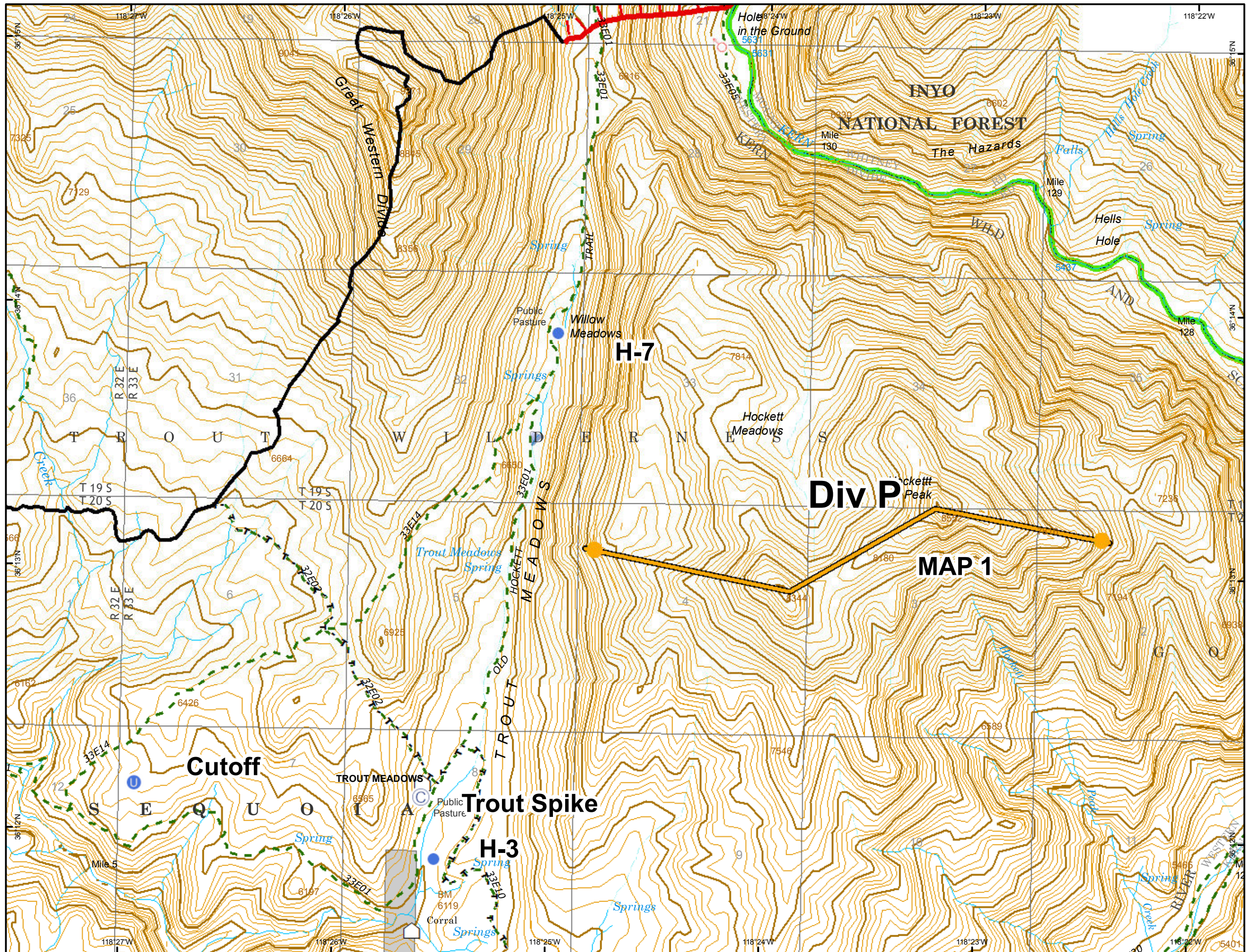
|    |    |    |    |
|----|----|----|----|
|    | 4  |    |    |
| 5  | 6  | 7  |    |
| 8  | 9  | 10 |    |
| 11 | 12 | 13 | 14 |
| 15 | 16 | 17 |    |
| 18 | 19 | 20 |    |

**Legend**

-  Camp
-  Unimproved Landing Area
-  Helispot
-  Spot Fire
-  Structures
-  Trail as Line
-  Completed Line
-  Management Action Point
-  Uncontrolled Fire Edge
-  Trail
-  Non FS Land
-  Wilderness
-  Administrative Forest



Miles  
 0 0.5






**IAP Map**  
**Lion Incident**  
**CA-SQF-002753**  
**October 22, 2017**

Page 11

|    |    |    |
|----|----|----|
|    | 4  |    |
| 5  | 6  | 7  |
| 8  | 9  | 10 |
| 11 | 12 | 13 |
| 15 | 16 | 17 |
| 18 | 19 | 20 |

**Legend**

-  Trail
-  Wilderness
-  Administrative Forest

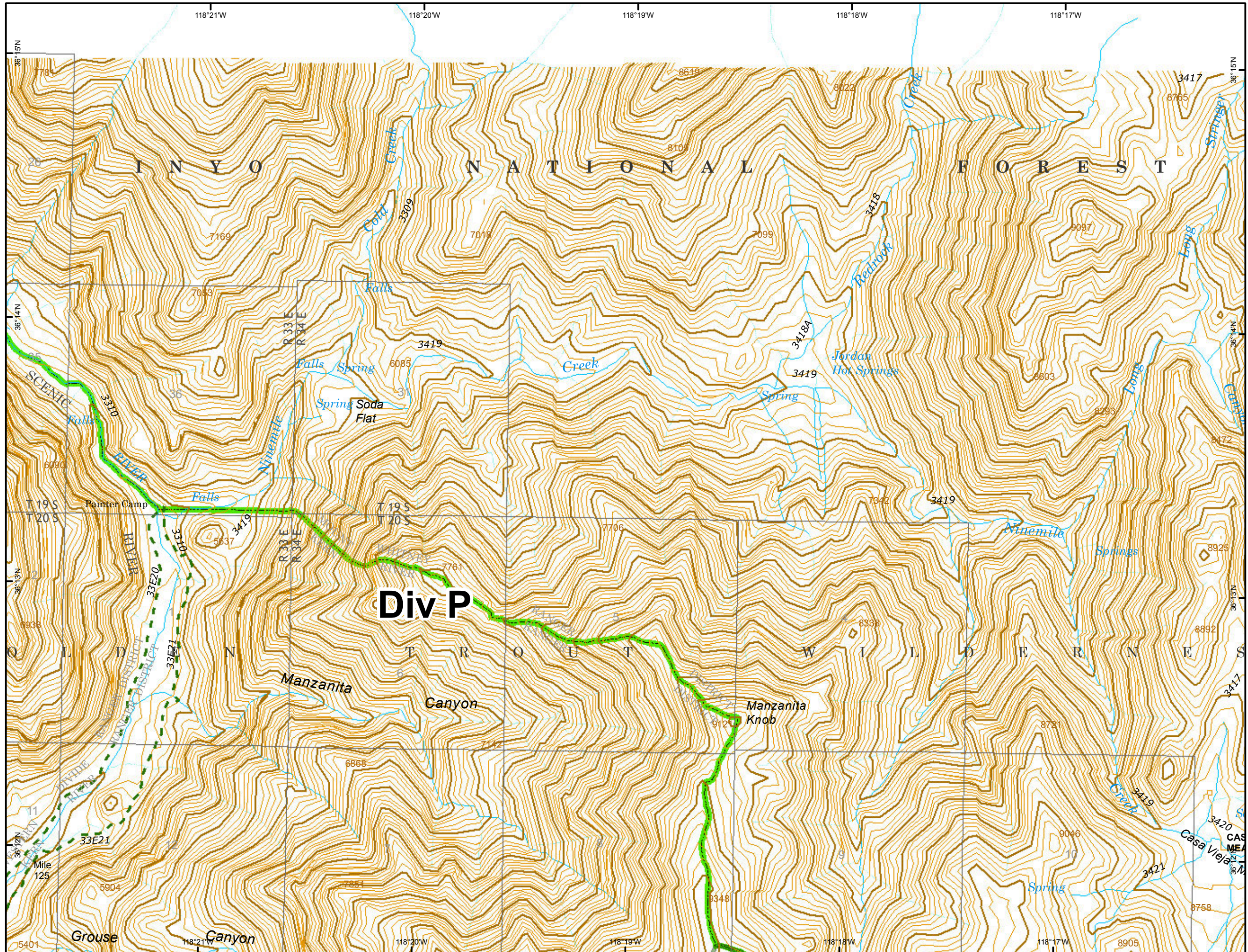


NAD83



Miles  
 0 0.5

Current As Of: 10/21/2017  
 5:32:43 PM



**IAP Map**  
**Lion Incident**  
**CA-SQF-002753**  
**October 22, 2017**

Page 12

|    |    |    |    |
|----|----|----|----|
|    | 4  |    |    |
| 5  | 6  | 7  |    |
| 8  | 9  | 10 |    |
| 11 | 12 | 13 | 14 |
| 15 | 16 | 17 |    |
| 18 | 19 | 20 |    |

**Legend**

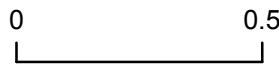
-  Water Source
-  Structures
-  Trail
-  Road
-  Non FS Land
-  Wilderness
-  Administrative Forest



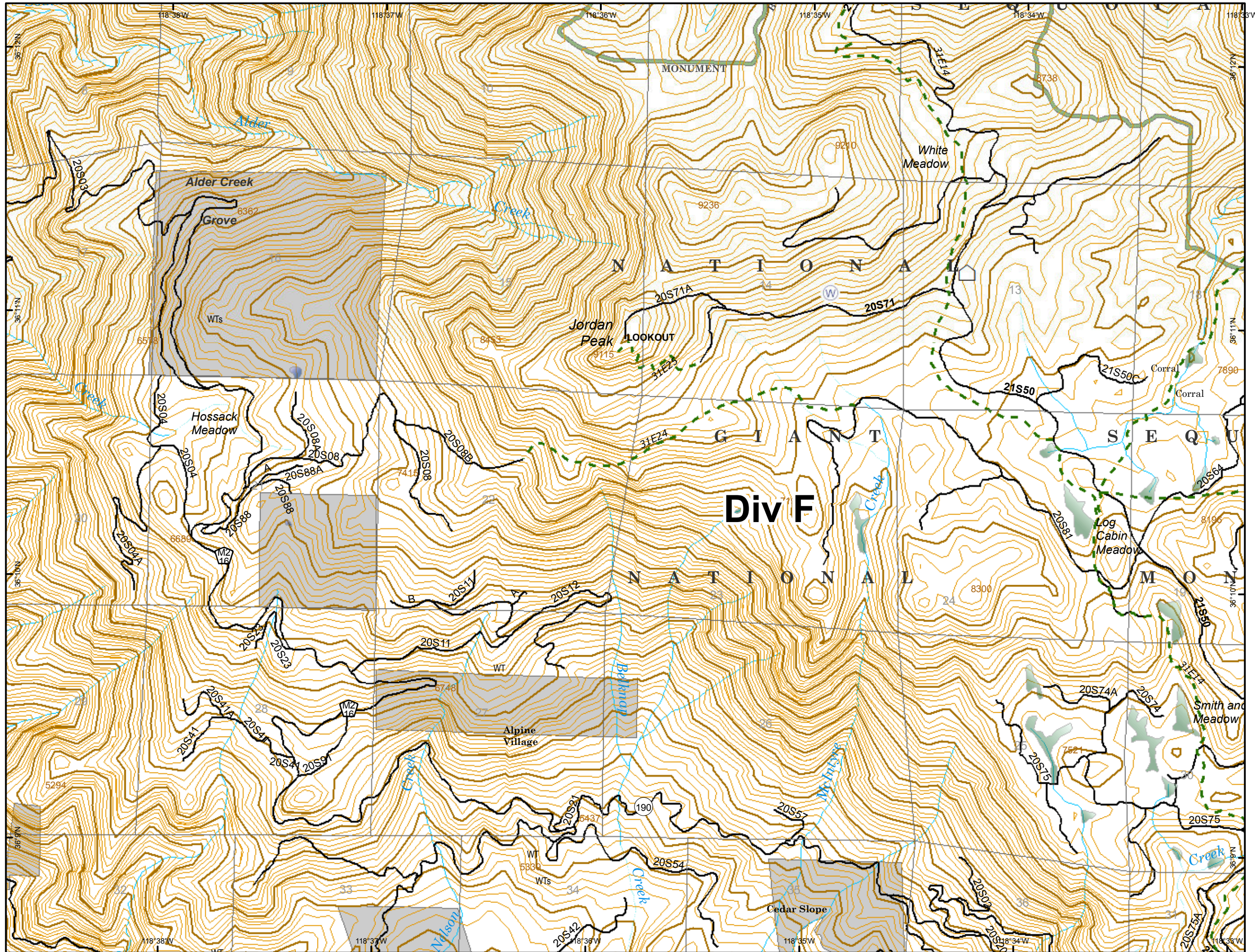
NAD83



Miles



Current As Of: 10/21/2017  
 5:32:43 PM



|    |    |    |    |  |
|----|----|----|----|--|
|    | 4  |    |    |  |
| 5  | 6  | 7  |    |  |
| 8  | 9  | 10 |    |  |
| 11 | 12 | 13 | 14 |  |
| 15 | 16 | 17 |    |  |
| 18 | 19 | 20 |    |  |

**Legend**

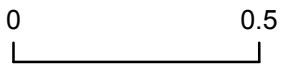
-  Drop Point
-  Water Source
-  Structures
-  Trail
-  Road
-  Wilderness
-  Administrative Forest



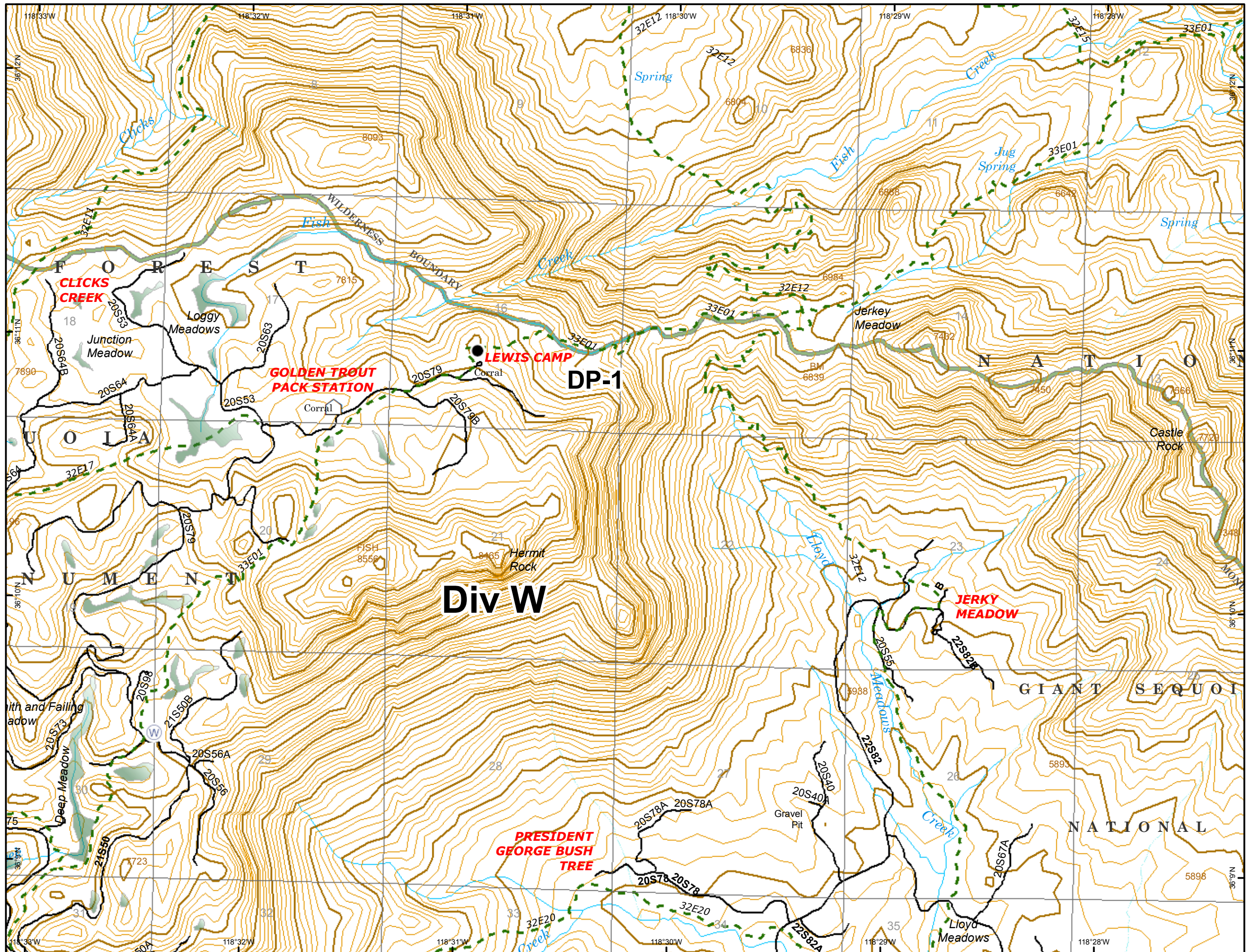
NAD83



Miles





Current As Of: 10/21/2017  
 5:32:43 PM



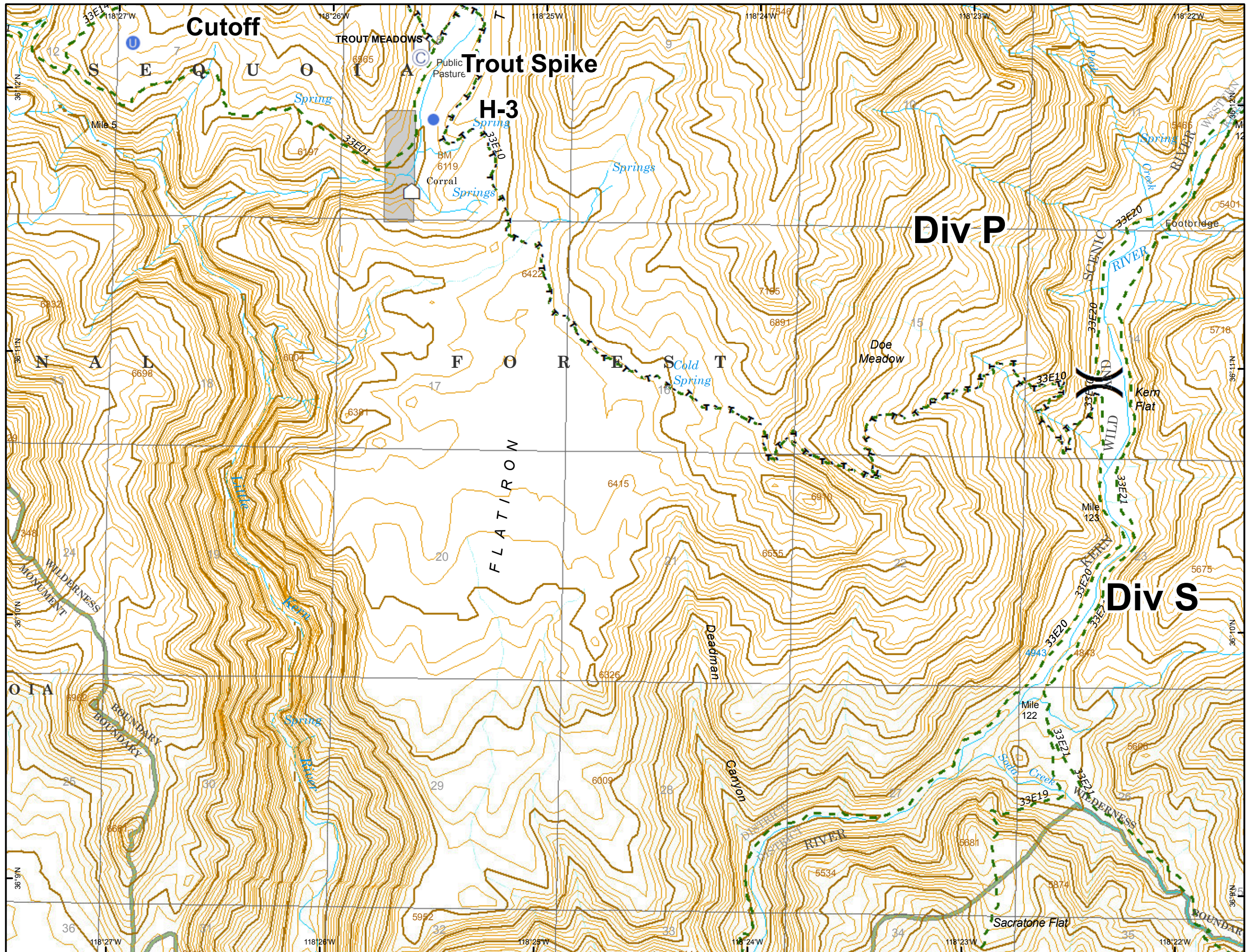
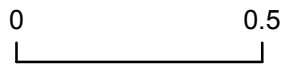
|    |    |    |    |
|----|----|----|----|
|    | 4  |    |    |
| 5  | 6  | 7  |    |
| 8  | 9  | 10 |    |
| 11 | 12 | 13 | 14 |
| 15 | 16 | 17 |    |
| 18 | 19 | 20 |    |

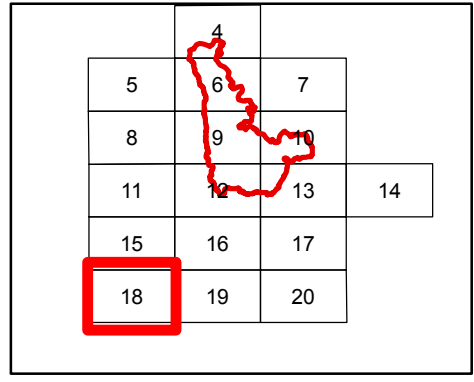
**Legend**

-  Camp
-  Unimproved Landing Area
-  Helispot
-  Structures
-  Division Break
-  Trail as Line
-  Trail
-  Non FS Land
-  Wilderness
-  Administrative Forest

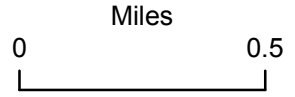
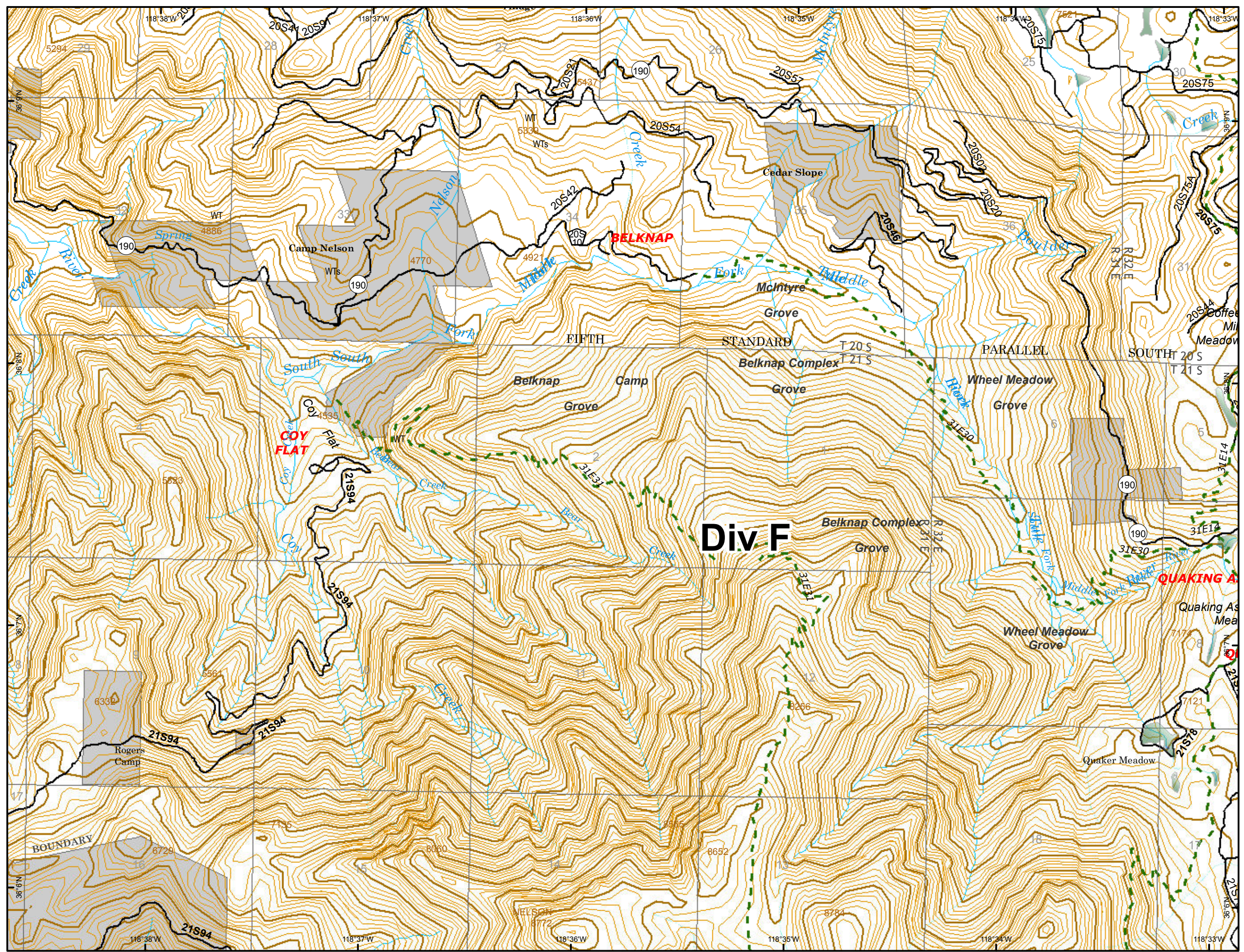


Miles





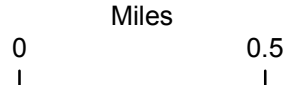
- Legend**
- Trail
  - Road
  - Non FS Land
  - Administrative Forest



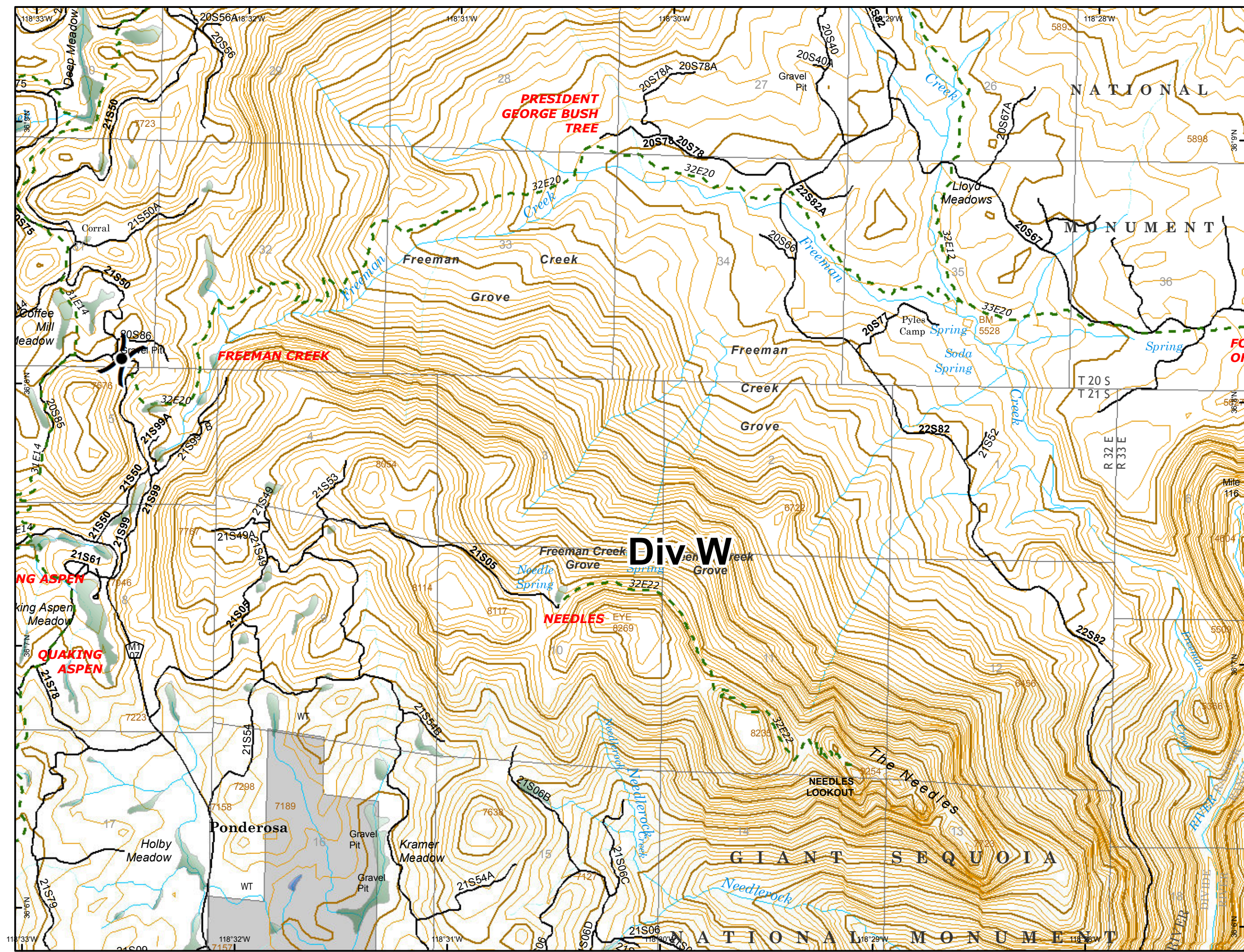
|    |    |    |    |
|----|----|----|----|
|    | 4  |    |    |
| 5  | 6  | 7  |    |
| 8  | 9  | 10 |    |
| 11 | 12 | 13 | 14 |
| 15 | 16 | 17 |    |
| 18 | 19 | 20 |    |

**Legend**

- Drop Point
- Ⓜ Water Source
- ⎓ Division Break
- - - Trail
- Road
- Non FS Land
- Administrative Forest



Current As Of: 10/21/2017  
 5:32:43 PM





|    |    |    |    |
|----|----|----|----|
|    | 4  |    |    |
| 5  | 6  | 7  |    |
| 8  | 9  | 10 |    |
| 11 | 12 | 13 | 14 |
| 15 | 16 | 17 |    |
| 18 | 19 | 20 |    |

- Legend**
- Drop Point
  - ⌋ Division Break
  - - - Trail
  - Road
  - ▭ Wilderness
  - ▭ Administrative Forest

