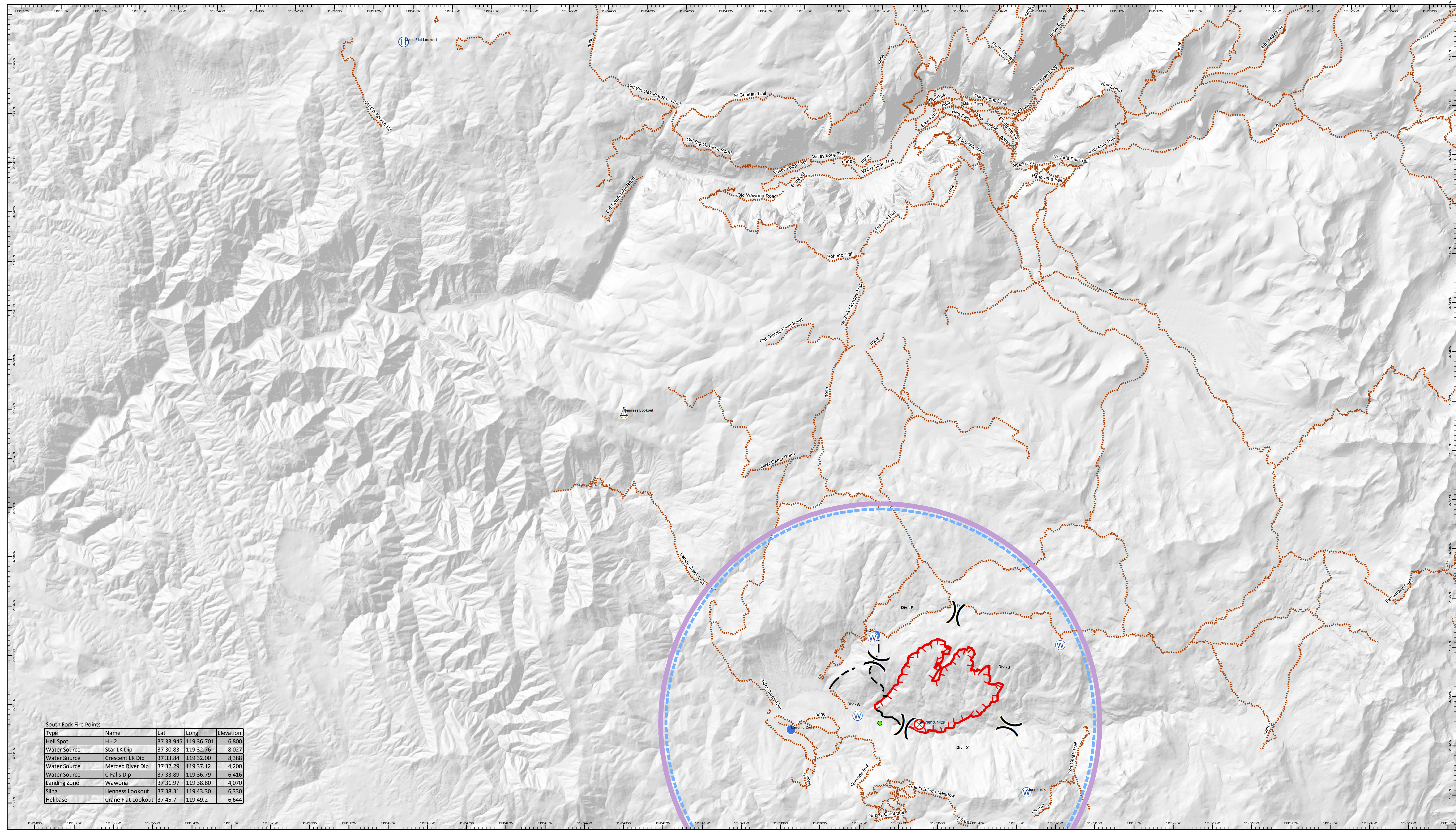
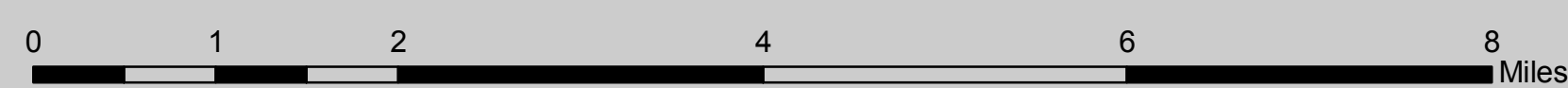
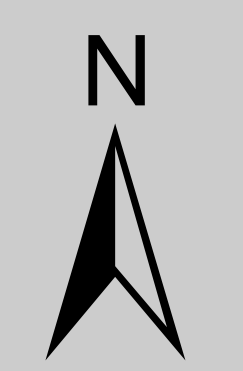


Air operations South Fork CA-YNP-000108 8/17/2017



South Fork Fire Points

Type	Name	Lat	Long	Elevation
Heli Spot	H - 2	37 33.945	119 36.701	6,800
Water Source	Star LK Dip	37 30.83	119 32.76	8,027
Water Source	Crescent LK Dip	37 33.84	119 32.00	8,388
Water Source	Merced River Dip	37 32.29	119 37.12	4,200
Water Source	C Falls Dip	37 33.89	119 36.79	6,416
Landing Zone	Wawona	37 31.97	119 38.80	4,070
Sling	Hennes Lookout	37 38.31	119 43.30	6,330
Helibase	Crane Flat Lookout	37 45.7	119 49.2	6,644



### Legend

- TFR
- Fire Origin
- Sling Site
- Uncontrolled Fire Edge
- Planned Fire Line
- Helibase
- Water Source
- Completed Line
- Trail
- Helispot
- Division

