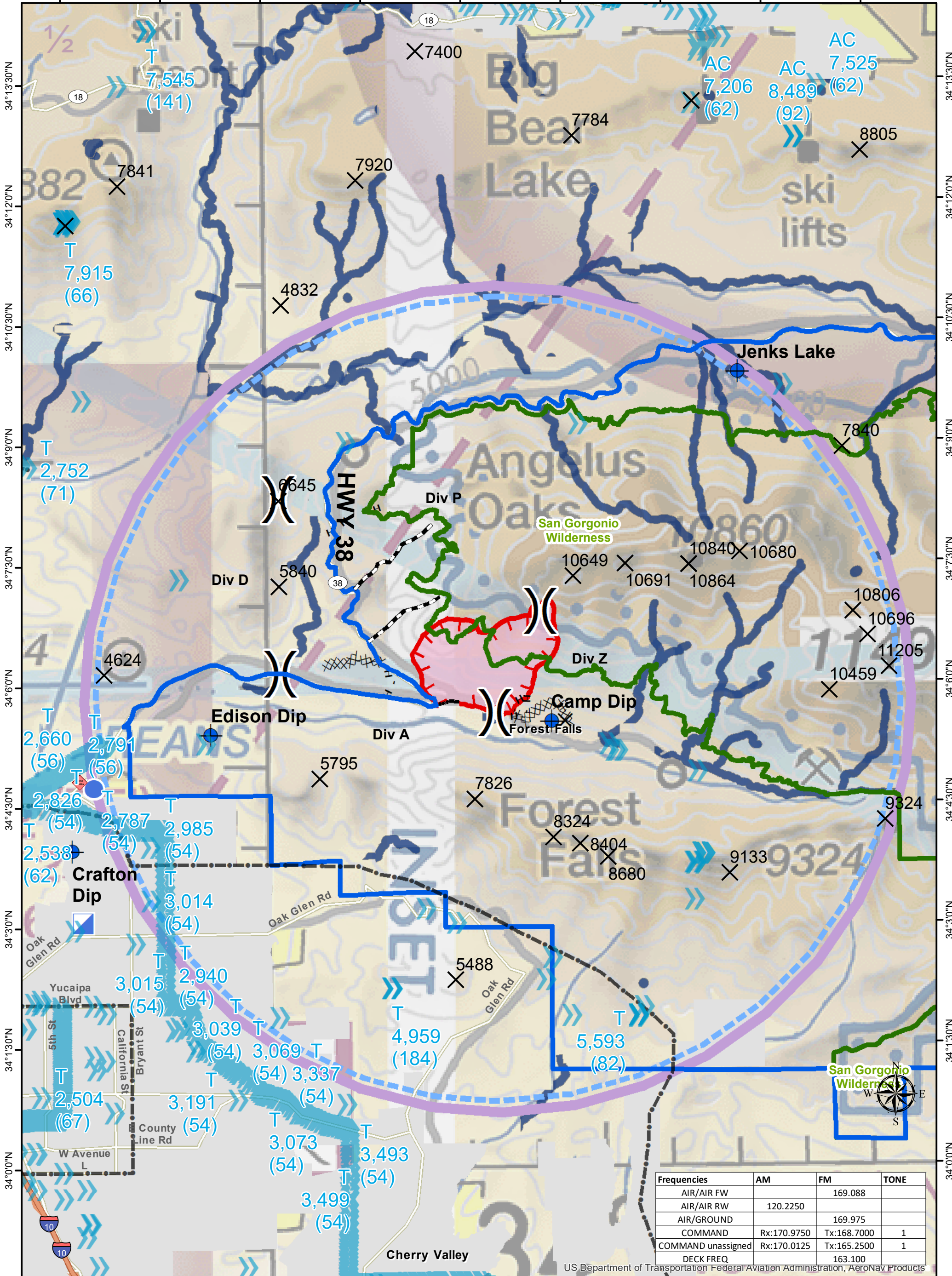


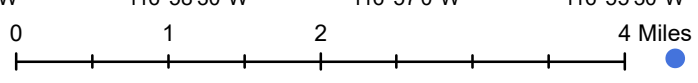
117°3'0"W 117°1'30"W 117°0'0"W 116°58'30"W 116°57'0"W 116°55'30"W 116°54'0"W 116°52'30"W 116°51'0"W



34°13'30"N
34°12'0"N
34°10'30"N
34°9'0"N
34°7'30"N
34°6'0"N
34°4'30"N
34°3'0"N
34°1'30"N
34°0'0"N

Frequencies	AM	FM	TONE
AIR/AIR FW		169.088	
AIR/AIR RW	120.2250		
AIR/GROUND		169.975	
COMMAND	Rx:170.9750	Tx:168.7000	1
COMMAND unassigned	Rx:170.0125	Tx:165.2500	1
DECK FREQ		163.100	

US Department of Transportation Federal Aviation Administration, AeroNav Products



Created: 07/07/2018 22:15 By:DH 1:80,000

- () Division Break
- (X) Summits
- (X) Proposed Dozer Line
- (X) Road Closure
- (X) Incident Command Post
- (X) Fire Retardant Avoidance
- (X) Helispot
- (X) Dip Site
- (X) TFR
- (X) Uncontrolled Fire Edge
- (X) Completed Line
- (X) Completed Dozer Line
- (X) H - H Completed Hand Line
- (X) Operational Area
- (X) USFS Wilderness
- (X) Fire Perimeter