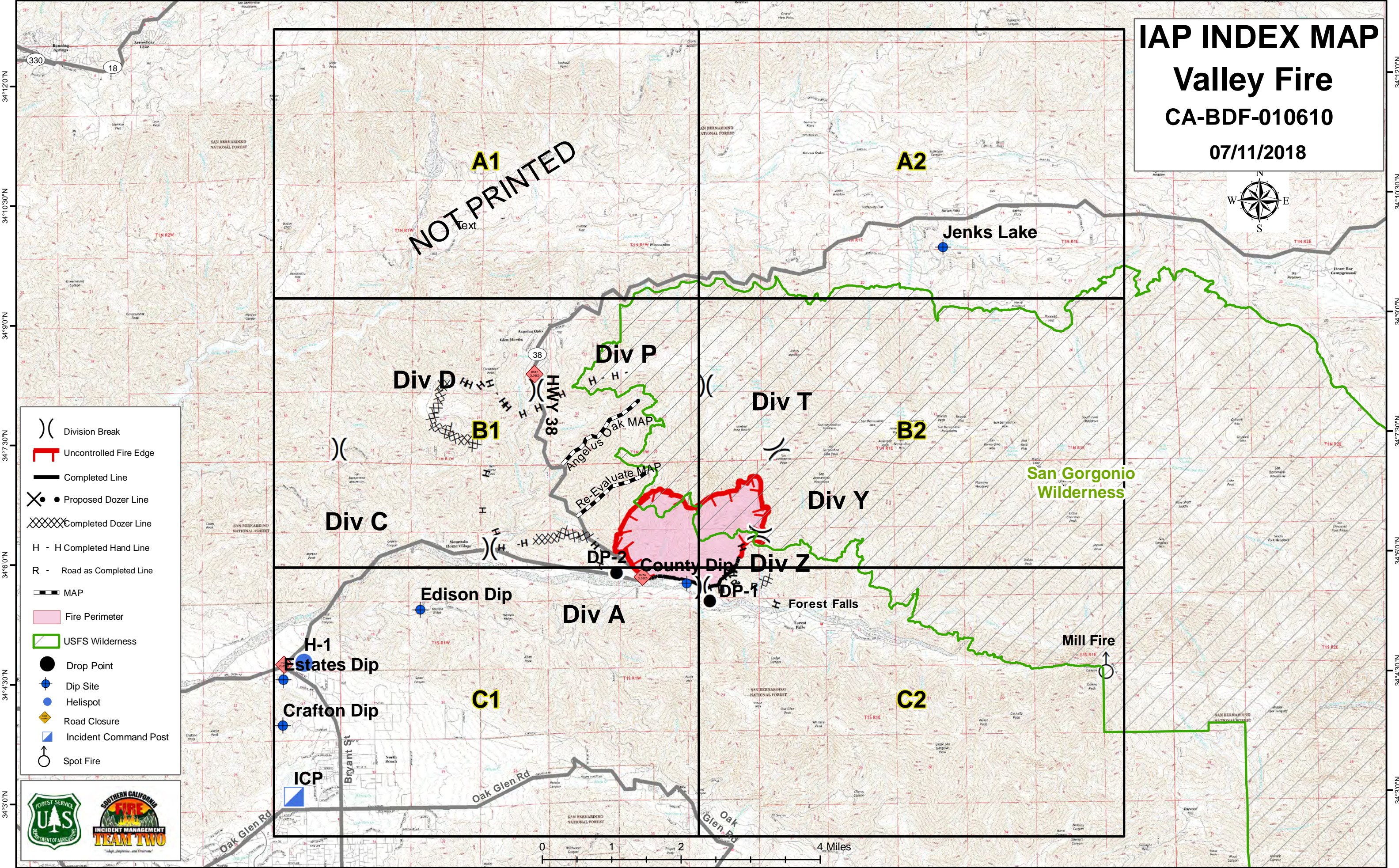


117°6'0"W 117°4'30"W 117°3'0"W 117°1'30"W 117°0'0"W 116°58'30"W 116°57'0"W 116°55'30"W 116°54'0"W 116°52'30"W 116°51'0"W 116°49'30"W 116°48'0"W 116°46'30"W



IAP INDEX MAP

Valley Fire

CA-BDF-010610

07/11/2018



- Division Break
- Uncontrolled Fire Edge
- Completed Line
- Proposed Dozer Line
- Completed Dozer Line
- Completed Hand Line
- Road as Completed Line
- MAP
- Fire Perimeter
- USFS Wilderness
- Drop Point
- Dip Site
- Helispot
- Road Closure
- Incident Command Post
- Spot Fire



0 1 2 4 Miles

117°6'0"W 117°4'30"W 117°3'0"W 117°1'30"W 117°0'0"W 116°58'30"W 116°57'0"W 116°55'30"W 116°54'0"W 116°52'30"W 116°51'0"W 116°49'30"W 116°48'0"W 116°46'30"W

34°12'0"N
34°10'30"N
34°9'0"N
34°7'30"N
34°6'0"N
34°4'30"N
34°3'0"N

34°12'0"N
34°10'30"N
34°9'0"N
34°7'30"N
34°6'0"N
34°4'30"N
34°3'0"N