

117°0'0"W

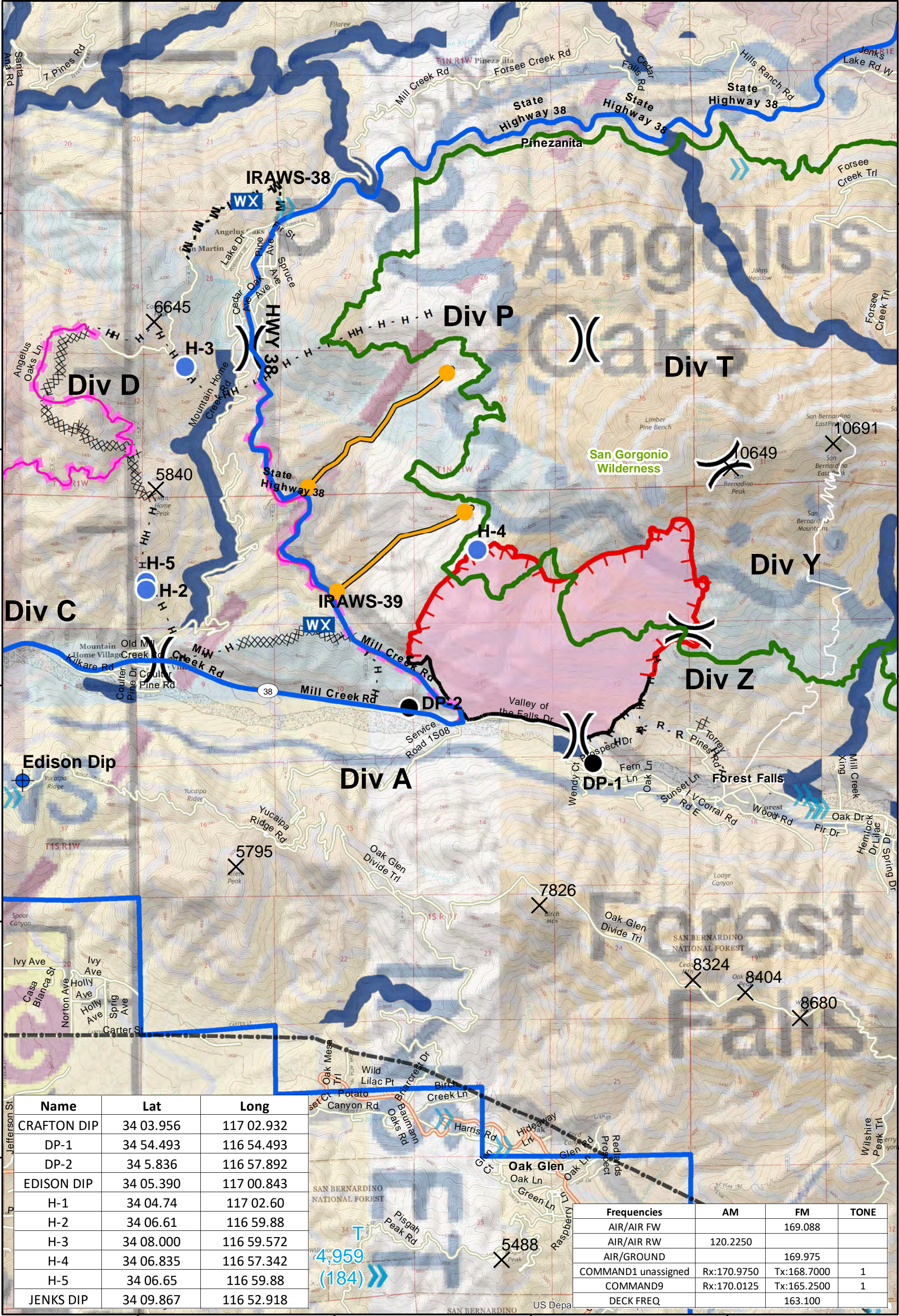
116°58'30"W

116°57'0"W

116°55'30"W

34°9'0"N  
34°7'30"N  
34°6'0"N  
34°4'30"N  
34°3'0"N

34°9'0"N  
34°7'30"N  
34°6'0"N  
34°4'30"N  
34°3'0"N



Name	Lat	Long
CRAFTON DIP	34 03.956	117 02.932
DP-1	34 54.493	116 54.493
DP-2	34 5.836	116 57.892
EDISON DIP	34 05.390	117 00.843
H-1	34 04.74	117 02.60
H-2	34 06.61	116 59.88
H-3	34 08.000	116 59.572
H-4	34 06.835	116 57.342
H-5	34 06.65	116 59.88
JENKS DIP	34 09.867	116 52.918

Frequencies	AM	FM	ZONE
AIR/AIR FW		169.088	
AIR/AIR RW	120.2250		
AIR/GROUND		169.975	
COMMAND1 unassigned	Rx:170.9750	Tx:168.7000	1
COMMAND9	Rx:170.0125	Tx:165.2500	1
DECK FREQ		163.100	

**AIR OPS MAP**  
Valley Fire  
CA-BDF-010610  
July 13, 2018

- Uncontrolled Fire Edge
- Completed Line
- Completed Dozer Line
- Completed Hand Line
- Road as Completed Line
- Masticator Line
- Mobile Weather Unit
- Fire Retardant Avoidance
- Operational Area
- USFS Wilderness
- Fire Perimeter

**AIR-OPS MAP**  
**Valley Fire**  
**CA-BDF-010610**  
**07/13/2018**

- Brush/Chip Completed
- Road Closure
- Incident Command Post
- Division Break
- Helispot
- Dip Site
- Drop Point
- Summits

Scale: 1:40,000

0 0.25 0.5 1 Miles