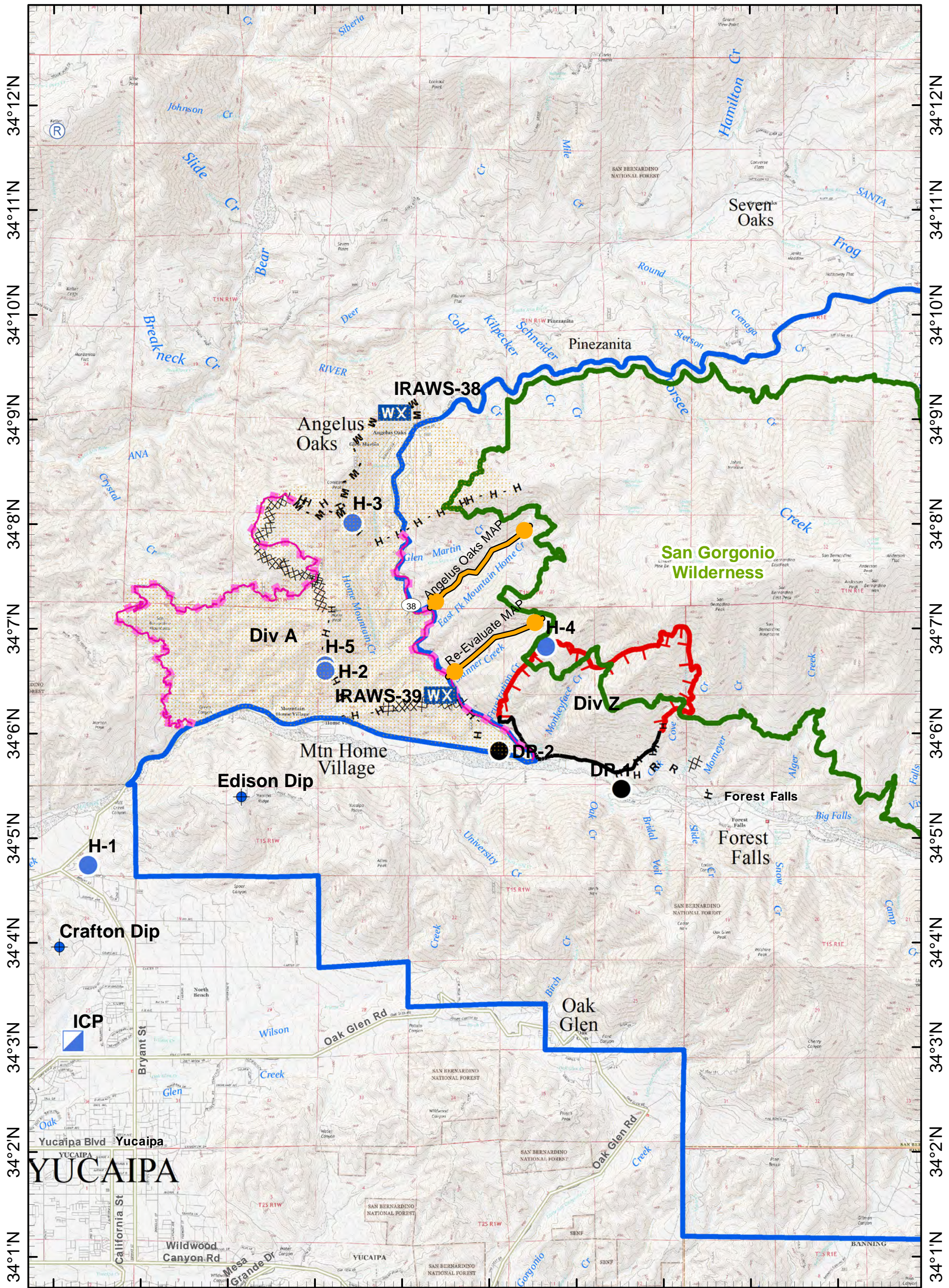


117°3'W 117°2'W 117°1'W 117°0'W 116°59'W 116°58'W 116°57'W 116°56'W 116°55'W 116°54'W



117°3'W 117°2'W 117°1'W 117°0'W 116°59'W 116°58'W 116°57'W 116°56'W 116°55'W 116°54'W

OPS MAP
Valley Fire
CA-BDF-010610
7/16-19/2018

OPERATIONS MAP
Valley Fire
CA-BDF-010610
July 16-19 2018
0600-0700

Uncontrolled Fire Edge
Completed Line
Completed Dozer Line
Completed Hand Line
Road as Completed Line
Masticator Line
MAP

Division Break
Incident Command Post
Mobile Weather Unit
Brush/Chip Completed

Uncontrolled Fire Edge
Completed Line
Completed Dozer Line
Completed Hand Line
Road as Completed Line
Masticator Line
MAP

Operational Area
USFS Wilderness
Div A area
Helispot
Dip Site
Drop Point

0 0.25 0.5 1
Mile