

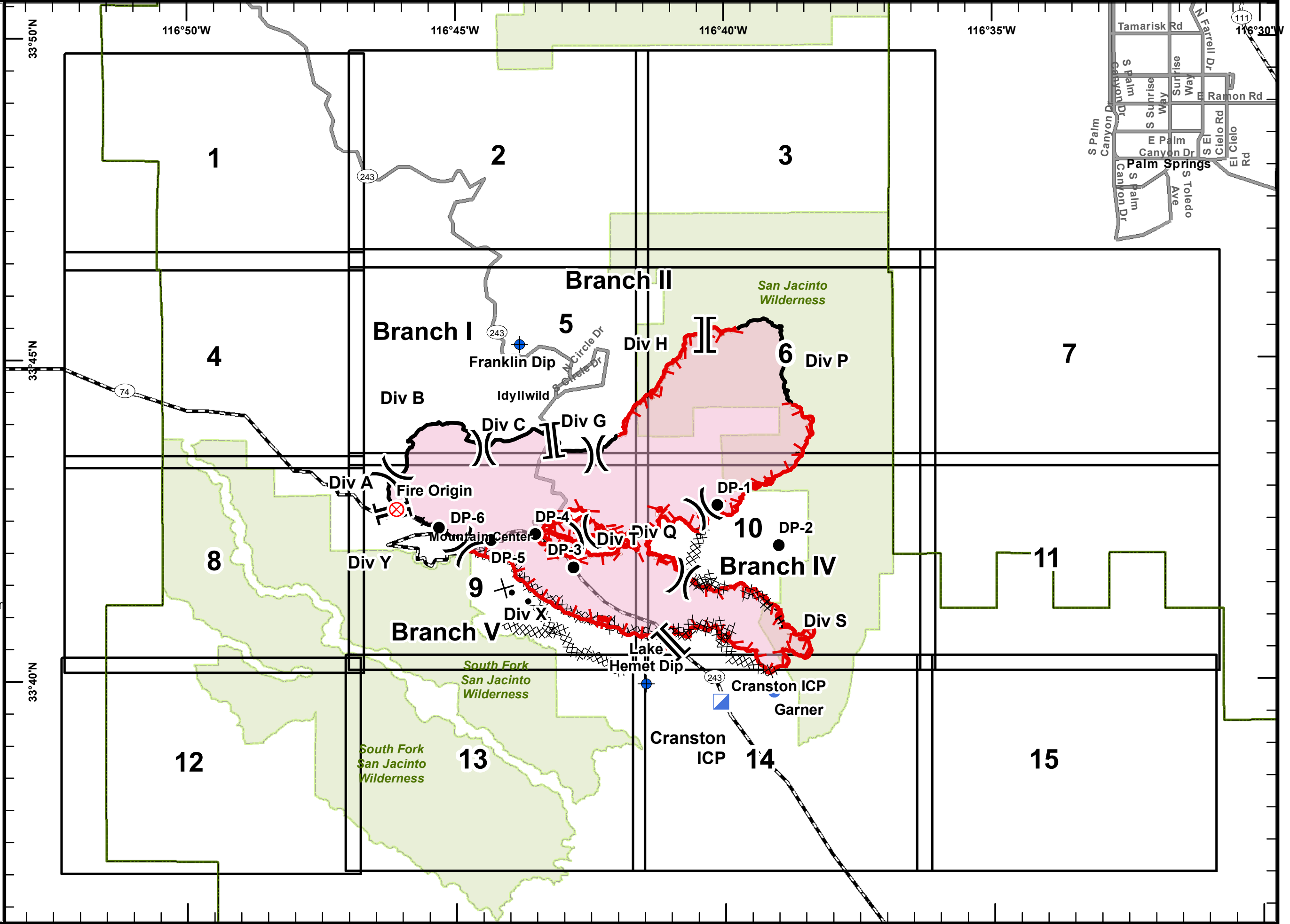
Cranston Fire
CA-BDF-0011390
7/29/2018
Day
NAD83
IAP Index

- Dip Site
- Drop Point
- Fire Origin
- Helispot
- Incident Command Post
- Division Break
- Branch Break
- Uncontrolled Fire Edge
- Completed Line
- Completed Dozer Line
- Completed Hand Line
- Proposed Dozer Line
- Wildfire Daily Fire Perimeter
- National Forest Boundary
- Wilderness Boundary



0 1 2
Miles

MRH
7/29/2018
2045 Hours

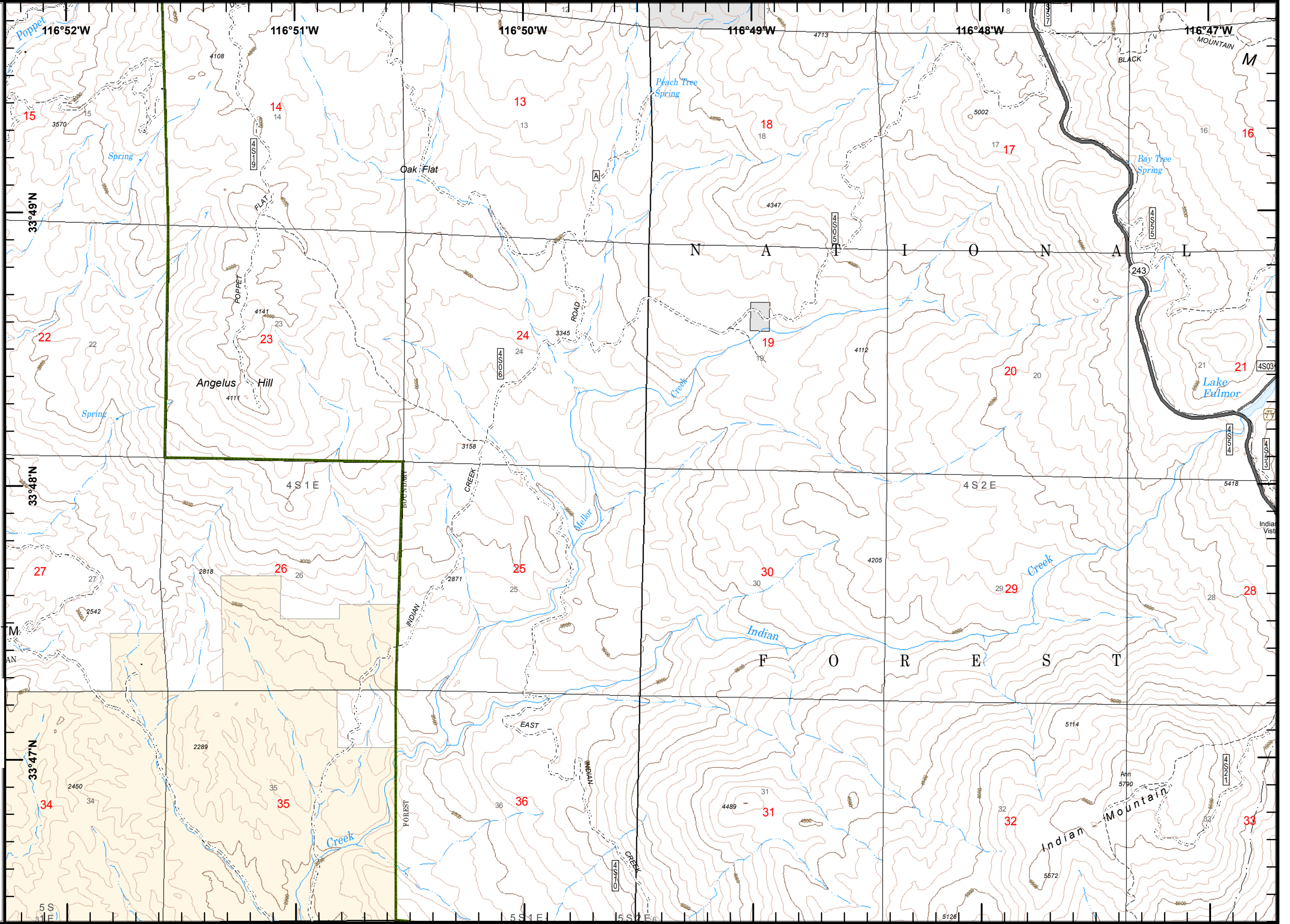
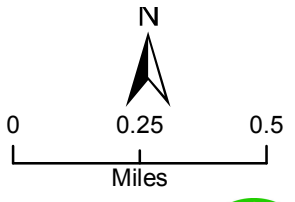


Cranston Fire
CA-BDF-0011390
7/29/2018
Day
NAD83
Map Page 1

- Drop Point
- ⊗ Fire Origin
- ▣ Incident Command Post
- ⌘ Division Break
- ⌚ Branch Break
- ▭ Administrative Forest
- ⤵ Highway
- ⤵ Road - Light Duty - Paved
- ⤵ Road - Light Duty - Unspecified Composition
- ⤵ Road - Unimproved
- ⤵ Trail
- ⤵ Indian Land
- ⤵ National Rec/Scenic Area
- ▭ PRO_Indian_Lands_Clip_U
- ▭ Non-FS Lands

Tile Location

1	2	3
4	5	6
8	9	10
12	13	14

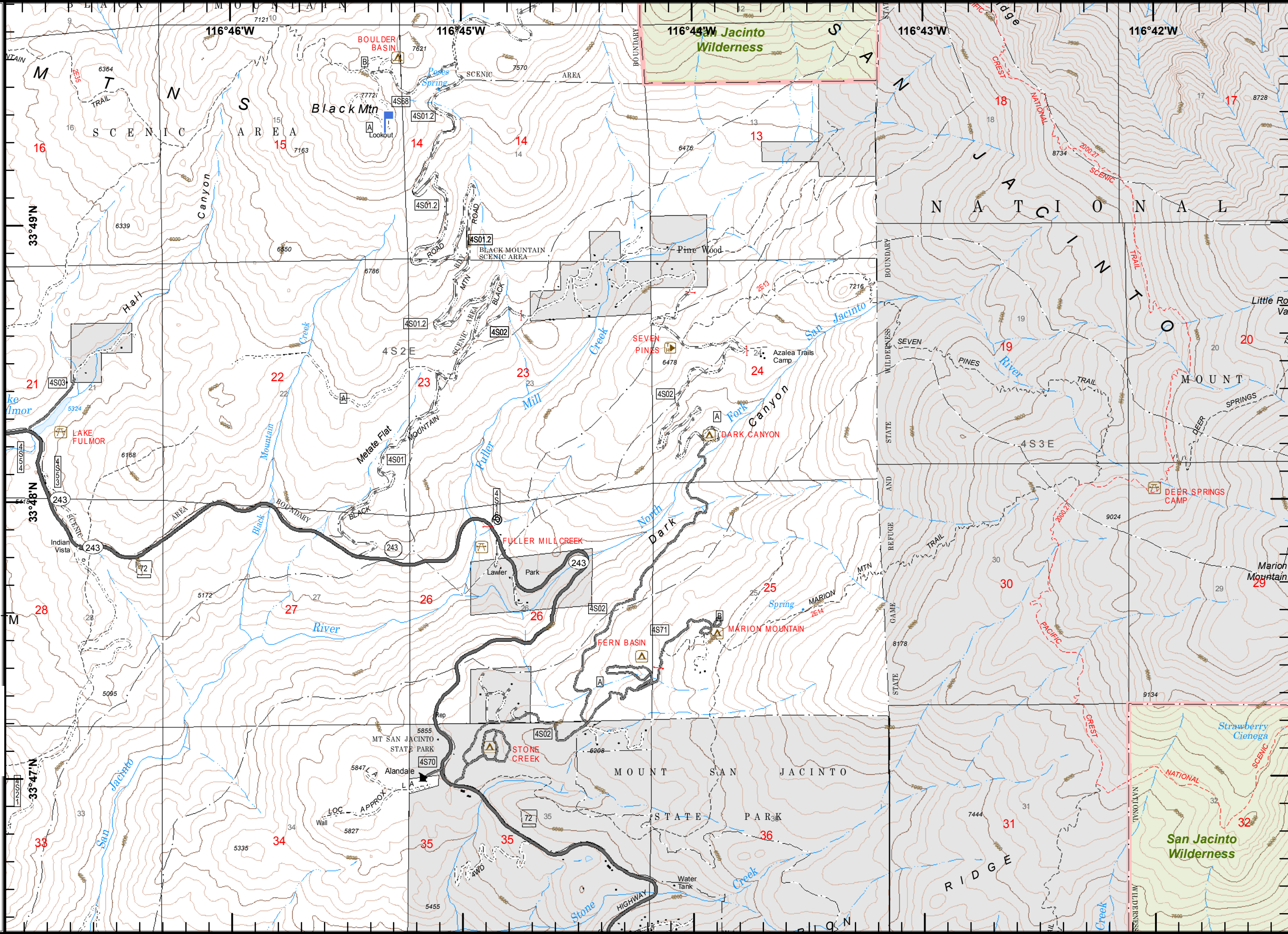
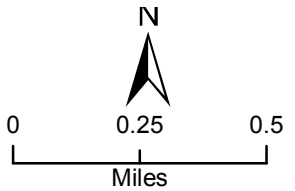


Cranston Fire
CA-BDF-0011390
7/29/2018
Day
NAD83
Map Page 2

- Drop Point
- ⊗ Fire Origin
- ▣ Incident Command Post
- ⌋ Division Break
- ⌌ Branch Break
- ▭ Administrative Forest
- Highway
- Road - Light Duty - Dirt
- Road - Light Duty - Paved
- Road - Unimproved
- - - Trail
- - - Trail - Nat Rec/Scenic/Historic
- - - National Rec/Scenic Area
- - - State/County Special Area
- ▭ PRO_Indian_Lands_Clip_U
- ▭ Non-FS Lands
- ▭ Wilderness

Tile Location

1	2	3
4	5	6
8	9	10
12	13	14

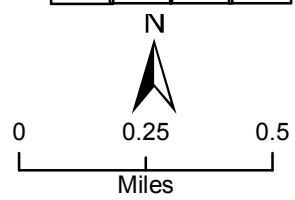


Cranston Fire
CA-BDF-0011390
7/29/2018
Day
NAD83
Map Page 3

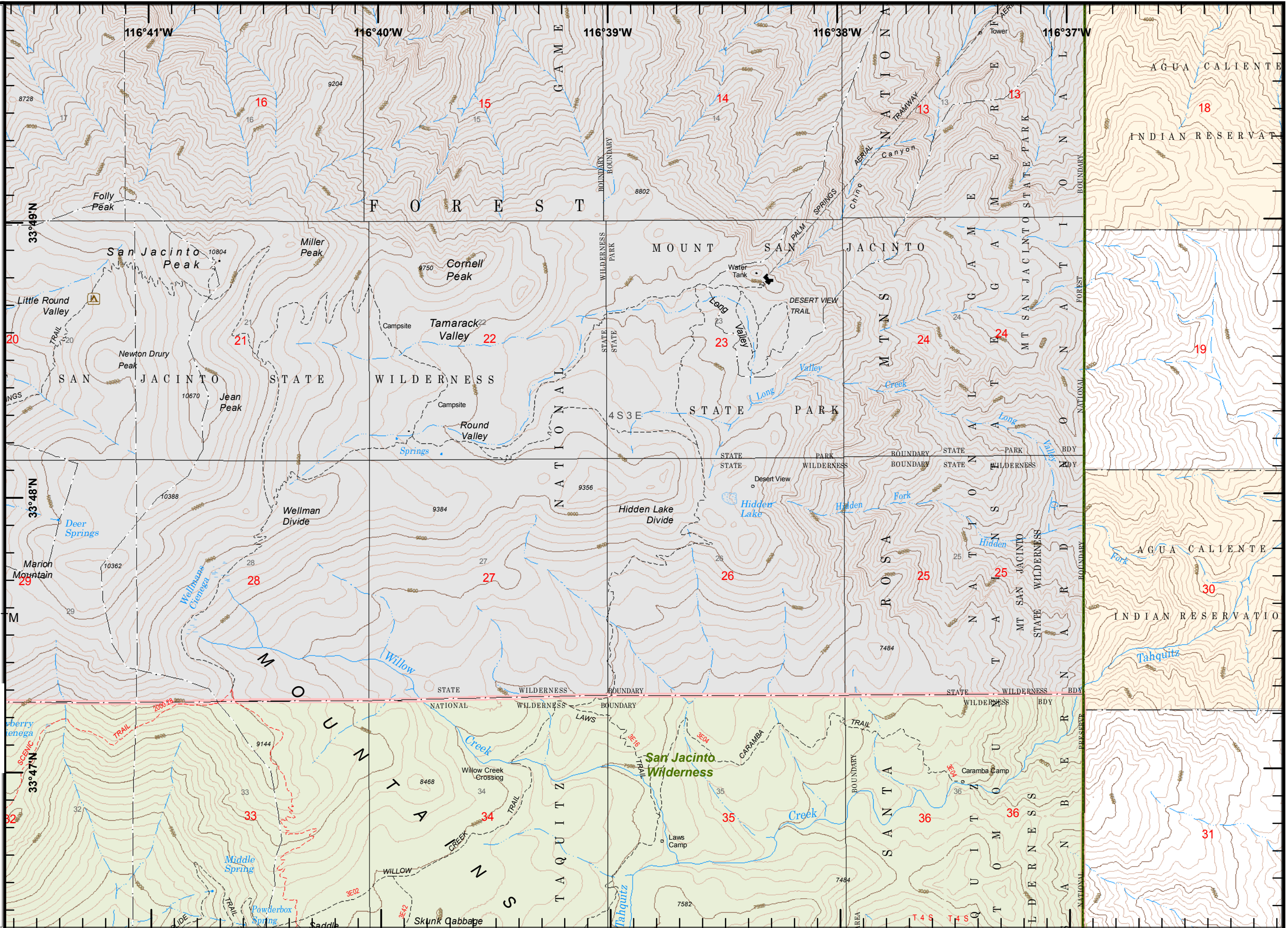
- Drop Point
- ⊗ Fire Origin
- ▣ Incident Command Post
- ⌋ Division Break
- ⌌ Branch Break
- ▭ Administrative Forest
- ⋯ Trail
- ⋯ Trail - Nat Rec/Scenic/Historic
- ⋯ Indian Land
- ⋯ State/County Special Area
- ▭ PRO_Indian_Lands_Clip_UTM
- ▭ Non-FS Lands
- ▭ Wilderness

Tile Location

1	2	3	4
4	5	6	7
8	9	10	11
12	13	14	15



MRH
7/29/2018
2055 Hours

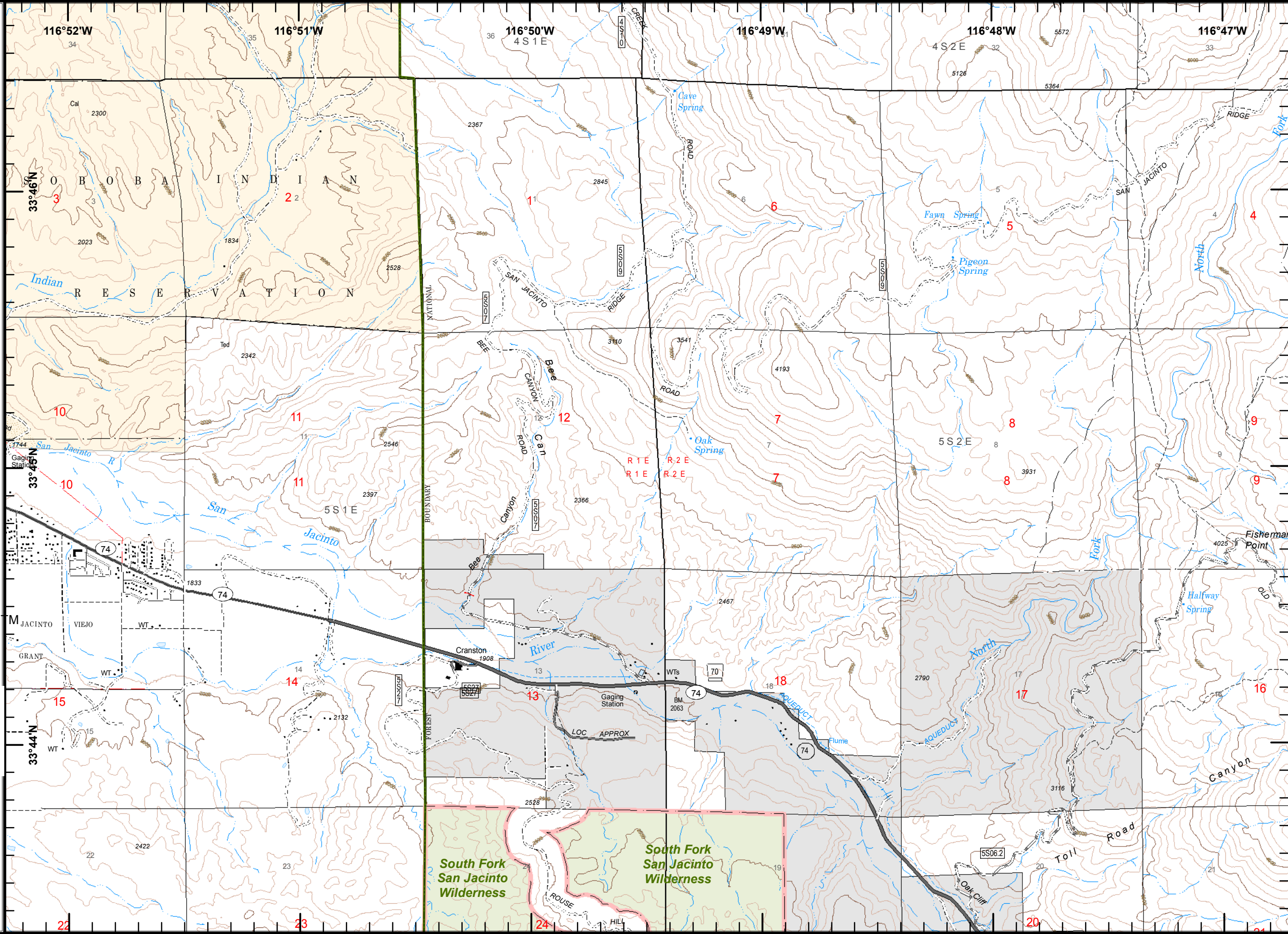
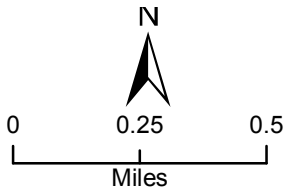


Cranston Fire
CA-BDF-0011390
7/29/2018
Day
NAD83
Map Page 4

- Drop Point
- ⊗ Fire Origin
- ▣ Incident Command Post
- ⌘ Division Break
- ⌘ Branch Break
- ▭ Administrative Forest
- Highway
- Highway w/Median
- Road - Light Duty - Dirt
- Road - Light Duty - Paved
- Road - Light Duty - Unspecified Composition
- Road - Unimproved
- Trail
- Indian Land
- PRO_Indian_Lands_Clip_U M
- Non-FS Lands
- Wilderness

Tile Location

1	2	3
4	5	6
7	8	9
10	11	12
13	14	15

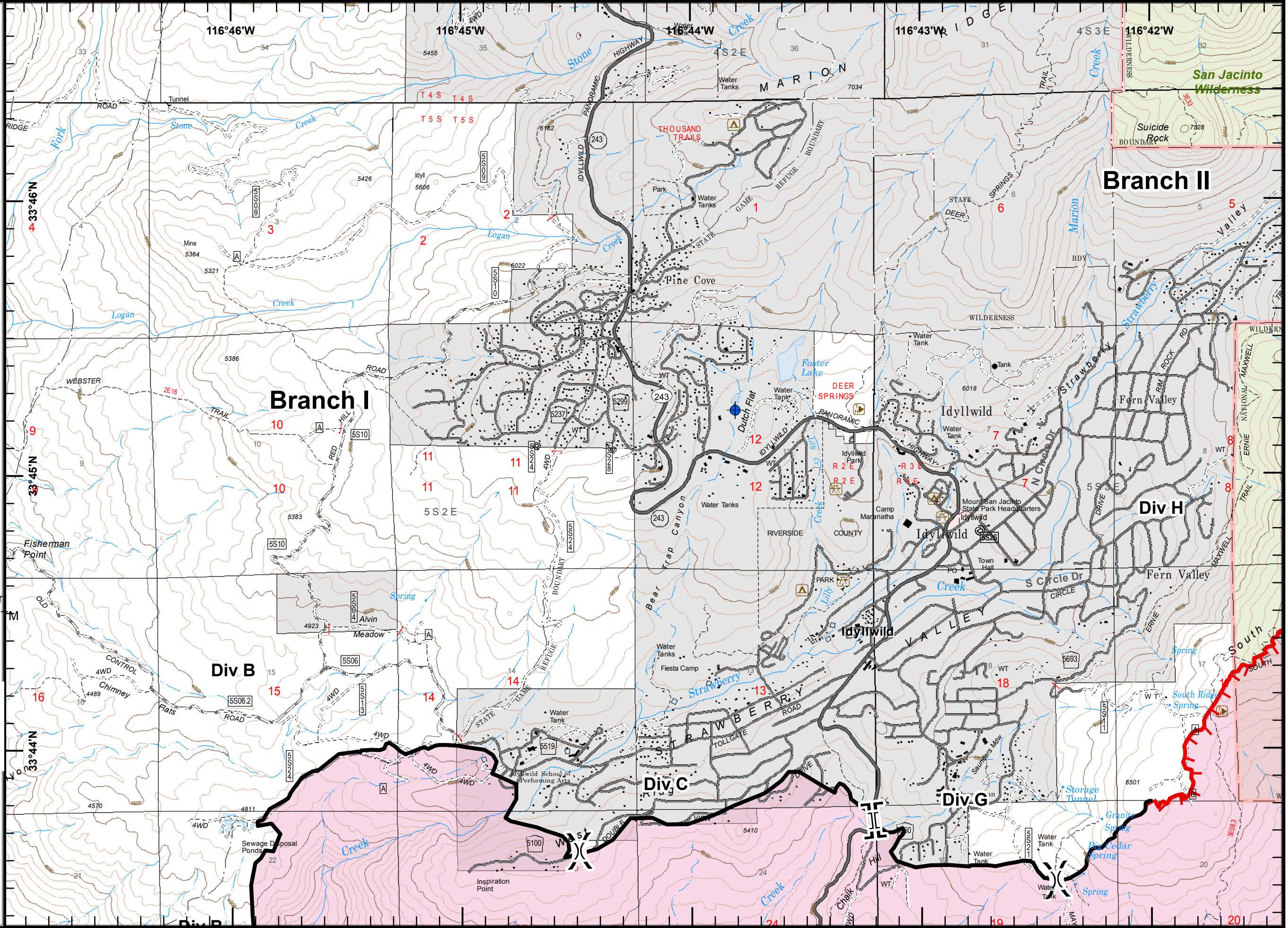
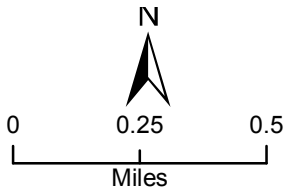


Cranston Fire
CA-BDF-0011390
7/29/2018
Day
NAD83
Map Page 5

- Drop Point
- ⊗ Fire Origin
- ▣ Incident Command Post
- ⌋ Division Break
- ⌋ Branch Break
- 🔴 Uncontrolled Fire Edge
- 🟢 Completed Line
- 🟡 Administrative Forest
- 🛣 Highway
- 🛤 Road - Light Duty - Dirt
- 🛤 Road - Light Duty - Paved
- 🛤 Road - Unimproved
- 🛤 Trail
- ⌋ State/County Special Area
- 🟡 Wildfire Daily Fire Perimeter
- 🟡 PRO_Indian_Lands_Clip_UTM
- 🟡 Non-FS Lands
- 🟢 Wilderness

Tile Location

1	2	3
4	5	6
8	9	10
12	13	14

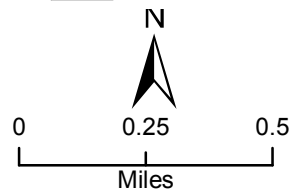


Cranston Fire
CA-BDF-0011390
7/29/2018
Day
NAD83
Map Page 6

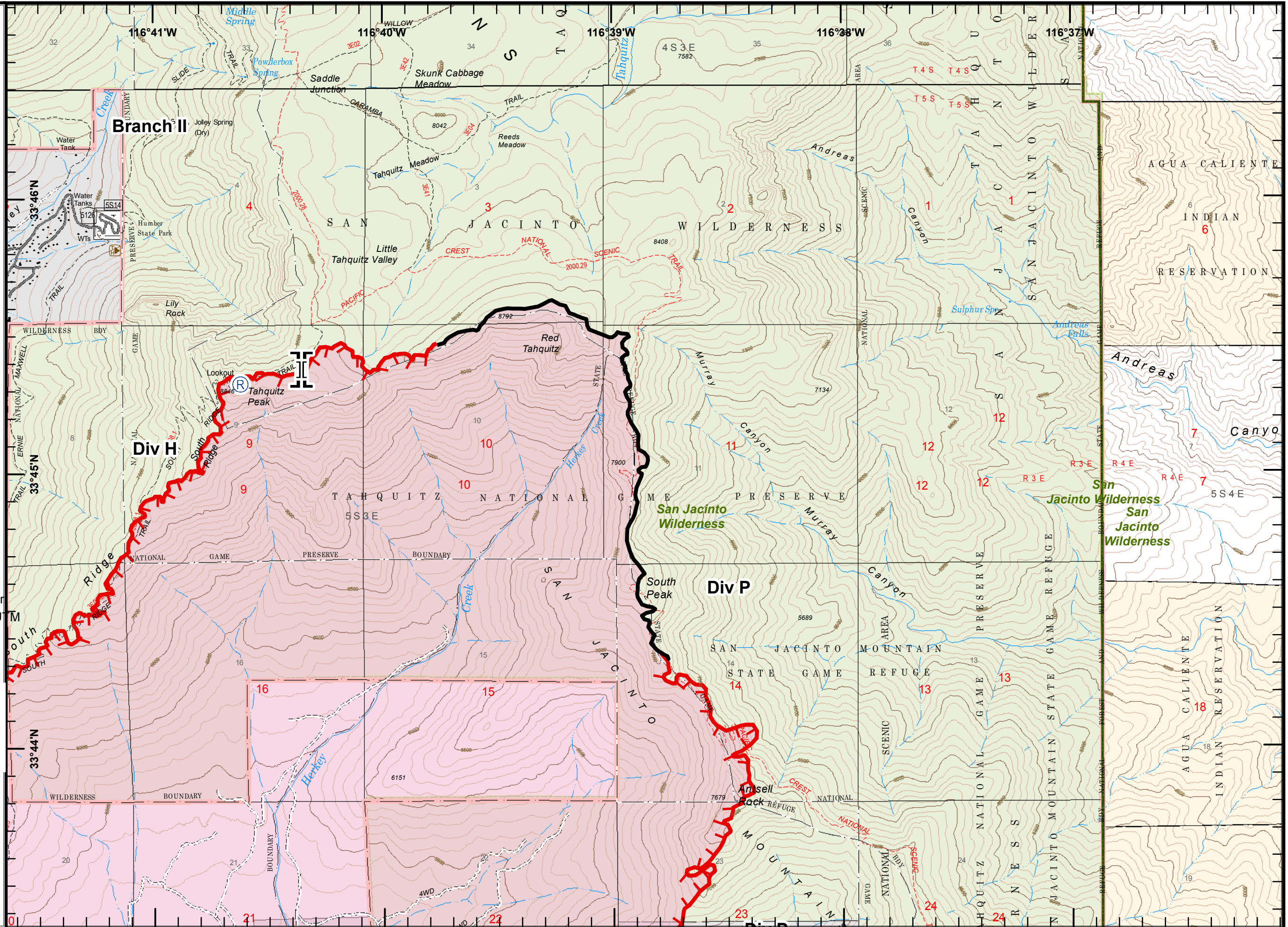
- Drop Point
- ⊗ Fire Origin
- ▣ Incident Command Post
- ⌋ Division Break
- ⌋ Branch Break
- 🔴 Uncontrolled Fire Edge
- ⚫ Completed Line
- 🟩 Administrative Forest
- 🛣 Road - Light Duty - Paved
- 🛤 Road - Unimproved
- 👤 Trail
- 👤 Trail - Nat Rec/Scenic/Historic
- 🏠 Indian Land
- 🏠 State/County Special Area
- 🟡 Wildfire Daily Fire Perimeter
- 🟡 PRO_Indian_Lands_Clip_U
- 🟡 Non-FS Lands
- 🟢 Wilderness

Tile Location

1	2	3
4	5	6
8	9	10
12	13	14



MRH
7/29/2018
2055 Hours

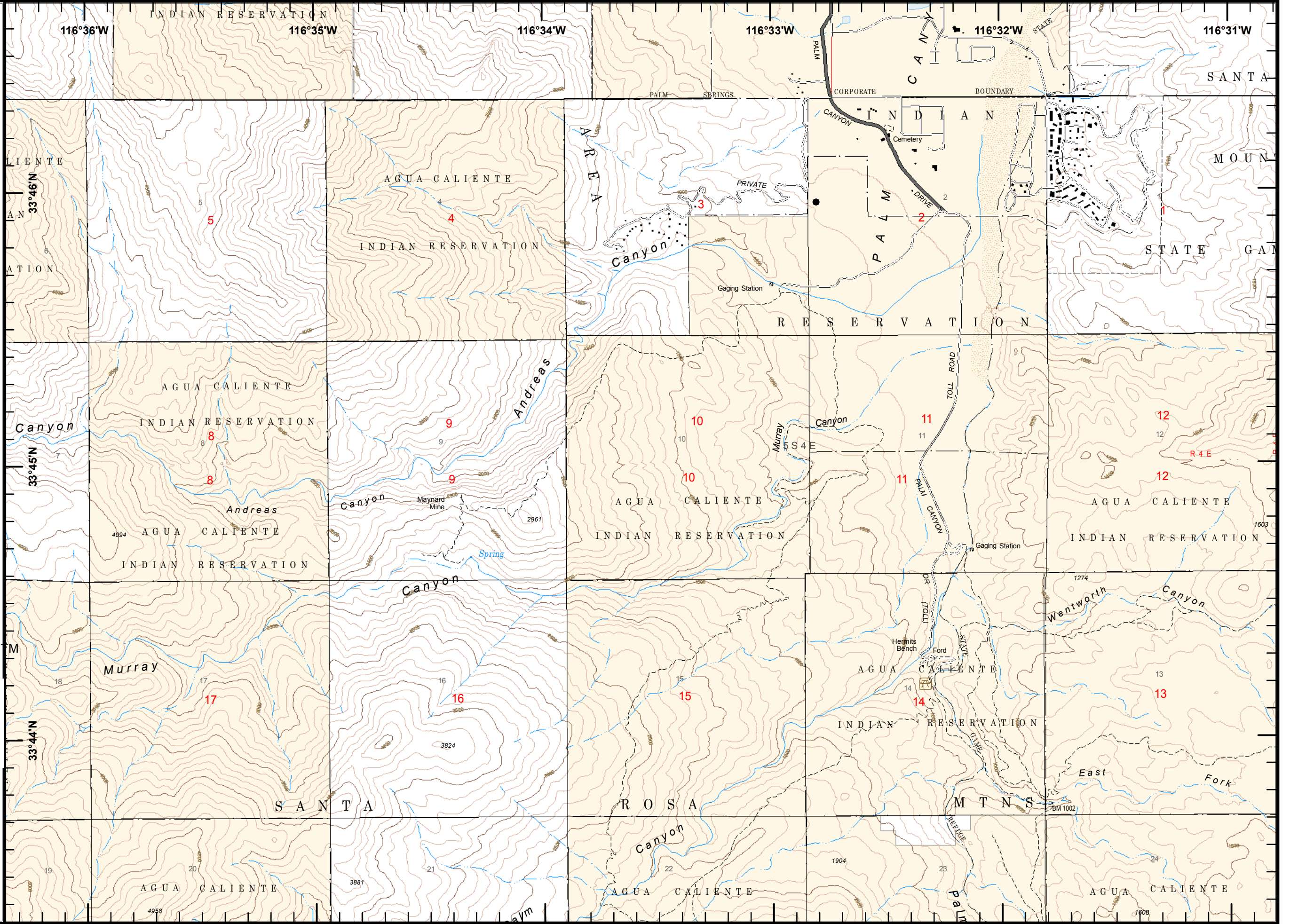
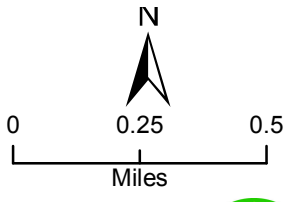


Cranston Fire
CA-BDF-0011390
7/29/2018
Day
NAD83
Map Page 7

- Drop Point
- ⊗ Fire Origin
- Incident Command Post
-) Division Break
- ⌋ Branch Break
- Highway
- Road - Light Duty - Unspecified Composition
- Road - Unimproved
- Trail
- Incorporated City - Etc
- Indian Land
- State/County Special Area
- PRO_Indian_Lands_Clip_UTM

Tile Location

1	2	3	4
5	6	7	8
9	10	11	12
13	14	15	16

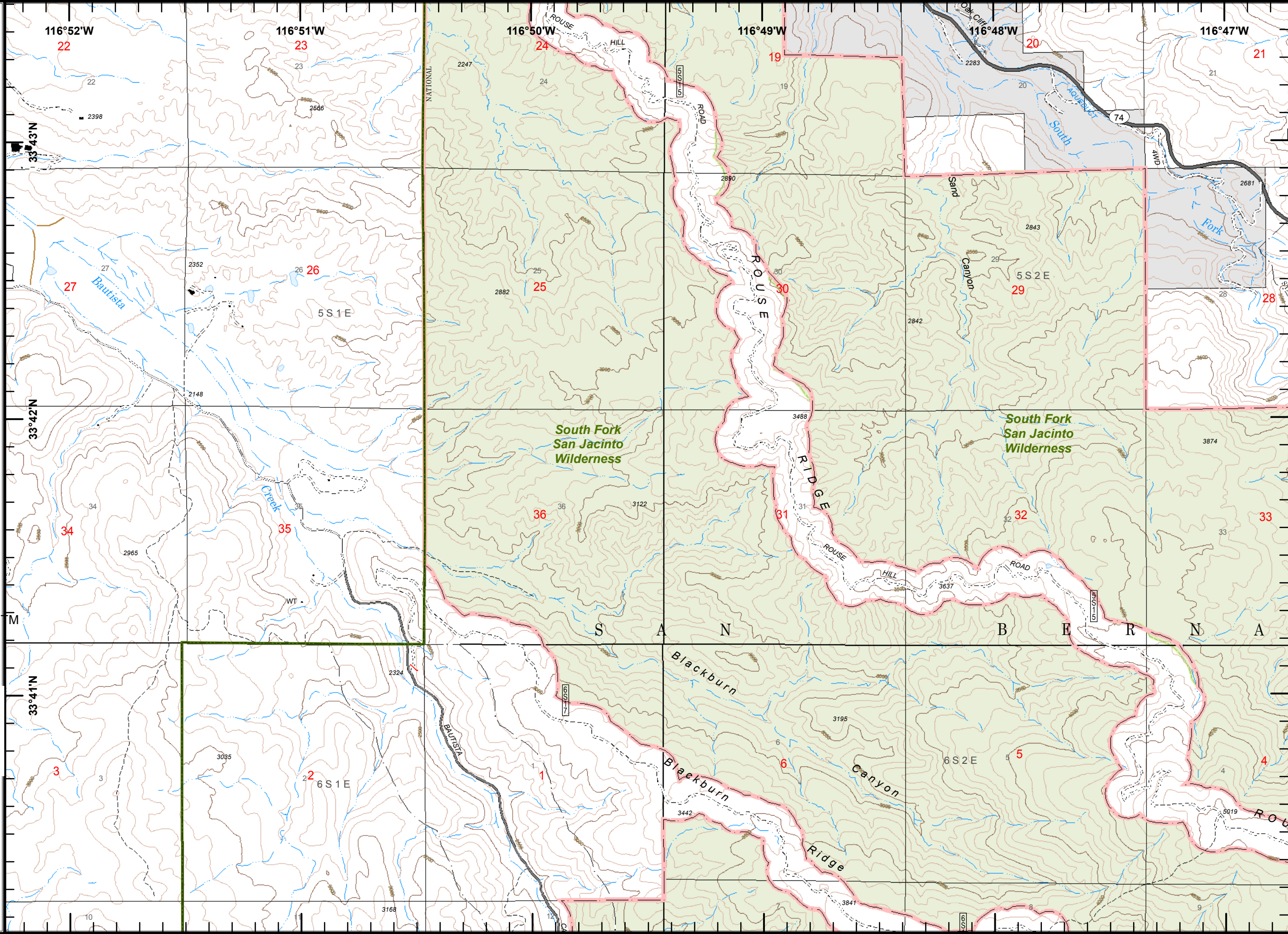
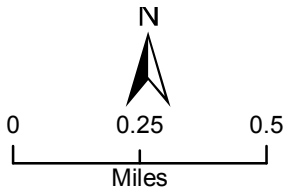


Cranston Fire
CA-BDF-0011390
7/29/2018
Day
NAD83
Map Page 8

- Drop Point
- ⊗ Fire Origin
- ▣ Incident Command Post
- ⌋ Division Break
- ⌌ Branch Break
- ▭ Administrative Forest
- Highway
- Road - Light Duty - Dirt
- Road - Light Duty - Paved
- Road - Light Duty - Unspecified Composition
- Road - Unimproved
- Trail
- State/County Special Area
- ▭ PRO_Indian_Lands_Clip_U_M
- ▭ Non-FS Lands
- ▭ Wilderness

Tile Location

1	2	3
4	5	6
8	9	10
12	13	14

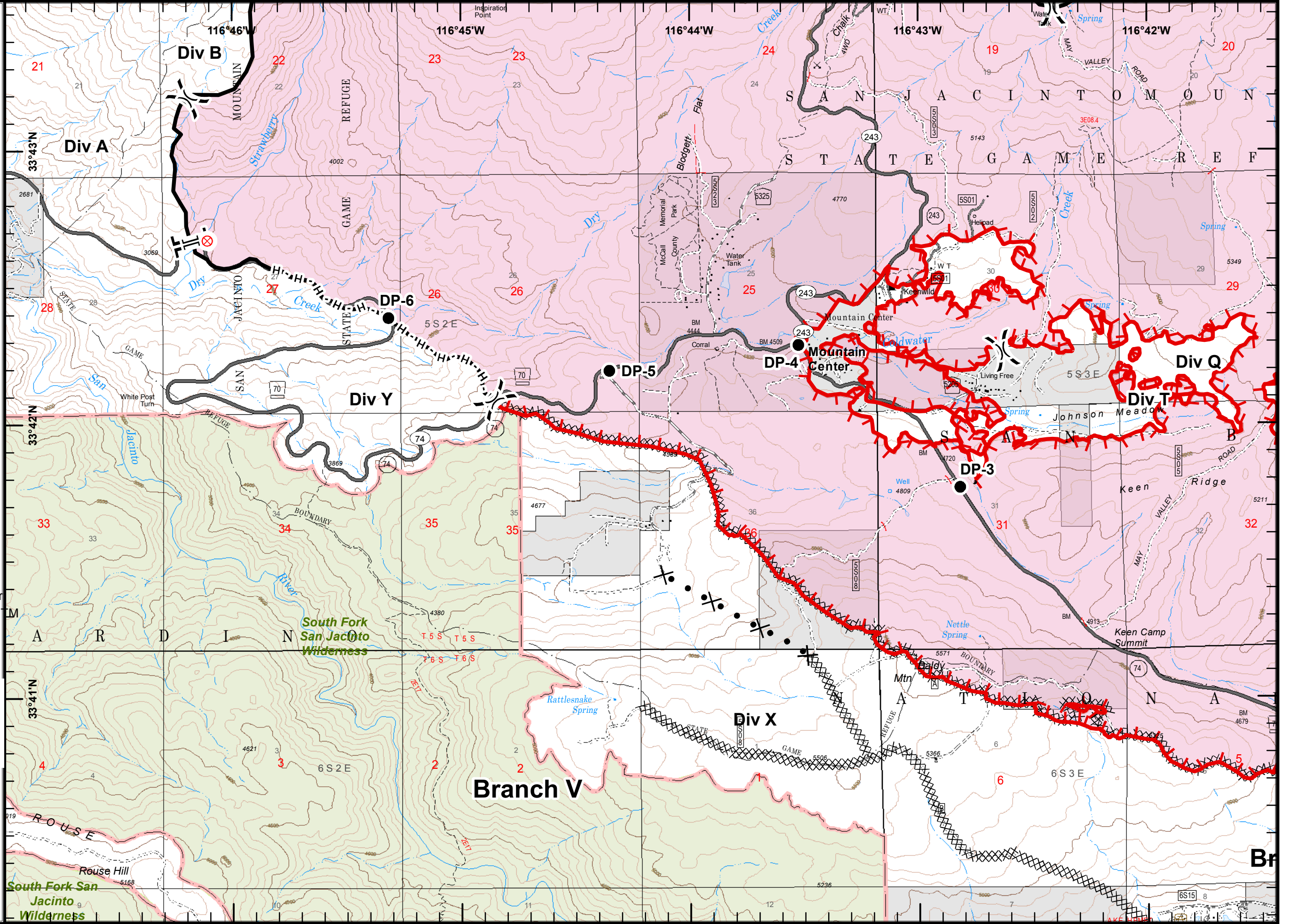
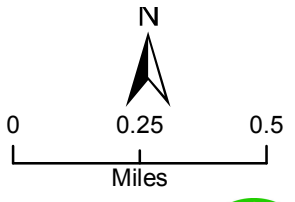


Cranston Fire
CA-BDF-0011390
7/29/2018
Day
NAD83
Map Page 9

- Drop Point
- ⊗ Fire Origin
- ▣ Incident Command Post
- ⌋ Division Break
- ⌌ Branch Break
- 🔴 Uncontrolled Fire Edge
- ⌌ Completed Line
- ⌌ Completed Dozer Line
- ⌌ Completed Hand Line
- ⌌ Proposed Dozer Line
- 🟩 Administrative Forest
- 🛣 Highway
- 🛤 Road - Light Duty - Dirt
- 🛤 Road - Light Duty - Paved
- 🛤 Road - Unimproved
- 🛤 Trail
- ⌌ State/County Special Area
- 🟡 Wildfire Daily Fire Perimeter
- 🟡 PRO_Indian_Lands_Clip_U_M
- 🟡 Non-FS Lands
- 🟢 Wilderness

Tile Location

1	2	3
4	5	6
8	9	10
12	13	14

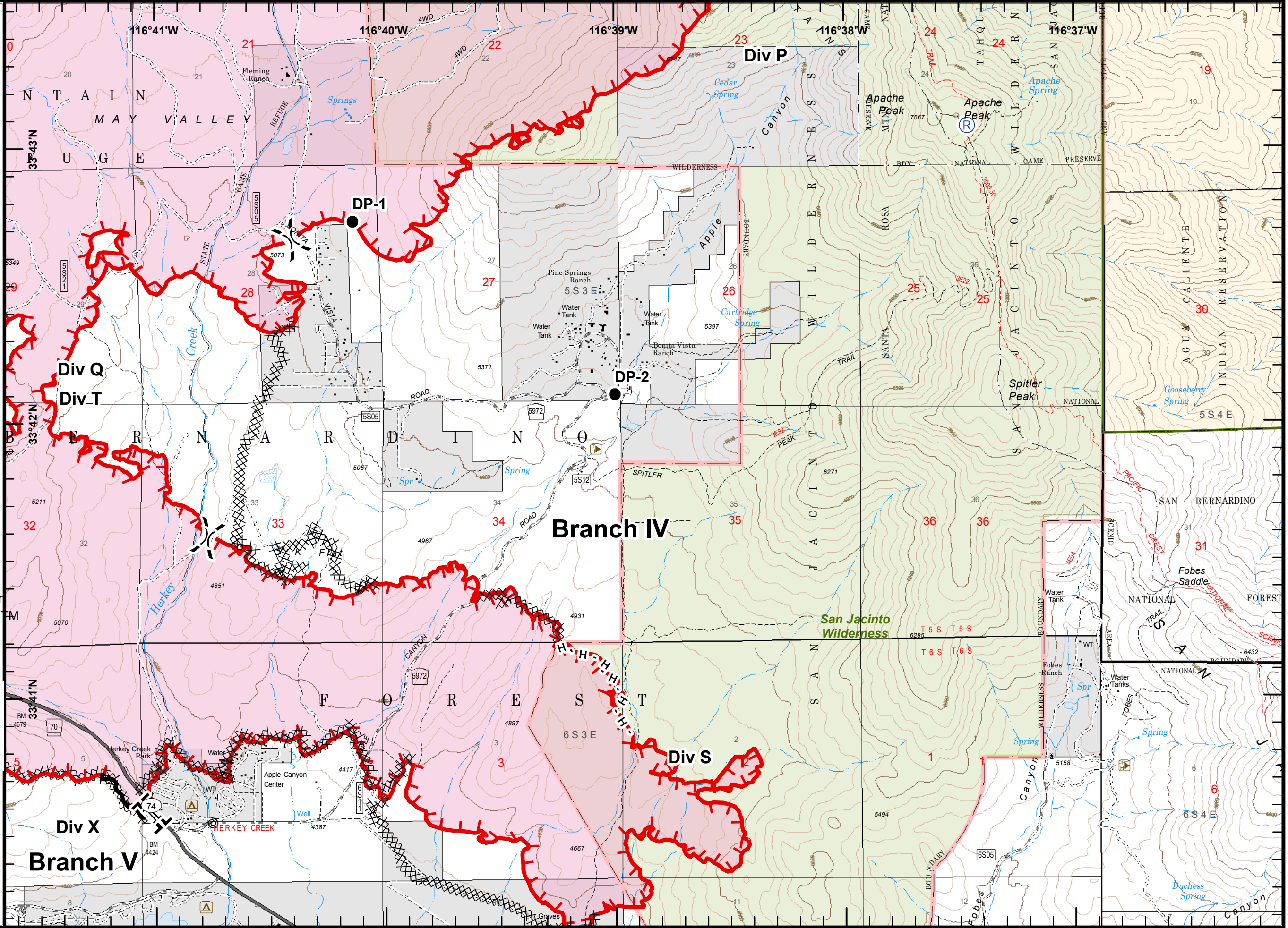
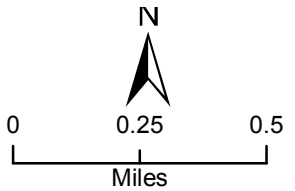


Cranston Fire
CA-BDF-0011390
7/29/2018
Day
NAD83
Map Page 10

- Drop Point
- ⊗ Fire Origin
- ▣ Incident Command Post
-) Division Break
- || Branch Break
- 🔴 Uncontrolled Fire Edge
- ⌒ Completed Line
- ⊞ Completed Dozer Line
- ⚡ Completed Hand Line
- 🟩 Administrative Forest
- 🛣 Highway
- 🛤 Road - Light Duty - Dirt
- 🛤 Road - Unimproved
- 🛤 Trail
- 🛤 Trail - Nat Rec/Scenic/Historic
- 🌲 FS Land - Other
- 🌲 Indian Land
- 🌲 State/County Special Area
- 🟡 Wildfire Daily Fire Perimeter
- 🟡 PRO_Indian_Lands_Clip_UTM
- 🟡 Non-FS Lands
- 🟢 Wilderness

Tile Location

1	2	3
4	5	6
8	9	10
12	13	14

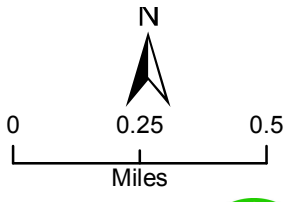


Cranston Fire
CA-BDF-0011390
7/29/2018
Day
NAD83
Map Page 11

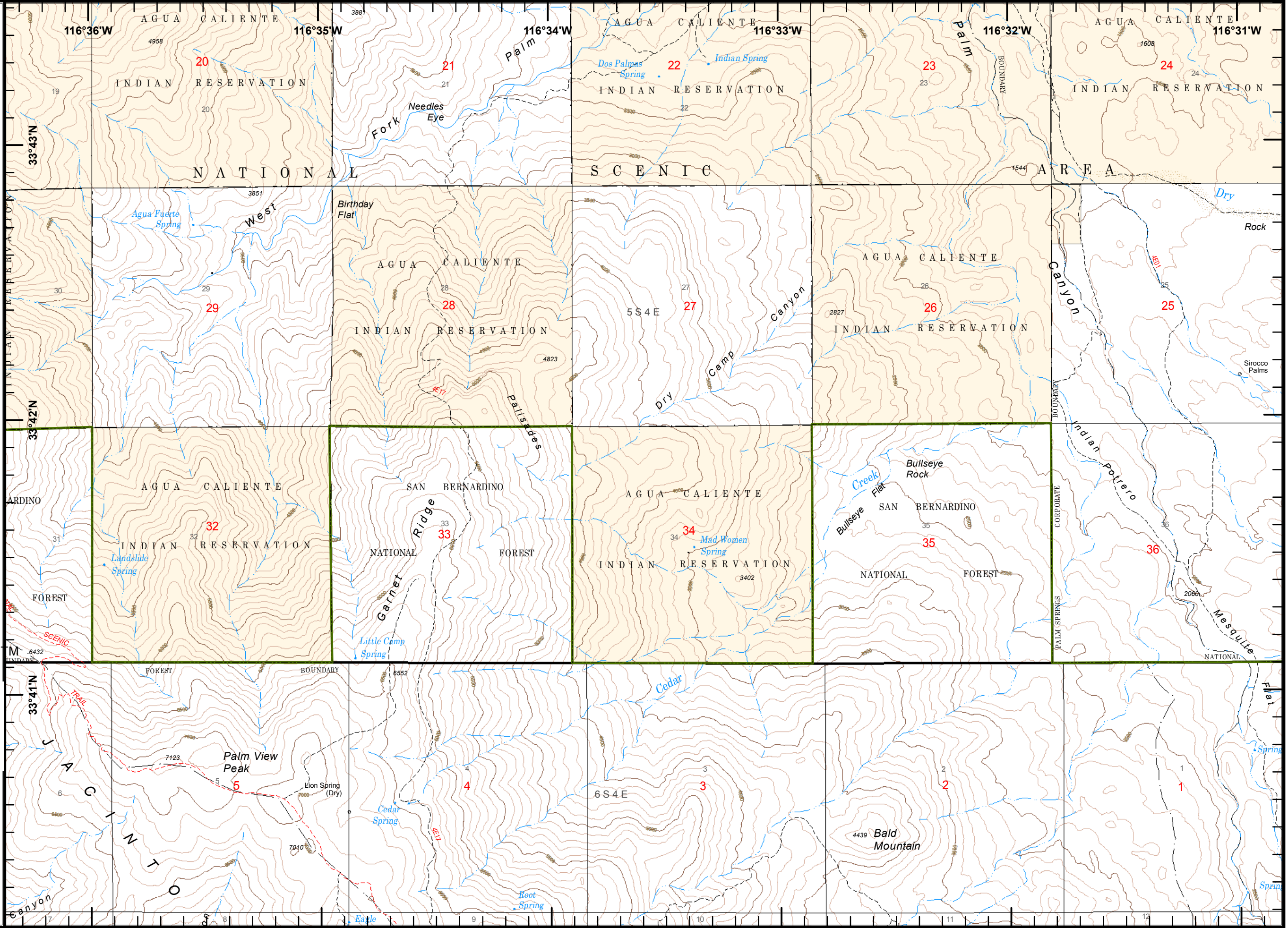
- Drop Point
- ⊗ Fire Origin
- ▣ Incident Command Post
- ⌋ Division Break
- ⌈ Branch Break
- ▭ Administrative Forest
- ⋯ Trail
- ⋯ Trail - Nat Rec/Scenic/Historic
- ⋯ FS Land - Other
- ⋯ Incorporated City - Etc
- ⋯ Indian Land
- ⋯ State/County Special Area
- ▭ PRO_Indian_Lands_Clip_U

Tile Location

1	2	3
4	5	6
8	9	10
12	13	14



MRH
 7/29/2018
 2056 Hours

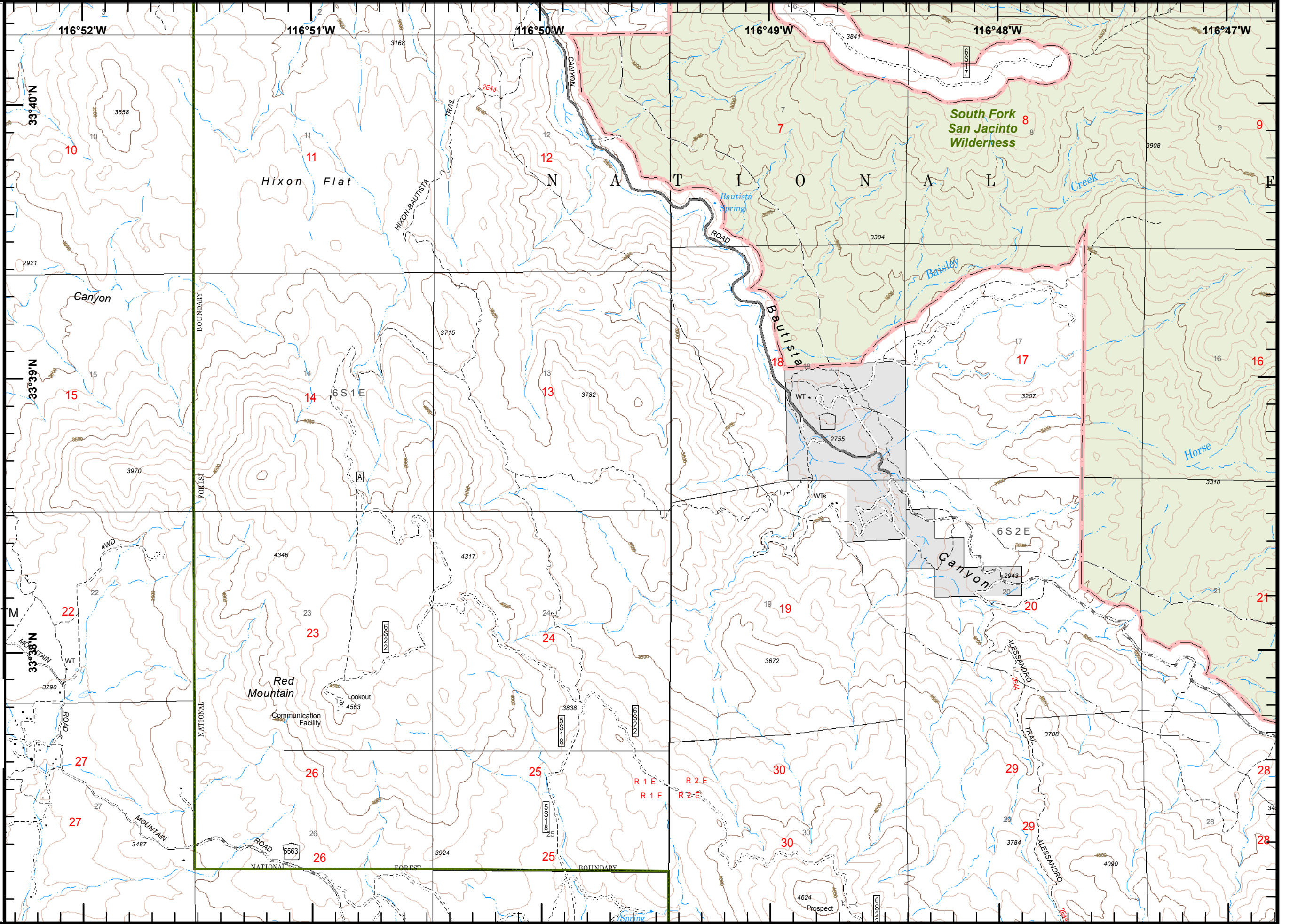
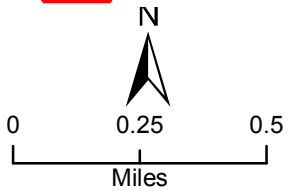


Cranston Fire
CA-BDF-0011390
7/29/2018
Day
NAD83
Map Page 12

- Drop Point
- ⊗ Fire Origin
- ▣ Incident Command Post
-) Division Break
- || Branch Break
- ▭ Administrative Forest
- ~ Road - Light Duty - Dirt
- ~ Road - Light Duty - Paved
- ~ Road - Light Duty - Unspecified Composition
- ~ Road - Unimproved
- ~ Trail
- ▭ PRO_Indian_Lands_Clip_U M
- ▭ Non-FS Lands
- ▭ Wilderness

Tile Location

1	2	3
4	5	6
8	9	10
12	13	14

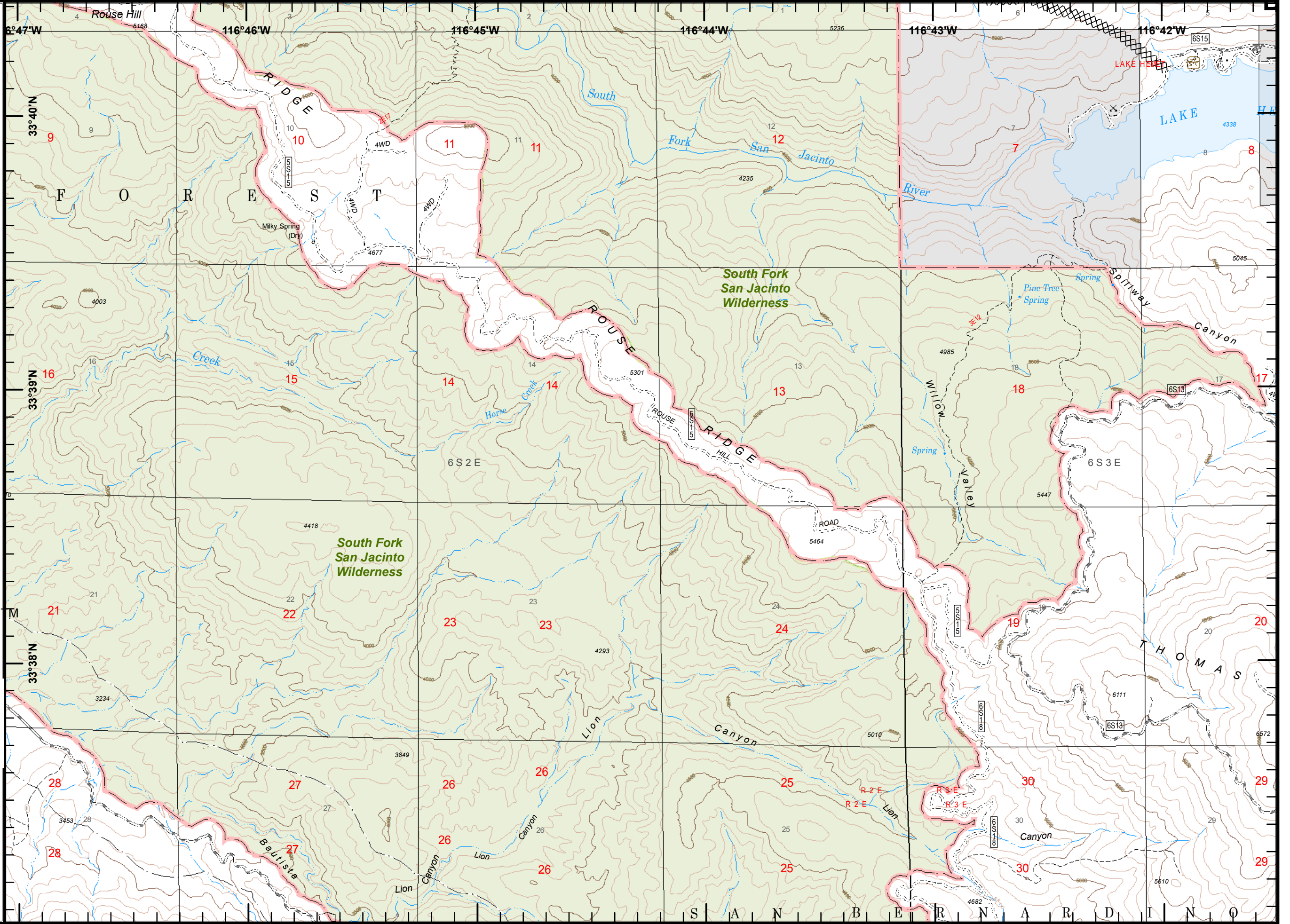
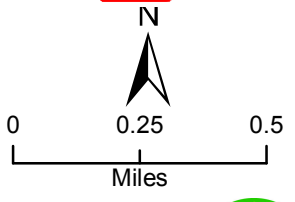


Cranston Fire
CA-BDF-0011390
7/29/2018
Day
NAD83
Map Page 13

- Drop Point
- ⊗ Fire Origin
- ▣ Incident Command Post
- ⌘ Division Break
- ⌋ Branch Break
- ⚡ Completed Dozer Line
- ▭ Administrative Forest
- ⌋ Road - Light Duty - Dirt
- ⌋ Road - Unimproved
- ⌋ Trail
- ▭ PRO_Indian_Lands_Clip_UTM
- ▭ Non-FS Lands
- ▭ Wilderness

Tile Location

1	2	3
4	5	6
8	9	10
12	13	14

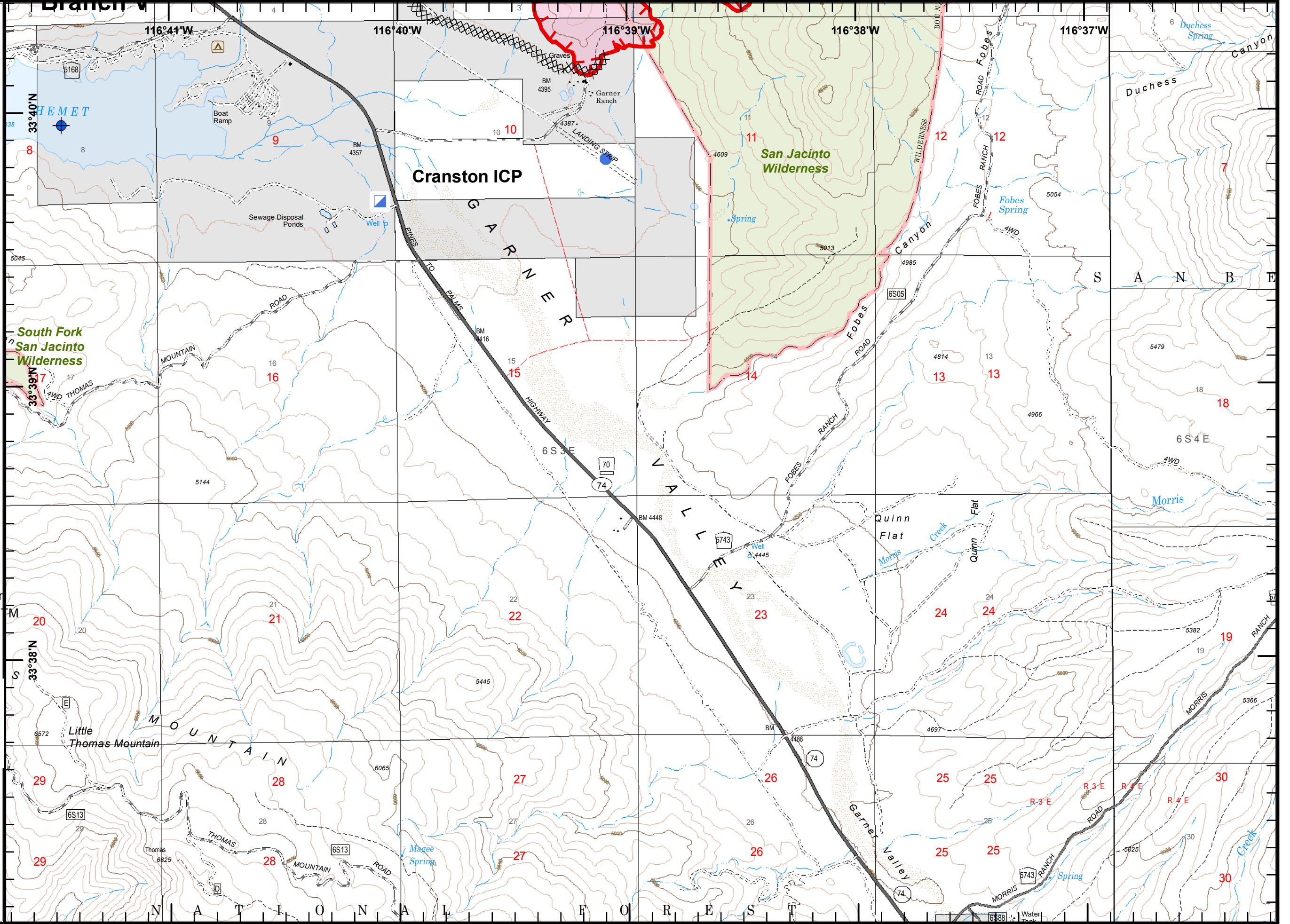
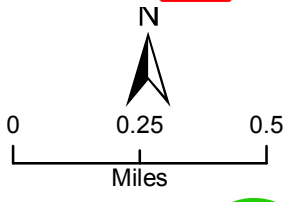


Cranston Fire
CA-BDF-0011390
7/29/2018
Day
NAD83
Map Page 14

- Drop Point
- ⊗ Fire Origin
- ▣ Incident Command Post
- ⌋ Division Break
- ⌋ Branch Break
- 🔥 Uncontrolled Fire Edge
- ⚡ Completed Dozer Line
- 🌲 Administrative Forest
- 🛣 Highway
- 🛤 Road - Light Duty - Dirt
- 🛤 Road - Light Duty - Paved
- 🛤 Road - Unimproved
- 👤 Trail
- ⌋ State/County Special Area
- 🔴 Wildfire Daily Fire Perimeter
- 🟡 PRO_Indian_Lands_Clip_U
- 🔲 Non-FS Lands
- 🟢 Wilderness

Tile Location

1	2	3
4	5	6
8	9	10
12	13	14



Cranston Fire
CA-BDF-0011390
7/29/2018
Day
NAD83
Map Page 15

- Drop Point
- ⊗ Fire Origin
- ▣ Incident Command Post
- ⌋ Division Break
- ⌌ Branch Break
- ▭ Administrative Forest
- Road - Light Duty - Paved
- ~ Road - Unimproved
- - - Trail
- - - Trail - Nat Rec/Scenic/Historic
- - - State/County Special Area
- PRO_Indian_Lands_Clip_U
- Non-FS Lands

Tile Location

1	2	3	
4	5	6	
8	9	10	
12	13	14	15

