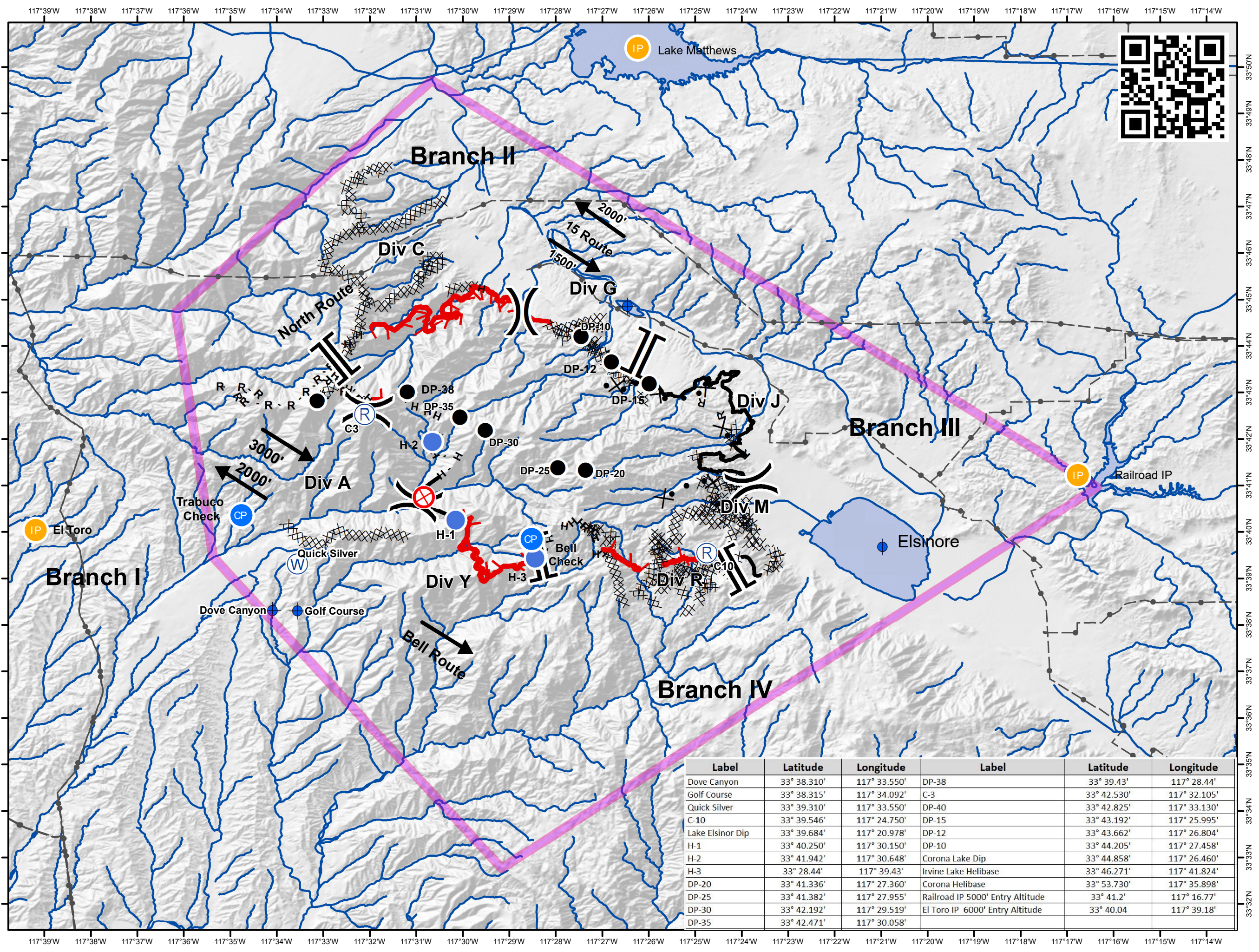
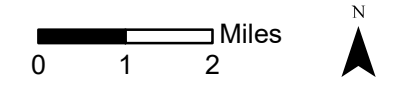


Holy Fire CA-CNF-002664 Air Ops

August 13th, 2018 DAY



- Transmission Lines
- Check
- IP
- TFR
- Dip Site
- Drop Point
- Fire Origin
- Helispot
- Repeater
- Water Source
- Division Break
- Branch Break
- Uncontrolled Fire Edge
- Completed Line
- Completed Dozer Line
- Completed Hand Line
- Road as Completed Line
- Proposed Dozer Line



Label	Latitude	Longitude	Label	Latitude	Longitude
Dove Canyon	33° 38.310'	117° 33.550'	DP-38	33° 39.43'	117° 28.44'
Golf Course	33° 38.315'	117° 34.092'	C-3	33° 42.530'	117° 32.105'
Quick Silver	33° 39.310'	117° 33.550'	DP-40	33° 42.825'	117° 33.130'
C-10	33° 39.546'	117° 24.750'	DP-15	33° 43.192'	117° 25.995'
Lake Elsinor Dip	33° 39.684'	117° 20.978'	DP-12	33° 43.662'	117° 26.804'
H-1	33° 40.250'	117° 30.150'	DP-10	33° 44.205'	117° 27.458'
H-2	33° 41.942'	117° 30.648'	Corona Lake Dip	33° 44.858'	117° 26.460'
H-3	33° 28.44'	117° 39.43'	Irvine Lake Helibase	33° 46.271'	117° 41.824'
DP-20	33° 41.336'	117° 27.360'	Corona Helibase	33° 53.730'	117° 35.898'
DP-25	33° 41.382'	117° 27.955'	Railroad IP 5000' Entry Altitude	33° 41.2'	117° 16.77'
DP-30	33° 42.192'	117° 29.519'	El Toro IP 6000' Entry Altitude	33° 40.04	117° 39.18'
DP-35	33° 42.471'	117° 30.058'			