

118°52'0"W

118°51'0"W

118°50'0"W

118°49'0"W

118°48'0"W

WOOLSEY FIRE

Incident Action Plan Map

CA-LAC-338981

Nov 9, 2018

Page 1 of 6



34°14'0"N

34°14'0"N

34°13'0"N

34°13'0"N

34°12'0"N

34°12'0"N

118°52'0"W

118°51'0"W

118°50'0"W

118°49'0"W

118°48'0"W

BRANCH IX

BRANCH VII

THOUSAND OAKS

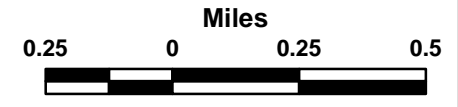
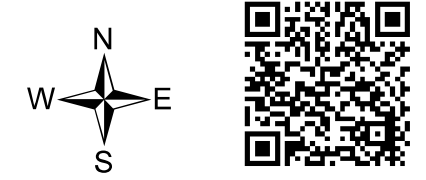
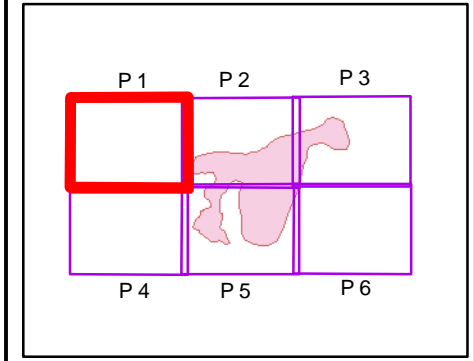
North Ranch

Wood Ranch Reservoir

Sycamore Canyon

Arroyo Conejo

- Branch
- Division
- Drop Point
- Staging Area
- Helispot
- Incident Command Post
- Uncontrolled Fire Edge
- Completed Dozer Line
- Completed Line
- Hand Line
- Road as Completed Line



118°47'0"W

118°46'0"W

118°45'0"W

118°44'0"W

118°43'0"W

34°14'0"N

34°13'0"N

34°12'0"N

34°14'0"N

34°13'0"N

34°12'0"N

118°47'0"W

118°46'0"W

118°45'0"W

118°44'0"W

118°43'0"W

WOOLSEY FIRE

Incident Action Plan Map

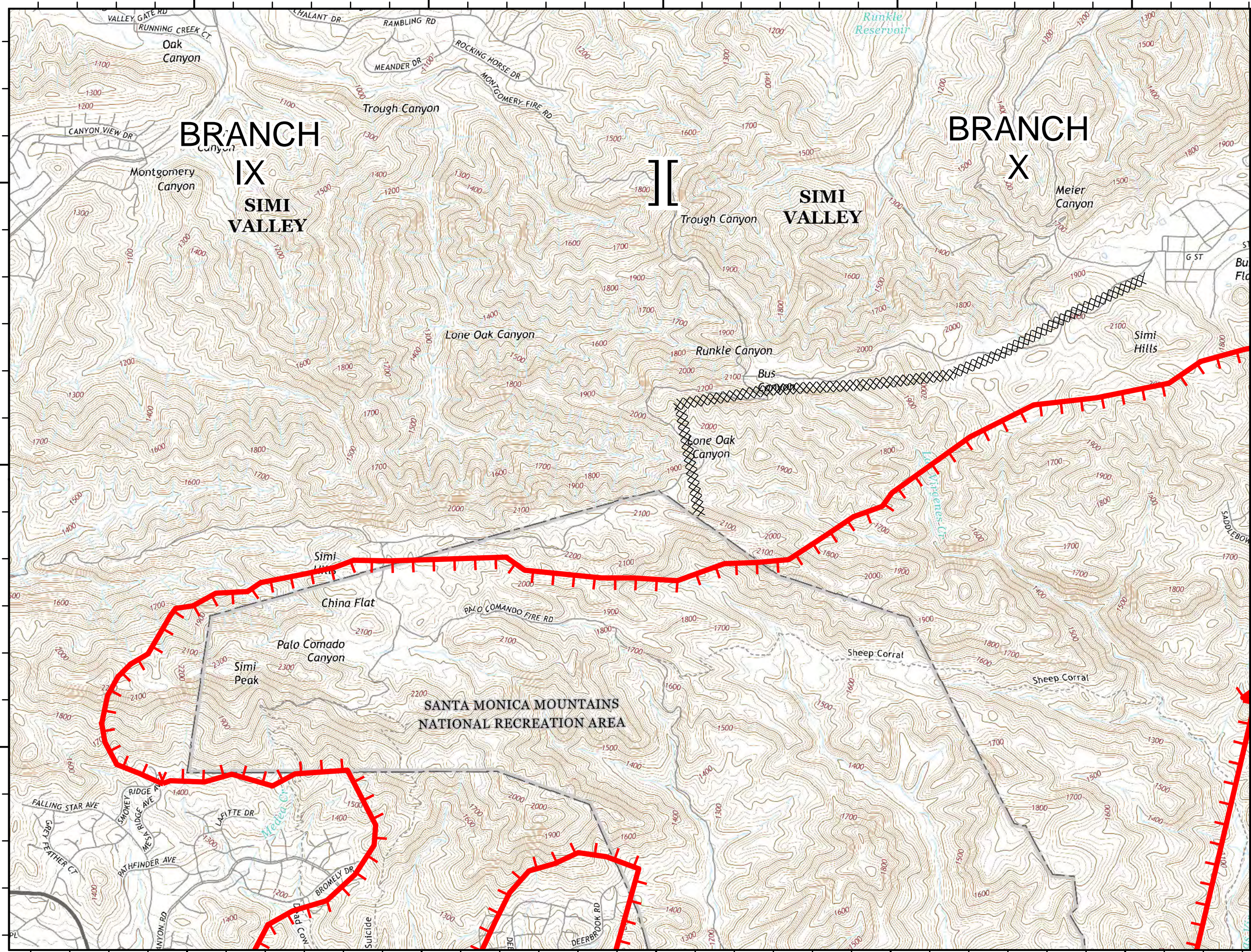
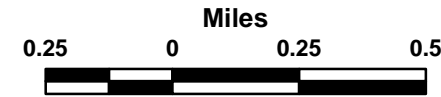
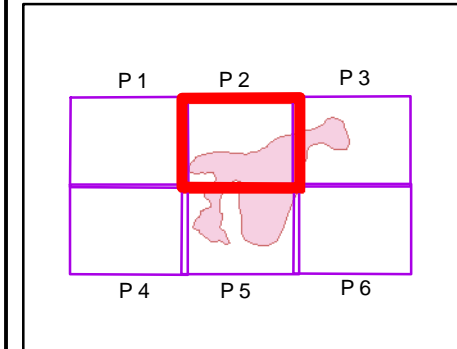
CA-LAC-338981

Nov 9, 2018

Page 2 of 6



- [[Branch
-) (Division
- Drop Point
- Ⓢ Staging Area
- Helispot
- ▣ Incident Command Post
- ┃ Uncontrolled Fire Edge
- XXXXX Completed Dozer Line
- Completed Line
- H - Hand Line
- R - Road as Completed Line



118°43'0"W 118°42'0"W 118°41'0"W 118°40'0"W 118°39'0"W 118°38'0"W

34°14'0"N 34°13'0"N 34°12'0"N

118°42'0"W 118°41'0"W 118°40'0"W 118°39'0"W 118°38'0"W

WOOLSEY FIRE

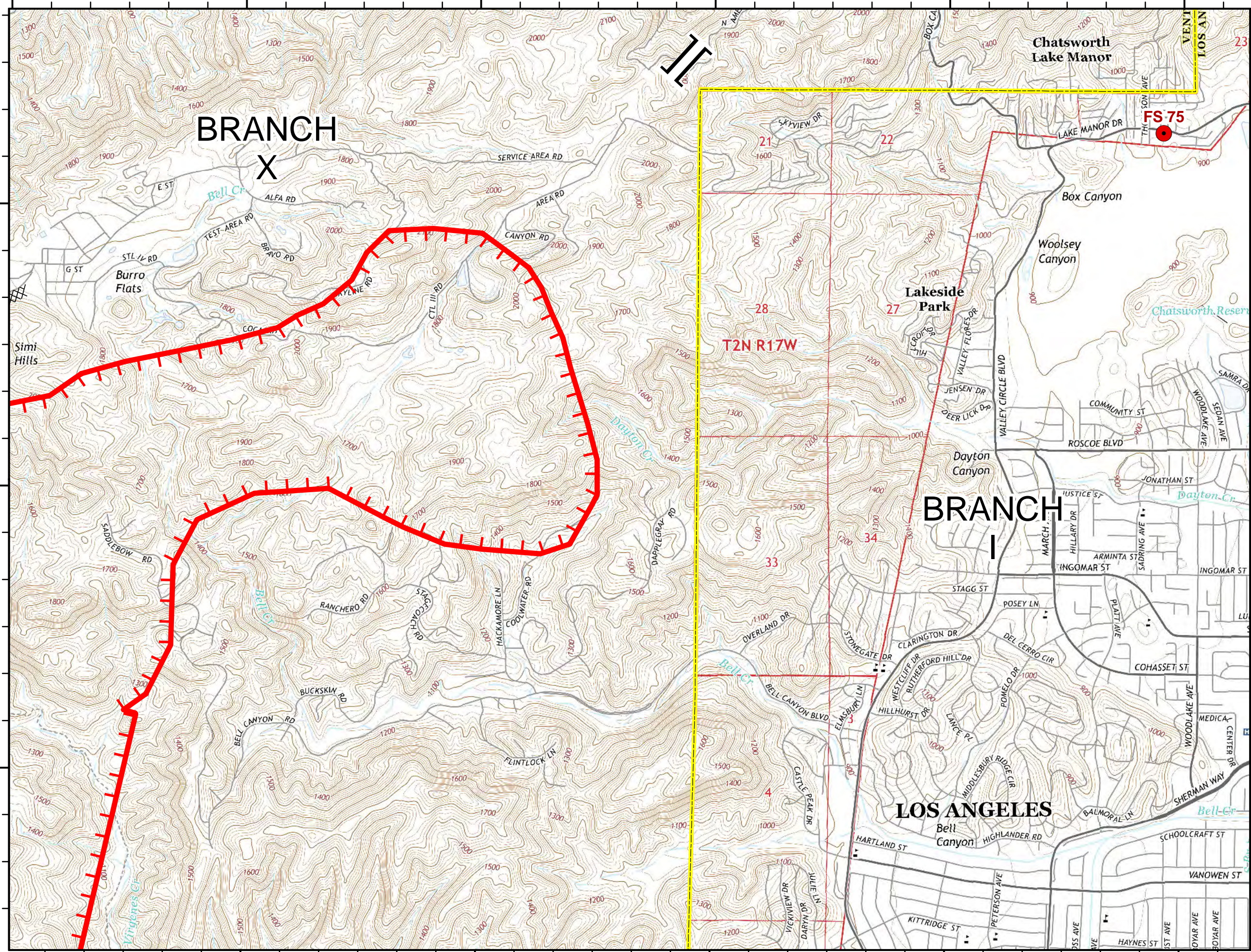
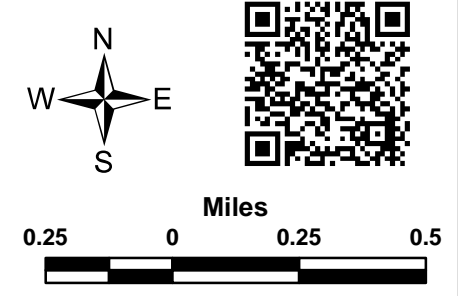
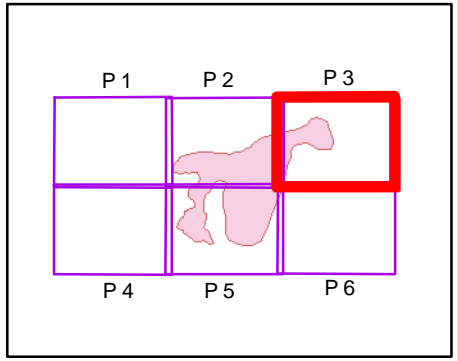
Incident Action Plan Map

CA-LAC-338981
Nov 9, 2018

Page 3 of 6



- Branch
- Division
- Drop Point
- Staging Area
- Helispot
- Incident Command Post
- Uncontrolled Fire Edge
- Completed Dozer Line
- Completed Line
- Hand Line
- Road as Completed Line



118°52'0"W

118°51'0"W

118°50'0"W

118°49'0"W

118°48'0"W

WOOLSEY FIRE

Incident Action Plan Map

CA-LAC-338981

Nov 9, 2018

Page 4 of 6



34°11'0"N

34°11'0"N

34°10'0"N

34°10'0"N

34°9'0"N

34°9'0"N

THOUSAND OAKS

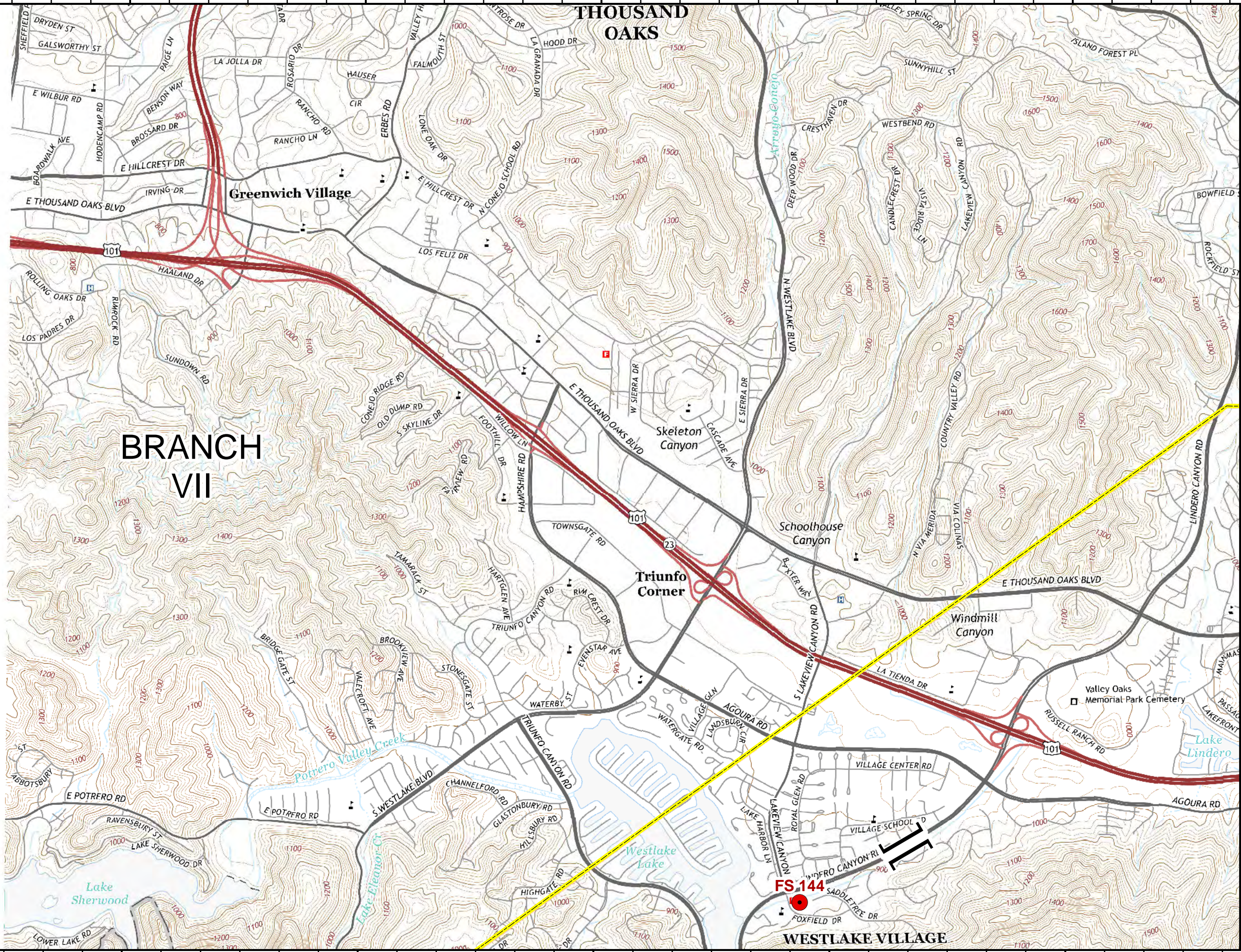
Greenwich Village

BRANCH VII

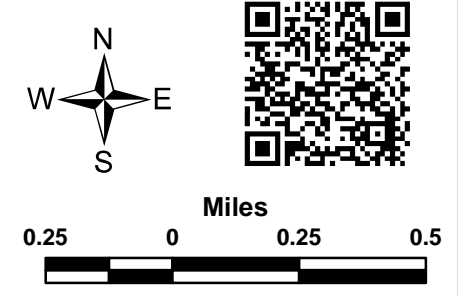
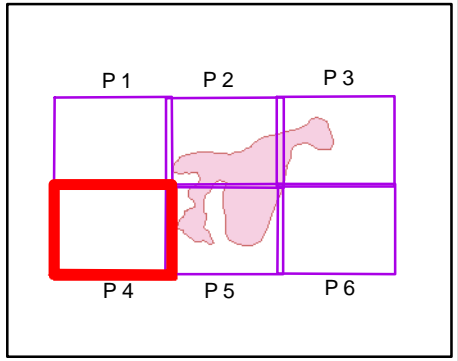
Triunfo Corner

FS 144

WESTLAKE VILLAGE



- Branch
- Division
- Drop Point
- Staging Area
- Helispot
- Incident Command Post
- Uncontrolled Fire Edge
- Completed Dozer Line
- Completed Line
- Hand Line
- Road as Completed Line



118°47'0"W

118°46'0"W

118°45'0"W

118°44'0"W

118°43'0"W

34°11'0"N

34°11'0"N

34°10'0"N

34°10'0"N

34°9'0"N

34°9'0"N

118°47'0"W

118°46'0"W

118°45'0"W

118°44'0"W

118°43'0"W

WOOLSEY FIRE

Incident Action Plan Map

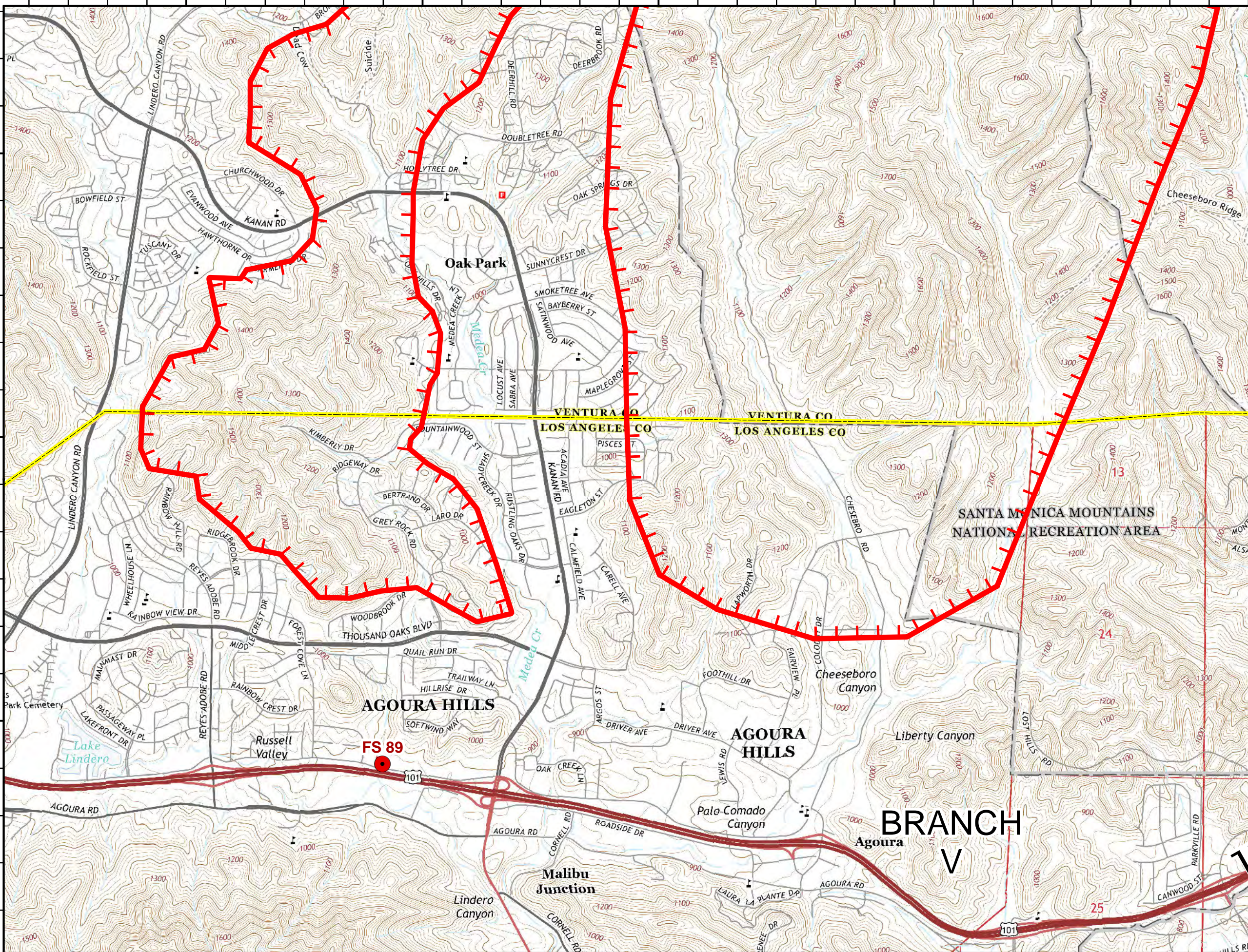
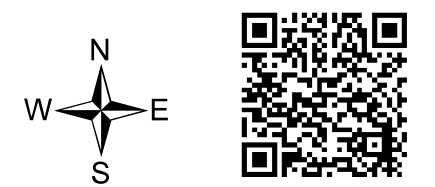
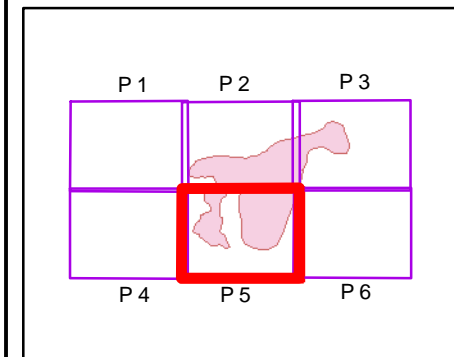
CA-LAC-338981

Nov 9, 2018

Page 5 of 6



- Branch
- Division
- Drop Point
- Staging Area
- Helispot
- Incident Command Post
- Uncontrolled Fire Edge
- Completed Dozer Line
- Completed Line
- Hand Line
- Road as Completed Line



118°42'0"W

118°41'0"W

118°40'0"W

118°39'0"W

118°38'0"W

34°11'0"N

34°11'0"N

34°10'0"N

34°10'0"N

34°9'0"N

34°9'0"N

118°42'0"W

118°41'0"W

118°40'0"W

118°39'0"W

118°38'0"W

WOOLSEY FIRE

Incident Action Plan Map

CA-LAC-338981

Nov 9, 2018

Page 6 of 6



- Branch
- Division
- Drop Point
- Staging Area
- Helispot
- Incident Command Post
- Uncontrolled Fire Edge
- Completed Dozer Line
- Completed Line
- Hand Line
- Road as Completed Line

