



IAP INDEX MAP

Woolsey Incident

CA-LAC-338981
November 11, 2018

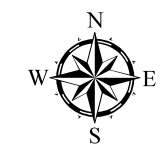
]] Branch Break

) (Division Break

— Uncontrolled Fire Edge

XXXXX Completed Dozer Line

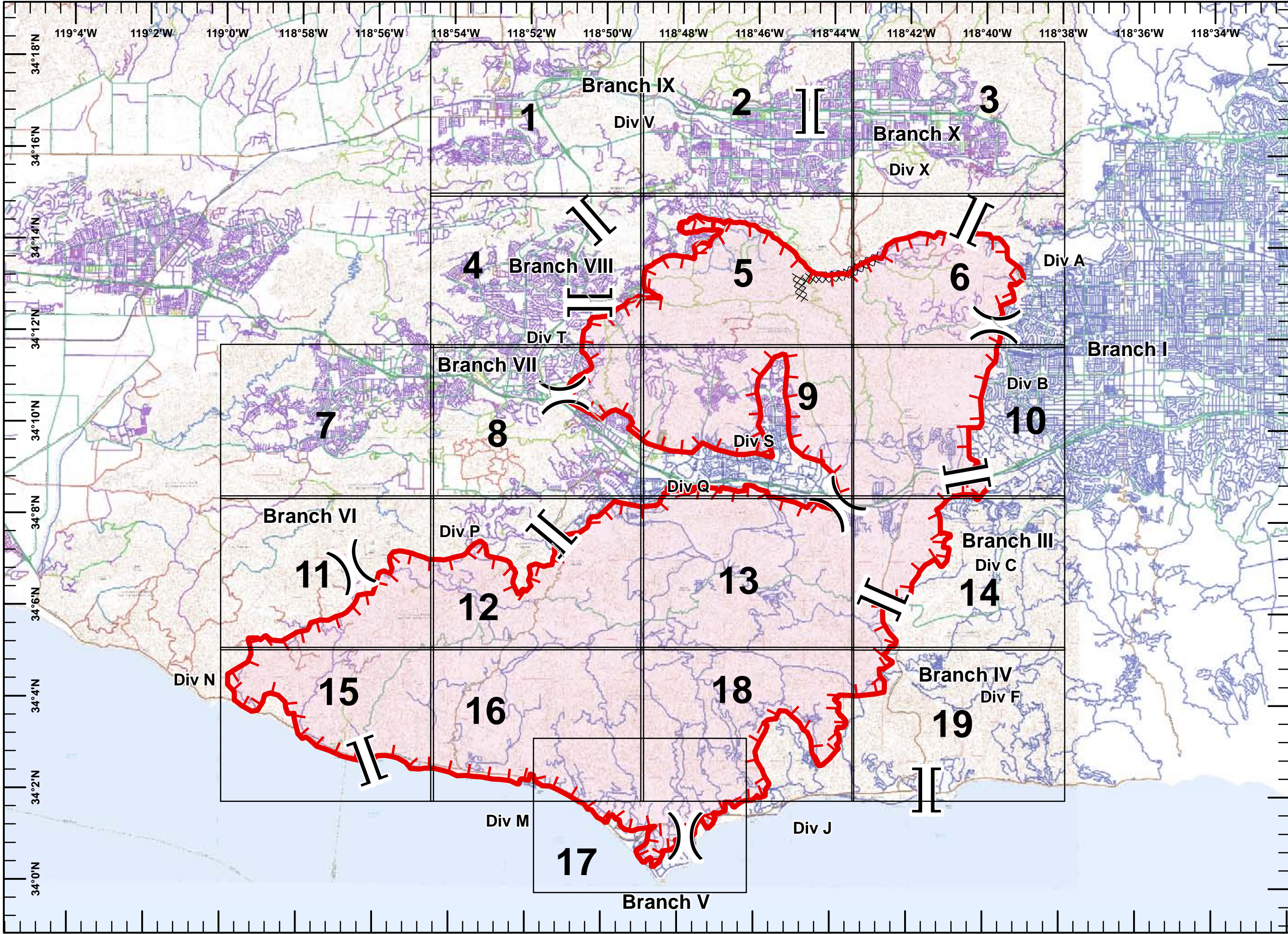
□ IAP Map pages



Miles
0 0.5 1 2

1:145,000

11/11/2018
01:53 hrs

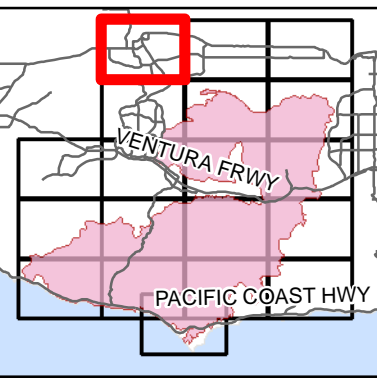




IAP MAP

Woolsey Incident

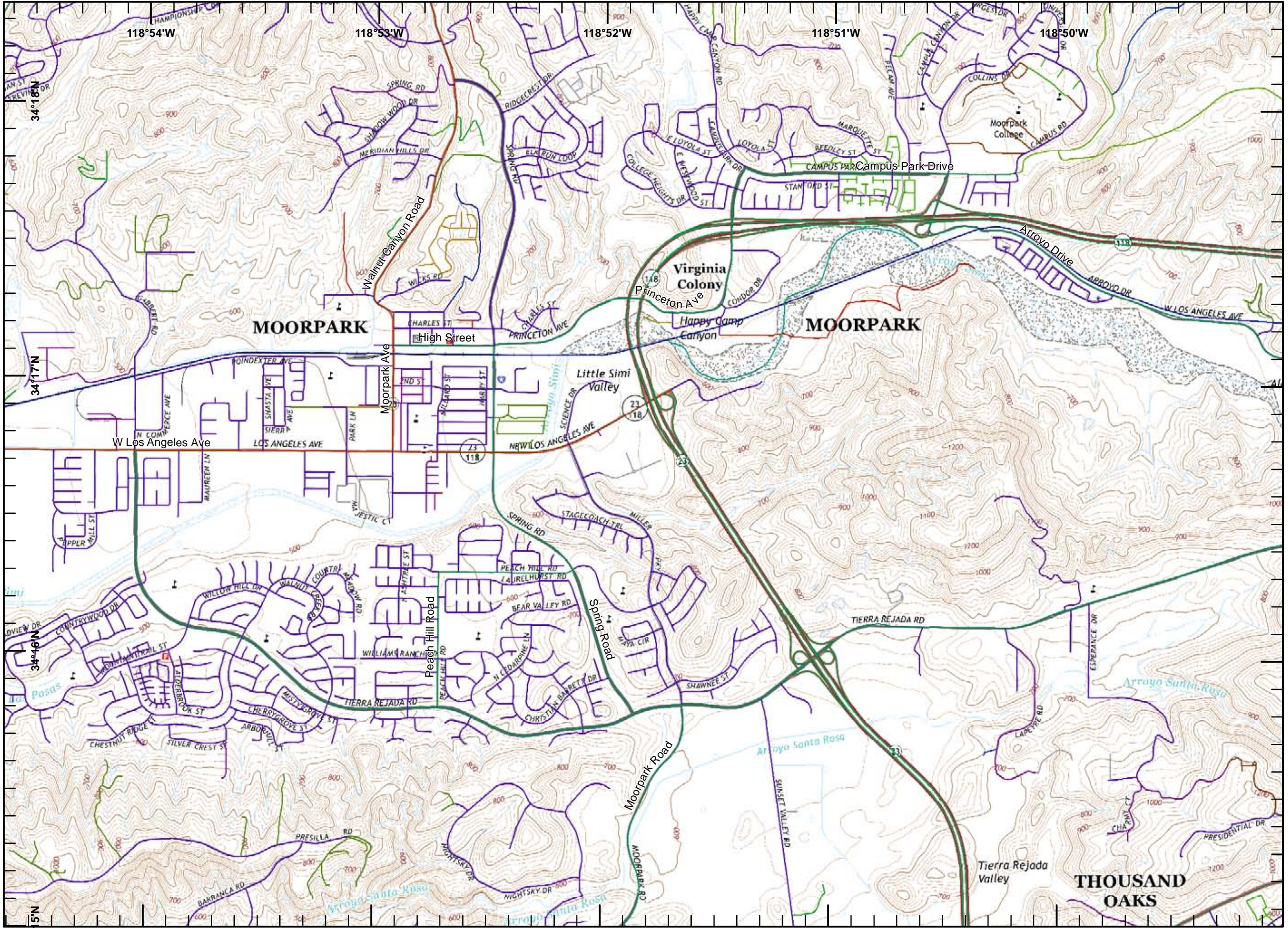
CA-LAC-338981
November 11, 2018
Page 1 of 19



Miles
0 0.125 0.25 0.5

1:24,000

11/11/2018
01:54 hrs

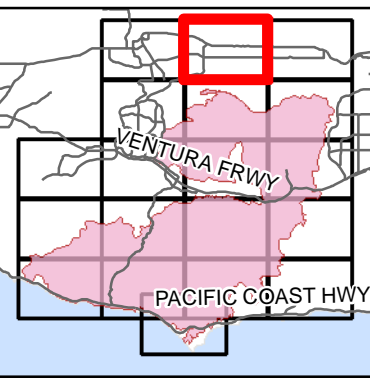




IAP MAP Woolsey Incident

CA-LAC-338981
November 11, 2018
Page 2 of 19

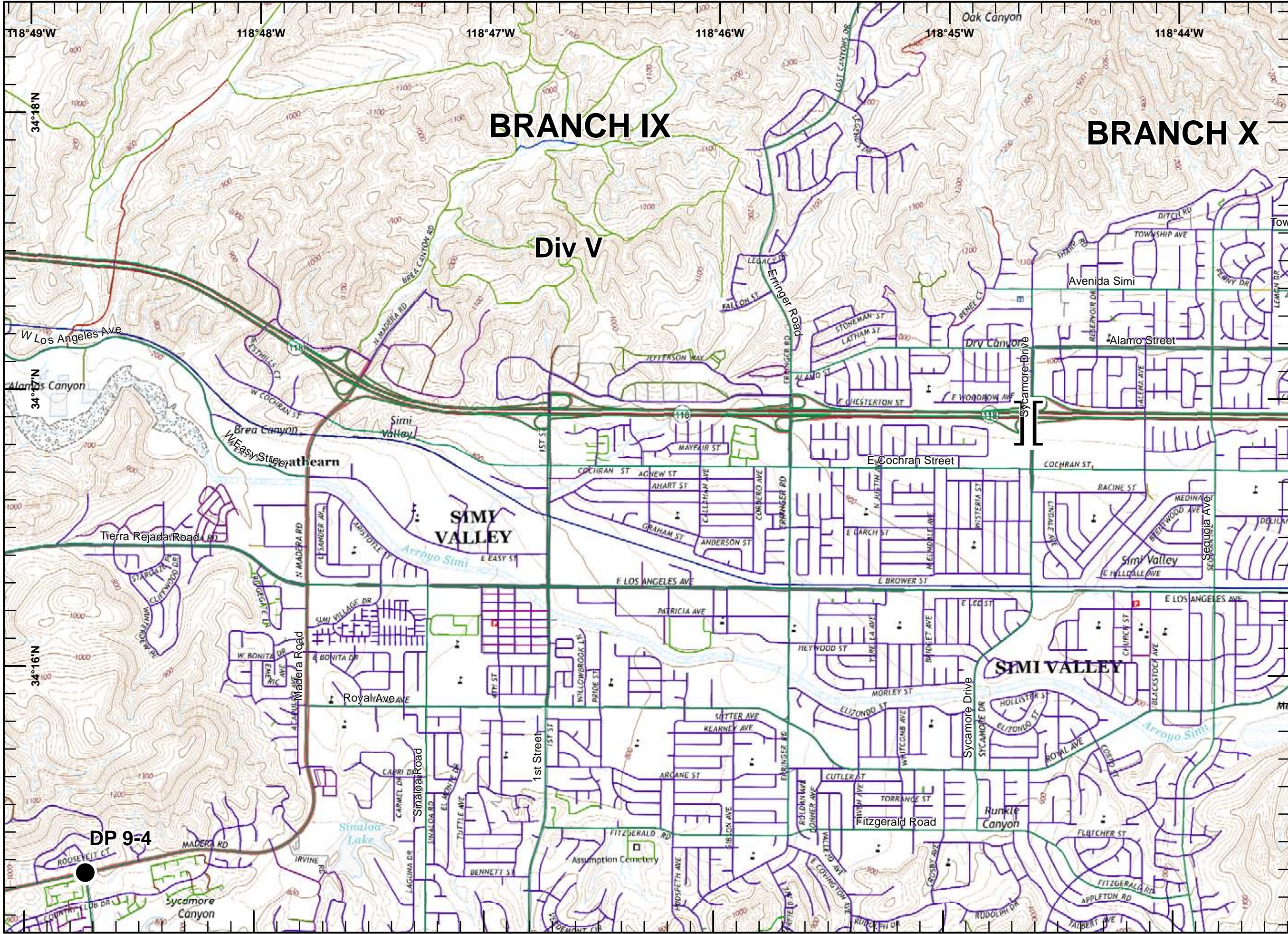
- [[Branch Break
- Drop Point



Miles
0 0.125 0.25 0.5

1:24,000

11/11/2018
01:54 hrs



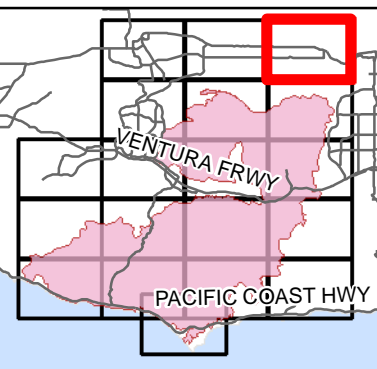


IAP MAP

Woolsey Incident

CA-LAC-338981
November 11, 2018
Page 3 of 19

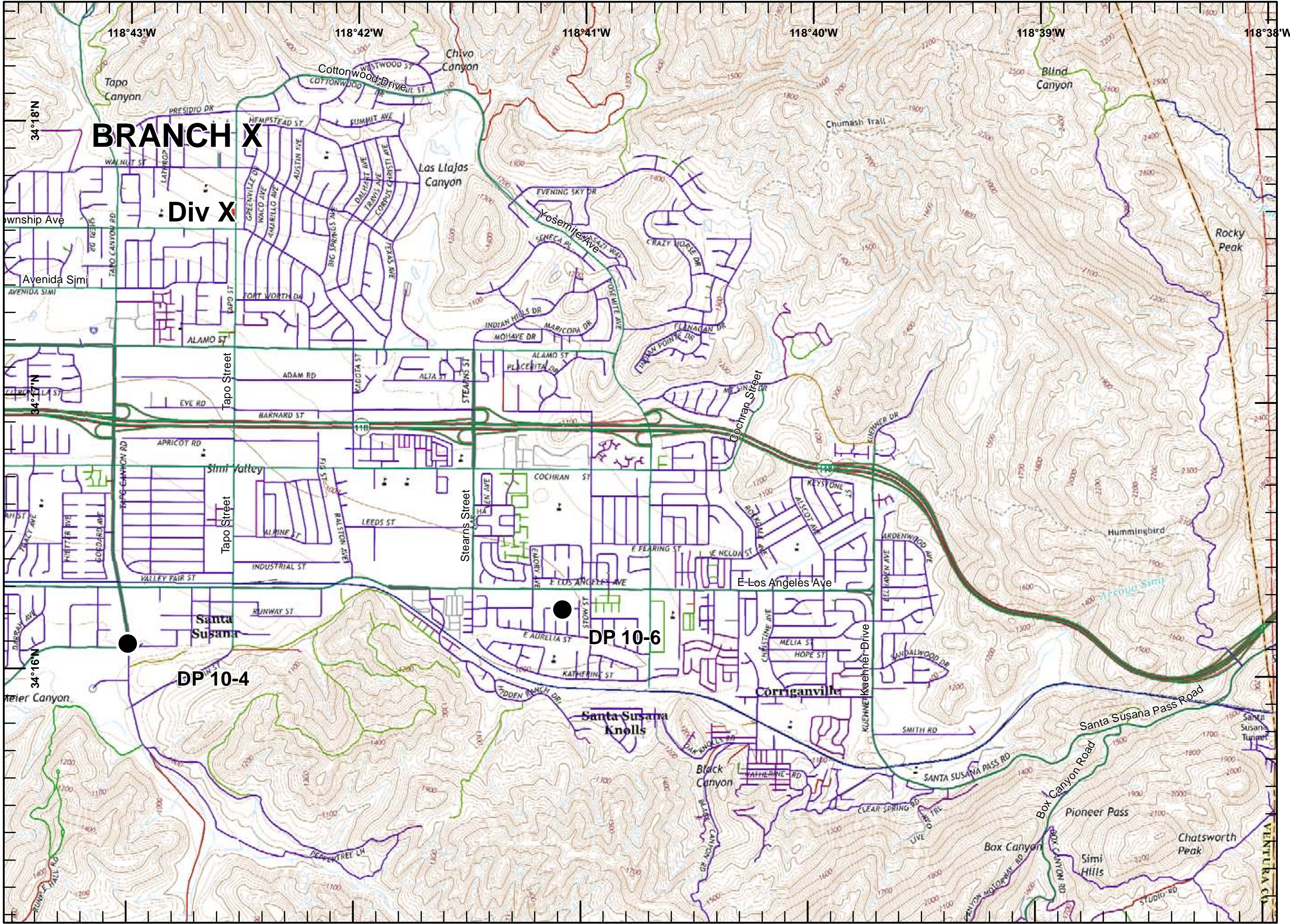
● Drop Point



Miles
0 0.125 0.25 0.5

1:24,000

11/11/2018
01:54 hrs



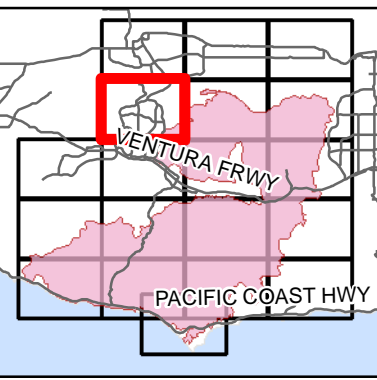


IAP MAP

Woolsey Incident

CA-LAC-338981
 November 11, 2018
 Page 4 of 19

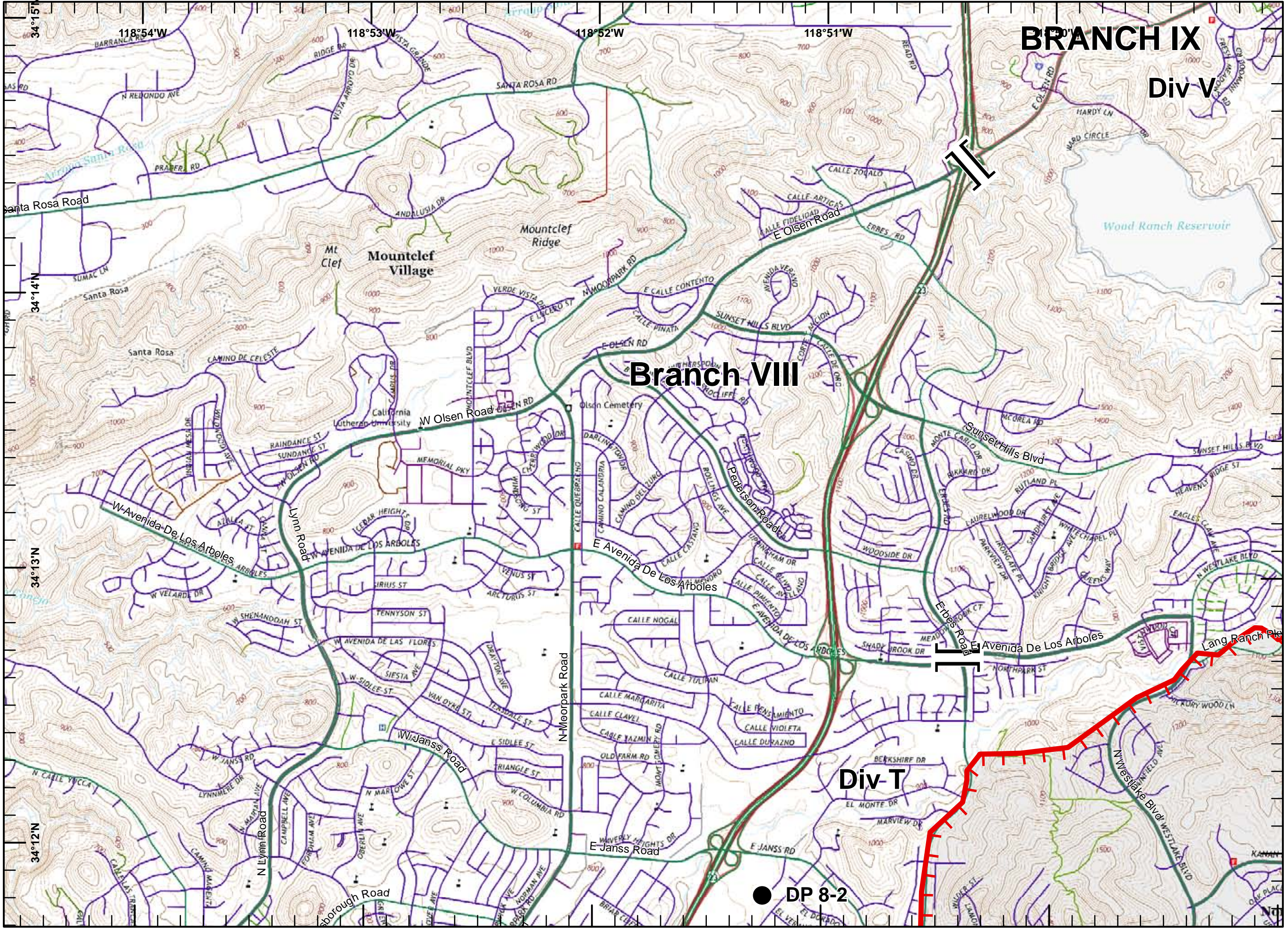
- Uncontrolled Fire Edge
- Branch Break
- Drop Point



Miles
 0 0.125 0.25 0.5

1:24,000

11/11/2018
 01:54 hrs






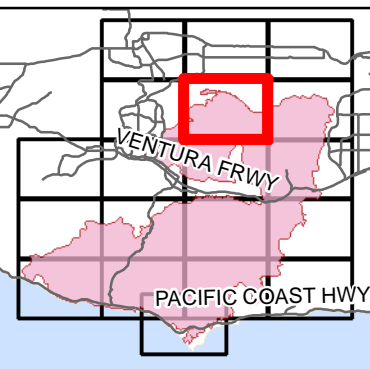


IAP MAP

Woolsey Incident

CA-LAC-338981
 November 11, 2018
 Page 5 of 19

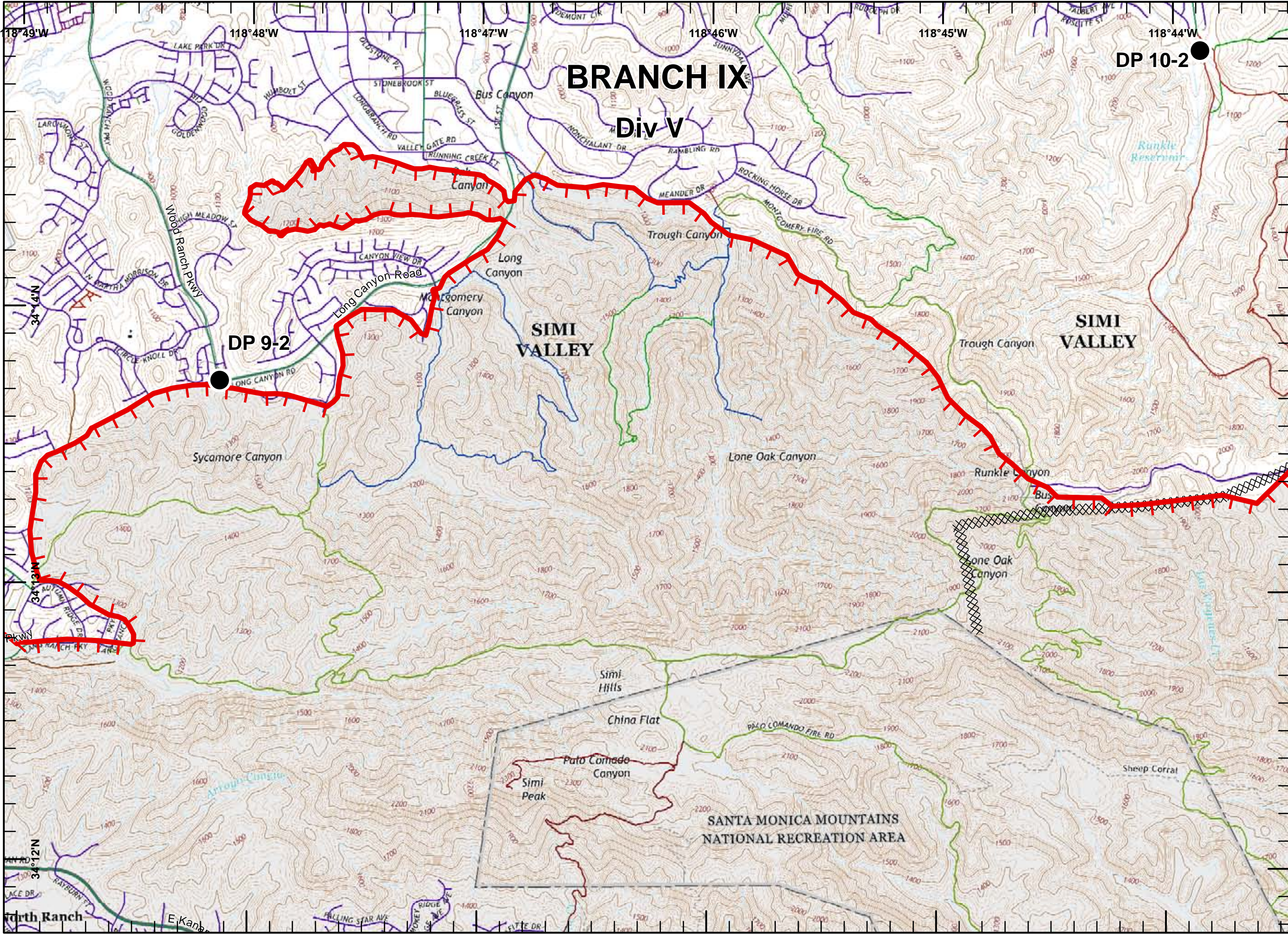
-  Uncontrolled Fire Edge
-  Completed Dozer Line
-  Drop Point



Miles
 0 0.125 0.25 0.5

1:24,000

11/11/2018
 01:54 hrs



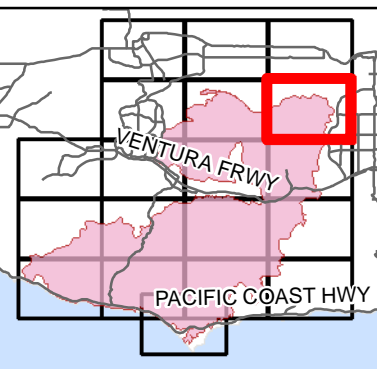


IAP MAP

Woolsey Incident

CA-LAC-338981
 November 11, 2018
 Page 6 of 19

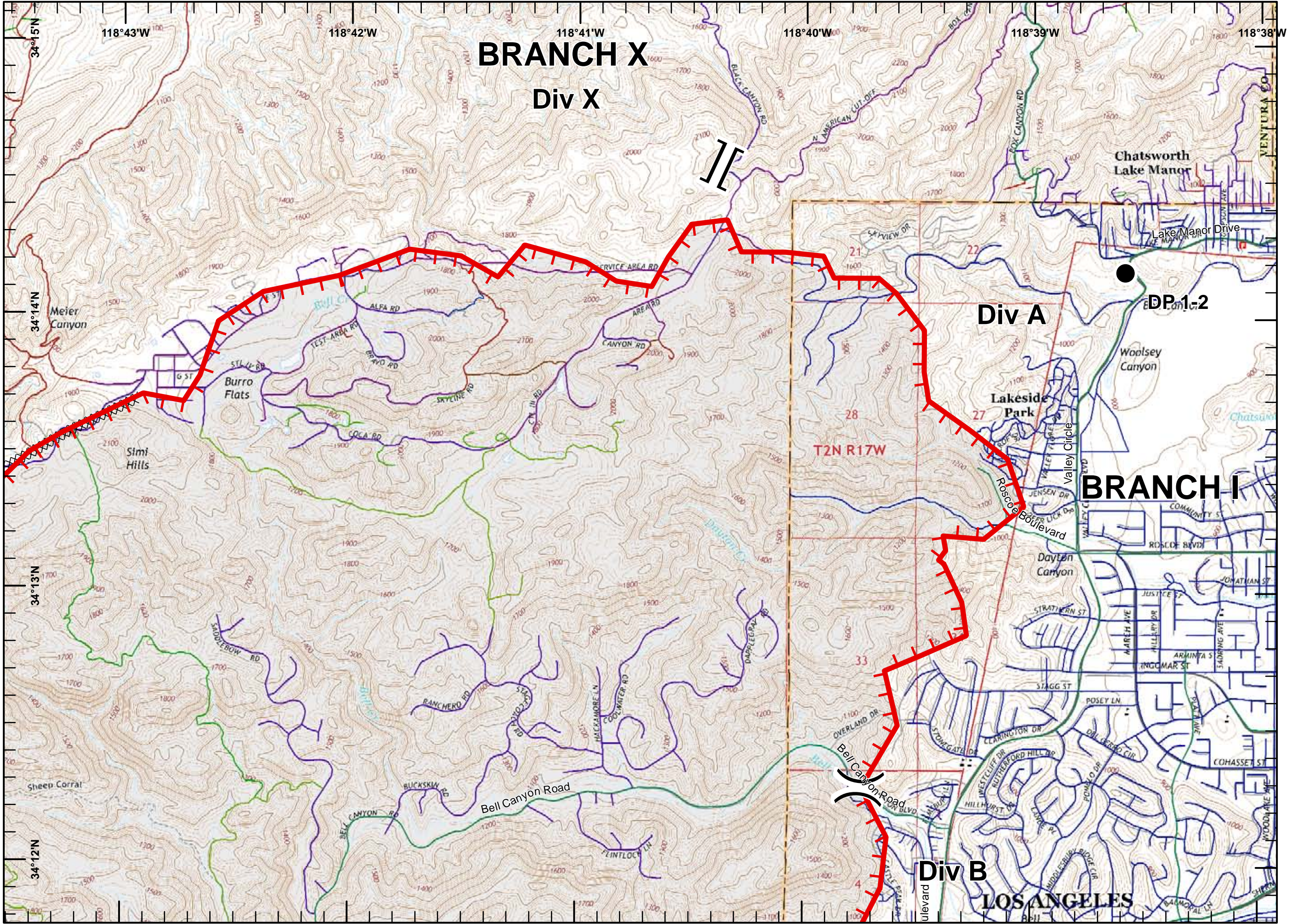
- Uncontrolled Fire Edge
- Completed Dozer Line
- Division Break
- Branch Break
- Drop Point



Miles
 0 0.125 0.25 0.5

1:24,000

11/11/2018
 01:55 hrs

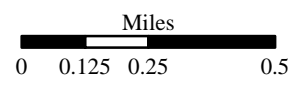
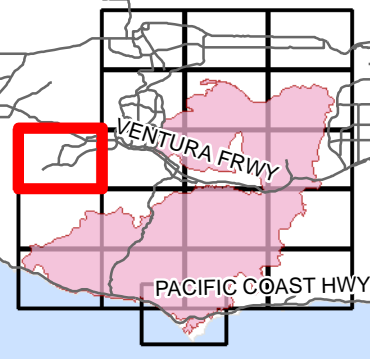




IAP MAP

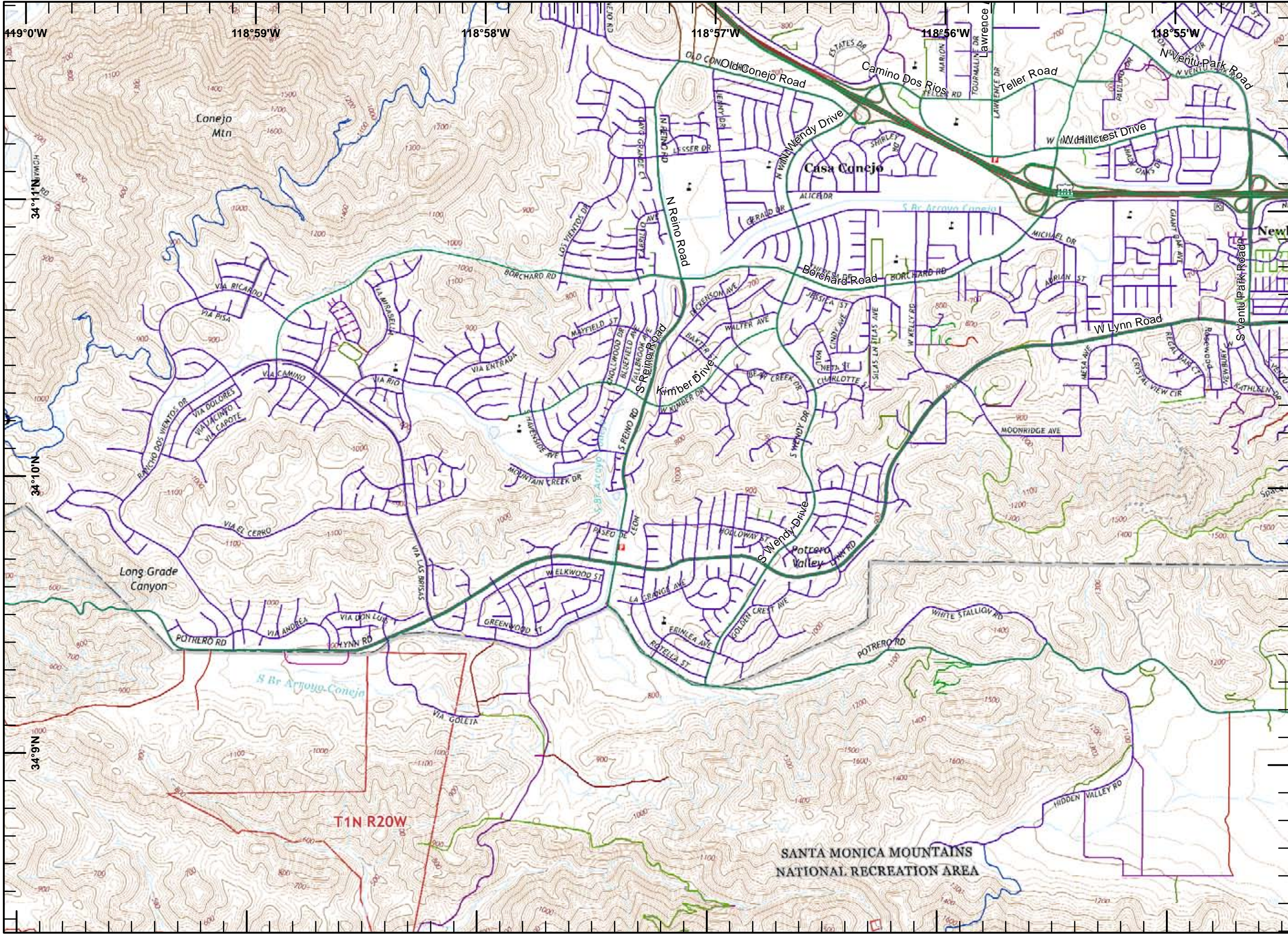
Woolsey Incident

CA-LAC-338981
November 11, 2018
Page 7 of 19



1:24,000

11/11/2018
01:55 hrs



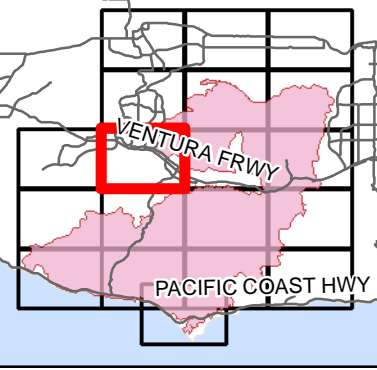


IAP MAP

Woolsey Incident

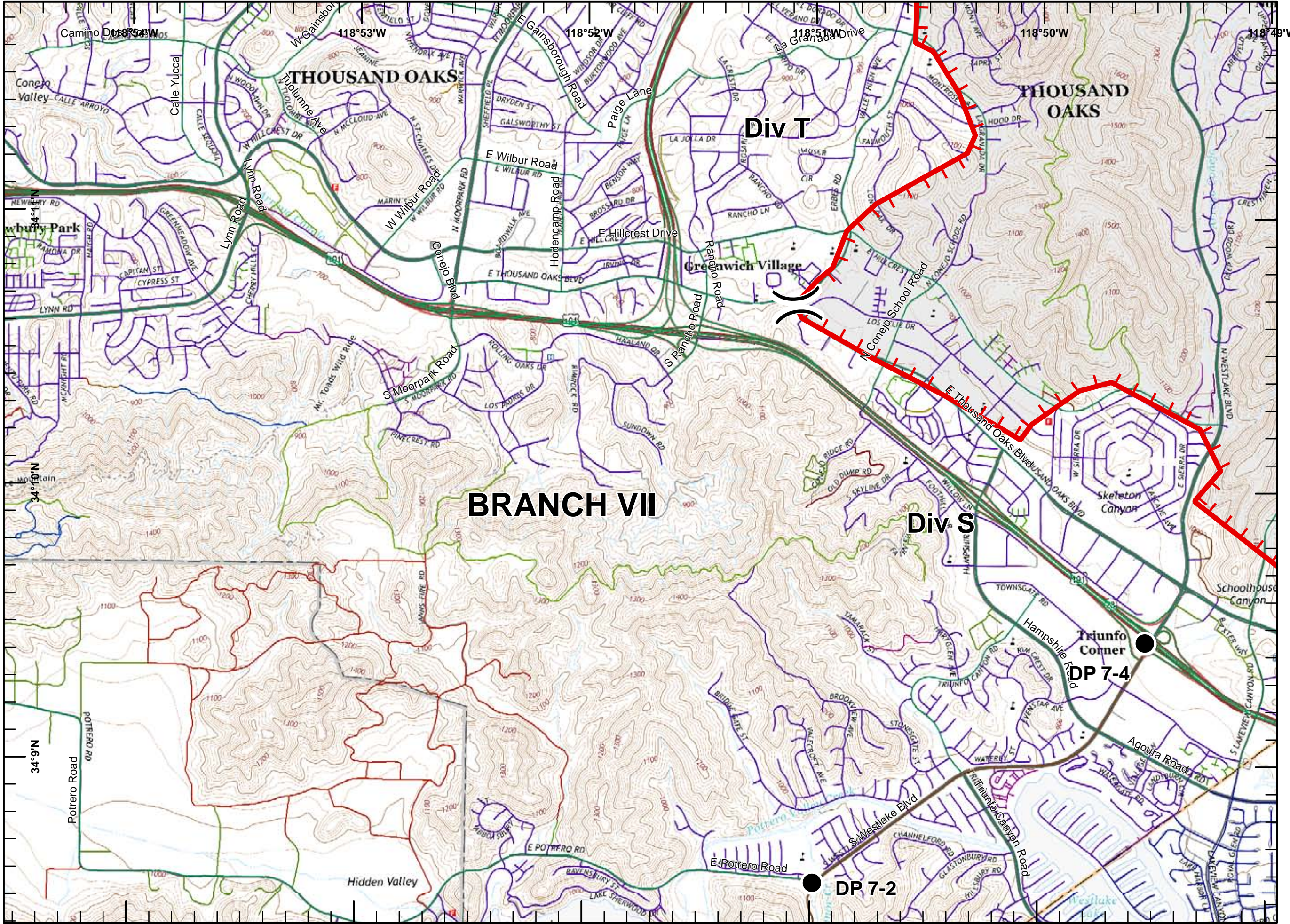
CA-LAC-338981
 November 11, 2018
 Page 8 of 19

- Uncontrolled Fire Edge
- Division Break
- Dip Site
- Drop Point



Miles
 0 0.125 0.25 0.5

1:24,000
 11/11/2018
 01:55 hrs



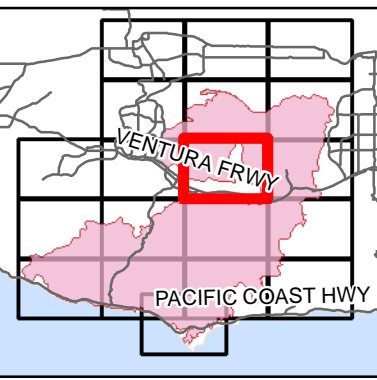


IAP MAP

Woolsey Incident

CA-LAC-338981
November 11, 2018
Page 9 of 19

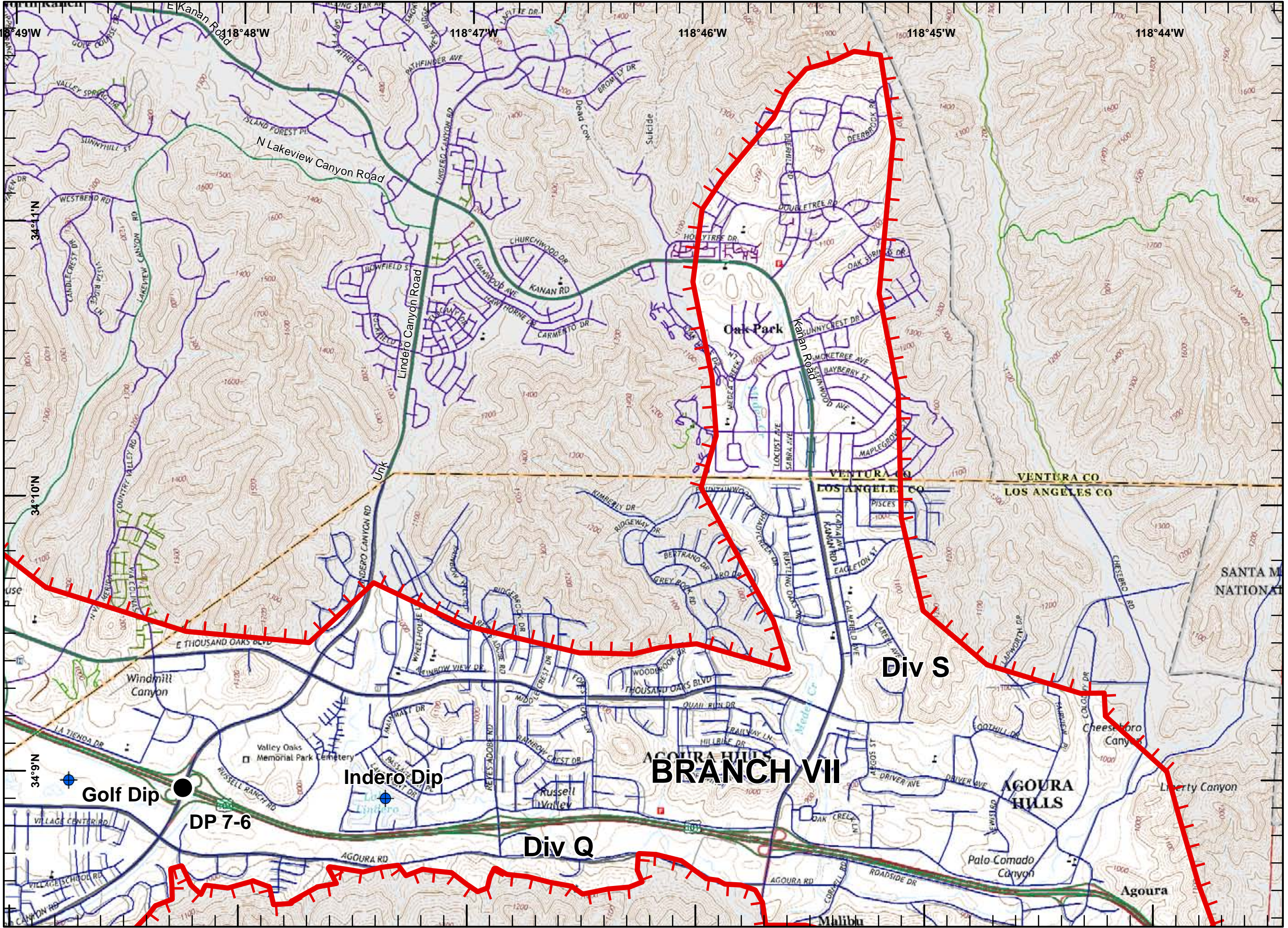
- Uncontrolled Fire Edge
- Dip Site
- Drop Point



Miles
0 0.125 0.25 0.5

1:24,000

11/11/2018
01:55 hrs



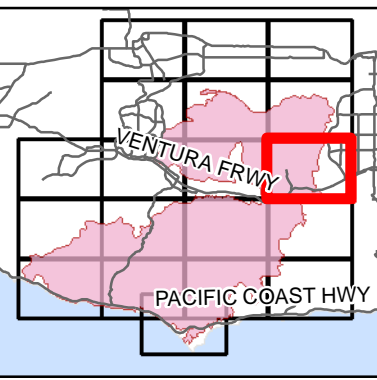


IAP MAP

Woolsey Incident

CA-LAC-338981
November 11, 2018
Page 10 of 19

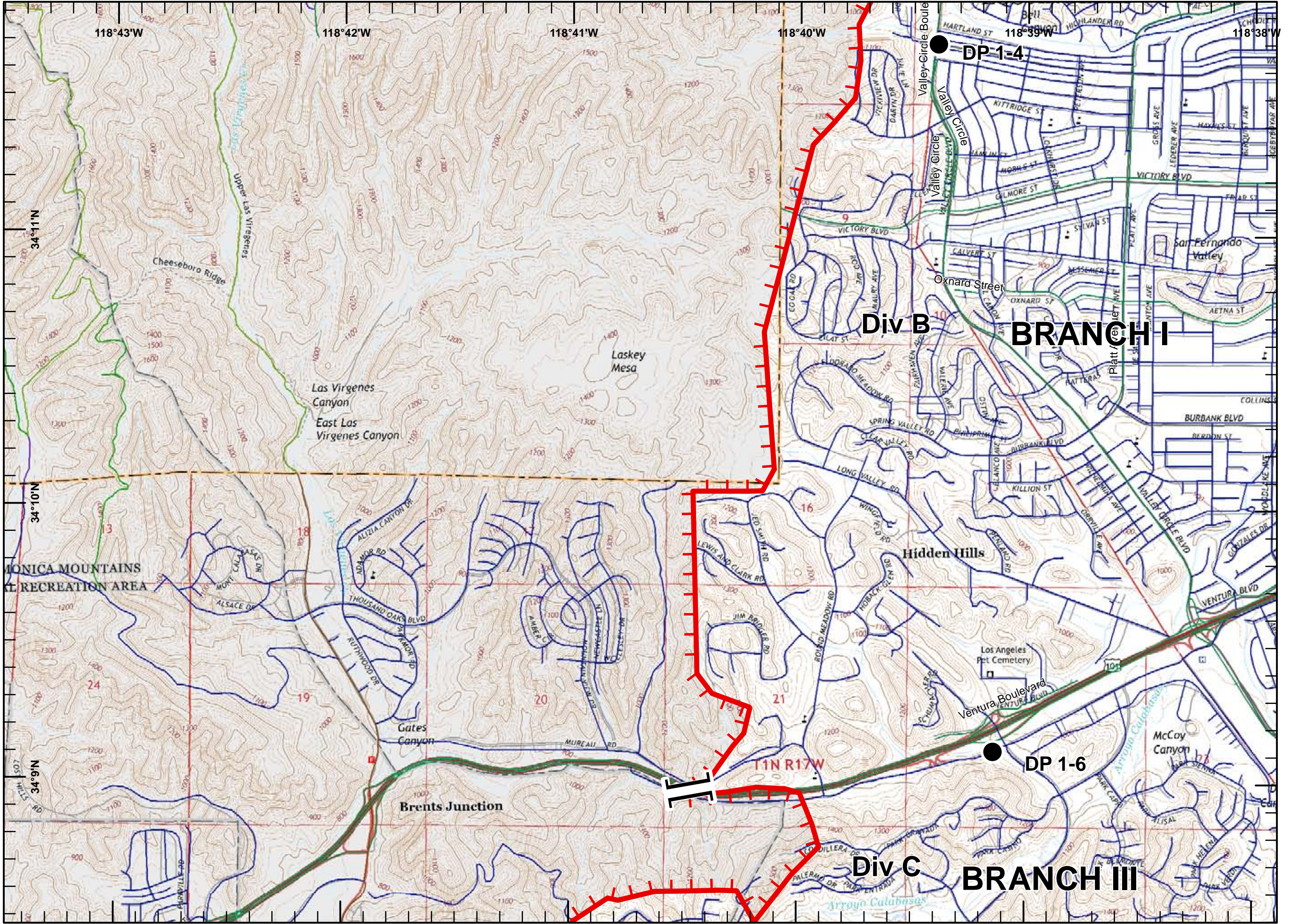
- Uncontrolled Fire Edge
- Branch Break
- Drop Point



Miles
0 0.125 0.25 0.5

1:24,000

11/11/2018
01:55 hrs



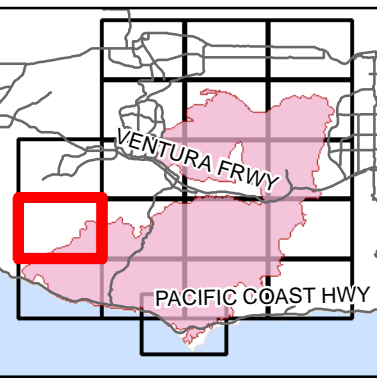


IAP MAP

Woolsey Incident

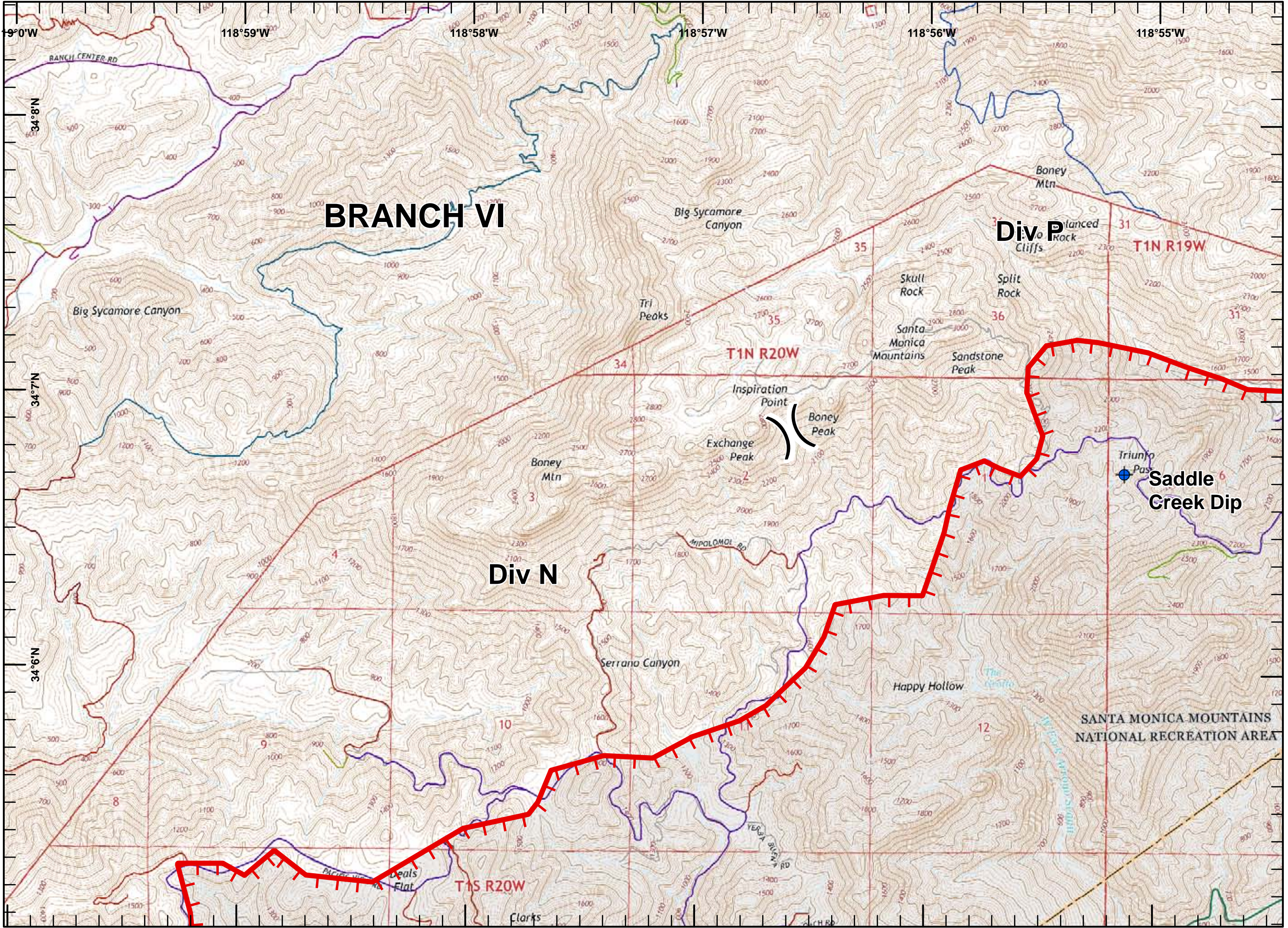
CA-LAC-338981
November 11, 2018
Page 11 of 19

- Uncontrolled Fire Edge
- Division Break
- Dip Site



Miles
0 0.125 0.25 0.5

1:24,000
11/11/2018 01:56 hrs



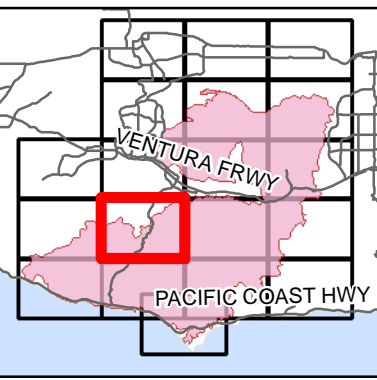


IAP MAP

Woolsey Incident

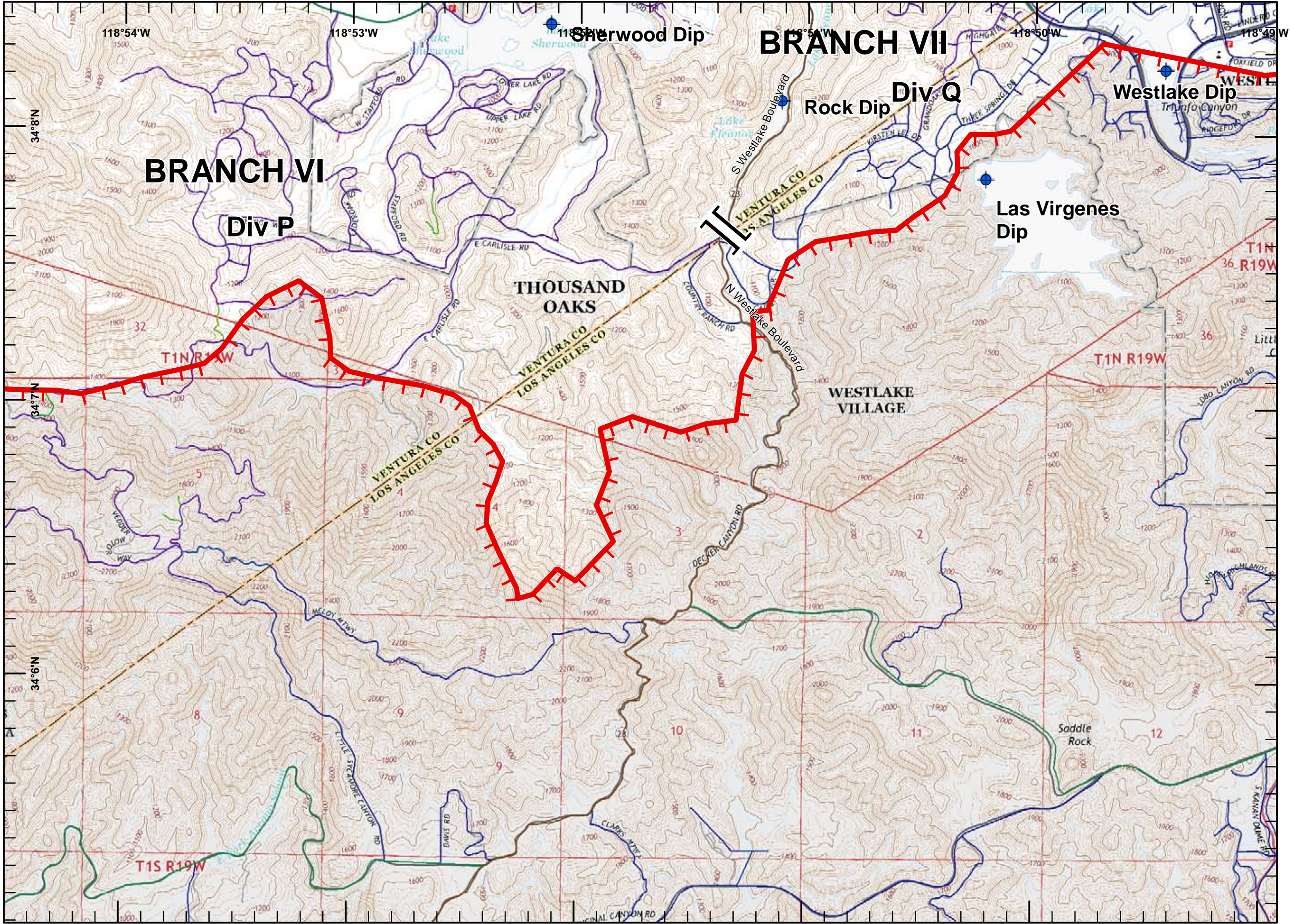
CA-LAC-338981
November 11, 2018
Page 12 of 19

- Uncontrolled Fire Edge
- Branch Break
- Dip Site



Miles
0 0.125 0.25 0.5

1:24,000
11/11/2018
01:56 hrs



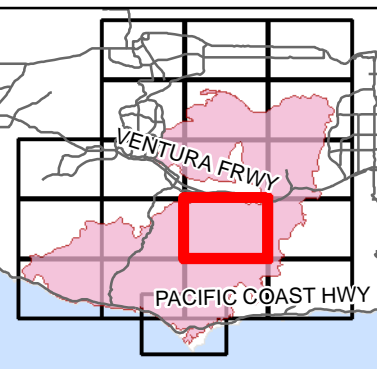


IAP MAP

Woolsey Incident

CA-LAC-338981
 November 11, 2018
 Page 13 of 19

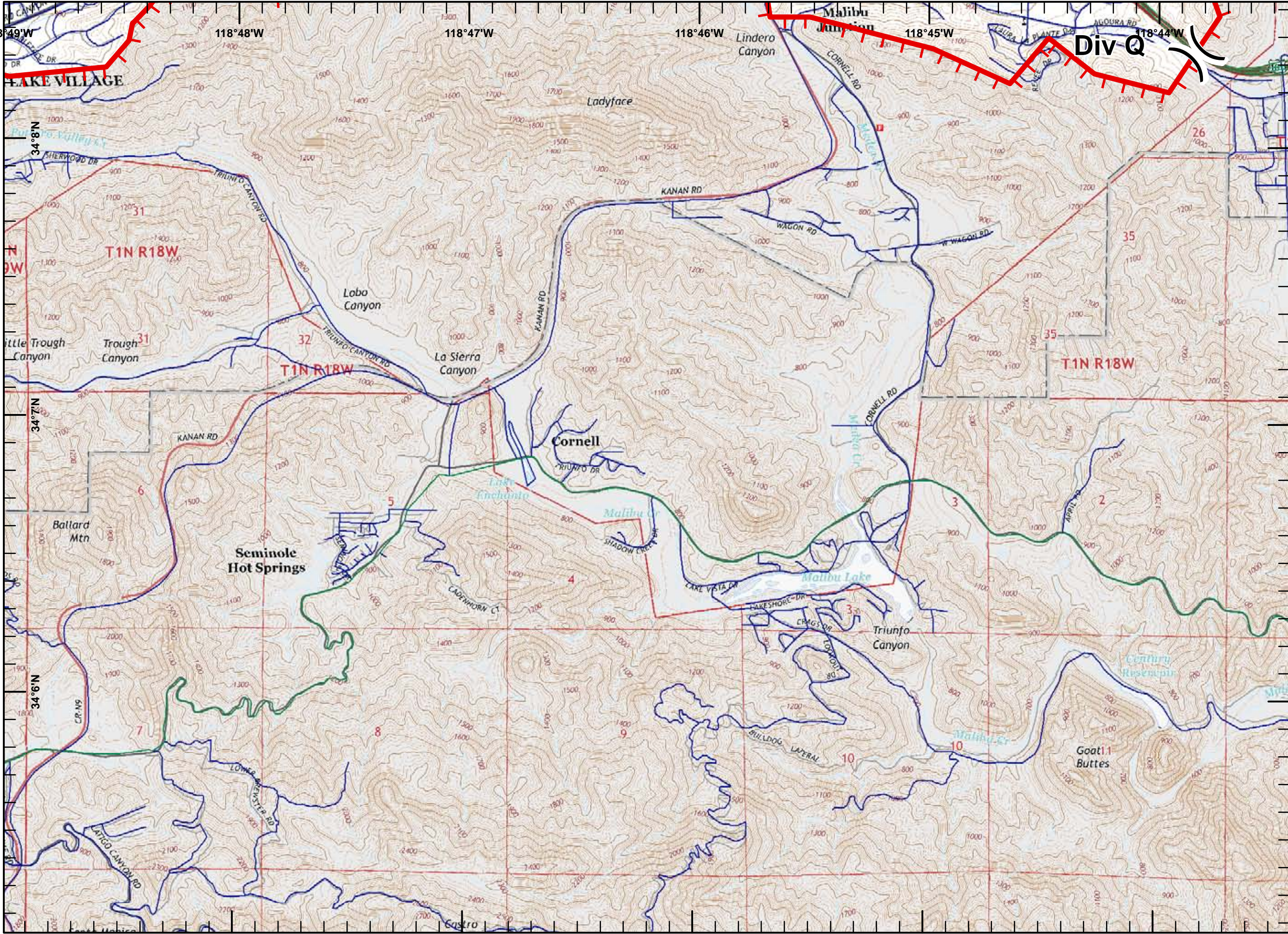
Uncontrolled Fire Edge
 Division Break



Miles
 0 0.125 0.25 0.5

1:24,000

11/11/2018
 01:56 hrs



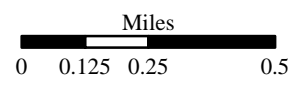
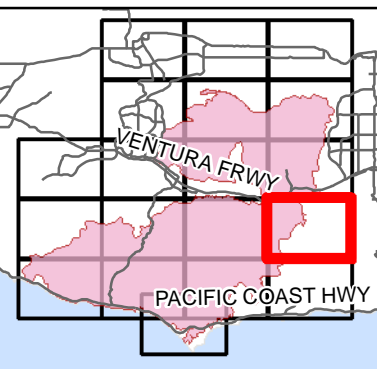


IAP MAP

Woolsey Incident

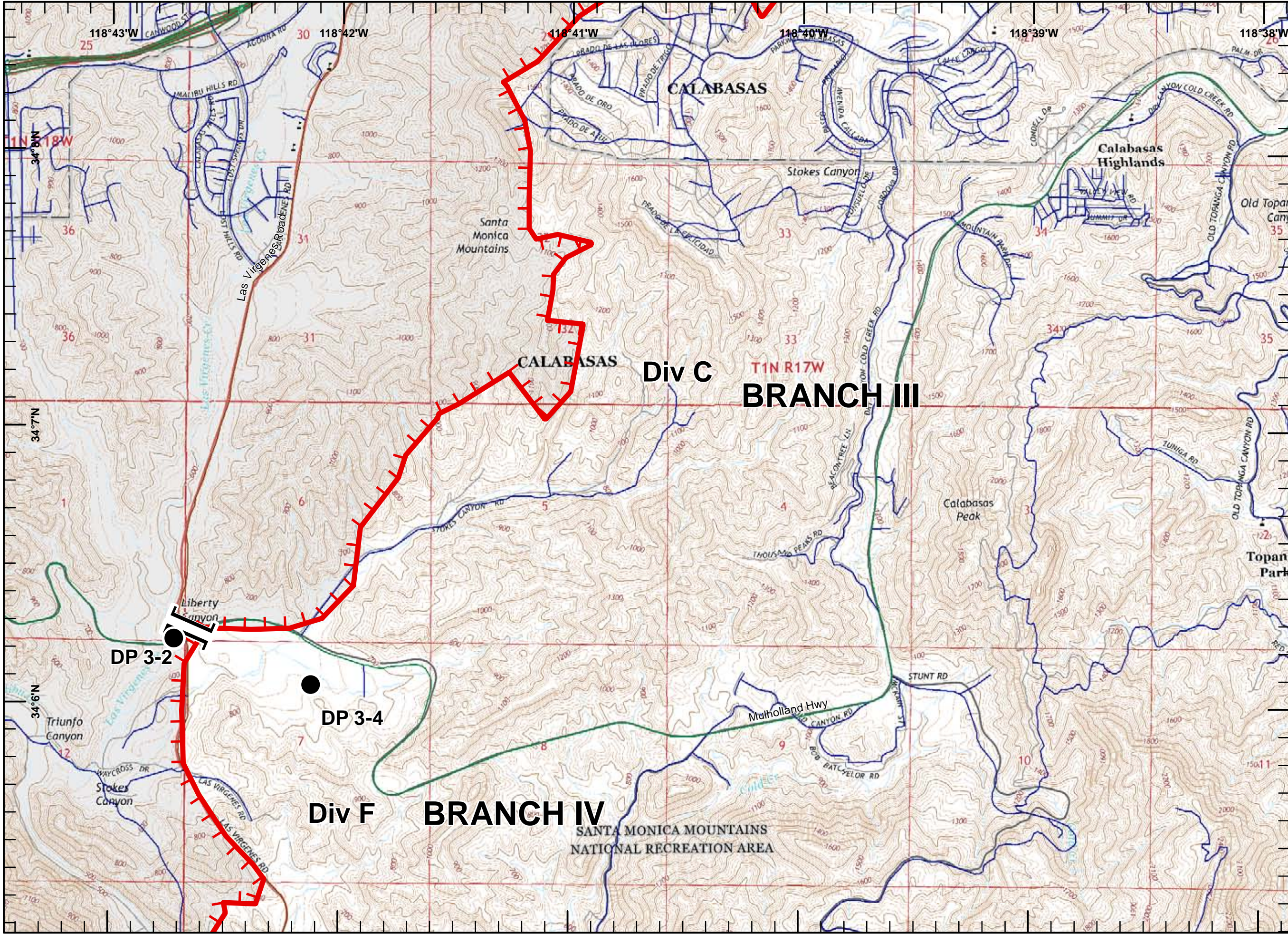
CA-LAC-338981
November 11, 2018
Page 14 of 19

- Uncontrolled Fire Edge
- Branch Break
- Drop Point



1:24,000

11/11/2018
01:56 hrs

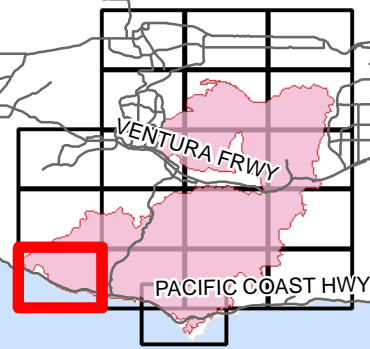




IAP MAP Woolsey Incident

CA-LAC-338981
November 11, 2018
Page 15 of 19

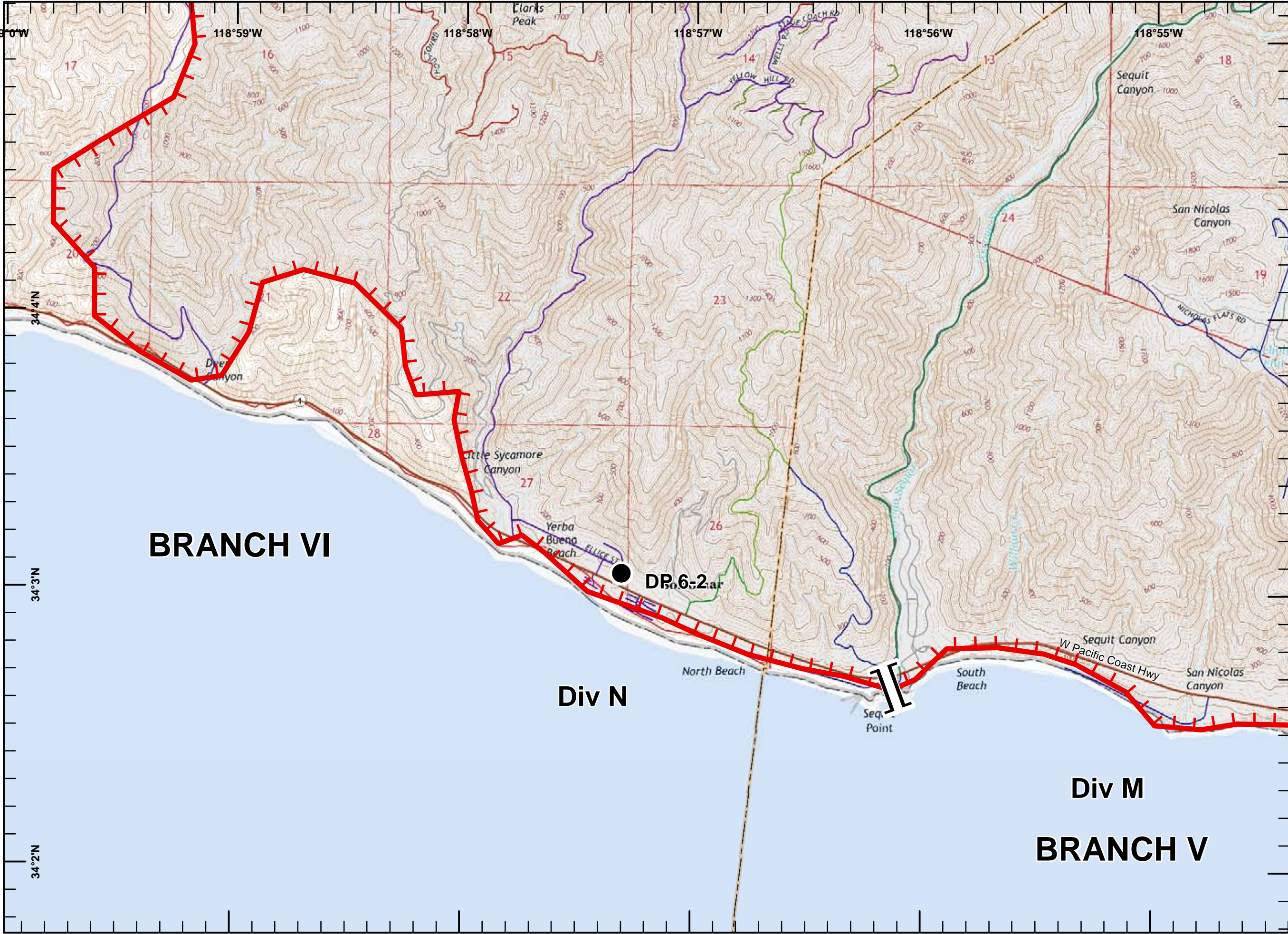
- Uncontrolled Fire Edge
- Ocean
- Branch Break
- Drop Point



Miles
0 0.125 0.25 0.5

1:24,000

11/11/2018
01:57 hrs






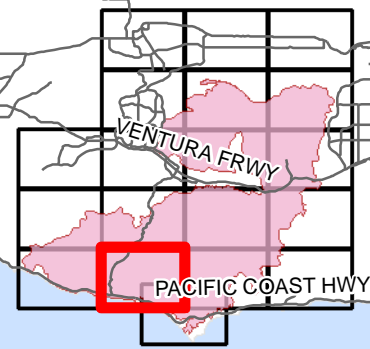


IAP MAP

Woolsey Incident

CA-LAC-338981
 November 11, 2018
 Page 16 of 19

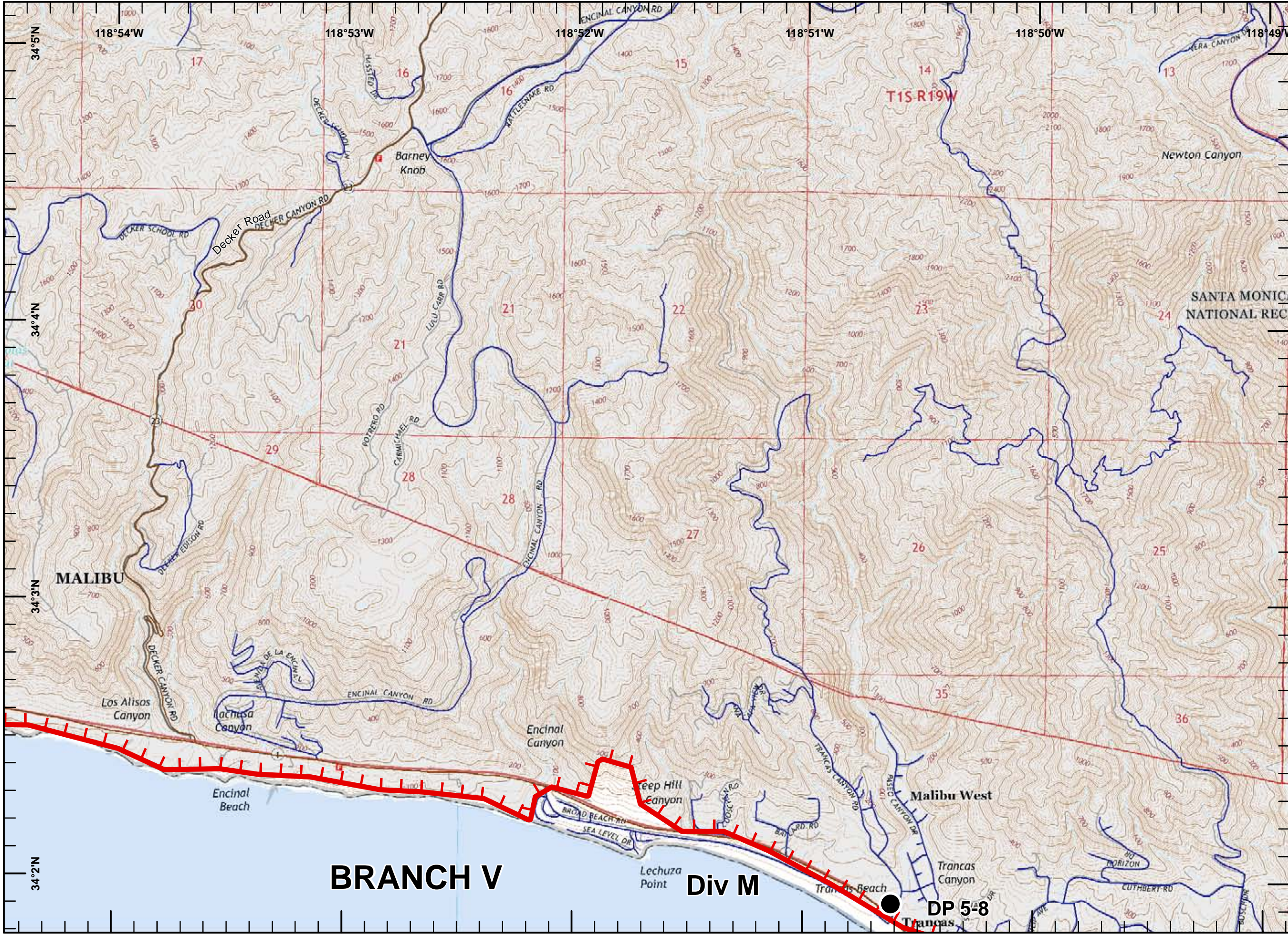
-  Uncontrolled Fire Edge
-  Ocean
-  Drop Point



Miles
 0 0.125 0.25 0.5

1:24,000

11/11/2018
 01:57 hrs





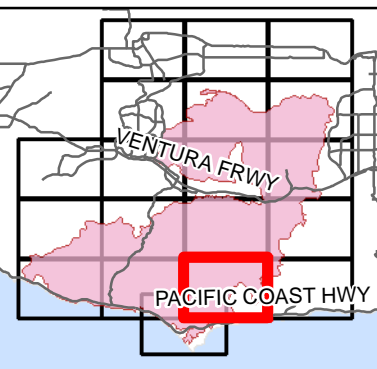


IAP MAP

Woolsey Incident

CA-LAC-338981
November 11, 2018
Page 18 of 19

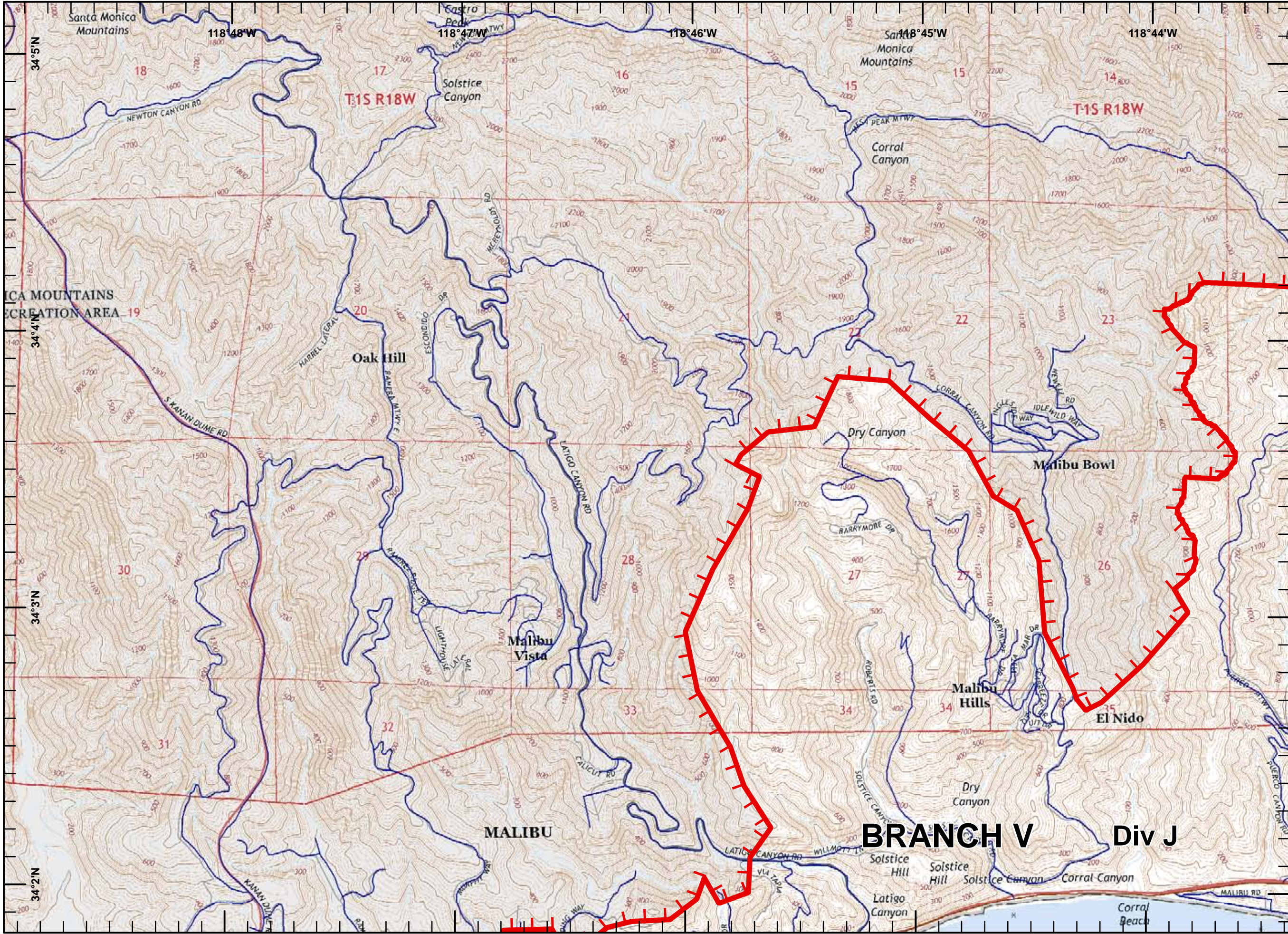
 Uncontrolled Fire Edge
 Ocean



Miles
0 0.125 0.25 0.5

1:24,000

11/11/2018
01:57 hrs



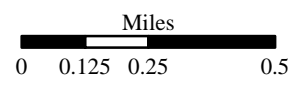
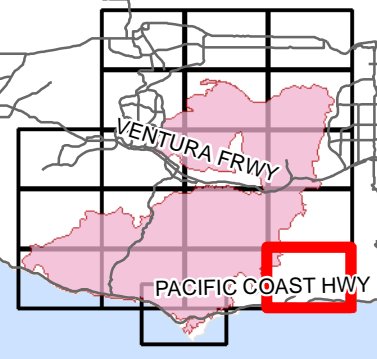


IAP MAP

Woolsey Incident

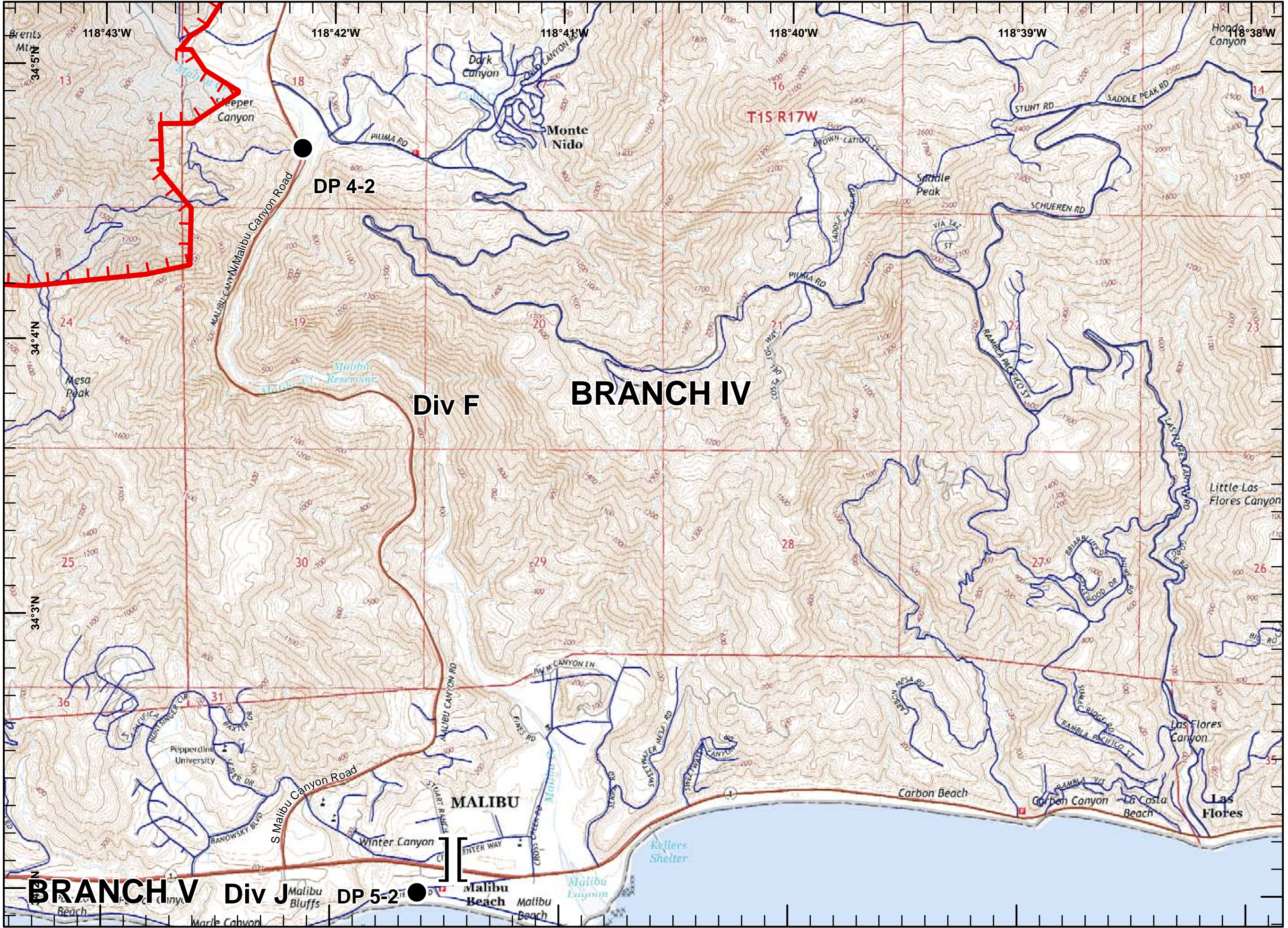
CA-LAC-338981
November 11, 2018
Page 19 of 19

- Uncontrolled Fire Edge
- Ocean
- Branch Break
- Drop Point



1:24,000

11/11/2018
01:57 hrs



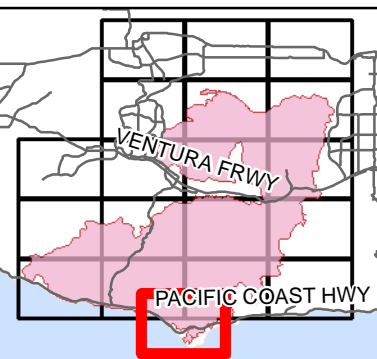


IAP MAP

Woolsey Incident

CA-LAC-338981
November 11, 2018
Page 17 of 19

- Uncontrolled Fire Edge
- Ocean
- Division Break
- Drop Point



Miles
0 0.125 0.25 0.5

1:24,000

11/11/2018
01:57 hrs

