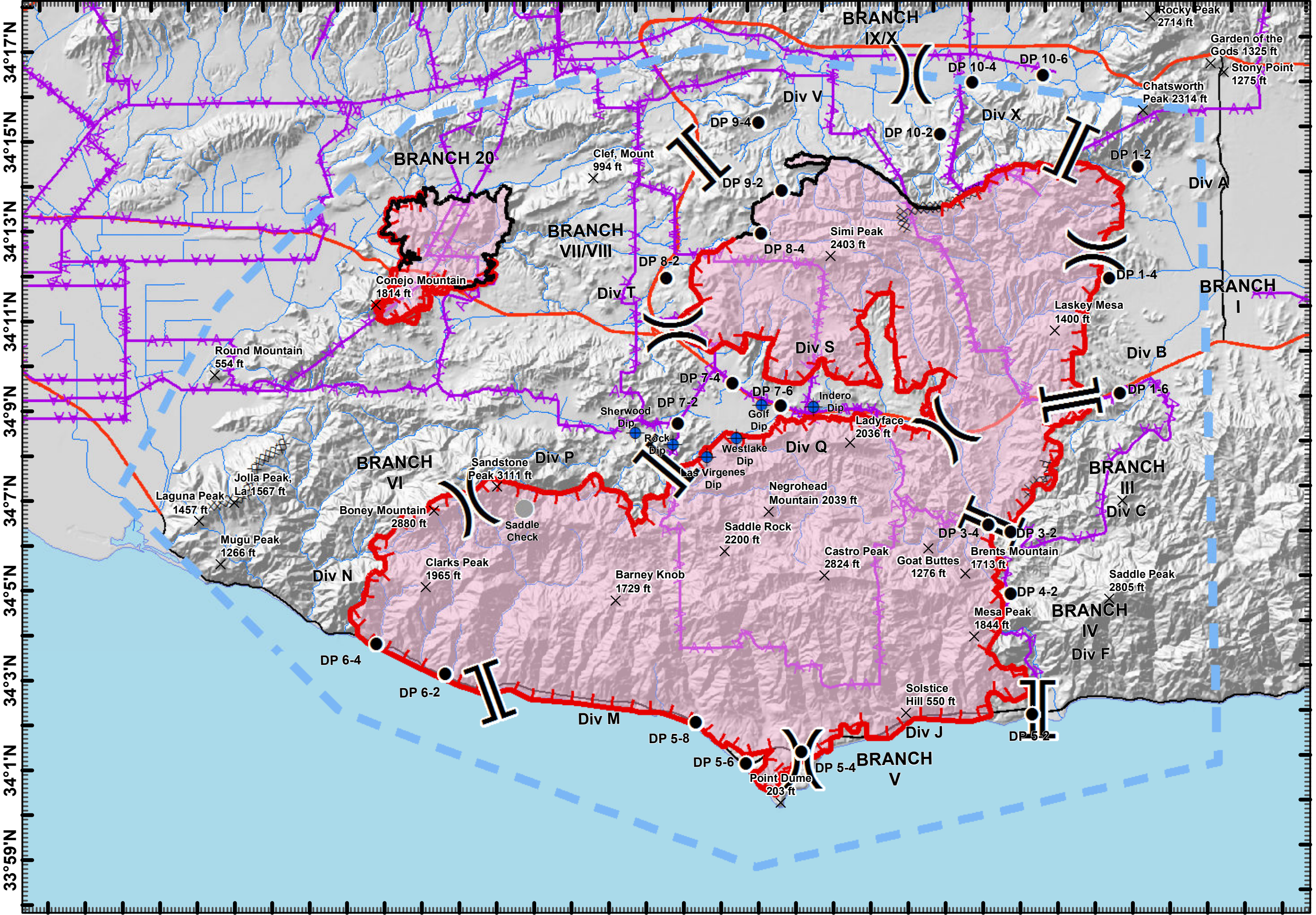


119°8'W 119°5'W 119°3'W 119°1'W 118°58'W 118°55'W 118°52'W 118°49'W 118°46'W 118°43'W 118°40'W 118°37'W 118°34'W



AIR OPERATIONS
Woolsey Incident
 CA-LAC-3389981
 November 12, 2018

Legend

- X Summits
- Uncontrolled Fire Edge
- Completed Line
- Temporary Flight Restriction
- Wildfire Daily Fire Perimeter
- Transmission Lines
- Branch Break
- Division Break
- Dip Site
- Drop Point
- Other

0 0.5 1 2 Miles

1:145,000

MT2 GIS 11/12/2018 1:05 AM

DISCLAIMER: The displayed incident data is approximate and should only be used for informational purposes. The information contained in supporting base layers was generated from GIS data maintained by different sources and agencies and is not necessarily accurate to mapping, surveying, or engineering standards.

Point Type	Label	Latitude	Longitude
Dip Site	Indero Dip	34° 8.910' N	118° 47.360' W
Dip Site	Golf Dip	34° 8.967' N	118° 48.744' W
Dip Site	Westlake Dip	34° 8.238' N	118° 49.431' W
Dip Site	Las Virgenes Dip	34° 7.833' N	118° 50.218' W
Dip Site	Rock Dip	34° 8.117' N	118° 51.115' W
Dip Site	Sherwood Dip	34° 8.390' N	118° 52.130' W
Drop Point	DP 1-4	34° 11.697' N	118° 39.396' W
Drop Point	DP 1-6	34° 9.115' N	118° 39.140' W
Drop Point	DP 3-2	34° 6.232' N	118° 42.719' W
Drop Point	DP 5-6	34° 0.988' N	118° 49.282' W
Drop Point	DP 7-6	34° 8.943' N	118° 48.246' W
Drop Point	DP 7-4	34° 9.448' N	118° 49.536' W
Drop Point	DP 8-2	34° 11.832' N	118° 51.256' W
Drop Point	DP 9-4	34° 15.255' N	118° 48.735' W
Drop Point	DP 10-4	34° 16.093' N	118° 42.999' W
Drop Point	DP 10-2	34° 14.953' N	118° 43.880' W
Drop Point	DP 10-6	34° 16.228' N	118° 41.088' W
Drop Point	DP 1-2	34° 14.168' N	118° 38.595' W
Drop Point	DP 3-4	34° 6.067' N	118° 42.125' W
Drop Point	DP 4-2	34° 4.698' N	118° 42.139' W
Drop Point	DP 5-2	34° 1.994' N	118° 41.618' W
Drop Point	DP 5-4	34° 1.222' N	118° 47.793' W
Drop Point	DP 5-8	34° 1.917' N	118° 50.617' W
Drop Point	DP 6-2	34° 3.063' N	118° 57.311' W
Drop Point	DP 9-2	34° 13.736' N	118° 48.135' W
Drop Point	DP 7-2	34° 8.564' N	118° 50.989' W
Drop Point	DP 6-4	34° 3.745' N	118° 59.132' W
Drop Point	DP 8-4	34° 12.790' N	118° 48.710' W
Other	Saddle Check	34° 6.730' N	118° 55.140' W
Dip Site	Broom Dip	34° 8.843' N	119° 2' 34.008" W
Dip Site	Hospital Dip	34° 10.977' N	119° 1' 32.936" W
Dip Site	Barron Dip	34° 13.875' N	118° 57' 49.693" W
Dip Site	Hill Canyon Dip	34° 12.626' N	118° 55' 33.511" W
Drop Point	DP 20	34° 10.496' N	118° 59' 1.143" W
Drop Point	DP 60	34° 10.277' N	119° 3' 14.283" W
Drop Point	DP 10	34° 13.823' N	118° 55' 50.710" W
Helispot	H-32A	34° 9.875' N	118° 58' 59.372" W
Helispot	H-35A	34° 12.408' N	118° 55' 50.560" W
ICP		34° 12' 28.533" N	119° 4' 53.936" W