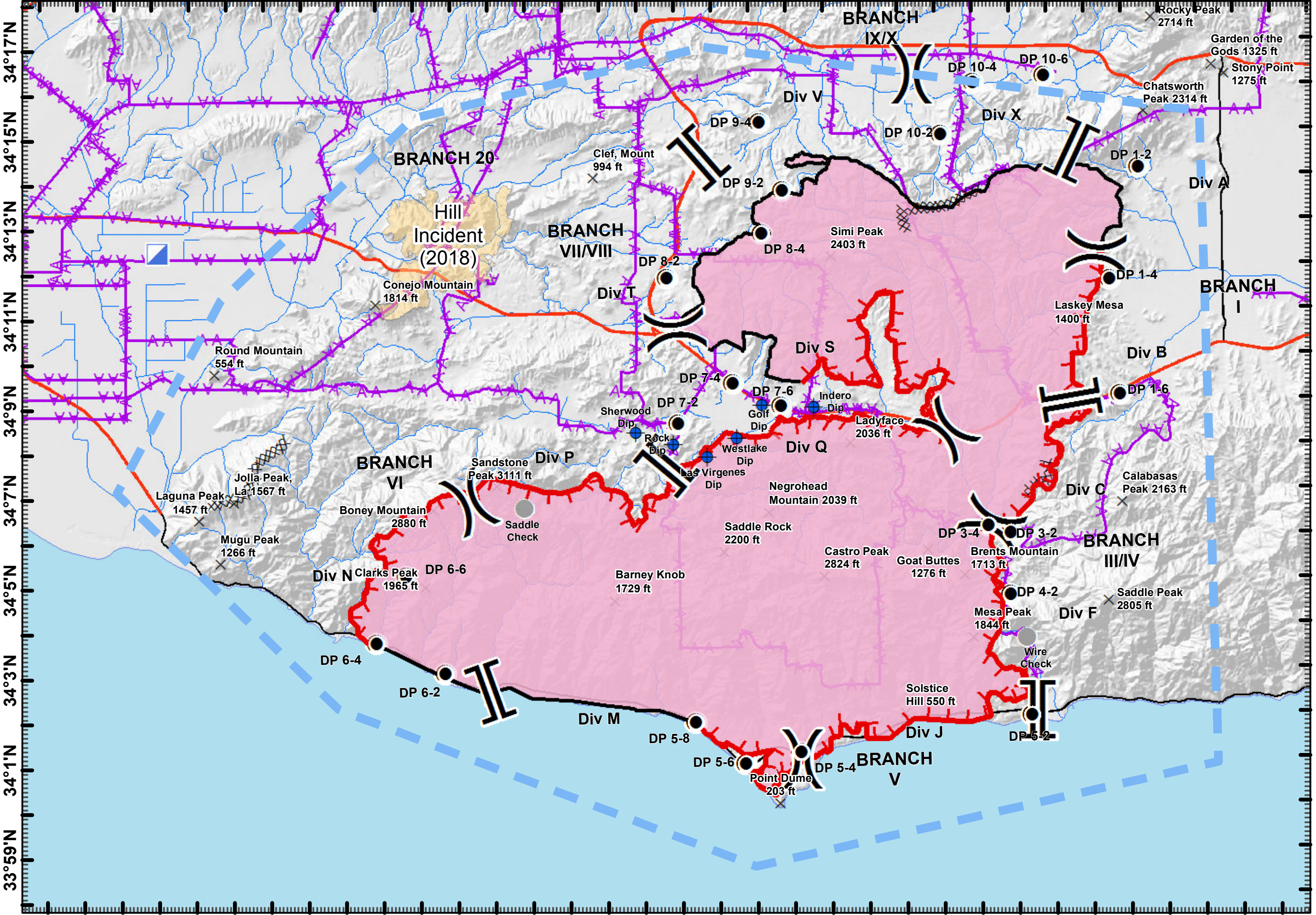


119°8'W 119°5'W 119°3'W 119°1'W 118°58'W 118°55'W 118°52'W 118°49'W 118°46'W 118°43'W 118°40'W 118°37'W 118°34'W



AIR OPERATIONS
Woolsey Incident
CA-LAC-3389981
November 13, 2018

- Legend**
- Branch Break
 - Division Break
 - Dip Site
 - Drop Point
 - ICP
 - Other
 - Uncontrolled Fire Edge
 - Completed Line
 - Completed Dozer Line
 - Temporary Flight Restriction
 - Fire Perimeter
 - Hill Fire (2018)
 - Summits
 - Transmission Lines

TFR #FDC 8/4202
Issue Date: 20181109



1:145,000



MT 2 GIS
11/13/2018
12:03:35 AM

DISCLAIMER:
The displayed incident data is approximate and should only be used for informational purposes. The information contained in supporting base layers was generated from GIS data maintained by different sources and agencies and is not necessarily accurate to mapping, surveying, or engineering standards.

Point Type	Label	Latitude	Longitude
Dip Site	Indero Dip	34° 8.910' N	118° 47.360' W
Dip Site	Golf Dip	34° 8.967' N	118° 48.744' W
Dip Site	Westlake Dip	34° 8.238' N	118° 49.431' W
Dip Site	Las Virgenes Dip	34° 7.833' N	118° 50.218' W
Dip Site	Rock Dip	34° 8.117' N	118° 51.115' W
Dip Site	Sherwood Dip	34° 8.390' N	118° 52.130' W
Drop Point	DP 1-4	34° 11.697' N	118° 39.396' W
Drop Point	DP 1-6	34° 9.115' N	118° 39.140' W
Drop Point	DP 3-2	34° 6.232' N	118° 42.719' W
Drop Point	DP 5-6	34° 0.988' N	118° 49.282' W
Drop Point	DP 7-6	34° 8.943' N	118° 48.246' W
Drop Point	DP 7-4	34° 9.448' N	118° 49.536' W
Drop Point	DP 8-2	34° 11.832' N	118° 51.256' W
Drop Point	DP 9-4	34° 15.255' N	118° 48.735' W
Drop Point	DP 10-4	34° 16.093' N	118° 42.999' W
Drop Point	DP 10-2	34° 14.953' N	118° 43.880' W
Drop Point	DP 10-6	34° 16.228' N	118° 41.088' W
Drop Point	DP 1-2	34° 14.168' N	118° 38.595' W
Drop Point	DP 3-4	34° 6.067' N	118° 42.125' W
Drop Point	DP 4-2	34° 4.698' N	118° 42.139' W
Drop Point	DP 5-2	34° 1.994' N	118° 41.618' W
Drop Point	DP 5-4	34° 1.222' N	118° 47.793' W
Drop Point	DP 5-8	34° 1.917' N	118° 50.617' W
Drop Point	DP 6-2	34° 3.063' N	118° 57.311' W
Drop Point	DP 9-2	34° 13.736' N	118° 48.135' W
Drop Point	DP 7-2	34° 8.564' N	118° 50.989' W
Drop Point	DP 6-4	34° 3.745' N	118° 59.132' W
Drop Point	DP 8-4	34° 12.790' N	118° 48.710' W
Drop Point	DP 6-6	34° 5.240' N	118° 58.339' W
ICP		34° 12.476' N	119° 4.899' W
Other	Saddle Check	34° 6.730' N	118° 55.140' W
Other	Wire Check	34° 3.738' N	118° 41.740' W