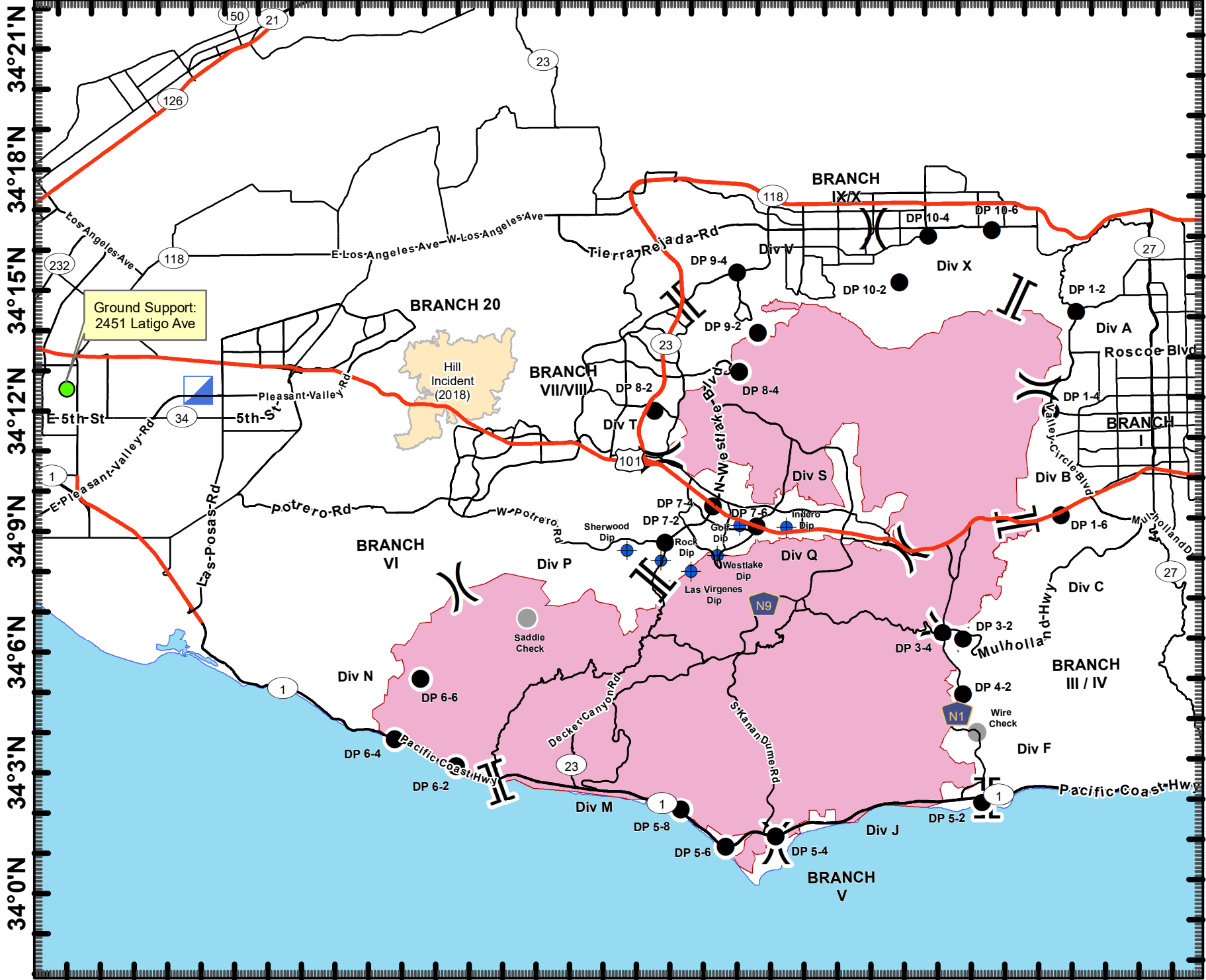
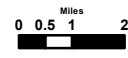


119°9'W 119°3'W 118°59'W 118°55'W 118°51'W 118°47'W 118°43'W 118°39'W 118°35'W



**TRANSPORTATION**  
**Woolsey Incident**  
 CA-LAC-338981  
 November 15, 2018

- Legend**
- Major Highways
  - Highways
  - Major Roads
  - Hill Fire
  - Fire Perimeter
  - Dip Site
  - ICP
  - Other
  - Division Break
  - Branch Break



**1:230,000**



DISCLAIMER:  
 The displayed incident data is approximate and should only be used for informational purposes. The information contained in supporting base layers was generated from