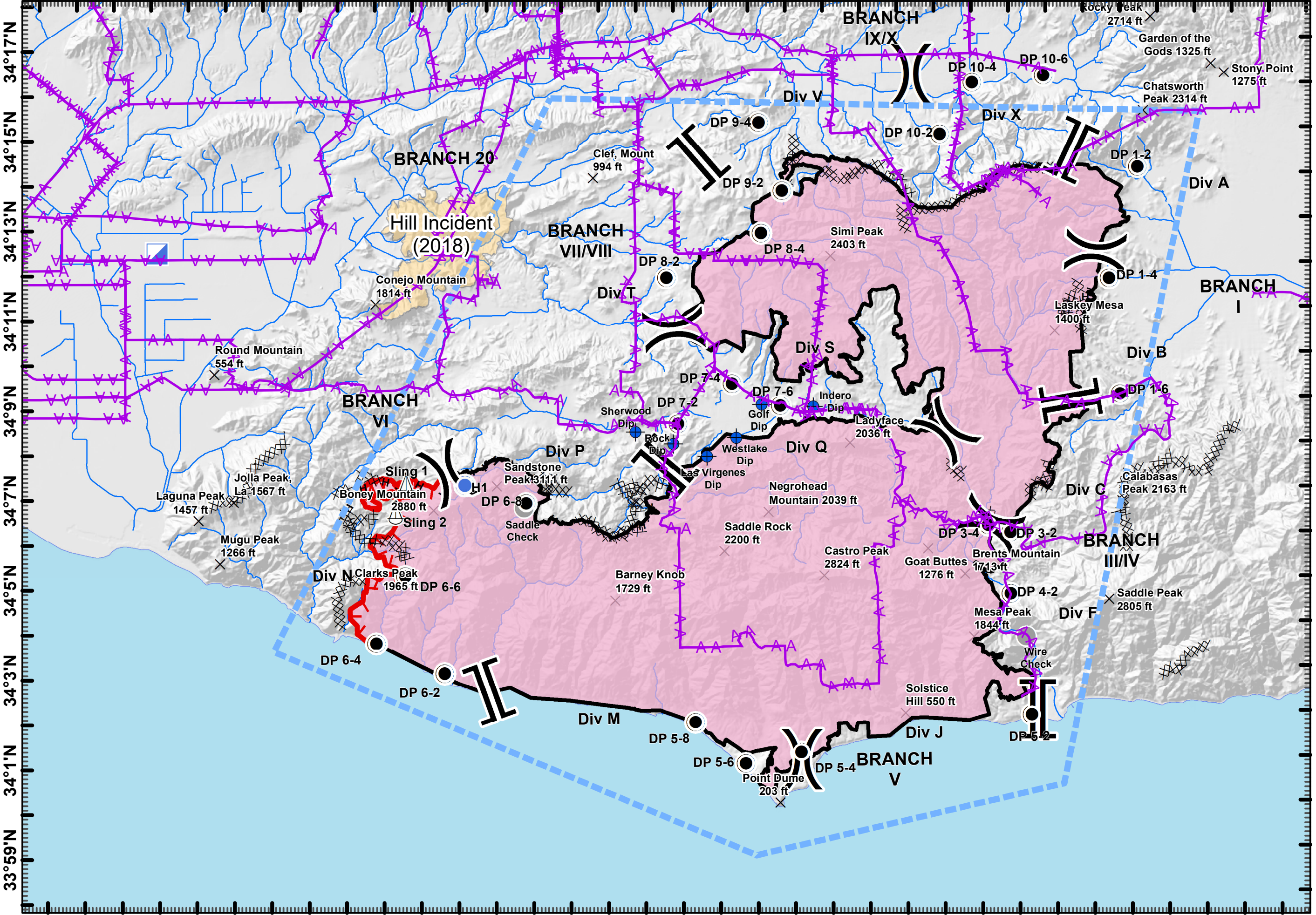


119°8'W 119°5'W 119°3'W 119°1'W 118°58'W 118°55'W 118°52'W 118°49'W 118°46'W 118°43'W 118°40'W 118°37'W 118°34'W



34°17'N 34°15'N 34°13'N 34°11'N 34°9'N 34°7'N 34°5'N 34°3'N 34°1'N 33°59'N



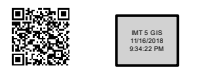
AIR OPERATIONS
Woolsey Incident
CA-VNC-91023
November 17, 2018
Legend

- Transmission Lines
- Temporary Flight Restriction
- Summits
- Branch Break
- Division Break
- Dip Site
- Drop Point
- Helispot
- ICP
- Sling Site
- Other
- H - Completed Hand Line
- Uncontrolled Fire Edge
- Completed Line
- Completed Dozer Line
- Woolsey Fire
- Hill Fire (2018)

TFR #FDC 8/7480
Issue Date: 20181115



1:145,000



DISCLAIMER: The displayed incident data is approximate and should only be used for informational purposes. The information contained in supporting base layers was generated from GIS data maintained by different sources and agencies and is not necessarily accurate to mapping, surveying, or engineering standards.

Point Type	Label	Latitude	Longitude
Branch Break		34° 8.968' N	118° 40.474' W
Branch Break		34° 2.114' N	118° 41.462' W
Branch Break		34° 2.657' N	118° 56.135' W
Branch Break		34° 7.642' N	118° 51.356' W
Branch Break		34° 14.494' N	118° 50.371' W
Branch Break		34° 14.552' N	118° 40.373' W
Dip Site	Indero Dip	34° 8.910' N	118° 47.360' W
Dip Site	Golf Dip	34° 8.967' N	118° 48.744' W
Dip Site	Westlake Dip	34° 8.238' N	118° 49.431' W
Dip Site	Las Virgenes Dip	34° 7.833' N	118° 50.218' W
Dip Site	Rock Dip	34° 8.117' N	118° 51.115' W
Dip Site	Sherwood Dip	34° 8.390' N	118° 52.130' W
Division Break		34° 6.269' N	118° 42.655' W
Division Break		34° 10.674' N	118° 51.076' W
Division Break		34° 12.284' N	118° 39.753' W
Division Break		34° 1.060' N	118° 47.780' W
Division Break		34° 6.873' N	118° 56.596' W
Division Break		34° 8.338' N	118° 43.835' W
Division Break		34° 16.300' N	118° 44.626' W
Drop Point	DP 1-4	34° 11.697' N	118° 39.396' W
Drop Point	DP 1-6	34° 9.115' N	118° 39.140' W
Drop Point	DP 3-2	34° 6.232' N	118° 42.719' W
Drop Point	DP 5-6	34° 0.988' N	118° 49.282' W
Drop Point	DP 7-6	34° 8.943' N	118° 48.246' W
Drop Point	DP 7-4	34° 9.448' N	118° 49.536' W
Drop Point	DP 8-2	34° 11.832' N	118° 51.256' W
Drop Point	DP 9-4	34° 15.255' N	118° 48.735' W
Drop Point	DP 10-4	34° 16.093' N	118° 42.999' W
Drop Point	DP 10-2	34° 14.953' N	118° 43.880' W
Drop Point	DP 10-6	34° 16.228' N	118° 41.088' W
Drop Point	DP 1-2	34° 14.168' N	118° 38.595' W
Drop Point	DP 3-4	34° 6.067' N	118° 42.125' W
Drop Point	DP 4-2	34° 4.698' N	118° 42.139' W
Drop Point	DP 5-2	34° 1.994' N	118° 41.618' W
Drop Point	DP 5-4	34° 1.222' N	118° 47.793' W
Drop Point	DP 5-8	34° 1.917' N	118° 50.617' W
Drop Point	DP 6-2	34° 3.063' N	118° 57.311' W
Drop Point	DP 9-2	34° 13.736' N	118° 48.135' W
Drop Point	DP 7-2	34° 8.564' N	118° 50.989' W
Drop Point	DP 6-4	34° 3.745' N	118° 59.132' W
Drop Point	DP 8-4	34° 12.790' N	118° 48.710' W
Drop Point	DP 6-6	34° 5.240' N	118° 58.339' W
Drop Point	DP 6-8	34° 6' 50.1048" N	118° 55' 4.9332" W
ICP		34° 12.476' N	119° 4.899' W
Other	Saddle Check	34° 6.730' N	118° 55.140' W
Other	Wire Check	34° 3.738' N	118° 41.740' W
Helispot	H-1	34° 7' 14.772" N	118° 56' 43.0224" W
Sling Site	Sling 1	34° 7' 16.7124" N	118° 58' 17.5296" W
Sling Site	Sling 2	34° 6' 39.8664" N	118° 58' 34.9428" W