

# Woolsey Incident

CA-VNC-91023

## Incident Action Plan

Operational Period

Nov 17<sup>th</sup> - Nov 18<sup>th</sup> 2018

0700 - 0700



BOX



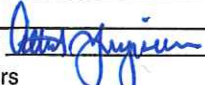
FTP







## ORGANIZATION ASSIGNMENT LIST (ICS 203)

<b>1. Incident Name:</b> Woolsey		<b>2. Operational Period: Date From:</b> 11/17/2018 <b>Date To:</b> 11/18/2018	
		<b>Time From:</b> 0700 <b>Time To:</b> 0700	
<b>3. Incident Commander(s) and Command Staff:</b>		<b>7. Operation Section:</b>	
IC/UC's	Parkes / Myers / Estrada	Operations	Olivarria (Spykerman VNC: Branch VI) / (Inman LAC: Branch I)
	Watkins / Richardson / Gage	Deputy Operations	Clinkenbeard / Shea (VNC) / Alkonis (LAC)
	Monday / Von Tillow / Murray		
Safety Officer	McNamara / Lawson (T) / Baligad	Night Ops	Bogan
Information Officer	Jeff Laruso		
Liaison Officer	Jones (T) / Davis / Jared / Lewis (T) / Garcia (T) / Haines / Shy (T) / Klar	Branch	I A.Ramirez(T)(12-hour)
<b>4. Agency/Organization Representatives:</b>		Division/Group	A/B/C/F S.Brewer
Agency/Organization	Name	Division/Group	J/M C.Wisman
NPS	Derrek Hartman	Division/Group	
CDCR	Lt. T. Eilers	Division/Group	
Fish & Game	JC Healy	Branch	VI F.Burris(12-hour)
Public Health	Mike Rogers / Pablo Valdez	Division/Group	N/P/Q K.Van Wig / J.Hidalgo(T)
LAFD	Corey Rose	Division/Group	S/T/N/X K.Mcdonald(12-hour) / J.Enneking (T)(12-hour)
VC Animal Control	Ryan Bay	Division/Group	
CAL OES	David Stone	Division/Group	
American Red Cross	Cary Vanaulsdall	Branch	
LA County CEO OEM	Anthony Araelian	Division/Group	Suppression Repair A.Frese
SCE Supervisor	Dan Face / Scott Brown	Division/Group	LA County Woolsey Support P.Errett / T.Aronson(T)
USFS	Michael Strawhun	Division/Group	
USFS	Dave Valencia	Branch	
LA Animal Control	Cesar Chavez	Division/Group	
CHP	Kevin Kurker	Division/Group	
CA State Parks	Jack Futoran	Division/Group	
CCC	Hector Garcia	Branch	
		Division/Group	
<b>5. Planning Section:</b>		Division/Group	
Chief	Anale Burlaw / Mitch Diehl	Branch	
Deputy	Sean Griffiths / Al Yanagisawa	Division/Group	
Resource Unit	Wood / McCarroll / Padilla	Division/Group	
Situation Unit	Jim Day / John Hamer	Division/Group	
Documentation Unit	Wally Collins	Branch	
Demobilization Unit	Arturo Mota / Greg Barnhart (t)	Division/Group	
GISS	Matt Turner / Ed Lamas	Division/Group	
FBAN	Troy Velin	Staging Area	
IMET	Rich Thompson	Division/Group	
Training Tech Spec	Cisneros / Soiza / McMillon / Segreto	Air Operations Branch	Director: O'Hara / Idol (T)
		Air Support Group Supervisor	Magana
		Air Tactical Group Supervisor	Haskins / McGough
		Helibase Manager	Matteoli
<b>6. Logistics Section</b>		<b>8. Finance/Administration Section:</b>	
Chief	Reynolds / Robbins / Takeshita	Chief	Jack Franklin
Deputy	Williams / Whitney	Time Unit	Suzi Cain
Supply Unit	Josh Randall	Procurement Unit	Andre Schmidt / James Lopez
Facilities Unit	Brian Pottenger	Comp/Claims Unit	Bud Sullins
Ground Support Unit	Tim Fitzgerald	Cost Unit	Patrick O'Dell
Communications Unit	Ken Parker		
Medical Unit	Josh Staley		
Ordering Unit	Mike Worford / Craig Zimmerman		
<b>Prepared By: Name:</b>	Griffis / Yanagisawa	PSC	Signature: 
<b>ICS 203</b>	Date/Time:	11/16/2018 2300 hours	NIMS IAP



# INCIDENT Weather Forecast



**FORECAST NO:** 8 **NAME OF FIRE:** Woolsey

**PREDICTION FOR:** 24 hour **SHIFT** **UNIT:** VNC/CalFire

**SHIFT DATE:** 11/17/18-11/18/18 (0700-0700) **SIGNED:**

Rich Thompson  
**Incident Meteorologist**

**TIME AND DATE**  
**FORECAST ISSUED:** 11/16/18 @ 1900

**WEATHER DISCUSSION:** Onshore flow will prevail across the incident through this evening. This will result in cooler afternoon temperatures, higher minimum relative humidity and some locally gusty onshore/upcanyon winds. For tonight, the onshore flow will begin to transition to a weak offshore flow pattern. However, the impacts of this weak offshore flow will be minimal across the fire tonight and early Sunday morning.

For Sunday through Tuesday, weak offshore flow is anticipated. There will be some north to northeast winds across the area, but wind speeds will be much weaker than previously experienced on the fire. However, the offshore flow will bring warmer temperatures and lower relative humidity. So, there is the potential for elevated fire weather conditions.

Further out, Wednesday through the weekend, the atmospheric pattern will shift to a wetter pattern. So, there will be the potential for some rain over the area. At this time, confidence in timing and amounts is low.

**WEATHER FORECAST:**

**WEATHER:** Low clouds and fog along the coast this morning and again tonight. Otherwise, mostly clear.

**TEMPERATURES:** Max: 66-72.  
Min: 44-52.

**HUMIDITY:** Min: 25-45%.  
Max: Below 1500 feet: 60-80%.  
Above 1500 feet: 40-60%.

**20 FT WINDS:**  
**RIDGETOP -** 0700-1100: Variable 4-8 MPH.  
1100-2000: Southwest to west 6-12 MPH Gust 18 MPH.  
2000-0700: Variable 4-8 MPH.

**SLOPE/VALLEY -** 0700-1100: Variable/upslope 4-8 MPH.  
1100-2000: Southwest/upcanyon 6-12 MPH Gust 22 MPH.  
2000-0700: Downslope/downvalley 2-5 MPH Gust 8 MPH.


**EXTENDED FORECAST:**

**Sunday-Tuesday:** Weak offshore flow is expected during this period. There will be some locally gusty north to northeast winds, but, at this time, winds are expected to be weak (definitely much weaker than previously experienced on the incident). However, the offshore flow will bring warmer temperatures and lower relative humidity. So, elevated fire weather conditions will be possible, especially Monday/Tuesday.

**Wednesday:** Partly to mostly cloudy conditions are anticipated. There will be the slight chance of some light rain developing across the area. Temperatures will be cooler and relative humidity will be higher.



# FIRE BEHAVIOR FORECAST

<b>FORECAST NUMBER:</b> 8	<b>TYPE OF FIRE:</b> Wildland Fire
<b>FIRE NAME:</b> Woolsey	<b>OPERATIONAL PERIOD:</b> 24hr 11/17 (0700-0700)
<b>DATE ISSUED:</b> 11/16	<b>TIME ISSUED:</b> 2100
<b>UNIT:</b> VNC/LAC	<b>SIGNED:</b> //Troy Velin// 

## INPUTS

### WEATHER SUMMARY

See attached Incident Weather Forecast in IAP

## OUTPUTS

### FIRE BEHAVIOR

#### GENERAL:

Fuels in the area consist of cured annual and coastal grasses and coastal chaparral and sage. Rains in early October did not have a lasting effect and fuels are critically dry. The Topography is steep, broken and drainages are predominantly arranged in alignment with critical winds.

Local Thresholds – Combinations of any of the following factors can greatly increase fire behavior in the Santa Monica Mountains.

- 20' Wind speeds over 30 MPH
- RH less than 20%
- Burning index above 77

#### Local Thresholds for Increased Fire Behavior

	Nov 17	Nov 18	Nov 19	Nov 20
20' Wind > 30 MPH	No	No	No	No
RH < 20%	Daytime	Marginal	No	No
BI > 77	No	No	No	No

Local Thresholds – Combinations that lead to fuel moisture recovery that decreases fire behavior in the Santa Monica Mountains.

- RH > than 60% for 6 hours or more for at least 2 days in a row.
- Eye level winds =/< 8 mph

#### Local Thresholds for Fuel Moisture Recovery (using Cheeseboro RAWs)

	Nov 17	Nov 18	Nov 19	Nov 20
MFW < 8 MPH (Day time)	Yes	Yes	Yes	Yes
RH > 60% for 6 hours	Yes	Yes	Yes	Yes
Projected 10 FM	7	10	8	8
Projected 100 FM	8	9	9	9

#### SPECIFIC:

**All Branches** – Interior hotspots will remain through the next several days, perimeter growth is not expected.

#### AIR OPERATIONS:

Generally clear. Decreasing off shore flow will allow smoke to return to the area.

#### SAFETY

Obtain weather and fire behavior forecasts and make them known  
Become familiar with local weather conditions that influence fire behavior



# Woolsey/Hill Incident Safety Message

November 17, 2018

Everyone is a Safety Officer



INCIDENT: Woolsey

DATE: 11-17-18

TIME: 0700- 0700

**MAJOR HAZARDS and RISKS: EXTREME FIRE BEHAVIOR – STEEP and ROCKY TERRAIN – NARROW ROADWAYS to FREEWAYS – BLOWING and ROLLING MATERIALS  
ALL PPE – ALL the TIME – On the FIRELINE – NO EXCEPTION!**

**FIRE ORDER of the DAY – POST LOOKOUTS WHEN THERE IS POSSIBLE DANGER**

**This fire has demonstrated RAPID RATES OF SPREAD. “Situational Awareness” at all Times.**

**Do Not become Complacent in your work assignments.**

**Identify Travel Routes in Division/Branches with Infrastructure Damage. As your position changes ensure you identify new safety zones and escape routes.**

**Perform your Risk Assessment BEFORE engaging and identify decision points for DISENGAGING. IRPG Page 1**

**Identify Safe work areas around Utility repairs. Identify Hazards of Repairs in Divisions/Branches.**

**Provide for frequent rest breaks and adequate hydration. Monitor yourself and those around you for heat related illnesses. DON'T LET THE TEMPERATURE FOOL YOU!**

**Drive with caution on narrow dusty roads and when in neighborhoods. Remember drive defensively!**

**Document all tailgate safety briefings on your 214's (to include subject matter) for each operational period**

**Watch Out Situation of the Day**



**6. INSTRUCTIONS AND ASSIGNMENTS NOT CLEAR**

**Escape Route/Safety Zone Checklist**

**Escape Routes:**

- \*More than one escape route
- \*Scouted – soils, vegetation, slope
- \*Timed – slowest person, fatigue, dozer speed
- \*Marked – flagged for day and night use

**Safety Zone:**

- \*Survivable without a shelter
- \*Natural – clean burn, water, bare soil/rock
- \*Manmade – constructed sites, roads
- \*Scouted for size and hazards
- \*Close enough considering escape time needed

**Remember and Follow:**

- \*The 10 Standard Fire Orders
- \*The 18 Situations That Shout Watch Out
- \*The Common Denominators of Fire Behavior on Tragedy Fires
- \*The Downhill Line Construction Guidelines



## INCIDENT SAFETY ANALYSIS

# WOOLSEY FIRE

DIV	HAZARDS	MITIGATIONS
All	<b>Fire Behavior</b>	<ul style="list-style-type: none"> <li>• LCES</li> <li>• Risk Assessment IRPG</li> </ul>
All	<b>Steep Terrain &amp; Rolling Debris</b>	<ul style="list-style-type: none"> <li>• Maintain 8’-10’ spacing when working &amp; walking.</li> <li>• Don’t work above any personnel</li> <li>• Be aware of travel times to Safety Zones</li> </ul>
All	<b>Fatigue Management</b>	<ul style="list-style-type: none"> <li>• Get adequate rest.....follow the 2:1 work/rest guidelines</li> <li>• Get proper hydration &amp; nourishment, take frequent breaks on fireline</li> </ul>
All	<b>Communication</b>	<ul style="list-style-type: none"> <li>• Use human repeaters when necessary</li> <li>• Review radio communication plan prior to committing resources</li> </ul>
All	<b>Driving &amp; Traffic</b>	<ul style="list-style-type: none"> <li>• Use <b>spotters</b> and <b>honk horn</b> when backing</li> <li>• Always use <b>headlights and seatbelts</b></li> <li>• Use chock blocks, emergency brakes, and turn wheels in high bank</li> <li>• Areas are being repopulated, expect residents to be on the roads</li> </ul>
All	<b>Infrastructure Repair</b>	<ul style="list-style-type: none"> <li>• Identify travel routes in Division/Branches during repairs</li> <li>• Identify hazards of repairs in Divisions/Branches</li> <li>• Identify damaged weak bridges</li> <li>• Maintain egress to safety zone</li> </ul>
All	<b>Utilities Repair</b>	<ul style="list-style-type: none"> <li>• Identify through Marking Safe Work areas around Utility Repairs</li> <li>• Identify Hazards of repairs in Divisions/Branches</li> <li>• Maintain egress to Safety Zone</li> </ul>
All	<b>Air Ops</b>	<ul style="list-style-type: none"> <li>• Communications</li> <li>• Leave area for VLATS when needed</li> <li>• ID Drop Areas</li> </ul>
All	<b>Power Lines</b>	<ul style="list-style-type: none"> <li>• Treat All Power Lines Down as “LIVE”</li> <li>• Mark areas with Caution Tape when possible</li> <li>• Notify Branch/Division of locations</li> </ul>
All	<b>Complacency</b>	<ul style="list-style-type: none"> <li>• Expect the unexpected</li> <li>• Monitor each other</li> </ul>
All	<b>Mechanized Equipment</b>	<ul style="list-style-type: none"> <li>• Create positive communication with operator, hand, radio, etc</li> <li>• Always work 100’ or greater from dozer, depending on vegetation height</li> <li>• Know Capability of Dozer</li> </ul>
All	<b>Structure Overhaul</b>	<ul style="list-style-type: none"> <li>• Wear appropriate PPE to include respiratory protection as needed</li> <li>• Wear eye protection when appropriate</li> </ul>
INCIDENT NAME <b style="color: red;">WOOLSEY FIRE</b>		DATE & TIME PREPARED 11/16/2018 1800
		OPERATIONAL PERIOD 11/17/2018 – 0700-0700

Prepared by Safety Officer: Dan McNamara SOF1, Jeremy Lawson SOF1 T, Richard Baligad SOFR







# ASSIGNMENT LIST (ICS 204)

CONTROLLED UNCLASSIFIED  
INFORMATION/BASIC

<b>1. Incident Name:</b> <p style="text-align: center;"><b>Woolsey</b></p>	<b>2. Operational Period:</b> Date From: 11/17/18      Date To: 11/18/18 Time From: 0700          Time To: 0700	<b>3.</b>  Branch: <b>I</b>  Div/Group: <b>J/M</b>  <p style="text-align: center;"><b>Juliet</b></p> <p style="text-align: center;"><b>Page 1 of 1</b></p>
<b>4. Operations Personnel:</b> <p style="text-align: center;"><b>Olivarria (Spykerman VNC: Branch VI) / (Inman LAC: Branch I)</b></p> Operations Section Chief: <b>Night Ops: Bogan</b> Branch Director: <b>A.Ramirez(T)(12-hour)</b> Division/Group Supervisor: <b>C.Wisman</b>		

5. Resources Assigned:	** Resources Below in Bold are 12 Hour **			Reporting Location, Special Equipment, Remarks, Notes, and Information	
Resource Identifier	Leader	Personnel	Request #	Time	Location
STA LAC 1102A	<b>Robertson, D.</b>	21	<b>E-21</b>	0700-1900	DP 5-6
T/F OES TX TF2-A	<b>Watson, Bob</b>	20	<b>E-729</b>	0700-1900	DP 5-6
T/F OES TX TF4-C	<b>Jones, Terry</b>	20	<b>E-731</b>	0700-1900	DP 5-6
T/F OES TX TF6-C	<b>Gibbon, Steven</b>	19	<b>E-736</b>	0700-1900	DP 5-6
STF LAC 1145F	Tolbert, Mark	16	E-231	0700-0700	DP 5-6
T/F OES TX TF8-F	<b>Woodward, Brandon</b>	20	<b>E-744</b>	0700-1900	DP 5-6
SOFR PRINS O-162	<b>Prins, Trenton</b>	1	<b>O-162</b>	0700-1900	DP 5-6
FEMP KAVANAUGH O-385	Kavanaugh, Tom	1	O-385	0700-0700	DP 5-6
FEMT GOLDIE O-375	Goldie, Nathan	1	O-375	0700-0700	DP 5-6

**6. Work Assignments:**  
 Hold fire within current control line.  
 Perform Tactical Patrol around structures.  
 Mop up 300' in from control line.  
 Maintain positive interaction with the public and assist as needed.

**7. Special Instructions:**

8. Communications							
Radio information needed for this assignment:							
Name	Ch	Function	Rx Freq	Rx Tone	Tx Freq	Tx Tone	Notes
LAC V4	2	COMMAND	152.5700N	151.4	157.8300N	151.4	LA CO V4
CDF T29	6	TACTICAL	151.3475N	192.8	151.3475N	192.8	
CDF T16	14	A/G TAC	159.2850N	192.8	159.2850N	192.8	AIR TO GROUND TAC
CALCORD	15	MEDICAL	156.0750N	156.7	156.0750N	156.7	MEDICAL COORDINATION
AIR GUARD	16	EMERGENCY	168.6250N		168.6250N	110.9	EMERGENCY - TONE 1

<b>9. Prepared by: Name:</b>	Wood / McCarroll / Padilla	Pos/Title: RESL	Signature:
<b>ICS 204</b>	Date/Time: 11/16/2018 2200	Personnel Count: 119	



















### AIR OPERATIONS SUMMARY ICS-220

<b>Incident Name / Number</b> Woolsey / CA-VNC-91023	<b>Sunrise</b> 631	<b>Startup</b> 701	<b>Cutoff</b> 1622	<b>Sunset</b> 1652	<b>Time Prepared</b> 1600 Shutdown 1722	<b>Date Prepared</b> Friday, November 16, 2018 Operational Period - Date Saturday November 17, 2018	<b>Prepared By</b> Sean O'Hara Operational Period - Time 0700-0700
<p><b>General Remarks, Safety Notes, Hazards, Air Operations Special Equipment, etc.</b>                  TRACK ALL DIPSITE LOCATIONS / NUMBER OF DIPS / GALLONS TAKEN.                  TRACK ALL DROP LOCATIONS / NUMBER OF DROPS / GALLONS DROPPED                  ALL GPS DATA TO BE COLLECTED IN DEGREES.MINUTES.DECIMAL MINUTES FORMAT.                  AVOID Aerial Application of Retardant / Foam / Agent within 300' of Waterways, Bodies of Water, etc.                  If Retardant / Foam / Agent is Dropped Within These Areas Immediately Notify the AOB and Provide the Following Information: Lat / Long, Estimated Number of Gallons and a Map Detailing The Area.</p> <p style="text-align: center;">Only Access Helibase from Fire Station Rd. Near Station 50 code 1501#                  Your Sunrise and Sunset info has not been updated for the current Op period</p>							

Frequencies	TX	Tone	RX	Tone	AM / FM	Update	Helibase Information		TFR Information		Rescue Ship Information		
							Name	Latitude	Longitude	Request #	Radius	Altitude	Centerpoint
Command	see comm plan		see comm plan	186.2000	FM		Sean O'Hara						
A/G CMD CDF T18	159.3450	192.8	159.3450	192.8	FM		Gerry Magana						
A/G TAG CDF T16	159.2850	192.8	159.2850	192.8	FM		Niko Matteoli						
Rotor Victor/TFR	118.5750		118.5750		AM								
AIR TACTICS	189.1500		189.1500		FM								
Air/Air Briefing	125.1250		125.1250		AM		John Zuniga						
TOLC	123.0250		123.0250		AM		Jim Gonzalez						
DECK	163.1000		163.1000		FM								
CALCORD - MEDICAL	156.0750	156.7	156.0750	156.7	FM								
AIRGUARD - Emergency Only	168.6250	110.9	168.6250		FM								

#### HELICOPTERS ( Use page 2 if Needed )


FAA #	Type	Make/Model	Helibase	Avail	Start	Remarks	FAA #	Type	Make/Model	Helibase	Avail	Start	Remarks
286	I	UH-60	Camarillo	0730	0630	Bucket, A-255							
30H	I	CH47	Camarillo	0730	0630	Bucket, A-91							
	Type												
528	II	Bell 212HP	Camarillo	0730	0630	Tank, A-132							
530	II	Bell 205++	Camarillo	0730	0630	Tank, A-124							
VNC6	II	Bell 205++	Camarillo	0730	0630	Tank, NVG, ALS Hoist, A-259							
	Type												
407GH	III	Bell 407	Camarillo	0730	0630	HICO, Recon, A-72							
535	III	Bell 407	Camarillo	0730	0630	HICO, Recon, A-138							
2BH	III	206L	Camarillo	0730	0630	HICO, Recon, A-252							

#### FIXED WING ( Use Page 2 if Needed )

FAA #	Type	Make/Model	Base	Avail	Start	Remarks	FAA #	Type	Make/Model	Base	Avail	Start	Remarks



# ICS 205 - INCIDENT RADIO COMMUNICATIONS PLAN

1. Incident Name:		2. Date/Time Prepared		3. Operational Period:				
Woolsey Incident Channels		Date: 11/16/2018 Time: 1930	Date From: 11/17/18 Time From: 0700	Date To: 11/18/18 Time To: 0700				
4. Communications								
Ch#	Function	Name	Assigned To	Rx Freq	Rx Tone	Tx Freq	Tx Tone	Notes
1	COMMAND	VNC C8	BRANCH VI	155.9850N	186.2	154.7250N	186.2	VENTURA CO CMD 8
2	COMMAND	LAC V4	BRANCH I	152.5700N	151.4	157.8300N	151.4	LA CO V4
3	TACTICAL	CDF T26	DIV A/B/C/F	159.2925N	192.8	159.2925N	192.8	
4	TACTICAL	CDF T27	UNASSIGNED	159.3075N	192.8	159.3075N	192.8	
5	TACTICAL	CDF T28	WOOLSEY SUPPORT	151.1825N	192.8	151.1825N	192.8	
6	TACTICAL	CDF T29	DIV J/M	151.3475N	192.8	151.3475N	192.8	
7	TACTICAL	CDF T30	DIV N/P/Q	151.3925N	192.8	151.3925N	192.8	
8	TACTICAL	CDF T31	DIV S/T/V/X	159.3825N	192.8	159.3825N	192.8	
9	TACTICAL	CDF T32	UNASSIGNED	151.2425N	192.8	151.2425N	192.8	
10	TACTICAL	CDF T34	UNASSIGNED	151.4675N	192.8	151.4675N	192.8	
11	TACTICAL	CDF T35	UNASSIGNED	159.3225N	192.8	159.3225N	192.8	
12	TACTICAL	VFIRE 23	SUPPRESSION	154.2950N	156.7	154.2950N	156.7	
13	A/G CMD	CDF T18	ALL DIVS	159.3450N	192.8	159.3450N	192.8	AIR TO GROUND CMD
14	A/G TAC	CDF T16	ALL DIVS	159.2850N	192.8	159.2850N	192.8	AIR TO GROUND TAC
15	MEDICAL	CALCORD	ALL DIVS	156.0750N	156.7	156.0750N	156.7	MEDICAL COORDINATION
16	EMERGENCY	AIR GUARD	ALL DIVS	168.6250N		168.6250N	110.9	EMERGENCY - TONE 1
17								
18								
19								
20	EMERGENCY	AIR GUARD	ALL DIVS	168.6250N		168.6250N	110.9	EMERGENCY - TONE 1
5. Special Instructions								
All frequencies are ANALOG/NARROWBAND Comm Unit Phone 805-384-2339								
6. Prepared by (Communications Unit Leader): Name: Ken Parker				Signature: 				
ICS 205 - CONTROLLED UNCLASSIFIED INFORMATION/BASIC				Date/Time: 11/16/18 1930				

<b>MEDICAL PLAN ICS 206</b>	1. INCIDENT NAME	2. DATE PREPARED	3. TIME PREPARED	4. OPERATIONAL PERIOD
	<b>WOOLSEY INCIDENT</b>	11/16/2018	1700	11/17-11/18, 0700-0700

**5. INCIDENT MEDICAL AID STATIONS**

MEDICAL AID STATIONS	LOCATION	PARAMEDICS	
		YES	NO
MERT	CDC SLEEPING AREA	RN	
MOUNTAIN MEDICS	NEAR MKU	RN	

**6. TRANSPORTATION**

**A. AMBULANCE SERVICES**

NAME	LOCATION	PHONE	PARAMEDICS	
			YES	NO
AMR	VENTURA COUNTY	COMMUNICATIONS	X	

**B. AIR AMBULANCES**

NAME	LOCATION	PARAMEDICS	
		YES	NO
VENTURA COPTER 6 (HOIST)	CAMARILLO AIRPORT	ALS	

**7. HOSPITALS**

NAME	ADDRESS	TRAVEL TIME		PHONE	HELIPAD		BURN CENTER	
		AIR	GRND		YES	NO	YES	NO
Los Robles Regional TRAUMA LEVEL 2	215 W Janss Rd, Thousand Oaks 34° 12.477'N, 118° 52.960'W	5 min	15 min	(805) 370-5901	X			X
Ventura County Med TRAUMA LEVEL 2	300 Hillmont Ave, Ventura 34° 16.635'N, 119° 15.211'W	10 min	20 min	(805) 652-6165	X			X
West Hills Hospital TRAUMA LEVEL 2	7300 Medical Center Dr., West Hills 34° 12.186'N, 118° 37.711'W	15 min	40 min	(818) 676-4999	X		X	
UCLA Medical Center TRAUMA LEVEL 1	757 Westwood Plaza Los Angeles 34° 04.00'N, 118° 26.77'W	20 min	60 min	(310) 208-5387	X			X

**8. MEDICAL EMERGENCY PROCEDURES**

**EMERGENCY FREQUENCY:**  
**"LINE EMERGENCY"**  
 Crew Supervisor will contact Division Supervisor with patient complaint/condition and location.

- Division/Group Supervisor contacts:
  1. Closest EMS resource
  2. Communications Unit
- Communications Unit contacts:
  1. Ground or Air ambulance as requested
  2. Operations
  3. Safety
  4. Medical Unit
- Division Supervisor or designee will serve as point of contact and run medical emergency on assigned channel.
  1. A pre-assigned tactical frequency CALCORD should be used for IWI and only for duration of need.
- Communications Unit will clear command channel for emergency traffic as needed and only for duration of need.

**CAMP EMERGENCY:**  
 Contact Medical Unit with patient complaint/condition and location. Medical Staff will respond to stabilize incident:

- Medical Unit contacts:
 

1. Communications	4. Operations
2. Safety	5. Crew Supervisor
3. Logistics	6. Comps/Claims

**INJURY REPORTING PROCEDURES**

**CHIEF COMPLAINT** \_\_\_\_\_  
**LOCATION OF PATIENT** \_\_\_\_\_  
**POINT OF CONTACT** \_\_\_\_\_  
**TRANSPORTATION REQUESTED BY: AIR \_\_\_ GROUND \_\_\_**  
**POINT OF PICKUP** \_\_\_\_\_  
**LAT** \_\_\_\_\_ **LONG** \_\_\_\_\_  
**PATIENT UNIT ID** \_\_\_\_\_  
**IS AN EMT/P WITH PATIENT: YES \_\_\_ NO \_\_\_**  
**AGE** \_\_\_\_\_  
**SEX: MALE \_\_\_ FEMALE \_\_\_**

**ALL EMERGENCIES---Secure the area  
 and identify witnesses for later investigation.  
 Keep an accurate log of events.**

**\*\*IN CAMP EMERGENCIES\*\***  
**805-384-2339**

<b>ICS 206</b>	9. PREPARED BY: (Medical Unit Leader) <b>JOSIAH STALEY (SJS)</b>	10. REVIEWED BY: (Safety Officer) <b>DAN MCNAMARA (SRM)</b>
----------------	---	--



# WOOLSEY FIRE

CA-VNC-091023

## FINANCE MESSAGE

### *Finance / Admin Section*

- Finance Section is located on trailer row
  - Please come by the Time Unit and start your and update your FC-33
  - Vendors please drop off your agreements to the Time Unit
  - Shift Tickets need to be completed by line supervisor, and turned in at the end of each shift
  - All injuries need to be reported to the COMP / CLAIMS Unit
  - All property Damage must be reported and documented
  - Please report any Vehicle Damage, this includes Rental Vehicles
  - Local Government please check in with OES
  - Federal Time: Timekeeper on site.
  - **OFF-SITE FEEDING IS NOT APPROVED**
  - Water usage report needs to be turned in daily to the COMP / CLAIMS Unit
- 
- ***This fire is a under cost apportionment***  
**ALL DIVS, OPBD, STAM NEED TO DEBRIEF WITH THE COST APPORTIONMENT TEAM DAILY.**  
Cost apportionment is located on trailer row.

## **INCIDENT BILLING INFORMATION**

### **CAL FIRE – SAN LUIS OBISPO UNIT**

635 N. Santa Rosa

Index Code: 3013

E-fund Billing Code: 013815







# PUBLIC INFORMATION SECTION



Incident Information Line: (805) 465-6650  
Incident Media Line: (805) 669-6015

Email Updates (sign up):  
[www.tinyurl.com/2018woolsey](http://www.tinyurl.com/2018woolsey)

STATUS	
Incident Start Date: 11/08/2018	Incident Start Time: 2:30 PM
Cause: Under Investigation	Acres:
Containment:	Total Personnel:

**MEDIA** – The California State Penal Code Section 409.5(d) allows the news media to enter scenes of disaster, riot or civil disturbance. Properly identified members of the news media should not be restricted from entering locations specified within the code. However, this does not include crime scenes, private property and does not imply that the news media may interfere with incident operations while they are in the areas of concern. More information can be found [here](#).



**CAL FIRE SOCIAL MEDIA POLICY** – When assigned to a CAL FIRE incident, you will adhere to the CAL FIRE Social Media Policy, Section 0691. You can find further information about the CAL FIRE Social Media Policy [here](#).



**PHOTOGRAPHS AND VIDEOS OF INCIDENT** – We are in a new era of media. Media no longer means news/broadcast industry, but now refers to anyone that has the capability to shoot video, photographs and post them onto social media sites in a matter of minutes. Unfortunately, we have seen some instances of photographs or videos that have depicted unsafe, unprofessional or embarrassing circumstances which are a serious breach of ethics. When this happens, it reflects poorly on all that are attached to this incident. Posting an inappropriate video, photo or blog comment could expose oneself to unwanted ramifications. It may be unsafe to shoot photos or video and a firefighter who is concentrating on a camera loses their situational awareness.

The Public Information Office would like copies of the video and pictures that you safely took while not in an emergency situation, fire suppression activity or in an overhead assignment. Bring your video and pictures to the Public Information trailer; they will be reviewed and possibly uploaded to our many CAL FIRE social media sites. Remember, we don't want photographs or videos that depict unsafe, unprofessional or embarrassing circumstances, which are a serious breach of ethics.

**LOST AND FOUND** – The Information Section will manage lost and found items for the incident. If you have lost an item please leave your contact information and what you have lost at the Information Section. If you have found an item on the incident, bring the item to the Information Section with your contact information as well. All items left in Lost and Found will be turned over to the local CAL FIRE San Luis Obispo Unit.

**MAIL SERVICE** – The Information Section will assist you in getting items mailed from the incident as well as receiving items, the address is: 480 Skyway Dr Camarillo, CA 93010

## ***TRAINING SPECIALIST MESSAGE***

**Deadline Sunday 11/18 @1000**

**Trainees, all open training assignments on the Incident must be closed with the TNSP**

**In order to receive documented credit for your training assignment – you must close out with the Training Specialist before you Demob**

### **Bring the following to the exit interview**

- **A completed and signed ICS 225 Performance Evaluation**
  - **A completed evaluation record**
- **Position task book with dates and signatures for this incident**

***Forms are available at the Training Office***

**Cory Cisneros 909.644.6379**

**Claudia Soiza 949.632.7813**

**John Garber 909.499.6863**

**Joe Segreto 714.904.5169**





## PEER SUPPORT

---

*As the incident is winding down, take time to pause and give yourself a chance make sure that you, your coworkers and loved ones are taken care of. We are all risk agencies responding to a multitude of critical incidents. As we all move ahead, be sure to utilize the resources available to you from your agency. Additional information can be found in the QR code below.*

*Continue to take care of yourself and each other.*

*Your Peer Team*

---



<http://bit.do/fdpeer>





**Facilities Map**  
**Woolsey Incident**  
 CA-VNC-91023  
 November 18, 2018

Route to Supply  
& Fuel



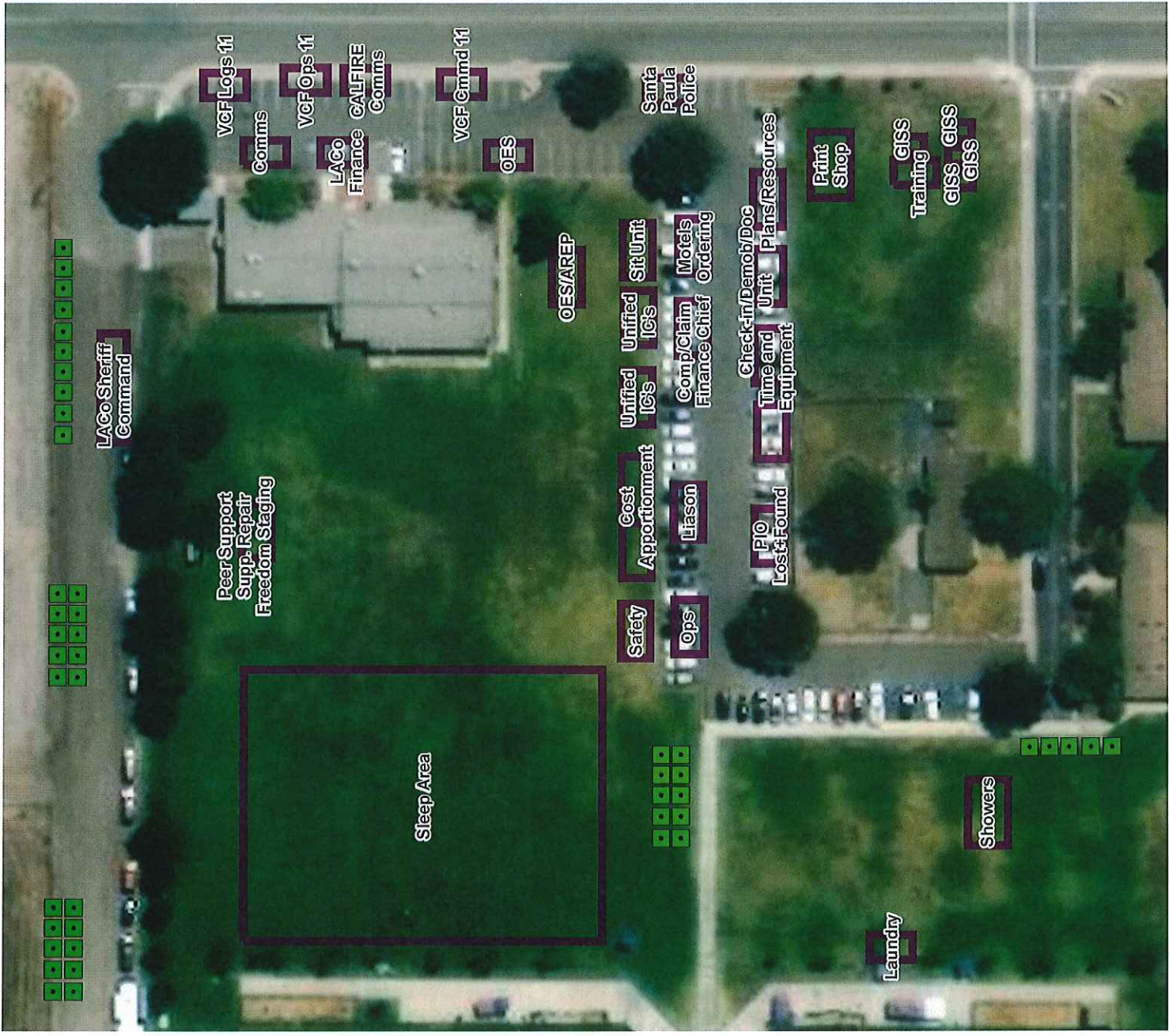
INCIDENT COMMAND POST 1:8,800

ROUTE TO SUPPLY/FUEL

ROUTE DESTINATIONS

BATHROOM

UNIT



1:1,000





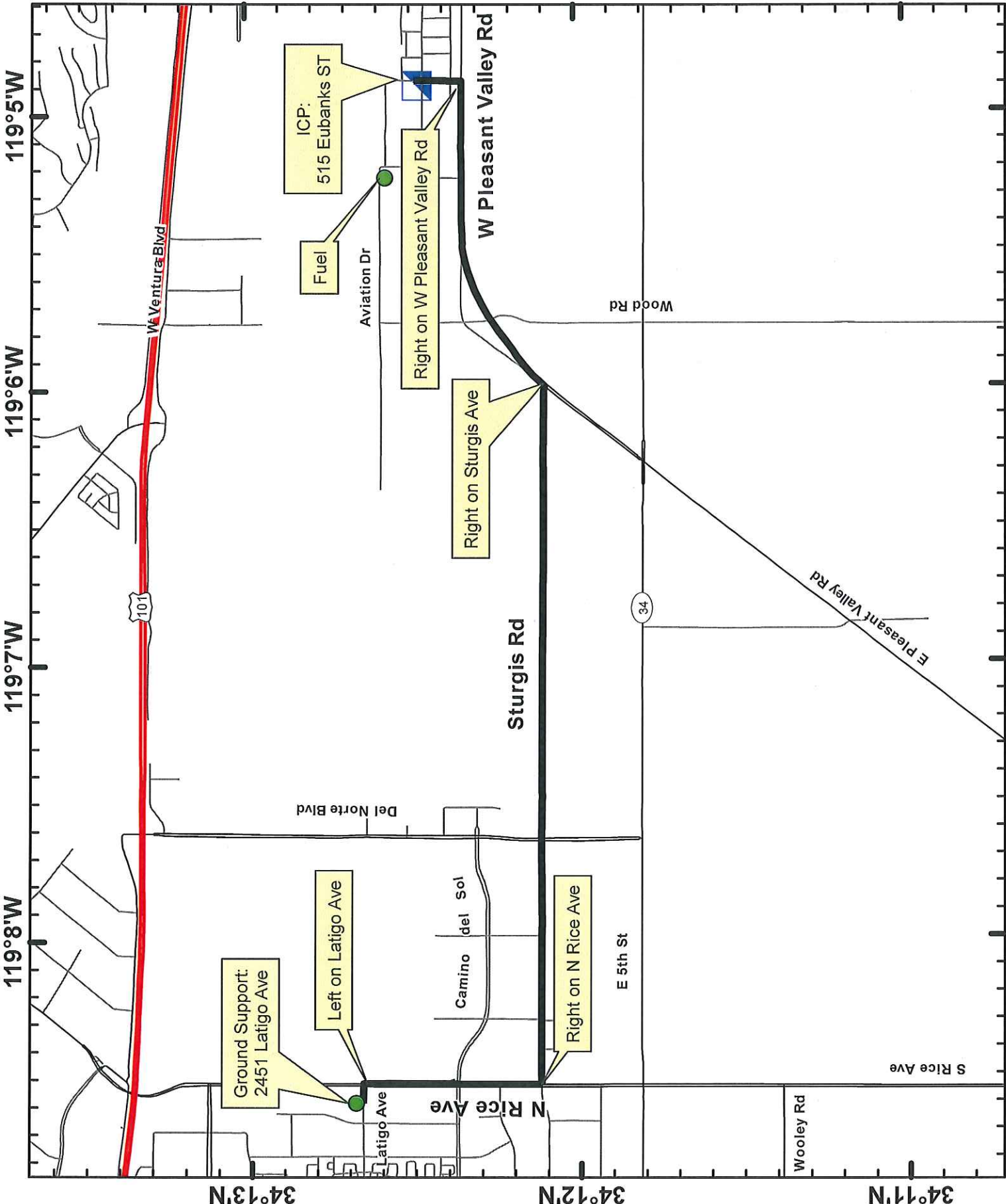
**GROUND SUPPORT**  
 Woodsey Incident  
 CA-VNC-91023  
 November 18, 2018

- Legend**
- Route
  - Major Highways
  - Major Roads
  - Local Streets
  - ICP



Miles  
 0 0.1 0.2  
**1:28,000**

**DISCLAIMER:**  
 The displayed incident data is approximate and for informational purposes only. The information contained in this report was generated from



119°9'W 119°3'W 118°59'W 118°55'W 118°51'W 118°47'W 118°43'W 118°39'W 118°35'W

**TRANSPORTATION**  
 Woolsey Incident  
 CA-VNC-91023  
 November 18, 2018

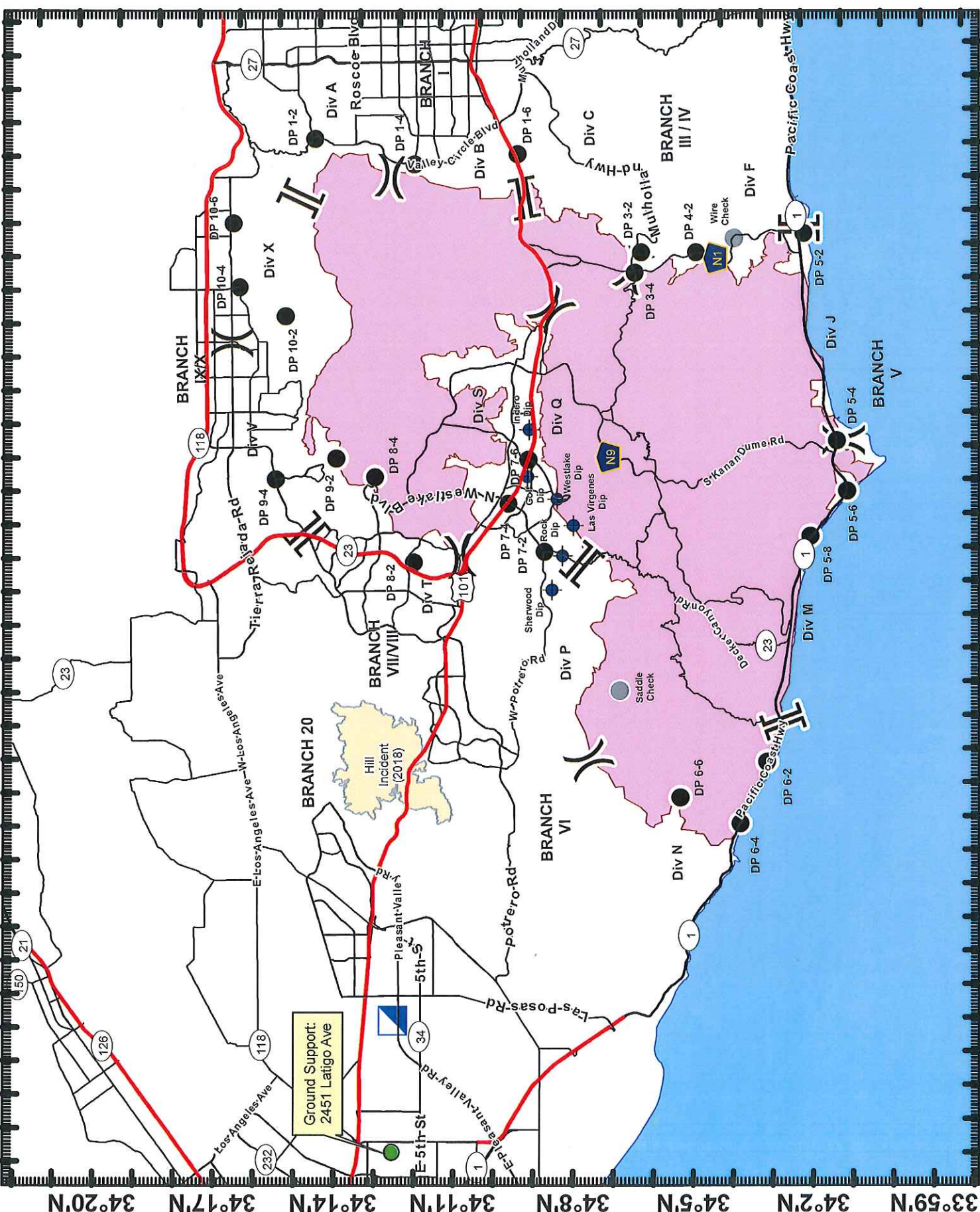
**Legend**

- Major Highways
- Highways
- Major Roads
- Hill Fire
- Fire Perimeter
- Dip Site
- Drop Point
- ICP
- Other
- Division Break
- Branch Break

Meters  
 0 0.5 1 2

**1:230,000**

DISCLAIMER:  
 The display information is approximate for reference purposes. The information contained in supporting data layers was generated from



Ground Support:  
 2451 Latigo Ave





