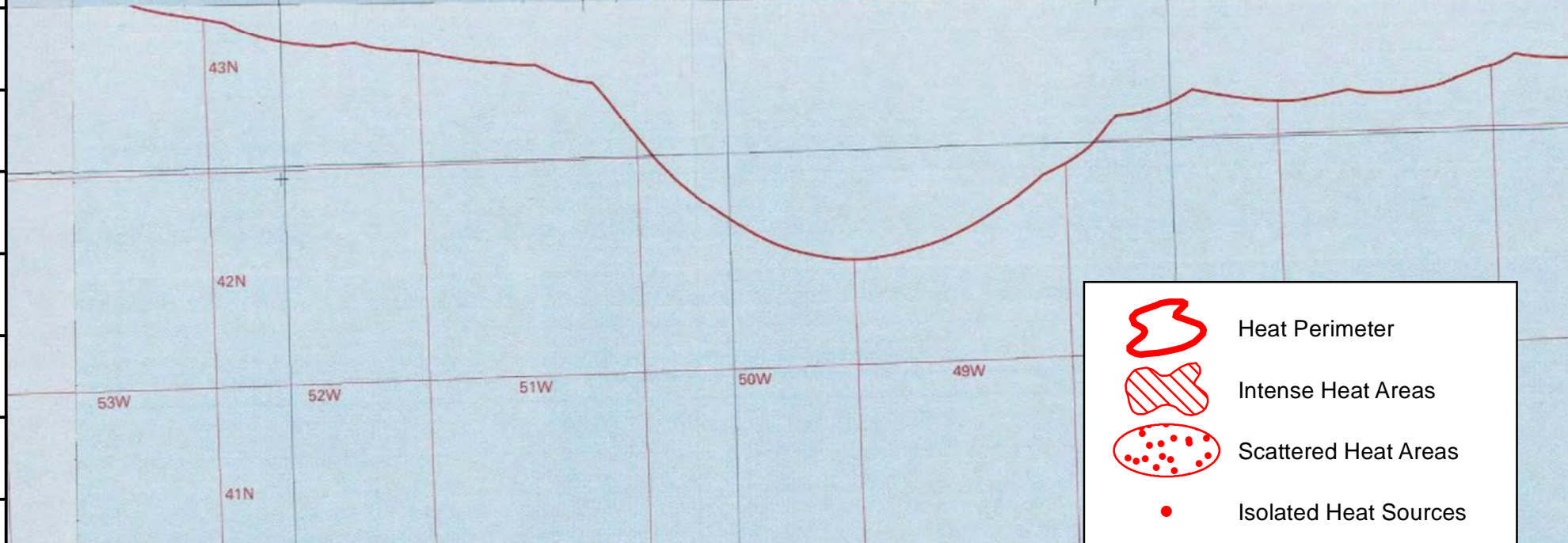
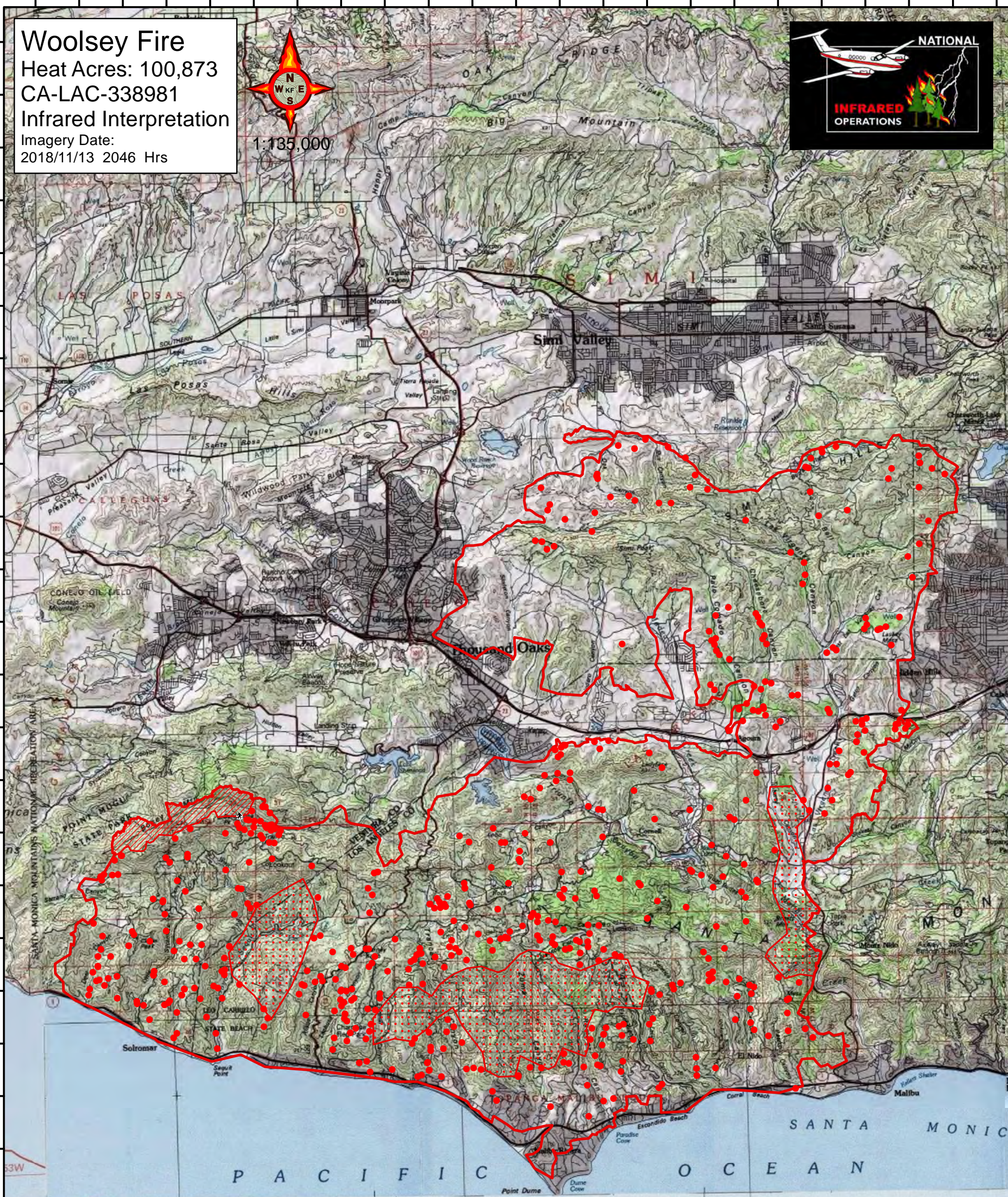


119°0'W 118°59'W 118°58'W 118°57'W 118°56'W 118°55'W 118°54'W 118°53'W 118°52'W 118°51'W 118°50'W 118°49'W 118°48'W 118°47'W 118°46'W 118°45'W 118°44'W 118°43'W 118°42'W 118°41'W 118°40'W 118°39'W 118°38'W

Woolsey Fire
Heat Acres: 100,873
CA-LAC-338981
Infrared Interpretation
Imagery Date:
2018/11/13 2046 Hrs







1:135,000



IRIN: Kyle Felker
Map produced:
11/13/2018 2154 hrs

0 7,000 14,000 28,000 Feet

-  Heat Perimeter
-  Intense Heat Areas
-  Scattered Heat Areas
-  Isolated Heat Sources

NAD 1983 California Teale Albers

Copyright © 2013 National Geographic Society, i-cubed

119°1'W 119°0'W 118°59'W 118°58'W 118°57'W 118°56'W 118°55'W 118°54'W 118°53'W 118°52'W 118°51'W 118°50'W 118°49'W 118°48'W 118°47'W 118°46'W 118°45'W 118°44'W 118°43'W 118°42'W 118°41'W 118°40'W 118°39'W