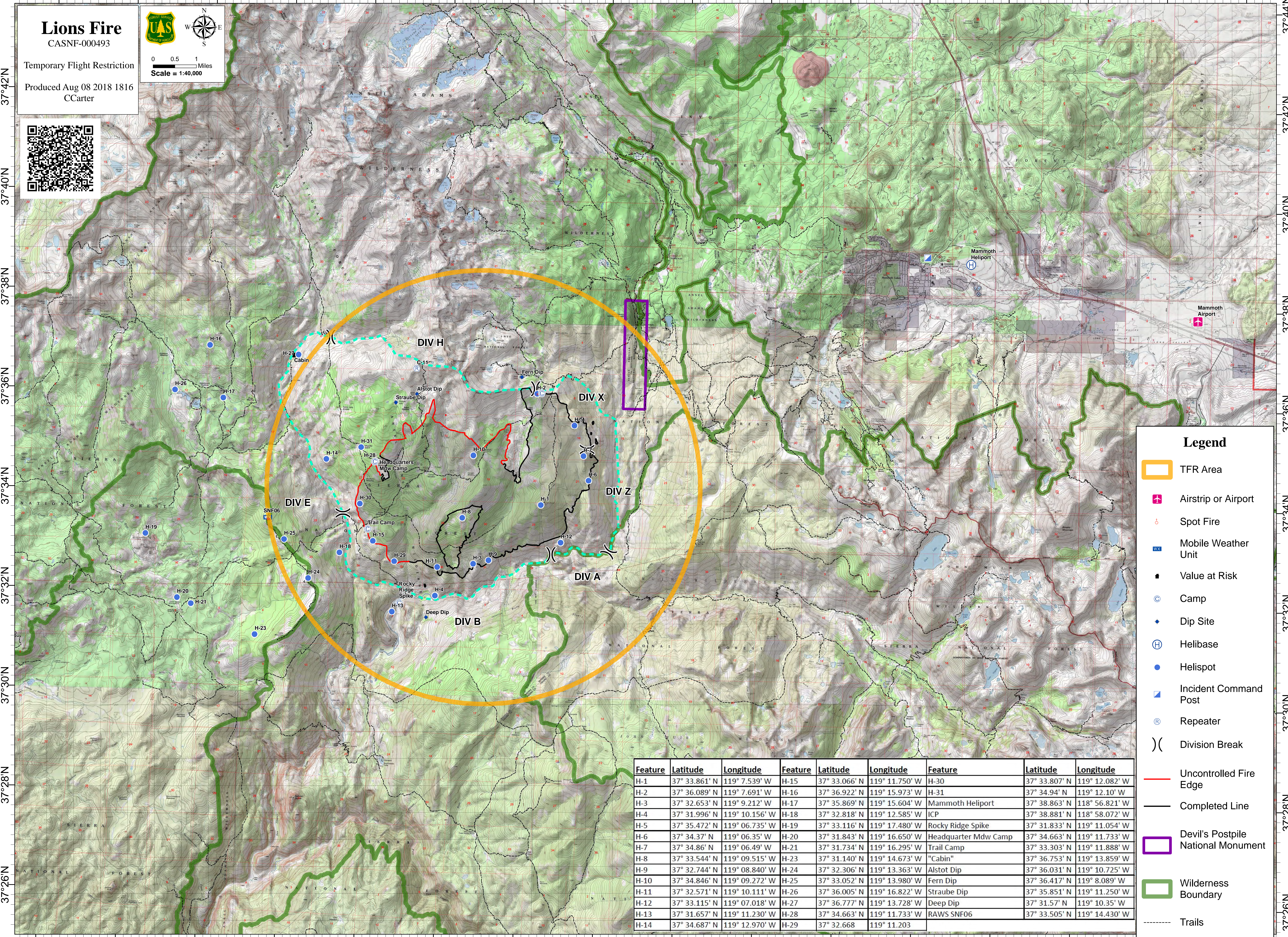
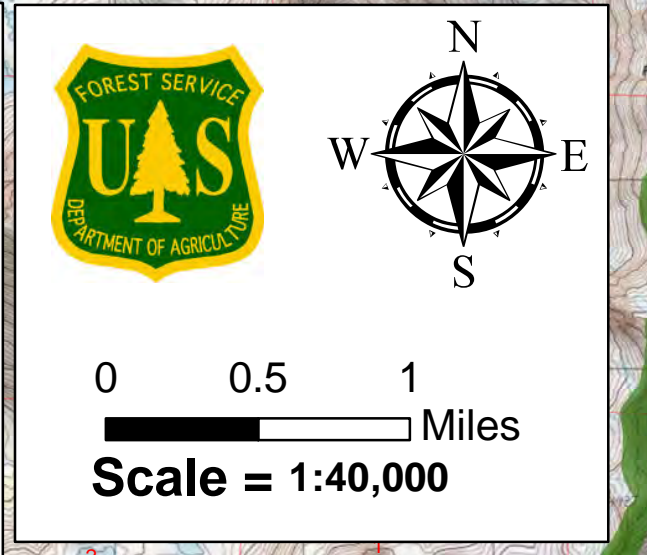


119°20'W 119°18'W 119°16'W 119°14'W 119°12'W 119°10'W 119°8'W 119°6'W 119°4'W 119°2'W 119°0'W 118°58'W 118°56'W 118°54'W 118°52'W 118°50'W

**Lions Fire**  
CASNF-000493  
Temporary Flight Restriction  
Produced Aug 08 2018 1816  
CCarter



**Legend**

- TFR Area
- Airstrip or Airport
- Spot Fire
- Mobile Weather Unit
- Value at Risk
- Camp
- Dip Site
- Helibase
- Helispot
- Incident Command Post
- Repeater
- Division Break
- Uncontrolled Fire Edge
- Completed Line
- Devil's Postpile National Monument
- Wilderness Boundary
- Trails

Feature	Latitude	Longitude	Feature	Latitude	Longitude	Feature	Latitude	Longitude
H-1	37° 33.861' N	119° 7.539' W	H-15	37° 33.066' N	119° 11.750' W	H-30	37° 33.807' N	119° 12.082' W
H-2	37° 36.089' N	119° 7.691' W	H-16	37° 36.922' N	119° 15.973' W	H-31	37° 34.94' N	119° 12.10' W
H-3	37° 32.653' N	119° 9.212' W	H-17	37° 35.869' N	119° 15.604' W	Mammoth Heliport	37° 38.863' N	118° 56.821' W
H-4	37° 31.996' N	119° 10.156' W	H-18	37° 32.818' N	119° 12.585' W	ICP	37° 38.881' N	118° 58.072' W
H-5	37° 35.472' N	119° 06.735' W	H-19	37° 33.116' N	119° 17.480' W	Rocky Ridge Spike	37° 31.833' N	119° 11.054' W
H-6	37° 34.37' N	119° 06.35' W	H-20	37° 31.843' N	119° 16.650' W	Headquarter Mdw Camp	37° 34.663' N	119° 11.733' W
H-7	37° 34.86' N	119° 06.49' W	H-21	37° 31.734' N	119° 16.295' W	Trail Camp	37° 33.303' N	119° 11.888' W
H-8	37° 33.544' N	119° 09.515' W	H-22	37° 31.140' N	119° 14.673' W	"Cabin"	37° 36.753' N	119° 13.859' W
H-9	37° 32.744' N	119° 08.840' W	H-23	37° 32.306' N	119° 13.363' W	Alstot Dip	37° 36.031' N	119° 10.725' W
H-10	37° 34.846' N	119° 09.272' W	H-24	37° 33.052' N	119° 13.980' W	Fern Dip	37° 36.417' N	119° 8.089' W
H-11	37° 32.571' N	119° 10.111' W	H-25	37° 36.005' N	119° 16.822' W	Straube Dip	37° 35.851' N	119° 11.250' W
H-12	37° 33.115' N	119° 07.018' W	H-26	37° 36.777' N	119° 13.728' W	Deep Dip	37° 31.57' N	119° 10.35' W
H-13	37° 31.657' N	119° 11.230' W	H-27	37° 31.657' N	119° 11.230' W	RAWS SNF06	37° 33.505' N	119° 14.430' W
H-14	37° 34.687' N	119° 12.970' W	H-28	37° 32.668	119° 11.203			
			H-29	37° 32.668	119° 11.203			

119°20'W 119°18'W 119°16'W 119°14'W 119°12'W 119°10'W 119°8'W 119°6'W 119°4'W 119°2'W 119°0'W 118°58'W 118°56'W 118°54'W 118°52'W 118°50'W

37°44'N  
37°42'N  
37°40'N  
37°38'N  
37°36'N  
37°34'N  
37°32'N  
37°30'N  
37°28'N  
37°26'N

37°44'N  
37°42'N  
37°40'N  
37°38'N  
37°36'N  
37°34'N  
37°32'N  
37°30'N  
37°28'N  
37°26'N