

Lions Fire
CASNF-000493
11,606 acres

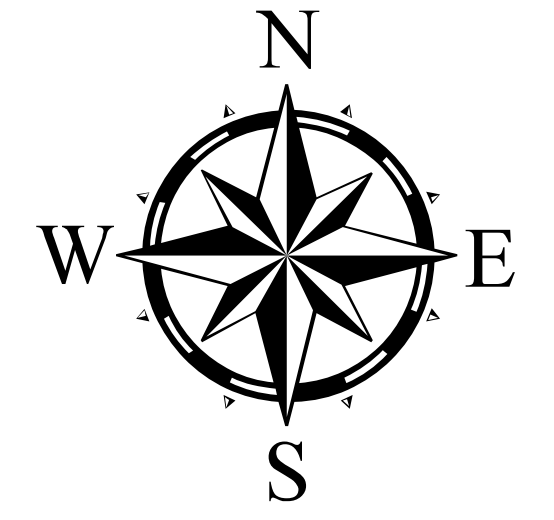
OPERATIONS MAP
August 21, 2018

Produced Aug 20 2018 1705
CCarter

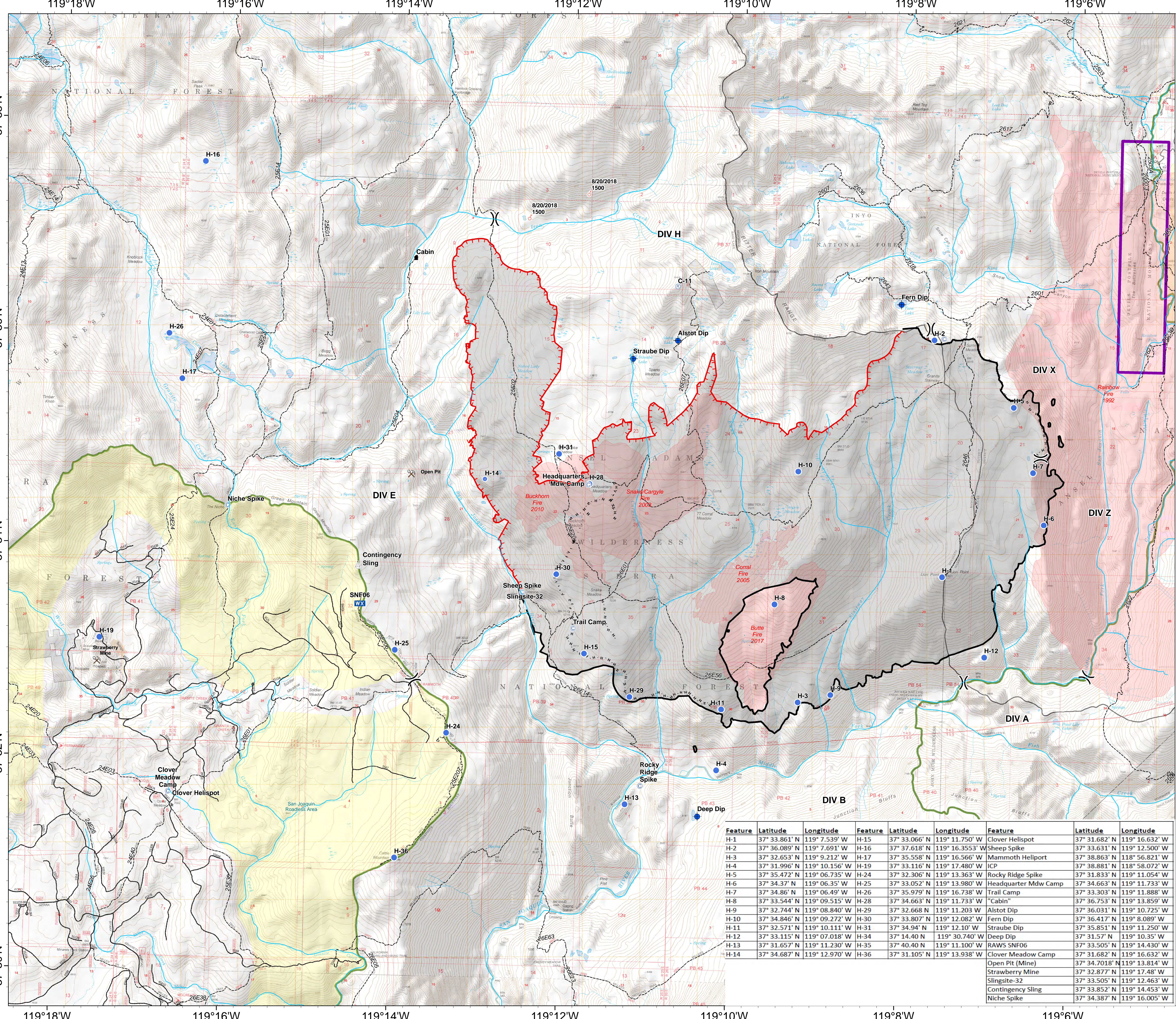


- Lions Fire Perimeter
- Uncontrolled Fire Edge
- Completed Line
- Completed Hand Line
- Camp
- Unimproved Landing Area
- Sling Site
- Spot Fire
- Mobile Weather Unit
- Value at Risk
- Repeater
- Dip Site
- Helispot
- Division Break
- Trails
- Fire History
- Roadless Area
- Devil's Postpile National Monument
- Wilderness Area

Mines



0 0.5 1 Miles
Scale = 1:20,000



Feature	Latitude	Longitude	Feature	Latitude	Longitude	Feature	Latitude	Longitude
H-1	37° 33.861' N	119° 7.539' W	H-15	37° 33.066' N	119° 11.750' W	Clover Helispot	37° 31.682' N	119° 16.632' W
H-2	37° 36.089' N	119° 7.691' W	H-16	37° 37.618' N	119° 16.353' W	Sheep Spike	37° 33.631' N	119° 12.500' W
H-3	37° 32.653' N	119° 9.212' W	H-17	37° 35.558' N	119° 16.566' W	Mammoth Heliport	37° 38.863' N	118° 56.821' W
H-4	37° 31.996' N	119° 10.156' W	H-19	37° 33.116' N	119° 17.480' W	ICP	37° 38.881' N	118° 58.072' W
H-5	37° 35.472' N	119° 06.735' W	H-24	37° 32.306' N	119° 13.363' W	Rocky Ridge Spike	37° 31.833' N	119° 11.054' W
H-6	37° 34.37' N	119° 06.35' W	H-25	37° 33.052' N	119° 13.980' W	Headquarter Mdw Camp	37° 34.663' N	119° 11.733' W
H-7	37° 34.86' N	119° 06.49' W	H-26	37° 35.979' N	119° 16.738' W	Trail Camp	37° 33.303' N	119° 11.888' W
H-8	37° 33.544' N	119° 09.515' W	H-28	37° 34.663' N	119° 11.733' W	"Cabin"	37° 36.753' N	119° 13.859' W
H-9	37° 32.744' N	119° 08.840' W	H-29	37° 32.668' N	119° 11.203' W	Alstot Dip	37° 36.031' N	119° 10.725' W
H-10	37° 34.846' N	119° 09.272' W	H-30	37° 33.807' N	119° 12.082' W	Fern Dip	37° 36.417' N	119° 8.089' W
H-11	37° 32.571' N	119° 10.111' W	H-31	37° 34.94' N	119° 12.10' W	Straube Dip	37° 35.851' N	119° 11.250' W
H-12	37° 33.115' N	119° 07.018' W	H-34	37° 14.40' N	119° 30.740' W	Deep Dip	37° 31.57' N	119° 10.35' W
H-13	37° 31.657' N	119° 11.230' W	H-35	37° 40.40' N	119° 11.100' W	RAWS SNF06	37° 33.505' N	119° 14.430' W
H-14	37° 34.687' N	119° 12.970' W	H-36	37° 31.105' N	119° 13.938' W	Clover Meadow Camp	37° 31.682' N	119° 16.632' W
						Open Pit (Mine)	37° 34.7018' N	119° 13.814' W
						Strawberry Mine	37° 32.877' N	119° 17.48' W
						Slingsite-32	37° 33.505' N	119° 12.463' W
						Contingency Sling	37° 33.852' N	119° 14.453' W
						Niche Spike	37° 34.387' N	119° 16.005' W