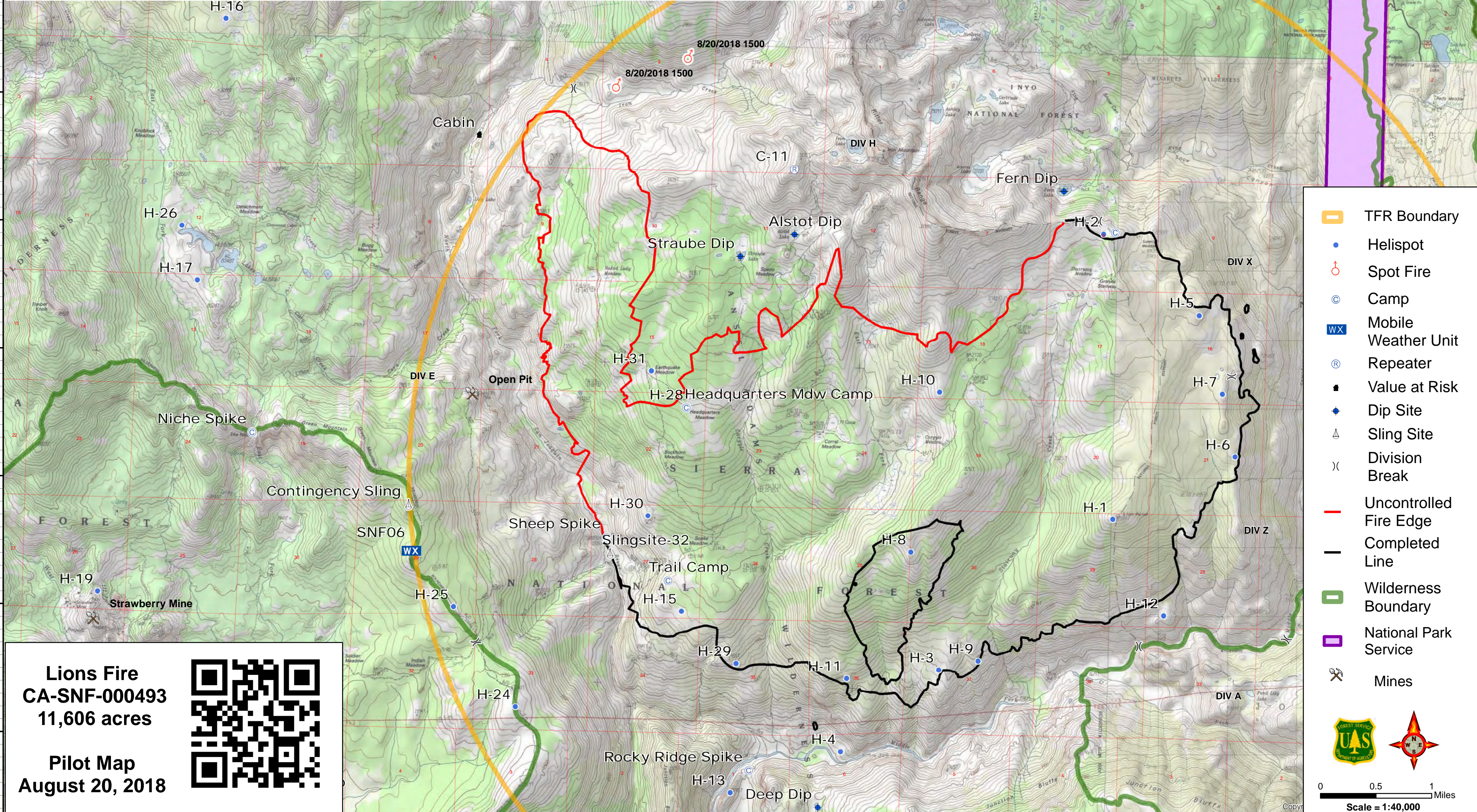


119°18'W 119°17'W 119°16'W 119°15'W 119°14'W 119°13'W 119°12'W 119°11'W 119°10'W 119°9'W 119°8'W 119°7'W 119°6'W 119°5'W

37°40'N
37°38'N
37°37'N
37°36'N
37°35'N
37°34'N
37°33'N
37°32'N

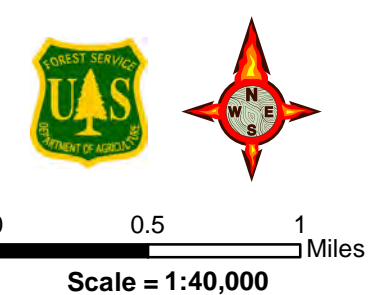
Feature	Latitude	Longitude	Elevation	Feature	Latitude	Longitude	Elevation	Feature	Latitude	Longitude	Elevation
H-1	37° 33.861' N	119° 7.539' W	8796	H-15	37° 33.066' N	119° 11.750' W	6745	Clover Helispot	37° 31.682' N	119° 16.632' W	7028
H-2	37° 36.089' N	119° 7.691' W	9245	H-16	37° 37.618' N	119° 16.3553' W	9200	Sheep Spike	37° 33.631' N	119° 12.500' W	5957
H-3	37° 32.653' N	119° 9.212' W	6558	H-17	37° 35.558' N	119° 16.566' W	8300	Mammoth Heliport	37° 38.863' N	118° 56.821' W	7723
H-4	37° 31.996' N	119° 10.156' W	5007	H-19	37° 33.116' N	119° 17.480' W	7507	Mammoth Spike	37° 38.855' N	118° 57.844' W	7818
H-5	37° 35.472' N	119° 06.735' W	8940	H-24	37° 32.306' N	119° 13.363' W	7677	Rocky Ridge Spike	37° 31.833' N	119° 11.054' W	4951
H-6	37° 34.37' N	119° 06.35' W	8389	H-25	37° 33.052' N	119° 13.980' W	7697	Headquarter Mdw Camp	37° 34.663' N	119° 11.733' W	8196
H-7	37° 34.86' N	119° 06.49' W	8606	H-26	37° 35.979' N	119° 16.738' W	8200	Trail Camp	37° 33.303' N	119° 11.888' W	6798
H-8	37° 33.544' N	119° 09.515' W	8353	H-28	37° 34.663' N	119° 11.733' W	8205	"Cabin"	37° 36.753' N	119° 13.859' W	6808
H-9	37° 32.744' N	119° 08.840' W	6480	H-29	37° 32.668' N	119° 11.203' W	6230	Alstot Dip	37° 36.031' N	119° 10.725' W	9219
H-10	37° 34.846' N	119° 09.272' W	8737	H-30	37° 33.807' N	119° 12.082' W	7070	Fern Dip	37° 36.417' N	119° 8.089' W	8780
H-11	37° 32.571' N	119° 10.111' W	6568	H-31	37° 34.94' N	119° 12.10' W	8202	Straube Dip	37° 35.851' N	119° 11.250' W	8891
H-12	37° 33.115' N	119° 07.018' W	6699	H-34	37° 14.40' N	119° 30.740' W	2640	Deep Dip	37° 31.57' N	119° 10.35' W	5545
H-13	37° 31.657' N	119° 11.230' W	5187	H-35	37° 40.40' N	119° 11.100' W	5200	RAWS SNF06	37° 33.505' N	119° 14.430' W	7956
H-14	37° 34.687' N	119° 12.970' W	7251	H-36	37° 31.105' N	119° 13.938' W	7878	Clover Meadow Camp	37° 31.682' N	119° 16.632' W	7028
								Open Pit (Mine)	37° 34.7018' N	119° 13.8139' W	6680
								Strawberry Mine	37° 32.877' N	119° 17.48' W	7500
								Slingsite-32	37° 33.505' N	119° 12.463' W	5957
								Contingency Sling	37° 33.852' N	119° 14.453' W	8250
								Niche Spike	37° 34.387' N	119° 16.005' W	8000



- TFR Boundary
- Helispot
- Spot Fire
- Camp
- Mobile Weather Unit
- Repeater
- Value at Risk
- Dip Site
- Sling Site
- Division Break
- Uncontrolled Fire Edge
- Completed Line
- Wilderness Boundary
- National Park Service
- Mines

Lions Fire
CA-SNF-000493
11,606 acres

Pilot Map
August 20, 2018



119°18'W 119°17'W 119°16'W 119°15'W 119°14'W 119°13'W 119°12'W 119°11'W 119°10'W 119°9'W 119°8'W 119°7'W 119°6'W 119°5'W 119°4'W