

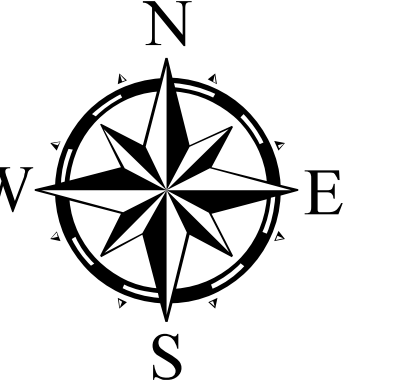
OPERATIONS MAP

Lions Fire
CASNF-000493
13,054 acres

August 31, 2018

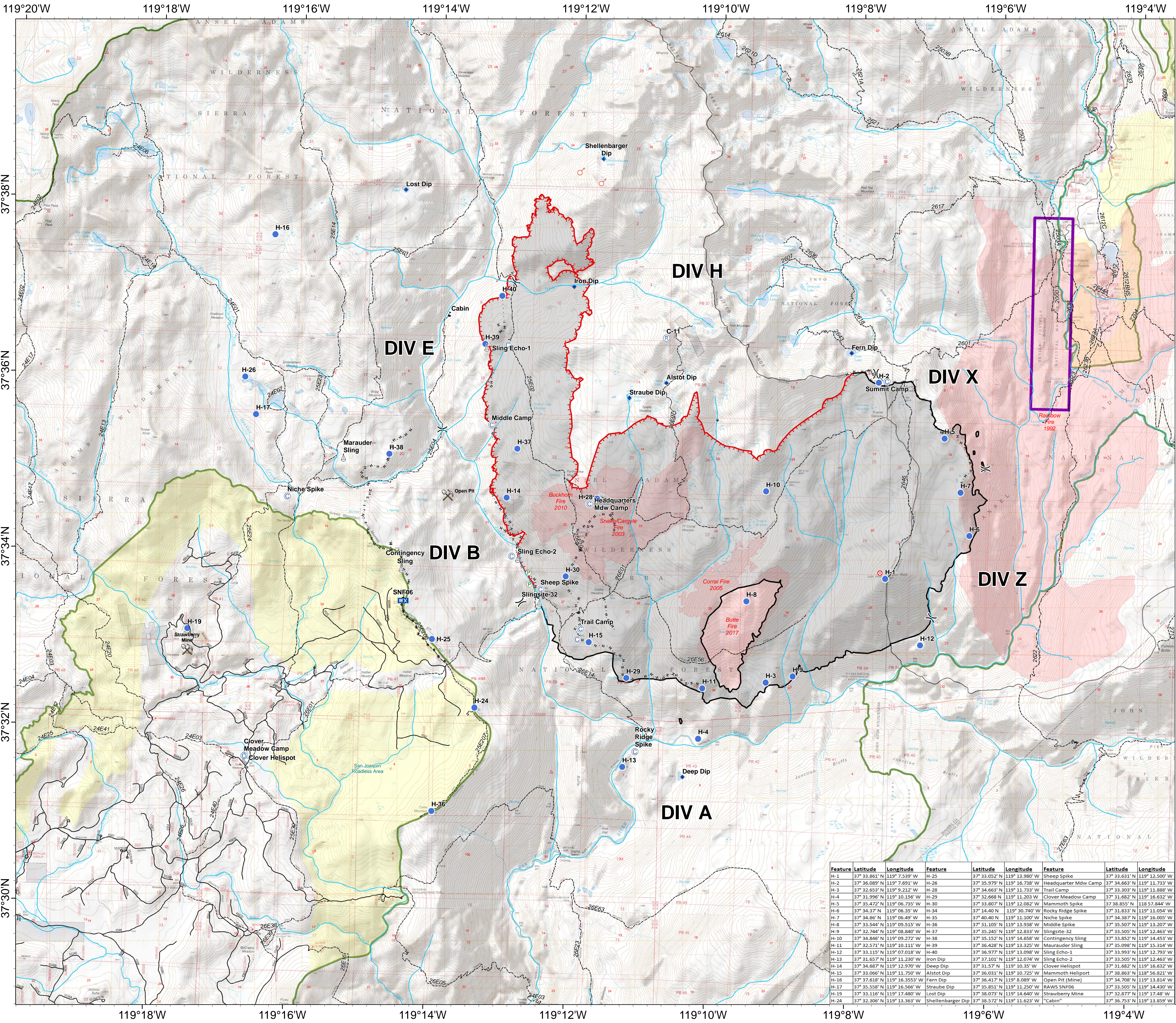
Produced
Aug 31 2018 1815
JDuke

- Camp
- Dip Site
- Fire Origin
- Helispot
- Mobile Weather Unit
- Pump
- Repeater
- Sling Site
- Spot Fire
- Value at Risk
- Division Break
- Mines
- Uncontrolled Fire Edge
- Completed Line
- Completed Hand Line
- Road as Completed Line
- Trails
- Lions Fire Perimeter
- Fire History
- Roadless
- Devil's Postpile National Monument
- Wilderness



0 0.5 1 Miles

Scale = 1:24,000



Feature	Latitude	Longitude	Feature	Latitude	Longitude	Feature	Latitude	Longitude
H-1	37° 33.861' N	119° 7.539' W	H-25	37° 33.052' N	119° 13.980' W	Sheep Spike	37° 33.631' N	119° 12.500' W
H-2	37° 36.089' N	119° 7.691' W	H-26	37° 35.979' N	119° 16.738' W	Headquarter Mdw Camp	37° 34.663' N	119° 11.733' W
H-3	37° 32.653' N	119° 9.212' W	H-28	37° 34.663' N	119° 11.733' W	Trail Camp	37° 33.303' N	119° 11.888' W
H-4	37° 31.996' N	119° 10.156' W	H-29	37° 32.668' N	119° 11.203' W	Clover Meadow Camp	37° 31.682' N	119° 16.632' W
H-5	37° 35.472' N	119° 06.735' W	H-30	37° 33.807' N	119° 12.082' W	Mammoth Spike	37° 38.855' N	118° 57.844' W
H-6	37° 34.37' N	119° 06.35' W	H-34	37° 14.40' N	119° 30.740' W	Rocky Ridge Spike	37° 31.833' N	119° 11.054' W
H-7	37° 34.86' N	119° 06.49' W	H-35	37° 40.40' N	119° 11.100' W	Niche Spike	37° 34.387' N	119° 16.005' W
H-8	37° 33.544' N	119° 09.515' W	H-36	37° 31.185' N	119° 13.938' W	Middle Spike	37° 35.507' N	119° 13.207' W
H-9	37° 32.744' N	119° 08.840' W	H-37	37° 35.245' N	119° 12.833' W	Slingite-32	37° 33.505' N	119° 12.463' W
H-10	37° 34.846' N	119° 09.272' W	H-38	37° 35.152' N	119° 14.658' W	Contingency Sling	37° 33.852' N	119° 14.453' W
H-11	37° 32.571' N	119° 10.111' W	H-39	37° 36.428' N	119° 13.325' W	Marauder Sling	37° 35.098' N	119° 15.314' W
H-12	37° 33.115' N	119° 07.018' W	H-40	37° 36.977' N	119° 13.098' W	Sling Echo-1	37° 33.993' N	119° 12.793' W
H-13	37° 31.657' N	119° 11.230' W	Iron Dip	37° 37.101' N	119° 12.074' W	Sling Echo-2	37° 33.505' N	119° 12.463' W
H-14	37° 34.687' N	119° 12.970' W	Deep Dip	37° 31.57' N	119° 10.35' W	Clover Helispot	37° 31.682' N	119° 16.632' W
H-15	37° 33.066' N	119° 11.750' W	Alstot Dip	37° 36.031' N	119° 10.725' W	Mammoth Heliport	37° 38.863' N	118° 56.821' W
H-16	37° 37.618' N	119° 16.353' W	Fern Dip	37° 36.417' N	119° 8.889' W	Open Pit (Mine)	37° 34.708' N	119° 13.814' W
H-17	37° 35.558' N	119° 16.566' W	Straube Dip	37° 35.851' N	119° 11.250' W	SAWS SNF06	37° 33.505' N	119° 14.430' W
H-19	37° 33.116' N	119° 17.480' W	Lost Dip	37° 38.073' N	119° 14.640' W	Strawberry Mine	37° 32.877' N	119° 17.48' W
H-24	37° 32.306' N	119° 13.363' W	Shellenbarger Dip	37° 38.572' N	119° 11.623' W	"Cabin"	37° 36.753' N	119° 13.859' W