

119°18'W 119°16'W 119°14'W 119°12'W 119°10'W 119°8'W 119°6'W

37°40'N
37°38'N
37°36'N
37°34'N
37°32'N

SUPPRESSION REPAIR MAP

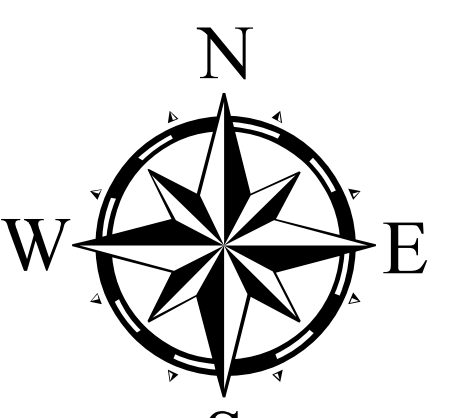
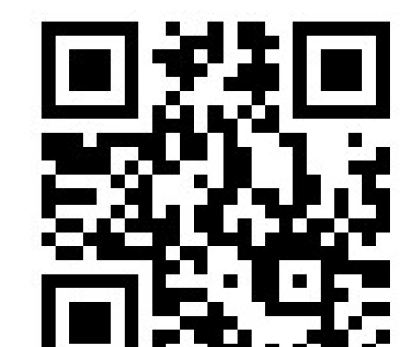
Lions Fire

CASNf-000493
13,463 acres
September 5, 2018
Produced
Sep 05 2018 1717
JDuke

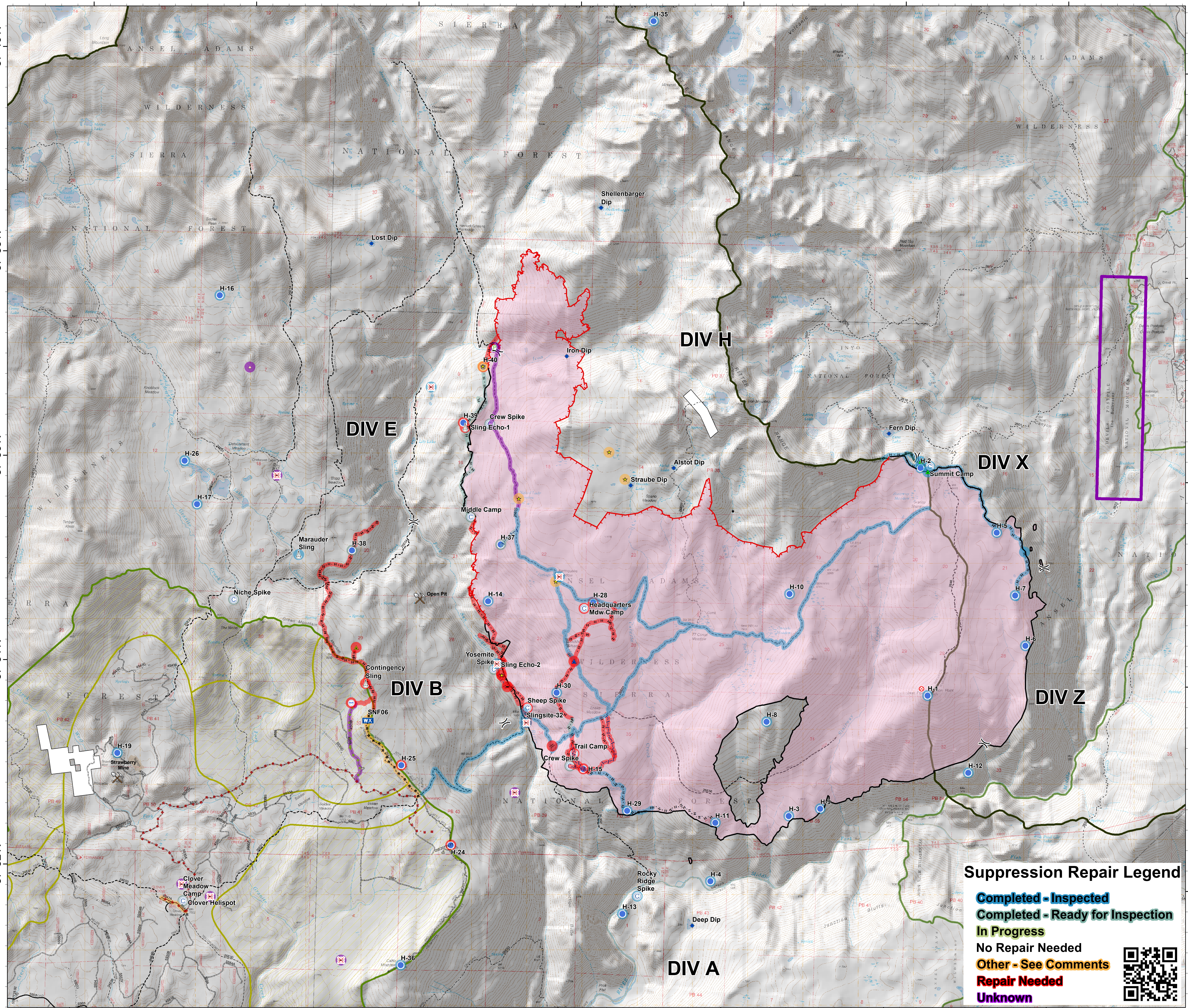
- Uncontrolled Fire Edge
- Completed Line
- Completed Hand Line
- Road as Completed Line
- Excessive Road Use
- Road in Inventoried Roadless Area
- User-Created Trail
- Camp
- Dip Site
- Fire Origin
- Helispot
- Mobile Weather Unit
- Pump
- Sling Site
- Division Break
- Adhoc Bridge
- Cut Switchback
- Cut Trees in Wilderness
- Disapproved Helispot
- Felled Tree in Meadow
- Felled Tree in Trail
- Parking Area
- Sensitive Site Impacted
- Trash
- Mines
- 4WD Trail
- Hiker Trail
- Pack and Saddle Trail
- 1: Closed Road
- 2: High Clearance Vehicles
- 3: Passenger Car Primitive
- Devil's Postpile National Monument
- Roadless
- Wilderness
- NF Boundary
- Private Land

Suppression Repair Legend

- Completed - Inspected
- Completed - Ready for Inspection
- In Progress
- No Repair Needed
- Other - See Comments
- Repair Needed
- Unknown



0 0.5 1 Miles
Scale = 1:21,000



119°18'W 119°16'W 119°14'W 119°12'W 119°10'W 119°8'W 119°6'W