

OPERATIONS MAP

Lions Fire

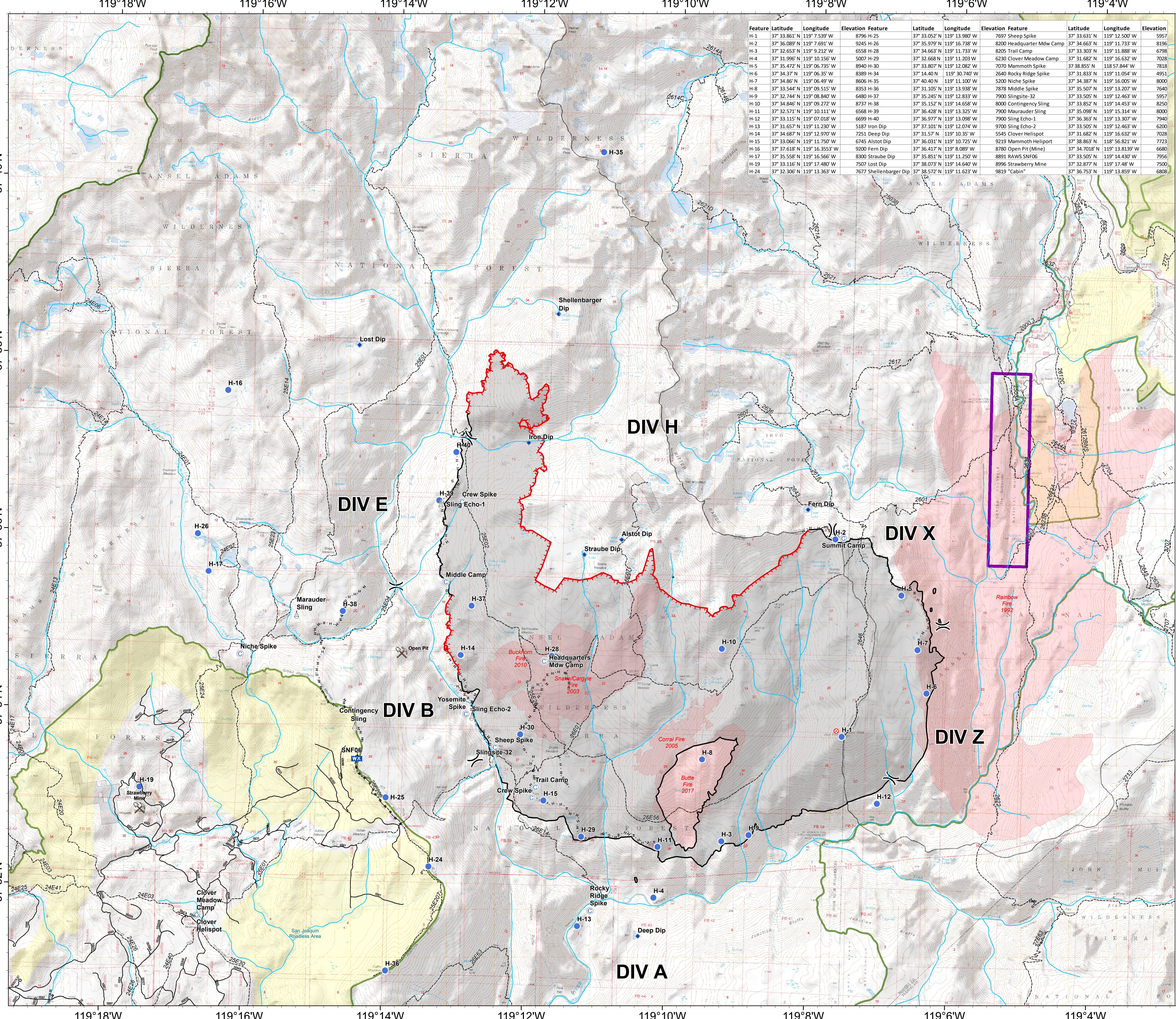

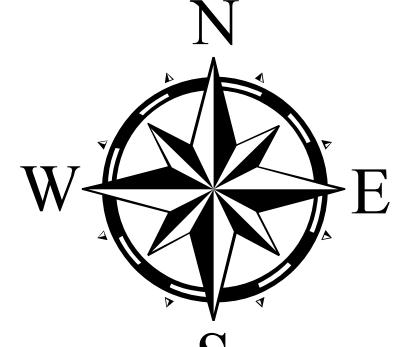
CA-SNF-000493
13,463 acres

September 9, 2018

Produced
Sep 08 2018 1353
JDuke

-  Camp
-  Dip Site
-  Fire Origin
-  Helispot
-  Mobile Weather Unit
-  Sling Site
-  Division Break
-  Mines
-  Uncontrolled Fire Edge
-  Completed Line
-  Completed Hand Line
-  Road as Completed Line
-  Trails
-  Lions Fire Perimeter
-  Fire History
-  Roadless Area
-  Devil's Postpile National Monument
-  Wilderness Area

Feature	Latitude	Longitude	Elevation	Feature	Latitude	Longitude	Elevation	Feature	Latitude	Longitude	Elevation
H-1	37° 33.861' N	119° 7.539' W	8796	H-25	37° 33.052' N	119° 13.980' W	7697	Sheep Spike	37° 33.631' N	119° 12.500' W	5957
H-2	37° 36.089' N	119° 7.691' W	9245	H-26	37° 35.979' N	119° 16.738' W	8200	Headquarter Mdw Camp	37° 34.663' N	119° 11.733' W	8196
H-3	37° 32.653' N	119° 9.212' W	6558	H-28	37° 34.663' N	119° 11.733' W	8200	Trail Camp	37° 33.303' N	119° 11.888' W	6798
H-4	37° 31.996' N	119° 10.156' W	5007	H-29	37° 32.668' N	119° 11.203' W	6230	Clover Meadow Camp	37° 31.682' N	119° 16.632' W	7028
H-5	37° 35.472' N	119° 06.735' W	8940	H-30	37° 33.807' N	119° 12.082' W	7070	Mammoth Spike	37° 38.855' N	118° 57.844' W	7818
H-6	37° 34.37' N	119° 06.35' W	8389	H-34	37° 14.40' N	119° 30.740' W	2640	Rocky Ridge Spike	37° 31.833' N	119° 11.054' W	4951
H-7	37° 34.86' N	119° 06.49' W	8606	H-35	37° 40.40' N	119° 11.100' W	5200	Niche Spike	37° 34.387' N	119° 16.005' W	7640
H-8	37° 33.544' N	119° 09.515' W	8533	H-36	37° 31.105' N	119° 13.938' W	7878	Middle Spike	37° 35.507' N	119° 13.207' W	8000
H-9	37° 32.744' N	119° 08.840' W	6480	H-37	37° 35.245' N	119° 12.833' W	7900	Slingsite-32	37° 33.505' N	119° 12.463' W	5957
H-10	37° 34.846' N	119° 09.272' W	8737	H-38	37° 35.152' N	119° 14.658' W	8000	Contingency Sling	37° 33.852' N	119° 14.453' W	8250
H-11	37° 32.571' N	119° 10.111' W	6568	H-39	37° 36.428' N	119° 13.325' W	7900	Marauder Sling	37° 35.098' N	119° 15.314' W	8000
H-12	37° 33.115' N	119° 07.018' W	6699	H-40	37° 36.977' N	119° 13.098' W	7900	Sling Echo-1	37° 36.363' N	119° 13.307' W	7940
H-13	37° 31.657' N	119° 11.239' W	5187	Iron Dip	37° 37.101' N	119° 12.074' W	9700	Sling Echo-2	37° 33.505' N	119° 12.463' W	6200
H-14	37° 34.087' N	119° 12.970' W	7251	Deep Dip	37° 31.57' N	119° 10.35' W	5545	Clover Helispot	37° 31.682' N	119° 16.632' W	7028
H-15	37° 33.065' N	119° 11.750' W	6745	Alstot Dip	37° 36.031' N	119° 10.725' W	9219	Mammoth Helispot	37° 38.863' N	118° 56.821' W	7723
H-16	37° 37.618' N	119° 16.353' W	9200	Fern Dip	37° 36.417' N	119° 8.089' W	8780	Open Pit (Mine)	37° 34.7018' N	119° 13.8139' W	6680
H-17	37° 35.558' N	119° 16.566' W	8300	Straube Dip	37° 35.851' N	119° 11.250' W	8891	RAWS SNF06	37° 33.505' N	119° 14.430' W	7956
H-19	37° 33.116' N	119° 17.480' W	7507	Lost Dip	37° 38.073' N	119° 14.640' W	8996	Strawberry Mine	37° 32.877' N	119° 17.48' W	7500
H-24	37° 32.306' N	119° 13.363' W	7677	Shellenbarger Dip	37° 38.572' N	119° 11.623' W	9819	"Cabin"	37° 36.753' N	119° 13.859' W	6808

0 0.5 1 Miles

Scale = 1:24,000