

**Legend**  
 — Ferguson FlightLine 20180726 @ 1040

- Hot Spot - Significant Priority (Considerable Threat to Fireline)
- Hot Spot - Moderate Priority (Possible Threat to Fireline)
- 🔥 Live Fire - Uncontained Spot Fire or Fire Front

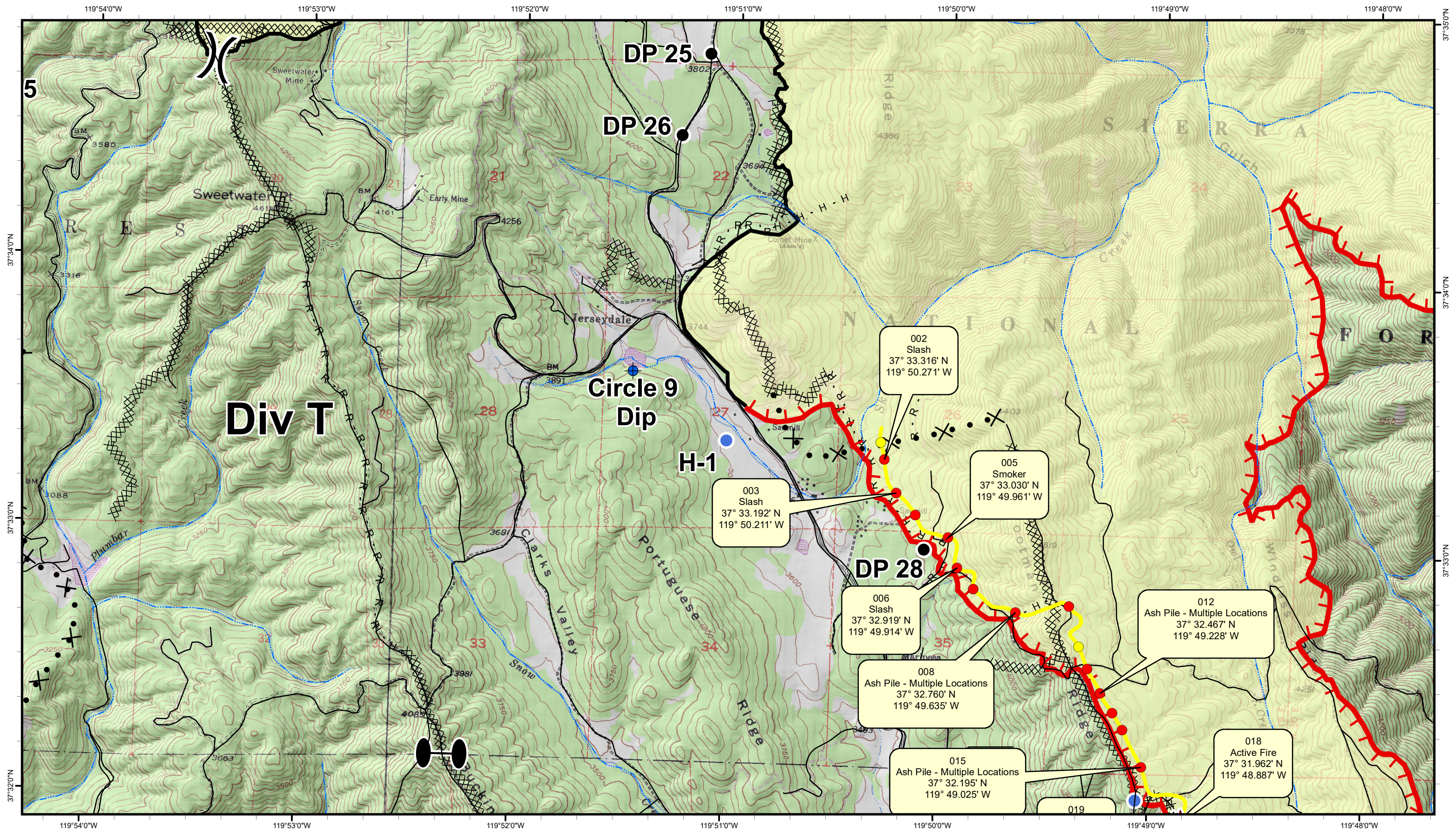
Datum WGS 84

# Ferguson Fire

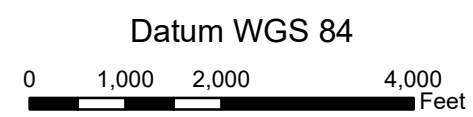
## CA-SNF-745

**Infrared Index**  
 Infrared Data Captured on 20180726 @1040





- Hot Spot - Significant Priority (Considerable Threat to Fireline)
- Hot Spot - Moderate Priority (Possible Threat to Fireline)
- Live Fire - Uncontained Spot Fire or Fire Front

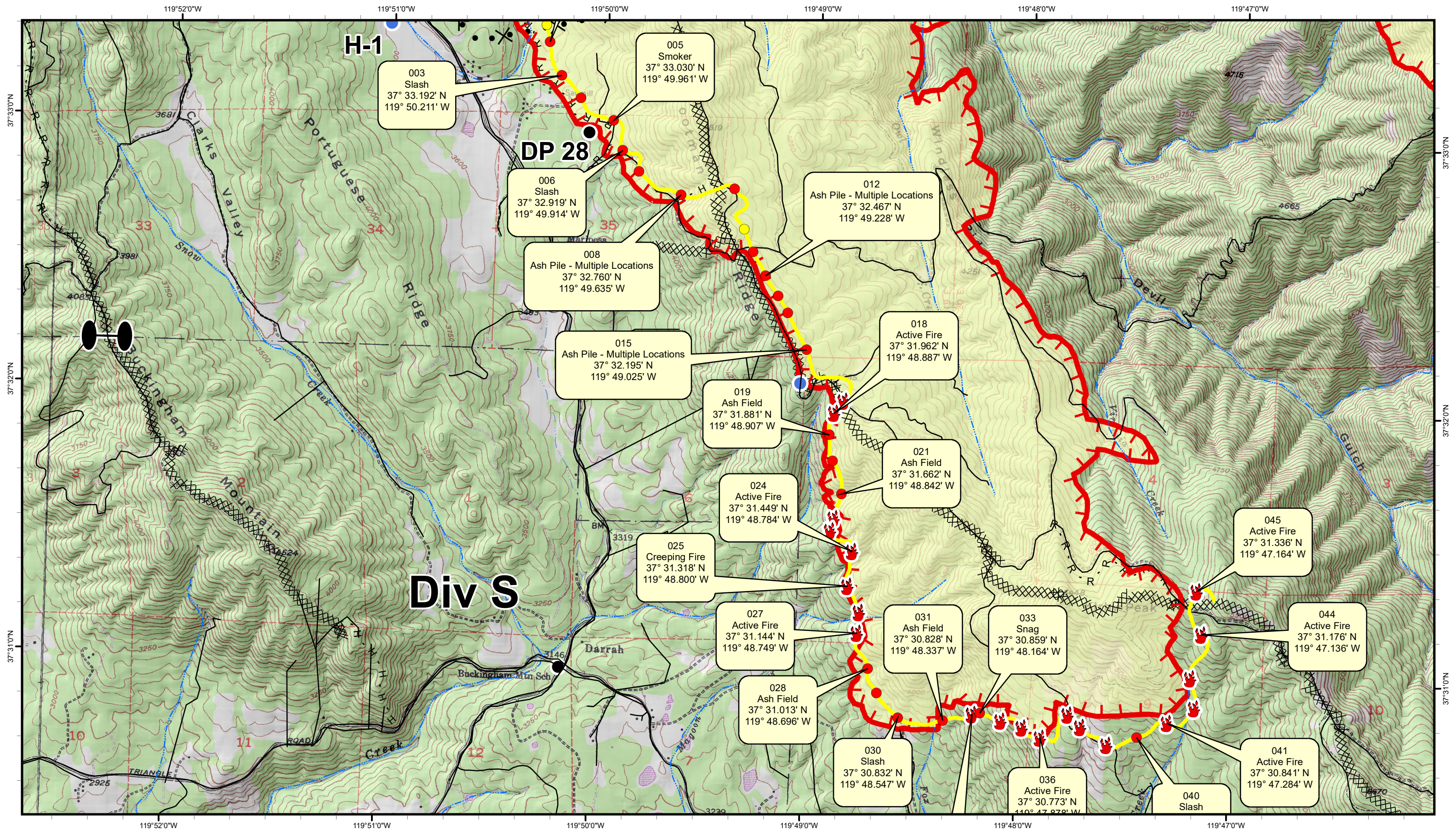


# Ferguson Fire

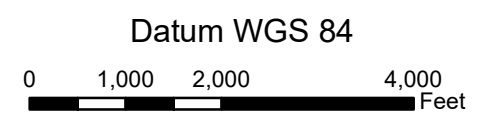
## CA-SNF-745

**Infrared Div T**  
 Infrared Data Captured on 20180726 @1040





- Hot Spot - Significant Priority (Considerable Threat to Fireline)
- Hot Spot - Moderate Priority (Possible Threat to Fireline)
- 🔥 Live Fire - Uncontained Spot Fire or Fire Front

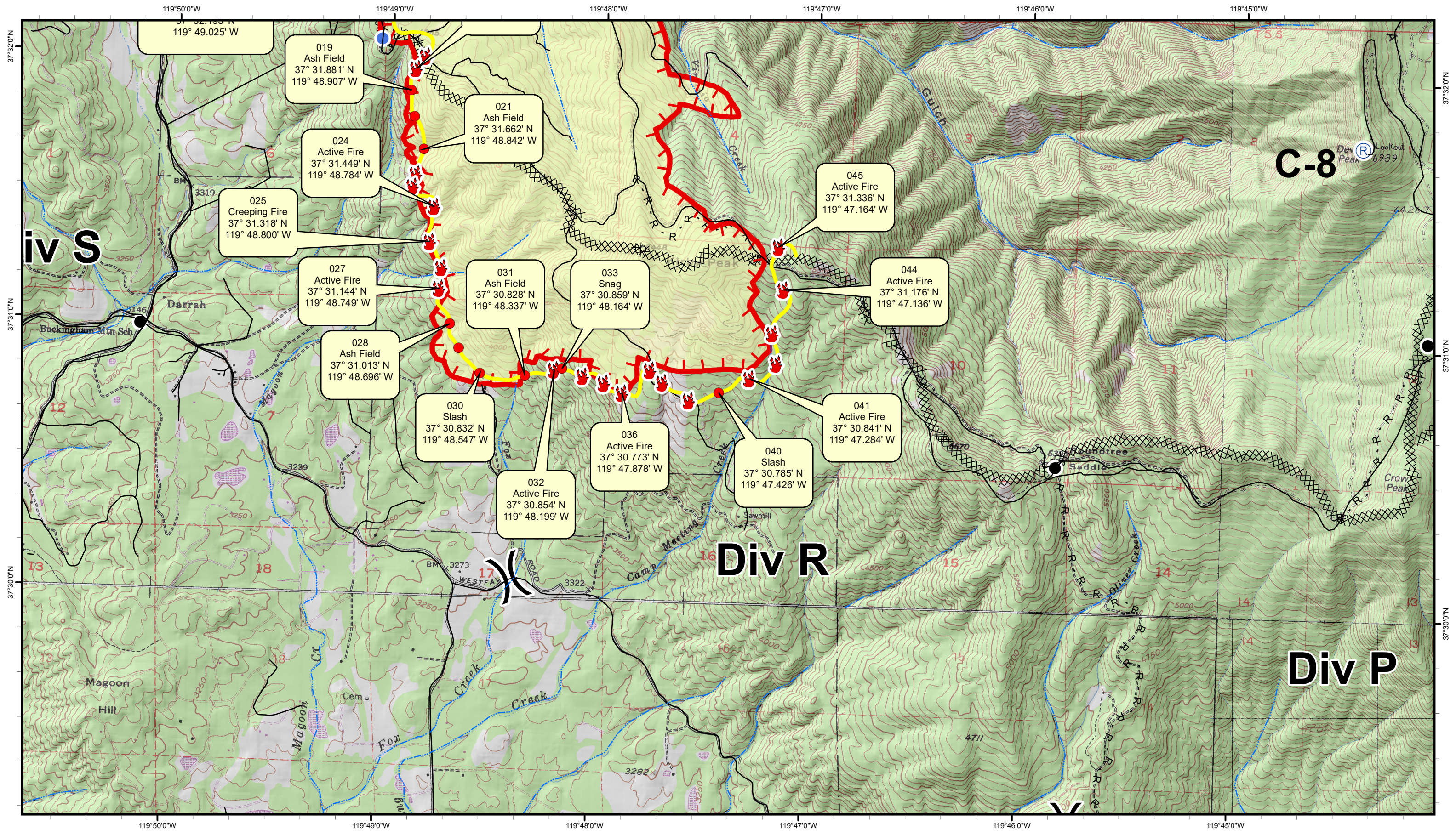


# Ferguson Fire

## CA-SNF-745

**Infrared Div S**  
Infrared Data Captured on 20180726 @1040





019  
Ash Field  
37° 31.881' N  
119° 48.907' W

021  
Ash Field  
37° 31.662' N  
119° 48.842' W

024  
Active Fire  
37° 31.449' N  
119° 48.784' W

025  
Creeping Fire  
37° 31.318' N  
119° 48.800' W

045  
Active Fire  
37° 31.336' N  
119° 47.164' W

027  
Active Fire  
37° 31.144' N  
119° 48.749' W

031  
Ash Field  
37° 30.828' N  
119° 48.337' W

033  
Snag  
37° 30.859' N  
119° 48.164' W

044  
Active Fire  
37° 31.176' N  
119° 47.136' W

028  
Ash Field  
37° 31.013' N  
119° 48.696' W

030  
Slash  
37° 30.832' N  
119° 48.547' W

036  
Active Fire  
37° 30.773' N  
119° 47.878' W

041  
Active Fire  
37° 30.841' N  
119° 47.284' W

032  
Active Fire  
37° 30.854' N  
119° 48.199' W

040  
Slash  
37° 30.785' N  
119° 47.426' W

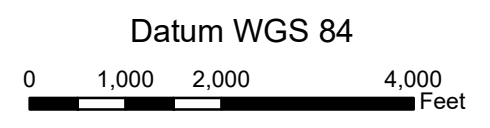
C-8

Div R

Div P



- Hot Spot - Significant Priority (Considerable Threat to Fireline)
- Hot Spot - Moderate Priority (Possible Threat to Fireline)
- 🔥 Live Fire - Uncontained Spot Fire or Fire Front



# Ferguson Fire




## CA-SNF-745

**Infrared Div R**  
Infrared Data Captured on 20180726 @1040





## INFRARED MAP LEGEND

-  Hot Spot - Moderate Priority (Possible Threat to Fireline)
-  Hot Spot - Significant Priority (Considerable Threat to Fireline)
-  Live Fire - Uncontained Spot Fire or Fire Front

GPS Coordinates are in Degrees & Decimal Minutes (DD° MM.mmmm')

Datum is WGS 84 (unless otherwise noted on map)

Ex. 34° 04.405  
 -118° 14.414

Date and Time is when the intelligence was gathered

Heat Sources are normally acquired within a 400 foot strip, 200 feet inside and 200 feet outside the fire line or fire front (wider strips are flown as necessary and are labeled on infrared map).

## LIMITS TO INFRARED AND GPS INFORMATION

Under the best conditions heat sources less than 4 to 6 inches in diameter are inconsistent.

Very Small Heat sources under heavy canopy or in large rock piles are difficult to verify.

Accuracy of GPS coordinates is within 50 feet, 90% of the time.

### Labeling Details:

