

- Hot Spot - Significant Priority (Considerable Threat to Fireline)
- Hot Spot - Moderate Priority (Possible Threat to Fireline)
- 🔥 Live Fire - Uncontained Spot Fire or Fire Front

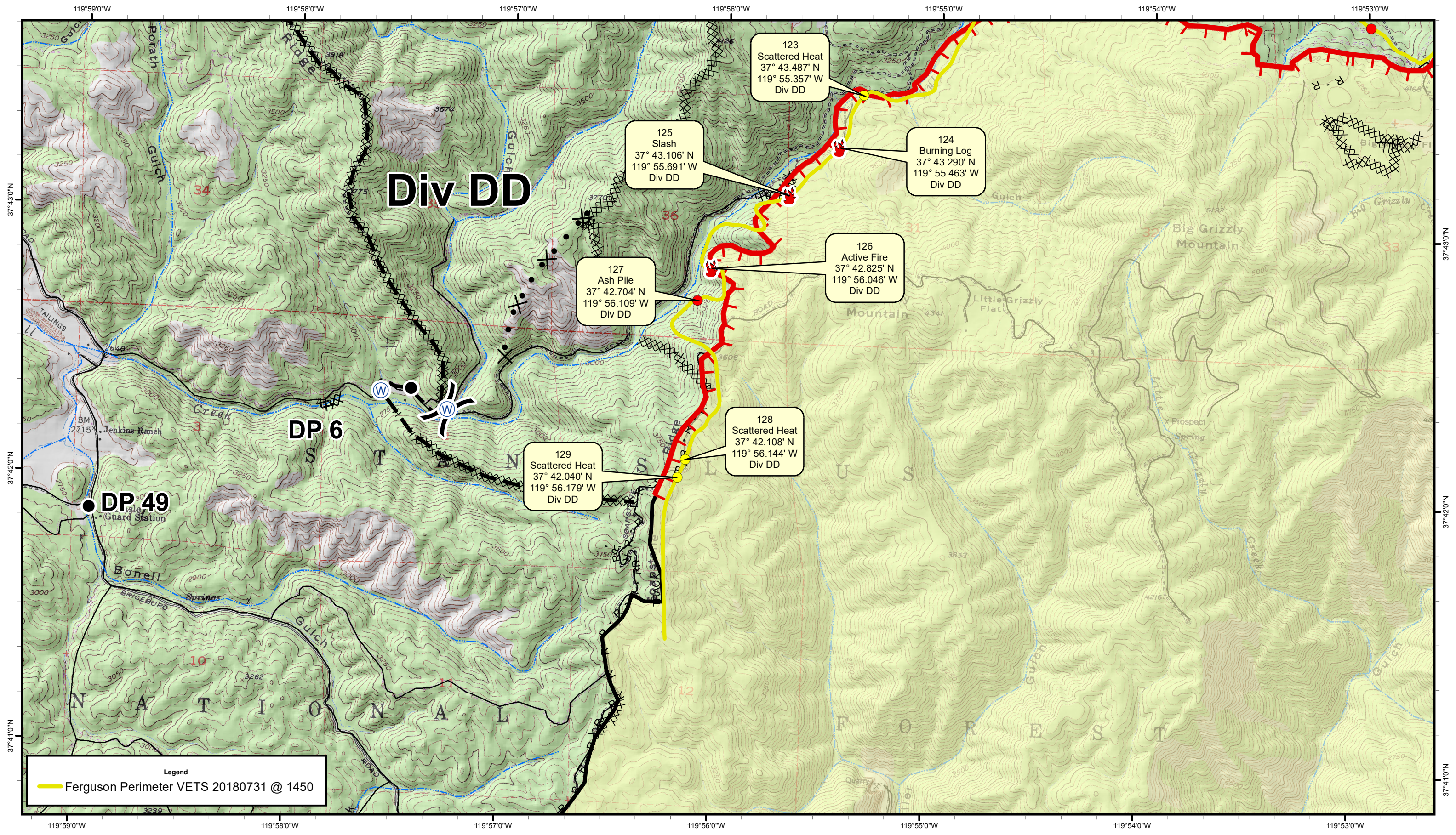
Datum WGS 84
 0 1 2 4 Miles

Ferguson Fire

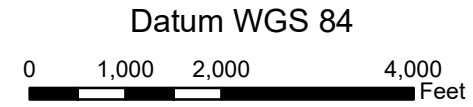
CA-SNF-745

Infrared Index
 Infrared Data Captured on 20180731 @ 1450





- Hot Spot - Significant Priority (Considerable Threat to Fireline)
- Hot Spot - Moderate Priority (Possible Threat to Fireline)
- Live Fire - Uncontained Spot Fire or Fire Front

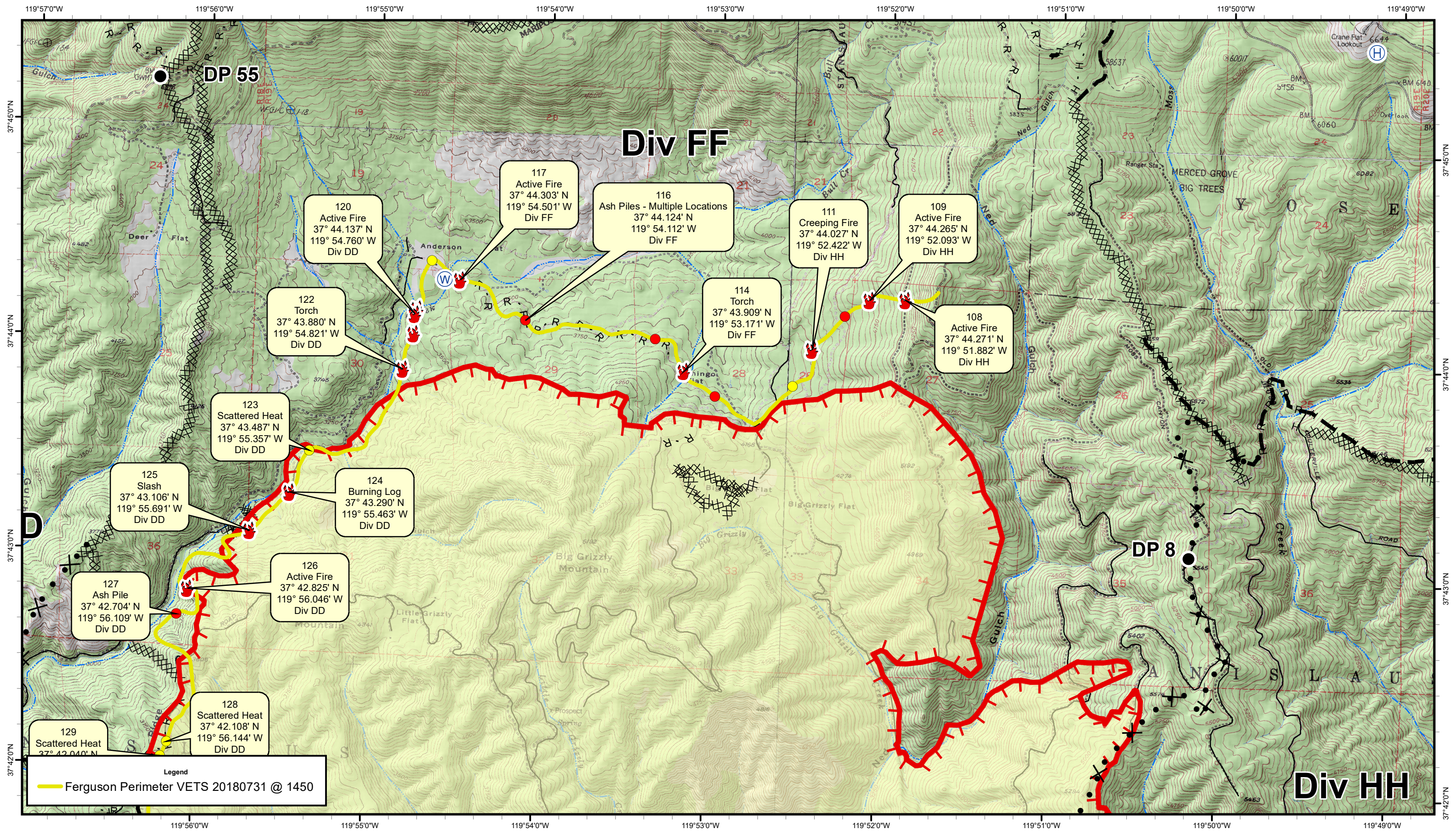


Ferguson Fire

CA-SNF-745

Infrared Detail Div DD
Infrared Data Captured on 20180731 @ 1450





Div FF

Div HH

Legend
 Ferguson Perimeter VETS 20180731 @ 1450

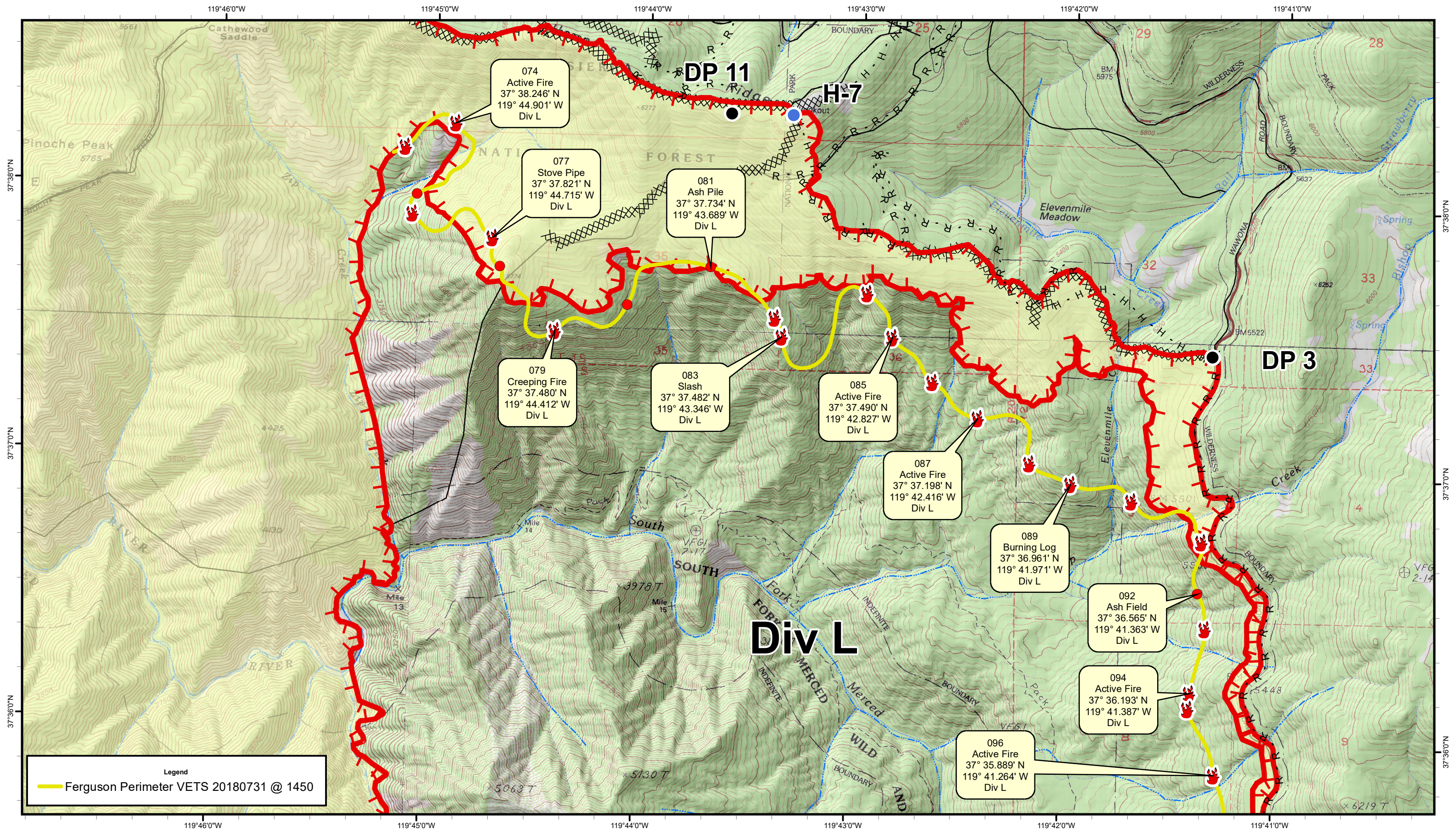
- Hot Spot - Significant Priority (Considerable Threat to Fireline)
- Hot Spot - Moderate Priority (Possible Threat to Fireline)
- 🔥 Live Fire - Uncontained Spot Fire or Fire Front

Datum WGS 84
 0 1,000 2,000 4,000 Feet

Ferguson Fire
CA-SNF-745

Infrared Detail Div FF
 Infrared Data Captured on 20180731 @ 1450





074
Active Fire
37° 38.246' N
119° 44.901' W
Div L

077
Stove Pipe
37° 37.821' N
119° 44.715' W
Div L

081
Ash Pile
37° 37.734' N
119° 43.689' W
Div L

079
Creeping Fire
37° 37.480' N
119° 44.412' W
Div L

083
Slash
37° 37.482' N
119° 43.346' W
Div L

085
Active Fire
37° 37.490' N
119° 42.827' W
Div L

087
Active Fire
37° 37.198' N
119° 42.416' W
Div L

089
Burning Log
37° 36.961' N
119° 41.971' W
Div L

092
Ash Field
37° 36.565' N
119° 41.363' W
Div L

094
Active Fire
37° 36.193' N
119° 41.387' W
Div L

096
Active Fire
37° 35.889' N
119° 41.264' W
Div L

Legend
 Ferguson Perimeter VETS 20180731 @ 1450

- Hot Spot - Significant Priority (Considerable Threat to Fireline)
- Hot Spot - Moderate Priority (Possible Threat to Fireline)
- Live Fire - Uncontained Spot Fire or Fire Front

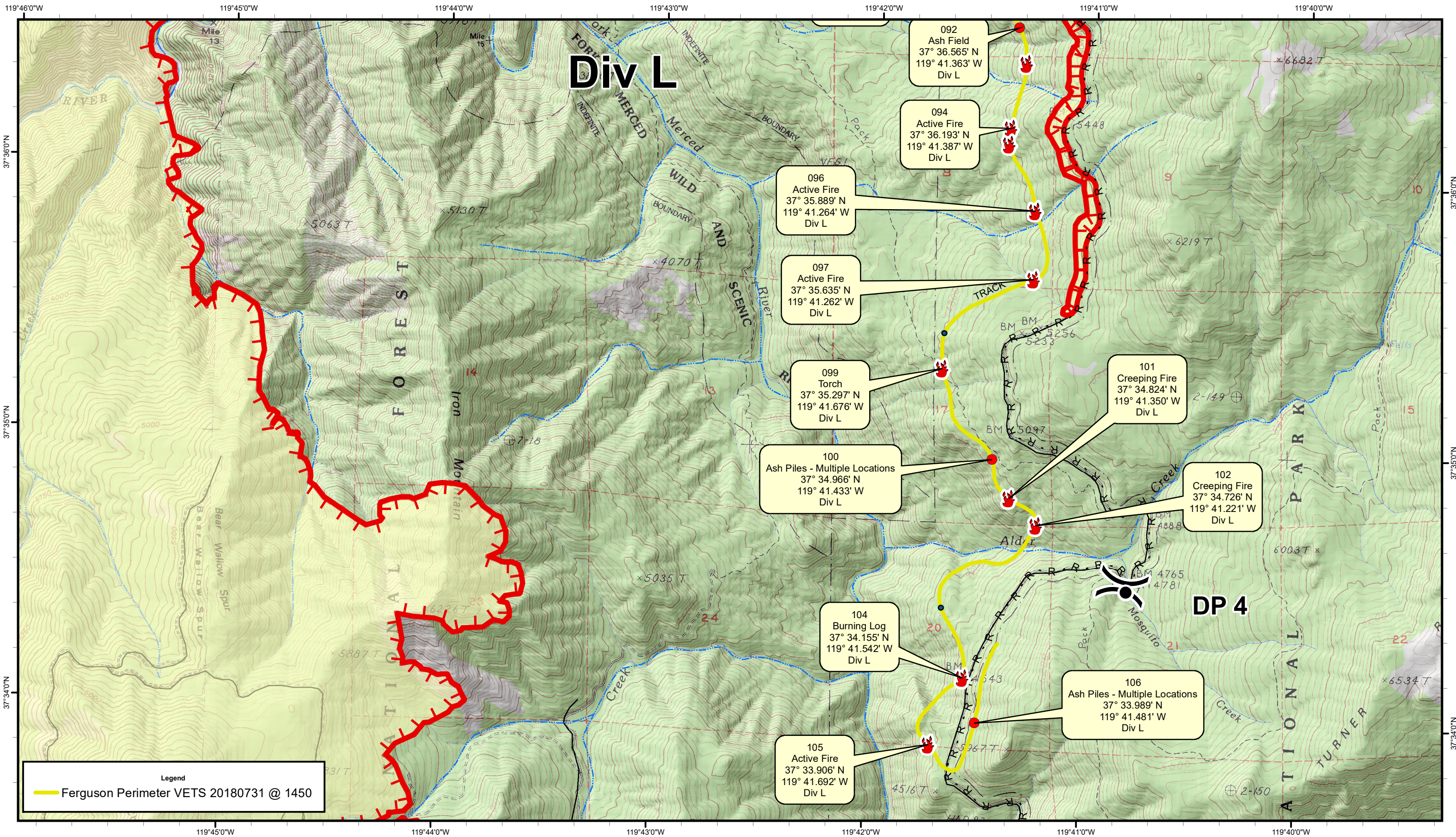
Datum WGS 84
 0 1,000 2,000 4,000 Feet

Ferguson Fire

CA-SNF-745

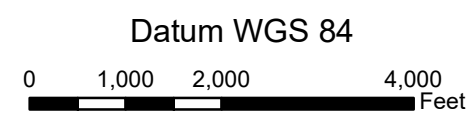
Infrared Detail Div L - North
 Infrared Data Captured on 20180731 @ 1450





Legend
 Ferguson Perimeter VETS 20180731 @ 1450

- Hot Spot - Significant Priority (Considerable Threat to Fireline)
- Hot Spot - Moderate Priority (Possible Threat to Fireline)
- Live Fire - Uncontained Spot Fire or Fire Front

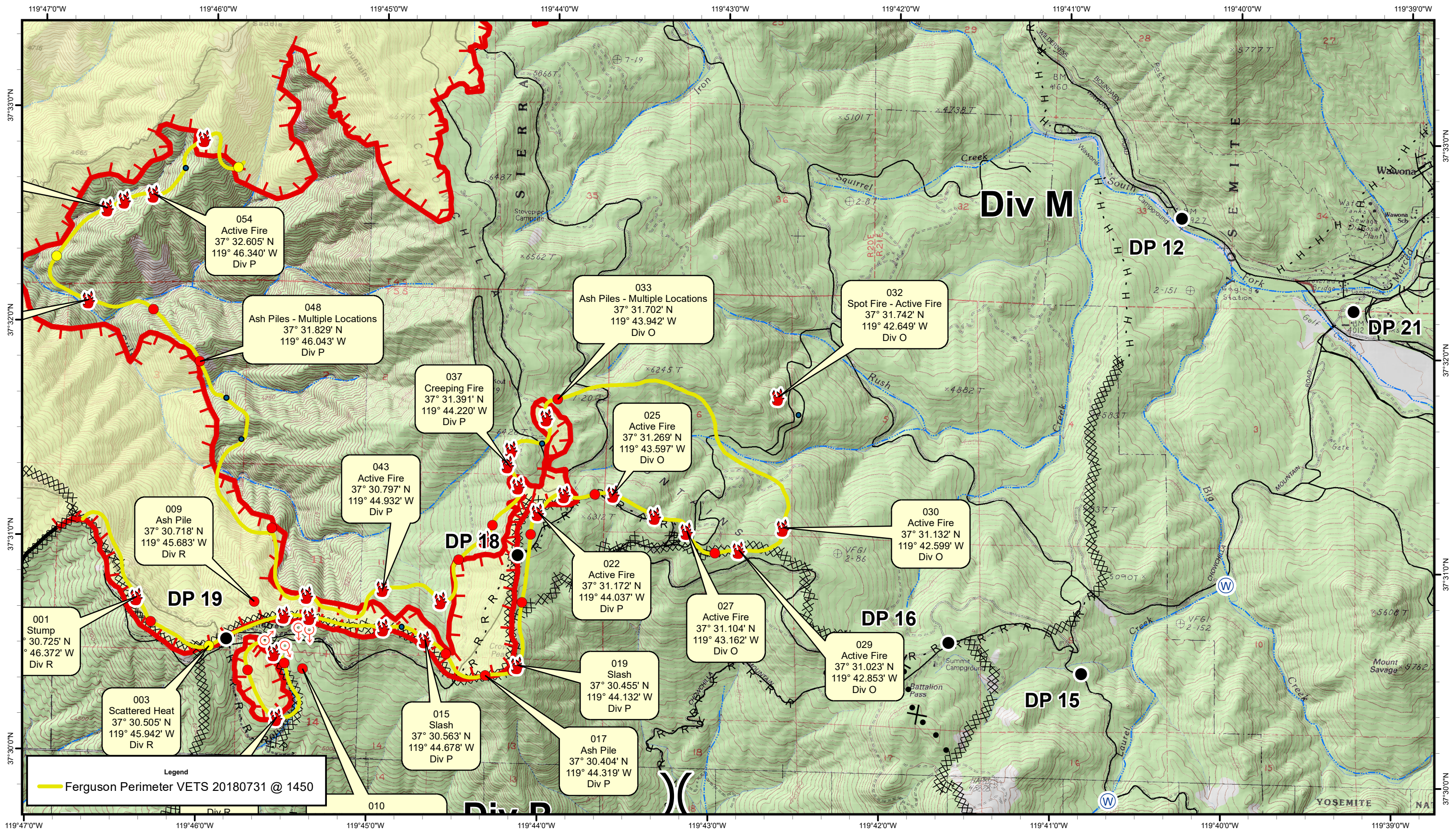


Ferguson Fire

CA-SNF-745

Infrared Detail Div L - South
 Infrared Data Captured on 20180731 @ 1450





Legend
 Ferguson Perimeter VETS 20180731 @ 1450

- Hot Spot - Significant Priority (Considerable Threat to Fireline)
- Hot Spot - Moderate Priority (Possible Threat to Fireline)
- 🔥 Live Fire - Uncontained Spot Fire or Fire Front

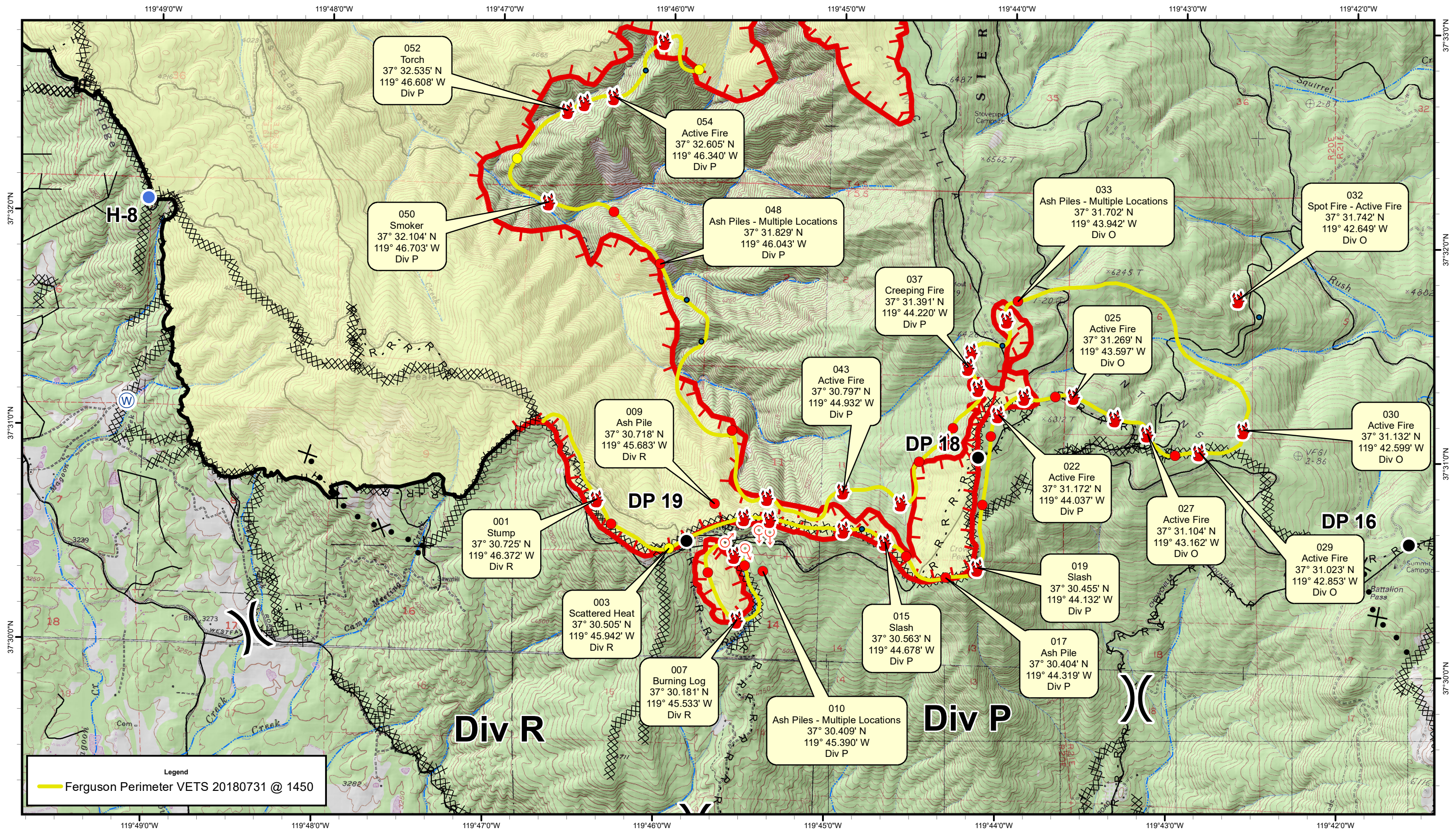
Datum WGS 84
 0 1,000 2,000 4,000 Feet

Ferguson Fire

CA-SNF-745

Infrared Detail Div O
 Infrared Data Captured on 20180731 @ 1450





Legend
 Ferguson Perimeter VETS 20180731 @ 1450

- Hot Spot - Significant Priority (Considerable Threat to Fireline)
- Hot Spot - Moderate Priority (Possible Threat to Fireline)
- Live Fire - Uncontained Spot Fire or Fire Front

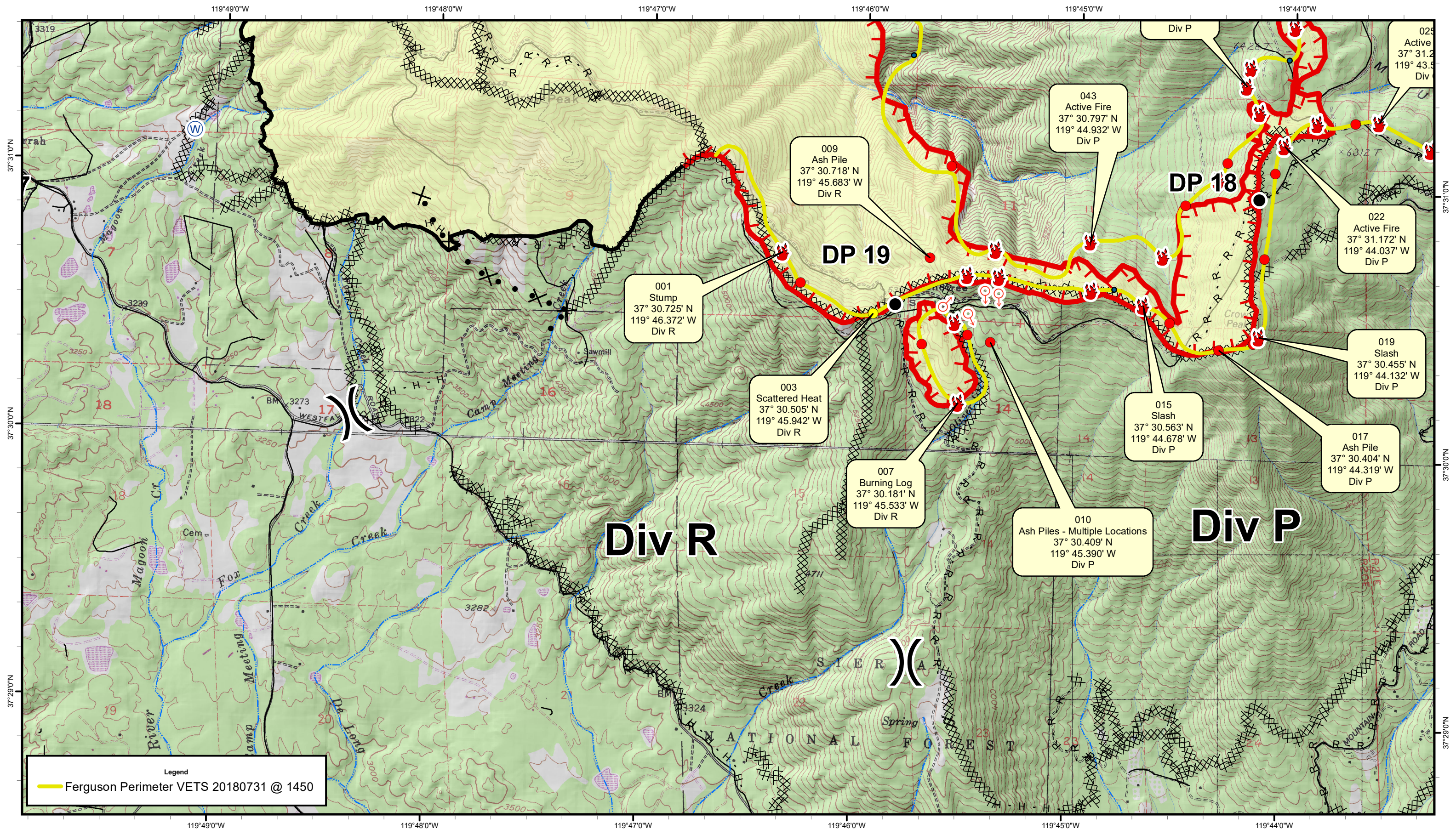
Datum WGS 84
 0 1,000 2,000 4,000 Feet

Ferguson Fire

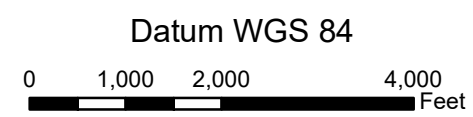
CA-SNF-745

Infrared Detail Div P
 Infrared Data Captured on 20180731 @ 1450





- Hot Spot - Significant Priority (Considerable Threat to Fireline)
- Hot Spot - Moderate Priority (Possible Threat to Fireline)
- 🔥 Live Fire - Uncontained Spot Fire or Fire Front



Ferguson Fire




CA-SNF-745

Infrared Detail Div R
 Infrared Data Captured on 20180731 @ 1450





INFRARED MAP LEGEND

-  Hot Spot - Moderate Priority (Possible Threat to Fireline)
-  Hot Spot - Significant Priority (Considerable Threat to Fireline)
-  Live Fire - Uncontained Spot Fire or Fire Front

GPS Coordinates are in Degrees & Decimal Minutes (DD° MM.mmmm')

Datum is WGS 84 (unless otherwise noted on map)

Ex. 34° 04.405
 -118° 14.414

Date and Time is when the intelligence was gathered

Heat Sources are normally acquired within a 400 foot strip, 200 feet inside and 200 feet outside the fire line or fire front (wider strips are flown as necessary and are labeled on infrared map).

LIMITS TO INFRARED AND GPS INFORMATION

Under the best conditions heat sources less than 4 to 6 inches in diameter are inconsistent.

Very Small Heat sources under heavy canopy or in large rock piles are difficult to verify.

Accuracy of GPS coordinates is within 50 feet, 90% of the time.

Labeling Details:

